

City of Glendale, CA

Community Profile

On February 16, 1906, the City of Glendale was incorporated and spans approximately 30.6 square miles. The City of Glendale is the third largest city in Los Angeles County and is home to more than 191,719 people (US Census). The City enjoys a mild climate with an average high temperature of 77 degrees. The average rainfall in the City is 17.82 inches per year.

The City is minutes away from downtown Los Angeles, Pasadena, Burbank, Hollywood, and Universal City. Glendale is surrounded by Southern California's leading commercial districts, providing

many opportunities with the largest client and vendor base in the world. With service from four major free-ways, Glendale connects directly to the Southern California marketplace.

Businesses and residents alike have taken advantage of Glendale's central location, reputation for safety, excellent business environment, outstanding schools, healthcare facilities, and growing restaurant and entertainment options. Glendale is one of Southern California's leading office markets featuring a wide range of properties, floor plans, and amenities. The City has over six million square feet of office space and is home to such recognized firms like Walt Disney Imagineering, Nestle USA, IHOP/Applebees, Dream Works, and Public Storage.

Glendale provides well-maintained streets and a variety of transportation services. The City's historic success at attracting employers is partially attributed to the result of its location at the center of three major freeways. The Golden State Freeway (I-5), Glendale Freeway (SR-2), and Ventura Freeway (SR-134) as well as the 210 Foothill Freeway, all provide easy access for residents, workers, and customers from around the region.

Glendale offers its own bus services, the Beeline, with 13 routes connecting customers to Jet Propulsion Laboratory (JPL) and the City of Burbank. The Beeline has service routes connecting to the Metrolink Stations in Burbank and Glendale. The Bob Hope Airport in Burbank serves the Los Angeles area including Glendale, Pasadena, and the San Fernando Valley. It is the only airport in the greater Los Angeles area with a direct rail connection to downtown Los Angeles. The City of Glendale is located about 30 minutes from Los Angeles International Airport (LAX) which is a commerce leader and designated as a world-class airport for its convenient location, modern facilities, and superior sea/air/land connections.

Glendale prides itself on the quality of services it provides to the community. It is a full-service City, which includes a water and electrical department. The City operates its own power plant capable of serving the electrical needs of the entire City, although the majority of power is currently imported from other areas for cost savings. Water comes primarily from the Metropolitan Water District, along with a small portion from local wells.

City of Glendale, CA

Form of Government

Glendale is a full-service Charter City governed by a Council-Manager form of government. Five Councilmembers are elected at-large and serve 4-year staggered terms. Elections take place every other year during odd numbered years on the first Tuesday in April. The Mayor's position is filled by one of the Councilmembers, who vote each year to decide who will hold this honor. Other elected officials include the City Clerk and City Treasurer. The City Manager and City Attorney are appointed by the City Council.

A variety of Boards, Commissions, and Committees assist the City Council in serving the Glendale community. These bodies identify specific needs and problems within their purview. Each body meets on a regular basis and each meeting is open to the public. The length of member terms and the interval of appointments vary.

The City Manager, who is appointed by the City Council, acts as the chief executive officer responsible for the daily operations of the City. The City Manager appoints all non-elected department executives. Department executives are responsible for the daily operations within their individual departments and after appropriate recruitment processes selects various management and support staff members. The mission and description of each department and their sections are discussed within the Department Budget section of this document.

Executive Team

JAMES E. STARBIRD, **City Manager**

YASMIN K. BEERS, **Assistant City Manager**

RONALD T. BORUCKI
City Treasurer

ROBERT P. ELLIOT
Director of Administrative
Services - Finance

SCOTT HOWARD
City Attorney

CINDY CLEARY
Director of Libraries

MICHELE FLYNN
City Auditor

ARDASHES KASSAKHIAN
City Clerk

RONALD DE POMPA
Police Chief

EDWARD FRAGA
Director of
Information Services

HAROLD SCOGGINS
Fire Chief

MATTHEW DOYLE
Director of Human Resources

HASSAN HAGHANI
Director of
Community Development

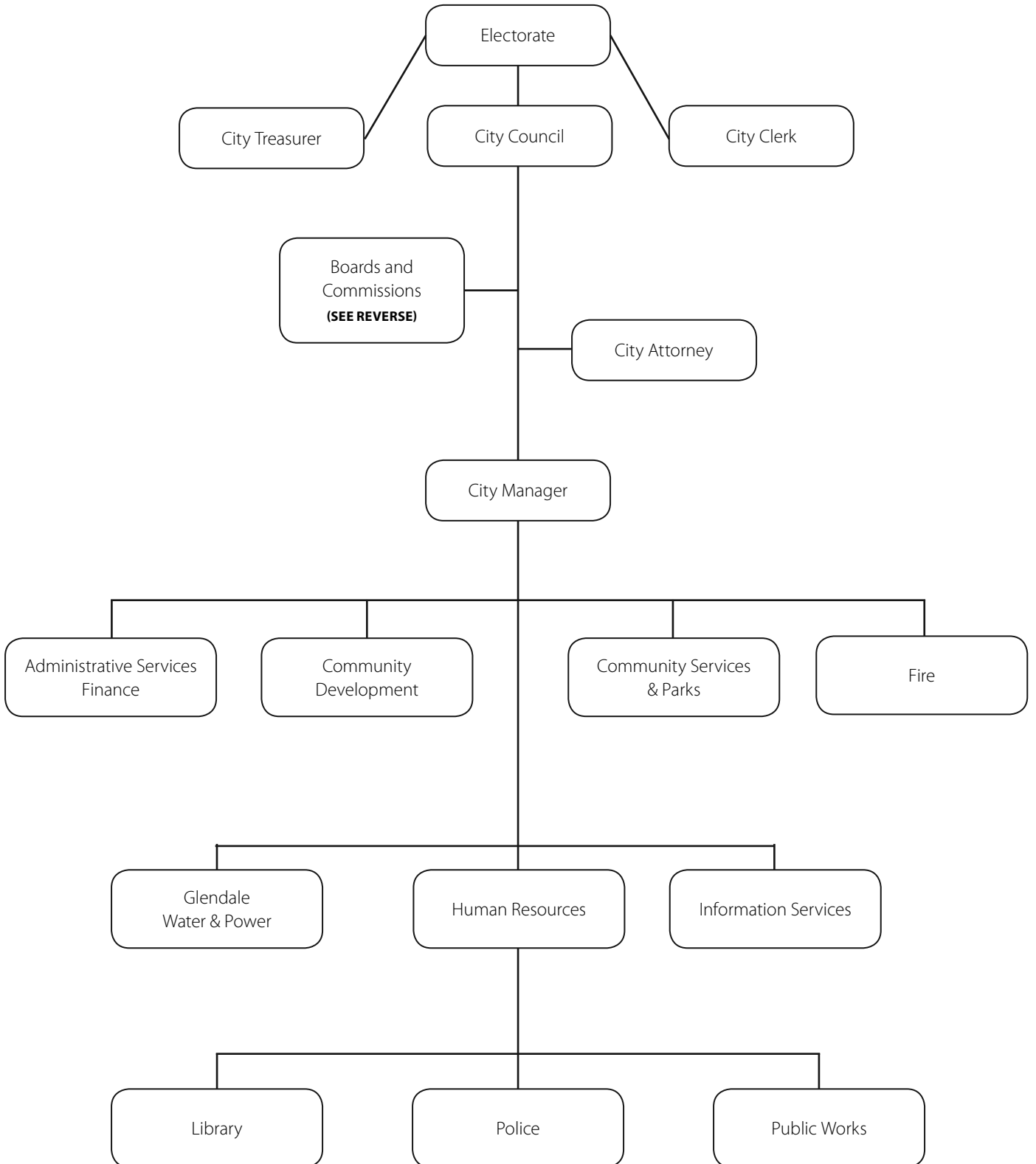
GLENN O. STEIGER
General Manager of
Glendale *Water & Power*

JESS DURAN
Director of Community
Services & Parks

STEPHEN ZURN
Director of Public Works

City of Glendale, CA

Organization Chart



City of Glendale, CA
Boards and Commissions

Arts & Culture Commission

Community Services & Parks

Audit Committee

Management Services

Building & Fire Board of Appeals

Community Development

Bob Hope Airport Authority

Management Services

Civil Service Commission

Human Resources

CDBG Advisory Committee

Community Services & Parks

Design Review Boards 1 & 2

Community Development

Glendale Housing Authority

Community Development

Glendale *Water & Power* Commission

Glendale Water & Power

Historic Preservation Commission

Community Development

Parks, Recreation & Community Services Commission

Community Services & Parks

Planning Commission

Community Development

Commission on the Status of Women

Management Services

Transportation & Parking Commission

Public Works

City of Glendale, CA
Distinguished Budget Presentation Award



The Government Finance Officers Association of the United States and Canada (GFOA) presented a Distinguished Budget Presentation Award to the City of Glendale for its annual budget for the fiscal year beginning July 1, 2010. In order to receive this award for effective budget presentation, a government entity must publish a budget document that meets program criteria as a policy document, a financial plan, an operations guide, and a communications device. The City of Glendale began to participate in this program in Fiscal Year 2009-10. This was the second year that the City of Glendale has received this prestigious award.

The Distinguished Budget Presentation Award is valid for a period of one year only. The City of Glendale continues to conform to the GFOA program requirements for the Fiscal Year 2011-12 annual budget. This document will be submitted to be considered for another award this year.

City of Glendale, CA
Excellence in Operating Budget Award



The California Society of Municipal Finance Officers (CSMFO) presented a Certificate of Award for Excellence in Operating Budget to the City of Glendale for Fiscal Year 2010-11. In order to receive this award, a government entity must publish a budget document that meets the Meritorious and Excellence criteria established by CSMFO. The City of Glendale began to participate in this program in Fiscal Year 2010-11. This was the first year that the City of Glendale has received this award.

The Excellence in Operating Budget Award is valid for a period of one year only. The City of Glendale continues to conform to the CSMFO program requirements for the Fiscal Year 2011-12 annual budget. This document will be submitted to be considered for another award this year.