

CITY OF GLENDALE, CA
2010 – 2011

Adopted
Budget



About the Cover

Brand Library and Art Center

The Brand Library and Art Center nestles against the Verdugo Mountains at the intersection of Mountain and Grandview Avenues. Originally named El Miradero, it was completed in 1904 by Leslie Brand, one of the “founding fathers” of the City. Termed “Brand’s Castle” by locals, it was designed by his brother in law, Nathaniel Dryden. The structure’s Moorish theme was suggested by Brand himself, after a visit to the East Indian Pavilion during the 1893 Chicago World’s Fair. During his lifetime, Brand hosted many celebrities and dignitaries at his home, culminating in a famous “fly in” luncheon during which guests arrived by plane on his private airstrip. At his death in 1925, the mansion was deeded to the City of Glendale. Today it houses a library, art gallery and performing arts studio.

Downtown Glendale

Drawing locals and visitors alike, Downtown Glendale is a popular Southern California destination. Anchored by the world famous Alex Theatre, Glendale Galleria and Americana at Brand, Downtown Glendale is known for its fabulous dining, terrific shopping and friendly atmosphere. Nestled between the 134 and 5 freeways at the east end of the San Fernando Valley, Glendale is the third largest City in Los Angeles County with a population of 207,000, but still maintains its small town charm and hospitality.

Glendale Transportation Center

The City dedicated its “new” Transportation Center in 1924 at the site of the former Tropic Southern Pacific Depot. Located at 400 Cerritos Avenue, this Spanish Mission style structure with its dramatic arched entrance was designed by noted architects MacDonald and Couchot. At the height of the rail transportation era, eight passenger trains stopped here daily and for many of those passengers, the building became their first glimpse of the City of Glendale. In 1997, the station was placed on the Registrar of Historic Places and underwent an extensive renovation shortly after. Today, the Glendale Transportation Center provides service to travelers from the Amtrak train and Greyhound bus lines, as well as hundreds of Metrolink passengers each week.

The Americana at Brand

One of the finest retail, restaurant and residential developments in Southern California, The Americana at Brand now offers upscale living in downtown Glendale. Working with the City’s Community Redevelopment and Housing Department, Caruso Affiliated Properties has produced a unique lifestyle environment. The property offers both condominium and apartment units whose residents have access to valet parking, a concierge, a theater, and a variety of exceptional eating establishments and shops, all on site.

City of Glendale, California



CITY COUNCIL

Ara Najarian, Mayor

Councilmembers:

Laura Friedman, Frank Quintero, Dave Weaver, John Drayman

BUDGET TEAM

Robert P. Elliot, Director of Administrative Services - Finance

Michele Flynn, City Auditor

Jason Bradford, Budget Administrator

Vanik Darabedian, Administrative Analyst

Adrine Isayan, Administrative Analyst

Michelle Nguyen, Administrative Analyst

Information Services, PeopleSoft Team

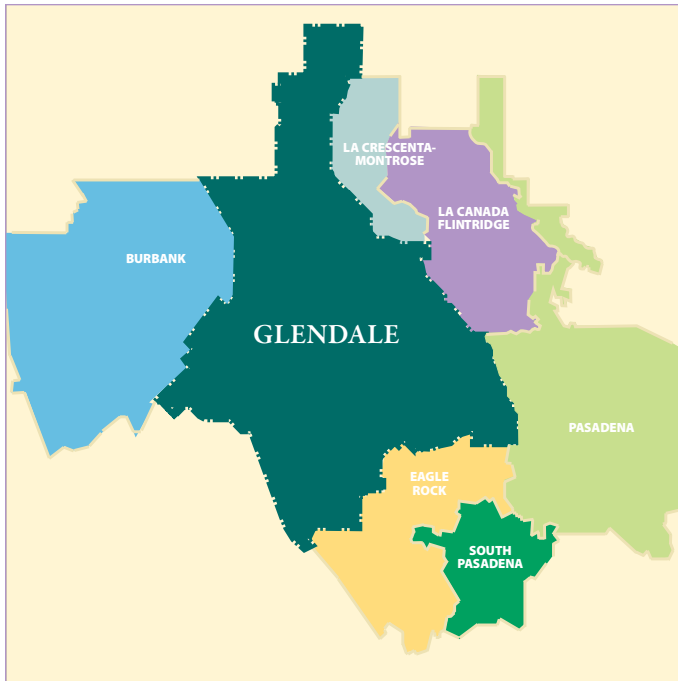
Graphics Section, Design and Printing

2010 – 2011

Adopted Budget

City of Glendale, CA

Community Profile



On February 16, 1906, the City of Glendale was incorporated and spans approximately 30.6 square miles. The City of Glendale is the third largest city in Los Angeles County and is home to more than 207,000 people. The City enjoys a mild climate with an average high temperature of 77 degrees. The average rainfall in the City is 17.82 inches per year.

The City is minutes away from downtown Los Angeles, Pasadena, Burbank, Hollywood, and Universal City. Glendale is surrounded by Southern California's leading commercial districts, providing many opportunities with the largest client and

vendor base in the world. With service from four major freeways, Glendale connects directly to the Southern California marketplace.

Businesses and residents alike have taken advantage of Glendale's central location, reputation for safety, excellent business environment, outstanding schools, healthcare facilities, and growing restaurant and entertainment options. Glendale is one of Southern California's leading office markets featuring a wide range of properties, floor plans, and amenities. The City has over six million square feet of office space and is home to such recognized firms like Walt Disney Imagineering, Nestle USA, IHOP/Applebees, Dream Works, and Public Storage.

Glendale provides well-maintained streets and a variety of transportation services. The City's historic success at attracting employers is partially attributed to the result of its location at the center of three major freeways. The Golden State Freeway (I-5), Glendale Freeway (SR-2), and Ventura Freeway (SR-134) as well as the 210 Foothill Freeway, all provide easy access for residents, workers, and customers from around the region.

Glendale offers its own bus services, the Beeline, with 13 routes connecting customers to Jet Propulsion Laboratory (JPL) and the City of Burbank. The Beeline has service routes connecting to the Metrolink Stations in Burbank and Glendale. The Bob Hope Airport in Burbank serves the Los Angeles area including Glendale, Pasadena, and the San Fernando Valley. It is the only airport in the greater Los Angeles area with a direct rail connection to downtown Los Angeles. The City of Glendale is located about 30 minutes from Los Angeles International Airport (LAX) which is a commerce leader and designated as a world-class airport for its convenient location, modern facilities, and superior sea/air/land connections.

Glendale prides itself on the quality of services it provides to the community. It is a full-service City, which includes a water and electrical department. The City operates its own power plant capable of serving the electrical needs of the entire City, although the majority of power is currently imported from other areas for cost savings. Water comes primarily from the Metropolitan Water District, along with a small portion from local wells.

City of Glendale, CA
Form of Government

Glendale is a full-service Charter City governed by a Council-Manager form of government. Five Councilmembers are elected at-large and serve 4-year staggered terms. Elections take place every other year during odd numbered years on the first Tuesday in April. The Mayor's position is filled by one of the Councilmembers, who vote each year to decide who will hold this honor. Other elected officials include the City Clerk and City Treasurer. The City Manager and City Attorney are appointed by the City Council.

A variety of Boards, Commissions, and Committees assist the City Council in serving the Glendale community. These bodies identify specific needs and problems within their purview. Each body meets on a regular basis and each meeting is open to the public. The length of member terms and the interval of appointments vary.

The City Manager, who is appointed by the City Council, acts as the chief executive officer responsible for the daily operations of the City. The City Manager appoints all non-elected department executives. Department executives are responsible for the daily operations within their individual departments and after appropriate recruitment processes selects various management and support staff members. The mission and description of each department and their sections are discussed within the Department Budget section of this document.

Executive Team

JAMES E. STARBIRD, City Manager
YASMIN BEERS, Assistant City Manager

RONALD T. BORUCKI
City Treasurer

ROBERT P. ELLIOT
Director of Administrative
Services - Finance

ARDASHES KASSAKHIAN
City Clerk

GEORGE CHAPJIAN
Director of Community
Services & Parks

MICHELE FLYNN
City Auditor

PHILIP LANZAFAME
Director of Community
Redevelopment & Housing

CINDY CLEARY
Director of Libraries

EDWARD FRAGA
Director of
Information Services

HAROLD SCOGGINS
Fire Chief

RONALD DE POMPA
Police Chief

HASSAN HAGHANI
Director of
Community Planning

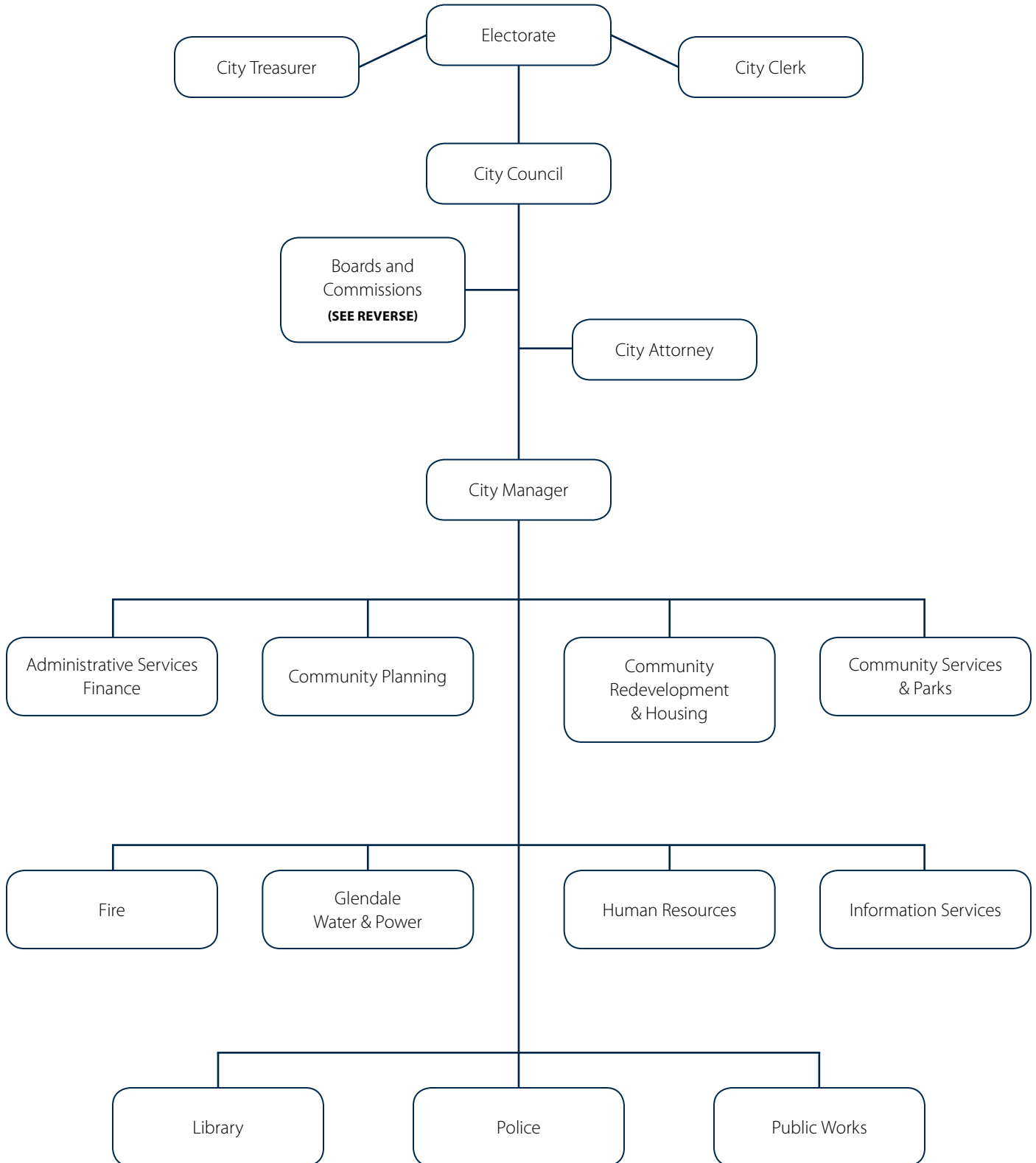
GLENN O. STEIGER
General Manager of
Glendale Water & Power

MATT DOYLE
Director of
Human Resources

SCOTT HOWARD
City Attorney

STEPHEN ZURN
Director of Public Works

City of Glendale, CA
Organization Chart



City of Glendale, CA
Boards and Commissions

Arts & Culture Commission

Community Services & Parks

Audit Committee

Finance

Building & Fire Board of Appeals

Community Planning

Bob Hope Airport Authority

Management Services

Civil Service Commission

Human Resources

CDBG Advisory Committee

Community Services & Parks

Design Review Boards 1 & 2

Community Planning

Glendale Housing Authority

Community Redevelopment & Housing

Glendale Water & Power Commission

Glendale Water & Power

Historic Preservation Commission

Community Planning

Parks, Recreation & Community Services Commission

Community Services & Parks

Planning Commission

Community Planning

Commission on the Status of Women

Management Services

Transportation & Parking Commission

Public Works

City of Glendale, CA
Distinguished Budget Presentation Award



The Government Finance Officers Association of the United States and Canada (GFOA) presented a Distinguished Budget Presentation Award to the City of Glendale for its annual budget for the fiscal year beginning July 1, 2009. In order to receive this award for effective budget presentation, a government entity must publish a budget document that meets program criteria as a policy document, a financial plan, an operations guide, and a communications device. This was the first time that the City of Glendale has received this prestigious award.

The Distinguished Budget Presentation Award is valid for a period of one year only. The City of Glendale continues to conform to the GFOA program requirements for the Fiscal Year 2010-11 annual budget. This document will be submitted to be considered for another award this year.