

# Hexavalent Chromium Removal by Reduction with Ferrous Sulfate, Coagulation, and Filtration: A Pilot-Scale Study

*Gang Qin<sup>1\*</sup>, Michael J. McGuire<sup>1</sup>, Nicole K. Blute<sup>1</sup>, Chad Seidel<sup>1</sup>, Leighton Fong<sup>2</sup>*

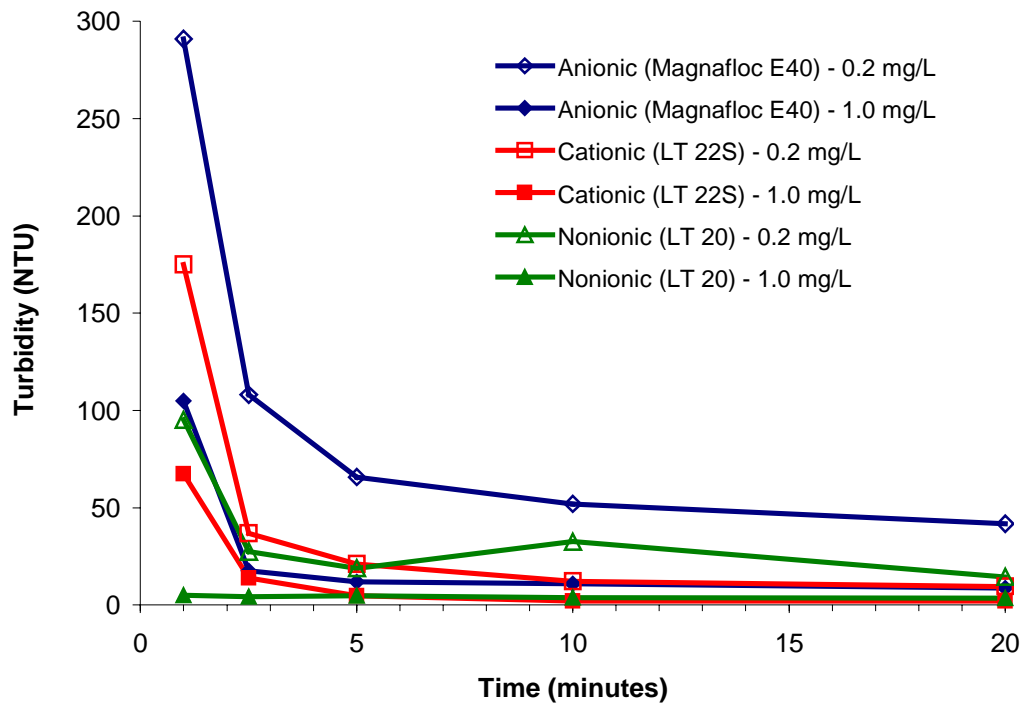
<sup>1</sup>Malcolm Pirnie, Inc., Santa Monica, CA.

<sup>2</sup>Glendale Water and Power, Glendale, CA.

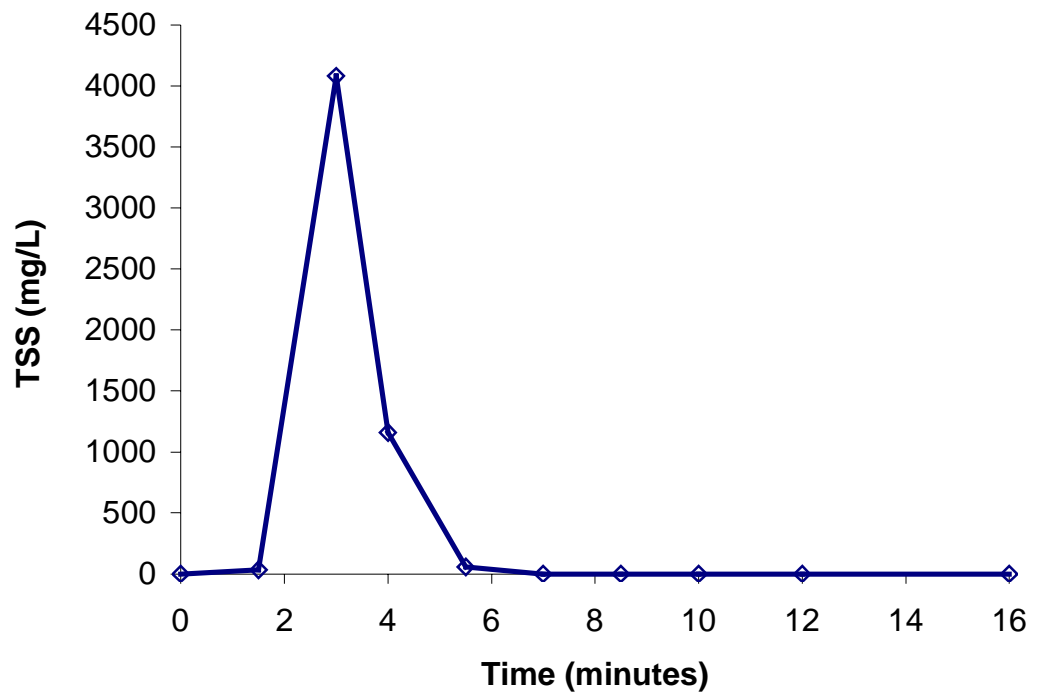
Number of pages: 3 (including cover page)

Number of figures: 2

\* Corresponding author phone: (310) 829-1441; fax: (310) 829-2155; email: dqin@pirnie.com



**Figure S1.** Effectiveness of 3 different coagulant aids, each applied in two dosages, on backwash solid settling for the RCF system. These results can also be expressed in terms of their corresponding overflow rate: 2.5 minutes corresponds to a 1 gpm/sf overflow rate and 20 minutes corresponds to a 0.125 gpm/sf overflow rate.



**Figure S2.** Total suspended solids analysis of the backwash water settling.