

TABLE OF ORGANIZATIONAL STRUCTURE

CITY COUNCIL

** Meets every Tuesday evening at City Hall **

| | | |
|--------------------|-----------------|--------|
| Bob Yousefian | - Mayor | Apr-05 |
| Gus Gomez | - Councilmember | Apr-07 |
| Rafi Manoukian | - Councilmember | Apr-07 |
| Frank Quintero III | - Councilmember | Apr-05 |
| Dave Weaver | - Councilmember | Apr-05 |

OTHER ELECTED OFFICIALS

| | | |
|-------------|------------------|--------|
| Ron Borouki | - City Treasurer | Apr-05 |
| Doris Twedt | - City Clerk | Apr-05 |

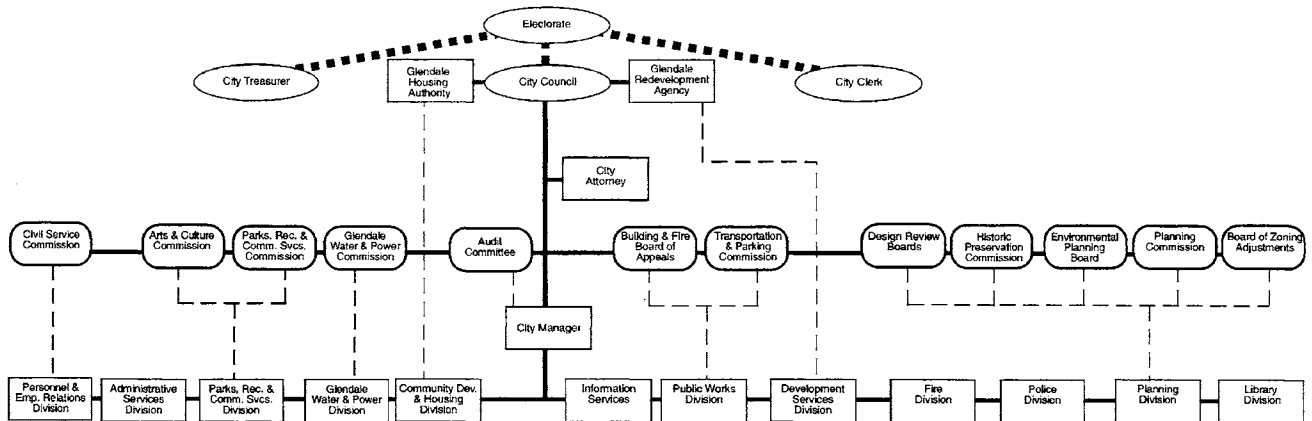
APPOINTED OFFICIALS

| | |
|-------------------|-----------------|
| Scott H. Howard | - City Attorney |
| James E. Starbird | - City Manager |

EXECUTIVES

| | | | |
|---------------------|-------------------------|------------------|---------------------------|
| Randy Adams | - Police Chief | Robert J. Franz | - Administrative Services |
| Jeanne T. Armstrong | - Development Services | Christopher Gray | - Fire Chief |
| Yasmin Beers | - Deputy City Manager | Robert K. McFall | - Assistant City Manager |
| Imelda Bickham | - Information Services | Ignacio Troncoso | - Glendale Water & Power |
| Madalyn A. Blake | - Community Development | Elaine Wilkerson | - Planning |
| George Chapjian | - Parks & Recreation | Stephen M. Zurn | - Public Works |
| William Fox | - City Auditor | VACANT | - Libraries |

**CITY OF GLENDALE
TABLE OF ORGANIZATION**



- Administrative Control
- Electoral Control
- - - - - Advisory Control
- Boards & Commissions

June 2000