

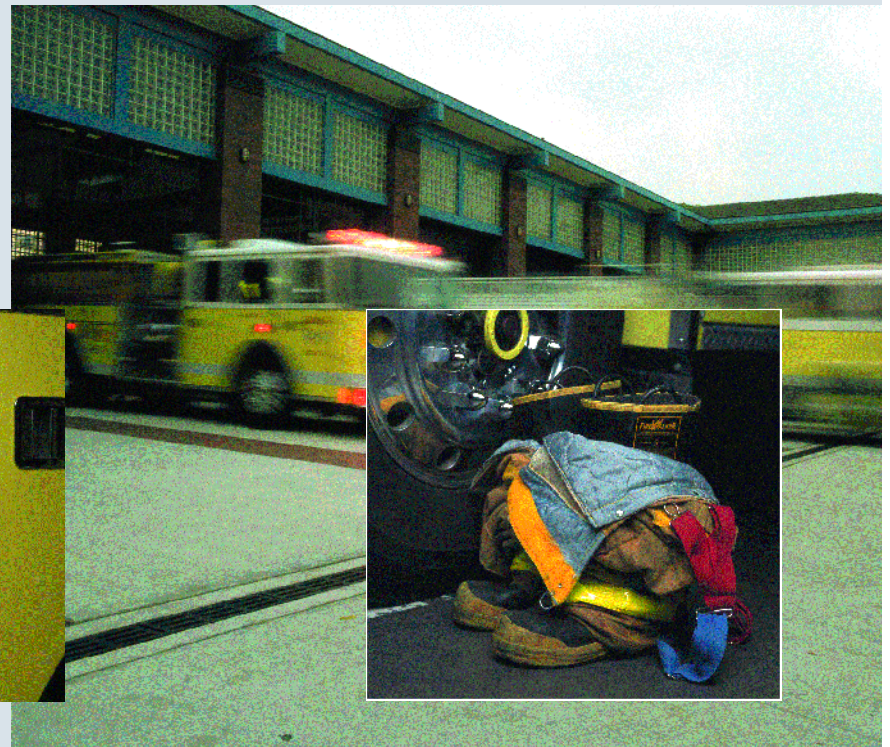
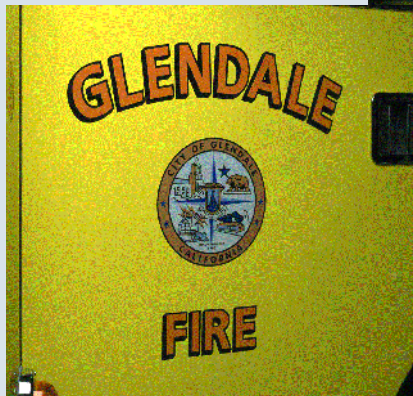
fire

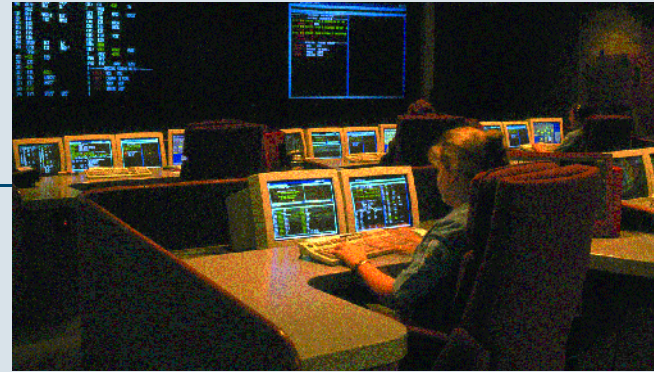
MISSION STATEMENT

Our mission is to prevent or reduce the loss of life and the destruction of property and the environment from fire, medical, hazardous materials and other emergency occurrences.

OPERATING BUDGET (GENERAL FUND)

Salaries and Benefits	\$ 18,025,563
Maintenance and Operation	3,055,578
Capital	242,390
TOTAL	\$ 21,323,531





DESCRIPTION OF SERVICES (General Fund)

FIRE OPERATIONS - 90.11% of Operating Budget

Provides specialized emergency services including fire suppression, emergency medical care, hazardous materials management, urban search and rescue and swift water rescue; maintains fire facilities, apparatus and equipment; performs business and residential fire prevention inspections; and, provides comprehensive fire pre-planning and public education.

FIRE PREVENTION - 6.09% of Operating Budget

Provides plan check and permit services and inspects buildings, occupancies and new construction for compliance with applicable codes. Investigates fires to determine their cause and origin; manages the City's Vegetation Management Program to reduce fire hazards in the urban-chaparral interface; and, operates the Environmental Management Center to ensure the proper handling and management of hazardous wastes.

EMERGENCY SERVICES - .71% of Operating Budget

Ensure that the City and its residents are prepared for disasters. Maintains the City's Emergency Operations Center and regularly conducts exercises to determine that the City organization can quickly and appropriately respond to disaster situations; provides instruction to community groups on emergency preparedness through its Glendale Residents Informed and Prepared Program (GRIP).

FIRE COMMUNICATIONS - 3.09% of Operating Budget

Expenditures for Fire Communications are used to pay Glendale Fire's share of operating the Verdugo Fire Communications Center. Verdugo Center personnel answer fire and emergency medical 911 calls, dispatch appropriate emergency equipment and ensure that all elements of the emergency response system are in communication with each other. The Verdugo Center is operated by Glendale Fire and dispatches fire and emergency medical calls for nine cities.

fire

HAZARDOUS MATERIALS CONTROL (Hazardous Disposal Fund)

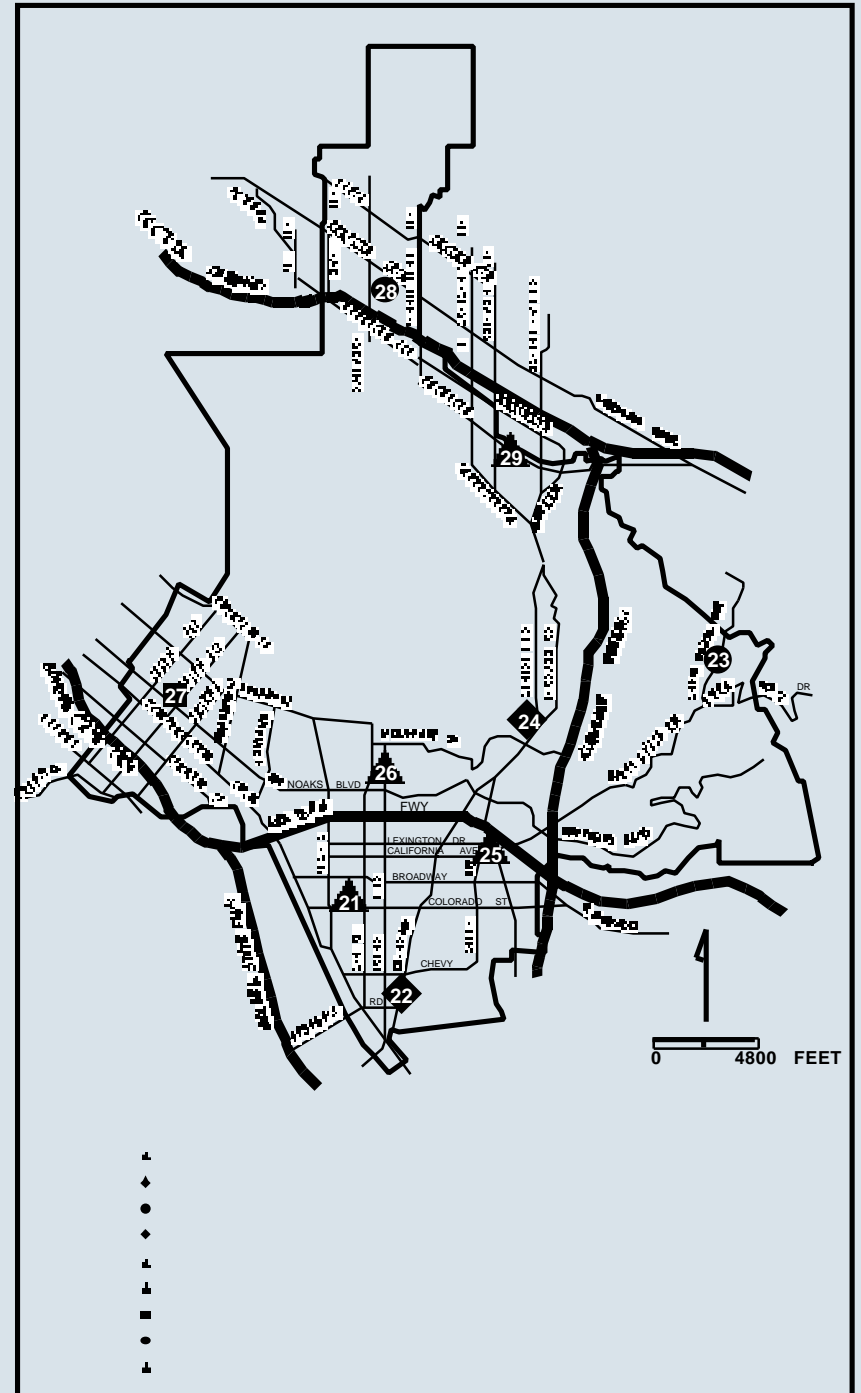
Provides for collection and disposal of household hazardous wastes (by contract, Burbank and La Canada Flintridge). Ensures proper handling and storage of hazardous materials by businesses in the City and provides inspection services for stormwater and industrial waste discharge programs of the City.

Salaries and Benefits	\$ 983,532
Maintenance and Operation	462,667
Capital	22,700
TOTAL	\$ 1,468,899

FIRE PARAMEDICS (Fire Paramedic Fund)

Provides 24hour emergency medical care and transportation to victims of accidents, traumatic illness and other unforeseen medical events. Four paramedic rescue ambulances, two paramedic assessment engines and two paramedic extension engines ensure quick response by trained personnel. Funds are used to pay the salaries of 18 Firefighter/Paramedics and to operate the ambulances, provide training and medical oversight.

Salaries and Benefits	\$ 2,194,203
Maintenance and Operation	732,973
Capital	100,000
TOTAL	\$ 3,027,176



VERDUGO FIRE COMMUNICATIONS (Fire Communication Fund)

Provides fire and medical dispatching for Glendale, Burbank and Pasadena as well as for six other San Gabriel Valley cities. Verdugo annually dispatches more than 48,000 calls for service and serves an area of 110 square miles with a population of more than 642,000 persons.

Salaries and Benefits	\$ 1,229,679
Maintenance and Operation	242,180
Capital	24,072
TOTAL	\$ 1,495,931

