



# COMMUNITY MEETING SUMMARY

## Glendale Narrows Riverwalk–Community Meeting #1 “Jewel at the Bend”

### OVERVIEW:

On September 11, 2014 approximately 70 people gathered to learn about the Glendale Narrows Riverwalk project and to provide input on the location and design of a proposed bridge or bridges across the Los Angeles River and the Verdugo Wash. The meeting was the first of three community workshops.

Riverwalk is a unique community amenity that will increase access for residents and visitors to the Los Angeles River and Griffith Park. Opened to the public in 2012, Riverwalk currently provides a recreational trail, two small parks, public art, and an equestrian facility. It runs from Bette Davis Park on the west to Flower Street on the east and includes a trail south of Flower Street toward the Verdugo Wash (the 134 Freeway).

The City is currently expanding Riverwalk to connect the two trail segments. The project will include bridging an existing storm water culvert and adding two new parks – one at the culvert location to be known as “Flower Plaza” and the other, “Confluence Park”, at the southeast end of the bike path at the Verdugo Wash.

The City is also engaged in a Bridge Selection Study to determine potential locations and designs for the bridge over the Los Angeles River, which will also inform the design of the Verdugo Wash bridge. The Study will provide the background and concepts necessary to seek further funding for the project.

At the community meeting, members of the City-selected design team lead by Atkins presented the project background and alternative bridge location options. The 2011 Riverwalk Master Plan, prepared by the City of Glendale, was referenced and is the basis of the alternate bridge location study. The three potential bridge locations each offer unique opportunities and constraints. Conceptual ideas

**MEETING LOCATION:**  
Pacific Community  
Center Gymnasium  
501 S. Pacific Avenue  
Glendale, CA 91204

**MEETING DATE/TIME:**  
September 11, 2014  
6:30 p.m. - 8:00 p.m.



## COMMUNITY MEETING SUMMARY

### Glendale Narrows Riverwalk-Community Meeting #1 “Jewel at the Bend”

for bridge designs were shown to stimulate public discussion and community input was requested in order to assist in the selection process.

## Outreach Conducted for the September 11, 2014 Workshop

Three weeks prior to the September 11, 2014 Community Meeting #1, Katherine Padilla & Associates (KPA) conducted various public engagement strategies including stakeholder education and involvement of elected officials and members of neighborhood associations, recreational, environmental, community-based and business organizations, and other interested persons. KPA provided:

- One-to-one stakeholder briefings for elected officials including City of Los Angeles councilmembers, California State offices and key stakeholder community organizations;
- A phone call and follow-up email providing project information and a flyer notice for over 20 community organizations;
- Attendance at Glendale City Council and community organization board meetings in the City of Glendale and neighborhoods of Griffith Park/Los Feliz and Atwater Village providing announcement of Community Meeting #1 and meeting flyers to distribute to community members;
- Flyers distributed at public counters in adjacent Los Angeles neighborhoods as well as public counters throughout the City of Glendale;
- Two e-mail blasts notifying community members of the September 11th Community Meeting #1.

## Public Comments



After the presentations, Sam Gennawey of KPA facilitated dialogue about the project. Katherine Padilla Otanez captured the comments during the discussion.

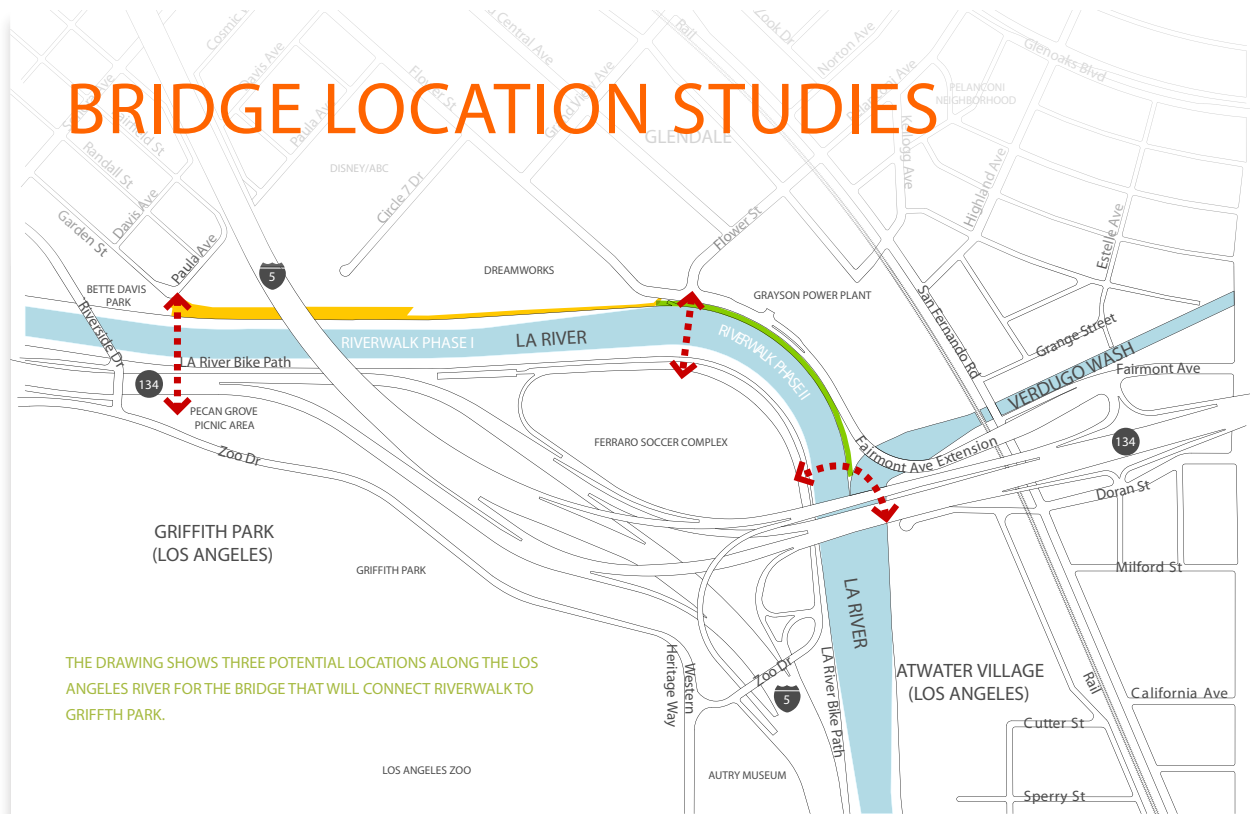
### REACTIONS TO THE EASTERN LOCATION:

- Would love a bridge for equestrians – Riverside Bridge will assist with that
- Maybe a multi-use bridge at the confluence

## COMMUNITY MEETING SUMMARY

### Glendale Narrows Riverwalk-Community Meeting #1

#### "Jewel at the Bend"



#### REACTIONS TO THE CENTRAL LOCATION WHICH FOR MANY SEEMED A HAPPY MEDIUM:

- Favor locations 2 & 3 to get to Griffith Park
- Bridge at Flower (Location 2) or 3rd location seems more useful (than Location 1).
- Location 2- Best location for Disney and Dreamworks
- Lots of parking near north park

#### REACTIONS TO THE SOUTHERN LOCATION:

- Like that it's near Chevy Chase and Atwater (2nd Location okay, 3rd Location better)
- Connects with Brewery - good
- Location #3 preferred because it provides South Glendale access

#### HABITAT COMMENTS:

- How does the project fit into river conservation?

- Consider wildlife habitat.
- The birds won't leave.
- The River is major migratory point for birds; keep impacts in mind.

#### DESIGN COMMENTS:

- The bridge should be simple but elegant with artistic design.
- Ensure adequate alternative ways to provide lighting for security and safety.
- Simple design is better.
- Keep in mind that the bridge should not compete with the natural setting, views of the mountains in the background.
- Provide bi-lingual bridge signage at Cypress/Atwater, maybe at the mid-point of bridge.
- Have path on easterly side—too many pedestrians

## COMMUNITY MEETING SUMMARY

### Glendale Narrows Riverwalk-Community Meeting #1 “Jewel at the Bend”

- Width of bridge needs to allow for horses, bikes, people.
- Ensure location of bridge has public transit access.
- Will there be ADA access?
- Consider what the Bike Path and River will look like in 20 years; design accordingly.
- Need to consider a “greener” –more environmentally –friendly and natural-looking bridge.

#### PROCESS COMMENTS:

- Share info.
- Involve the youth.
- Coordinate with Metro.
- Provide a map that shows other projects in context, i.e., La Kretz Bridge and other Bridges in Atwater.
- Look at all bridges proposed to span the River—needs to be connectivity.

#### GENERAL COMMENTS:

- Need to look at entire composition; the River overall and where bridge crossing is placed or others planned.
- What about Skateboards? (Skateboards are not allowed).
- Slope of Los Feliz bridge is too steep to comfortably and safely accommodate bicycle riders—consider the slope as you design the bridge.
- Any plans between Riverside and Los Feliz? Confluence doesn't seem the safest location for crossing, consider safety first.
- Only two footings/piers are allowed in the River by Army Corps of Engineers. Consider that in designing the bridge span.
- All piles serving as anchors for bridge may need Caltrans review.

## COMMENTS RECEIVED VIA EMAIL

- Hi Peter,

Would it be possible to obtain a copy of the presentation materials featured at last night's Glendale Narrows Riverwalk Bridge Connections Phase III Workshop?

Thanks.

- Hi Peter,

I'm the artist / landscape designer that developed the concept, design and planning for the Public Art works for Phase 1 at the Glendale Narrows Riverwalk Park with North East Trees. I just learned today that there is a community meeting this evening about the future bridges across the L.A. River. I will be there tonight and I'm looking forward to meeting you. In case you haven't seen it, here's a link to a facebook page detailing the timeline of our work on the Riverwalk Public Art and park. At the time of our meetings with the Art Committee at the Community Services & Parks dept. I developed a concept for a Land Art piece for Phase 2. Not sure if that is appropriate for the current spaces or goals. The concept is depicted in one of the albums on the web site below.

<https://www.facebook.com/GlendaleNarrowsRiverwalk>

You can also see some samples of my highly very artistic and sustainable landscape design projects folders on Houzz. A second profile with my art and art projects is in the works.

<http://www.houzz.com/pro/ketti-kupper/ketti-kupper-conscious-life-design>

I'm interested in hearing how things are developing at the Flower Plaza Park and the Confluence Park projects, and I'd be pleased to consult or be involved with the team.

Thanks, hope to see you soon.



## COMMUNITY MEETING SUMMARY

### Glendale Narrows Riverwalk-Community Meeting #1 "Jewel at the Bend"

- To whom it may concern,

My name is Kristy Noochlaor and I am the field deputy for the Silver Lake and Los Feliz area at Council District 4. Unfortunately, I am unable to attend today's meeting but I was wondering if there will be minutes taken? Please let me know.

- Dear Peter:

I am a longtime Glendale resident and avid bicyclist and writing at the suggestion of Erik at Walk/Bike Glendale. I am very enthusiastic about the idea of connecting the two banks of the LA River at the Verdugo Wash. I've long wondered why a bridge could not be anchored to the 134 Freeway bridge overhead. Obviously, a separate independently designed bike pedestrian bridge would be preferable, but if money is short, is it possible to hang one from the freeway bridge overhead? Also, I have often wondered why a bike, pedestrian bridge could not be laid over the top of the already existing pylons from what I believe was the Pacific Electric train bridge over the river just south of Glendale Avenue. It's wide enough to make a terrific 'Highline Park' type of mini-park over the river. It's west of your jurisdiction, but I think needs to be explored. As it is, bikers and walkers coming from the south on the river trail, must exit through a hole in the freeway fence onto the off ramp and then the sidewalk, or cross under on the bike path and double back to the sidewalk to get to the east side of the river. Both very unsatisfactory. I am unable to attend the planning meeting on this, but wanted to add my suggestions.

- Hello,

Thank you so much for having the community meeting to inform the surrounding residents, businesses and the population impacted by the future developments. We are all very excited to see that the city of Glendale is making this an interactive process.

I do have to preface my statement below/attached by saying that I am familiar with the Design Guidelines that were agreed upon in 2003 for the Grand Central Creative Campus (GC3) and occasionally commute to GC3 by bike from my home in the Los Feliz area of Los Angeles. Thank you.

## COMMENTS SUBMITTED VIA COMMENT CARDS

- **Comment:** As the Glendale Grand Central Creative Campus (GC3) continues to densify, it is important to provide alternative modes of transportation to help off-set additional road traffic to an already congested location. Bridge #2 (Flower St.) would be the best, most direct path for these pedestrian/bike commuters. It would avoid urbanizing the neighborhood at bridge site #1 (Paula) by not overly stressing their residential roads with hordes of bike commuters.
- **Comment:** An aesthetic comment: The River has been wrapped in a concrete straightjacket for forty years. Please avoid a highly industrialized/futuristic design. It would be helpful to imagine the river as it would be post Alt. 20 to select what would be appropriate.
- **Comment:** Thanks. I learned a lot.
- **Comment:** Keep in mind the ecology (especially bird migrations, fish and coyotes) of the area. Tasteful simplicity in construction. Public Access!!!
- **Comment:** Excited to learn about this project and what it will bring to the neighborhoods in the area. Incorporate the wetlands/natural resources. Select building materials that create an accessible route for everyone-cyclists, pedestrians and those who use wheelchairs or hand cycling as a mode of transportation.
- **Comment:** I fully support any path using Doran to cross the LA River. I would like to see a Glendale

## COMMUNITY MEETING SUMMARY

### Glendale Narrows Riverwalk-Community Meeting #1 “Jewel at the Bend”

side developed further (beyond what is behind Dreamworks). Let’s expand and make this goal.

- **Comment:** The LA River Revitalization Corporation supports the connectivity options through the Glendale Riverwalk Phase III efforts to the Los Angeles community of Atwater Park. Given the future river access “landing” co-adjacent to LA Kretz River Bridge and the launch of activities for LA, Glendale and Griffith Park via bike and run activities! We are all for connecting the 51 miles of the River and fun access with connectivity points.

## Summary

---

The broad consensus obtained from the first community workshop was as follows:

- Flower Plaza Park area is the preferred location for the LA River Bridge.
- Verdugo Wash Bridge crossing is needed.
- A simple elegant bridge design is preferred.
- Parking availability is a concern.

## COMMUNITY MEETING SUMMARY

Glendale Narrows Riverwalk-Community Meeting #1

“Jewel at the Bend”

# APPENDIX A

---

## Agenda



**GLENDAL NARROWS RIVERWALK PROJECT  
"JEWEL AT THE BEND"  
PHASES II AND III**

**COMMUNITY MEETING #1 – PACIFIC COMMUNITY CENTER GYMNASIUM  
THURSDAY, SEPTEMBER 11, 2014  
MEETING TIME: 6:30 – 8 PM**

**AGENDA**

Welcome and Introductions - Roubik Golanian, City of Glendale

Project Background and Brief History - Jess Duran, City of Glendale

Project Team introduction - Jess Duran, City of Glendale

Review of Outreach Process and Mechanics - Katherine Padilla Otanez

MP/Constrains and Opportunities - John Merkler

How Site Locations Inform Bridge Design - Joe Tognoli

Moderation of Workshop Discussion - Sam Gennaway

Documentation of comments during discussion - Katherine Padilla Otanez

Wrap up of point and collecting of similar comments/Stay Informed - Sam Gennaway

Next Steps - John Merkler/Joe Tognoli

Thank You - City of Glendale



## COMMUNITY MEETING SUMMARY

Glendale Narrows Riverwalk-Community Meeting #1  
“Jewel at the Bend”

# APPENDIX B

---

Flyer

# The City of Glendale invites you to discuss the Glendale Narrows Riverwalk Bridge connecting Glendale to Los Angeles and Griffith Park.



## COMMUNITY MEETING #1

Thursday, September 11, 2014

6:30 – 8 pm

Pacific Community Center Gymnasium

501 S. Pacific Avenue

Glendale, CA 91204

MEETING TOPIC: Location and concept of a LA River and Verdugo Wash bridge

FOR MORE INFORMATION, CONTACT:

Peter Vierheilig, R.L.A., Project Manager

City of Glendale, Public Works Engineering

(818) 937-8263 • [pvierheilig@glendaleca.gov](mailto:pvierheilig@glendaleca.gov)

Refreshments will be served

### Glendale Narrows Riverwalk Project, Phases II and III “Jewel at the Bend”

The Vision: Glendale Narrows Riverwalk is a unique community amenity that will increase access for residents and visitors to the L.A. River and Griffith Park, improve connectivity and safety to bicycle, pedestrian, and possibly equestrian paths, and provide a gateway to the Grand Central Creative Campus, River Glen Opportunity Area, and the San Fernando Creative Corridor.



## COMMUNITY MEETING SUMMARY

Glendale Narrows Riverwalk-Community Meeting #1  
“Jewel at the Bend”

# APPENDIX C

---

Power Point Presentation





# GLENDALE NARROWS RIVERWALK PROJECT “JEWEL AT THE BEND”



Community Workshop #1 | September 11, 2014



# WHO WE ARE

## **CITY OF GLENDALE**

Community Services & Parks

Marc Stirdivant

Emil Tatevosian

Public Works

Peter Vierheilig

Kevin Carter

## **DESIGN TEAM**

Atkins – PM/Engineering

John Merkler AIA

TY Lin – Bridge Design

Joe Tognoli

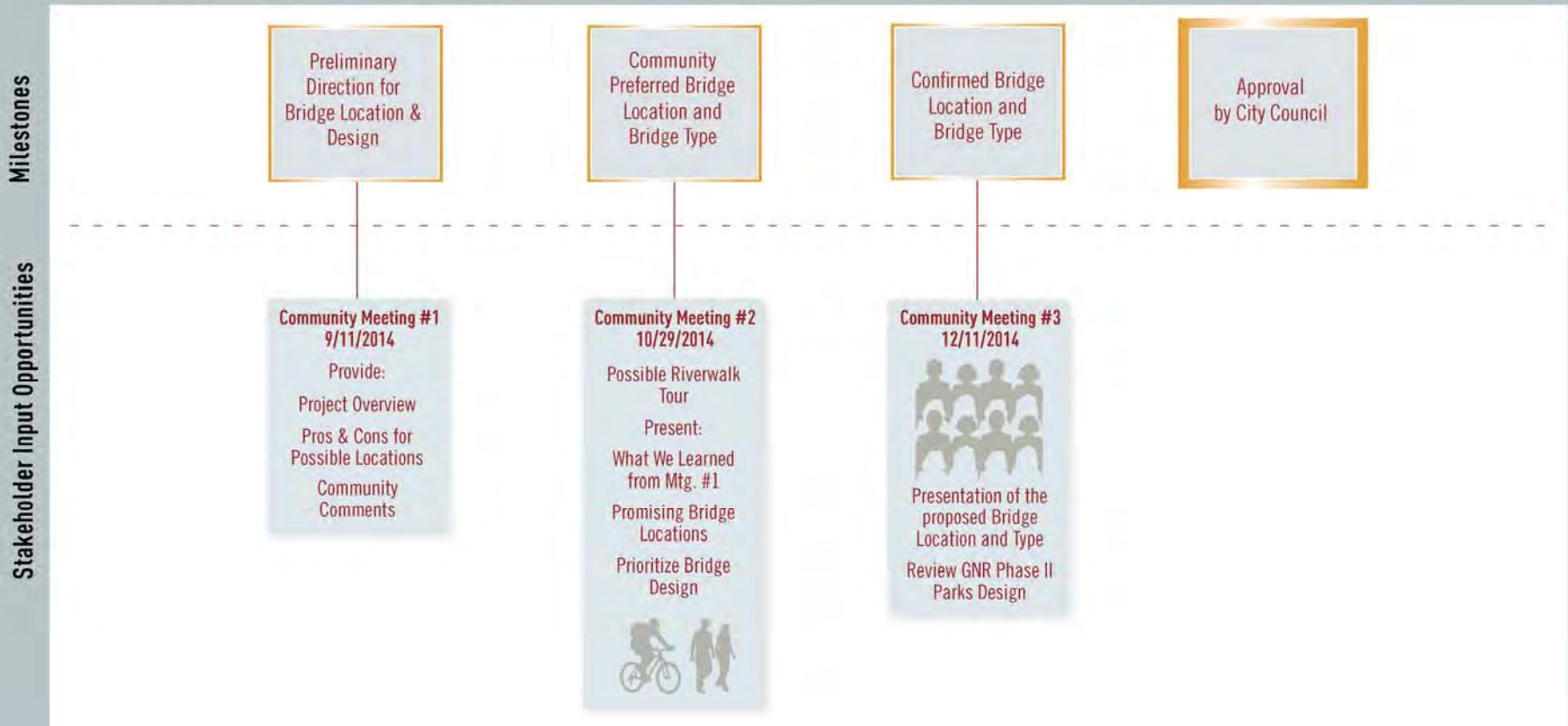
Katherine Padilla Associates – Outreach

Katherine Padilla

# Glendale Riverwalk Phases II and III

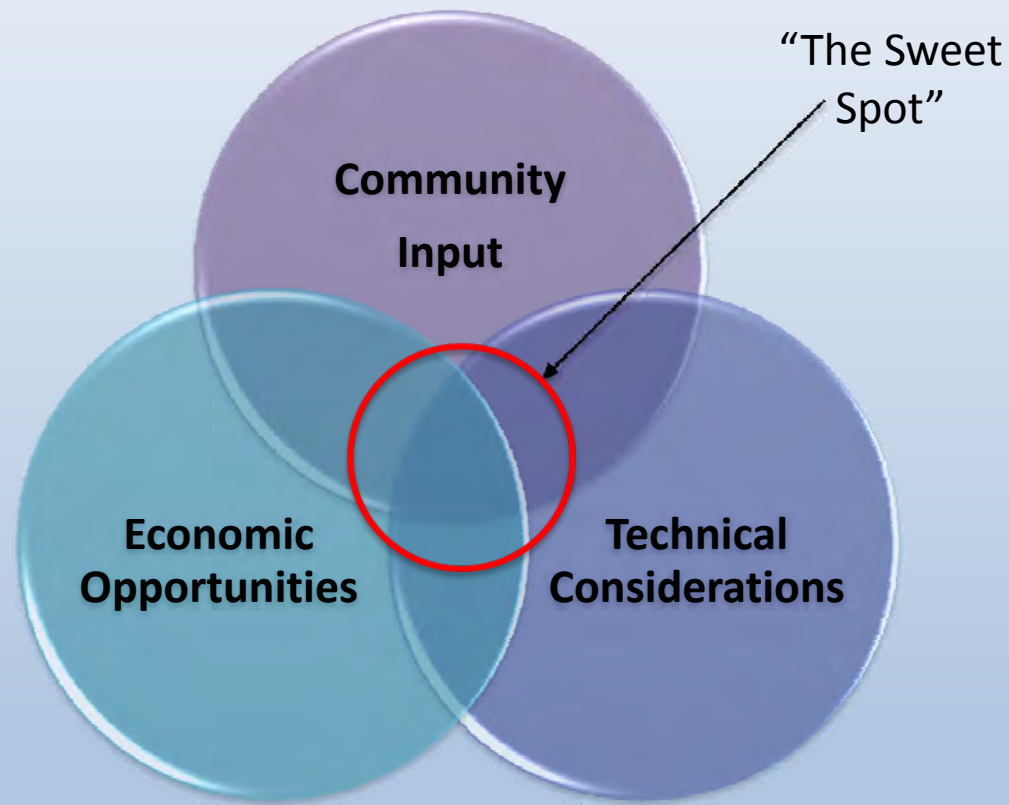
## A Joint Community/City Partnership

### The Public Participation Process:





# KEY FACTORS INFLUENCING PROJECT DECISIONS

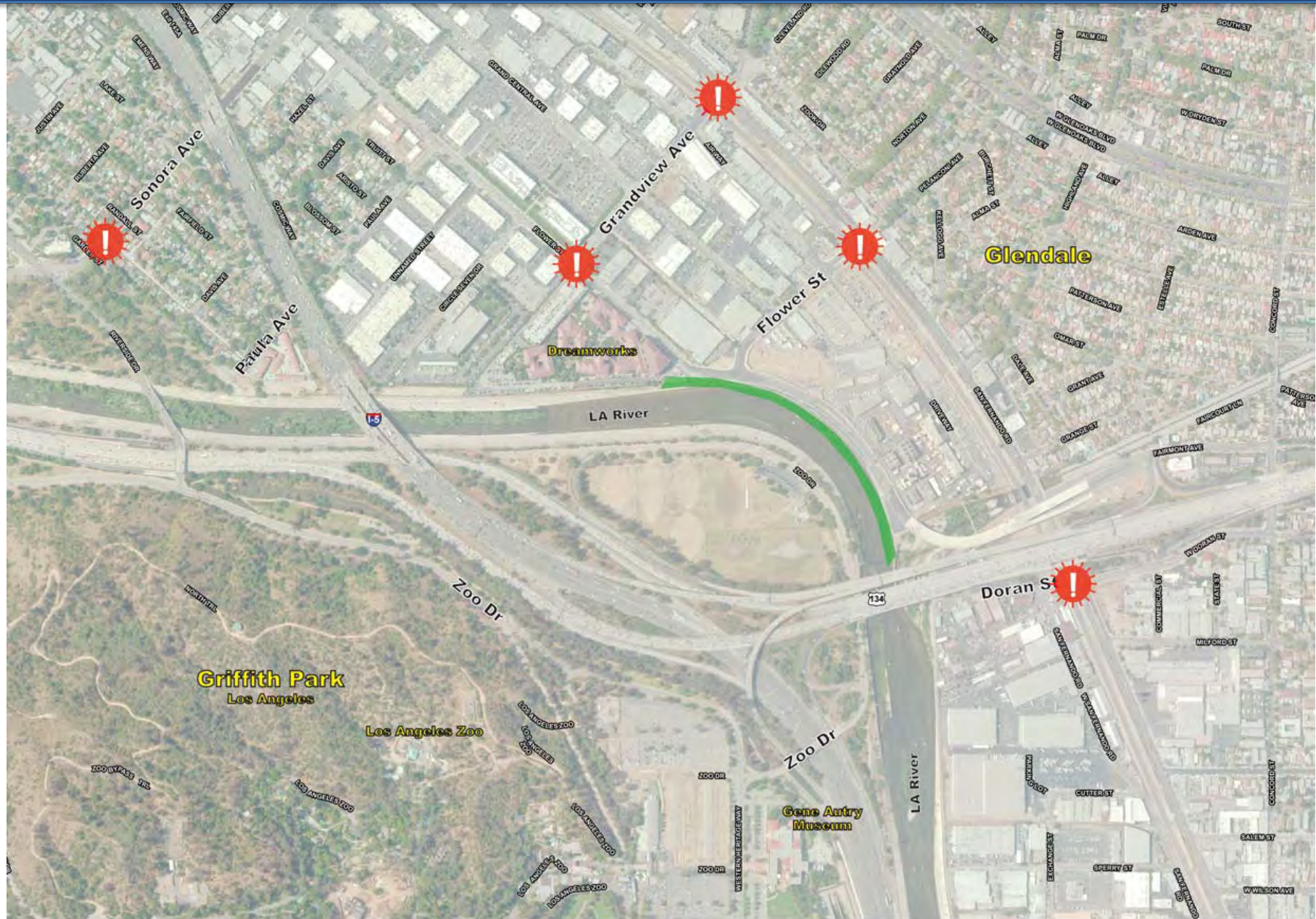


# EXISTING RIVERWALK PHASE 1



GLENDAL NARROWS RIVERWALK PROJECT - "JEWEL AT THE BEND"









# GATEWAYS

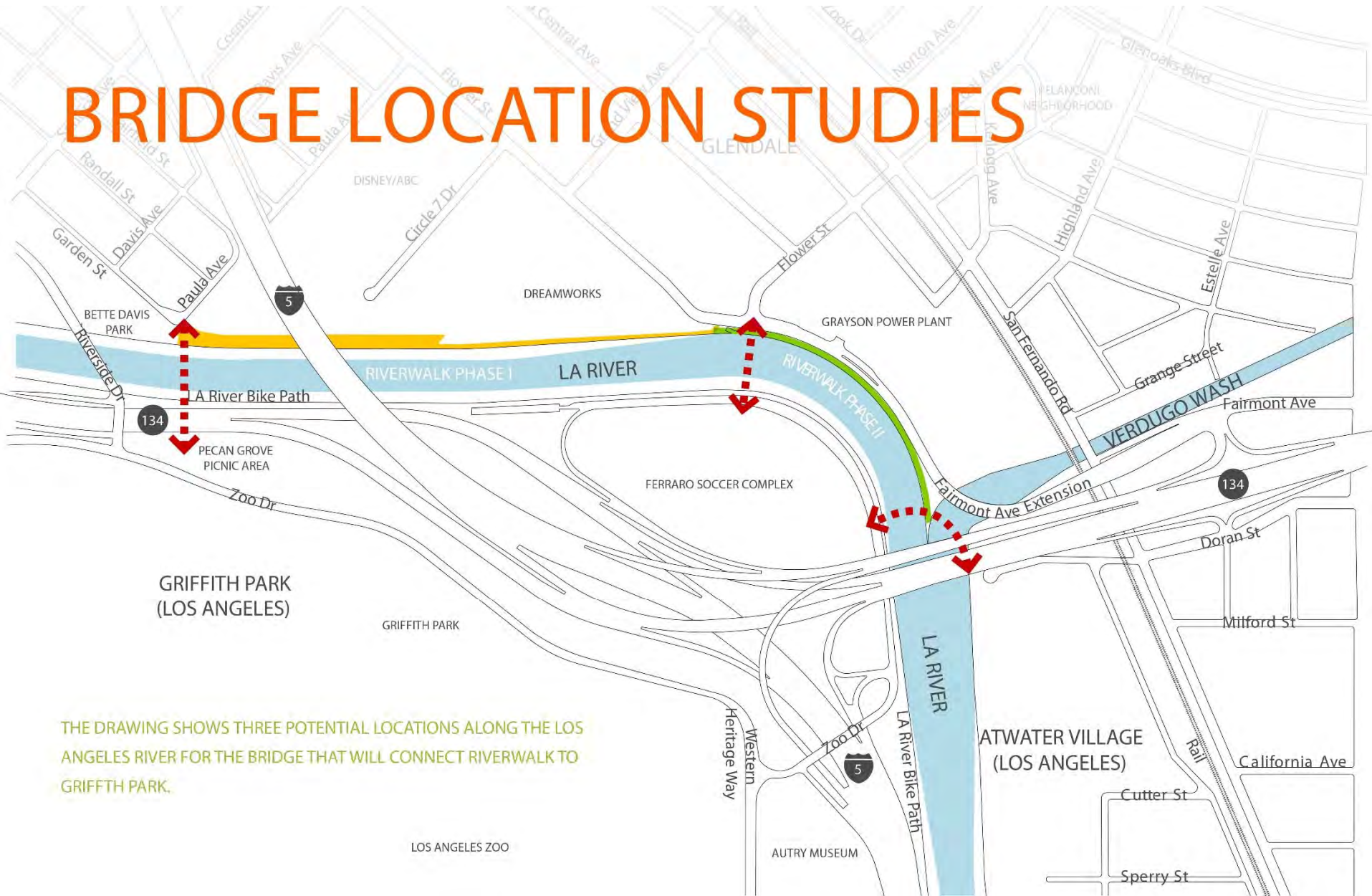


 Riverwalk Phase II  Proposed Access Point

GLENDALE NARROWS RIVERWALK PROJECT - "JEWEL AT THE BEND"



# BRIDGE LOCATION STUDIES



THE DRAWING SHOWS THREE POTENTIAL LOCATIONS ALONG THE LOS ANGELES RIVER FOR THE BRIDGE THAT WILL CONNECT RIVERWALK TO GRIFFITH PARK.

## Bridge Design



Bridge should consider Glendale's Rancho history

Bridge should be similar to existing historical bridges of the area

The bridge design should not look thematic

Bridge design should take into account already existing historical nature of Griffith Park

The bridge should be wide enough to comfortably accommodate pedestrians and bicyclists

A utilitarian aesthetic may best be suited for the bridge so that the existing nature of the site is highlighted

The bridge design could take into account the fact that an airport used to be located where Disney is currently

Bridge could connect to the LA Zoo

**Interpretive & educational purpose**

Bridge design should be historic in nature

**Contextual emphasis**

The bridge should be a very visible, Gateway element

Bridge could incorporate interpretive signage or kiosks with historic/nature-oriented information

Griffith Park is a historic monument and has historic structures on its grounds that the bridge should take into account

**Visible gateway element**

Bridge design should remain as natural and simple as possible

Bridge presents an opportunity to explain/interpret historic aspects of Glendale

**Create access to local amenities**

The bridge design itself should tell a story about Glendale and therefore not need have kiosks or interpretive signage

Bridge design might take into account the frog, ostrich, and flower farms that once existed close to the site

Bridge design should continue on the aesthetic of existing historic bridges like Riverside Drive bridge

Bridge design should take into account cinematic history of Glendale

The bridge should be high enough for visibility from afar

Bridge could serve an educational purpose





# STRUCTURE IN CONTEXT



# BORREGAS AVENUE BICYCLE/PEDESTRIAN OVERCROSSING — BOX CIPPER BRIDGE





# BELMONT AVENUE BRIDGE — BOX GIRDER BRIDGE





# ROSE CREEK PEDESTRIAN BRIDGE — BOX GIRDER BRIDGE



# PACIFIC COAST HIGHWAY PEDESTRIAN BRIDGE — BOX GIRDER BRIDGE





# HARBOR DRIVE PEDESTRIAN BRIDGE — SUSPENSION BRIDGE





# LUSAIL PEDESTRIAN BRIDGES — CABLE STAYED BRIDGE





# TEMPE TOWN LAKE PEDESTRIAN BRIDGE — ARCH BRIDGE





# LAKE HODGES BICYCLE/PEDESTRIAN BRIDGE — STRESS RIBBON BRIDGE

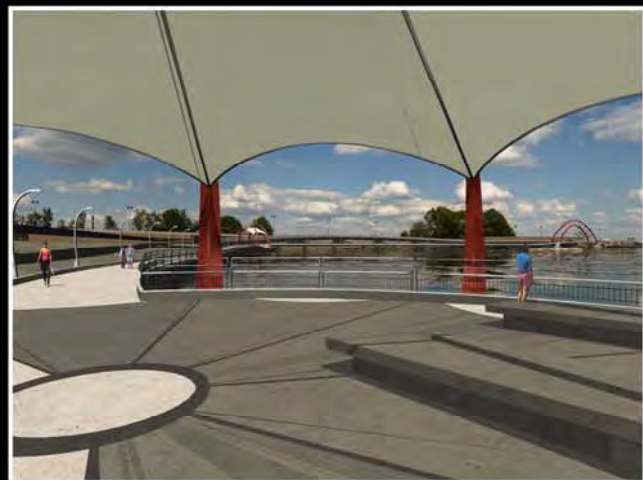
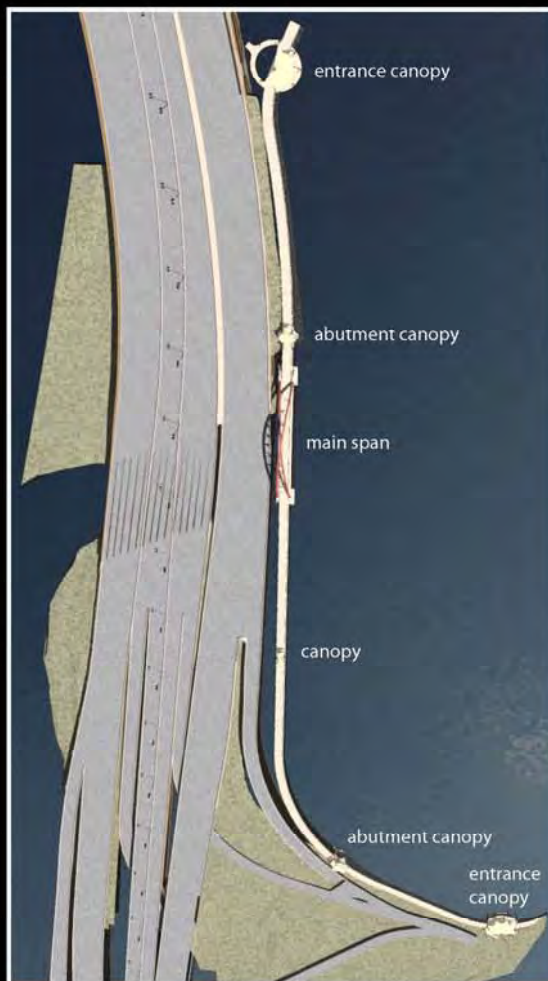




# I-4 LAKE IVANHOE PEDESTRIAN BRIDGE — ARCH BRIDGE



# I-4 LAKE IVANHOE PEDESTRIAN BRIDGE — ARCH BRIDGE

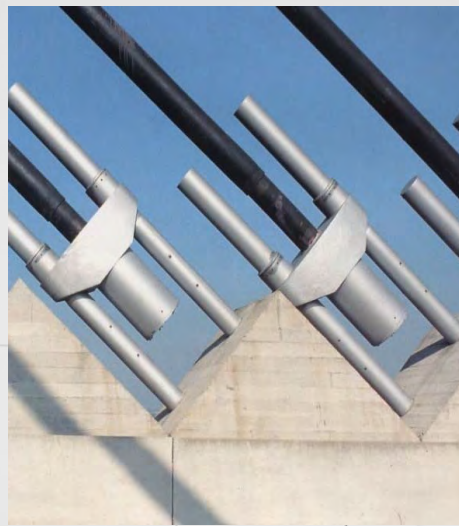




# MARY AVENUE BRIDGE, EMERYVILLE AMTRAK STATION BRIDGE, AND BERKELEY AQUATIC PARK BRIDGE







**DETAILS**

# HARBOR DRIVE PEDESTRIAN BRIDGE





# HARBOR DRIVE PEDESTRIAN BRIDGE





# HARBOR DRIVE PEDESTRIAN BRIDGE



- **Community Meeting #2**

**Wednesday, October 29, 2014**

Project Walk, 4 - 5:30 pm, GNR Entry Park,  
intersection of Paula Street & Garden Avenue

***Sign up this evening for the Project Walk!***

**Project Meeting, 6:30 – 8 pm**

Pacific Community Center Gymnasium  
501 S. Pacific Avenue, Glendale, CA 91204

- **Community Meeting #3**

**Thursday, December 11, 2014**

**6:30 – 8 pm**

Pacific Community Center Gymnasium  
501 S. Pacific Avenue, Glendale, CA 91204

- Contact Peter Vierheilig, R.L.A.  
Project Manager, City of Glendale  
Public Works Engineering  
at (818) 937-8263, or  
[pvierheilig@glendaleca.gov](mailto:pvierheilig@glendaleca.gov)



A grayscale photograph of a river bend. In the foreground, a chain-link fence runs along the left side. The river flows from the left towards the right, where it bends. In the background, there are industrial structures, including a large cooling tower on the left and a bridge or overpass on the right. The sky is overcast.

# THANK YOU!