



# GLENDALE NARROWS RIVERWALK PROJECT "JEWEL AT THE BEND"



Community Workshop #2 | October 29, 2014

# WHO WE ARE

## **CITY OF GLENDALE**

Public Works

*Roubik Golanian*

*Peter Vierheilig*

*Kevin Carter*

Community Services & Parks

*Jess Duran*

*Marc Stirdivant*

## **DESIGN TEAM**

Atkins – PM/Engineering

John Merkler AIA

TY Lin – Bridge Design

Joe Tognoli/Michael Fitzpatrick/Hunter

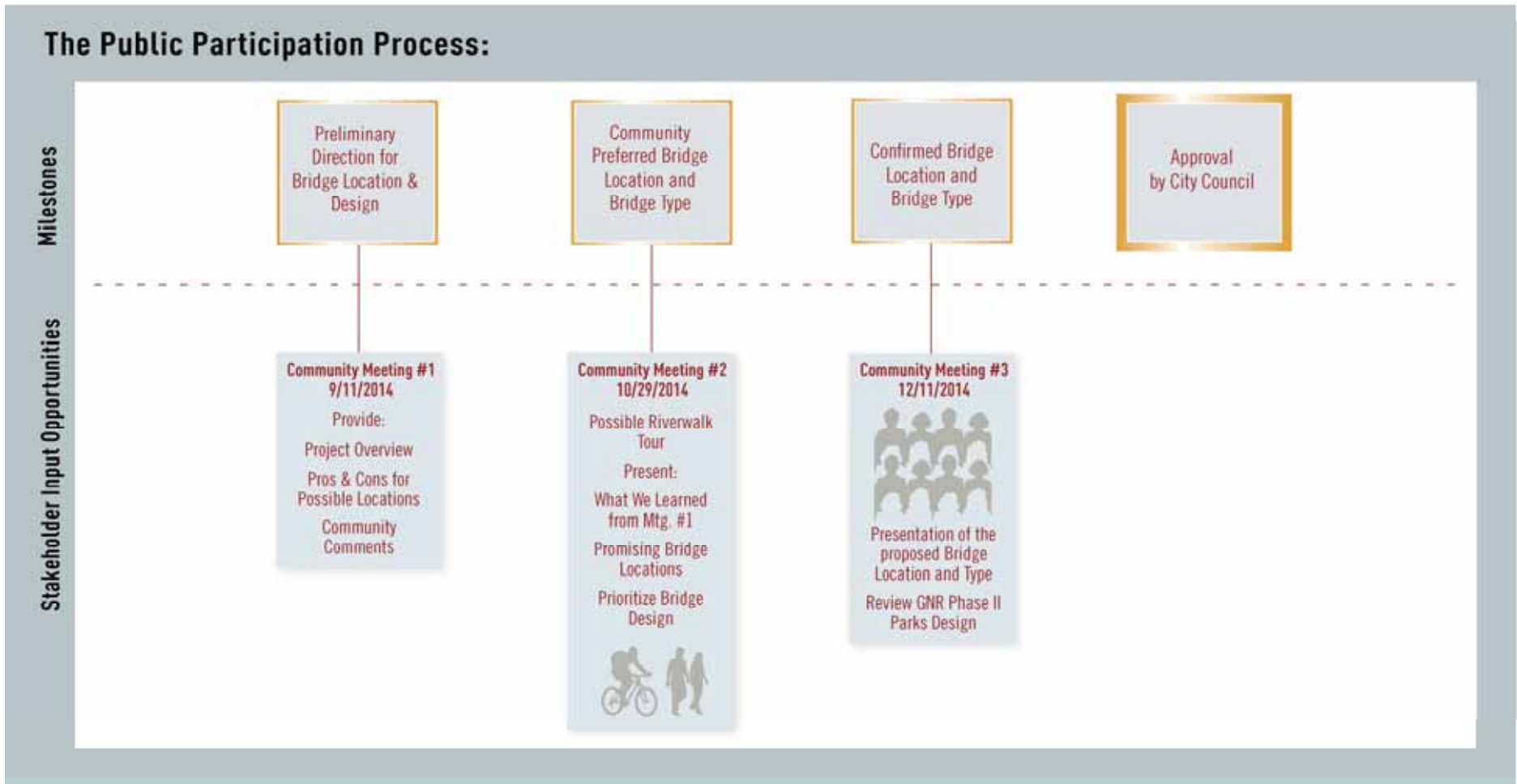
Ruthrauff

Katherine Padilla Associates – Outreach

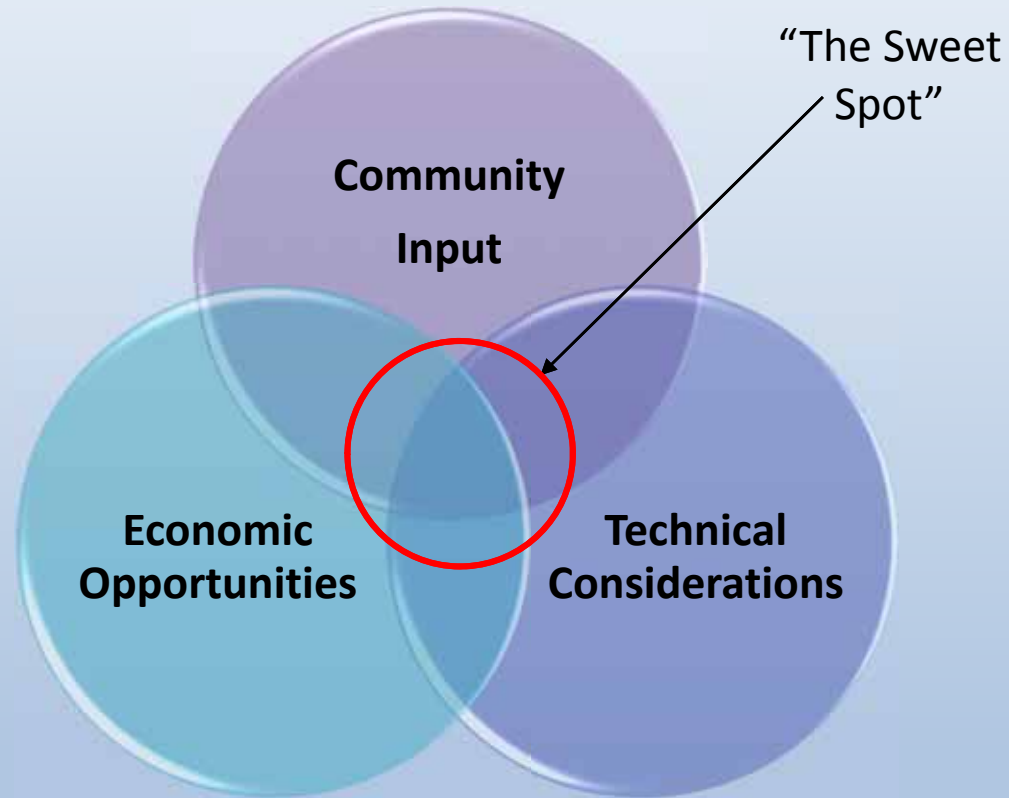
Katherine Padilla

# WHAT WE AIM TO ACCOMPLISH

## Glendale Riverwalk Phases II and III A Joint Community/City Partnership



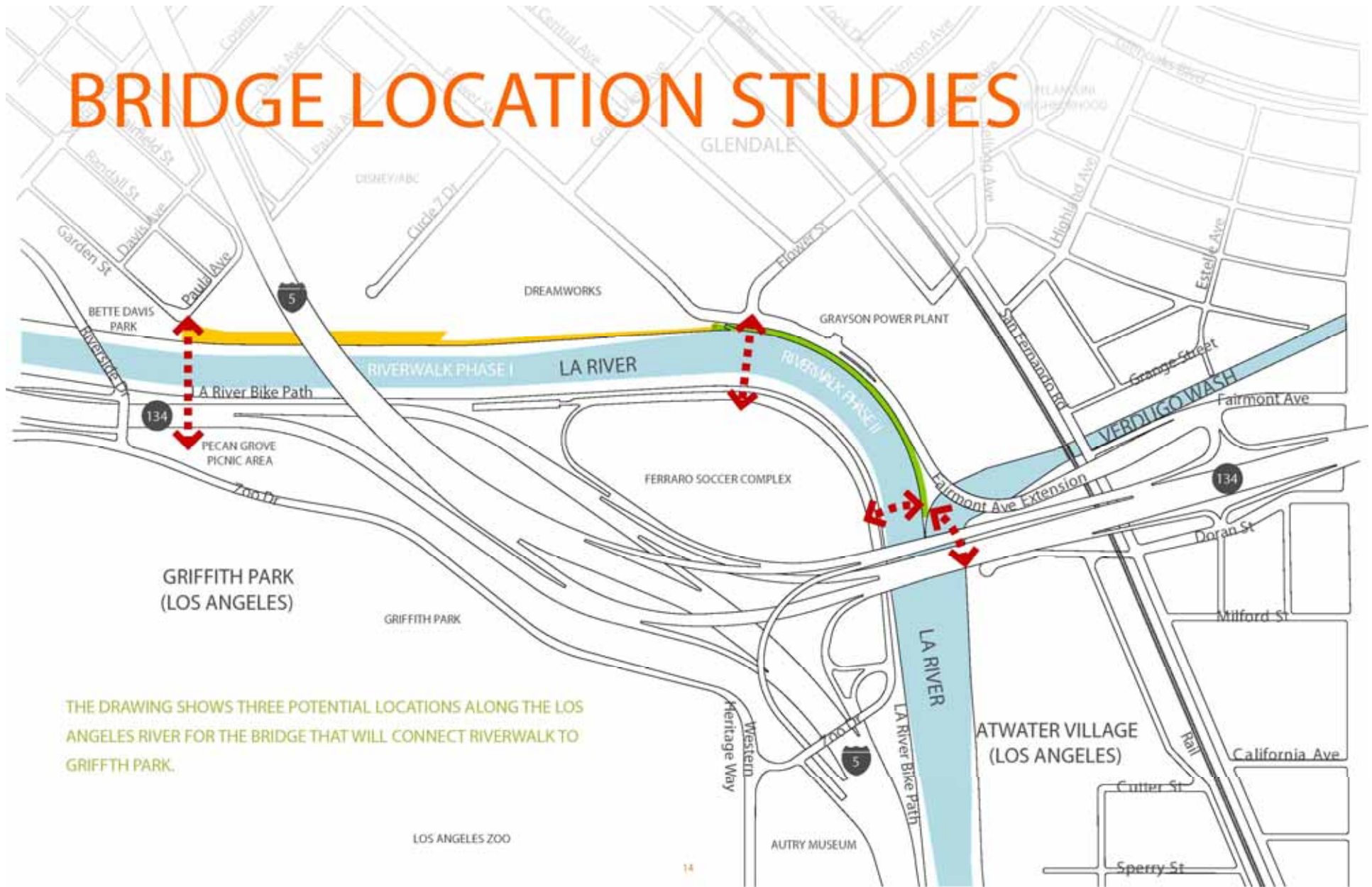
# KEY FACTORS INFLUENCING PROJECT DECISIONS



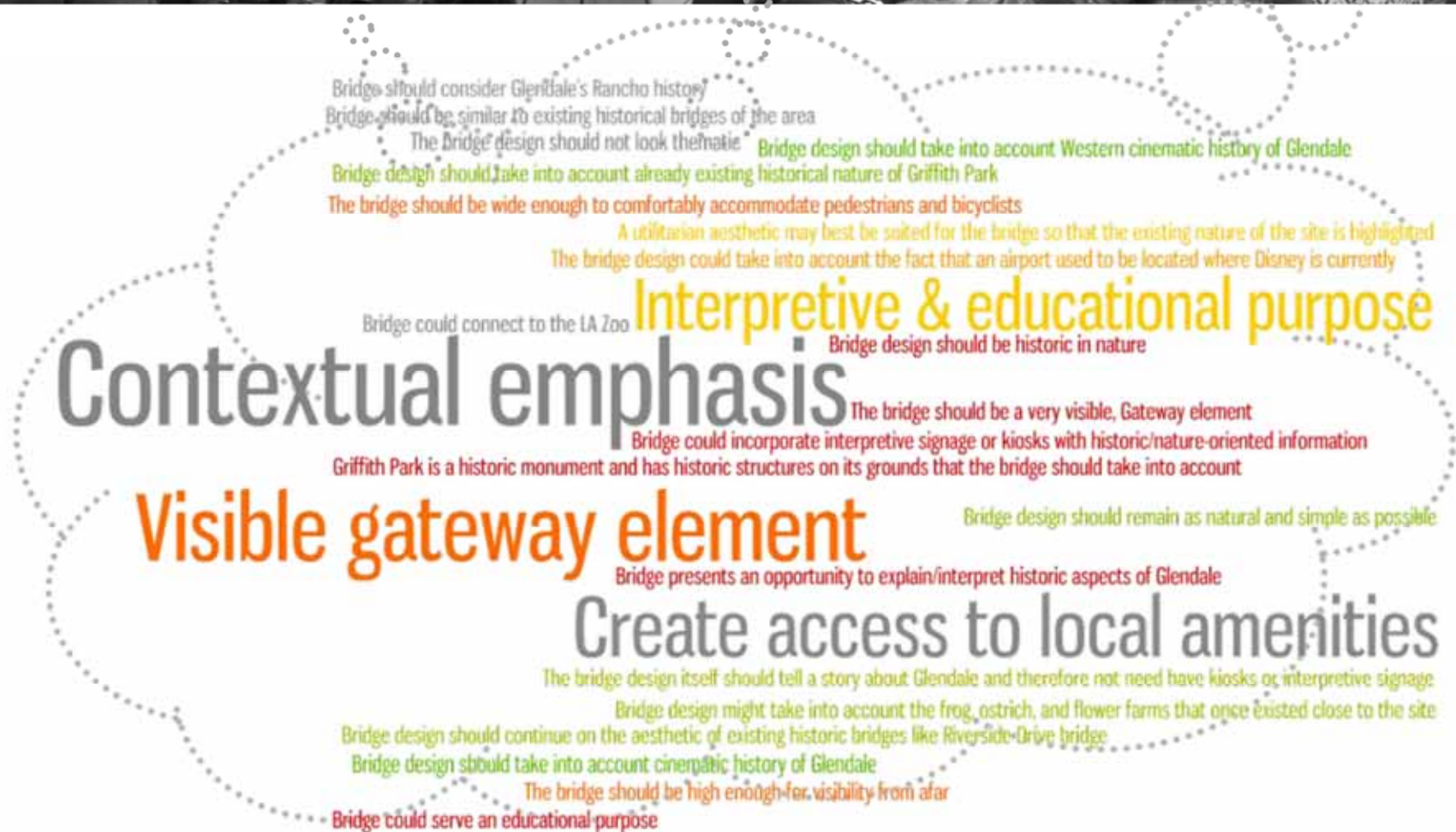
- Review Workshop #1
  - 2010 Master Plan review
  - Differentiators of bridge locations
  - What we learned
- Bridge type opportunities presentation
  - Bridge location creates options for bridge design
  - Voting and Q/A
  - Bridge directions
- Bridge development for Workshop #3

# WORKSHOP #1 BRIDGE LOCATION REVIEW

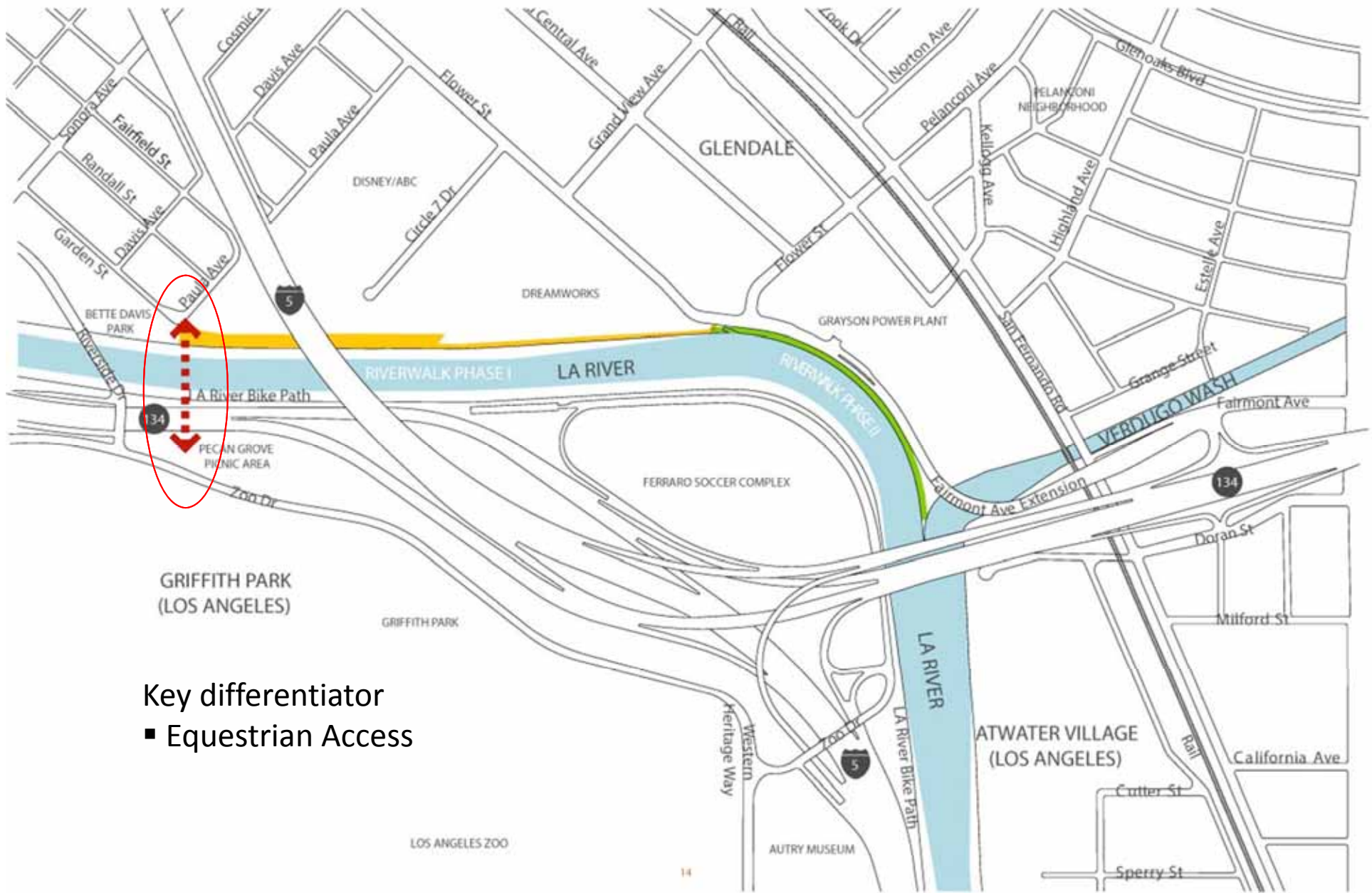
## BRIDGE LOCATION STUDIES



# Bridge Design



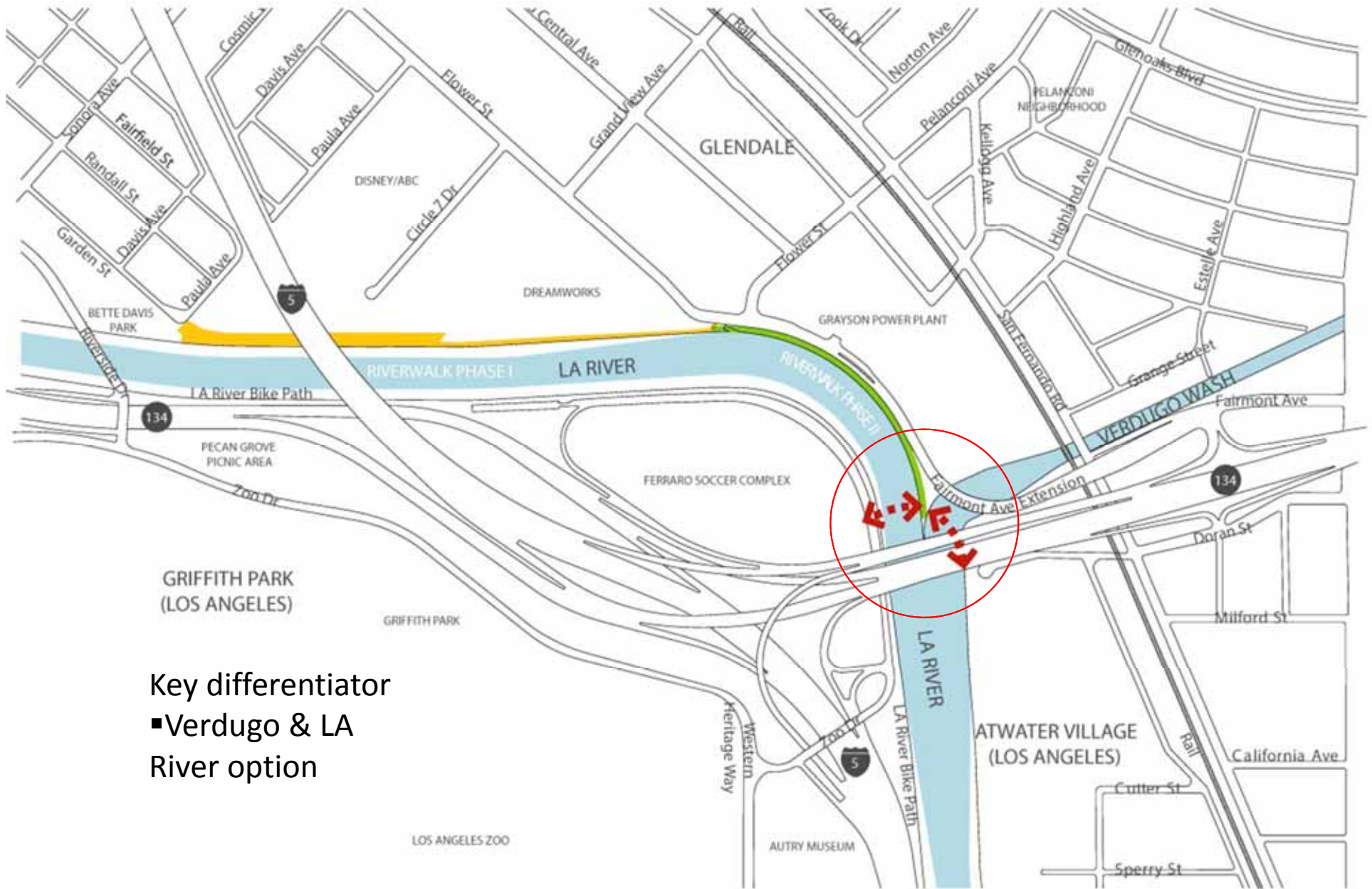
# WORKSHOP #1 BRIDGE LOCATION REVIEW



- Key differentiator
- Equestrian Access



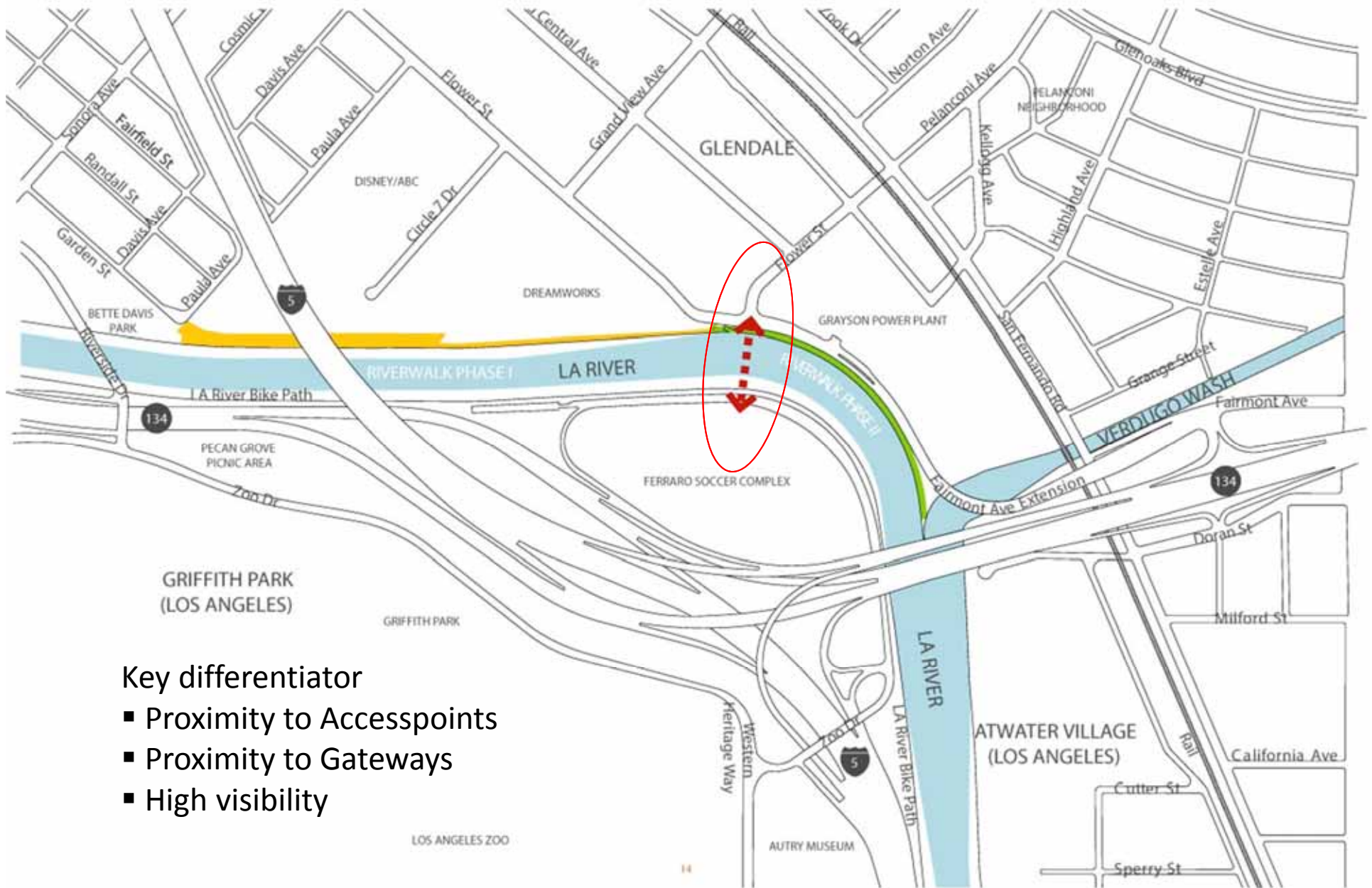
# WORKSHOP #1 BRIDGE LOCATION REVIEW



Key differentiator

- Verdugo & LA River option

# WORKSHOP #1 BRIDGE LOCATION REVIEW

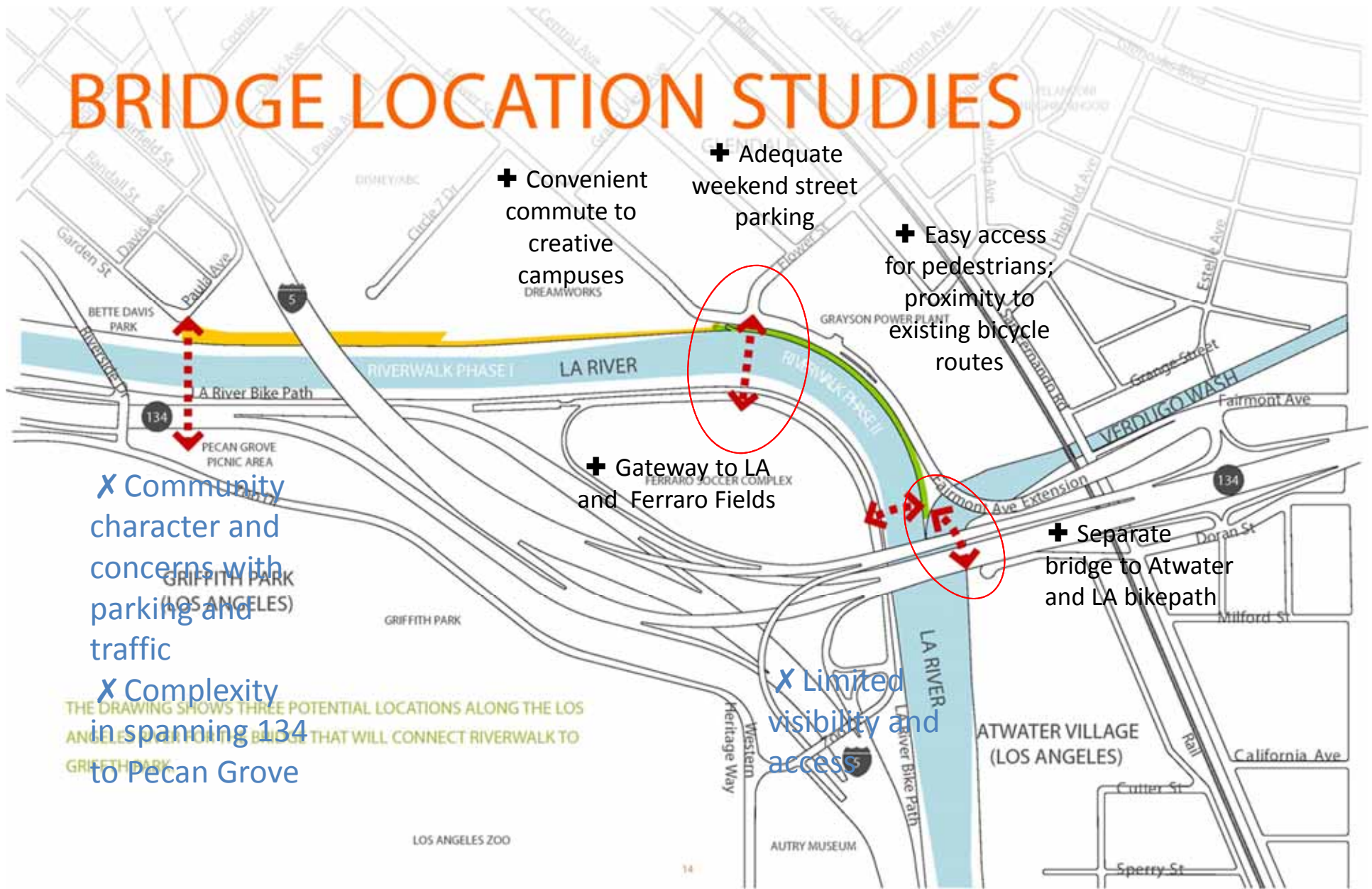


## Key differentiator

- Proximity to Accesspoints
- Proximity to Gateways
- High visibility

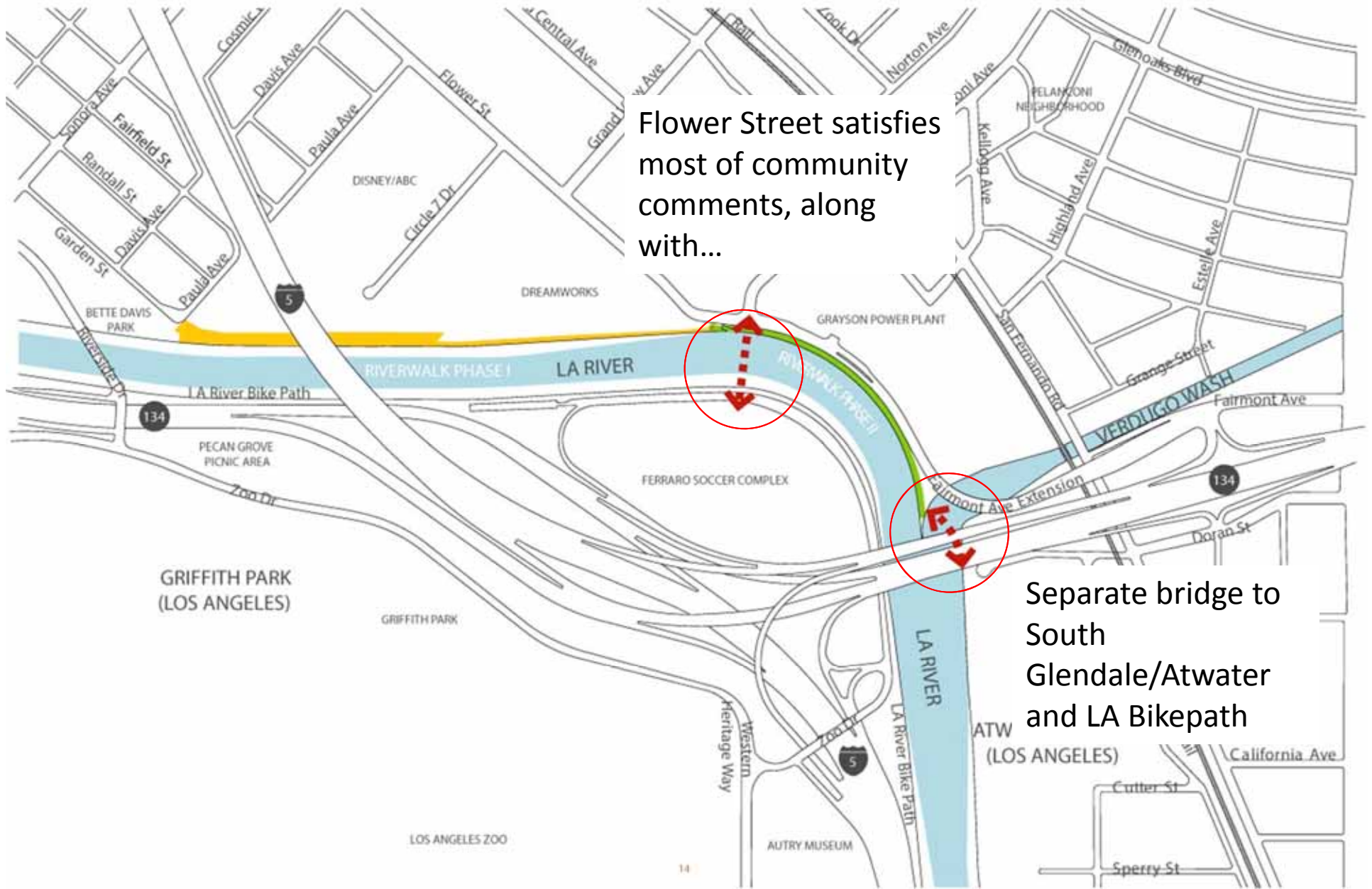
# WORKSHOP #2 BRIDGE LOCATION ANALYSIS

## BRIDGE LOCATION STUDIES





# WORKSHOP #2 BRIDGE LOCATION REVIEW



Flower Street satisfies most of community comments, along with...

Separate bridge to South Glendale/Atwater and LA Bikepath

## SITE VIEWS FROM CENTRAL LOCATION – UPSTREAM



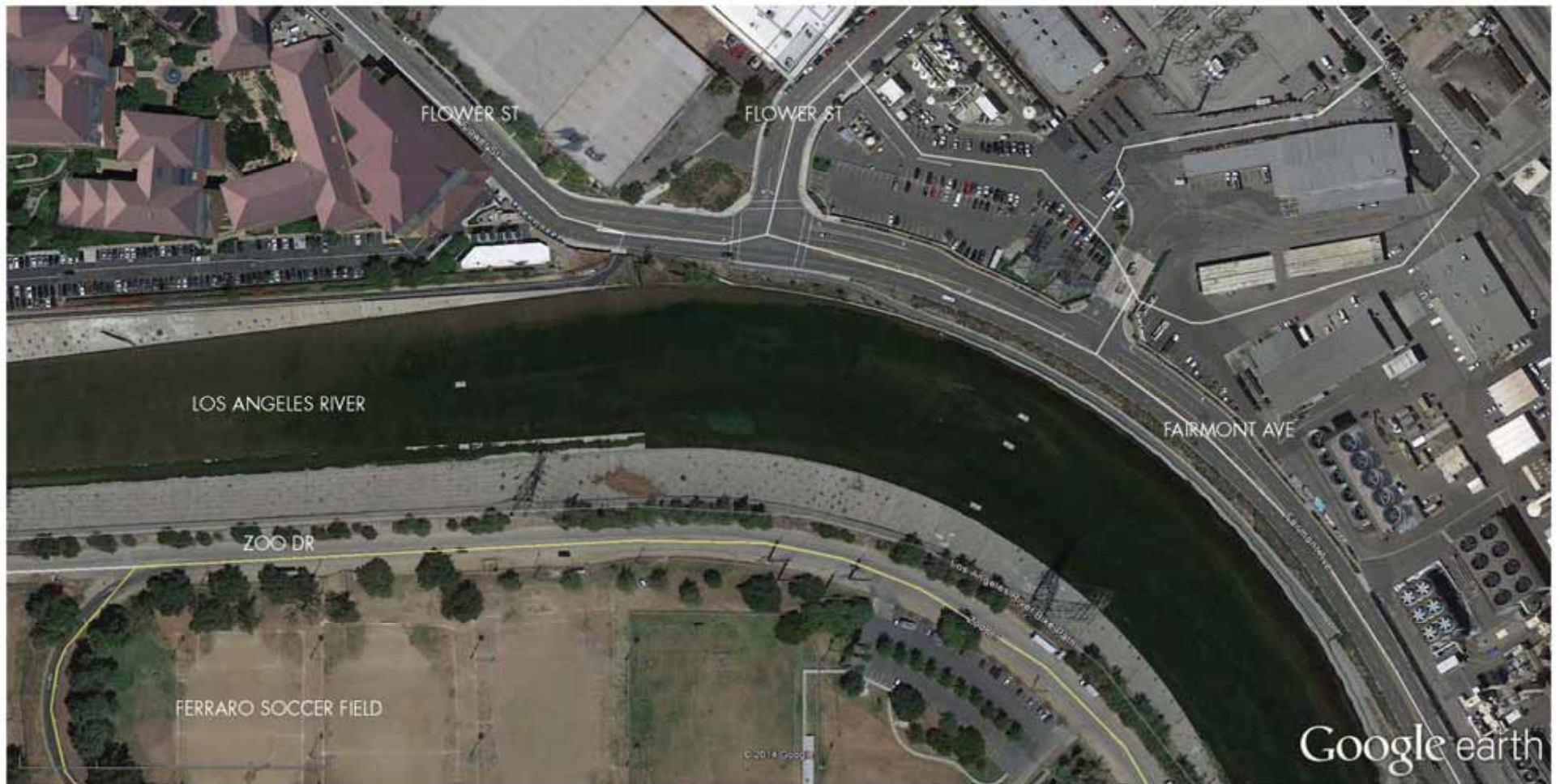
GLENDALE NARROWS RIVERWALK PROJECT - "JEWEL AT THE BEND"

## SITE VIEWS FROM CENTRAL LOCATION – DOWNSTREAM



GLENDALE NARROWS RIVERWALK PROJECT - "JEWEL AT THE BEND"

# SITE AERIAL



GLENDALE NARROWS RIVERWALK PROJECT - "JEWEL AT THE BEND"



# LANDSCAPE PLAN AND SITE SECTION

- LEGEND
- ① Asphalt Bicycle/Pedestrian Path
  - ② New Guard Rail
  - ③ Wood Deck Culvert Bridge
  - ④ Native Planting Area
  - ⑤ Decomposed Granite Paving
  - ⑥ Retaining Wall with Mural or Gateway Element
  - ⑦ Art Element
- 
- ⊙ Potential Future Bridge Landing
  - ⊙ Temporary Overlook



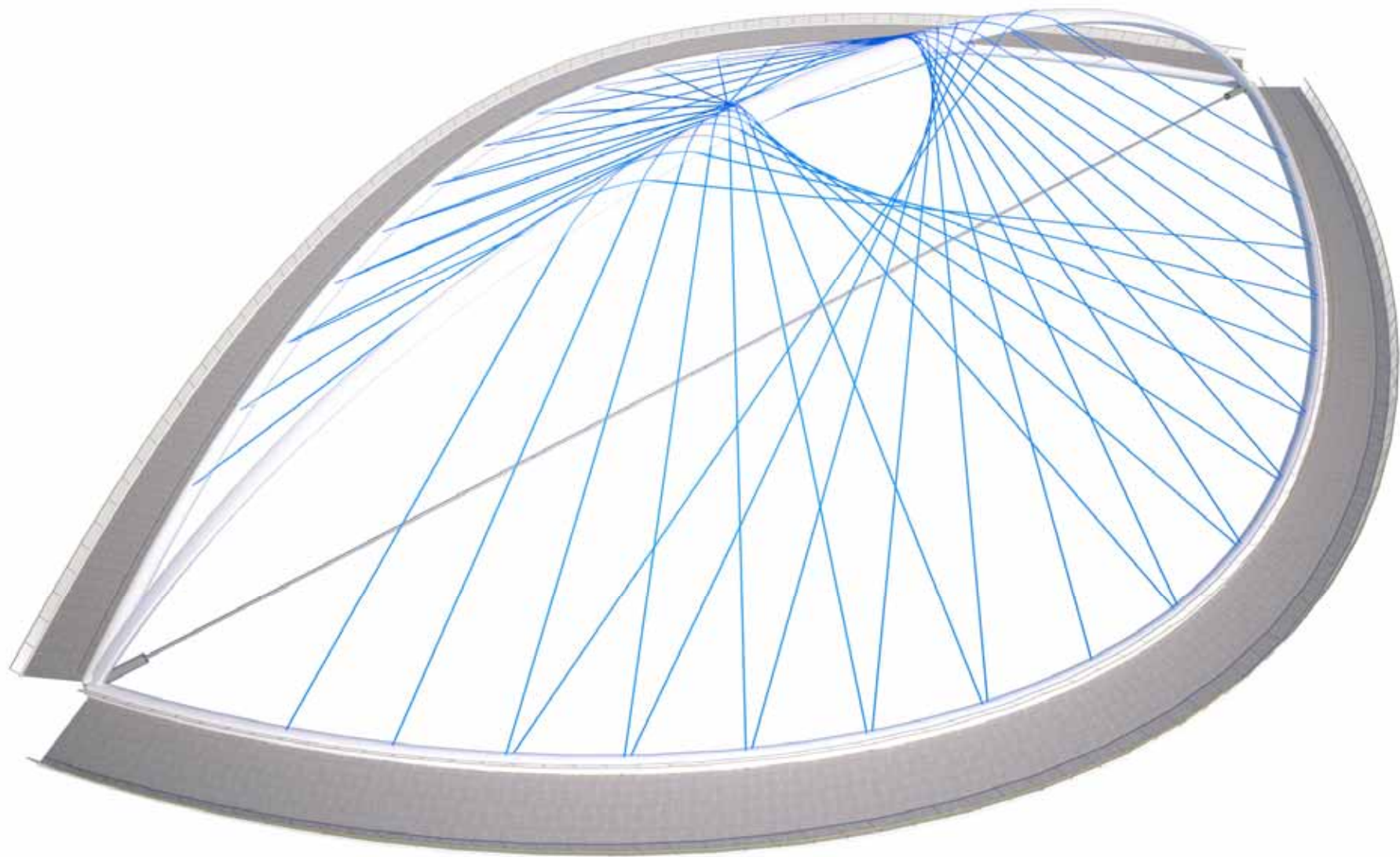
Flower Plaza  
 Glendale Narrows Riverwalk  
 Phase 1b Bridge Landing  
 Glendale, CA  
 Prepared for:  
 City of Glendale  
 15 April 2014

EPTDESIGN



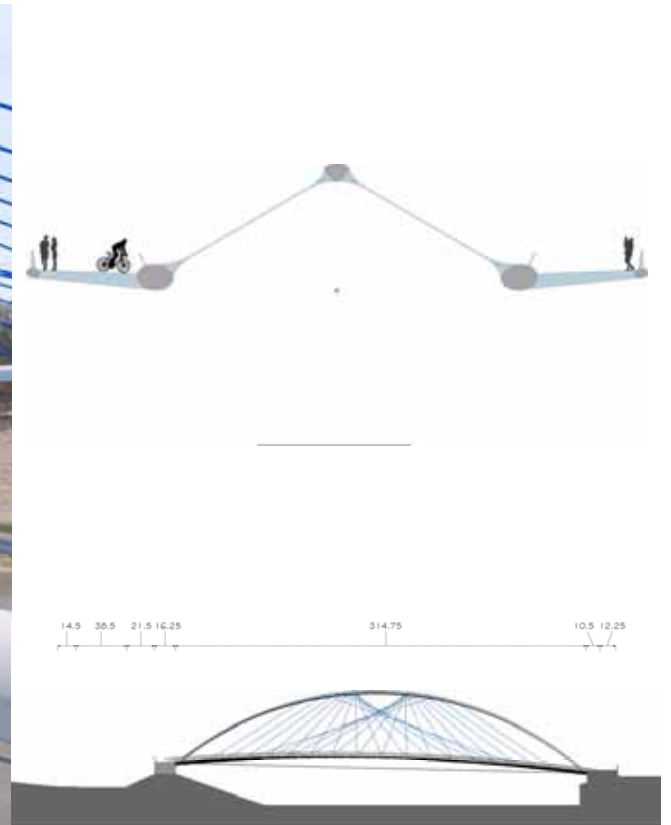
GLENDALE NARROWS RIVERWALK PROJECT - "JEWEL AT THE BEND"

## THE EYE – OPTION A



GLENDALE NARROWS RIVERWALK PROJECT - "JEWEL AT THE BEND"

# THE EYE – OPTION A



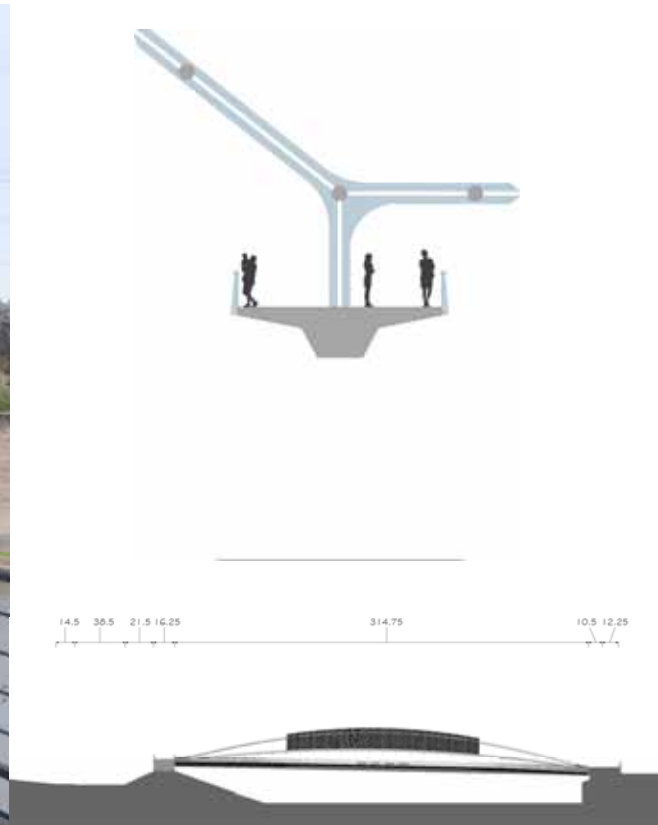
GLENDALE NARROWS RIVERWALK PROJECT - "JEWEL AT THE BEND"

## SOLAR ARCH – OPTION B



GLENDALE NARROWS RIVERWALK PROJECT - "JEWEL AT THE BEND"

# SOLAR ARCH – OPTION B



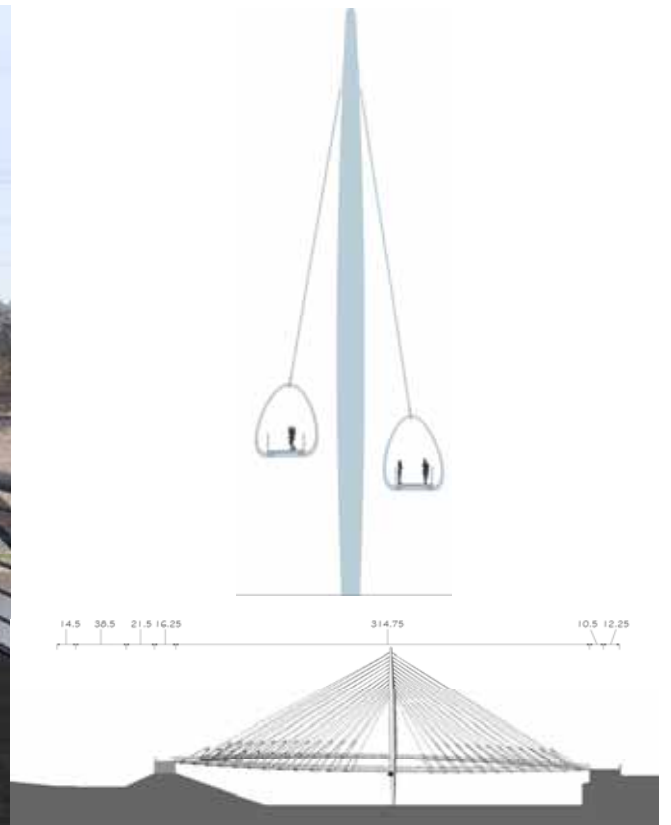
GLENDALE NARROWS RIVERWALK PROJECT - "JEWEL AT THE BEND"

## THE CROSSOVER – OPTION C



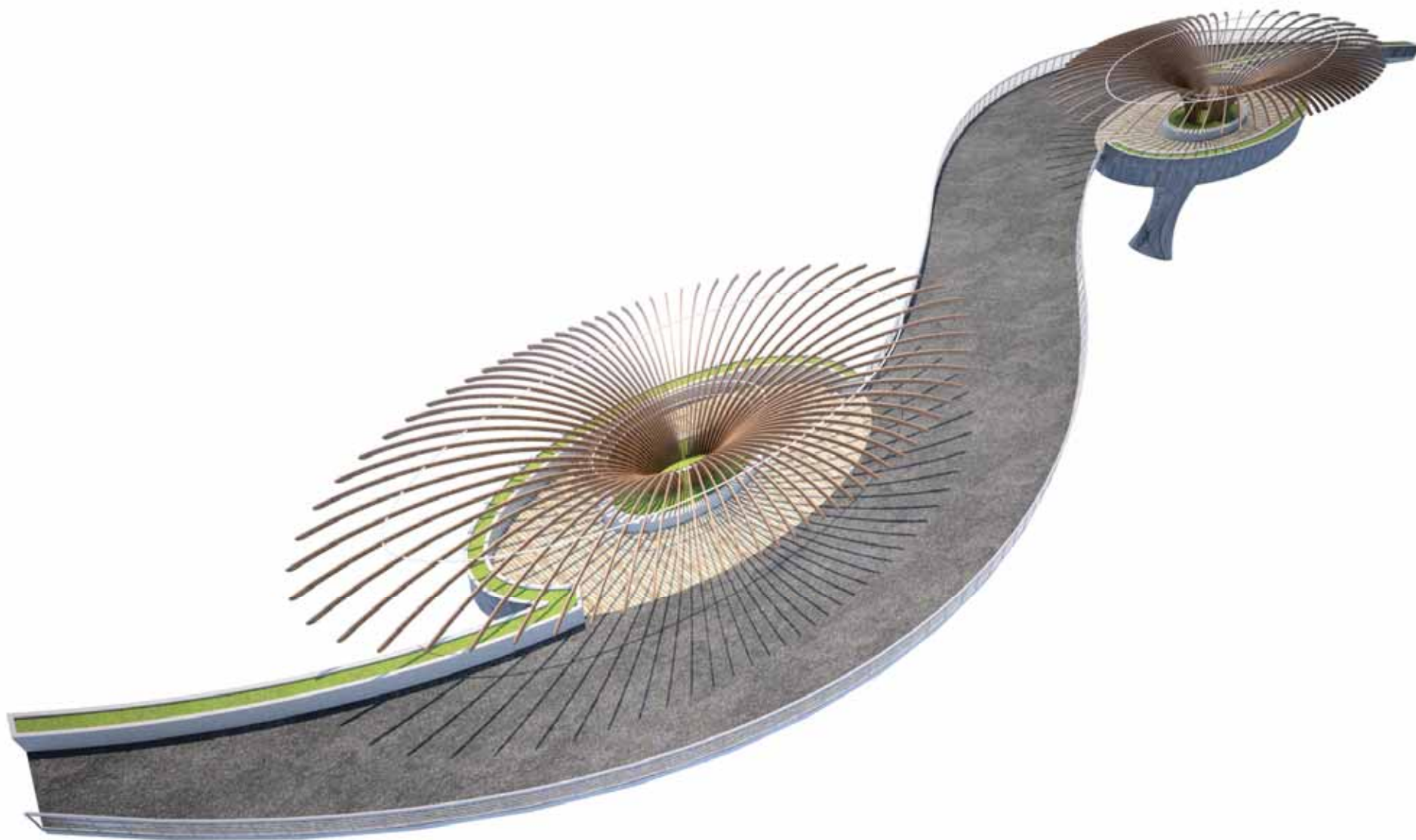
GLENDALE NARROWS RIVERWALK PROJECT - "JEWEL AT THE BEND"

# THE CROSSOVER – OPTION C



GLENDALE NARROWS RIVERWALK PROJECT - "JEWEL AT THE BEND"

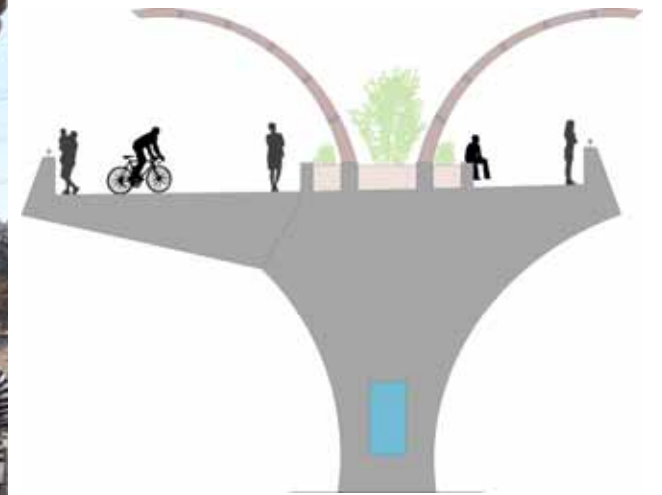
# THE GARDEN – OPTION D



GLENDALE NARROWS RIVERWALK PROJECT - "JEWEL AT THE BEND"



# THE GARDEN – OPTION D



14.5 30.5 21.5 14.25 314.75 10.5 12.25



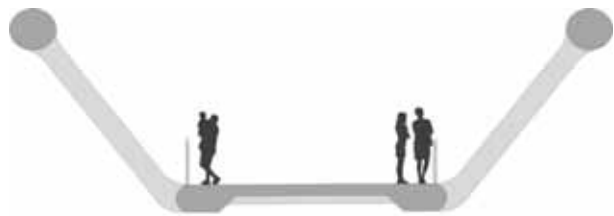
GLENDALE NARROWS RIVERWALK PROJECT - "JEWEL AT THE BEND"

## CONCRETE TRUSS – OPTION E



GLENDALE NARROWS RIVERWALK PROJECT - "JEWEL AT THE BEND"

# CONCRETE TRUSS – OPTION E



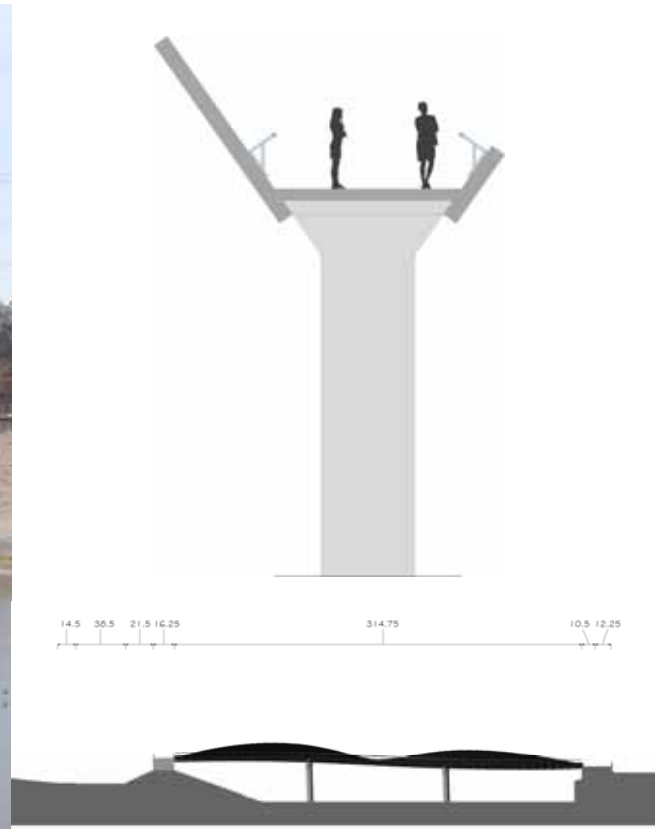
GLENDALE NARROWS RIVERWALK PROJECT - "JEWEL AT THE BEND"

## S CURVE BEAM – OPTION F



GLENDALE NARROWS RIVERWALK PROJECT - "JEWEL AT THE BEND"

# S CURVE BEAM – OPTION F



GLENDALE NARROWS RIVERWALK PROJECT - "JEWEL AT THE BEND"

# ASYMMETRICAL BEAM - – OPTION G



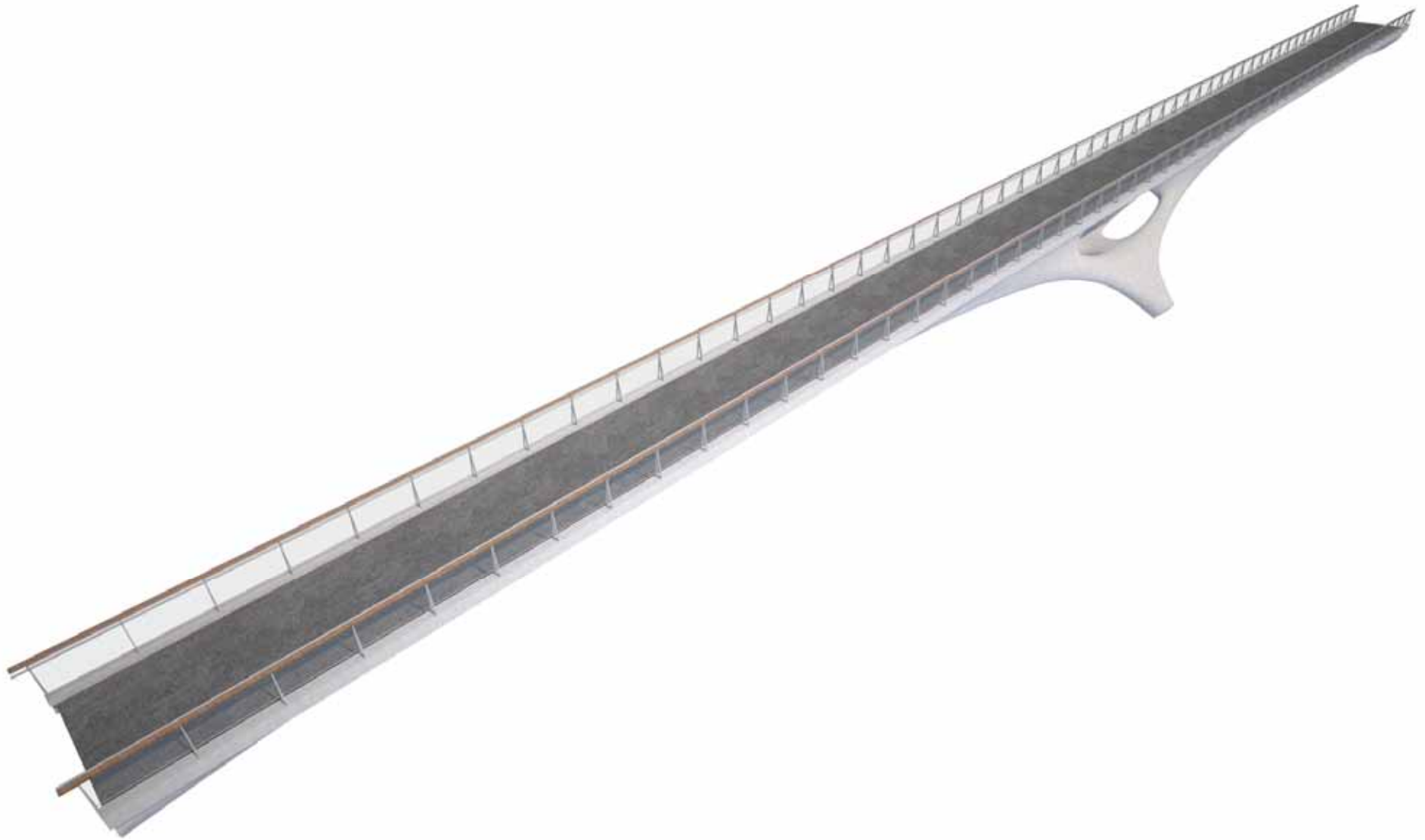
GLENDALE NARROWS RIVERWALK PROJECT - "JEWEL AT THE BEND"

# ASYMMETRICAL BEAM – OPTION G



GLENDALE NARROWS RIVERWALK PROJECT - "JEWEL AT THE BEND"

# MESH HAUNCH – OPTION H



GLENDALE NARROWS RIVERWALK PROJECT - "JEWEL AT THE BEND"



# MESH HAUNCH – OPTION H



GLENDALE NARROWS RIVERWALK PROJECT - "JEWEL AT THE BEND"

# PRECEDENT



GLENDALE NARROWS RIVERWALK PROJECT - "JEWEL AT THE BEND"

# PRECEDENT



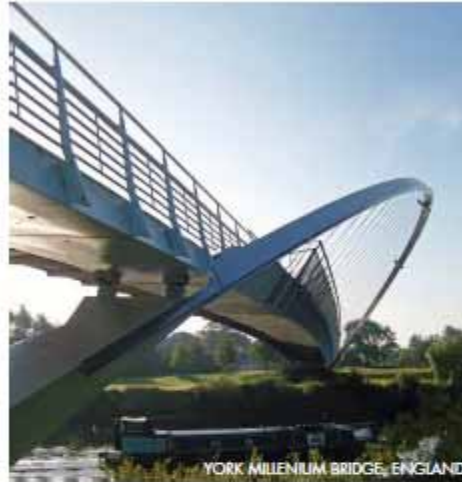
GLENDALE NARROWS RIVERWALK PROJECT - "JEWEL AT THE BEND"

# PRECEDENT



GLENDALE NARROWS RIVERWALK PROJECT - "JEWEL AT THE BEND"

# PRECEDENT



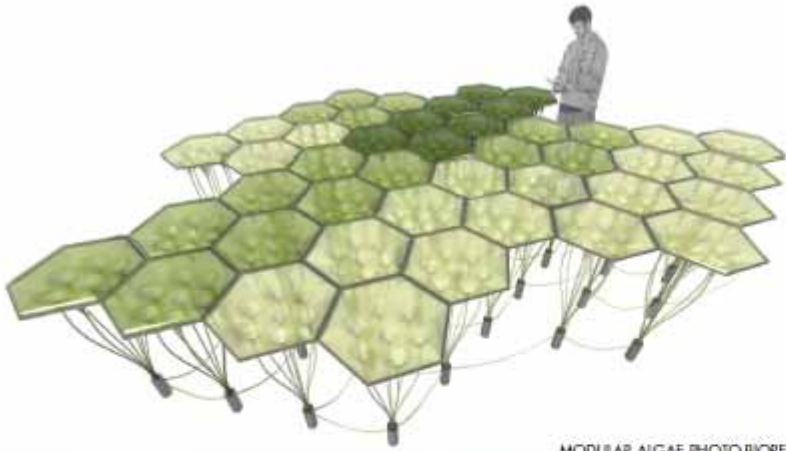
GLENDALE NARROWS RIVERWALK PROJECT - "JEWEL AT THE BEND"

# PRECEDENT



GLENDALE NARROWS RIVERWALK PROJECT - "JEWEL AT THE BEND"

# PRECEDENT



MODULAR ALGAE PHOTO-BIOREACTOR



ALGAE BIOREACTOR TOWER



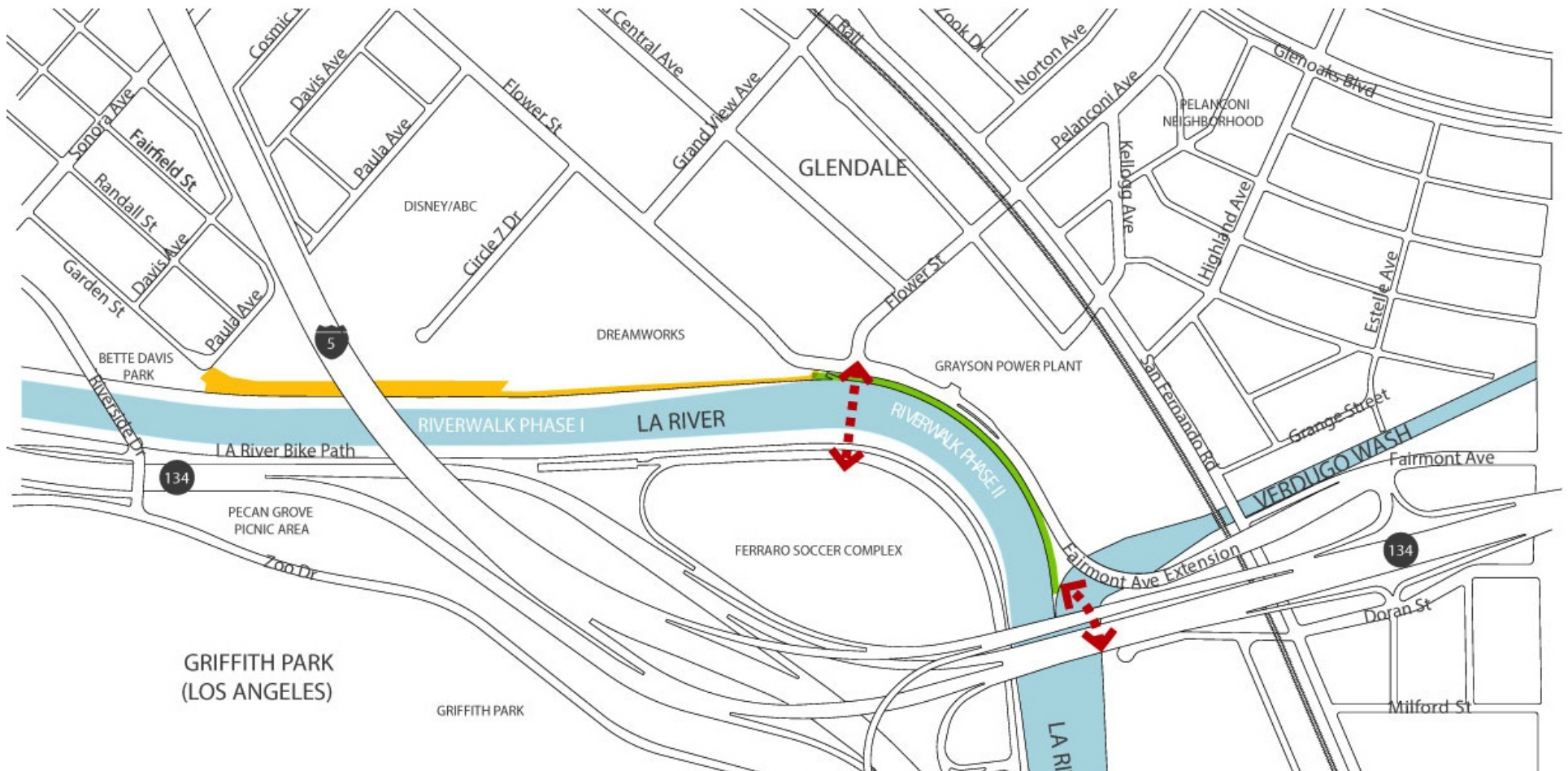
CELLULAR SOLAR TOWER, ITALY



ROOF TOP WIND TURBINE, OMAN

GLENDALE NARROWS RIVERWALK PROJECT - "JEWEL AT THE BEND"

# WORKSHOP #2



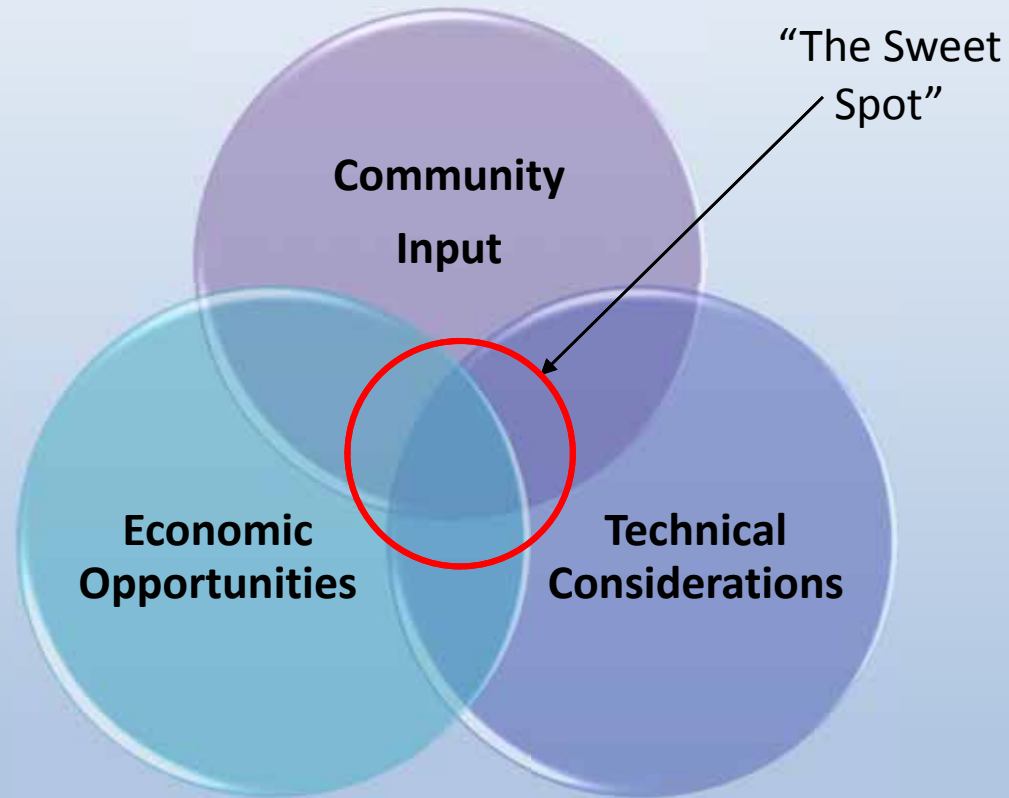
## Bridge development for Workshop #3

Green/Blue/Red - Exercise

GLENDALE NARROWS RIVERWALK PROJECT - "JEWEL AT THE BEND"



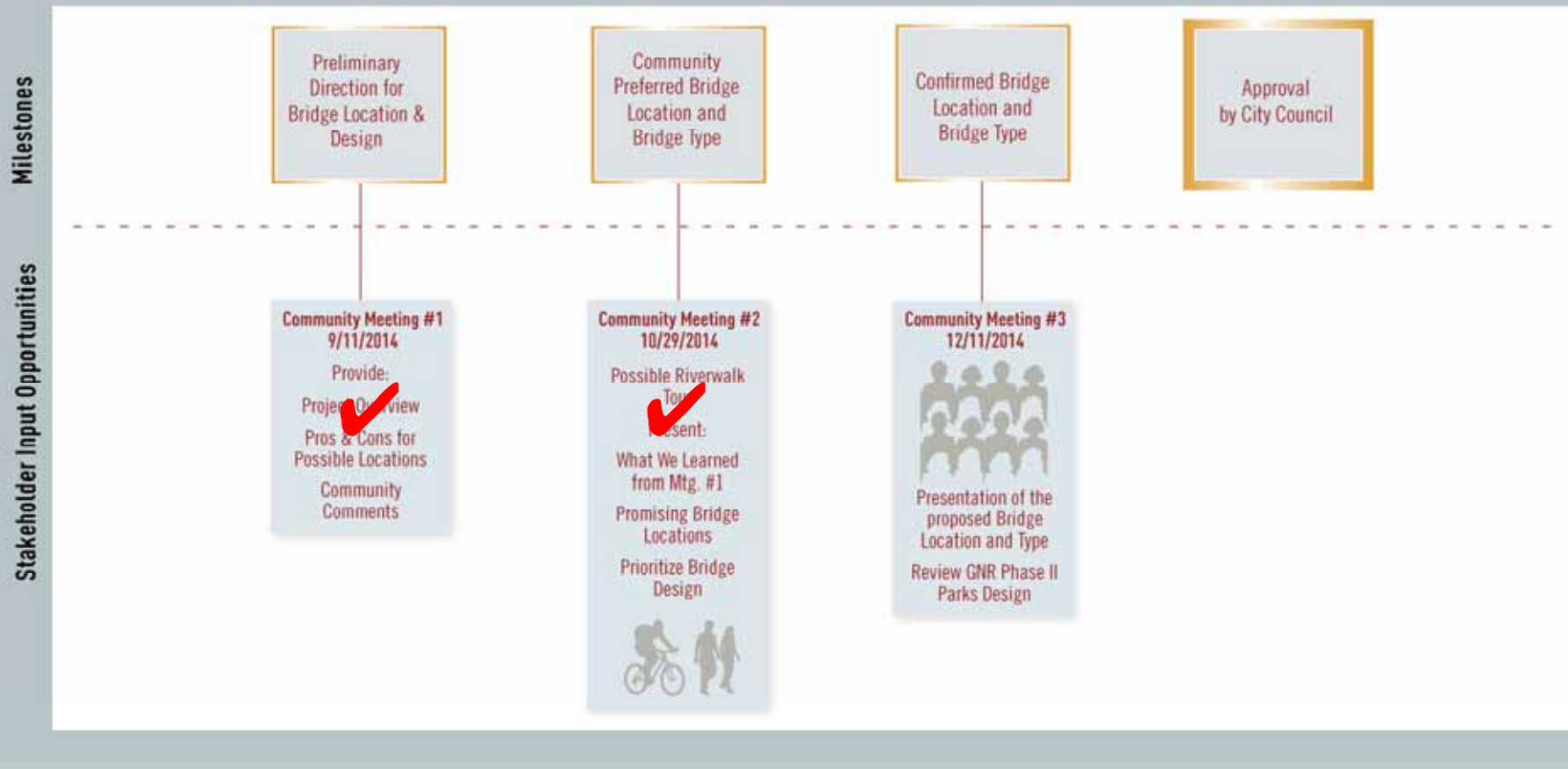
# KEY FACTORS INFLUENCING PROJECT DECISIONS



# NEXT STEPS

## Glendale Riverwalk Phases II and III A Joint Community/City Partnership

### The Public Participation Process:



- **Community Meeting #3**

Thursday, December 11, 2014

6:30 – 8 pm

Pacific Community Center Gymnasium

501 S. Pacific Avenue, Glendale, CA 91204

- **Contact**

Peter Vierheilig, R.L.A.

City of Glendale

Public Works Engineering

at (818) 937-8263, or [pvierheilig@glendaleca.gov](mailto:pvierheilig@glendaleca.gov)



**CITY OF GLENDALE**

Public Works

*Roubik Golanian*

*Peter Vierheilig*

*Kevin Carter*

Community Services & Parks

*Jess Duran*

*Marc Stirdivant*

**DESIGN TEAM**

Atkins – PM/Engineering

John Merkler AIA

TY Lin – Bridge Design

Joe Tognoli/Michael Fitzpatrick/Hunter

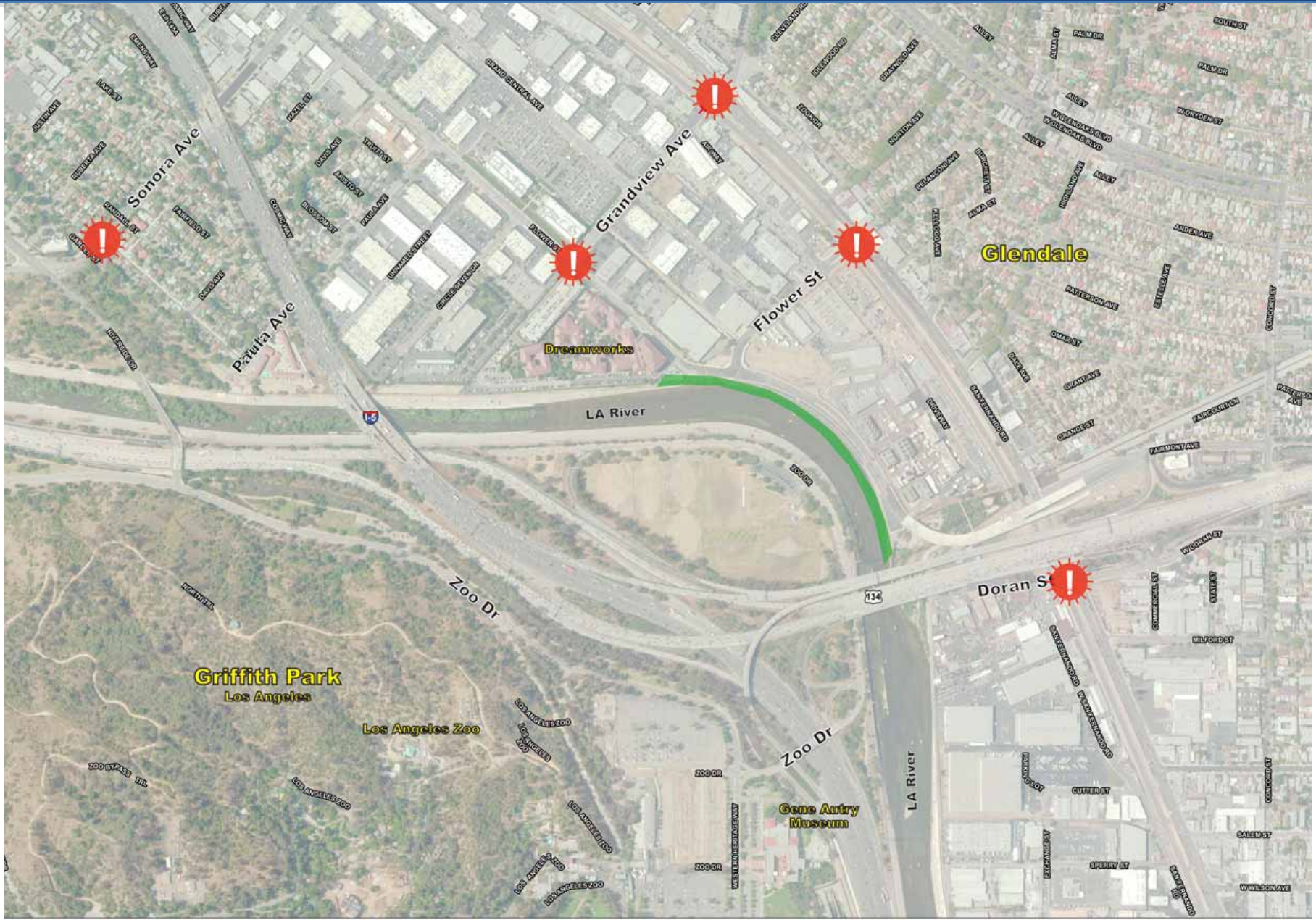
Ruthrauff



Katherine Padilla Associates – Outreach

Katherine Padilla

**THANK  
YOU!**

# ACCESS



 Riverwalk Phase II  Proposed Gateway

## GLENDALE NARROWS RIVERWALK PROJECT - "JEWEL AT THE BEND"

# GATEWAYS



 Riverwalk Phase II     Proposed Access Point