

Verdugo Fire Communications Center

Fiscal Year 2006-7 Annual Report



VERDUGO FIRE COMMUNICATIONS CENTER



EXECUTIVE COMMITTEE

Tracy Pansini, Fire Chief, Burbank
Christopher Gray, Fire Chief, Glendale
Dennis Downs, Fire Chief, Pasadena

TASK-FORCE REPRESENTATIVES

Ray Krakowski, Assistant Chief, Burbank
Harold Scoggins, Deputy Chief, Glendale
Marty Johnson, Battalion Chief, Pasadena
Lenia Scanlon, Sr. Administrative Analyst
Don Wise, Administrative Shift Supervisor
Jason Pfau, Sr. IT Applications Specialist
Tom Phelps, Battalion Chief, Alhambra

Tony Trabbie, Deputy Chief, Arcadia
David Dennis, Battalion Chief, Monrovia
Randy Harper, Battalion Chief, Monterey Park
Richard Garstang, Battalion Chief, San Gabriel
Jim Anderson, Division Chief, San Marino
Steve Heydorff, Battalion Chief, Sierra Madre
On-Duty Battalion Chief, South Pasadena

Copyright © 2007 by Verdugo Fire Communications Center. All rights reserved.

Published in the United States of America by:

Verdugo Fire Communications Center

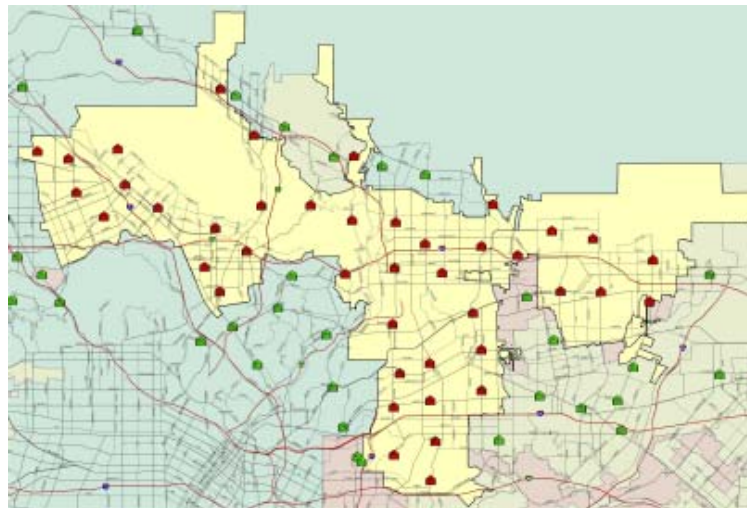
421 Oak Street
Glendale, CA 91204-1298
Telephone: (818) 548-3330
Fax: (818) 240-5895
<http://www.verdugofire.org>

Review and Editorial Input: Harold Scoggins and Michael Matlock

Design, Layout and Statistical Analysis: Lenia Scanlon
Data Entry: Christina Kazazian

Cover photos by Jerry Jacobs and Kenji Luster

Contents



Introduction

History.	3
Benefits of Regional Dispatch.	3
Verdugo Functional Organization Chart.	4
Emergency Communications.	5
Language Translation Services.	5
Fire Department Resources.	6
FY2006-7 Verdugo Fire Communications Fund.	6
FY2006-7 Accomplishments / FY2007-8 Goals	7

Verdugo System

Incidents by Type Code.	8
Verdugo Incident Volume.	9
Total Incidents Per Agency.	10
Out of Jurisdiction Responses.	10
Verdugo Fire and Medical Incidents: 15 Fiscal Years	11
Number of Incidents Dispatched by the Verdugo System Per Fiscal Year.	11
FY2006-7 Strike Team Responses	12
Multiple Alarm Fires	13
Response Time Analysis.	14
Verdugo Call Volume.	15
Verdugo Incoming 911 Calls and Incidents Per Hour.	15
Call Handling Times.	16
Simultaneous Phone Calls.	16
Top Ten Incident Types.	16

Verdugo Agencies

Alhambra Fire Department	17
Arcadia Fire Department.	19
Burbank Fire Department.	22
Glendale Fire Department.	25
Monrovia Fire Department	28
Monterey Park Fire Department	31
Pasadena Fire Department.	33
San Gabriel Fire Department	36
San Marino Fire Department	38
Sierra Madre Fire Department	40
South Pasadena Fire Department	42
Appendix A - Incident Type Codes - Alphabetical	44
Appendix B - Incident Type Codes - By Category	45

Verdugo Annual Report FY2006-7

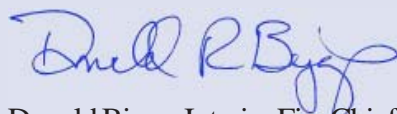
I am pleased to present the FY2006-7 Annual Report for Verdugo Fire Communications Center. It has been a year of many milestones, including dispatching our millionth incident last February.

Our technology continued to evolve this year, with the addition of mapping in the dispatch center and installation of GPS hardware in over 160 front line and reserve fire apparatus in preparation for the upcoming automatic vehicle location (AVL) system. Dispatchers are now able to visualize on a map the locations of incoming calls and all active incidents, and soon, individual unit locations will also appear on the map when AVL is installed. A system for daily sign-up for strike teams was created and placed on the Unified Response web site (www.unified-response.org) to facilitate identification of each day's lineup of Strike Team Leaders, Trainees, and engines.

Incident volume has increased by 24% in the past five years, in part due to the addition of Monterey Park and Alhambra in 2005 and 2006. Although staffing of the Center has not increased during this time, service levels have continued to be exemplary, with over 99% of incoming calls being answered within 10 seconds. Out of nearly 118,000 incoming calls, only two calls in the entire fiscal year waited over a minute to be answered, and neither was a 9-1-1 call. We've said it before and we'll say it again: Verdugo dispatchers are the best in the business!

In closing, I would like to express my admiration for the Unified Response system, where 11 Fire Chiefs collaborate diligently to provide the best possible fire and rescue service to their cities by sharing resources as needed to get the job done quickly and effectively. This automatic aid system was recently formalized by signed agreement, following two years of provisional operation. Credit for this ingenious system is shared by Chris Gray, previous Glendale Fire Chief and Area C Coordinator, and the Fire Chiefs and City Managers of all 11 Area C cities.

Sincerely,



Donald Biggs, Interim Fire Chief
Glendale Fire Department



INTRODUCTION

History

Verdugo Fire Communications Center was established August 1, 1979, when the founding cities of Burbank, Glendale, and Pasadena were faced with limited local resources, voluntary mutual aid with an average 45-minute delay, unfamiliarity with neighboring cities' geography, nonstandard fire-fighting tactics, incompatible equipment, and a lack of common radio frequencies.

The name Verdugo was chosen because the Verdugo mountain range spanned the three cities. Glendale was chosen for the Center's site due to its central location. The Center is overseen by the Glendale Fire Department.



The benefits of a regional dispatch center were recognized immediately. In its first year of operation, Verdugo dispatched over 19,000 incidents. The agreement among the three cities included a "no borders" clause – the closest fire engine responded to calls regardless of jurisdiction.

There were 23 fire stations in the borderless system, and up to 15 fire engines could be dispatched to a major incident without delay. Specialized equipment was shared among the three cities, including an Air Utility Vehicle, two Hazardous Materials Units, and three Urban Search and Rescue Units.

In 1996, the cities of South Pasadena and San Marino contracted for dispatching services, which added two more fire stations to the system and an increase of approximately 2,500 incidents per year. Eight more fire stations were added in 1999 when the cities of Monrovia, Arcadia, and Sierra Madre joined the Verdugo System, and in 2000 when San Gabriel was added. Seven additional stations were added when Monterey Park and Alhambra joined the System in February 2005 and April 2006, respectively.

<u>City</u>	<u>Population*</u>	<u>Property Assessment**</u>	<u>Area (sq.mi.)</u>	<u>Joined Verdugo System</u>
Alhambra	89,488	\$5,584,279,077	7.62	4-13-06
Arcadia	56,556	\$8,308,174,551	12	10-21-99
Burbank	107,921	\$13,275,111,353	17.15	5-20-81
Glendale	207,157	\$19,125,287,713	30.59	8-1-79
Monrovia	39,309	\$3,269,014,353	13.73	7-1-99
Monterey Park	64,508	\$4,461,684,253	7.7	2-1-05
Pasadena	147,262	\$16,626,007,715	23	9-4-79
San Gabriel	42,691	\$3,040,642,655	4.1	4-7-00
San Marino	13,507	\$3,503,788,360	3.75	4-17-96
Sierra Madre	11,039	\$1,360,517,402	3	10-21-99
South Pasadena	25,824	\$2,726,308,667	3.44	4-17-96
Total	805,262	\$81,280,816,099	126.08	

*State of California, Department of Finance, *E-1 City/County Population Estimates, with Annual Percent Change, January 1, 2006 and 2007*. Sacramento, California, May 2007.

**City of Los Angeles Tax Payers' Guide, 2006-2007, Taxable Net, pp.136-156.

Benefits of Regional Dispatch

Since its first year of operation, Verdugo has dispatched over 1,020,000 incidents. The Verdugo regional dispatching system has been very successful, providing the highest level of service to the citizens of its 11 cities and saving taxpayer dollars. The benefits of 11 fire agencies combining resources into this single, regional communication center include:

- Costs of personnel and computer, phone, dispatch and radio communication systems are shared between multiple agencies, lowering each agency's share and eliminating unnecessary and costly redundancy;

- Dispatchers who specialize in fire and rescue and are able to provide Emergency Medical Dispatch instructions to callers prior to the arrival of paramedics;
- Centralized coordination of “unified responses” within the Area C automatic aid system;
- Fast access to OES Region I resources;
- Common radio frequencies permit relatively seamless operations on major incidents, increased safety on fireground and faster initial responses;
- Redundancy of critical radio, telephone, and computer-aided dispatch (CAD) systems prevents unnecessary interruptions in service;
- Fire stations are alerted automatically through CAD, which provides a hard-copy printout and displays dispatch information on mobile computer terminals (MCT’s);
- Status changes and movements are recorded using MCT’s, reducing radio channel congestion;
- Notifications to key personnel are automatically triggered by alarm level or incident type through CAD, or manually by the dispatchers;
- Detailed incident history information is recorded through CAD;
- The “ReddiNet” hospital status system displays local hospital emergency department status for EMS incidents;
- Monthly Task Force meetings are held where Chief Officers share in decision making and keep their colleagues in the other Area C agencies updated and informed;
- In-depth statistical analysis of fire and rescue incidents using data captured by the CAD system.



Verdugo Functional Organization Chart



Communications Experience

The 14 Verdugo Fire Communications employees with dispatch responsibilities have a combined total of 163 years' experience at the Verdugo Center and 239 total years of fire or police communications experience.

Emergency Communications

Dialing 9-1-1 in any of the cities served by Verdugo Fire Communications Center will connect the caller to either the local police department or to California Highway Patrol dispatchers. Fire, rescue and medical calls are immediately transferred to Verdugo dispatchers. When the emergency call is received at Verdugo, an operator enters the pertinent details into the computer and these are immediately transmitted via both voice radio and mobile computer terminal to the closest fire and/or paramedic equipment available. Emergency personnel are on the road within a minute or two of receiving the radio call and remain in constant radio contact with the Communications Center as additional details are received. Under most circumstances, emergency response equipment and personnel begin to arrive at the scene of the incident within 4-5 minutes of being dispatched.

Dispatching for 11 Southern California cities can pose numerous challenges. Many residents speak a limited amount of English and have difficulty conveying the details of their emergency until a translator is called to assist. Verdugo dispatchers must be familiar with streets and freeways in a densely populated, highly diverse geographic area covering over 126 square miles. In addition, callers are often in a state of agitation or anxiety due to their emergency situation and it can require patience and ingenuity to extract the necessary information.

Verdugo dispatchers are highly trained and experienced individuals who process hundreds of incoming calls daily and strive to dispatch appropriate resources promptly and accurately. All are trained in Emergency Medical Dispatch procedures and frequently instruct callers on delivery of First Aid or CPR until emergency medical personnel arrive. This vital link in the emergency response chain can even help to save lives during the few minutes it takes for firefighters and paramedics to arrive at an incident.



Language Translation Services

When a call is received for fire or paramedic services and the caller is unable to convey the necessary information in English, the dispatcher will ask what language the caller prefers. The majority of foreign-language callers have sufficient grasp of English to tell the dispatcher what language they speak. The call is immediately transferred to an interpreter, and the dispatcher takes down all pertinent information as he/she directs the interpreter in questioning the caller.

Over the phone translation of foreign language calls is currently provided by NetworkOmni Multilingual Communications, which offers translation in over 150 languages. Translation services were utilized for 697 calls between July 1, 2006 and June 30, 2007, representing about 1.1% of all incidents. Sixteen different languages were requested by Verdugo System callers:

Language	Total Calls	Minutes	Av. Call Length	% of Translated Calls	Fraction of Total Incidents
Spanish	329	896.75	2.73	46.16%	1 in every 189 incidents
Armenian	173	703.13	4.06	25.21%	1 in every 360 incidents
Chinese Mandarin	94	289.03	3.07	13.29%	1 in every 662 incidents
Chinese Cantonese	57	149.12	2.62	8.49%	1 in every 1,092 incidents
Vietnamese	14	39.28	2.81	2.19%	1 in every 4,448 incidents
Farsi	7	16.63	2.38	0.96%	1 in every 8,895 incidents
Arabic	6	15.98	2.66	0.82%	1 in every 10,378 incidents
Korean	4	17.50	4.38	0.68%	1 in every 15,566 incidents
Russian	4	9.97	2.49	0.55%	1 in every 15,566 incidents
Japanese	2	8.40	4.20	0.27%	1 in every 31,133 incidents
French	2	5.10	2.55	0.27%	2 in every 31,133 incidents
Italian	1	1.12	1.12	0.27%	1 in every 62,265 incidents
German	1	3.38	3.38	0.14%	1 in every 62,265 incidents
Serbian	1	2.73	2.73	0.14%	1 in every 62,265 incidents
Romanian	1	2.00	2.00	0.14%	1 in every 62,265 incidents
Cambodian Khmer	1	1.00	1.00	0.14%	1 in every 62,265 incidents
TOTALS	697	2,161.13	3.10		

As of June 30, 2007 there were a total of 40 fire stations, 40 engine companies, 11 truck companies, 23 rescue ambulances, 1 paramedic squad, 3 air utilities, 11 command vehicles, 2 hazmat vehicles, 5 USARs and 5 water tenders within the Verdugo System. Arcadia and Monrovia share a USAR, as do Monterey Park and San Gabriel; these are indicated by 0.5 each.

	<u>ALH</u>	<u>ARC</u>	<u>BRK</u>	<u>GLN</u>	<u>MPK</u>	<u>MRV</u>	<u>PAS</u>	<u>SGB</u>	<u>SMD</u>	<u>SNM</u>	<u>SPS</u>
Fire Stations	4	3	6	9	3	2	8	2	1	1	1
Engine Companies	4	3	6	9	3	2	8	2	1	1	1
Truck Companies	1	1	2	3	1	1	2	0	0	0	0
Rescue Ambulances	2	2	3	5	2	PM Squad	5	1	1	1	1
<u>Additional Units:</u>											
Air Utility	0	1	0	1	0	0	0	0	0	0	1
Command	1	1	1	1	1	1	1	1	1	1	1
Hazmat	0	0	1	1	0	0	0	0	0	0	0
USAR	1	0.5	0	1	0.5	0.5	1	0.5	0	0	0
Water Tender	0	0	1	2	0	1	0	0	1	0	0

Verdugo Fire Communications Fund is operated as a Special Revenue Fund by the Glendale Fire Department in the City of Glendale. Expenditures exceeded revenues by \$141,245 during the fiscal year, primarily due to capital outlays associated with the CAD system upgrade and repayment of a loan for the voice radio system. Verdugo's reserve funds are earmarked for the remainder of the CAD system upgrade, the upcoming cutover to the ICIS radio system, upgrading the rear screen projection system, a new uninterruptible power supply, and various other systems.

	Burbank	Glendale	Pasadena	TOTAL-Tri Cities	Contract Cities	TOTAL - ALL
REVENUE						
Charges for Service	\$402,700	\$673,653	\$522,450	\$1,598,803	\$899,894	\$ 2,498,697
Equipment Replacement	64,641	64,641	64,641	193,923	-	\$ 193,923
Subtotal						\$ 2,692,620
Interest & Misc. Revenue						\$ 109,664
TOTAL						\$ 2,802,284
EXPENDITURES						
Salaries						\$ 1,937,805
Maint. & Operations						\$ 362,850
Capital Outlay						\$ 642,873
TOTAL						\$ 2,943,529
Revenue minus expenditures						\$ (141,245)
<i>Contract Cities include Alhambra, Arcadia, Monrovia, Monterey Park, San Gabriel, San Marino, Sierra Madre and South Pasadena</i>						

FY2006-7 Accomplishments

- A total of 150,956 phone calls were processed by Verdugo dispatchers, including 62,265 incidents that were dispatched to the 11 cities in the Verdugo System and mutual aid responses to jurisdictions outside Verdugo boundaries. This represents a 3.8% increase in calls and a 6.9% increase in total incidents over the previous fiscal year. Ring-time statistics indicated that 99.3% of 9-1-1 calls were answered in 10 seconds or less.
- The Unified Response automatic aid system was formalized by signed agreement.
- Programming, testing and implementation of 25 custom enhancements to the CAD system were completed, including a triage function that is more fully integrated with CAD, further automating the emergency medical dispatch process and supplying important additional detail on incident history reports related to the call-taking process. Another enhancement included a new graphic user interface (GUI) for the CAD display.
- The second phase of the CAD upgrade was implemented, mapping in the dispatch environment. When a 911 call comes in to Verdugo, its location (based on landline phone location or geographic coordinates of the cellphone) now appears on the map. When a call type is assigned, the icon changes to a relevant symbol. When units are dispatched to the incident, the incident number and unit designations are added to the map display with colors indicating each unit's status: dispatched, enroute, onscene, etc.
- Phase Three of the CAD upgrade was begun. GPS hardware was installed in all frontline and reserve apparatus in the 11 cities. Initial planning and testing of the mobile mapping and automatic vehicle location (AVL) systems in the fire apparatus began.
- A new automated feature was added to the Unified Response web site (www.unified-response.org) that enables Operations Battalion Chiefs from the 11 Area C cities to log on each morning and notify Verdugo of their strike team status for the day.
- Acquired furniture and computers for three new dispatch workstations, bringing the total from six to nine seats. Call-taking functionality was also added to two of the three new workstations.
- Two recently retired dispatchers were re-hired on a part-time, as-needed basis to provide coverage.
- Two Fire Communications Supervisors and four dispatchers received basic ROSS (Resource Ordering and

Supply System) training.

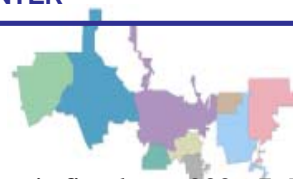
- Three radio control PC's were replaced and software was upgraded to the Windows XP operating system. Programming included new modules on the primary screen for FDUMA, LARTCS, and RED1 Direct.
- Preparations continued for transition to ICIS, Inter-agency Communications Interoperability System, for all 11 fire departments.

FY2007-8 Goals

- Continue providing prompt, efficient and professional handling of all calls for fire and paramedic assistance and supply emergency pre-arrival instructions to callers as needed until help arrives. Answer at least 99% of 9-1-1 calls in 10 seconds or less.
- Upgrade the rear screen projection system to offer a variety of display options related to combinations of map displays, CAD status screens, video input, etc. Optimize the display for viewing the locations of incoming 9-1-1 calls, fire response units equipped with GPS devices, and emergency incident events across the display screens.
- Implement TeleStaff scheduling software to automate some of Verdugo's staffing procedures.
- Provide ROSS training to the remaining members of the dispatch staff.
- Update and revise the Verdugo policy and procedures manual to reflect current methods of operation.
- Update Verdugo's emergency preparedness plan, including establishing a backup dispatch facility and plans for continuity of operations in the event of a disaster. Develop remote CAD and radio capabilities to be used in the event of center evacuation.
- Maintain staffing at NFPA 1221 guidelines and ISO standards.
- Review and implement recommendations from TechKnowledge.
- Implement a new Emergency Medical Dispatch training and quality assurance program.
- Identify a method to automatically provide current ReddiNet hospital status information to units in the field.



VERDUGO SYSTEM



There were 62,265 incidents dispatched by Verdugo Fire Communications in fiscal year 2006-7. The dispatcher determines and enters the most appropriate and descriptive type code for each incident into the Computer Assisted Dispatch (CAD) system. Each type code falls within a category: Fire, Medical, Service, or Other. The table below shows how many incidents were entered into the CAD system for each type code in these categories during FY2006-7, along with the percent of incidents in that category for the year. Of the 142 Type Codes listed below, the three most frequent incident types were Fire Alarm (58.5% of Fire incidents), Shortness of Breath (11.0% of Medical incidents), and Fall - Minor (10.5% of Medical incidents).

FIRE

INCIDENT TYPE	# INCIDENTS	% OF FIRE CALLS
Apartment House Fire	145	1.5%
Appliance Fire - Major	145	1.5%
Appliance Fire - Minor	12	<1.0%
Brush Fire	46	<1.0%
Brush Strike team-XLC-1201A	2	<1.0%
Brush Strike Team-XLC-1202A	2	<1.0%
Brush Strike Team-XLC-1203A	3	<1.0%
Brush Strike Team-XLC-1204A	4	<1.0%
Brush Strike Team-XLC-1205A	4	<1.0%
Carbon Monoxide Alarm	80	<1.0%
Electrical Fire	137	1.4%
Electrical Vault Fire	14	<1.0%
Emergency Landing at Airport	31	<1.0%
Explosives/BombThreat/Scare	27	<1.0%
Fire Alarm	5,725	58.5%
Fire Alarm - Full Assignment	88	<1.0%
Fire Alarm Reset	126	1.3%
Fire Now Out	173	1.8%
Garage Fire	39	<1.0%
House Fire	233	2.4%
Illegal Burning	183	1.9%
Misc Outside Fire	155	1.6%
Misc Outside Fire on the Fwy	22	<1.0%
Mutual Aid Request	15	<1.0%
OES Engine Strike Team	2	<1.0%
Person on Fire	1	<1.0%
Plane Accident, Down or Fire	1	<1.0%
Plane Accident, Down or Fire	2	<1.0%
Refuse Fire	243	2.5%
Smoke in a Structure	319	3.3%
Smoke in the Area	332	3.4%
Sprinkler System Activated	23	<1.0%
Structure Fire	349	3.6%
Transformer/Street Light Fire	141	1.4%
Unknown Type Fire	66	<1.0%
Vegetation Fire	166	1.7%
Vegetation Fire on the Fwy	68	<1.0%
Vehicle Fire	374	3.8%
Vehicle Fire in a Structure	23	<1.0%
Vehicle Fire on the Freeway	264	2.7%

MEDICAL

Abdominal Pain	1,492	3.1%
Allergic Reaction	218	<1.0%
Altered Level of Consciousness	1,243	2.6%
Animal/Human/Stings	119	<1.0%
Assault Victim	929	1.9%
Assist the Invalid	761	1.6%
Back Pain	628	1.3%
Building Collapse Rescue	1	<1.0%
Burn Injury	40	<1.0%
Chest Pains - Heart Attack	3,594	7.5%
Collapse/Extrication/Rescue	3	<1.0%
Confined Space Rescue	2	<1.0%
CVA-Neurologic	857	1.8%
Diabetic Problem	822	1.7%
Drowning/Diving Incident	4	<1.0%

MEDICAL (cont.)

INCIDENT TYPE	# INCIDENTS	% OF MEDICAL CALLS
Electrical Shock Injury	13	<1.0%
Emer Medical Svc on the Fwy	134	<1.0%
EMS Call - No Details	341	<1.0%
Explosion Seen or Heard	3	<1.0%
Exposure - Heat or Cold	12	<1.0%
Eye Injury	36	<1.0%
Fall - Major	144	<1.0%
Fall - Minor	5,029	10.5%
G.I. Bleed	474	1.0%
Gunshot Wound	69	<1.0%
Head Pain	268	<1.0%
Heart Problem	941	2.0%
Ingestion-Poisoning-Inhalation	498	1.0%
Injury TC with Fuel Spill	15	<1.0%
Investigate the Welfare	45	<1.0%
Medical Alarm	338	<1.0%
Minor Trauma	1,787	3.7%
Misc Full Assignment & RA	1	<1.0%
Misc Medical	3,307	6.9%
Misc Response Engine & RA	7	<1.0%
Misc Response for 1 RA	5	<1.0%
Mountain Rescue	26	<1.0%
Non-Injury Traffic Collision	44	<1.0%
Nosebleed Non-Traumatic	220	<1.0%
Obstetrics/Gynecological	274	<1.0%
Overdose	483	1.0%
Person Choking	196	<1.0%
Person Dizzy	1,008	2.1%
Person Down	1,354	2.8%
Person Hanging	16	<1.0%
Person in Seizure	2,009	4.2%
Person Not Breathing	891	1.9%
Person Sick	1,086	2.3%
Person Stabbed	87	<1.0%
Person Threatening to Jump	7	<1.0%
Person Unconscious/Unresponsive	2,812	5.9%
Psychiatric	569	1.2%
Rescue	38	<1.0%
Severe Trauma	24	<1.0%
Shortness of Breath	5,264	11.0%
Swift Water Rescue	1	<1.0%
Syncope/Fainted Now Conscious	977	2.0%
TC-Rescue on the Freeway	268	<1.0%
Traffic Collision	3,264	6.8%
Traffic Collision - Rescue	252	<1.0%
Traffic Collision on the Fwy	1,025	2.1%
Traffic Collision w/ Pedestrian	705	1.5%
Traffic Collision w/ Train	2	<1.0%
Trench Rescue	2	<1.0%
Unknown Medical	602	1.3%
Vehicle Into a Structure	75	<1.0%

SERVICE

INCIDENT TYPE	# INCIDENTS	% OF SERVICE CALLS
Abandoned Refrigerator	32	<1.0%
Animal Rescue/Assist	59	1.7%
Arcing Wires	52	1.5%
Bee Investigation	44	1.3%
Biohazard Investigation	85	2.4%
Broken Gas Main	59	1.7%
Broken Water Main	76	2.2%
Chemical Outside	175	5.0%
Damage Investigation	21	<1.0%
Elevator Rescue	332	9.5%
Flowing/Gushing/Sheared Hydrant	87	2.5%
Fuel Spill	179	5.1%
Hazardous Materials Response	32	<1.0%
Investigate a Hazardous Condition	346	9.9%
Investigate a Mudslide	2	<1.0%
Investigate Overcrowding	27	<1.0%
Major Flooded Condition	160	4.6%
Malfunction	105	3.0%
Minor Flooding	236	6.7%
Misc Odor Investigation	208	5.9%
Misc Response for 1 Engine	55	1.6%
Misc Response for a Truck	18	<1.0%
Misc Response Full Assignment	8	<1.0%
Odor of Natural Gas Inside	156	4.5%
Odor of Natural Gas Outside	137	3.9%
One Story Roof Check	30	<1.0%
PD Assist/Stand-By	60	1.7%
Person Locked In/Locked Out	263	7.5%
Public Assist	184	5.3%
Roof Check 2 Stories & Above	37	1.1%
Wires Down	232	6.6%

OTHER

INCIDENT TYPE	# INCIDENTS
CAD Station Alert Testing	462
Fire Alarm Testing	1
Fireworks Violation	25
Special Event	27
Transfer to Police Dept	3

Verdugo Incident Volume

“Incidents” Versus “Responses”

A single **incident** might involve multiple **responses** from one or more fire departments. For example, when a house fire in Burbank is reported to Verdugo, the initial dispatch might include three fire engines, two fire trucks, a rescue ambulance and a Battalion Chief – a total of seven responding vehicles or “responses.” If additional personnel and equipment are needed, additional engines, trucks, ambulances and other equipment like air utilities and water tenders might be dispatched – sometimes from a neighboring jurisdiction to avoid depleting resources at fire stations near the incident. Each unit dispatched counts as one response, hence a single incident might involve a dozen or more responses, some of which might be providing automatic or mutual aid from another jurisdiction.

Total Incidents Per City

The following table shows how many incidents of each category occurred in each city, regardless of which fire department(s) responded.

	<u>ALH</u>	<u>ARC</u>	<u>BRK</u>	<u>GLN</u>	<u>MRV</u>	<u>MPK</u>	<u>PAS</u>	<u>SGB</u>	<u>SNM</u>	<u>SMD</u>	<u>SPS</u>
FIRE	599	798	1,554	1,649	523	400	2,939	317	217	110	275
MEDICAL	3,721	3,127	7,146	12,522	2,480	2,722	11,623	1,582	540	553	1,072
SERVICE	333	240	529	718	218	188	744	120	80	95	168
OTHER	3	6	13	17	3	1	39	1	1	2	1
TOTAL	4,656	4,171	9,242	14,906	3,224	3,311	15,345	2,020	838	760	1,516

Total Responses Per Fire Department

Although fire departments generally have numerous types of response vehicles including hazmat, air utility, water tender and so forth, the vast majority of responses are by fire engines, rescue ambulances and fire trucks. The totals below include all responses by these types of apparatus, regardless of whether the incident occurred within the agency’s home jurisdiction or was part of an automatic or mutual aid response.

	<u>ALH</u>	<u>ARC</u>	<u>BRK</u>	<u>GLN</u>	<u>MRV</u>	<u>MPK</u>	<u>PAS</u>	<u>SGB</u>	<u>SNM</u>	<u>SMD</u>	<u>SPS</u>
Engine	5,275	4,594	10,250	16,423	3,670	3,874	16,777	2,282	998	245	1,584
Ambulance	4,012	3,433	7,780	13,949	1,692	3,075	12,777	1,547	1,037	754	1,122
Truck	708	663	1,303	2,064	488	484	2,146	–	–	–	–
Resp. Total	9,995	8,690	19,333	32,436	5,850	7,433	31,700	3,829	2,035	999	2,706

**Ambulance totals include Paramedic Squad responses*

Total Out of Jurisdiction Incidents Per Fire Department

For those incidents requiring additional equipment and personnel, fire departments negotiate automatic or mutual aid agreements with neighboring agencies. There are currently several dozen such agreements within the Verdugo System. The following table shows the number of incidents where a fire department provided automatic or mutual aid to other jurisdictions, either to a neighboring city within the Verdugo System (**IVS**) or to a jurisdiction outside the Verdugo System (**OVS**) such as Los Angeles City, Los Angeles County, or Montebello.

	<u>ALH</u>	<u>ARC</u>	<u>BRK</u>	<u>GLN</u>	<u>MRV</u>	<u>MPK</u>	<u>PAS</u>	<u>SGB</u>	<u>SNM</u>	<u>SMD</u>	<u>SPS</u>
IVS	585	438	335	497	353	361	452	255	589	11	272
OVS	11	61	141	415	49	207	141	46	102	13	8
TOTAL	596	499	476	912	402	568	593	301	691	24	280

VERDUGO INCIDENTS BY MONTH AND CATEGORY

CATEGORY	Jul.	Aug.	Sep.	Oct	Nov	Dec	Jan	Feb	Mar	Apr	May	June	TOTAL	PERCENT
FIRE	971	794	820	803	860	934	946	717	756	727	747	729	9,804	15.7%
MEDICAL	4,047	3798	3,745	3,898	3,862	4,178	4,327	3,796	4,125	3,999	4,009	3,864	47,648	76.5%
SERVICE	352	263	266	276	257	291	367	213	328	315	261	260	3,449	5.5%
OTHER	30	9	7	4	6	7	66	2	5	6	5	3	150	0.2%
OVS*	104	81	110	107	96	124	95	85	93	97	129	93	1,214	1.9%
TOTAL	5,504	4,945	4,948	5,088	5,081	5,534	5,801	4,813	5,307	5,144	5,151	4,949	62,265	

OVS = Responses Outside the Verdugo System

Total Incidents Per Agency

Verdugo Fire Communications has contracted to provide fire and rescue dispatch services for eight cities: Alhambra, Arcadia, Monrovia, Monterey Park, San Gabriel, San Marino, Sierra Madre and South Pasadena. Calculation of annual fees for each of these fire departments includes incidents that occurred within each agency's home city plus responses that occurred as a direct result of the fire department's automatic or mutual aid agreements with agencies outside the Verdugo System (OVS). Contract cities are not billed for responses to cities within the Verdugo System.

	ALH	ARC	BRK	GLN	MRV	MPK	PAS	SGB	SNM	SMD	SPS
INC. TOTAL	4,656	4,171	9,242	14,906	3,224	3,311	15,345	2,020	838	760	1,516
OVS*	11	61	141	415	49	207	141	46	102	13	8
TOTAL	4,667	4,232	9,383	15,321	3,273	3,518	15,486	2,066	940	773	1,524

OVS = Responses Outside the Verdugo System

Out of Jurisdiction Responses

The following table shows the number of incidents where agencies responded outside their home jurisdiction. When necessary, several agencies may respond to a single large incident.

Responding Agencies	City Where Incident Occurred														
FY 06-07	ALH	ARC	BRK	GLN	MRV	MPK	PAS	SGB	SNM	SMD	SPS	LAC	LFD	XBB	Subtotals
ALH		6	1	2	2	233	25	190	32	0	94	5	4	2	596
ARC	7		1	1	270	13	94	27	19	4	2	54	1	6	499
BRK	0	1		296	2	3	31	0	1	1	0	20	117	4	476
GLN	4	1	356		3	2	125	3	0	1	2	78	330	7	912
MRV	0	334	1	1		1	12	2	0	2	0	43	1	5	402
MPK	267	1	1	1	0		5	81	1	0	4	97	2	108	568
PAS	49	100	24	57	28	27		21	57	4	85	84	55	2	593
SGB	157	9	0	0	2	46	6		33	0	2	44	1	1	301
SNM	15	9	0	0	4	1	271	187		0	102	100	1	1	691
SMD	0	0	0	0	0	0	10	0	1		0	6	0	7	24
SPS	34	3	1	1	2	5	153	11	61	1		1	7	0	280
LAC	3	68	1	47	55	71	37	38	28	4	0		1	1	354
LFD	0	1	17	31	0	0	8	0	0	0	14	0		1	72
XAA	7	105	133	26	2,523	71	12	2	1	0	2	7	3		2,892
Subtotals	543	638	536	463	2,891	473	789	562	234	17	307	539	523	145	8,660

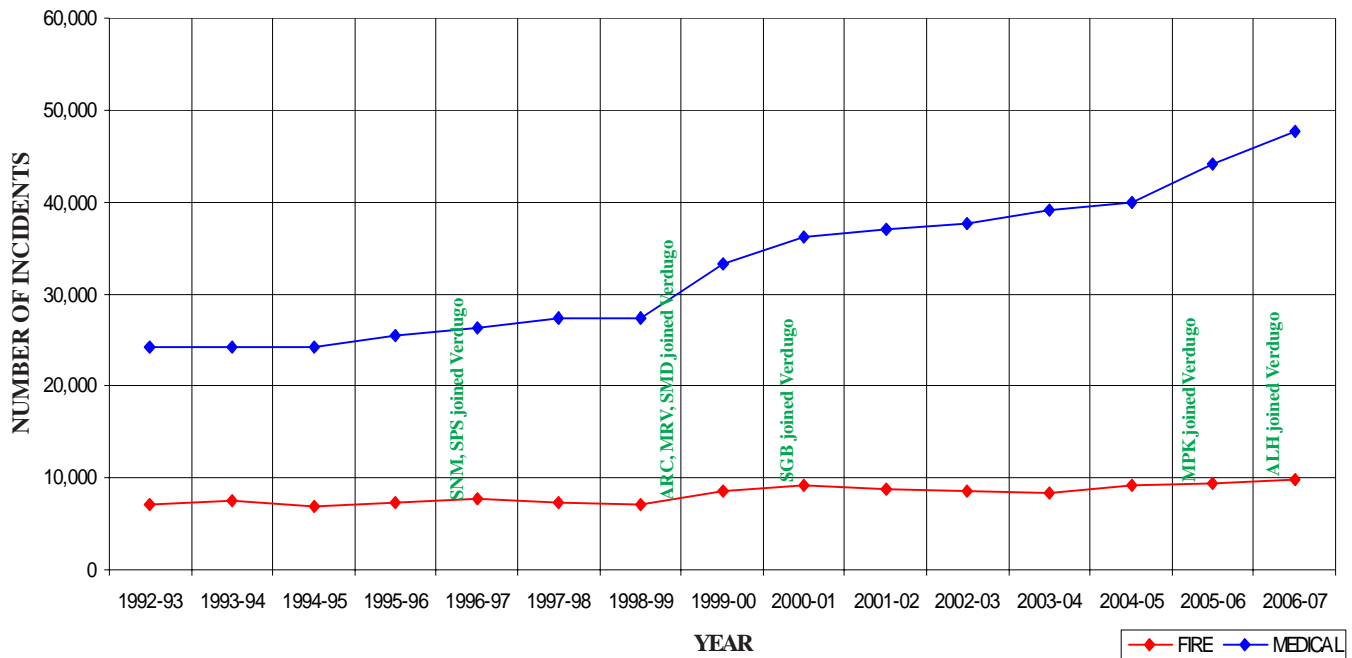
ABBREVIATIONS:

ALH=Alhambra; ARC=Arcadia; BRK=Burbank; GLN=Glendale; LAC=LA County; LFD=LA City; MRV=Monrovia; MPK=Monterey Park; PAS=Pasadena; SGB=San Gabriel; SMD=Sierra Madre; SNM=San Marino; SPS=South Pasadena; XAA=Usually private ambulance but also may refer to helicopters, private company fire engines, or airport crash-related units; also includes Montebello units responding into Verdugo cities. The high number of responses into Monrovia is due to the use of private ambulances for EMS incidents; a Fire Department Squad and Engine are also dispatched in most instances. XBB=Locations outside the Verdugo System, not including LAC, LFD.

Verdugo Fire and Medical Incidents

Until April 1996, the Verdugo System consisted only of Burbank, Glendale and Pasadena. Two additional cities were added in 1996, three more in 1999 and one each in 2000, 2005, and 2006 for a total of 11 Verdugo cities.

In the 11 years since Verdugo began adding contract cities, the total Verdugo incident volume has increased about 65%, due primarily to serving a larger population base and geographic area but also to annual increases in the populations of individual cities served. As the chart and table below demonstrate, the majority of this increase has occurred in Medical incidents. It is also noteworthy that the number of “Outside Verdugo System” responses has more than doubled in this period of time.



Number of Incidents Dispatched by the Verdugo System Per Fiscal Year

	<u>1992-93</u>	<u>1993-94</u>	<u>1994-95</u>	<u>1995-96</u>	<u>1996-97</u>	<u>1997-98</u>	<u>1998-99</u>	<u>1999-00</u>
FIRE	7,133	7,496	6,942	7,361	7,791	7,245	7,205	8,655
MEDICAL	24,287	24,258	24,176	25,514	26,429	27,362	27,331	33,299
SERVICE	2,349	2,765	2,451	2,384	2,793	2,596	2,597	3,242
OTHER	57	124	323	178	85	58	111	152
OVS*	14	38	317	346	528	491	522	552
TOTAL	33,840	34,681	34,209	35,783	37,626	37,752	37,766	45,900

	<u>2000-01</u>	<u>2001-02</u>	<u>2002-03</u>	<u>2003-04</u>	<u>2004-05</u>	<u>2005-06</u>	<u>2006-07</u>
FIRE	9,129	8,770	8,635	8,381	9,208	9,361	9,804
MEDICAL	36,239	37,035	37,622	39,077	40,019	44,028	47,648
SERVICE	3,434	3,387	3,348	2,802	3,809	3,277	3,449
OTHER	112	245	270	171	98	609	150
OVS*	592	644	779	729	835	988	1,214
TOTAL	49,506	50,081	50,654	51,160	53,969	58,263	62,265

OVS = Responses Outside the Verdugo System to jurisdictions such as Montebello, LA City, and LA County.

FY2006-7 Strike Team Responses

In the dry climate of Southern California, “fire season” may be considered year-round; wildfires can occur throughout the year. Fire departments must remain in a constant state of readiness to protect not only the people and property within their own jurisdiction but also to assist other fire agencies when a major incident occurs.

Area C of OES Region I includes all 11 of the Verdugo System cities. During FY2006-7, Verdugo dispatched 31 strike team responses to 11 major fires in the southland, but all 40 fire stations in the area remained fully staffed and functioning, covering the home front. The personnel who remained at home to protect the 11 Area C jurisdictions made certain the service expectations of the public were met or exceeded and ensured the departments’ local efforts did not skip a beat.



Photo by Jerry Jacobs

Strike Team	Incident Name	Dispatch Date & Time		Leader	Trainee	Release Date & Time	
1800-A	Sawtooth	7/12/2006	17:06	MTB BC Lynsky	MTB - Cpt. Middlebrooks	7/16/2006	19:12
WT11	Edgemont	7/15/2006	0:58	GLN Eng. Griffith	GLN - FF. Detro	7/20/2006	13:33
1800-A	Prado Mobilization	7/24/2006	5:59	ARC BC105 - Norwood	GLN BC Arrellanes	7/28/2006	21:52
1205-A	Cross	8/28/2006	14:20	ARC BC105 - Norwood	MRV BC Fabrizio	8/28/2006	23:57
1203-A	Cross	8/28/2006	14:22	PAS BC3 - Gordon	PAS BC Imler	8/28/2006	22:59
1204-A	Day	9/11/2006	16:40	MPK BC6 - Khail	MRV BC Fabrizio	9/12/2006	0:40
1201-A	Day	9/16/2006	21:30	BRK BC1 - Lenehan	BRK - Capt Howe	9/18/2006	12:28
1205-A	Day	9/16/2006	21:35	MRV BC10 - Dennis	MRV BC Haberle	9/18/2006	13:17
WT16	Day	9/17/2006	11:39	BRK - Eng. Lanning	BRK - FF. Mercado	9/29/2006	8:31
WT11	Day	9/17/2006	11:39	GLN - Eng. Ortiz	GLN - FF. Detro	9/29/2006	21:20
WT41	Day	9/17/2006	11:39	SMD - Eng. Bartlett	SMD - Eng. Wamboldt	9/29/2006	18:54
1800-A	Day	9/17/2006	13:58	MTB BC Lynsky	MTB - Capt. Valentine	9/17/2006	20:24
1800-A	Day	9/21/2006	14:11	MRV BC10 - Dennis	MRV BC Fabrizio	9/25/2006	16:11
1202-A	Day	9/26/2006	16:52	GLN BC2 - Scoggins	BRK - Cpt. Robertson	9/28/2006	20:02
1204-A	Day	9/26/2006	16:55	ALH BC7 - Stedman	PAS-BC Blades	9/28/2006	21:58
1203-A	Esperanza	10/27/2006	0:30	PAS BC3 - Costa	PAS BC -Blades	10/29/2006	15:20
1800-A	Esperanza	10/27/2006	3:00	SMD CH4 - Lowe	SGB BC5 - Terry	10/29/2006	11:29
1205-A	Esperanza	10/27/2006	3:00	MPK BC6 - Khail	BRK - Cpt. Robertson	10/29/2006	15:56
WT11	Esperanza	10/27/2006	18:11	GLN - Eng. Bostick	GLN - FF. Boyle	10/31/2006	14:43
1800-A	Shekell	12/3/2006	12:01	SMD CH4 - Lowe	SMD - BC4 Bamberger	12/5/2006	10:03
1201-A	Shekell	12/3/2006	12:11	BRK BC1 - Trowbridge	PAS BC3 Blades	12/5/2006	15:37
1204-A	Shekell	12/3/2006	12:33	MPK BC6 - Khail	SGB- Capt Frieders	12/5/2006	15:37
WT16	Shekell	12/4/2006	14:28	BRK - Dennis Kenehan	BRK - Robert Hills	12/6/2006	14:54
WT101	Shekell	12/4/2006	14:28	MRV - Capt. John Rooks	MRV - Steve Mikity	12/6/2006	14:54
1202-A	241 Fire	3/11/2007	11:52	GLN BC2 - Arellanes	PAS BC3 - Imler	3/12/2007	11:40
1800-A	241 Fire	3/11/2007	11:58	ARC BC105 - Haney	N/A	3/11/2007	22:26
1205-A	241 Fire	3/11/2007	12:03	MRV BC10 Fabrizio	N/A	3/11/2007	21:00
1203-A	Sunset	4/12/2007	14:12	PAS BC3 - Johnson	N/A	4/12/2007	20:27
1204-A	Griffith Park	5/7/2007	20:04	SGB BC5 - Beckman	SGB Capt Roy	5/9/2007	13:58
WT11	Island	5/11/2007	15:41	GLN - FF. Detro	GLN - FF. Dawson	5/14/2007	23:19
WT101	Island	5/11/2007	15:41	MRV Capt. Ryan Phillips	MRV Eng. Rob Vita	5/14/2007	23:15

Multiple-Alarm Fires

In the fire service, an alarm level represents a single complement of apparatus and personnel. For example, if a first-alarm incident calls for 3 engines, 1 truck, 1 ambulance, and a Battalion Chief, a second alarm will have a total of 6 engines, 2 trucks, 2 ambulances, and 2 Battalion Chiefs. Any additional units from the second alarm that will not be needed are cancelled promptly, often before they have left the station. Unusually large fires sometimes require a third or fourth alarm, but these are rare.

Normally, the first unit arriving at a fire will dictate a “size-up” of the incident over the radio, such as, “Smoke showing from rear of two-story apartment building with exterior corridors.” If it becomes apparent that the complement of apparatus and personnel already dispatched will not be sufficient, an additional alarm is requested over the radio and Verdugo immediately dispatches additional units.

During FY2006-7, Verdugo dispatched 26 multiple-alarm fires in Area C cities and one adjacent jurisdiction.

Date	Street Address	City	Type	Alarm Level
7/4/06	2300 Poplar Blvd.	ALH	Structure Fire	3
8/17/06	3211 Keats St.	ALH	House Fire	2
4/12/07	1822 W. Garvey Ave.	ALH	Structure Fire	2
7/17/06	2036 Canyon Rd.	ARC	House Fire	2
9/10/06	661 W. Lemon Ave.	ARC	Garage Fire	2
5/18/07	40 Hacienda Dr.	ARC	House Fire	2
8/16/06	400 S. Victory Blvd.	BRK	Structure Fire	2
12/26/06	4411 W. Magnolia Blvd.	BRK	Smoke Inside Structure	2
2/15/07	2244 Wildwood Canyon Rd.	BRK	Brush Fire	2
3/1/07	2805 Winona Ave.	BRK	House Fire	2
4/30/07	1920 Clark Ave.	BRK	Structure Fire	2
12/20/06	3013 Montrose Ave.	GLN	Structure Fire	3
5/27/07	5021 Lowell Ave.	GLN	Brush Fire	2
5/27/07	4602 Brazil St.	LFD	Structure Fire	2
7/4/06	123 S. Lincoln Ave.	MPK	Structure Fire	3
9/16/06	511 S. Atlantic Blvd.	MPK	Structure Fire	2
2/20/07	1360 Crest Vista Dr.	MPK	House Fire	3
8/12/06	928 El Dorado St.	MRV	House Fire	2
8/30/06	73 N. Vineda Ave.	PAS	Structure Fire	2
8/30/06	531 E. Walnut St.	PAS	Structure Fire	2
9/25/06	1220 Wentworth Ave.	PAS	House Fire	3
7/21/06	301 S. Arroyo Dr., #5	SGB	Apartment Fire	4
8/8/06	807 W. Las Tunas Dr.	SGB	Structure Fire	2
11/20/06	140 W. Valley Blvd.	SGB	Structure Fire	2
9/20/06	2650 Lombardy Rd.	SNM	House Fire	2
1/4/07	1831 Spruce St.	SPS	Garage Fire	2



Response Time Analysis

Statistics are also generated for the time it takes from dispatch to leaving the station (enroute) and from dispatch to the arrival onscene of the first assigned unit. Dispatch to arrival statistics may vary due to a variety of factors such as the city's geographical layout, the time of day or night, traffic density, road conditions, and emergency unit availability. According to NFPA 1710 guidelines, the first responding unit should ideally be onscene within 5 minutes of dispatch at least 90% of the time, if possible. On average, throughout the Verdugo System it takes 1 minute for the first unit to leave the station after dispatch and 4 minutes, 21 seconds after dispatch to arrive at an incident. This includes all types of incidents – Fire, Medical, Service, and Other.

Average Dispatch to Enroute Time (min.)

Agency	All Incidents	Total Incs.	Fire	Fire Incs.	Medical	Medical Incs.
Verdugo	1:00	62,265	1:09	9,804	0:58	47,648
Alhambra	1:02	4,656	1:22	599	0:58	3,721
Arcadia	1:01	4,171	1:09	798	0:58	3,127
Burbank	1:00	9,242	1:05	1,554	0:58	7,146
Glendale	1:02	14,906	1:08	1,649	1:00	12,522
Monrovia	1:04	3,224	1:15	523	1:01	2,480
Monterey Park	1:02	3,311	1:06	400	1:00	2,722
Pasadena	0:57	15,345	1:07	2,939	0:53	11,623
San Gabriel	1:00	2,020	1:16	317	0:57	1,582
San Marino	0:39	838	0:49	217	0:35	540
Sierra Madre	1:36	760	1:32	110	1:37	553
South Pasadena	0:58	1,516	1:14	275	0:52	1,072

Average Dispatch to Arrival Time (min.)

Agency	All Incidents	Total Incs.	Fire	Fire Incs.	Medical	Medical Incs.
Verdugo	4:21	62,265	5:05	9,804	4:10	47,648
Alhambra	4:23	4,656	4:49	599	4:16	3,721
Arcadia	4:13	4,171	5:04	798	3:56	3,127
Burbank	4:34	9,242	5:17	1,554	4:22	7,146
Glendale	4:10	14,906	4:46	1,649	4:04	12,522
Monrovia	4:31	3,224	4:58	523	4:21	2,480
Monterey Park	4:57	3,311	5:28	400	4:49	2,722
Pasadena	4:13	15,345	5:09	2,939	3:58	11,623
San Gabriel	4:21	2,020	4:33	317	4:15	1,582
San Marino	3:54	838	4:30	217	3:34	540
Sierra Madre	4:37	760	4:54	110	4:34	553
South Pasadena	4:07	1,516	4:23	275	3:53	1,072

First Unit Onscene in 5 Minutes or Less

Agency	Fire Incidents	Medical Incidents
Verdugo	56.3%	75.6%
Alhambra	51.8%	73.7%
Arcadia	57.9%	78.9%
Burbank	51.2%	71.6%
Glendale	64.7%	79.7%
Monrovia	54.0%	70.1%
Monterey Park	45.2%	58.3%
Pasadena	53.5%	79.3%
San Gabriel	69.3%	74.6%
San Marino	66.1%	84.4%
Sierra Madre	57.4%	71.6%
South Pasadena	72.5%	79.9%

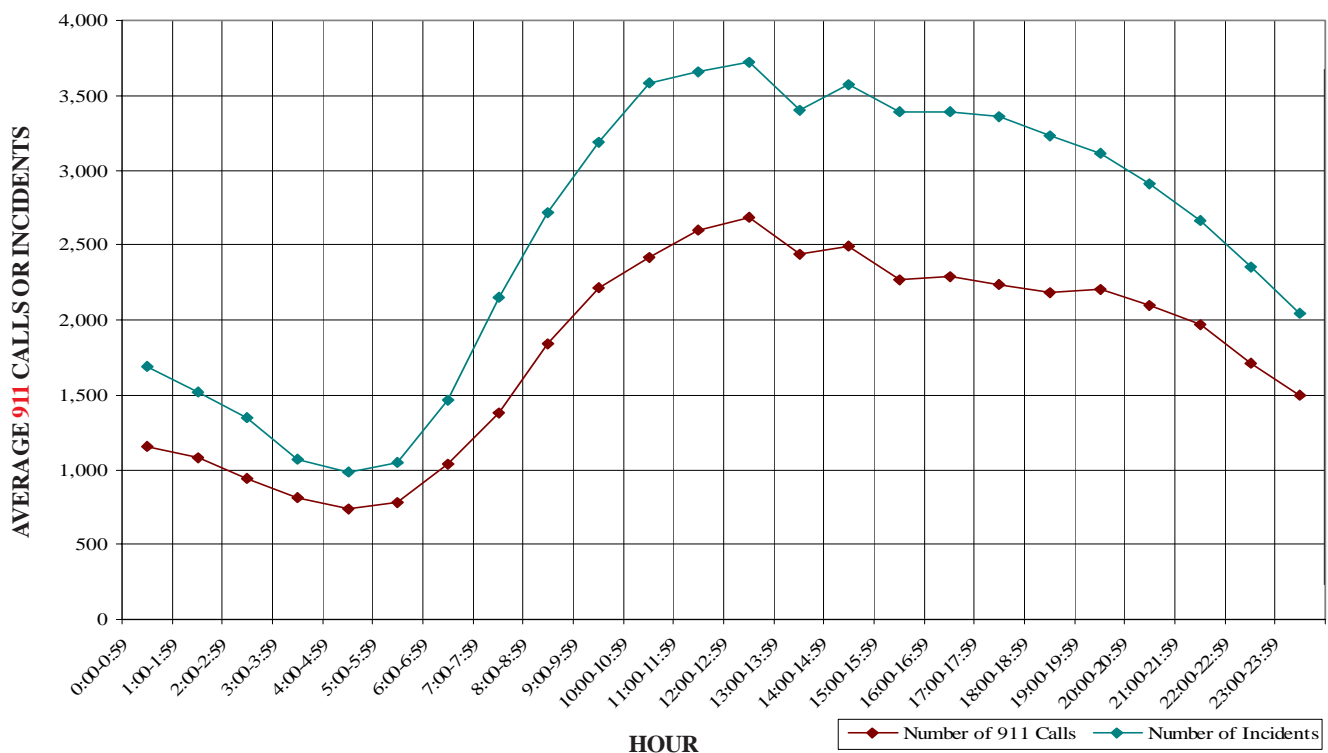
Verdugo Call Volume

Verdugo Fire Communications personnel answer fire and emergency medical 911 calls, dispatch appropriate emergency equipment, and ensure that all elements of the emergency response system are in communication with each other. Verdugo is staffed with two operators and a supervisor during day and night shifts, and an additional operator is on duty during the busiest hours, 8 a.m. to 8 p.m., when two-thirds of Verdugo's incidents occur. The Fire Communications Administrator is present during business hours, along with a Sr. Administrative Analyst and a Sr. IT Applications Specialist.

Over 62,000 incidents are dispatched by Verdugo annually. Numerous additional telephone calls and radio transmissions are handled in association with these incidents and with the everyday operations of the 40 fire stations in the Verdugo System, resulting in telephone and radio traffic that may suddenly become heavier at any hour of the day or night. In fire and medical emergency situations, time is critical. A delay in getting through on the phone can potentially make a difference in the outcome of the emergency. For this reason, numerous statistics related to incoming telephone calls are monitored routinely in emergency communications centers.

- During FY2006-7, Verdugo handled an average of 413 telephone calls per day or 17.2 calls per hour. About 28.5% of these calls were taken on 911 lines, 49.6% came through 7-digit emergency lines or the four administrative lines, and 21.9% were outgoing calls.
- There were about 2.4 calls per incident, an average of 171 incidents per day or 7.1 incidents per hour.
- The highest call volume in a single day, including incoming 911, 7-digit emergency and administrative lines plus outgoing calls, occurred on May 8, 2007, with 722 calls. The second-highest call day was July 22, 2006, at 717 calls. The fewest total calls occurred on April 8, 2007, with only 235.
- The busiest month in terms of call volume was July 2006, with 14,174 total calls, or an average of 457 calls per day.

Verdugo Incoming 911 Calls and Incidents Per Hour



- On average, there are 9.2 incidents per hour between 8 a.m. and 8 p.m. and 4.8 incidents per hour during the night.
- Call answering time: 96.5% of incoming 911 calls were answered in less than 6 seconds, 99.3% were answered in under 11 seconds. In the entire year, there were only 290 calls where the answering time was over 11 seconds. Not a single 911 call took longer than 60 seconds to be answered.
- There were 686 abandoned calls during the year, just under two per day. Only 154 of the abandoned calls (about 13 per month) were on 911 lines and the remainder were on administrative lines. A call is considered abandoned if the caller hangs up after it has begun to ring but before the call is answered. Follow-up is conducted as quickly as possible to contact the caller and determine whether an actual emergency exists.

Call Handling Times

Data for two incident processing functions are used to monitor the speed with which calls are handled: emergency call processing and radio dispatch handling time. All 911 calls are measured from the time the dispatcher answers the telephone until the incident is entered into the Computer Assisted Dispatch (CAD) system and transferred to the radio dispatcher. Dispatched calls are measured from the time the incident is received by the radio dispatcher until the alert is sent to fire stations and apparatus. Call handling times in the Verdugo System tend to average about 50 seconds for 911 call processing and 8-10 seconds for radio dispatching.

Simultaneous Phone Calls

Because time is of the essence, one of the most vital considerations in a communications center is whether the staffing level is sufficient to answer all calls within a reasonable period of time. A study begun in 2002 was continued through FY2006-7 to determine how often the call volume exceeded staffing levels. During a major incident such as a brush fire or a multiple-alarm structure fire, if the three daytime dispatchers or two nighttime dispatchers on phone duty are taking calls simultaneously, any additional calls must be answered and placed on hold or continue ringing. During business hours, an additional person is often available to handle calls on the four business lines, when needed. Additional dispatchers are also called in for major incidents of longer duration, regardless of time of day. The results of the FY2006-7 call volume study indicate that there were 560 daytime instances and 849 nighttime instances when call volume exceeded staffing – all phone dispatchers were on calls and an additional call came in. This analysis includes both emergency calls and incoming administrative calls; when a call comes in on an emergency phone line and all operators are already taking calls, anyone on an administrative call finishes as soon as possible or places their line on hold so they can take the incoming emergency call.

Top Ten Incident Types

The ten most common types of incidents that occurred within the Verdugo System in FY 2006-7 are listed below, along with the percent of all Verdugo incidents. For comparison, the percents of the same incident types for each of the cities in the Verdugo System are also included. Values significantly higher or lower than those in the VFCC column reveal how one city may be different from the others.

INCIDENT TYPE	PERCENT OF ALL INCIDENTS IN CITY											
	<u>VERDUGO</u>	<u>ALH</u>	<u>ARC</u>	<u>BRK</u>	<u>GLN</u>	<u>MPK</u>	<u>MRV</u>	<u>PAS</u>	<u>SGB</u>	<u>SNM</u>	<u>SMD</u>	<u>SPS</u>
Fire Alarm	9.2%	6.0%	13.1%	10.1%	5.5%	5.7%	9.4%	13.8%	9.3%	18.9%	3.4%	10.3%
Shortness of Breath	8.5%	8.1%	8.0%	8.7%	10.4%	8.6%	7.6%	8.1%	10.5%	4.5%	8.2%	5.5%
Fall - Minor	8.1%	8.8%	9.5%	9.7%	7.8%	9.4%	8.2%	7.5%	6.8%	9.3%	10.7%	7.8%
Chest Pains - Heart Attack	5.8%	5.5%	4.8%	6.2%	7.7%	5.1%	4.0%	5.7%	4.7%	3.6%	3.8%	4.2%
Misc Medical	5.3%	5.6%	5.1%	5.4%	6.3%	5.6%	4.5%	5.5%	4.6%	4.2%	4.1%	3.6%
Traffic Collision	5.2%	5.5%	6.8%	4.7%	5.3%	4.7%	7.3%	4.9%	7.1%	8.4%	1.8%	7.3%
Person Unconscious/Unresponsive	4.5%	5.5%	4.5%	4.3%	4.4%	6.0%	4.3%	4.3%	7.1%	5.1%	3.9%	5.7%
Person in Seizure	3.2%	3.0%	2.3%	2.8%	3.2%	4.2%	3.0%	4.1%	3.4%	2.1%	2.5%	2.9%
Minor Trauma	2.9%	3.3%	2.6%	3.1%	2.7%	3.0%	3.4%	2.9%	2.8%	3.6%	3.7%	3.0%
Abdominal Pain	2.4%	2.5%	2.2%	2.4%	2.9%	2.6%	2.1%	2.4%	2.3%	1.6%	3.2%	2.4%



ALHAMBRA FIRE DEPARTMENT



There were 4,656 incidents reported for Alhambra in fiscal year 2006-7. When an emergency call comes in, the dispatcher determines and enters the most appropriate and descriptive type code into the Computer Assisted Dispatch (CAD) system. Each type code falls within a category: Fire, Medical, Service, or Other. The table below shows how many incidents were entered into the CAD system for Alhambra for each type code in these categories during FY2006-7, along with the percent of incidents in that category for the year. Of the 110 type codes listed below, the three most frequent incident types were Fire Alarm (46.7% of Fire incidents), Fall - Minor (11.1% of Medical incidents), and Shortness of Breath (10.2% of Medical incidents).

FIRE

INCIDENT TYPE	# INCIDENTS	% OF FIRE CALLS
Apartment House Fire	10	1.7%
Appliance Fire - Major	13	2.2%
Appliance Fire - Minor	2	<1.0%
Carbon Monoxide Alarm	4	<1.0%
Electrical Fire	5	<1.0%
Electrical Vault Fire	2	<1.0%
Explosives/BombThreat/Scare	4	<1.0%
Fire Alarm	278	46.7%
Fire Alarm - Full Assignment	6	1.0%
Fire Alarm Reset	6	1.0%
Fire Now Out	20	3.4%
Garage Fire	5	<1.0%
House Fire	26	4.4%
Illegal Burning	20	3.4%
Misc Outside Fire	10	1.7%
Refuse Fire	28	4.7%
Smoke in a Structure	23	3.9%
Smoke in the Area	15	2.5%
Sprinkler System Activated	2	<1.0%
Structure Fire	16	2.7%
Transformer/Street Light Fire	18	3.0%
Unknown Type Fire	8	1.3%
Vegetation Fire	20	3.4%
Vegetation Fire on the Freeway	4	<1.0%
Vehicle Fire	29	4.9%
Vehicle Fire in a Structure	2	<1.0%
Vehicle Fire on the Freeway	19	3.2%

MEDICAL (cont.)

INCIDENT TYPE	# INCIDENTS	% OF MEDICAL CALLS
CVA-Neurologic	66	1.8%
Diabetic Problem	68	1.8%
Drowning/Diving Incident	11	<1.0%
Emer Medical Svc on the Fwy	8	<1.0%
EMS Call - No Details	30	<1.0%
Eye Injury	4	<1.0%
Fall - Major	10	<1.0%
Fall - Minor	411	11.1%
G.I. Bleed	31	<1.0%
Gunshot Wound	5	<1.0%
Head Pain	32	<1.0%
Heart Problem	45	1.2%
Ingestion-Poisoning-Inhalation	46	1.2%
Investigate the Welfare	4	<1.0%
Medical Alarm	33	<1.0%
Minor Trauma	153	4.1%
Misc Medical	263	7.1%
Misc Response for 1 RA	1	<1.0%
Non-Injury Traffic Collision	1	<1.0%
Nosebleed Non-Traumatic	14	<1.0%
Obstetrics/Gynecological	27	<1.0%
Overdose	28	<1.0%
Person Choking	15	<1.0%
Person Dizzy	70	1.9%
Person Down	48	1.3%
Person Hanging	1	<1.0%
Person in Seizure	141	3.8%
Person Not Breathing	93	2.5%
Person Sick	84	2.3%
Person Stabbed	10	<1.0%
Person Unconscious/Unresponsive	255	6.9%
Psychiatric	59	1.6%
Rescue	2	<1.0%
Severe Trauma	1	<1.0%
Shortness of Breath	378	10.2%
Syncope/Fainted Now Conscious	81	2.2%
TC-Rescue on the Freeway	29	<1.0%
Traffic Collision	258	6.9%
Traffic Collision - Rescue	17	<1.0%
Traffic Collision on the Fwy	87	2.3%
Traffic Collision w/ Pedestrian	61	1.6%
Unknown Medical	46	1.2%
Vehicle Into a Structure	6	<1.0%

SERVICE

INCIDENT TYPE	# INCIDENTS	% OF SERVICE CALLS
Abandoned Refrigerator	1	<1.0%
Animal Rescue/Assist	8	2.3%
Arcing Wires	14	4.1%
Bee Investigation	6	1.8%
Biohazard Investigation	5	1.5%
Broken Gas Main	1	<1.0%
Broken Water Main	4	1.2%
Chemical Outside	6	1.8%
Damage Investigation	3	<1.0%
Elevator Rescue	16	4.7%
Flowing/Gushing/Sheared Hydrant	8	2.3%
Fuel Spill	8	2.3%
Investigate a Hazardous Condition	56	16.4%
Investigate Overcrowding	6	1.8%
Major Flooded Condition	9	2.6%
Malfunction	8	2.3%
Minor Flooding	24	7.0%
Misc Odor Investigation	24	7.0%
Misc Response for 1 Engine	5	1.5%
Misc Response for a Truck	2	<1.0%
Odor of Natural Gas Inside	7	2.0%
Odor of Natural Gas Outside	11	3.2%
One Story Roof Check	6	1.8%
PD Assist/Stand-By	17	5.0%
Person Locked In/Locked Out	30	8.8%
Public Assist	22	6.4%
Roof Check 2 Stories & Above	5	1.5%
Wires Down	30	8.8%

MEDICAL

INCIDENT TYPE	# INCIDENTS	% OF MEDICAL CALLS
Abdominal Pain	115	3.1%
Allergic Reaction	17	<1.0%
Altered Level of Consciousness	103	2.8%
Animal/Human/Stings	12	<1.0%
Assault Victim	92	2.5%
Assist the Invalid	43	1.2%
Back Pain	42	1.1%
Burn Injury	3	<1.0%
Chest Pains - Heart Attack	258	6.9%

OTHER

INCIDENT TYPE	# INCIDENTS
Fireworks Violation	1
Health Services/Checkup/Etc.	8
Special Event	2



ALHAMBRA INCIDENTS BY MONTH AND CATEGORY

CATEGORY	Jul.	Aug.	Sep.	Oct	Nov	Dec	Jan	Feb	Mar	Apr	May	June	TOTAL	TOTAL
FIRE	81	47	53	42	52	66	61	48	32	39	40	38	599	12.8%
MEDICAL	323	298	279	301	293	347	361	294	323	282	315	305	3,721	79.7%
SERVICE	42	25	26	23	26	18	37	16	36	42	20	22	333	7.1%
OTHER	2	1	0	0	0	0	0	0	0	0	0	0	3	0.1%
OVS*	0	2	4	1	0	2	0	0	1	0	1	0	11	0.2%
TOTAL	448	373	362	367	371	433	459	358	392	363	376	365	4,667	

*OVS = Responses Outside the Verdugo System

Responses Per Unit

The Alhambra Fire Department responded to 4,656 incidents within its city borders and an additional 596 incidents in other jurisdictions. At least two units are dispatched to most incidents.

Unit ID	Responses
Engine 71	1,759
Engine 72	1,422
Engine 73	942
Engine 74	1,152
Ambulance 71	2,321
Ambulance 74	1,691
Truck 71	708

**Out of Jurisdiction Responses**

The Alhambra Fire Department responded to incidents outside their jurisdiction 596 times in FY2006-7:

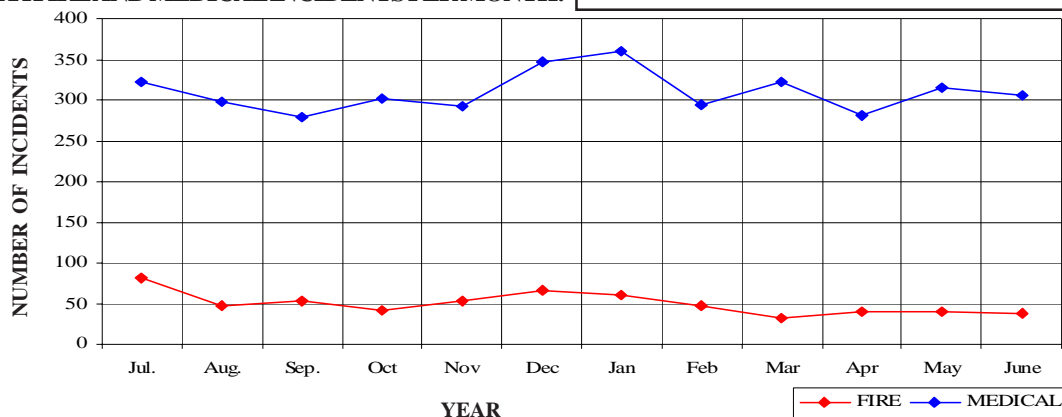
Arcadia	6	Monterey Park	233
Burbank	1	Pasadena	25
Glendale	2	San Gabriel	190
LA City	4	San Marino	32
LA County	5	South Pasadena	94
Monrovia	2	Other Cities	2
TOTAL			596

Other agencies responded to incidents in Alhambra 543 times during the same time period:

Arcadia	7
Glendale	4
LA County	3
Monterey Park	267
Pasadena	49
San Gabriel	157
San Marino	15
South Pasadena	34
Other*	7
TOTAL	543

*These responses are usually by private ambulances but may also refer to helicopters or other specialized units or responses.

ALHAMBRA FIRE AND MEDICAL INCIDENTS PER MONTH:





ARCADIA FIRE DEPARTMENT



There were 4,171 incidents reported for Arcadia in fiscal year 2006-7. When an emergency call comes in, the dispatcher determines and enters the most appropriate and descriptive type code into the Computer Assisted Dispatch (CAD) system. Each type code falls within a category: Fire, Medical, Service, or Other. The table below shows how many incidents were entered into the CAD system for Arcadia for each type code in these categories during FY2006-7, along with the percent of incidents in that category for the year. Of the 109 type codes listed below, the three most frequent incident types were Fire Alarm (67.4% of Fire incidents), Fall - Minor (12.7% of Medical incidents), and Shortness of Breath (10.6% of Medical incidents).

FIRE

INCIDENT TYPE	# INCIDENTS	% OF FIRE CALLS
Apartment House Fire	5	<1.0%
Appliance Fire - Major	13	1.6%
Carbon Monoxide Alarm	1	<1.0%
Electrical Fire	16	2.0%
Electrical Vault Fire	1	<1.0%
Explosives/BombThreat/Scare	1	<1.0%
Fire Alarm	548	67.4%
Fire Alarm - Full Assignment	5	<1.0%
Fire Alarm Reset	5	<1.0%
Fire Now Out	6	<1.0%
Garage Fire	4	<1.0%
House Fire	30	3.7%
Illegal Burning	15	1.8%
Misc Outside Fire	18	2.2%
Misc Outside Fire on the Fwy	2	<1.0%
Refuse Fire	17	2.1%
Smoke in a Structure	23	2.8%
Smoke in the Area	19	2.3%
Sprinkler System Activated	1	<1.0%
Structure Fire	8	1.0%
Transformer/Street Light Fire	19	2.3%
Unknown Type Fire	4	<1.0%
Vegetation Fire	13	1.6%
Vegetation Fire on the Freeway	5	<1.0%
Vehicle Fire	26	3.2%
Vehicle Fire in a Structure	2	<1.0%
Vehicle Fire on the Freeway	6	<1.0%

MEDICAL (cont.)

INCIDENT TYPE	# INCIDENTS	% OF MEDICAL CALLS
EMS Call - No Details	26	<1.0%
Explosion Seen or Heard	1	<1.0%
Exposure - Heat or Cold	1	<1.0%
Eye Injury	5	<1.0%
Fall - Major	11	<1.0%
Fall - Minor	398	12.7%
G.I. Bleed	29	<1.0%
Gunshot Wound	2	<1.0%
Head Pain	12	<1.0%
Heart Problem	51	1.6%
Ingestion-Poisoning-Inhalation	28	<1.0%
Injury TC with Fuel Spill	2	<1.0%
Investigate the Welfare	2	<1.0%
Medical Alarm	31	1.0%
Minor Trauma	108	3.4%
Misc Medical	213	6.8%
Misc Response for 1 RA	1	<1.0%
Non-Injury Traffic Collision	2	<1.0%
Nosebleed Non-Traumatic	8	<1.0%
Obstetrics/Gynecological	14	<1.0%
Overdose	20	<1.0%
Person Choking	11	<1.0%
Person Dizzy	64	2.0%
Person Down	93	3.0%
Person Hanging	1	<1.0%
Person in Seizure	98	3.1%
Person Not Breathing	61	1.9%
Person Sick	56	1.8%
Person Stabbed	4	<1.0%
Person Unconscious/Unresponsive	186	5.9%
Psychiatric	35	1.1%
Rescue	3	<1.0%
Severe Trauma	1	<1.0%
Shortness of Breath	332	10.6%
Syncope/Fainted Now Conscious	70	2.2%
TC-Rescue on the Freeway	11	<1.0%
Traffic Collision	285	9.1%
Traffic Collision - Rescue	16	<1.0%
Traffic Collision on the Fwy	49	1.6%
Traffic Collision w/ Pedestrian	50	1.6%
Unknown Medical	33	1.1%
Vehicle Into a Structure	2	<1.0%

SERVICE

INCIDENT TYPE	# INCIDENTS	% OF SERVICE CALLS
Animal Rescue/Assist	3	1.3%
Arcing Wires	4	1.8%
Bee Investigation	6	2.7%
Biohazard Investigation	2	<1.0%
Broken Gas Main	4	1.8%
Broken Water Main	3	1.3%
Chemical Outside	15	6.7%
Damage Investigation	1	<1.0%
Elevator Rescue	17	7.6%
Flowing/Gushing/Sheared Hydrant	8	3.6%
Fuel Spill	11	4.9%
Investigate a Hazardous Condition	18	8.0%
Investigate Overcrowding	2	<1.0%
Major Flooded Condition	13	5.8%
Malfunction	5	2.2%
Minor Flooding	20	8.9%
Misc Odor Investigation	9	4.0%
Misc Response for 1 Engine	2	<1.0%
Misc Response Full Assignment	1	<1.0%
Odor of Natural Gas Inside	3	1.3%
Odor of Natural Gas Outside	10	4.4%
One Story Roof Check	1	<1.0%
PD Assist/Stand-By	4	1.8%
Person Locked In/Locked Out	28	12.4%
Public Assist	8	3.6%
Wires Down	27	12.0%

MEDICAL

Abdominal Pain	90	2.9%
Allergic Reaction	17	<1.0%
Altered Level of Consciousness	92	2.9%
Animal/Human/Stings	1	<1.0%
Assault Victim	47	1.5%
Assist the Invalid	82	2.6%
Back Pain	47	1.5%
Burn Injury	1	<1.0%
Chest Pains - Heart Attack	200	6.4%
CVA-Neurologic	75	2.4%
Diabetic Problem	48	1.5%
Emer Medical Svc on the Fwy	9	<1.0%

OTHER

INCIDENT TYPE	# INCIDENTS
Fireworks Violation	3
Special Event	2



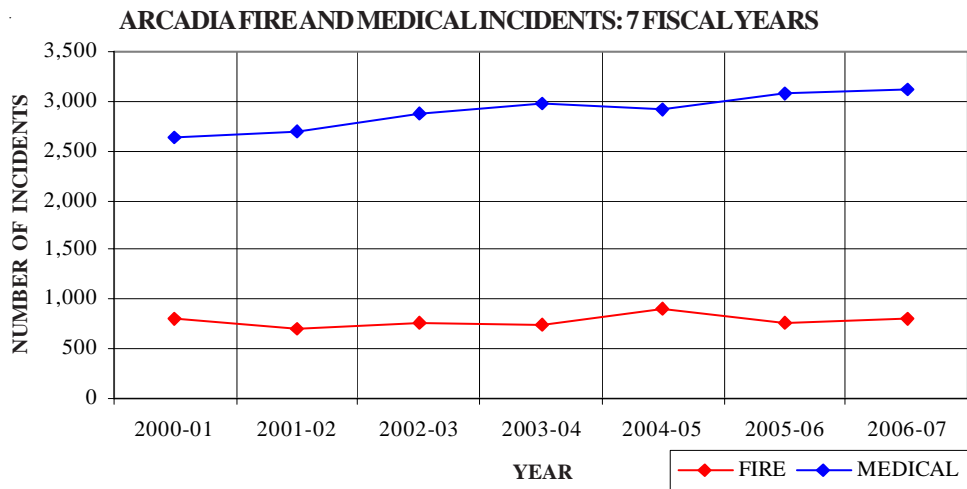
ARCADIA INCIDENTS BY MONTH AND CATEGORY

CATEGORY	Jul.	Aug.	Sep.	Oct	Nov	Dec	Jan	Feb	Mar	Apr	May	June	TOTAL	TOTAL
FIRE	79	79	71	65	78	64	78	47	73	55	41	68	798	18.9%
MEDICAL	243	204	265	285	257	262	299	259	300	250	251	252	3,127	73.9%
SERVICE	32	11	18	17	27	21	15	16	19	28	18	18	240	5.7%
OTHER	5	0	0	0	0	0	0	1	0	0	0	0	6	0.1%
OVS*	5	6	9	7	5	8	5	4	3	2	4	3	61	1.4%
TOTAL	364	300	363	374	367	355	397	327	395	335	314	341	4,232	

*OVS = Responses Outside the Verdugo System

ARCADIA INCIDENTS: 7 FISCAL YEARS

	2000-01	2001-02	2002-03	2003-04	2004-05	2005-06	2006-07
FIRE	796	713	761	743	914	773	798
MEDICAL	2,633	2,691	2,877	2,968	2,907	3,079	3,127
SERVICE	318	244	285	245	267	249	240
OTHER	3	3	4	5	2	6	6
OVS*	35	34	46	52	37	49	61
TOTAL	3,785	3,685	3,973	4,013	4,127	4,156	4,232



Out of Jurisdiction Responses

The Arcadia Fire Department responded to incidents outside their jurisdiction 499 times in FY2006-7:

Alhambra	7	Pasadena	94
Burbank	1	San Gabriel	27
Glendale	1	San Marino	19
LA City	1	Sierra Madre	4
LA County	54	South Pasadena	2
Monrovia	270	Other Cities	6
Monterey Park	13	TOTAL	499

Other agencies responded to incidents in Arcadia 638 times during the year:

Alhambra	6	San Gabriel	9
Burbank	1	San Marino	9
Glendale	1	South Pasadena	3
Monrovia	334	LA City	1
Monterey Park	1	LA County	68
Pasadena	100	Other*	105
		TOTAL	638

*These responses are usually by private ambulances but may also refer to helicopters or other specialized units or responses.

Responses Per Unit

The Arcadia Fire Department responded to 4,171 incidents within its city borders and an additional 499 incidents in other jurisdictions. At least two units are dispatched to most incidents.

<u>Unit ID</u>	<u>Responses</u>
Air Utility 106	7
Engine 105	1,714
Engine 106	2,028
Engine 107	852
Ambulance 105	1,642
Ambulance 106	1,791
Truck 105	663
USAR 106	11





BURBANK FIRE DEPARTMENT



There were 9,242 incidents reported for Burbank in fiscal year 2006-7. When an emergency call comes in, the dispatcher determines and enters the most appropriate and descriptive type code into the Computer Assisted Dispatch (CAD) system. Each type code falls within a category: Fire, Medical, Service, or Other. The table below shows how many incidents were entered into the CAD system for Burbank for each type code in these categories during FY2006-7, along with the percent of incidents in that category for the year. Of the 117 type codes listed below, the three most frequent incident types were Fire Alarm (60.2% of Fire incidents), Fall - Minor (12.5% of Medical incidents), and Shortness of Breath (11.2% of Medical incidents).

FIRE

INCIDENT TYPE	# INCIDENTS	% OF FIRE CALLS
Apartment House Fire	18	1.2%
Appliance Fire - Major	20	1.3%
Appliance Fire - Minor	1	<1.0%
Brush Fire	5	<1.0%
Carbon Monoxide Alarm	23	1.5%
Electrical Fire	18	1.2%
Electrical Vault Fire	1	<1.0%
Emergency Landing at Airport	31	2.0%
Explosives/BombThreat/Scare	4	<1.0%
Fire Alarm	935	60.2%
Fire Alarm - Full Assignment	19	1.2%
Fire Alarm Reset	24	1.5%
Fire Now Out	24	1.5%
Garage Fire	6	<1.0%
House Fire	32	2.1%
Illegal Burning	27	1.7%
Misc Outside Fire	20	1.3%
Misc Outside Fire on the Fwy	2	<1.0%
Plane Accident, Down or Fire	2	<1.0%
Refuse Fire	39	2.5%
Smoke in a Structure	67	4.3%
Smoke in the Area	53	3.4%
Sprinkler System Activated	4	<1.0%
Structure Fire	33	2.1%
Transformer/Street Light Fire	18	1.2%
Unknown Type Fire	6	<1.0%
Vegetation Fire	24	1.5%
Vegetation Fire on the Fwy	9	<1.0%
Vehicle Fire	52	3.3%
Vehicle Fire in a Structure	5	<1.0%
Vehicle Fire on the Freeway	32	2.1%

MEDICAL (cont.)

INCIDENT TYPE	# INCIDENTS	% OF MEDICAL CALLS
Diabetic Problem	129	1.8%
Electrical Shock Injury	5	<1.0%
Emer Medical Svc on the Fwy	16	<1.0%
EMS Call - No Details	34	<1.0%
Explosion Seen or Heard	2	<1.0%
Exposure - Heat or Cold	3	<1.0%
Eye Injury	9	<1.0%
Fall - Major	24	<1.0%
Fall - Minor	893	12.5%
G.I. Bleed	68	<1.0%
Gunshot Wound	2	<1.0%
Head Pain	44	<1.0%
Heart Problem	159	2.2%
Ingestion-Poisoning-Inhalation	59	<1.0%
Injury TC with Fuel Spill	3	<1.0%
Investigate the Welfare	9	<1.0%
Medical Alarm	49	<1.0%
Minor Trauma	290	4.1%
Misc Medical	500	7.0%
Mountain Rescue	1	<1.0%
Non-Injury Traffic Collision	8	<1.0%
Nosebleed Non-Traumatic	36	<1.0%
Obstetrics/Gynecological	38	<1.0%
Overdose	67	<1.0%
Person Choking	31	<1.0%
Person Dizzy	190	2.7%
Person Down	126	1.8%
Person Hanging	4	<1.0%
Person in Seizure	262	3.7%
Person Not Breathing	121	1.7%
Person Sick	181	2.5%
Person Stabbed	7	<1.0%
Person Unconscious/Unresponsive	399	5.6%
Psychiatric	68	<1.0%
Rescue	7	<1.0%
Severe Trauma	7	<1.0%
Shortness of Breath	802	11.2%
Syncope/Fainted Now Conscious	167	2.3%
TC-Rescue on the Freeway	33	<1.0%
Traffic Collision	431	6.0%
Traffic Collision - Rescue	31	<1.0%
Traffic Collision on the Fwy	100	1.4%
Traffic Collision w/ Pedestrian	95	1.3%
Unknown Medical	97	1.4%
Vehicle Into a Structure	7	<1.0%

SERVICE

INCIDENT TYPE	# INCIDENTS	% OF SERVICE CALLS
Abandoned Refrigerator	10	1.9%
Animal Rescue/Assist	5	<1.0%
Arcing Wires	6	1.1%
Bee Investigation	2	<1.0%
Biohazard Investigation	14	2.6%
Broken Gas Main	11	2.1%
Broken Water Main	17	3.2%
Chemical Outside	38	7.1%
Elevator Rescue	51	9.6%
Flowing/Gushing/Sheared Hydrant	10	1.9%
Fuel Spill	53	10.0%
Hazardous Materials Response	4	<1.0%
Investigate a Hazardous Condition	59	11.1%
Investigate Overcrowding	8	1.5%
Major Flooded Condition	26	4.9%
Malfunction	17	3.2%
Minor Flooding	35	6.6%
Misc Odor Investigation	40	7.5%
Misc Response for 1 Engine	6	1.1%
Misc Response for a Truck	1	<1.0%
Misc Response Full Assignment	1	<1.0%
Odor of Natural Gas Inside	22	4.1%
Odor of Natural Gas Outside	29	5.5%
PD Assist/Stand-By	4	<1.0%
Person Locked In/Locked Out	22	4.1%
Public Assist	19	3.6%
Roof Check 2 Stories & Above	2	<1.0%
Wires Down	20	3.8%

MEDICAL

INCIDENT TYPE	# INCIDENTS	% OF MEDICAL CALLS
Abdominal Pain	224	3.1%
Allergic Reaction	35	<1.0%
Altered Level of Consciousness	200	2.8%
Animal/Human/Stings	15	<1.0%
Assault Victim	64	<1.0%
Assist the Invalid	173	2.4%
Back Pain	105	1.5%
Burn Injury	6	<1.0%
Chest Pains - Heart Attack	574	8.0%
Collapse/Extrication/Rescue	1	<1.0%
CVA-Neurologic	148	2.1%

OTHER

INCIDENT TYPE	# INCIDENTS
Fireworks Violation	2
Special Event	3

BURBANK INCIDENTS BY MONTH AND CATEGORY

CATEGORY	Jul.	Aug.	Sep.	Oct	Nov	Dec	Jan	Feb	Mar	Apr	May	June	TOTAL	TOTAL
FIRE	115	100	142	124	124	152	144	142	122	127	141	121	1,554	16.6%
MEDICAL	641	602	534	589	600	604	597	562	601	641	583	592	7,146	76.2%
SERVICE	47	43	54	37	32	36	64	27	45	50	50	44	529	5.6%
OTHER	4	1	1	0	1	1	3	0	0	1	1	0	13	0.1%
OVS*	12	13	12	11	9	15	10	12	12	10	16	9	141	1.5%
TOTAL	819	759	743	761	766	808	818	743	780	829	791	766	9,383	

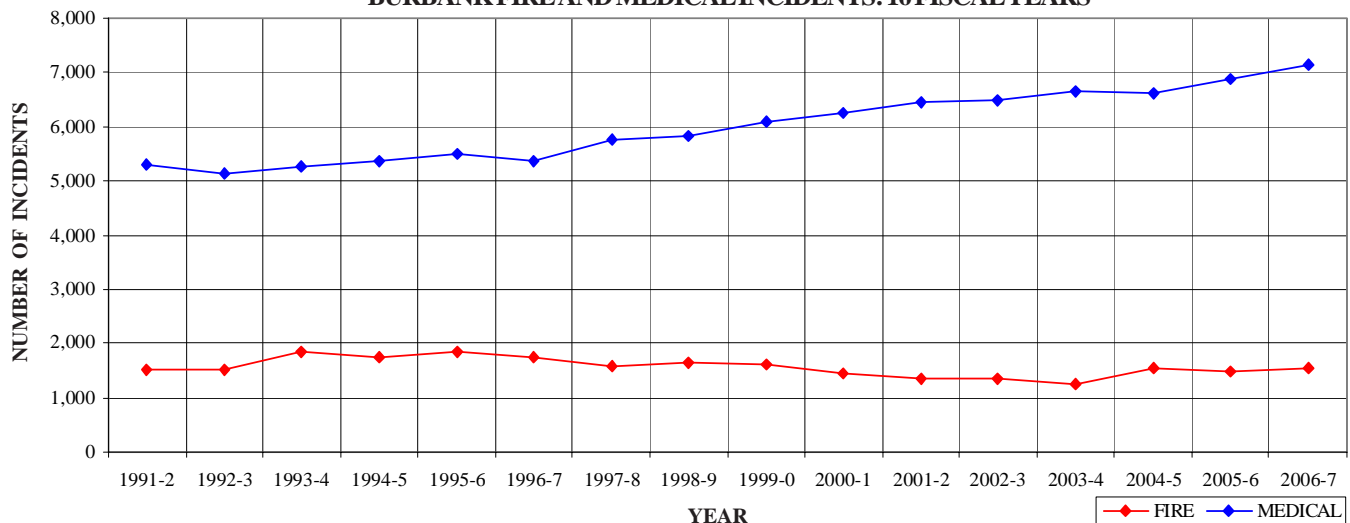
*OVS = Responses Outside the Verdugo System

BURBANK INCIDENTS: 16 FISCAL YEAR HISTORY

	<u>1991-2</u>	<u>1992-3</u>	<u>1993-4</u>	<u>1994-5</u>	<u>1995-6</u>	<u>1996-7</u>	<u>1997-8</u>	<u>1998-9</u>
FIRE	1,519	1,501	1,849	1,739	1,858	1,756	1,581	1,642
MEDICAL	5,289	5,129	5,276	5,368	5,490	5,378	5,775	5,812
SERVICE	676	643	775	652	619	648	598	687
OTHER	9	40	32	53	33	4	5	6
OVS*	0	0	0	0	7	17	25	21
TOTAL	7,493	7,313	7,932	7,812	8,007	7,803	7,984	8,168

	<u>1999-00</u>	<u>2000-1</u>	<u>2001-2</u>	<u>2002-3</u>	<u>2003-4</u>	<u>2004-5</u>	<u>2005-6</u>	<u>2006-7</u>
FIRE	1,621	1,457	1,365	1,349	1,253	1,532	1,478	1,554
MEDICAL	6,075	6,262	6,444	6,497	6,651	6,612	6,893	7,146
SERVICE	655	631	557	548	452	552	504	529
OTHER	13	9	21	14	8	9	4	13
OVS*	31	36	34	50	56	52	66	141
TOTAL	8,395	8,395	8,421	8,458	8,420	8,757	8,945	9,383

BURBANK FIRE AND MEDICAL INCIDENTS: 16 FISCAL YEARS



Out of Jurisdiction Responses

The Burbank Fire Department responded to incidents outside their jurisdiction 476 times in FY2006-7:



Arcadia	1
Glendale	296
LA City	117
LA County	20
Monrovia	2
Monterey Park	3
Pasadena	31
San Marino	1
Sierra Madre	1
Other Cities	4
TOTAL	476

Other agencies responded to incidents in Burbank 536 times during the year:

Alhambra	1
Arcadia	1
Glendale	356
LA City	17
LA County	1
Monrovia	1
Monterey Park	1
Pasadena	24
South Pasadena	1
Other*	133
TOTAL	536

*These responses are usually by private ambulances but may also refer to helicopters, private company fire engines, or airport crash-related vehicles.

Responses Per Unit

The Burbank Fire Department responded to 9,242 incidents within its city borders and an additional 476 incidents in other jurisdictions. At least two units are dispatched to most incidents.

<u>Unit ID</u>	<u>Total Responses</u>
Engine 11	2,600
Engine 12	1,595
Engine 13	1,730
Engine 14	1,370
Engine 15	2,054
Engine 16	901
Hazmat 12	46
Ambulance 11	2,717
Ambulance 13	2,323
Ambulance 15	2,740
Truck 11	760
Truck 12	543
Water Tender 16	3





GLENDALE FIRE DEPARTMENT



There were 14,906 incidents reported for Glendale in fiscal year 2006-7. When an emergency call comes in, the dispatcher determines and enters the most appropriate and descriptive type code into the Computer Assisted Dispatch (CAD) system. Each type code falls within a category: Fire, Medical, Service, or Other. The table below shows how many incidents were entered into the CAD system for Glendale for each type code in these categories during FY2006-7, along with the percent of incidents in that category for the year. Of the 124 type codes listed below, the three most frequent incident types were Fire Alarm (50.6% of Fire incidents), Shortness of Breath (12.4% of Medical incidents), and Fall - Minor (9.3% of Medical incidents).

FIRE

INCIDENT TYPE	# INCIDENTS	% OF FIRE CALLS
Apartment House Fire	37	2.3%
Appliance Fire - Major	44	2.7%
Appliance Fire - Minor	3	<1.0%
Brush Fire	9	<1.0%
Carbon Monoxide Alarm	12	<1.0%
Electrical Fire	17	1.1%
Electrical Vault Fire	2	<1.0%
Explosives/BombThreat/Scare	8	<1.0%
Fire Alarm	819	50.6%
Fire Alarm - Full Assignment	28	1.7%
Fire Alarm Reset	32	2.0%
Fire Now Out	43	2.7%
Garage Fire	7	<1.0%
House Fire	37	2.3%
Illegal Burning	57	3.5%
Misc Outside Fire	29	1.8%
Misc Outside Fire on the Fwy	5	<1.0%
Person on Fire	1	<1.0%
Refuse Fire	53	3.3%
Smoke in a Structure	60	3.7%
Smoke in the Area	78	4.8%
Sprinkler System Activated	5	<1.0%
Structure Fire	19	1.2%
Transformer/Street Light Fire	25	1.5%
Unknown Type Fire	11	<1.0%
Vegetation Fire	28	1.7%
Vegetation Fire on Fwy	10	<1.0%
Vehicle Fire	85	5.3%
Vehicle Fire in a Structure	4	<1.0%
Vehicle Fire on the Freeway	49	3.0%

MEDICAL (cont.)

INCIDENT TYPE	# INCIDENTS	% OF MEDICAL CALLS
Drowning/Diving Incident	1	<1.0%
Electrical Shock Injury	2	<1.0%
Emer Medical Svc on the Fwy	23	<1.0%
EMS Call - No Details	75	<1.0%
Exposure - Heat or Cold	1	<1.0%
Eye Injury	5	<1.0%
Fall - Major	40	<1.0%
Fall - Minor	1170	9.3%
G.I. Bleed	142	1.1%
Gunshot Wound	10	<1.0%
Head Pain	94	<1.0%
Heart Problem	336	2.7%
Ingestion-Poisoning-Inhalation	125	1.0%
Injury TC with Fuel Spill	3	<1.0%
Investigate the Welfare	14	<1.0%
Medical Alarm	63	<1.0%
Minor Trauma	402	3.2%
Misc Medical	942	7.5%
Misc Response Engine & RA	1	<1.0%
Misc Response for 1 RA	1	<1.0%
Mountain Rescue	7	<1.0%
Non-Injury Traffic Collision	17	<1.0%
Nosebleed Non-Traumatic	81	<1.0%
Obstetrics/Gynecological	58	<1.0%
Overdose	106	<1.0%
Person Choking	44	<1.0%
Person Dizzy	296	2.4%
Person Down	453	3.6%
Person Hanging	2	<1.0%
Person in Seizure	476	3.8%
Person Not Breathing	211	1.7%
Person Sick	337	2.7%
Person Stabbed	19	<1.0%
Person Unconscious/Unresponsive	652	5.2%
Psychiatric	136	1.1%
Rescue	12	<1.0%
Severe Trauma	6	<1.0%
Shortness of Breath	1557	12.4%
Swift Water Rescue	1	<1.0%
Syncope/Fainted Now Conscious	245	2.0%
TC-Rescue on the Freeway	34	<1.0%
Traffic Collision	790	6.3%
Traffic Collision - Rescue	43	<1.0%
Traffic Collision on the Fwy	206	1.6%
Traffic Collision w/ Pedestrian	180	1.4%
Traffic Collision w/ Train	2	<1.0%
Trench Rescue	2	<1.0%
Unknown Medical	167	1.3%
Vehicle Into a Structure	22	<1.0%

SERVICE

INCIDENT TYPE	# INCIDENTS	% OF SERVICE CALLS
Abandoned Refrigerator	9	1.2%
Animal Rescue/Assist	13	1.7%
Arcing Wires	6	<1.0%
Bee Investigation	5	<1.0%
Biohazard Investigation	14	1.9%
Broken Gas Main	10	1.3%
Broken Water Main	19	2.5%
Chemical Outside	64	8.5%
Damage Investigation	7	<1.0%
Elevator Rescue	102	13.5%
Flowing/Gushing/Sheared Hydrant	19	2.5%
Fuel Spill	38	5.0%
Hazardous Materials Response	7	<1.0%
Investigate a Hazardous Condition	73	9.7%
Investigate a Mudslide	1	<1.0%
Investigate Overcrowding	3	<1.0%
Major Flooded Condition	46	6.1%
Malfunction	15	2.0%
Minor Flooding	48	6.3%
Misc Odor Investigation	33	4.4%
Misc Response for 1 Engine	11	1.5%
Misc Response for a Truck	6	<1.0%
Misc Response Full Assignment	3	<1.0%
Odor of Natural Gas Inside	37	4.9%
Odor of Natural Gas Outside	25	3.3%
One Story Roof Check	3	<1.0%
PD Assist/Stand-By	12	1.6%
Person Locked In/Locked Out	48	6.3%
Public Assist	45	6.0%
Roof Check 2 Stories & Above	5	<1.0%
Wires Down	29	3.8%

MEDICAL

Abdominal Pain	430	3.4%
Allergic Reaction	50	<1.0%
Altered Level of Consciousness	319	2.5%
Animal/Human/Stings	23	<1.0%
Assault Victim	191	1.5%
Assist the Invalid	156	1.2%
Back Pain	201	1.6%
Burn Injury	11	<1.0%
Chest Pains - Heart Attack	1155	9.2%
Collapse/Extrication/Rescue	1	<1.0%
CVA-Neurologic	200	1.6%
Diabetic Problem	201	1.6%

OTHER

INCIDENT TYPE	# INCIDENTS
Fireworks Violation	5
Special Event	1

GLENDALE INCIDENTS BY MONTH AND CATEGORY

CATEGORY	Jul.	Aug.	Sep.	Oct	Nov	Dec	Jan	Feb	Mar	Apr	May	June	TOTAL	TOTAL
FIRE	165	128	134	154	154	145	152	119	121	121	138	118	1,649	10.8%
MEDICAL	1,021	1,025	1,019	1,032	946	1,069	1,176	1,045	1,090	1,079	1,030	990	12,522	81.7%
SERVICE	71	61	61	69	54	54	57	50	63	60	63	55	718	4.7%
OTHER	5	2	1	1	0	3	1	0	1	2	1	0	17	0.1%
OVS*	30	28	29	31	40	51	28	34	32	34	51	27	415	2.7%
TOTAL	1,292	1,244	1,244	1,287	1,194	1,322	1,414	1,248	1,307	1,296	1,283	1,190	15,321	

*OVS = Responses Outside the Verdugo System

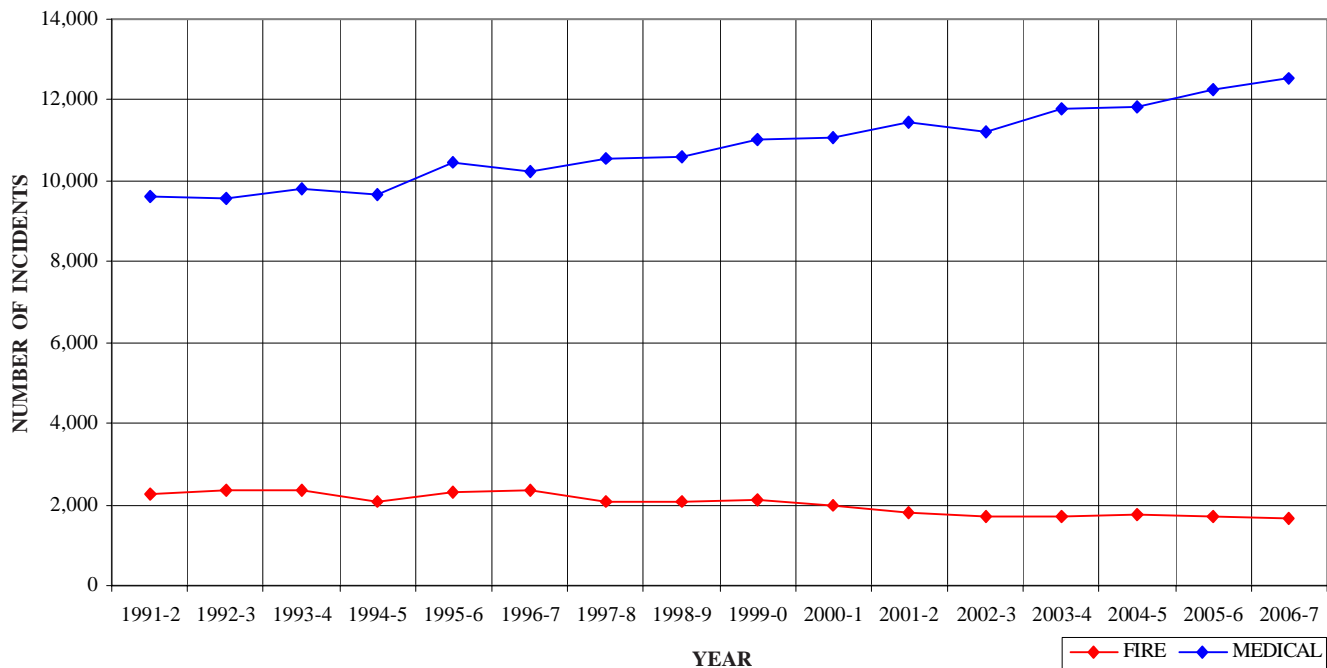
GLENDALE INCIDENTS: 16 FISCAL YEAR HISTORY

	1991-2	1992-3	1993-4	1994-5	1995-6	1996-7	1997-8	1998-9
FIRE	2,282	2,368	2,377	2,077	2,304	2,340	2,087	2,089
MEDICAL	9,619	9,589	9,782	9,644	10,479	10,213	10,544	10,608
SERVICE	1,000	894	1,217	961	888	998	959	871
OTHER	4	10	61	163	28	10	12	23
OVS*	0	0	0	0	106	200	171	172
TOTAL	12,905	12,861	13,437	12,845	13,805	13,761	13,773	13,763

	1999-0	2000-1	2001-2	2002-3	2003-4	2004-5	2005-6	2006-7
FIRE	2,121	1,968	1,799	1,700	1,701	1,733	1,702	1,649
MEDICAL	11,020	11,062	11,442	11,235	11,795	11,850	12,261	12,522
SERVICE	926	921	991	932	770	1,024	789	718
OTHER	36	30	46	64	28	26	7	17
OVS*	165	154	155	190	180	204	211	415
TOTAL	14,268	14,135	14,433	14,121	14,474	14,837	14,970	15,321



GLENDALE FIRE AND MEDICAL INCIDENTS: 16 FISCAL YEARS



Out of Jurisdiction Responses

The Glendale Fire Department responded to incidents outside their jurisdiction 912 times in FY 2006-7:



Alhambra	4
Arcadia	1
Burbank	356
LA City	330
LA County	78
Monrovia	3
Monterey Park	2
Pasadena	125
San Gabriel	3
Sierra Madre	1
South Pasadena	2
Other Cities	7
TOTAL	912

Other agencies responded to incidents in Glendale 463 times during the year:

Alhambra	2
Arcadia	1
Burbank	296
LA City	31
LA County	47
Monrovia	1
Monterey Park	1
Pasadena	57
South Pasadena	1
Other*	26
TOTAL	463

*These responses are usually by private ambulances but may also refer to helicopters or other specialized units or responses.

Responses Per Unit

The Glendale Fire Department responded to 14,906 incidents within its city borders and an additional 912 incidents in other jurisdictions. At least two units are dispatched to most incidents.

<u>Unit ID</u>	<u>Responses</u>	<u>Unit ID</u>	<u>Responses</u>
Air Utility 28	20	Ambulance 21	4,085
Engine 21	3,192	Ambulance 22	817
Engine 22	2,388	Ambulance 25	3,773
Engine 23	273	Ambulance 26	3,640
Engine 24	943	Ambulance 29	1,634
Engine 25	3,213	Truck 21	873
Engine 26	2,614	Truck 26	914
Engine 27	2,147	Truck 29	277
Engine 28	678	USAR 29	25
Engine 29	975	WT21	5
HazMat 24	38	WT29	2





MONROVIA FIRE DEPARTMENT



There were 3,224 incidents reported for Monrovia in fiscal year 2006-7. When an emergency call comes in, the dispatcher determines and enters the most appropriate and descriptive type code into the Computer Assisted Dispatch (CAD) system. Each type code falls within a category: Fire, Medical, Service, or Other. The table below shows how many incidents were entered into the CAD system for Monrovia for each type code in these categories during FY2006-7, along with the percent of incidents in that category for the year. Of the 107 type codes listed below, the three most frequent incident types were Fire Alarm (59.1% of Fire incidents), Fall - Minor (10.9% of Medical incidents), and Shortness of Breath (10.0% of Medical incidents).

FIRE

INCIDENT TYPE	# INCIDENTS	% OF FIRE CALLS
Apartment House Fire	5	1.0%
Appliance Fire - Major	6	1.1%
Appliance Fire - Minor	1	<1.0%
Brush Fire	4	<1.0%
Carbon Monoxide Alarm	5	1.0%
Electrical Fire	12	2.3%
Electrical Vault Fire	1	<1.0%
Explosives/BombThreat/Scare	1	<1.0%
Fire Alarm	311	59.1%
Fire Alarm - Full Assignment	2	<1.0%
Fire Alarm Reset	4	<1.0%
Fire Now Out	10	1.9%
Garage Fire	3	<1.0%
House Fire	10	1.9%
Illegal Burning	8	1.5%
Misc Outside Fire	5	1.0%
Misc Outside Fire on the Fwy	3	<1.0%
Refuse Fire	11	2.1%
Smoke in a Structure	16	3.0%
Smoke in the Area	26	4.9%
Sprinkler System Activated	2	<1.0%
Structure Fire	9	1.7%
Transformer/Street Light Fire	14	2.7%
Unknown Type Fire	1	<1.0%
Vegetation Fire	9	1.7%
Vegetation Fire on the Fwy	6	1.1%
Vehicle Fire	29	5.5%
Vehicle Fire in a Structure	1	<1.0%
Vehicle Fire on the Freeway	11	2.1%

MEDICAL (cont.)

INCIDENT TYPE	# INCIDENTS	% OF MEDICAL CALLS
Electrical Shock Injury	1	<1.0%
Emer Medical Svc on the Fwy	5	<1.0%
EMS Call - No Details	32	1.3%
Fall - Major	9	<1.0%
Fall - Minor	271	10.9%
G.I. Bleed	20	<1.0%
Gunshot Wound	11	<1.0%
Head Pain	7	<1.0%
Heart Problem	32	1.3%
Ingestion-Poisoning-Inhalation	34	1.4%
Investigate the Welfare	3	<1.0%
Medical Alarm	20	<1.0%
Minor Trauma	111	4.5%
Misc Medical	149	6.0%
Misc Response Engine & RA	1	<1.0%
Mountain Rescue	3	<1.0%
Non-Injury Traffic Collision	3	<1.0%
Nosebleed Non-Traumatic	10	<1.0%
Obstetrics/Gynecological	15	<1.0%
Overdose	37	1.5%
Person Choking	9	<1.0%
Person Dizzy	51	2.0%
Person Down	73	2.9%
Person in Seizure	99	4.0%
Person Not Breathing	41	1.6%
Person Sick	43	1.7%
Person Stabbed	3	<1.0%
Person Unconscious/Unresponsive	142	5.7%
Psychiatric	23	<1.0%
Rescue	1	<1.0%
Severe Trauma	2	<1.0%
Shortness of Breath	250	10.0%
Syncope/Fainted Now Conscious	48	1.9%
TC-Rescue on the Freeway	9	<1.0%
Traffic Collision	243	9.8%
Traffic Collision - Rescue	16	<1.0%
Traffic Collision on the Fwy	69	2.8%
Traffic Collision w/ Pedestrian	42	1.7%
Unknown Medical	22	<1.0%
Vehicle Into a Structure	5	<1.0%

SERVICE

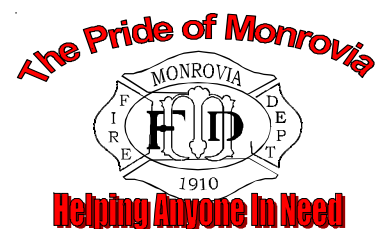
INCIDENT TYPE	# INCIDENTS	% OF SERVICE CALLS
Animal Rescue/Assist	12	5.5%
Arcing Wires	4	1.8%
Bee Investigation	4	1.8%
Biohazard Investigation	6	2.8%
Broken Gas Main	3	1.4%
Broken Water Main	1	<1.0%
Chemical Outside	6	2.8%
Elevator Rescue	4	1.8%
Flowing/Gushing/Sheared Hydrant	7	3.2%
Fuel Spill	15	6.9%
Hazardous Materials Response	2	<1.0%
Investigate a Hazardous Condition	19	8.7%
Major Flooded Condition	6	2.8%
Malfunction	5	2.3%
Minor Flooding	16	7.3%
Misc Odor Investigation	10	4.6%
Misc Response for 1 Engine	3	1.4%
Misc Response for a Truck	3	1.4%
Misc Response Full Assignment	1	<1.0%
Odor of Natural Gas Inside	13	6.0%
Odor of Natural Gas Outside	8	3.7%
One Story Roof Check	2	<1.0%
PD Assist/Stand-By	2	<1.0%
Person Locked In/Locked Out	24	11.0%
Public Assist	10	4.6%
Wires Down	32	14.7%

MEDICAL

INCIDENT TYPE	# INCIDENTS	% OF MEDICAL CALLS
Abdominal Pain	69	2.8%
Allergic Reaction	12	<1.0%
Altered Level of Consciousness	69	2.8%
Animal/Human/Stings	7	<1.0%
Assault Victim	59	2.4%
Assist the Invalid	58	2.3%
Back Pain	24	1.0%
Burn Injury	2	<1.0%
Chest Pains - Heart Attack	134	5.4%
CVA-Neurologic	43	1.7%
Diabetic Problem	46	1.8%

OTHER

INCIDENT TYPE	# INCIDENTS
Transfer to Police Dept	1



MONROVIA INCIDENTS BY MONTH AND CATEGORY

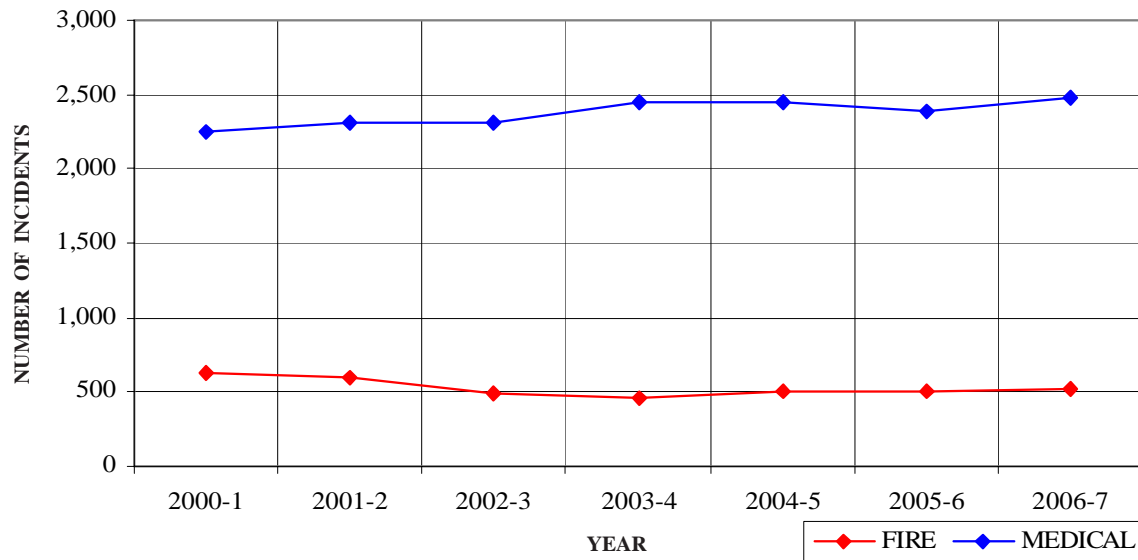
CATEGORY	Jul.	Aug.	Sep.	Oct	Nov	Dec	Jan	Feb	Mar	Apr	May	June	TOTAL	TOTAL
FIRE	59	42	28	49	48	38	54	40	43	45	37	40	523	16.0%
MEDICAL	217	193	170	183	218	236	207	180	229	229	209	209	2,480	75.8%
SERVICE	23	10	13	13	13	19	29	12	21	26	18	21	218	6.7%
OTHER	0	1	0	1	0	0	0	0	0	0	0	1	3	0.1%
OVS*	5	2	10	4	7	2	2	1	6	1	5	4	49	1.5%
TOTAL	304	248	221	250	286	295	292	233	299	301	269	275	3,273	

*OVS = Responses Outside the Verdugo System

MONROVIA INCIDENTS: 7 FISCAL YEAR HISTORY

	<u>2000-1</u>	<u>2001-2</u>	<u>2002-3</u>	<u>2003-4</u>	<u>2004-5</u>	<u>2005-6</u>	<u>2006-7</u>
FIRE	621	597	491	461	504	510	523
MEDICAL	2,244	2,309	2,314	2,443	2,449	2,384	2,480
SERVICE	252	257	265	216	244	238	218
OTHER	2	4	47	7	0	1	3
OVS*	28	47	55	56	47	36	49
TOTAL	3,147	3,214	3,172	3,183	3,244	3,169	3,273

MONROVIA FIRE AND MEDICAL INCIDENTS: 7 FISCAL YEARS



Out of Jurisdiction Responses

The Monrovia Fire Department responded to incidents outside their jurisdiction 402 times in FY 2006-7:

Arcadia	334
Burbank	1
Glendale	1
LA City	1
LA County	43
Monterey Park	1
Pasadena	12
San Gabriel	2
Sierra Madre	2
Other Cities	5
TOTAL	402

Other fire agencies responded to incidents in Monrovia 368 times during the year, in addition to 2,523 responses by other units:

Alhambra	2
Arcadia	270
Burbank	2
Glendale	3
LA County	55
Pasadena	28
San Gabriel	2
San Marino	4
South Pasadena	2
Other*	2,523
TOTAL	2,891

*These responses are usually by private ambulances but may also refer to helicopters or other specialized units or responses. The high total in Monrovia is due to the use of private ambulances for EMS incidents; a Fire Department Squad and Engine are also dispatched in most instances.

Responses Per Unit

The Monrovia Fire Department responded to 3,224 incidents within its city borders and an additional 402 incidents in other jurisdictions. At least two units are dispatched to most incidents.

<u>Unit ID</u>	<u>Responses</u>
Engine 101	1,998
Engine 102	1,672
Squad 101	1,692
Truck 101	488
Water Tender 101	13





MONTEREY PARK FIRE DEPARTMENT



There were 3,311 incidents reported for Monterey Park in fiscal year 2006-7. When an emergency call comes in, the dispatcher determines and enters the most appropriate and descriptive type code into the Computer Assisted Dispatch (CAD) system. Each type code falls within a category: Fire, Medical, Service, or Other. The table below shows how many incidents were entered into the CAD system for Monterey Park for each type code in these categories during FY2006-7, along with the percent of incidents in that category for the year. Of the 110 type codes listed below, the three most frequent incident types were Fire Alarm (46.1% of Fire incidents), Fall - Minor (11.1% of Medical incidents), and Shortness of Breath (10.2% of Medical incidents).

FIRE

INCIDENT TYPE	# INCIDENTS	% OF FIRE CALLS
Apartment House Fire	9	2.2%
Appliance Fire - Major	7	1.7%
Brush Fire	4	1.0%
Carbon Monoxide Alarm	1	<1.0%
Electrical Fire	9	2.2%
Electrical Vault Fire	1	<1.0%
Explosives/BombThreat/Scare	2	<1.0%
Fire Alarm	185	46.1%
Fire Alarm - Full Assignment	2	<1.0%
Fire Alarm Reset	4	1.0%
Fire Now Out	11	2.7%
Garage Fire	2	<1.0%
House Fire	10	2.5%
Illegal Burning	7	1.7%
Misc Outside Fire	12	3.0%
Misc Outside Fire on the Fwy	2	<1.0%
Refuse Fire	14	3.5%
Smoke in a Structure	13	3.2%
Smoke in the Area	14	3.5%
Structure Fire	17	4.2%
Transformer/Street Light Fire	12	3.0%
Unknown Type Fire	3	<1.0%
Vegetation Fire	9	2.2%
Vegetation Fire on the Fwy	6	1.5%
Vehicle Fire	20	5.0%
Vehicle Fire in a Structure	2	<1.0%
Vehicle Fire on the Freeway	23	5.7%

MEDICAL (cont.)

INCIDENT TYPE	# INCIDENTS	% OF MEDICAL CALLS
Diabetic Problem	53	1.9%
Drowning/Diving Incident	9	<1.0%
Electrical Shock Injury	1	<1.0%
Emer Medical Svc on the Fwy	8	<1.0%
EMS Call - No Details	34	1.2%
Eye Injury	1	<1.0%
Fall - Major	1	<1.0%
Fall - Minor	302	11.1%
G.I. Bleed	31	1.1%
Gunshot Wound	4	<1.0%
Head Pain	12	<1.0%
Heart Problem	39	1.4%
Ingestion-Poisoning-Inhalation	19	<1.0%
Injury TC with Fuel Spill	1	<1.0%
Investigate the Welfare	2	<1.0%
Medical Alarm	34	1.2%
Minor Trauma	97	3.6%
Misc Medical	181	6.6%
Misc Response Engine & RA	1	<1.0%
Non-Injury Traffic Collision	1	<1.0%
Nosebleed Non-Traumatic	14	<1.0%
Obstetrics/Gynecological	16	<1.0%
Overdose	21	<1.0%
Person Choking	14	<1.0%
Person Dizzy	65	2.4%
Person Down	63	2.3%
Person Hanging	1	<1.0%
Person in Seizure	136	5.0%
Person Not Breathing	52	1.9%
Person Sick	72	2.6%
Person Stabbed	7	<1.0%
Person Threatening to Jump	1	<1.0%
Person Unconscious/Unresponsive	193	7.1%
Psychiatric	24	<1.0%
Severe Trauma	2	<1.0%
Shortness of Breath	277	10.2%
Syncope/Fainted Now Conscious	60	2.2%
TC-Rescue on the Freeway	29	1.1%
Traffic Collision	152	5.6%
Traffic Collision - Rescue	15	<1.0%
Traffic Collision on the Fwy	61	2.2%
Traffic Collision w/ Pedestrian	45	1.6%
Unknown Medical	50	1.8%
Vehicle Into a Structure	6	<1.0%

SERVICE

INCIDENT TYPE	# INCIDENTS	% OF SERVICE CALLS
Animal Rescue/Assist	1	<1.0%
Arcing Wires	3	1.6%
Bee Investigation	5	2.7%
Biohazard Investigation	8	4.3%
Broken Gas Main	5	2.7%
Broken Water Main	5	2.7%
Chemical Outside	3	1.6%
Damage Investigation	6	3.2%
Elevator Rescue	7	3.7%
Flowing/Gushing/Sheared Hydrant	4	2.1%
Fuel Spill	6	3.2%
Hazardous Materials Response	1	<1.0%
Investigate a Hazardous Condition	15	8.0%
Investigate Overcrowding	1	<1.0%
Major Flooded Condition	8	4.3%
Malfunction	6	3.2%
Minor Flooding	22	11.7%
Misc Odor Investigation	7	3.7%
Misc Response for 1 Engine	4	2.1%
Misc Response for a Truck	1	<1.0%
Misc Response Full Assignment	1	<1.0%
Odor of Natural Gas Inside	11	5.9%
Odor of Natural Gas Outside	6	3.2%
One Story Roof Check	1	<1.0%
PD Assist/Stand-By	6	3.2%
Person Locked In/Locked Out	15	8.0%
Public Assist	4	2.1%
Roof Check 2 Stories & Above	3	1.6%
Wires Down	23	12.2%

MEDICAL

INCIDENT TYPE	# INCIDENTS	% OF MEDICAL CALLS
Abdominal Pain	84	3.1%
Allergic Reaction	8	<1.0%
Altered Level of Consciousness	65	2.4%
Animal/Human/Stings	9	<1.0%
Assault Victim	76	2.8%
Assist the Invalid	35	1.3%
Back Pain	24	<1.0%
Burn Injury	2	<1.0%
Chest Pains - Heart Attack	163	6.0%
CVA-Neurologic	55	2.0%



MONTEREY PARK INCIDENTS BY MONTH AND CATEGORY

CATEGORY	Jul.	Aug.	Sep.	Oct	Nov	Dec	Jan	Feb	Mar	Apr	May	June	TOTAL	TOTAL
FIRE	44	34	40	30	29	36	35	31	33	31	27	30	400	11.4%
MEDICAL	214	210	214	215	233	252	255	231	240	209	226	223	2,722	77.4%
SERVICE	11	20	11	16	13	17	19	14	27	12	14	14	188	5.3%
OTHER	0	0	0	0	0	0	0	0	1	0	0	0	1	0.0%
OVS*	17	13	18	21	12	13	19	17	15	20	24	18	207	5.9%
TOTAL	286	277	283	282	287	318	328	293	316	272	291	285	3,518	

*OVS = Responses Outside the Verdugo System

Out of Jurisdiction Responses

The Monterey Park Fire Department responded to incidents outside their jurisdiction 568 times during FY2006-7:

Alhambra	267	Pasadena	5
Arcadia	1	San Gabriel	81
Burbank	1	San Marino	1
Glendale	1	South Pasadena	4
LA City	2	Other Cities	108
LA County	97	TOTAL	568

Other fire agencies responded to incidents in Monterey Park 473 times during the same time period:

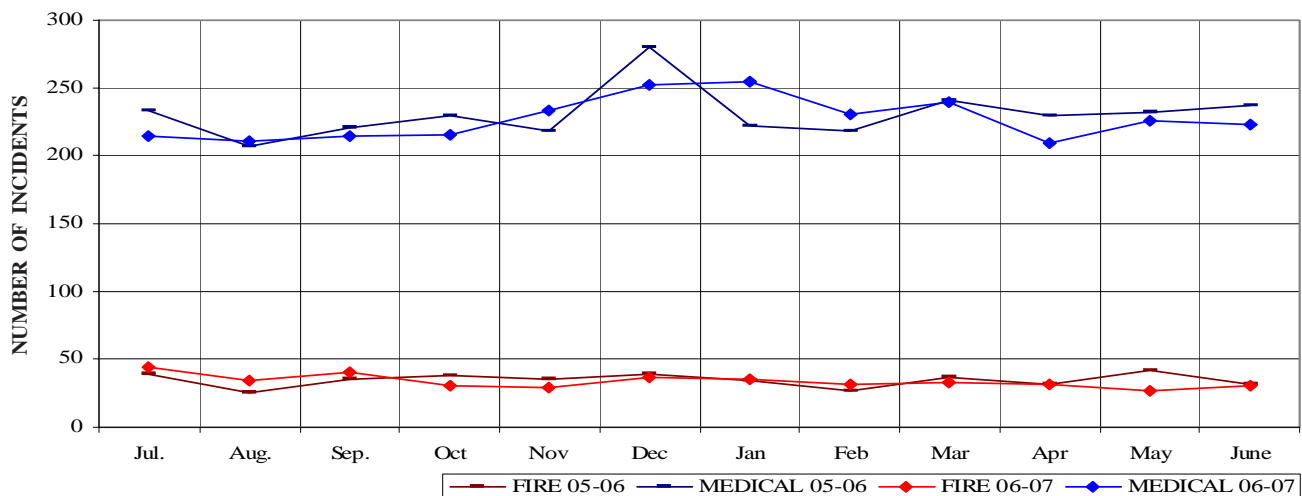
Alhambra	233	Pasadena	27
Arcadia	13	San Gabriel	46
Burbank	3	San Marino	1
Glendale	2	South Pasadena	5
LA County	71	Other*	71
Monrovia	1	TOTAL	473

*These responses are sometimes by private ambulances but may also refer to Montebello units providing aid by agreement.

Responses Per Unit

The Monterey Park Fire Department responded to 3,311 incidents within its city borders and an additional 568 incidents in other jurisdictions. At least two units are dispatched to most incidents.

<u>Unit ID</u>	<u>Responses</u>
Engine 61	1,647
Engine 62	1,222
Engine 63	1,005
Ambulance 61	1,696
Ambulance 62	1,379
Truck 61	484

**MONTEREY PARK FIRE AND MEDICAL INCIDENTS PER MONTH - FY2005-6 vs. FY2006-7**



PASADENA FIRE DEPARTMENT



There were 15,345 incidents reported for Pasadena in fiscal year 2006-7. When an emergency call comes in, the dispatcher determines and enters the most appropriate and descriptive type code into the Computer Assisted Dispatch (CAD) system. Each type code falls within a category: Fire, Medical, Service, or Other. The table below shows how many incidents were entered into the CAD system for Pasadena for each type code in these categories during FY2006-7, along with the percent of incidents in that category for the year. Of the 126 type codes listed below, the three most frequent incident types were Fire Alarm (72.0% of Fire incidents), Shortness of Breath (10.7% of Medical incidents), and Fall - Minor (9.9% of Medical incidents).

FIRE

INCIDENT TYPE	# INCIDENTS	% OF FIRE CALLS
Apartment House Fire	26	<1.0%
Appliance Fire - Major	24	<1.0%
Appliance Fire - Minor	4	<1.0%
Brush Fire	7	<1.0%
Carbon Monoxide Alarm	33	1.1%
Electrical Fire	31	1.1%
Electrical Vault Fire	3	<1.0%
Explosives/BombThreat/Scare	4	<1.0%
Fire Alarm	2116	72.0%
Fire Alarm - Full Assignment	25	<1.0%
Fire Alarm Reset	43	1.5%
Fire Now Out	42	1.4%
Garage Fire	6	<1.0%
House Fire	52	1.8%
Illegal Burning	29	1.0%
Initial Action Response	5	<1.0%
Misc Outside Fire	34	1.2%
Misc Outside Fire on the Fwy	6	<1.0%
Plane Accident, Down or Fire	1	<1.0%
Refuse Fire	56	1.9%
Smoke in a Structure	78	2.7%
Smoke in the Area	72	2.4%
Sprinkler System Activated	7	<1.0%
Structure Fire	41	1.4%
Transformer/Street Light Fire	9	<1.0%
Unknown Type Fire	4	<1.0%
Vegetation Fire	35	1.2%
Vegetation Fire on the Fwy	12	<1.0%
Vehicle Fire	95	3.2%
Vehicle Fire in a Structure	2	<1.0%
Vehicle Fire on the Freeway	37	1.3%

MEDICAL (cont.)

INCIDENT TYPE	# INCIDENTS	% OF MEDICAL CALLS
Diabetic Problem	191	1.6%
Electrical Shock Injury	2	<1.0%
Emer Medical Svc on the Fwy	32	<1.0%
EMS Call - No Details	73	<1.0%
Explosion Seen or Heard	1	<1.0%
Exposure - Heat or Cold	4	<1.0%
Eye Injury	11	<1.0%
Fall - Major	41	<1.0%
Fall - Minor	1154	9.9%
G.I. Bleed	113	1.0%
Gunshot Wound	31	<1.0%
Head Pain	58	<1.0%
Heart Problem	190	1.6%
Ingestion-Poisoning-Inhalation	152	1.3%
Injury TC with Fuel Spill	6	<1.0%
Investigate the Welfare	7	<1.0%
Medical Alarm	77	<1.0%
Minor Trauma	450	3.9%
Misc Medical	838	7.2%
Misc Response Engine & RA	2	<1.0%
Misc Response for 1 RA	1	<1.0%
Mountain Rescue	7	<1.0%
Non-Injury Traffic Collision	9	<1.0%
Nosebleed Non-Traumatic	43	<1.0%
Obstetrics/Gynecological	87	<1.0%
Overdose	162	1.4%
Person Choking	54	<1.0%
Person Dizzy	207	1.8%
Person Down	387	3.3%
Person Hanging	3	<1.0%
Person in Seizure	624	5.4%
Person Not Breathing	229	2.0%
Person Sick	218	1.9%
Person Stabbed	26	<1.0%
Person Threatening to Jump	4	<1.0%
Person Unconscious/Unresponsive	659	5.7%
Psychiatric	172	1.5%
Rescue	6	<1.0%
Severe Trauma	4	<1.0%
Shortness of Breath	1248	10.7%
Syncope/Fainted Now Conscious	223	1.9%
TC-Rescue on the Freeway	47	<1.0%
Traffic Collision	749	6.4%
Traffic Collision - Rescue	84	<1.0%
Traffic Collision on the Fwy	210	1.8%
Traffic Collision w/ Pedestrian	172	1.5%
Unknown Medical	141	1.2%
Vehicle Into a Structure	18	<1.0%

SERVICE

INCIDENT TYPE	# INCIDENTS	% OF SERVICE CALLS
Abandoned Refrigerator	8	1.1%
Animal Rescue/Assist	12	1.6%
Arcing Wires	4	<1.0%
Bee Investigation	7	<1.0%
Biohazard Investigation	22	2.9%
Broken Gas Main	17	2.3%
Broken Water Main	7	<1.0%
Chemical Outside	26	3.5%
Damage Investigation	1	<1.0%
Elevator Rescue	125	16.7%
Flowing/Gushing/Sheared Hydrant	22	2.9%
Fuel Spill	26	3.5%
Hazardous Materials Response	10	1.3%
Investigate a Hazardous Condition	53	7.1%
Investigate a Mudslide	1	<1.0%
Investigate Overcrowding	7	<1.0%
Major Flooded Condition	33	4.4%
Malfunction	31	4.1%
Minor Flooding	33	4.4%
Misc Odor Investigation	53	7.1%
Misc Response for 1 Engine	16	2.1%
Misc Response for a Truck	5	<1.0%
Misc Response Full Assignment	1	<1.0%
Odor of Natural Gas Inside	38	5.1%
Odor of Natural Gas Outside	22	2.9%
One Story Roof Check	13	1.7%
PD Assist/Stand-By	8	1.1%
Person Locked In/Locked Out	67	8.9%
Public Assist	46	6.1%
Roof Check 2 Stories & Above	17	2.3%
Wires Down	18	2.4%

MEDICAL

Abdominal Pain	361	3.1%
Allergic Reaction	59	<1.0%
Altered Level of Consciousness	307	2.6%
Animal/Human/Stings	29	<1.0%
Assault Victim	316	2.7%
Assist the Invalid	133	1.1%
Back Pain	136	1.2%
Building Collapse Rescue	1	<1.0%
Burn Injury	11	<1.0%
Chest Pains - Heart Attack	875	7.5%
Confined Space Rescue	1	<1.0%
CVA-Neurologic	183	1.6%

OTHER

INCIDENT TYPE	# INCIDENTS
Fireworks Violation	12
Health Services/Checkup/Etc.	19
Special Event	18
Transfer to Police Dept	2

PASADENA INCIDENTS BY MONTH AND CATEGORY

CATEGORY	Jul.	Aug.	Sep.	Oct	Nov	Dec	Jan	Feb	Mar	Apr	May	June	TOTAL	TOTAL
FIRE	286	249	251	241	251	303	294	188	233	214	217	212	2,939	19.0%
MEDICAL	1,008	935	941	943	961	1,013	1,044	871	969	969	1,026	943	11,623	75.1%
SERVICE	79	60	56	64	56	65	79	52	64	55	59	55	744	4.8%
OTHER	11	4	4	2	4	3	1	1	2	3	2	2	39	0.3%
OVS*	12	6	10	12	13	11	14	6	8	13	17	19	141	0.9%
TOTAL	1,396	1,254	1,262	1,262	1,285	1,395	1,432	1,118	1,276	1,254	1,321	1,231	15,486	

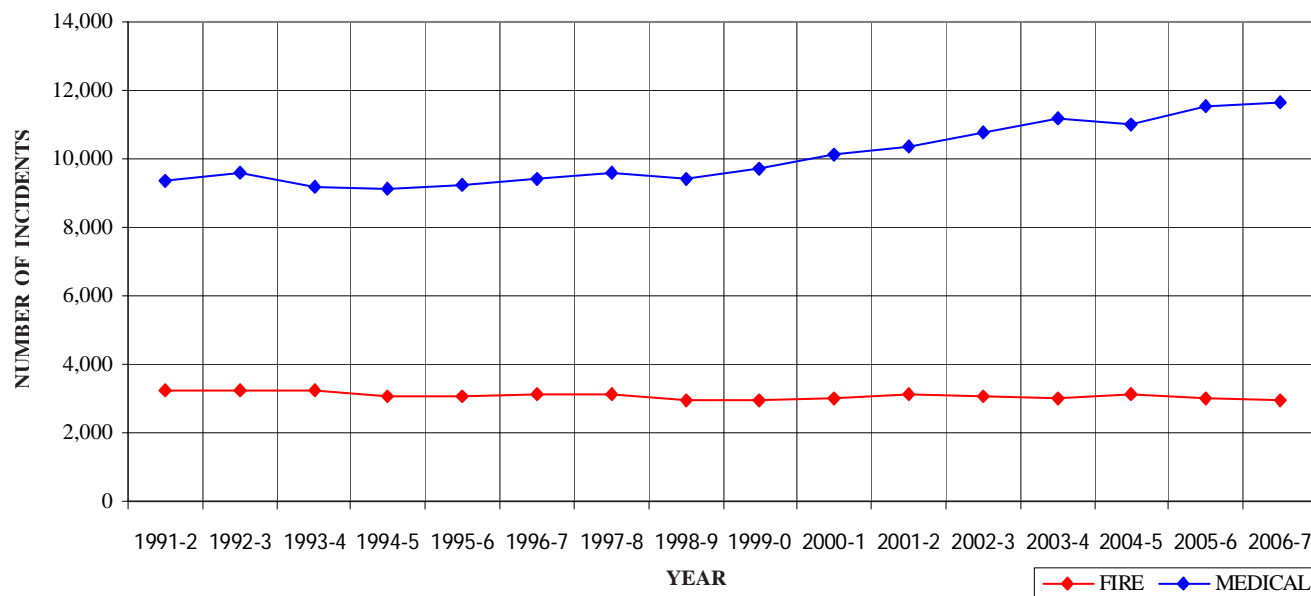
*OVS = Responses Outside the Verdugo System

PASADENA INCIDENTS: 16 FISCAL YEAR HISTORY

	<u>1991-2</u>	<u>1992-3</u>	<u>1993-4</u>	<u>1994-5</u>	<u>1995-6</u>	<u>1996-7</u>	<u>1997-8</u>	<u>1998-9</u>
FIRE	3,256	3,264	3,253	3,034	3,073	3,146	3,090	2,963
MEDICAL	9,340	9,569	9,196	9,139	9,254	9,389	9,574	9,417
SERVICE	770	812	773	833	817	803	759	784
OTHER	2	7	31	107	114	66	37	81
OVS*	0	0	0	0	40	110	42	67
TOTAL	13,368	13,652	13,253	13,113	13,298	13,514	13,502	13,312

	<u>1999-0</u>	<u>2000-1</u>	<u>2001-2</u>	<u>2002-3</u>	<u>2003-4</u>	<u>2004-5</u>	<u>2005-6</u>	<u>2006-7</u>
FIRE	2,962	3,020	3,105	3,065	2,986	3,099	3,013	2,939
MEDICAL	9,731	10,136	10,333	10,745	11,194	10,996	11,526	11,623
SERVICE	789	784	786	739	675	915	766	744
OTHER	96	56	154	125	92	32	20	39
OVS*	66	43	66	97	98	107	103	141
TOTAL	13,644	14,039	14,444	14,771	15,045	15,149	15,428	15,486

PASADENA FIRE AND MEDICAL INCIDENTS: 16 FISCAL YEARS



Out of Jurisdiction Responses

The Pasadena Fire Department responded to incidents outside their jurisdiction 593 times in FY 2006-7:

Alhambra	49
Arcadia	100
Burbank	24
Glendale	57
LA City	55
LA County	84
Monrovia	28
Monterey Park	27
San Gabriel	21
San Marino	57
Sierra Madre	4
South Pasadena	85
Other Cities	2
TOTAL	593

Other agencies responded to incidents in Pasadena 789 times during the year:

Alhambra	25
Arcadia	94
Burbank	31
Glendale	125
LA City	8
LA County	37
Monrovia	12
Monterey Park	5
San Gabriel	6
San Marino	271
Sierra Madre	10
South Pasadena	153
Other*	12
TOTAL	789

*These responses are usually by private ambulances but may also refer to helicopters or other specialized units or responses.

Responses Per Unit

The Pasadena Fire Department responded to 15,345 incidents within its city borders and an additional 593 incidents in other jurisdictions. At least two units are dispatched to most incidents.

<u>Unit ID</u>	<u>Responses</u>	<u>Unit ID</u>	<u>Responses</u>
Engine 31	3,555	Ambulance 31	3,051
Engine 32	1,860	Ambulance 32	2,618
Engine 33	3,317	Ambulance 33	3,566
Engine 34	2,217	Ambulance 34	432
Engine 36	2,960	Ambulance 36	3,110
Engine 37	1,554	Truck 31	1,253
Engine 38	684	Truck 32	893
Engine 39	630	USAR 32	36





SAN GABRIEL FIRE DEPARTMENT



There were 2,020 incidents reported for San Gabriel in fiscal year 2006-7. When an emergency call comes in, the dispatcher determines and enters the most appropriate and descriptive type code into the Computer Assisted Dispatch (CAD) system. Each type code falls within a category: Fire, Medical, Service, or Other. The table below shows how many incidents were entered into the CAD system for San Gabriel for each type code in these categories during FY2006-7, along with the percent of incidents in that category for the year. Of the 99 type codes listed below, the four most frequent incident types were Fire Alarm (59.2% of Fire incidents), Shortness of Breath (13.4% of Medical incidents), Person Unconscious/Unresponsive and Traffic Collision (9.0% of Medical incidents each).

FIRE

INCIDENT TYPE	# INCIDENTS	% OF FIRE CALLS
Apartment House Fire	6	1.9%
Appliance Fire - Major	4	1.3%
Electrical Fire	7	2.2%
Fire Alarm	187	59.2%
Fire Alarm - Full Assignment	1	<1.0%
Fire Now Out	9	2.8%
Garage Fire	1	<1.0%
House Fire	13	4.1%
Illegal Burning	2	<1.0%
Misc Outside Fire	9	2.8%
Refuse Fire	15	4.7%
Smoke in a Structure	9	2.8%
Smoke in the Area	10	3.2%
Sprinkler System Activated	2	<1.0%
Structure Fire	9	2.8%
Transformer/Street Light Fire	6	1.9%
Unknown Type Fire	2	<1.0%
Vegetation Fire	9	2.8%
Vegetation Fire on the Freeway		<1.0%
Vehicle Fire	12	3.8%
Vehicle Fire in a Structure	2	<1.0%
Vehicle Fire on the Freeway	1	<1.0%

MEDICAL (cont.)

INCIDENT TYPE	# INCIDENTS	% OF MEDICAL CALLS
CVA-Neurologic	29	1.8%
Diabetic Problem	49	3.1%
Emer Medical Svc on the Fwy	2	<1.0%
EMS Call - No Details	11	<1.0%
Fall - Major	2	<1.0%
Fall - Minor	138	8.7%
G.I. Bleed	20	1.3%
Gunshot Wound	1	<1.0%
Head Pain	3	<1.0%
Heart Problem	29	1.8%
Ingestion-Poisoning-Inhalation	16	1.0%
Investigate the Welfare	2	<1.0%
Medical Alarm	11	<1.0%
Minor Trauma	56	3.5%
Misc Medical	92	5.8%
Misc Response Engine & RA	1	<1.0%
Non-Injury Traffic Collision	1	<1.0%
Nosebleed Non-Traumatic	3	<1.0%
Obstetrics/Gynecological	6	<1.0%
Overdose	11	<1.0%
Person Choking	7	<1.0%
Person Dizzy	22	1.4%
Person Down	33	2.1%
Person Hanging	3	<1.0%
Person in Seizure	69	4.4%
Person Not Breathing	38	2.4%
Person Sick	25	1.6%
Person Stabbed	8	<1.0%
Person Threatening to Jump	1	<1.0%
Person Unconscious/Unresponsive	143	9.0%
Psychiatric	25	1.6%
Rescue	1	<1.0%
Severe Trauma	1	<1.0%
Shortness of Breath	212	13.4%
Syncope/Fainted Now Conscious	33	2.1%
TC-Rescue on the Freeway	3	<1.0%
Traffic Collision	143	9.0%
Traffic Collision - Rescue	5	<1.0%
Traffic Collision on the Fwy	25	1.6%
Traffic Collision w/ Pedestrian	19	1.2%
Unknown Medical	23	1.5%
Vehicle Into a Structure	4	<1.0%

SERVICE

INCIDENT TYPE	# INCIDENTS	% OF SERVICE CALLS
Animal Rescue/Assist	3	2.5%
Arcing Wires	1	<1.0%
Bee Investigation	2	1.6%
Biohazard Investigation	5	4.1%
Broken Gas Main	2	1.6%
Broken Water Main	5	4.1%
Chemical Outside	6	4.9%
Damage Investigation	1	<1.0%
Elevator Rescue	2	1.6%
Flowing/Gushing/Sheared Hydrant	3	2.5%
Fuel Spill	6	4.9%
Investigate a Hazardous Condition	11	9.0%
Major Flooded Condition	6	4.9%
Malfunction	1	<1.0%
Minor Flooding	10	8.2%
Misc Odor Investigation	7	5.7%
Misc Response for 1 Engine	2	1.6%
Odor of Natural Gas Inside	4	3.3%
Odor of Natural Gas Outside	4	3.3%
One Story Roof Check	4	3.3%
PD Assist/Stand-By	1	<1.0%
Person Locked In/Locked Out	6	4.9%
Public Assist	10	8.2%
Roof Check 2 Stories & Above	4	3.3%
Wires Down	16	13.1%

MEDICAL

INCIDENT TYPE	# INCIDENTS	% OF MEDICAL CALLS
Abdominal Pain	46	2.9%
Allergic Reaction	3	<1.0%
Altered Level of Consciousness	32	2.0%
Animal/Human/Stings	5	<1.0%
Assault Victim	40	2.5%
Assist the Invalid	18	1.1%
Back Pain	17	1.1%
Burn Injury	1	<1.0%
Chest Pains - Heart Attack	95	6.0%
Collapse/Extrication/Rescue	1	<1.0%



SAN GABRIEL INCIDENTS BY MONTH AND CATEGORY

CATEGORY	Jul.	Aug.	Sep.	Oct	Nov	Dec	Jan	Feb	Mar	Apr	May	June	TOTAL	TOTAL
FIRE	39	25	24	21	25	27	30	31	26	26	23	20	317	15.3%
MEDICAL	141	129	119	127	128	138	151	117	141	134	130	127	1,582	76.6%
SERVICE	9	8	4	9	11	9	13	6	21	11	7	12	120	5.8%
OTHER	0	0	1	0	0	0	0	0	0	0	0	0	1	0.0%
OVS*	4	3	4	4	2	4	8	1	4	4	5	3	46	2.2%
TOTAL	193	165	152	161	166	178	202	155	192	175	165	162	2,066	

*OVS = Responses Outside the Verdugo System

Responses Per Unit

The San Gabriel Fire Department responded to 2,020 incidents within its city borders and an additional 301 incidents in other jurisdictions. At least two units are dispatched to most incidents.

Unit ID	Responses
Engine 51	1,244
Engine 52	1,038
Ambulance 51	1,547
USAR 51	2

Out of Jurisdiction Responses

The San Gabriel Fire Department responded to incidents outside their jurisdiction 301 times in FY 2006-7:

Alhambra	157	Monterey Park	46
Arcadia	9	Pasadena	6
LA City	1	San Marino	33
LA County	44	South Pasadena	2
Monrovia	2	Other Cities	1
TOTAL		301	

Other fire agencies responded to incidents in San Gabriel 562 times during the year:

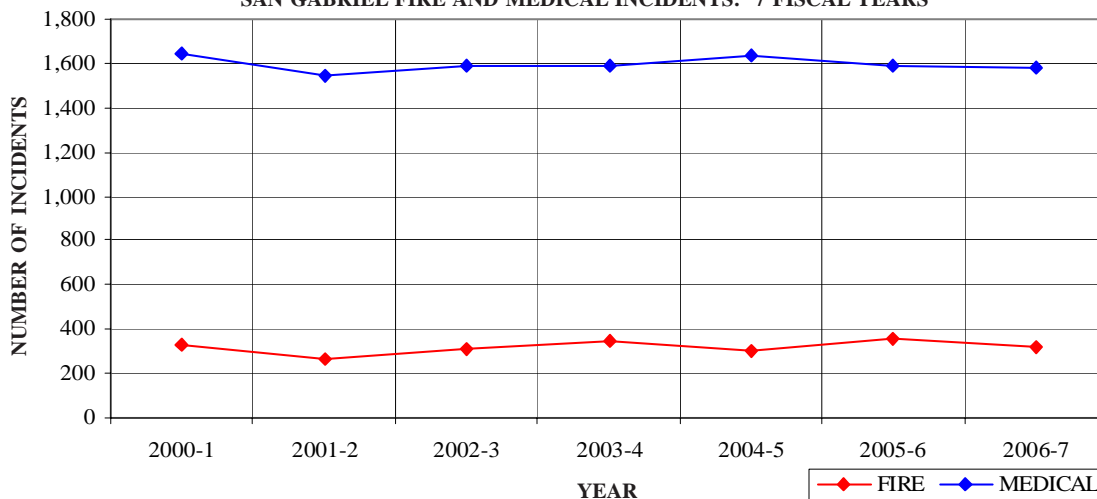
Alhambra	190	Monterey Park	81
Arcadia	27	Pasadena	21
Glendale	3	San Marino	187
LA County	38	South Pasadena	11
Monrovia	2	Other*	2
TOTAL		562	

*These responses are usually by private ambulances but may also refer to helicopters or other specialized units or responses.

SAN GABRIEL INCIDENTS: 7 FISCAL YEAR HISTORY

	2000-1	2001-2	2002-3	2003-4	2004-5	2005-6	2006-7
FIRE	327	261	308	346	300	356	317
MEDICAL	1,646	1,540	1,593	1,594	1,631	1,594	1,582
SERVICE	119	132	101	110	136	105	120
OTHER	3	5	2	7	3	1	1
OVS*	124	130	109	108	107	86	46
TOTAL	2,219	2,068	2,113	2,165	2,177	2,142	2,066

SAN GABRIEL FIRE AND MEDICAL INCIDENTS: 7 FISCAL YEARS





SAN MARINO FIRE DEPARTMENT



There were 838 incidents reported for San Marino in fiscal year 2006-7. When an emergency call comes in, the dispatcher determines and enters the most appropriate and descriptive type code into the Computer Assisted Dispatch (CAD) system. Each type code falls within a category: Fire, Medical, Service, or Other. The table below shows how many incidents were entered into the CAD system for San Marino for each type code in these categories during FY2006-7, along with the percent of incidents in that category for the year. Of the 77 type codes listed below, the three most frequent incident types were Fire Alarm (72.8% of Fire incidents), Fall - Minor (14.4% of Medical incidents), and Traffic Collision (13.0% of Medical incidents).

FIRE

INCIDENT TYPE	# INCIDENTS	% OF FIRE CALLS
Apartment House Fire	1	<1.0%
Appliance Fire - Major	1	<1.0%
Electrical Fire	10	4.6%
Electrical Vault Fire	1	<1.0%
Explosives/BombThreat/Scare	2	<1.0%
Fire Alarm	158	72.8%
Fire Alarm Reset	2	<1.0%
Fire Now Out	3	1.4%
House Fire	4	1.8%
Misc Outside Fire	3	1.4%
Mutual Aid Request	1	<1.0%
Refuse Fire	2	<1.0%
Smoke in a Structure	12	5.5%
Smoke in the Area	2	<1.0%
Structure Fire	1	<1.0%
Transformer/Street Light Fire	3	1.4%
Unknown Type Fire	1	<1.0%
Vegetation Fire	1	<1.0%
Vehicle Fire	9	4.1%

MEDICAL (cont.)

INCIDENT TYPE	# INCIDENTS	% OF MEDICAL CALLS
EMS Call - No Details	9	1.7%
Fall - Major	1	<1.0%
Fall - Minor	78	14.4%
G.I. Bleed	7	1.3%
Heart Problem	5	<1.0%
Ingestion-Poisoning-Inhalation	4	<1.0%
Medical Alarm	7	1.3%
Minor Trauma	30	5.6%
Misc Medical	35	6.5%
Misc Response for 1 RA	1	<1.0%
Nosebleed Non-Traumatic	3	<1.0%
Obstetrics/Gynecological	2	<1.0%
Overdose	5	<1.0%
Person Choking	3	<1.0%
Person Dizzy	11	2.0%
Person Down	8	1.5%
Person in Seizure	18	3.3%
Person Not Breathing	8	1.5%
Person Sick	12	2.2%
Person Unconscious/Unresponsive	43	8.0%
Psychiatric	5	<1.0%
Rescue	3	<1.0%
Shortness of Breath	38	7.0%
Syncope/Fainted Now Conscious	10	1.9%
Traffic Collision	70	13.0%
Traffic Collision - Rescue	5	<1.0%
Traffic Collision w/ Pedestrian	3	<1.0%
Unknown Medical	7	1.3%

SERVICE

INCIDENT TYPE	# INCIDENTS	% OF SERVICE CALLS
Animal Rescue/Assist	1	1.2%
Arcing Wires	1	1.2%
Bee Investigation	3	3.7%
Broken Water Main	3	3.7%
Chemical Outside	2	2.4%
Elevator Rescue	1	1.2%
Fuel Spill	1	1.2%
Investigate a Hazardous Condition	13	15.9%
Major Flooded Condition	2	2.4%
Malfunction	6	7.3%
Minor Flooding	11	13.4%
Misc Odor Investigation	7	8.5%
Misc Response for 1 Engine	1	1.2%
Odor of Natural Gas Inside	6	7.3%
Odor of Natural Gas Outside	3	3.7%
PD Assist/Stand-By	2	2.4%
Person Locked In/Locked Out	5	6.1%
Public Assist	5	6.1%
Wires Down	9	11.0%

MEDICAL

INCIDENT TYPE	# INCIDENTS	% OF MEDICAL CALLS
Abdominal Pain	13	2.4%
Allergic Reaction	5	<1.0%
Altered Level of Consciousness	16	3.0%
Assault Victim	5	<1.0%
Assist the Invalid	20	3.7%
Back Pain	3	<1.0%
Chest Pains - Heart Attack	30	5.6%
CVA-Neurologic	10	1.9%
Diabetic Problem	5	<1.0%
Drowning/Diving Incident	2	<1.0%

OTHER

INCIDENT TYPE	# INCIDENTS
Fireworks Violation	1

SAN MARINO INCIDENTS BY MONTH AND CATEGORY

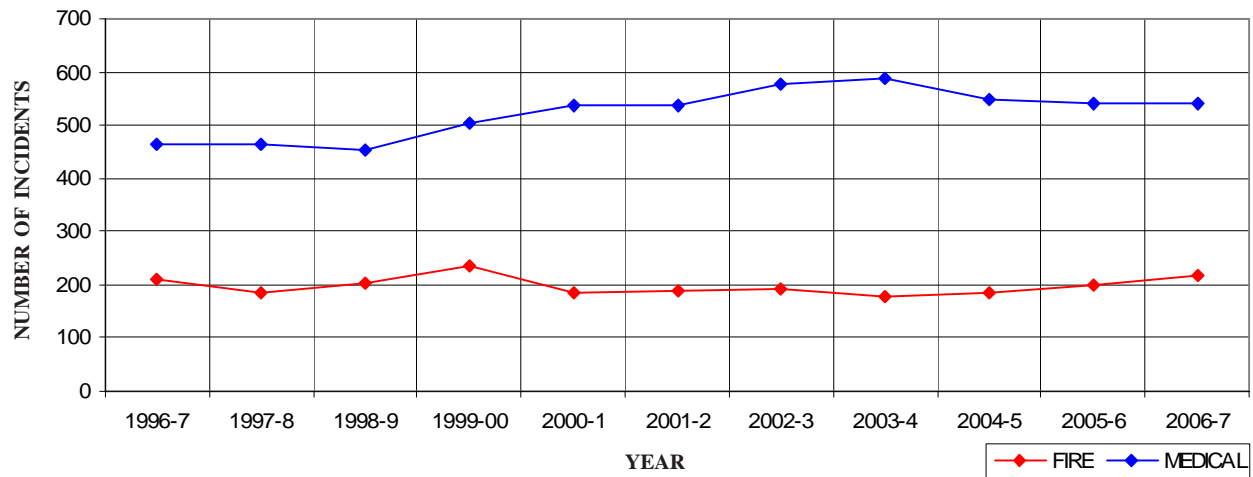
CATEGORY	Jul.	Aug.	Sep.	Oct	Nov	Dec	Jan	Feb	Mar	Apr	May	June	TOTAL	TOTAL
FIRE	19	20	10	18	25	27	25	21	15	7	15	15	217	23.1%
MEDICAL	46	49	33	55	43	48	47	50	44	34	46	45	540	57.4%
SERVICE	11	4	3	4	5	13	17	5	2	10	5	1	80	8.5%
OTHER	1	0	0	0	0	0	0	0	0	0	0	0	1	0.1%
OVS*	10	7	6	10	7	13	8	9	6	11	5	10	102	10.9%
TOTAL	87	80	52	87	80	101	97	85	67	62	71	71	940	

*OVS = Responses Outside the Verdugo System

SAN MARINO INCIDENTS: 11 FISCAL YEARS

	1996-7	1997-8	1998-9	1999-00	2000-1	2001-2	2002-3	2003-4	2004-5	2005-6	2006-7
FIRE	210	184	203	234	186	187	193	177	184	201	217
MEDICAL	465	465	454	503	537	538	575	589	547	542	540
SERVICE	111	114	106	116	118	121	97	71	165	73	80
OTHER	3	1	0	0	1	3	2	7	7	0	1
OVS*	178	220	224	205	117	116	149	120	126	125	102
TOTAL	967	984	987	1,058	959	965	1,016	964	1,029	941	940

SAN MARINO FIRE AND MEDICAL INCIDENTS: 11 FISCAL YEARS

Out of Jurisdiction Responses

The San Marino Fire Department responded to incidents outside their jurisdiction 691 times in FY2006-7:

Alhambra	15	Pasadena	271
Arcadia	9	San Gabriel	187
LA County	100	South Pasadena	102
LA City	1	Other Cities	1
Monrovia	4	TOTAL	691
Monterey Park	1		

Other fire agencies responded to incidents in San Marino 234 times during the year:

Alhambra	32	Sierra Madre	1
Arcadia	19	South Pasadena	61
Burbank	1	Other*	1
LA County	28	TOTAL	234
Monterey Park	1		
Pasadena	57		
San Gabriel	33		

*These responses are usually by private ambulances but may also refer to helicopters or other specialized units or responses.

Responses Per Unit

The San Marino Fire Department responded to 838 incidents within its city borders and an additional 691 incidents in other jurisdictions. At least two units are dispatched to most incidents.

<u>Unit ID</u>	<u>Responses</u>
Engine 91	998
Ambulance 91	1,037



SIERRA MADRE FIRE DEPARTMENT

SIERRA MADRE

There were 760 incidents reported for Sierra Madre in fiscal year 2006-7. When an emergency call comes in, the dispatcher determines and enters the most appropriate and descriptive type code into the Computer Assisted Dispatch (CAD) system. Each type code falls within a category: Fire, Medical, Service, or Other. The table below shows how many incidents were entered into the CAD system for Sierra Madre for each type code in these categories during FY2006-7, along with the percent of incidents in that category for the year. Of the 83 type codes listed below, the three most frequent incident types were Fall - Minor (14.5% of Medical incidents), Shortness of Breath (11.1% of Medical incidents) and Miscellaneous Medical (5.6% of Medical incidents).

FIRE

INCIDENT TYPE	# INCIDENTS	% OF FIRE CALLS
Apartment House Fire	5	4.7%
Appliance Fire - Major	2	1.9%
Electrical Fire	5	4.7%
Explosives/BombThreat/Scare	1	<1.0%
Fire Alarm	26	24.5%
Fire Alarm Reset	2	1.9%
Fire Now Out	3	2.8%
Garage Fire	1	<1.0%
House Fire	5	4.7%
Illegal Burning	5	4.7%
Misc Outside Fire	4	3.8%
Refuse Fire	1	<1.0%
Smoke in a Structure	5	4.7%
Smoke in the Area	24	22.6%
Transformer/Street Light Fire	9	8.5%
Unknown Type Fire	2	1.9%
Vegetation Fire	3	2.8%
Vehicle Fire	3	2.8%

MEDICAL (cont.)

INCIDENT TYPE	# INCIDENTS	% OF MEDICAL CALLS
CVA-Neurologic	14	2.5%
Diabetic Problem	13	2.3%
EMS Call - No Details	8	1.4%
Exposure - Heat or Cold	1	<1.0%
Fall - Major	1	<1.0%
Fall - Minor	81	14.5%
G.I. Bleed	2	<1.0%
Head Pain	2	<1.0%
Heart Problem	10	1.8%
Ingestion-Poisoning-Inhalation	9	1.6%
Investigate the Welfare	2	<1.0%
Medical Alarm	5	<1.0%
Minor Trauma	28	5.0%
Misc Medical	31	5.6%
Misc Response Engine & RA	1	<1.0%
Mountain Rescue	5	<1.0%
Nosebleed Non-Traumatic	1	<1.0%
Obstetrics/Gynecological	4	<1.0%
Overdose	9	1.6%
Person Choking	3	<1.0%
Person Dizzy	11	2.0%
Person Down	9	1.6%
Person Hanging	1	<1.0%
Person in Seizure	19	3.4%
Person Not Breathing	11	2.0%
Person Sick	14	2.5%
Person Unconscious/Unresponsive	30	5.4%
Psychiatric	6	1.1%
Rescue	1	<1.0%
Shortness of Breath	62	11.1%
Syncope/Fainted Now Conscious	11	2.0%
Traffic Collision	14	2.5%
Traffic Collision - Rescue	3	<1.0%
Traffic Collision w/ Pedestrian	6	1.1%
Unknown Medical	4	<1.0%

SERVICE

INCIDENT TYPE	# INCIDENTS	% OF SERVICE CALLS
Arcing Wires	5	5.2%
Bee Investigation	2	2.1%
Biohazard Investigation	1	1.0%
Broken Gas Main	2	2.1%
Broken Water Main	4	4.1%
Chemical Outside	1	1.0%
Flowing/Gushing/Sheared Hydrant	4	4.1%
Hazardous Materials Response	2	2.1%
Investigate a Hazardous Condition	12	12.4%
Major Flooded Condition	6	6.2%
Malfunction	6	6.2%
Minor Flooding	5	5.2%
Misc Odor Investigation	7	7.2%
Odor of Natural Gas Inside	4	4.1%
Odor of Natural Gas Outside	8	8.2%
PD Assist/Stand-By	1	1.0%
Person Locked In/Locked Out	2	2.1%
Public Assist	9	9.3%
Wires Down	16	16.5%

MEDICAL

INCIDENT TYPE	# INCIDENTS	% OF MEDICAL CALLS
Abdominal Pain	24	4.3%
Allergic Reaction	2	<1.0%
Altered Level of Consciousness	16	2.9%
Animal/Human/Stings	8	1.4%
Assault Victim	14	2.5%
Assist the Invalid	20	3.6%
Back Pain	12	2.2%
Burn Injury	1	<1.0%
Chest Pains - Heart Attack	29	5.2%

OTHER

INCIDENT TYPE	# INCIDENTS
Fireworks Violation	1
Special Event	1

SIERRA MADRE INCIDENTS BY MONTH AND CATEGORY

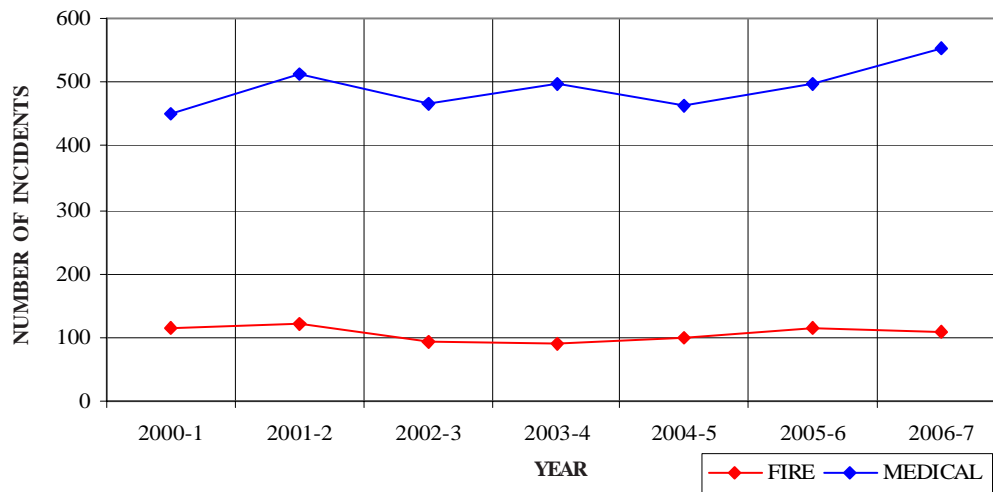
CATEGORY	Jul.	Aug.	Sep.	Oct	Nov	Dec	Jan	Feb	Mar	Apr	May	June	TOTAL	TOTAL
FIRE	17	8	7	5	9	11	12	11	9	10	5	6	110	14.2%
MEDICAL	53	34	40	47	41	51	42	55	60	38	47	45	553	71.5%
SERVICE	9	10	8	9	8	13	10	2	10	7	4	5	95	12.3%
OTHER	1	0	0	0	0	0	0	0	0	0	1	0	2	0.3%
OVS*	3	0	4	2	0	1	0	1	1	0	1	0	13	1.7%
TOTAL	83	52	59	63	58	76	64	69	80	55	58	56	773	

*OVS = Responses Outside the Verdugo System

SIERRA MADRE INCIDENTS: 7 FISCAL YEARS

	<u>2000-1</u>	<u>2001-2</u>	<u>2002-3</u>	<u>2003-4</u>	<u>2004-5</u>	<u>2005-6</u>	<u>2006-7</u>
FIRE	116	120	92	91	100	114	110
MEDICAL	452	512	467	497	464	498	553
SERVICE	107	97	136	70	81	114	95
OTHER	2	3	4	6	3	2	2
OVS*	3	14	12	7	3	6	13
TOTAL	680	746	711	671	651	734	773

SIERRA MADRE FIRE AND MEDICAL INCIDENTS: 7 FISCAL YEARS

**Out of Jurisdiction Responses**

The Sierra Madre Fire Department responded to incidents outside their jurisdiction 24 times in FY 2005-6:

LA County	6
Pasadena	10
San Marino	1
Other Cities	7
TOTAL	24

Other agencies responded to incidents in Sierra Madre 17 times during the year.

Arcadia	4
Burbank	1
Glendale	1
Monrovia	2
LA County	4
Pasadena	4
South Pasadena	1
TOTAL	17

**Responses Per Unit**

The Sierra Madre Fire Department responded to 760 incidents within its city borders and an additional 24 incidents in other jurisdictions. A typical response is one or two units.

<u>Unit ID</u>	<u>Responses</u>
Engine 41	245
Ambulance 41	754
Water Tender 41	1



SOUTH PASADENA FIRE DEPARTMENT



There were 1,516 incidents reported for South Pasadena in fiscal year 2006-7. When an emergency call comes in, the dispatcher determines and enters the most appropriate and descriptive type code into the Computer Assisted Dispatch (CAD) system. Each type code falls within a category: Fire, Medical, Service, or Other. The table below shows how many incidents were entered into the CAD system for South Pasadena for each type code in these categories during FY2006-7, along with the percent of incidents in that category for the year. Of the 97 type codes listed below, the three most frequent incident types were Fire Alarm (56.5% of Fire incidents), Fall - Minor (11.1% of Medical incidents), and Traffic Collision (10.3% of Medical incidents).

FIRE

INCIDENT TYPE	# INCIDENTS	% OF FIRE CALLS
Apartment House Fire	3	1.1%
Appliance Fire - Major	7	2.5%
Appliance Fire - Minor	1	<1.0%
Brush Fire	2	<1.0%
Carbon Monoxide Alarm	1	<1.0%
Electrical Fire	5	1.8%
Fire Alarm	156	56.5%
Fire Alarm - Full Assignment	3	1.1%
Fire Alarm Reset	4	1.4%
Fire Now Out	2	<1.0%
Garage Fire	1	<1.0%
House Fire	4	1.4%
Illegal Burning	7	2.5%
Misc Outside Fire	9	3.3%
Refuse Fire	7	2.5%
Smoke in a Structure	9	3.3%
Smoke in the Area	18	6.5%
Structure Fire	4	1.4%
Transformer/Street Light Fire	8	2.9%
Unknown Type Fire	2	<1.0%
Vegetation Fire	7	2.5%
Vegetation Fire on the Fwy	3	1.1%
Vehicle Fire	10	3.6%
Vehicle Fire in a Structure	1	<1.0%
Vehicle Fire on the Freeway	2	<1.0%

MEDICAL (cont.)

INCIDENT TYPE	# INCIDENTS	% OF MEDICAL CALLS
Electrical Shock Injury	2	<1.0%
Emer Medical Svc on the Fwy	2	<1.0%
EMS Call - No Details	7	<1.0%
Fall - Major	4	<1.0%
Fall - Minor	119	11.1%
G.I. Bleed	7	<1.0%
Gunshot Wound	1	<1.0%
Head Pain	3	<1.0%
Heart Problem	16	1.5%
Ingestion-Poisoning-Inhalation	6	<1.0%
Medical Alarm	7	<1.0%
Minor Trauma	46	4.3%
Misc Medical	55	5.1%
Non-Injury Traffic Collision	1	<1.0%
Nosebleed Non-Traumatic	5	<1.0%
Obstetrics/Gynecological	6	<1.0%
Overdose	16	1.5%
Person Choking	1	<1.0%
Person Dizzy	21	2.0%
Person Down	37	3.4%
Person in Seizure	44	4.1%
Person Not Breathing	22	2.0%
Person Sick	21	2.0%
Person Stabbed	3	<1.0%
Person Unconscious/Unresponsive	86	8.0%
Psychiatric	14	1.3%
Rescue	2	<1.0%
Shortness of Breath	83	7.7%
Syncope/Fainted Now Conscious	27	2.5%
TC-Rescue on the Freeway	6	<1.0%
Traffic Collision	111	10.3%
Traffic Collision - Rescue	4	<1.0%
Traffic Collision on the Fwy	18	1.7%
Traffic Collision w/ Pedestrian	27	2.5%
Unknown Medical	9	<1.0%
Vehicle Into a Structure	1	<1.0%

SERVICE

INCIDENT TYPE	# INCIDENTS	% OF SERVICE CALLS
Abandoned Refrigerator	4	2.4%
Animal Rescue/Assist	1	<1.0%
Arcing Wires	4	2.4%
Bee Investigation	2	1.2%
Biohazard Investigation	8	4.8%
Broken Gas Main	4	2.4%
Broken Water Main	10	6.0%
Chemical Outside	8	4.8%
Damage Investigation	2	1.2%
Elevator Rescue	6	3.6%
Flowing/Gushing/Sheared Hydrant	2	1.2%
Fuel Spill	12	7.1%
Investigate a Hazardous Condition	15	8.9%
Major Flooded Condition	5	3.0%
Malfunction	5	3.0%
Minor Flooding	12	7.1%
Misc Odor Investigation	11	6.5%
Misc Response for 1 Engine	2	1.2%
Odor of Natural Gas Inside	8	4.8%
Odor of Natural Gas Outside	11	6.5%
One Story Roof Check	1	<1.0%
PD Assist/Stand-By	3	1.8%
Person Locked In/Locked Out	15	8.9%
Public Assist	6	3.6%
Wires Down	11	6.5%

MEDICAL

INCIDENT TYPE	# INCIDENTS	% OF MEDICAL CALLS
Abdominal Pain	36	3.3%
Allergic Reaction	5	<1.0%
Altered Level of Consciousness	22	2.0%
Animal/Human/Stings	9	<1.0%
Assault Victim	18	1.7%
Assist the Invalid	23	2.1%
Back Pain	16	1.5%
Chest Pains - Heart Attack	64	6.0%
CVA-Neurologic	27	2.5%
Diabetic Problem	14	1.3%
Drowning/Diving Incident	1	<1.0%



SOUTH PASADENA INCIDENTS BY MONTH AND CATEGORY

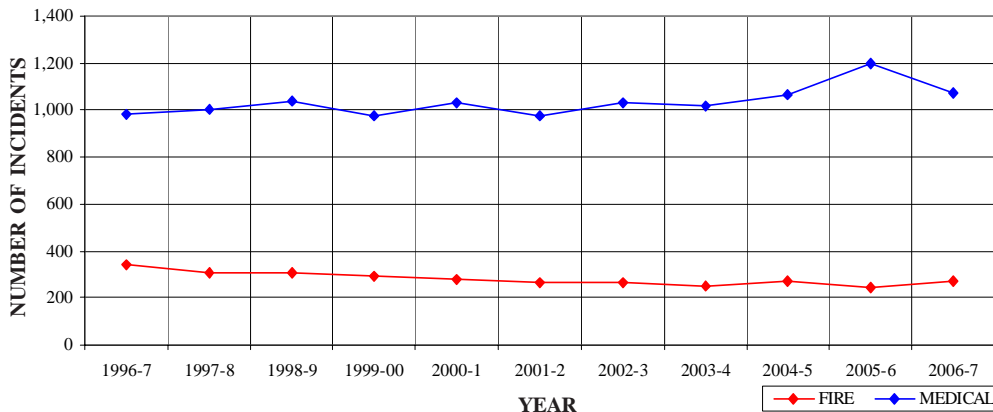
CATEGORY	Jul.	Aug.	Sep.	Oct	Nov	Dec	Jan	Feb	Mar	Apr	May	June	TOTAL	TOTAL
FIRE	26	35	24	18	22	23	23	14	18	24	22	26	275	18.0%
MEDICAL	97	79	94	77	105	100	98	86	87	81	84	84	1,072	70.3%
SERVICE	16	11	11	14	8	24	26	13	18	14	2	11	168	11.0%
OTHER	0	0	0	0	1	0	0	0	0	0	0	0	1	0.1%
OVS*	1	1	1	1	1	2	0	0	1	0	0	0	8	0.5%
TOTAL	140	126	130	110	137	149	147	113	124	119	108	121	1,524	

*OVS = Responses Outside of the Verdugo System

SOUTH PASADENA INCIDENTS: 11 FISCAL YEAR HISTORY

	1996-7	1997-8	1998-9	1999-00	2000-1	2001-2	2002-3	2003-4	2004-5	2005-6	2006-7
FIRE	339	303	308	294	281	266	268	251	271	247	275
MEDICAL	984	1,004	1,040	974	1,031	977	1,033	1,018	1,069	1,197	1,072
SERVICE	233	166	149	149	173	191	204	172	231	144	168
OTHER	2	3	1	3	2	3	7	10	11	2	1
OVS*	23	33	38	41	52	48	71	51	43	32	8
TOTAL	1,581	1,509	1,536	1,461	1,539	1,485	1,583	1,502	1,625	1,622	1,524

SOUTH PASADENA FIRE AND MEDICAL INCIDENTS: 11 FISCAL YEARS

**Responses Per Unit**

The South Pasadena Fire Department responded to 1,516 incidents within its city borders and an additional 280 incidents in other jurisdictions. At least two units are dispatched to most incidents.

Unit ID	Responses
Air Utility 81	237
Engine 81	1,584
Ambulance 81	1,122

Out of Jurisdiction Responses

The South Pasadena Fire Department responded to incidents outside their jurisdiction 280 times in FY 2006-7:

Alhambra	34
Arcadia	3
Burbank	1
Glendale	1
LA City	7
LA County	1
Monrovia	2
Monterey Park	5
Pasadena	153
San Gabriel	11
San Marino	61
Sierra Madre	1
TOTAL	280

Other fire agencies responded to incidents in South Pasadena 307 times during the year:

Alhambra	94
Arcadia	2
Glendale	2
LA City	14
Monterey Park	4
Pasadena	85
San Gabriel	2
San Marino	102
Other*	2
TOTAL	307

*These responses are usually by private ambulances but may also refer to helicopters or other specialized units or responses.

Appendix A

INCIDENT TYPE CODES - Alphabetical

CODE	INCIDENT TYPE	CATEGORY	CODE	INCIDENT TYPE	CATEGORY	CODE	INCIDENT TYPE	CATEGORY
ABD	Abdominal Pain	Medical	ENGRA	Misc Response Engine & RA	Medical	PLANE	Plane Accident, Down or Fire	Fire
ADV	Non-Dispatched Advised Call	Other	ENGTRK	Misc Response Engine & Truck	Service	POLE	Transformer/Street Light Fire	Fire
ALARM	Fire Alarm	Fire	EQUIP	Equipment Maintenance	Other	PSYCH	Psychiatric	Medical
ALARMF	Fire Alarm - Full Assignment	Fire	EVENT	Special Event	Other	PUBED	Public Education Detail	Other
ALERGY	Allergic Reaction	Medical	EXPLO	Explosion Seen or Heard	Medical	PUBLIC	Public Assist	Service
ALERT1	Airport Alert 1 - Stand By	Fire	EXPOS	Exposure - Heat or Cold	Medical	RA	Misc Response for 1 RA	Medical
ALERT2	Emergency Landing at Airport	Fire	EYE	Eye Injury	Medical	RADIO	Radio Service	Other
ALERT3	Plane Accident, Down or Fire	Fire	FALL1	Fall - Major	Medical	RAIL	Train Fire	Fire
ALOC	Altered Level of Consciousness	Medical	FALL2	Fall - Minor	Medical	REFRIG	Abandoned Refrigerator	Service
ANIMAL	Animal Rescue/Assist	Service	FD	Transfer to Another Fire Dept	Other	REFUSE	Refuse Fire	Fire
APPL1	Appliance Fire - Major	Fire	FIRETR	Fire Training	Other	RESCUE	Rescue	Medical
APPL2	Appliance Fire - Minor	Fire	FLOOD	Major Flooded Condition	Service	RESET	Fire Alarm Reset	Fire
APT	Apartment House Fire	Fire	FLOW	Sprinkler System Activated	Fire	RESFWY	TC-Rescue on the Freeway	Medical
ARC	Arcing Wires	Service	FNO	Fire Now Out	Fire	RESTOK	RA Restocking at Hospital	Other
ARSON	Arson Investigation	Fire	FUEL	Fuel Spill	Service	ROOF1	One Story Roof Check	Service
ASLT	Assault Victim	Medical	FULL	Misc Response Full Assignment	Service	ROOF2	Roof Check 2 Stories & Above	Service
BACK	Back Pain	Medical	FULLRA	Misc Full Assignment & RA	Medical	SCHOOL	School Presentation	Other
BEEES	Bee Investigation	Service	FWORKS	Fireworks Violation	Other	SEIZ	Person in Seizure	Medical
BIO	Biohazard Investigation	Service	GARAGE	Garage Fire	Fire	SHOCK	Electrical Shock Injury	Medical
BITE	Animal/Human/Stings	Medical	GASI	Odor of Natural Gas Inside	Service	SICK	Person Sick	Medical
BOMB	Explosives/BombThreat/Scare	Fire	GASO	Odor of Natural Gas Outside	Service	SMOKEI	Smoke in a Structure	Fire
BREATH	Shortness of Breath	Medical	GIB	G.I. Bleed	Medical	SMOKEO	Smoke in the Area	Fire
BRUSH	Brush Fire	Fire	GMAIN	Broken Gas Main	Service	STAB	Person Stabbed	Medical
BRUSHF	Brush Fire	Fire	GSW	Gunshot Wound	Medical	STR	Structure Fire	Fire
BST1	Brush Strike team-XLC-1201A	Fire	HANG	Person Hanging	Medical	STROKE	CVA-Neurologic	Medical
BST10	Brush Strike Team-Misc Equip	Fire	HAZARD	Investigate a Hazardous Condition	Service	SWR	Swift Water Rescue	Medical
BST2	Brush Strike Team-XLC-1202A	Fire	HAZMAT	Hazardous Materials Response	Service	SYNCO	Syncopal/Fainted Now Conscious	Medical
BST3	Brush Strike Team-XLC-1203A	Fire	HEADPN	Head Pain	Medical	TC	Traffic Collision	Medical
BST4	Brush Strike Team-XLC-1204A	Fire	HEALTH	Health Services/Checkup/Etc.	Other	TCFUEL	Injury TC with Fuel Spill	Medical
BST5	Brush Strike Team-XLC-1205A	Fire	HEART	Heart Problem	Medical	TCFWY	Traffic Collision on the Fwy	Medical
BST6	Brush Strike Team-XLC-1206A	Fire	HOUSE	House Fire	Fire	TCNON	Non-Injury Traffic Collision	Medical
BST7	Brush Strike Team-XLC-1207A	Fire	HYD	Flowing/Gushing/Sheared Hydrant	Service	TCPED	Traffic Collision w/ Pedestrian	Medical
BST8	Brush Strike Team-XLC-1208A	Fire	IA	Initial Action Response	Fire	TCRAIL	Traffic Collision w/ Train	Medical
BST9	Brush Strike Team-XLC-1209A	Fire	ILLEG	Illegal Burning	Fire	TCRES	Traffic Collision - Rescue	Medical
BSTMIX	Brush Strike Team - Mixed Area	Fire	INSP	Inspection	Other	TCSTR	Vehicle Into a Structure	Medical
BSTOES	OES Engine Strike Team	Fire	INVL	Assist the Invalid	Medical	TEST	Fire Alarm Testing	Other
BUILD	Building Collapse Rescue	Medical	JUMPER	Person Threatening to Jump	Medical	THREAT	Bio-Chemical Threat	Service
BURN	Burn Injury	Medical	LAW	PD Assist/Stand-By	Service	TOXIC	Ingestion-Poisoning-Inhalation	Medical
CADTST	CAD Station Alerting Testing	Other	LOCK	Person Locked In/Locked Out	Service	TR1	Severe Trauma	Medical
CARBON	Carbon Monoxide Alarm	Fire	LOGON	Logon Out-of-Service	Other	TR2	Minor Trauma	Medical
CE	Continuing Education	Other	LUNCH	Lunch Time	Other	TRAIN	Misc Training	Other
CHEMO	Chemical Outside	Service	MALF	Malfunction	Service	TRENCH	Trench Rescue	Medical
CHEST	Chest Pains - Heart Attack	Medical	MANPWR	Insufficient Manpower	Other	TRK	Misc Response for a Truck	Service
CHGOVR	Vehicle Change Over	Other	MECH	Mechanical Problem	Other	UNCON	Person Unconscious/Unresponsive	Medical
CHOK	Person Choking	Medical	MED	Misc Medical	Medical	UNKF	Unknown Type Fire	Fire
CHP	Transfer to CHP	Other	MEDALR	Medical Alarm	Medical	UNKMED	Unknown Medical	Medical
CONFIN	Confined Space Rescue	Medical	MTNRES	Mountain Rescue	Medical	USAR	Collapse/Extrication/Rescue	Medical
CROWD	Investigate Overcrowding	Service	MUD	Investigate a Mudslide	Service	VAULT	Electrical Vault Fire	Fire
DAMAGE	Damage Investigation	Service	MUTUAL	Mutual Aid Request	Fire	VEG	Vegetation Fire	Fire
DEMO	Fire Extinguisher Demo	Other	NOSE	Nosebleed Non-Traumatic	Medical	VEGFWY	Vegetation Fire on the Freeway	Fire
DERAIL	Train Derailment	Fire	NOTBR	Person Not Breathing	Medical	VEH	Vehicle Fire	Fire
DETAIL	Misc. Detail	Other	NOTIF	Misc Notification	Other	VEHFWY	Vehicle Fire on the Freeway	Fire
DIAB	Diabetic Problem	Medical	OBGYN	Obstetrics/Gynecological	Medical	VEHSTR	Vehicle Fire in a Structure	Fire
DIZZY	Person Dizzy	Medical	OD	Overdose	Medical	VERIFY	Address Verification	Other
DOWN	Person Down	Medical	ODOR	Misc Odor Investigation	Service	VMAINT	Vehicle Maintenance	Other
DRILL	Drill	Other	OOS	Generic Out of Service	Other	WATER	Minor Flooding	Service
DROWN	Drowning/Diving Incident	Medical	OUT	Misc Outside Fire	Fire	WELFAR	Investigate the Welfare	Medical
ELECF	Electrical Fire	Fire	OUTAGE	Power Outage	Other	WIRES	Wires Down	Service
ELEV	Elevator Rescue	Service	OUTFWY	Misc Outside Fire on the Fwy	Fire	WMAIN	Broken Water Main	Service
EMS	EMS Call - No Details	Medical	OVERHD	Overhead Mutual Aid Request	Fire	WMD	Weapons Mass Destr. Event	Medical
EMSFWY	Emer Medical Svc on the Fwy	Medical	PD	Transfer to Police Dept	Other	WT	Water Tender Request	Fire
ENG	Misc Response for 1 Engine	Service	PERSON	Person on Fire	Fire	WTOES	OES Water Tender Request	Fire

Appendix B

INCIDENT TYPE CODES - By Category

CODE	INCIDENT TYPE	CATEGORY	CODE	INCIDENT TYPE	CATEGORY	CODE	INCIDENT TYPE	CATEGORY
ALARM	Fire Alarm	Fire	BUILD	Building Collapse Rescue	Medical	CE	Continuing Education	Other
ALARMF	Fire Alarm - Full Assignment	Fire	BURN	Burn Injury	Medical	CHGOVR	Vehicle Change Over	Other
ALERT1	Airport Alert 1 - Stand By	Fire	CHEST	Chest Pains - Heart Attack	Medical	CHP	Transfer to CHP	Other
ALERT2	Emergency Landing at Airport	Fire	CHOK	Person Choking	Medical	DEMO	Fire Extinguisher Demo	Other
ALERT3	Plane Accident, Down or Fire	Fire	CONFIN	Confined Space Rescue	Medical	DETAIL	Misc. Detail	Other
APPL1	Appliance Fire - Major	Fire	DIAB	Diabetic Problem	Medical	DRILL	Drill	Other
APPL2	Appliance Fire - Minor	Fire	DIZZY	Person Dizzy	Medical	EQUIP	Equipment Maintenance	Other
APT	Apartment House Fire	Fire	DOWN	Person Down	Medical	EVENT	Special Event	Other
ARSON	Arson Investigation	Fire	DROWN	Drowning/Diving Incident	Medical	FD	Transfer to Another Fire Dept	Other
BOMB	Explosives/BombThreat/Scare	Fire	EMS	EMS Call - No Details	Medical	FIRETR	Fire Training	Other
BRUSH	Brush Fire	Fire	EMSFY	Emer Medical Svc on the Fwy	Medical	FWORKS	Fireworks Violation	Other
BRUSHF	Brush Fire	Fire	ENGR	Misc Response Engine & RA	Medical	HEALTH	Health Services/Checkup/Etc.	Other
BST1	Brush Strike team-XLC-1201A	Fire	EXPLO	Explosion Seen or Heard	Medical	INSP	Inspection	Other
BST10	Brush Strike Team-Misc Equip	Fire	EXPOS	Exposure - Heat or Cold	Medical	LOGON	Logon Out-of-Service	Other
BST2	Brush Strike Team-XLC-1202A	Fire	EYE	Eye Injury	Medical	LUNCH	Lunch Time	Other
BST3	Brush Strike Team-XLC-1203A	Fire	FALL1	Fall - Major	Medical	MANPWR	Insufficient Manpower	Other
BST4	Brush Strike Team-XLC-1204A	Fire	FALL2	Fall - Minor	Medical	MECH	Mechanical Problem	Other
BST5	Brush Strike Team-XLC-1205A	Fire	FULLRA	Misc Full Assignment & RA	Medical	NOTIF	Misc Notification	Other
BST6	Brush Strike Team-XLC-1206A	Fire	GB	G.I. Bleed	Medical	OOS	Generic Out of Service	Other
BST7	Brush Strike Team-XLC-1207A	Fire	GSW	Gunshot Wound	Medical	OUTAGE	Power Outage	Other
BST8	Brush Strike Team-XLC-1208A	Fire	HANG	Person Hanging	Medical	PD	Transfer to Police Dept	Other
BST9	Brush Strike Team-XLC-1209A	Fire	HEADPN	Head Pain	Medical	PUBED	Public Education Detail	Other
BSTMIX	Brush Strike Team - Mixed Area	Fire	HEART	Heart Problem	Medical	RADIO	Radio Service	Other
BSTOES	OES Engine Strike Team	Fire	INVL	Assist the Invalid	Medical	RESTOK	RA Restocking at Hospital	Other
CARBON	Carbon Monoxide Alarm	Fire	JUMPER	Person Threatening to Jump	Medical	SCHOOL	School Presentation	Other
DERAIL	Train Derailment	Fire	MED	Misc Medical	Medical	TEST	Fire Alarm Testing	Other
ELECF	Electrical Fire	Fire	MEDALR	Medical Alarm	Medical	TRAIN	Misc Training	Other
FLOW	Sprinkler System Activated	Fire	MTNRES	Mountain Rescue	Medical	VERIFY	Address Verification	Other
FNO	Fire Now Out	Fire	NOSE	Nosebleed Non-Traumatic	Medical	VMANT	Vehicle Maintenance	Other
GARAGE	Garage Fire	Fire	NOTBR	Person Not Breathing	Medical	ANIMAL	Animal Rescue/Assist	Service
HOUSE	House Fire	Fire	OBYGN	Obstetrics/Gynecological	Medical	ARC	Arcing Wires	Service
IA	Initial Action Response	Fire	OD	Overdose	Medical	BEEES	Bee Investigation	Service
ILLEG	Illegal Burning	Fire	PSYCH	Psychiatric	Medical	BIO	Biohazard Investigation	Service
MUTUAL	Mutual Aid Request	Fire	RA	Misc Response for 1 RA	Medical	CHEMO	Chemical Outside	Service
OUT	Misc Outside Fire	Fire	RESCUE	Rescue	Medical	CROWD	Investigate Overcrowding	Service
OUTFWY	Misc Outside Fire on the Fwy	Fire	RESFWY	TC-Rescue on the Freeway	Medical	DAMAGE	Damage Investigation	Service
OVERHD	Overhead Mutual Aid Request	Fire	SEIZ	Person in Seizure	Medical	ELEV	Elevator Rescue	Service
PERSON	Person on Fire	Fire	SHOCK	Electrical Shock Injury	Medical	ENG	Misc Response for 1 Engine	Service
PLANE	Plane Accident, Down or Fire	Fire	SICK	Person Sick	Medical	ENGTRK	Misc Response Engine & Truck	Service
POLE	Transformer/Street Light Fire	Fire	STAB	Person Stabbed	Medical	FLOOD	Major Flooded Condition	Service
RAIL	Train Fire	Fire	STROKE	CVA-Neurologic	Medical	FUEL	Fuel Spill	Service
REFUSE	Refuse Fire	Fire	SWR	Swift Water Rescue	Medical	FULL	Misc Response Full Assignment	Service
RESET	Fire Alarm Reset	Fire	SYNCO	Syncope/Fainted Now Conscious	Medical	GASI	Odor of Natural Gas Inside	Service
SMOKEI	Smoke in a Structure	Fire	TC	Traffic Collision	Medical	GASO	Odor of Natural Gas Outside	Service
SMOKEO	Smoke in the Area	Fire	TCFUEL	Injury TC with Fuel Spill	Medical	GMAIN	Broken Gas Main	Service
STR	Structure Fire	Fire	TCFWY	Traffic Collision on the Fwy	Medical	HAZARD	Investigate a Hazardous Condition	Service
UNKF	Unknown Type Fire	Fire	TCNON	Non-Injury Traffic Collision	Medical	HAZMAT	Hazardous Materials Response	Service
VAULT	Electrical Vault Fire	Fire	TCPED	Traffic Collision w/ Pedestrian	Medical	HYD	Flowing/Gushing/Sheared Hydrant	Service
VEG	Vegetation Fire	Fire	TCRAIL	Traffic Collision w/ Train	Medical	LAW	PD Assist/Stand-By	Service
VEGFWY	Vegetation Fire on the Freeway	Fire	TCRES	Traffic Collision - Rescue	Medical	LOCK	Person Locked In/Locked Out	Service
VEH	Vehicle Fire	Fire	TCSTR	Vehicle Into a Structure	Medical	MALF	Malfunction	Service
VEHFWY	Vehicle Fire on the Freeway	Fire	TOXIC	Ingestion-Poisoning-Inhalation	Medical	MUD	Investigate a Mudslide	Service
VEHSTR	Vehicle Fire in a Structure	Fire	TR1	Severe Trauma	Medical	ODOR	Misc Odor Investigation	Service
WT	Water Tender Request	Fire	TR2	Minor Trauma	Medical	PUBLIC	Public Assist	Service
WTOES	OES Water Tender Request	Fire	TRENCH	Trench Rescue	Medical	REFRIG	Abandoned Refrigerator	Service
ABD	Abdominal Pain	Medical	UNCON	Person Unconscious/Unresponsive	Medical	ROOF1	One Story Roof Check	Service
ALLERGY	Allergic Reaction	Medical	UNKMED	Unknown Medical	Medical	ROOF2	Roof Check 2 Stories & Above	Service
ALOC	Altered Level of Consciousness	Medical	USAR	Collapse/Extrication/Rescue	Medical	THREAT	Bio-Chemical Threat	Service
ASLT	Assault Victim	Medical	WELFAR	Investigate the Welfare	Medical	TRK	Misc Response for a Truck	Service
BACK	Back Pain	Medical	WMD	Weapons Mass Destr. Event	Medical	WATER	Minor Flooding	Service
BITE	Animal/Human/Stings	Medical	ADV	Non-Dispatched Advised Call	Other	WIRES	Wires Down	Service
BREATH	Shortness of Breath	Medical	CADTST	CAD Station Alerting Testing	Other	WMAIN	Broken Water Main	Service

