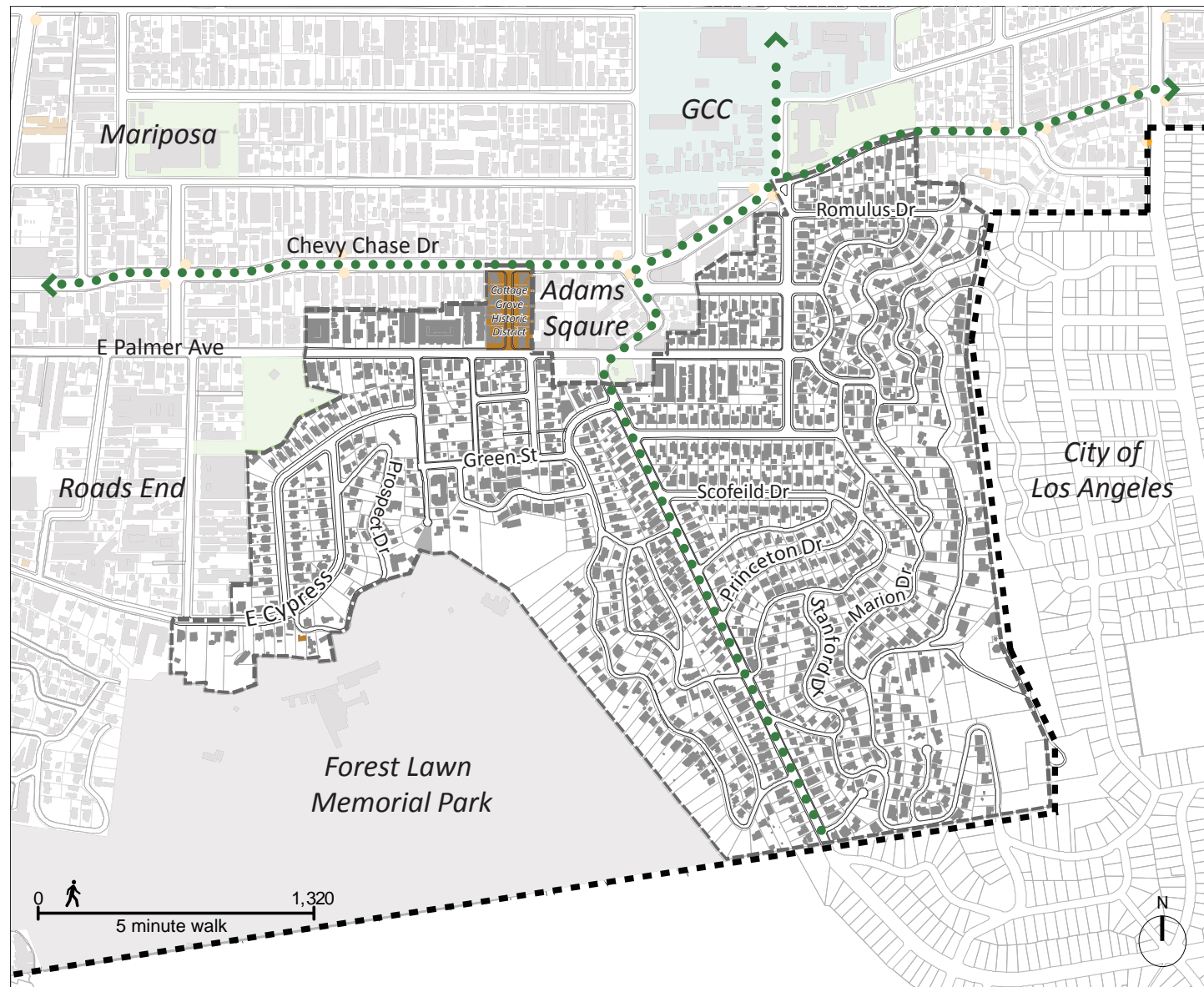


Adams Hill

The Adams Hill neighborhood borders the City of Los Angeles and is located generally south of Palmer Avenue and west of Palmer Park. This area consists of predominantly single-family houses with some moderate-density apartments and condominiums located at the base of the hill. Most of Adams Hill and the housing stock developed during the first half of the 20th century. It consists of an electric mix of good quality buildings of varied styles. Cottage Grove is a designated historic district.



- Legend**
- Civic
 - Open Space
 - Pipeline Projects
 - Glendale Register
 - Historic District
 - Neighborhood Boundary
 - Arterial/Freeway
 - Metro 15 Minute Route
 - Bicycle Path
 - Terminating Vistas
 - Bus Stops
 - Train Station
 - ✦ Gateways
 - ✦ Design Elements
 - ◇ Vision Viewpoint

Statistics

Developable Area	142 ac.	Residential Units	Commercial	Office Space	Industrial	Institutional	
Population	3,500	Apartments	589	0 SF	General Office	0 SF	0 SF
% of COG Pop.	1.8%	Condominiums	78		Medical Office	0 SF	
% of SGCP Pop.	3.9%	Single Family	730				



1 Neighborhood View



2 Neighborhood Street View



3 Neighborhood Home



4 Neighborhood Landscape