

South Glendale Avenue

(North of Palmer)

South Glendale Avenue is a major thoroughfare generally located between Broadway and Cerritos Avenue. Consisting of two portions, north of Palmer Avenue and south of Palmer Avenue. It is one of the oldest commercial areas in the City, predominantly 1-to 3-story commercial buildings are built and accessed from the sidewalk with no or substandard parking. Stores are locally-serving and cater to surrounding multi-family residential development. Portions of this corridor are tree-lined and shady, encouraging walking.

Statistics

Developable Area	20 ac.	Residential Units		Commercial	Office Space	Industrial	Institutional
Population	420	Apartments	164	190,340 SF	General Office 8,820 SF	6,780 SF	32,720 SF
% of COG Pop.	0.2%	Condominiums	0		Medical Office 57,880 SF		
% of SGCP Pop.	0.5%	Single Family	3				



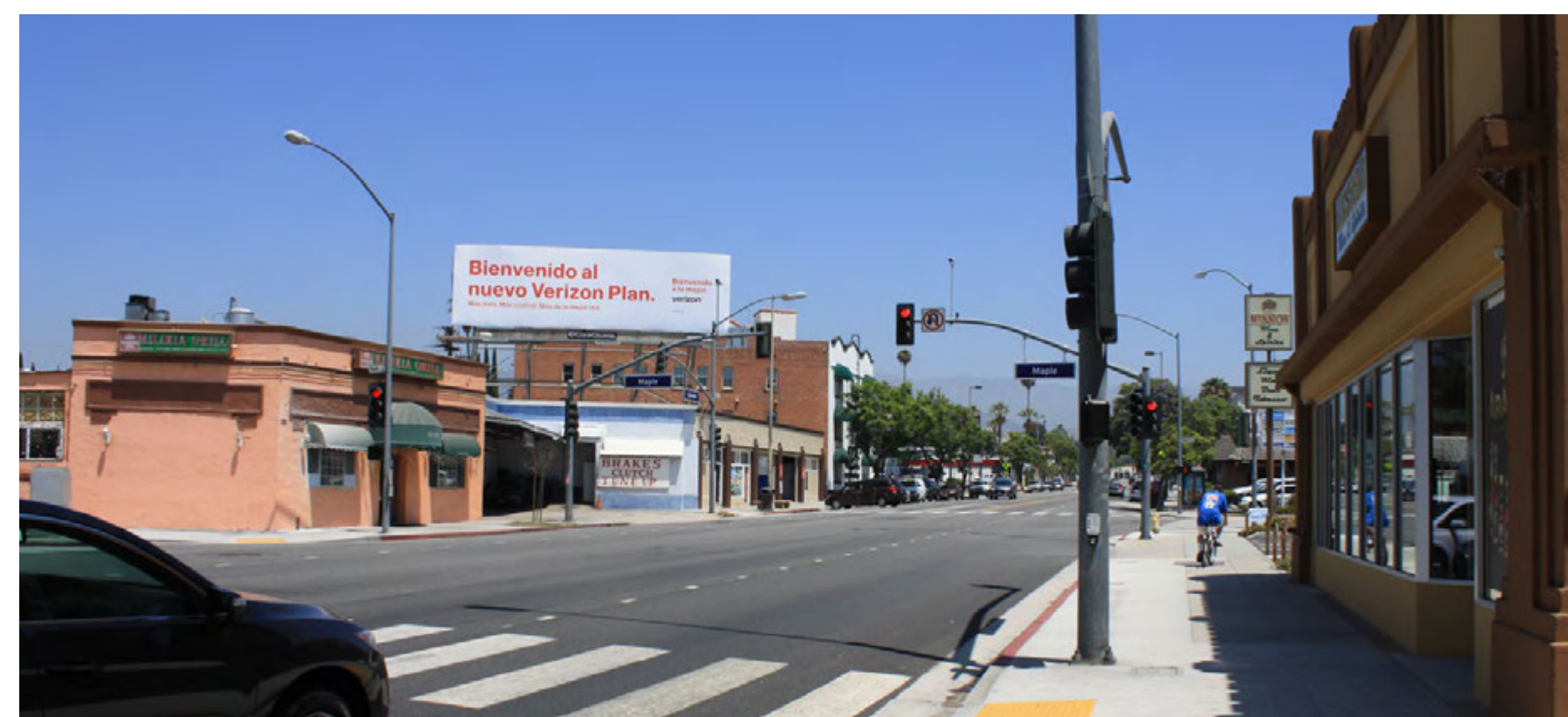
1 Glendale / Lomita



3 Glendale / Windsor



5 South Glendale Sidewalk



2 Glendale / Maple



4 Glendale / Raleigh



6 Glendale / Chevy Chase

- Legend**
- Civic
 - Neighborhood Boundary
 - Bus Stops
 - Open Space
 - Arterial/Freeway
 - Ⓜ Train Station
 - Metro 15 Minute Route
 - ✳ Gateways
 - Bicycle Path
 - ✳ Design Elements
 - Terminating Vistas
 - Historic District
 - ⬠ Vision Viewpoint