

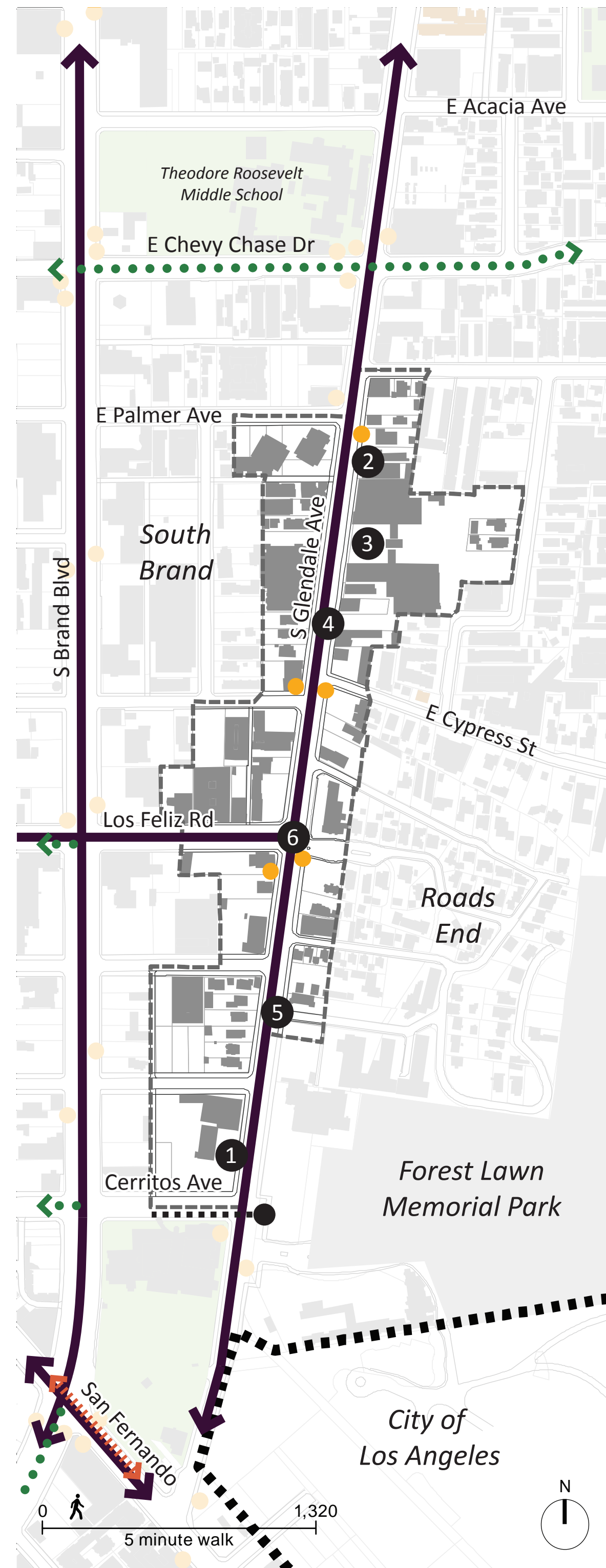
# South Glendale Avenue

(South of Palmer)

South Glendale Avenue between Palmer and Cerritos Avenue also contains many 1- to 3-story commercial buildings built to the sidewalk. Stores are locally-serving and cater to the surrounding single-family and multi-family residential development. Portions of this corridor are tree-lined and shady, encouraging walking.

## Statistics

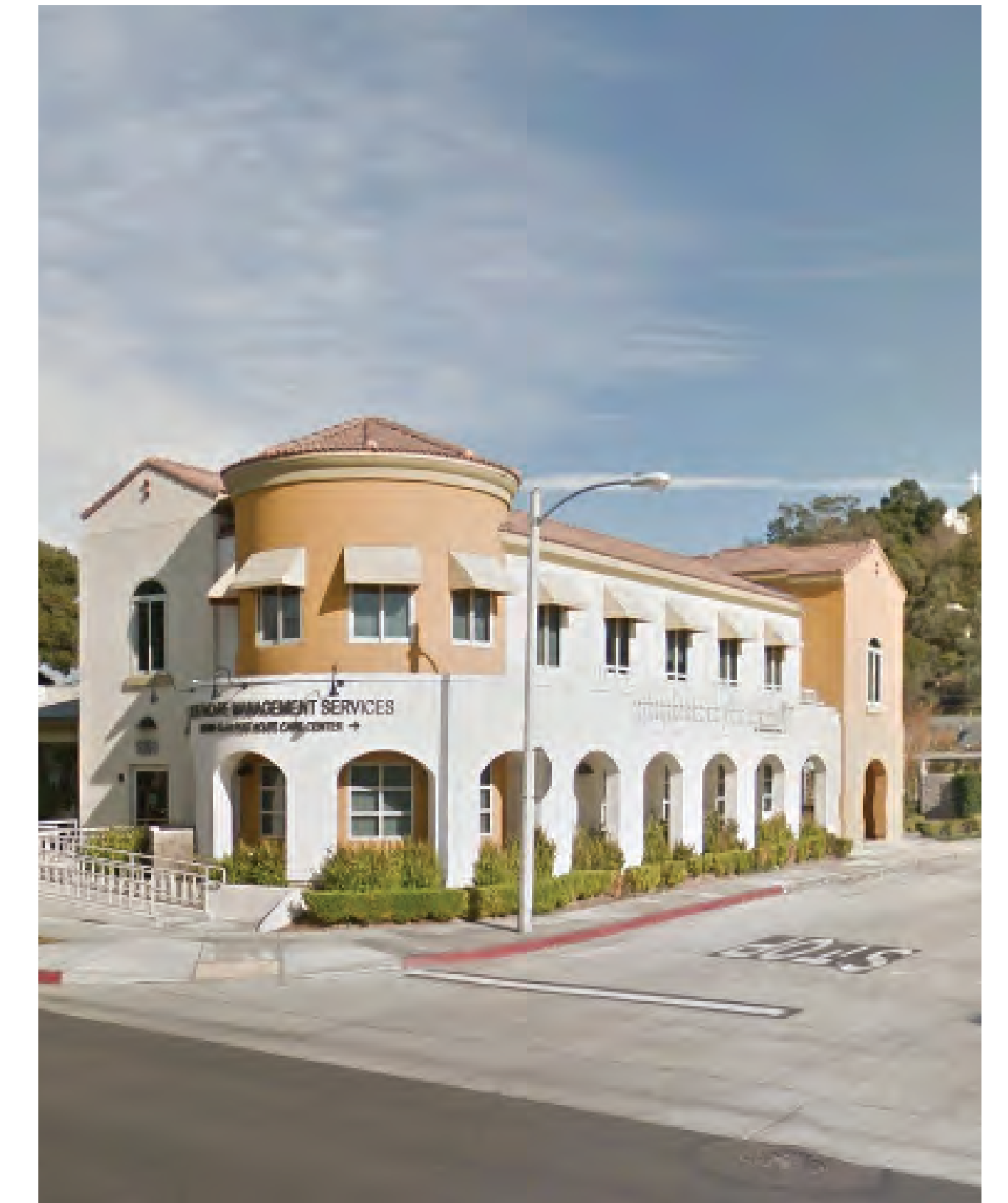
Developable Area	20 ac.	Residential Units		Commercial	Office Space		Industrial	Institutional
		Apartments	88		General Office	6,870 SF		
Population	240	Condominiums	0	102,960 SF	Medical Office	17,940 SF	70,230 SF	19,260 SF
% of COG Pop.	0.1%	Single Family	7					
% of SGCP Pop.	0.3%							



1 Faith Center Church



3 Plaza Ararat



5 Healthcare Management Services



2 Glendale Avenue Storefronts

### Legend

- Civic
- Open Space
- Pipeline Projects
- Glendale Register
- Historic District
- Neighborhood Boundary
- Arterial/Freeway
- Metro 15 Minute Route
- Bicycle Path
- Terminating Vistas
- Bus Stops
- Train Station
- ✦ Gateways
- ✦ Design Elements
- ✦ Vision Viewpoint



4 New v.s. Old



6 Glendale / Cerritos