



## NOTICE OF PREPARATION AND SCOPING MEETING

Date: December 15, 2016

To: See Attached Mailing List

From: City of Glendale  
633 East Broadway, Room 103  
Glendale, California 91206

### **Subject: Notice of Preparation of a Draft Environmental Impact Report and Public Scoping Meeting for the Grayson Repowering Project**

The City of Glendale, as Lead Agency (per CEQA Guidelines Section 15052), has requested that an Environmental Impact Report (per CEQA Guidelines Section 15161) be prepared for the Glendale Water and Power Grayson Repowering Project. The City of Glendale Department of Water and Power solicits the views of your agency as to the scope and content of the environmental information which is germane to your agency's statutory responsibilities in connection with the proposed project. Your agency will need to use the EIR prepared by our agency when considering your permit or other approvals of the project.

The project description, location, and the potential environmental effects are described in the attached materials. A copy of the Initial Study is attached. Due to the time limits mandated by state law, your response must be sent at the earliest possible time but not later than 30 days after receipt of this notice.

Please send your response to Erik Krause, Interim Deputy Director, Community Development Department, 633 East Broadway, Room 103 Glendale, California 91206. You may also email your response to: [ekrause@glendaleca.gov](mailto:ekrause@glendaleca.gov)

Please provide the name of a contact person at your agency.

Date: \_\_\_\_\_

Signature: \_\_\_\_\_

Name: \_\_\_\_\_

Title: \_\_\_\_\_

Reference: California Administrative Code, Title 14 (State CEQA Guidelines), Sections 15082(a), 15103, 15375.

## **PROJECT LOCATION**

The Project site is located in an industrial area of the City of Glendale at 800 Air Way, Glendale, CA 91201, just northeast of the Interstate 5 and Highway 134 interchange (Figures 1 and 2). The site is bounded to the south by the Verdugo Wash and Highway 134, to the west by the Los Angeles River and Interstate 5, to the north by commercial properties and to the east by commercial and residential properties. The site is currently used as the Grayson Power Plant. The approximate coordinates of the Project are 34° 09' 19" N and 118° 16' 42" W. The Project will be located entirely within the existing Grayson Power Plant, an operating power plant.

## **PROJECT DESCRIPTION**

The City of Glendale, Department of Water and Power (City) is proposing to repower the Grayson Power Plant. A majority of the equipment and related facilities located at the Grayson Power Plant, with the exception of Unit 9 (a simple cycle peaking plant built in 2003), were completed between 1941 and 1977, and are proposed to be replaced with more reliable, efficient, flexible, and cleaner units. The City is proposing to replace all the existing generation equipment and related facilities and infrastructure, with the exception of Unit 9, by removing existing aboveground and belowground equipment, and facilities and building and installing new generation units/equipment and facilities. This includes demolishing the Grayson Power Plant Boiler Building, replacing Cooling Towers 1 through 5, and replacing the generation units, designated as Unit 8A and 8B/C (Figure 3). The existing generation facilities (with the exception of Unit 9) would be replaced with a combination of combined cycle and simple cycle gas turbine generation units (Figure 4).

## **DISCRETIONARY APPROVAL ACTIONS**

Discretionary approval from the City of Glendale and South Coast Air Quality Management District (SCAQMD) would be necessary for implementation of the Project and may include, but not be limited to, the following:

- Design Review
- SCAQMD Permit to Construct/Operate

## **PROBABLE ENVIRONMENTAL EFFECTS**

Based on a preliminary review of the Project consistent with Section 15060 of the California Environmental Quality Act (CEQA) Guidelines, the Glendale Department of Water and Power has determined that an EIR should be prepared for this Project. In addition, consistent with Section 15082 of the State CEQA Guidelines, the Glendale Department of Water and Power has identified the following potential environmental effects of the Project, which will be addressed in the EIR for this Project:

- Aesthetics
- Air Quality
- Geology and Soils
- Greenhouse Gases
- Hazards and Hazardous Materials
- Noise
- Transportation and Traffic
- Tribal Cultural Resources
- Hydrology/Water Quality

The City of Glendale Water and Power Department has determined that there is not a likelihood of potentially significant effects related to the following environmental topics. The EIR will include information on why these effects were determined not to be significant and are not addressed in detail in the EIR:

- Agriculture/Forestry Resources
- Land Use and Planning
- Mineral Resources
- Population/Housing
- Recreation
- Utilities and Services Systems
- Biological Resources
- Public Services
- Cultural Resources
- Environmental Justice
- Socioeconomics

## **SCOPING MEETING**

The City of Glendale Water and Power Department will conduct a public scoping meeting to solicit input and comments from public agencies and the general public on the scope of the EIR being prepared for the Grayson Repowering Project on **Thursday, January 12, 2017**. This meeting will be held at **Griffith Manor Park located at 1551 Flower Street in Glendale, California 91201**. This meeting will be held both at **12:00 PM** and at **6:00 PM**.

The meeting will be an open house format and interested parties may attend to review the proposed project exhibits and submit written comments. Representatives from the City of Glendale Water and Power Department will be available to address questions regarding the proposed project.

The Glendale Water and Power Department will consider comments received in response to this Notice of Preparation in determining the scope and content of the EIR for this Project. Any comments provided should identify specific topics of environmental concern and your reason for suggesting the study of these topics in the EIR. Please provide your comments by **January 20, 2017**.

Please provide your comments in writing to:

Erik Krause  
Interim Deputy Director  
Community Development Department  
633 East Broadway, Room 103  
Glendale, California 91206  
[ekrause@glendaleca.gov](mailto:ekrause@glendaleca.gov)

Thank you for your participation in the environmental review of this Project.

## MAILING LIST

5628039016  
5832 SAN FERNANDO RD  
GLENDALE, CA 91202-2742

5628039010  
5820 SAN FERNANDO  
RD GLENDALE, CA 91202-  
2719

5628039007  
5816 SAN FERNANDO RD  
GLENDALE, CA 91202-2719

5627025905  
811 AIR WAY  
GLENDALE, CA 91201-3026

5627025001  
923 AIR WAY  
GLENDALE, CA 91201-3001

TONGVA ANCESTRAL  
TERRITORIAL TRIBAL NATION  
4712 ADMIRALTY WAY,  
SUITE 172  
MARINA DEL REY, CA  
90292

NATIVE AMERICAN  
HERITAGE COMMISSION  
915 CAPITOL MALL, ROOM  
364  
SACRAMENTO, CA 95814

5628039017  
5830 SAN FERNANDO RD  
GLENDALE, CA 91202-  
2742

5628039018  
5838 SAN FERNANDO RD  
GLENDALE, CA 91202-  
2700

5627027055  
920 AIR WAY  
GLENDALE, CA 91201-  
3028

5627025903  
807 AIR WAY  
GLENDALE, CA 91201-  
3026

STATE CLEARINGHOUSE  
OFFICE OF PLANNING  
AND RESEARCH  
P.O. BOX 3044  
SACRAMENTO, CA 95812-  
3044

METROPOLITAN  
TRANSPORTATION  
AUTHORITY  
ONE GATEWAY PLAZA  
LOS ANGELES, CA 90012

LA CITY/COUNTY NATIVE  
AMERICAN INDIAN  
COMMUNITY  
3175 WEST 6<sup>TH</sup> STREET, RM  
403  
LOS ANGELES, CA 90020

5628039001  
5800 SAN FERNANDO RD  
GLENDALE, CA 91202-2739

5627027064  
777 FLOWER ST  
GLENDALE, CA 91201-3015

5627025016  
911 AIR WAY  
GLENDALE, CA 91201-3001

5627025002  
915 AIR WAY  
GLENDALE, CA 91201-3001

U. S. FISH & WILDLIFE  
SERVICE  
6010 HIDDEN VALLEY RD  
CARLSBAD, CA 92011

DEPARTMENT OF  
TRANSPORTATION DISTRICT  
7, REGIONAL PLANNING  
100 MAIN STREET  
LOS ANGELES, CA 90012

GABRIELENO/TONOVA SAN  
GABRIEL BAND OF MISSION  
PO BOX 693  
SAN GABRIEL, CA 91778



SOUTHERN CALIFORNIA  
EDISON  
14799 CHESTNUT STREET  
WESTMINISTER, CA 92683

SOUTHERN CALIFORNIA  
ASSOCIATION OF  
GOVERNMENTS  
818 WEST SEVENTH STREET,  
12<sup>TH</sup> FLOOR  
LOS ANGELES, CA 90017

DEPARTMENT OF FISH AND  
GAME  
SOUTH COAST REGION  
4949 VIEWRIDGE AVENUE  
SAN DIEGO, CA 92123

REGIONAL WATER QUALITY  
CONTROL BOARD  
320 WEST FOURTH STREET,  
SUITE 200  
LOS ANGELES, CA 90013

GLENDALE WATER AND  
POWER  
141 N. GLENDALE AVE  
GLENDALE, CA 91206

GLENDALE PUBLIC WORKS  
DEPARTMENT  
633 E BROADWAY #209  
GLENDALE, CA 91206

CITY OF BURBANK  
275 E. OLIVE AVE  
BURBANK, CA 91502

CITY OF LOS ANGELES  
200 N. SPRING STREET  
LOS ANGELES, CA 90012

CITY OF PASADENA  
100 GARFIELD AVE.  
PASADENA, CA 91101

LOS ANGELES DEPARTMENT  
OF WATER AND POWER  
111 HOPE STREET  
LOS ANGELES, CA 90012

ENVIRONMENTAL  
PROTECTION AGENCY  
75 HAWTHORNE STREET  
SAN FRANCISCO, CA  
94105

CALIFORNIA AIR RESOURCES  
BOARD  
9528 TELSTAR AVE  
EL MONTE, CA 91731

U.S. ARMY CORPS OF  
ENGINEERS  
LOS ANGELES DISTRICT  
915 WILSHIRE BLVD.  
LOS ANGELES, CA 90017

SOUTHERN CALIFORNIA  
EDISON GAS COMPANY  
P.O. BOX 800  
ROSEMEAD, CA 91770

BOB HOPE AIRPORT  
2627 N HOLLYWOOD WAY  
BURBANK, CA 91505

DISNEY IMAGINEERING  
1401 FLOWER STREET  
GLENDALE, CA 91201

DREAMWORKS  
ANIMATION  
1000 FLOWER STREET  
GLENDALE, CA 91201

CALIFORNIA ENERGY  
COMMISSION  
1516 NINTH STREET  
SACRAMENTO, CA 95814

CALIFORNIA UNIONS FOR  
RELIABLE ENERGY  
601 GATEWAY BLVD.  
SUITE 1000  
S. SAN FRANCISCO, CA  
94080

SOUTH COAST AIR  
QUALITY MANAGEMENT  
DISTRICT  
21865 COPLEY DRIVE  
DIAMOND BAR, CA 91765

DEPARTMENT OF TOXIC  
SUBSTANCES CONTROL  
P.O. BOX 806  
SACRAMENTO, CA 95812-  
0806

FERNANDENO TATAVIAM  
BAND OF MISSION INDIANS  
1019 SECOND STREET  
SAN FERNANDO, CA 91340

SOBOBA BAND OF  
LUISENO INDIANS  
PO BOX 487  
SAN JACINTO, CA 92581

LOS ANGELES COUNTY  
CLERK  
12400 IMPERIAL HIGHWAY  
NORWALK, CA 90650-1208





Figure 2 Project Location

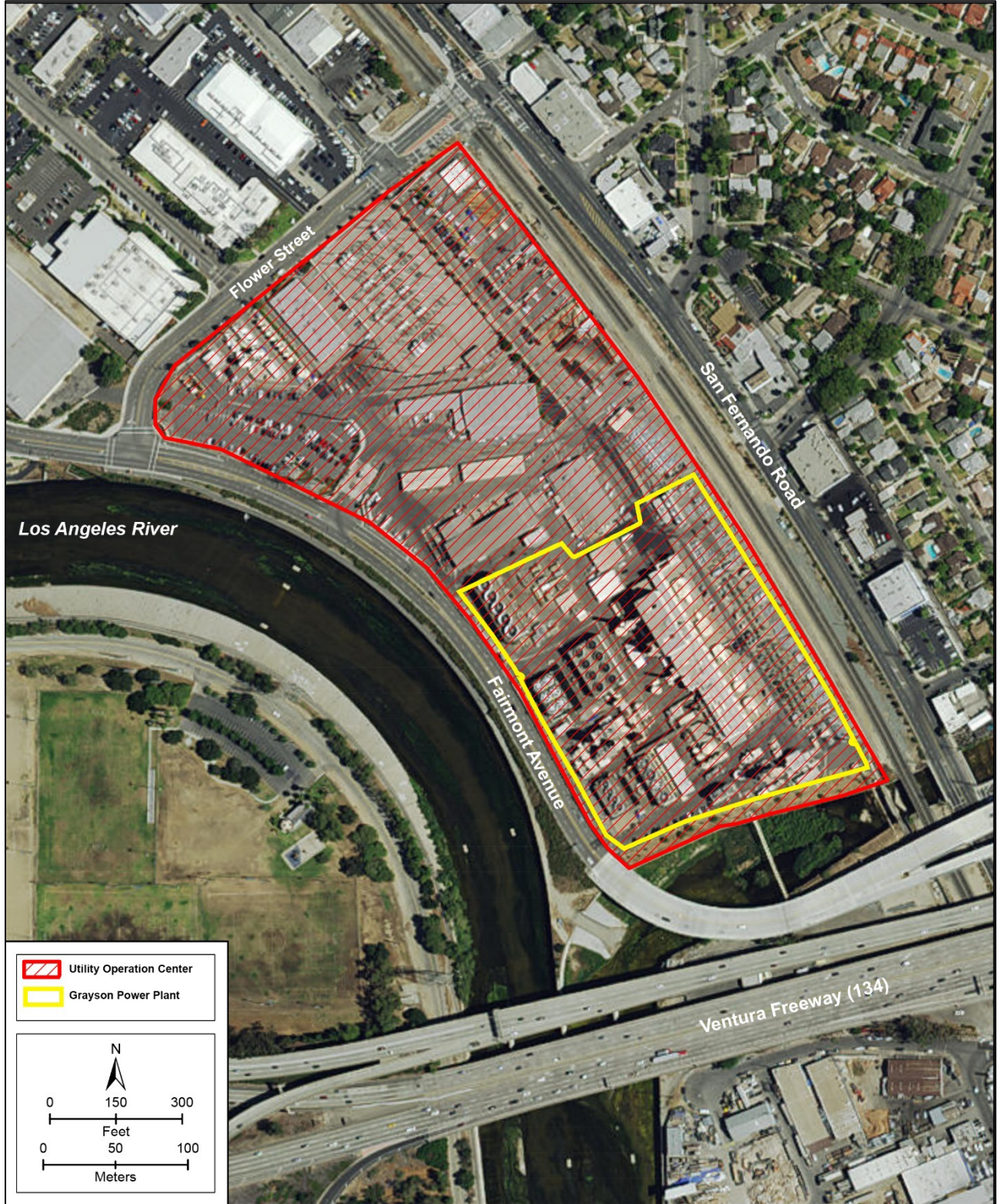




Figure 3 Project Demolition

