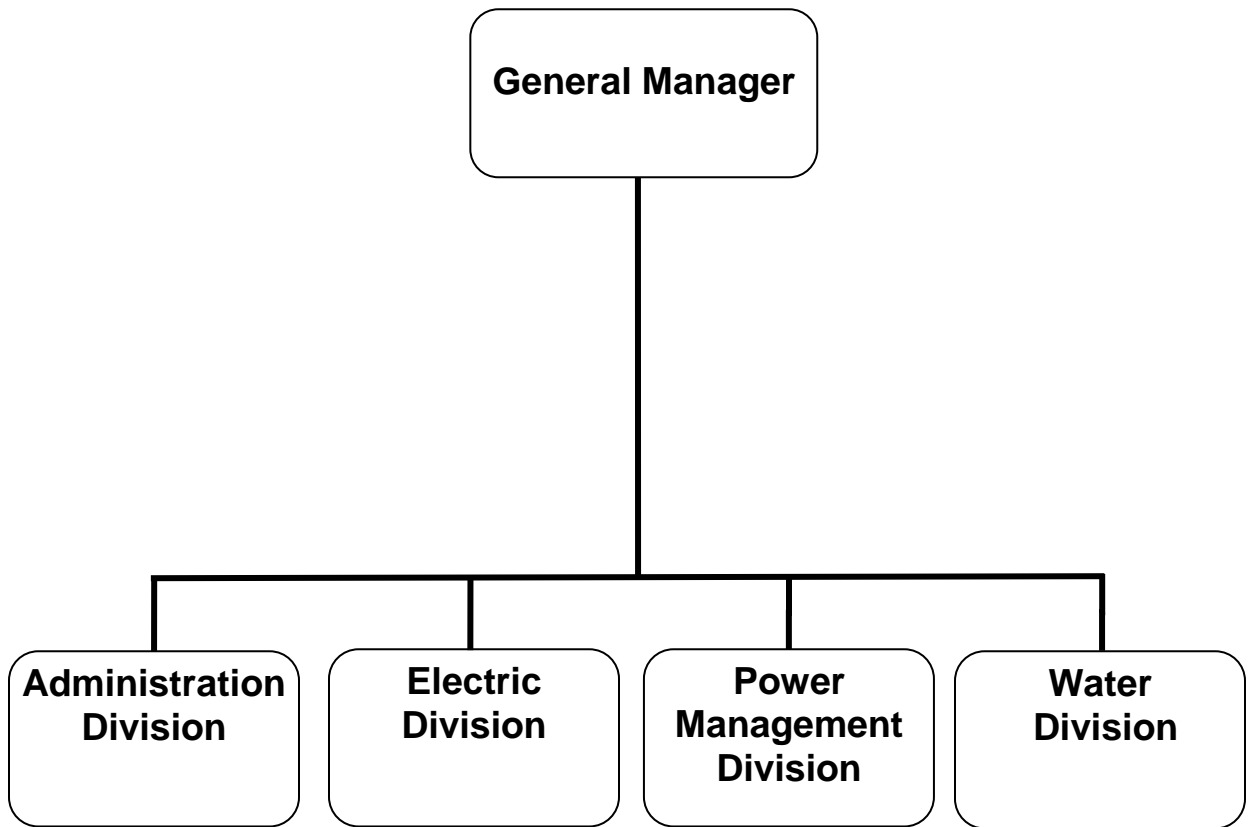


GLENDALE WATER & POWER



CITY OF GLENDALE

GLENDALE WATER & POWER

MISSION STATEMENT

Glendale Water & Power's mission is to cost effectively provide its customers with safe, efficient, reliable and sustainable water and power services at reasonable costs. This mission is accomplished through the prudent use of resources, technology, innovation, teamwork and planning to ensure sufficient supply for today and into the future.

DEPARTMENT DESCRIPTION

GWP consists of four divisions:

- Administration Division
- Electric Division
- Power Management Division
- Water Division

The focus of these divisions is to ensure that the City is served well today, and is poised to meet future challenges. The key components in Glendale Water & Power's operation include:

Electric Services – Provide safe, reliable and efficient electric service by maintaining and making continuous improvements in the power delivery system.

Power Management Services – Ensure reliable power supply under severe legislative regulatory controls and restrictions through a portfolio of resources.

Water Services - Provide safe and reliable water services that meet or exceed regulatory water quality requirements while optimizing the local production of water resources including water recycling, while efficiently pumping and storing water to minimize energy use.

Customer Service - Achieve high customer satisfaction levels by increasing the value of the programs and services GWP offers and working to continuously provide information to customers on how they can make informed decisions on water and energy use.

Rates - Achieve water and electric rates that will support the infrastructure needs and are appropriate for the level of service provided.

Infrastructure - Assure high service reliability by continuously improving and maintaining the GWP physical plant, electric and water facilities.

Work Force – Through succession planning, develop, retain and promote a safe, highly skilled, dedicated, and customer-focused work force.

Utility Modernization – Continuously develop and improve programs, systems and technologies to reduce GWP's costs while enhancing customer communications and increasing operational effectiveness.

Legislation & Regulation – Monitor, participate, and influence local, state, and federal legislation and regulations to provide the most benefit to Glendale Water & Power's customers.

Safety – Provide a safe environment for our staff and the community.

CITY OF GLENDALE

GLENDALE WATER & POWER

RELATIONSHIP TO CITY COUNCIL PRIORITIES

Exceptional Customer Service

Glendale Water & Power is committed to providing its residents with extraordinary customer service centered on the principles of integrity, quality, and customer satisfaction through the reliable and efficient delivery of energy and water services to every customer served. This includes ensuring minimal service disruptions to the extent possible, providing reasonable and reliable utility rates, and responding to customer inquiries in a prompt and professional manner.

Environmental Sustainability

Glendale Water and Power is always looking for ways to minimize environmental impacts and promote sustainable water and power resources. GWP's Water Division is committed to using more local sources of water and reducing the amount of imported water in its portfolio. The Water Division has been a pioneer in the use of recycled water since 1978 -one of the first in California. GWP's Electric Division recently completed an Integrated Resource Plan that includes increasing the amount of renewable energy sources in the future. Also, GWP has been utilizing the City's landfill gas as a renewable energy source for over 20 years, which has resulted in the added benefit of creating fewer greenhouse gas emissions from the landfill.

Economic Vibrancy

Glendale Water & Power received rate relief for the Electric System with a Council approved five year rate plan that enabled the Electric System to issue \$60 million in Revenue Bonds to fund capital projects and to provide a platform for establishing a pay-as-you-go model for future capital improvements. The Water System also obtained approval for a multi-year rate plan which continues the current financial plan to replenish cash reserves to Council approved levels, complete the bond funded capital improvement plan and to provide a platform for establishing a pay-as-you-go model for future capital improvements for day-to-day system rehabilitation.

Informed & Engaged Community

Glendale Water & Power pro-actively shares information and engages the community regarding important issues via multiple communication platforms. Recent illustrative examples include the significant outreach related to the possibility of power outages due to the gas storage issues: GWP performed extensive public outreach involving community presentations, distribution of flyers and notices, and the use of social media.

Infrastructure & Mobility

GWP strives to continue providing reliable services as measured by:

- Reduce the total number of preventable power outages below 25 per year.
- Implementation of the 10 Year Water Capital Improvement Program in a manner consistent with long term Water Master Plan to upgrade aging infrastructure while reflecting the ongoing financial, environmental and organizational challenges that utilities continue to face.
- Deliver and serve water that meets all federal, state and local drinking water standards.

**CITY OF GLENDALE
SUMMARY OF APPROPRIATIONS
GLENDALE WATER & POWER DEPARTMENT
FOR THE YEARS ENDING JUNE 30**

	Actual 2015-16	Adopted 2016-17	Revised 2016-17	Adopted 2017-18
Electric Public Benefits Fund				
Electric Public Benefit Fund (290-901)	\$ 6,381,463	\$ 7,711,563	\$ 7,714,648	\$ -
Electric Public Benefit Fund (291-480)	-	-	-	8,284,181
Total Electric Public Benefits Fund	\$ 6,381,463	\$ 7,711,563	\$ 7,714,648	\$ 8,284,181
Electric Utility				
Electric Surplus Fund				
GWP Administration (550-911)	\$ 20,107,000	\$ -	\$ -	\$ -
Total Electric Operation Fund	\$ 20,107,000	\$ -	\$ -	\$ -
Electric Works Revenue Fund				
GWP Administration (552-911)	\$ 31,565,869	\$ 57,272,900	\$ 57,272,900	\$ -
Power Management (552-921)	101,900,922	158,852,418	158,899,645	-
Electric Wholesale (552-922)	4,402	-	-	-
Electric Services (552-931)	25,214,384	31,121,805	31,218,370	-
Customer Services (552-971)	3,398,765	3,856,248	3,856,248	-
Administration (582-450)	-	-	-	68,525,662
Customer Services (582-451)	-	-	-	7,367,494
Conservation and Utility Modernization (582-452)	-	-	-	3,779,593
Utility Finance (582-453)	-	-	-	432,066
Environmental and Safety (582-454)	-	-	-	904,524
Utility Operation Center and Warehouse (582-455)	-	-	-	1,114,155
Yard Administration (582-456)	-	-	-	112,790
Engineering (582-460)	-	-	-	5,082,091
Customer Support (582-461)	-	-	-	840,600
Street Light (582-462)	-	-	-	523,881
Howard Substation (582-463)	-	-	-	2,467,054
Meter and Test Shop (582-464)	-	-	-	1,665,431
Station Maintenance (582-465)	-	-	-	3,983,968
Overhead and Underground (582-466)	-	-	-	7,394,306
Substructure (582-467)	-	-	-	688,241
Power Management (582-468)	-	-	-	140,215,222
Power Plant (582-469)	-	-	-	13,527,052
Total Electric Works Revenue Fund	\$ 162,084,342	\$ 251,103,371	\$ 251,247,163	\$ 258,624,130
Electric Depreciation Fund				
Administration (553-911)	\$ (27,304,387)	\$ 1,458,815	\$ 1,458,815	\$ -
Power Management (553-921)	11,649,335	2,698,895	6,758,687	-
Electric Services (553-931)	15,655,053	11,610,472	11,607,896	-
Electric Depreciation Fund Projects (583-490)	-	-	-	6,485,320
Total Electric Depreciation Fund	\$ -	\$ 15,768,182	\$ 19,825,398	\$ 6,485,320
Electric Customer Paid Capital Fund				
Electric Services (555-931)	\$ -	\$ 1,894,751	\$ 1,894,751	\$ -
Electric Customer Capital - GWP Project (585-490)	-	-	-	1,819,781
Total Electric Customer Paid Capital Fund	\$ -	\$ 1,894,751	\$ 1,894,751	\$ 1,819,781
Energy Cost Adjustment Charge Fund (556-921)	\$ 5,757,769	\$ -	\$ -	\$ -
Regulatory Adjustment Charge Fund (557-921)	8,160,710	-	-	-
Total Electric Utility	\$ 202,491,283	\$ 276,477,867	\$ 280,681,960	\$ 275,213,412
Water Utility				
Water Works Revenue Fund				
Administration (572-911)	\$ 8,542,778	\$ 9,658,000	\$ 9,658,000	\$ -

**CITY OF GLENDALE
SUMMARY OF APPROPRIATIONS
GLENDALE WATER & POWER DEPARTMENT
FOR THE YEARS ENDING JUNE 30**

	Actual 2015-16	Adopted 2016-17	Revised 2016-17	Adopted 2017-18
Water Services (572-951)	32,494,048	40,420,738	40,464,144	-
Customer Services (572-971)	1,766,399	1,898,942	1,898,942	-
Administration (592-450)	-	-	-	14,978,766
Customer Services (592-451)	-	-	-	2,321,724
Conservation and Utility Modernization (592-452)	-	-	-	1,061,931
Utility Finance (592-453)	-	-	-	121,861
Environmental and Safety (592-454)	-	-	-	255,258
Utility Operation Center and Warehouse (592-455)	-	-	-	314,229
Yard Administration (592-456)	-	-	-	31,809
Water Engineering (592-470)	-	-	-	6,548,166
Water Distribution (592-471)	-	-	-	3,573,014
Water Operation (592-472)	-	-	-	22,334,723
Water Quality (592-473)	-	-	-	1,734,479
Total Water Works Revenue Fund	\$ 42,803,225	\$ 51,977,680	\$ 52,021,086	\$ 53,275,960
Water Depreciation Fund				
Administration (573-911)	\$ (5,569,322)	\$ 785,515	\$ 785,515	\$ -
Water Services (573-951)	5,569,322	3,437,103	3,578,409	-
Water Depreciation Fund Projects (593-490)	-	-	-	2,983,680
Total Water Depreciation Fund	\$ -	\$ 4,222,618	\$ 4,363,924	\$ 2,983,680
Water Customer Paid Capital Fund				
Water Services (575-951)	\$ -	\$ 1,469,640	\$ 1,469,640	\$ -
Water Customer Capital - GWP Projects (595-490)	-	-	-	1,471,000
Total Water Customer Paid Capital Fund	\$ -	\$ 1,469,640	\$ 1,469,640	\$ 1,471,000
Total Water Utility	\$ 42,803,225	\$ 57,669,938	\$ 57,854,650	\$ 57,730,640
Department Grand Total	\$ 245,294,508	\$ 334,147,805	\$ 338,536,610	\$ 332,944,052

Notes:

* Effective FY 2017-18 new fund numbers were created for all GWP funds.

**CITY OF GLENDALE
 GLENDALE WATER & POWER DEPARTMENT
 ELECTRIC PUBLIC BENEFIT FUND - PUBLIC BENEFITS
 290-901**

		Actual 2015-16	Adopted 2016-17	Revised 2016-17	Adopted 2017-18
Salaries & Benefits					
41100	Salaries	\$ 276,201	\$ 318,681	\$ 318,681	\$ -
41200	Overtime	-	4,000	4,000	-
41300	Hourly wages	1,141	40,000	40,000	-
Various	Benefits	104,674	115,336	118,421	-
42700	PERS Retirement	60,389	80,343	80,343	-
42701	PERS cost sharing	(6,274)	(14,013)	(14,013)	-
Salaries & Benefits Total		\$ 436,131	\$ 544,347	\$ 547,432	\$ -
Maintenance & Operation					
43110	Contractual services	\$ 1,349,899	\$ 1,915,200	\$ 1,915,200	\$ -
43150	Cost allocation charge	69,708	74,342	74,342	-
44352	ISD service charge	5,879	29,904	29,904	-
44450	Postage	2,301	5,000	5,000	-
44550	Travel	765	3,300	3,300	-
44650	Training	1,207	1,500	1,500	-
44750	Liability Insurance	9,319	9,688	9,688	-
45250	Office supplies	-	2,000	2,000	-
45512	Public benefit programs	4,494,700	5,090,282	5,090,282	-
46500	Uncollectible accounts	11,546	25,000	25,000	-
46900	Business meetings	-	1,000	1,000	-
47000	Miscellaneous	9	10,000	10,000	-
Maintenance & Operation Total		\$ 5,945,332	\$ 7,167,216	\$ 7,167,216	\$ -
TOTAL		\$ 6,381,463	\$ 7,711,563	\$ 7,714,648	\$ -

Notes:

* Effective FY 2017-18 Electric Public Benefit Fund number (290) is under new Fund number 291.

**CITY OF GLENDALE
 GLENDALE WATER & POWER DEPARTMENT
 ELECTRIC PUBLIC BENEFIT FUND - PUBLIC BENEFITS
 291-480**

		Actual 2015-16	Adopted 2016-17	Revised 2016-17	Adopted 2017-18
Salaries & Benefits					
41100	Salaries	\$ -	\$ -	\$ -	\$ 385,425
41200	Overtime	-	-	-	5,000
41300	Hourly wages	-	-	-	72,100
Various	Benefits	-	-	-	118,579
42700	PERS Retirement	-	-	-	120,969
42701	PERS cost sharing	-	-	-	(18,211)
Salaries & Benefits Total		\$ -	\$ -	\$ -	\$ 683,862
Maintenance & Operation					
43110	Contractual services	\$ -	\$ -	\$ -	\$ 3,107,200
43150	Cost allocation charge	-	-	-	97,604
44352	ISD service charge	-	-	-	32,291
44353	Building Maint. Serv. Charge	-	-	-	37,790
44356	GWP municipal billing	-	-	-	227,378
44450	Postage	-	-	-	5,000
44550	Travel	-	-	-	3,300
44650	Training	-	-	-	1,500
44750	Liability Insurance	-	-	-	12,537
45250	Office supplies	-	-	-	2,000
45512	Public benefit programs	-	-	-	4,027,729
46500	Uncollectible accounts	-	-	-	25,000
46900	Business meetings	-	-	-	1,000
47000	Miscellaneous	-	-	-	19,990
Maintenance & Operation Total		\$ -	\$ -	\$ -	\$ 7,600,319
TOTAL		\$ -	\$ -	\$ -	\$ 8,284,181

Notes:

* Effective FY 2017-18 Electric Public Benefit Fund number (290) is under new Fund number 291.

CITY OF GLENDALE
GLENDALE WATER & POWER DEPARTMENT
ELECTRIC SURPLUS FUND - GWP ADMINISTRATION
550-911

		Actual 2015-16	Adopted 2016-17	Revised 2016-17	Adopted 2017-18
Transfers					
48010	Transfer-General Fund	\$ 20,107,000	\$ -	\$ -	\$ -
Transfers Total		\$ 20,107,000	\$ -	\$ -	\$ -
TOTAL		\$ 20,107,000	\$ -	\$ -	\$ -

**CITY OF GLENDALE
 GLENDALE WATER & POWER DEPARTMENT
 ELECTRIC WORKS REVENUE FUND - GWP ADMINISTRATION
 552-911**

		Actual 2015-16	Adopted 2016-17	Revised 2016-17	Adopted 2017-18
Maintenance & Operation					
43110	Contractual services	\$ 411,966	\$ 525,000	\$ 525,000	\$ -
46000	Depreciation	26,156,223	28,270,000	28,270,000	-
47050	Interest on bonds	4,997,681	7,851,100	7,851,100	-
Maintenance & Operation Total		<u>\$ 31,565,869</u>	<u>\$ 36,646,100</u>	<u>\$ 36,646,100</u>	<u>\$ -</u>
Transfers					
48010	Transfer-General Fund	\$ -	\$ 20,626,800	\$ 20,626,800	\$ -
Transfers Total		<u>\$ -</u>	<u>\$ 20,626,800</u>	<u>\$ 20,626,800</u>	<u>\$ -</u>
TOTAL		<u>\$ 31,565,869</u>	<u>\$ 57,272,900</u>	<u>\$ 57,272,900</u>	<u>\$ -</u>

Notes:

* Effective FY 2017-18 Electric Works Revenue Fund (552) is under new Fund number 582.

**CITY OF GLENDALE
 GLENDALE WATER & POWER DEPARTMENT
 ELECTRIC WORKS REVENUE FUND - POWER MANAGEMENT
 552-921**

		Actual 2015-16	Adopted 2016-17	Revised 2016-17	Adopted 2017-18
Salaries & Benefits					
41100	Salaries	\$ 4,930,880	\$ 5,943,715	\$ 5,943,715	\$ -
41200	Overtime	753,196	245,000	245,000	-
41300	Hourly wages	35,428	218,130	218,130	-
Various	Benefits	1,463,239	1,555,791	1,603,018	-
42700	PERS Retirement	1,043,620	1,352,971	1,352,971	-
42701	PERS cost sharing	(108,886)	(203,042)	(203,042)	-
42799	Salary charges in (out)	-	(105,700)	(105,700)	-
Salaries & Benefits Total		\$ 8,117,477	\$ 9,006,865	\$ 9,054,092	\$ -
Maintenance & Operation					
43050	Repairs-bldgs & grounds	\$ 3,035	\$ 230,000	\$ 230,000	\$ -
43060	Utilities	2,716,823	1,866,000	1,866,000	-
43070	Lease payments	1,604	2,500	2,500	-
43090	Equipment usage	14,132	38,400	38,400	-
43110	Contractual services	4,086,556	12,144,921	12,144,921	-
44100	Repairs to equipment	264,613	408,000	408,000	-
44120	Repairs to office equip	-	1,000	1,000	-
44200	Advertising	350	-	-	-
44250	Data communication	-	1,500	1,500	-
44300	Telephone	-	500	500	-
44400	Janitorial services	2,711	30,000	30,000	-
44450	Postage	1,164	2,400	2,400	-
44550	Travel	17,844	49,500	49,500	-
44600	Laundry & towel service	11,357	20,000	20,000	-
44650	Training	52,134	48,350	48,350	-
44700	Computer software	-	105,000	105,000	-
44750	Liability Insurance	192,140	169,505	169,505	-
44760	Regulatory	237,401	3,742,000	3,742,000	-
44761	RAC variance	(8,160,710)	-	-	-
44800	Membership & dues	3,900	10,200	10,200	-
45050	Periodicals & newspapers	12,955	12,000	12,000	-
45100	Books	269	700	700	-
45150	Furniture & equipment	-	5,300	5,300	-
45170	Computer hardware	-	5,000	5,000	-
45250	Office supplies	7,078	13,400	13,400	-
45300	Small tools	-	15,000	15,000	-
45350	General supplies	793,934	1,029,700	1,029,700	-
45501	Fuel-landfill gas	2,472,865	2,472,900	2,472,900	-
45502	Fuel-natural gas	9,710,741	16,860,354	16,860,354	-
45506	Carbon allowances	1,014,997	-	-	-
45507	Renewable energy credits	297,069	-	-	-
45509	ECAC variance	(5,757,769)	-	-	-
45510	Purchased power	80,673,163	105,456,259	105,456,259	-
45511	Hedging costs	(270,000)	800,000	800,000	-
45600	A & G overhead	4,509,698	4,300,164	4,300,164	-
45621	Employee benefit overhead	(62,898)	-	-	-
46001	Gas depletion	933,029	-	-	-
46900	Business meetings	2,659	1,500	1,500	-
47000	Miscellaneous	661	3,500	3,500	-

CITY OF GLENDALE
GLENDALE WATER & POWER DEPARTMENT
ELECTRIC WORKS REVENUE FUND - POWER MANAGEMENT
552-921

		Actual 2015-16	Adopted 2016-17	Revised 2016-17	Adopted 2017-18
47010	Discount earned & lost	(60)	-	-	-
Maintenance & Operation Total		\$ 93,783,445	\$ 149,845,553	\$ 149,845,553	\$ -
TOTAL		\$ 101,900,922	\$ 158,852,418	\$ 158,899,645	\$ -

Notes:

* Effective FY 2017-18 Electric Works Revenue Fund (552) is under new Fund number 582.

**CITY OF GLENDALE
 GLENDALE WATER & POWER DEPARTMENT
 ELECTRIC WORKS REVENUE FUND - ELECTRIC WHOLESALE
 552-922**

	Actual 2015-16	Adopted 2016-17	Revised 2016-17	Adopted 2017-18
Maintenance & Operation				
45502 Fuel-natural gas	\$ 4,402	\$ -	\$ -	\$ -
Maintenance & Operation Total	\$ 4,402	\$ -	\$ -	\$ -
TOTAL	\$ 4,402	\$ -	\$ -	\$ -

Notes:

* Effective FY 2017-18 Electric Works Revenue Fund (552) is under new Fund number 582.

**CITY OF GLENDALE
GLENDALE WATER & POWER DEPARTMENT
ELECTRIC WORKS REVENUE FUND - ELECTRIC SERVICES
552-931**

		Actual 2015-16	Adopted 2016-17	Revised 2016-17	Adopted 2017-18
Salaries & Benefits					
41100	Salaries	\$ 7,960,538	\$ 11,165,269	\$ 11,165,269	\$ -
41200	Overtime	1,035,461	925,000	925,000	-
41300	Hourly wages	111,307	144,285	144,285	-
Various	Benefits	2,507,508	2,856,073	2,952,638	-
42601	PARS supplemental retirement	714,024	714,024	714,024	-
42700	PERS Retirement	(127,212) **	2,496,581	2,496,581	-
42701	PERS cost sharing	(158,797)	(363,695)	(363,695)	-
42799	Salary charges in (out)	-	(3,318,212)	(3,318,212)	-
Salaries & Benefits Total		\$ 12,042,829	\$ 14,619,325	\$ 14,715,890	\$ -
Maintenance & Operation					
43050	Repairs-bldgs & grounds	\$ 28,569	\$ 45,000	\$ 45,000	\$ -
43060	Utilities	186,089	175,000	175,000	-
43070	Lease payments	1,928	6,000	6,000	-
43090	Equipment usage	807,427	395,946	395,946	-
43110	Contractual services	1,286,602	2,582,300	2,582,300	-
43111	Construction services	-	20,000	20,000	-
43150	Cost allocation charge	3,572,549	3,684,683	3,684,683	-
44100	Repairs to equipment	42,163	75,000	75,000	-
44120	Repairs to office equip	-	3,000	3,000	-
44300	Telephone	14,549	20,000	20,000	-
44400	Janitorial services	-	10,000	10,000	-
44450	Postage	3,170	4,000	4,000	-
44550	Travel	27,383	73,629	73,629	-
44600	Laundry & towel service	-	1,000	1,000	-
44650	Training	9,053	168,955	168,955	-
44700	Computer software	1,185	2,000	2,000	-
44750	Liability Insurance	305,962	331,785	331,785	-
44760	Regulatory	10,909	43,504	43,504	-
44800	Membership & dues	76,920	76,500	76,500	-
45100	Books	2,230	10,100	10,100	-
45150	Furniture & equipment	87	7,500	7,500	-
45170	Computer hardware	1,647	36,000	36,000	-
45200	Maps & blue prints	-	100	100	-
45250	Office supplies	17,747	23,000	23,000	-
45300	Small tools	50,913	75,000	75,000	-
45350	General supplies	736,825	809,500	809,500	-
45400	Reports & publications	-	5,000	5,000	-
45450	Printing and graphics	401	-	-	-
45600	A & G overhead	6,287,391	7,811,928	7,811,928	-
45621	Employee benefit overhead	(579,953)	-	-	-
45622	Customer services allocation	(2)	-	-	-
46900	Business meetings	465	5,600	5,600	-
47000	Miscellaneous	279,348	450	450	-
47010	Discount earned & lost	(4)	-	-	-
Maintenance & Operation Total		\$ 13,171,556	\$ 16,502,480	\$ 16,502,480	\$ -
TOTAL		\$ 25,214,384	\$ 31,121,805	\$ 31,218,370	\$ -

Notes:

* Effective FY 2017-18 Electric Works Revenue Fund (552) is under new Fund number 582.

** PERS Retirement costs include PERS funding reversal due to GASB 68 under accounts 42703 and 42704.

CITY OF GLENDALE
 GLENDALE WATER & POWER DEPARTMENT
 ELECTRIC WORKS REVENUE FUND - CUSTOMER SERVICES
 552-971

	Actual 2015-16	Adopted 2016-17	Revised 2016-17	Adopted 2017-18
Maintenance & Operation				
45610 Section overhead	\$ 43,160	\$ -	\$ -	\$ -
45622 Customer services allocation	3,355,605	3,856,248	3,856,248	-
Maintenance & Operation Total	\$ 3,398,765	\$ 3,856,248	\$ 3,856,248	\$ -
TOTAL	\$ 3,398,765	\$ 3,856,248	\$ 3,856,248	\$ -

Notes:

* Effective FY 2017-18 Electric Works Revenue Fund (552) is under new Fund number 582.

**CITY OF GLENDALE
 GLENDALE WATER & POWER DEPARTMENT
 ELECTRIC WORKS REVENUE FUND - GWP ADMINISTRATION
 582-450**

		Actual 2015-16	Adopted 2016-17	Revised 2016-17	Adopted 2017-18
Salaries & Benefits					
41100	Salaries	\$ -	\$ -	\$ -	\$ 690,383
41200	Overtime	-	-	-	1,560
41300	Hourly wages	-	-	-	46,308
Various	Benefits	-	-	-	175,973
42700	PERS Retirement	-	-	-	194,420
42701	PERS cost sharing	-	-	-	(29,268)
Salaries & Benefits Total		\$ -	\$ -	\$ -	\$ 1,079,376
Maintenance & Operation					
43060	Utilities	\$ -	\$ -	\$ -	\$ 57,330
43110	Contractual services	-	-	-	565,500
43150	Cost allocation charge	-	-	-	5,493,166
44120	Repairs to office equip	-	-	-	1,560
44351	Fleet / equip rental charge	-	-	-	1,063,959
44352	ISD service charge	-	-	-	2,847,679
44353	Building Maint. Serv. Charge	-	-	-	1,762,408
44450	Postage	-	-	-	780
44550	Travel	-	-	-	15,600
44650	Training	-	-	-	3,900
44750	Liability Insurance	-	-	-	20,006
44751	Insurance/surety bond premium	-	-	-	409,500
44760	Regulatory	-	-	-	15,600
44800	Membership & dues	-	-	-	1,248
45050	Periodicals & newspapers	-	-	-	1,560
45250	Office supplies	-	-	-	39,390
45350	General supplies	-	-	-	78,000
45450	Printing and graphics	-	-	-	19,500
46000	Depreciation	-	-	-	26,450,000
46900	Business meetings	-	-	-	5,460
47000	Miscellaneous	-	-	-	24,180
47050	Interest on bonds	-	-	-	8,409,960
Maintenance & Operation Total		\$ -	\$ -	\$ -	\$ 47,286,286
Transfers					
48010	Transfer-General Fund	\$ -	\$ -	\$ -	\$ 20,160,000
Transfers Total		\$ -	\$ -	\$ -	\$ 20,160,000
TOTAL		\$ -	\$ -	\$ -	\$ 68,525,662

Notes:

* Effective FY 2017-18 Electric Works Revenue Fund (552) is under new Fund number 582.

**CITY OF GLENDALE
 GLENDALE WATER & POWER DEPARTMENT
 ELECTRIC WORKS REVENUE FUND - GWP ADMINISTRATION - CUSTOMER SERVICES
 582-451**

		Actual 2015-16	Adopted 2016-17	Revised 2016-17	Adopted 2017-18
Salaries & Benefits					
41100	Salaries	\$ -	\$ -	\$ -	\$ 2,620,017
41200	Overtime	-	-	-	30,780
41300	Hourly wages	-	-	-	16,595
Various	Benefits	-	-	-	647,342
42700	PERS Retirement	-	-	-	693,491
42701	PERS cost sharing	-	-	-	(104,399)
Salaries & Benefits Total		\$ -	\$ -	\$ -	\$ 3,903,826
Maintenance & Operation					
43090	Equipment usage	\$ -	\$ -	\$ -	\$ 92,720
43110	Contractual services	-	-	-	1,601,814
43150	Cost allocation charge	-	-	-	476,594
44351	Fleet / equip rental charge	-	-	-	49,544
44352	ISD service charge	-	-	-	551,473
44353	Building Maint. Serv. Charge	-	-	-	341,227
44450	Postage	-	-	-	12,160
44550	Travel	-	-	-	10,070
44650	Training	-	-	-	4,560
44750	Liability Insurance	-	-	-	72,288
44800	Membership & dues	-	-	-	570
45150	Furniture & equipment	-	-	-	7,600
45250	Office supplies	-	-	-	15,200
45300	Small tools	-	-	-	2,280
45350	General supplies	-	-	-	3,040
46500	Uncollectible accounts	-	-	-	220,400
46900	Business meetings	-	-	-	1,140
47000	Miscellaneous	-	-	-	988
Maintenance & Operation Total		\$ -	\$ -	\$ -	\$ 3,463,668
TOTAL		\$ -	\$ -	\$ -	\$ 7,367,494

Notes:

* Effective FY 2017-18 Electric Works Revenue Fund (552) is under new Fund number 582.

**CITY OF GLENDALE
 GLENDALE WATER & POWER DEPARTMENT
 ELECTRIC WORKS REVENUE FUND - GWP ADMINISTRATION - CONSERVATION & UTILITY MODERNIZATION
 582-452**

		Actual 2015-16	Adopted 2016-17	Revised 2016-17	Adopted 2017-18
Salaries & Benefits					
41100	Salaries	\$ -	\$ -	\$ -	\$ 460,650
41200	Overtime	-	-	-	35,720
41300	Hourly wages	-	-	-	30,369
Various	Benefits	-	-	-	122,311
42700	PERS Retirement	-	-	-	129,960
42701	PERS cost sharing	-	-	-	(19,562)
Salaries & Benefits Total		\$ -	\$ -	\$ -	\$ 759,448
Maintenance & Operation					
43090	Equipment usage	\$ -	\$ -	\$ -	\$ 11,700
43110	Contractual services	-	-	-	2,592,731
44100	Repairs to equipment	-	-	-	18,642
44200	Advertising	-	-	-	15,600
44450	Postage	-	-	-	117,000
44550	Travel	-	-	-	20,526
44650	Training	-	-	-	29,211
44700	Computer software	-	-	-	7,020
44750	Liability Insurance	-	-	-	14,275
44800	Membership & dues	-	-	-	2,340
45050	Periodicals & newspapers	-	-	-	1,950
45150	Furniture & equipment	-	-	-	110,682
45170	Computer hardware	-	-	-	20,280
45250	Office supplies	-	-	-	4,290
45350	General supplies	-	-	-	19,500
45450	Printing and graphics	-	-	-	15,600
46900	Business meetings	-	-	-	390
47000	Miscellaneous	-	-	-	18,408
Maintenance & Operation Total		\$ -	\$ -	\$ -	\$ 3,020,145
TOTAL		\$ -	\$ -	\$ -	\$ 3,779,593

Notes:

* Effective FY 2017-18 Electric Works Revenue Fund (552) is under new Fund number 582.

**CITY OF GLENDALE
 GLENDALE WATER & POWER DEPARTMENT
 ELECTRIC WORKS REVENUE FUND - GWP ADM - UTILITY FINANCE
 582-453**

		Actual 2015-16	Adopted 2016-17	Revised 2016-17	Adopted 2017-18
Salaries & Benefits					
41100	Salaries	\$ -	\$ -	\$ -	\$ 281,753
Various	Benefits	-	-	-	79,396
42700	PERS Retirement	-	-	-	74,495
42701	PERS cost sharing	-	-	-	(11,214)
Salaries & Benefits Total		\$ -	\$ -	\$ -	\$ 424,430
Maintenance & Operation					
44750	Liability Insurance	\$ -	\$ -	\$ -	\$ 7,636
Maintenance & Operation Total		\$ -	\$ -	\$ -	\$ 7,636
TOTAL		\$ -	\$ -	\$ -	\$ 432,066

Notes:

* Effective FY 2017-18 Electric Works Revenue Fund (552) is under new Fund number 582.

**CITY OF GLENDALE
 GLENDALE WATER & POWER DEPARTMENT
 ELECTRIC WORKS REVENUE FUND - GWP ADM - ENVIRONMENTAL & SAFETY
 582-454**

		Actual 2015-16	Adopted 2016-17	Revised 2016-17	Adopted 2017-18
Salaries & Benefits					
41100	Salaries	\$ -	\$ -	\$ -	\$ 343,948
41200	Overtime	-	-	-	3,800
Various	Benefits	-	-	-	65,896
42700	PERS Retirement	-	-	-	90,585
42701	PERS cost sharing	-	-	-	(13,637)
Salaries & Benefits Total		<u>\$ -</u>	<u>\$ -</u>	<u>\$ -</u>	<u>\$ 490,592</u>
Maintenance & Operation					
43110	Contractual services	\$ -	\$ -	\$ -	\$ 202,800
44550	Travel	-	-	-	7,800
44650	Training	-	-	-	54,600
44750	Liability Insurance	-	-	-	9,424
44800	Membership & dues	-	-	-	936
45050	Periodicals & newspapers	-	-	-	390
45100	Books	-	-	-	390
45350	General supplies	-	-	-	78,000
45400	Reports & publications	-	-	-	1,092
45450	Printing and graphics	-	-	-	3,120
46900	Business meetings	-	-	-	780
47000	Miscellaneous	-	-	-	54,600
Maintenance & Operation Total		<u>\$ -</u>	<u>\$ -</u>	<u>\$ -</u>	<u>\$ 413,932</u>
TOTAL		<u><u>\$ -</u></u>	<u><u>\$ -</u></u>	<u><u>\$ -</u></u>	<u><u>\$ 904,524</u></u>

Notes:

* Effective FY 2017-18 Electric Works Revenue Fund (552) is under new Fund number 582.

**CITY OF GLENDALE
 GLENDALE WATER & POWER DEPARTMENT
 ELECTRIC WORKS REVENUE FUND - GWP ADM - UTILITY OPERATION CENTER & WAREHOUSE
 582-455**

		Actual 2015-16	Adopted 2016-17	Revised 2016-17	Adopted 2017-18
Salaries & Benefits					
41100	Salaries	\$ -	\$ -	\$ -	\$ 261,584
41300	Hourly wages	-	-	-	16,169
Various	Benefits	-	-	-	73,502
42700	PERS Retirement	-	-	-	73,245
42701	PERS cost sharing	-	-	-	(11,026)
Salaries & Benefits Total		\$ -	\$ -	\$ -	\$ 413,474
Maintenance & Operation					
43050	Repairs-bldgs & grounds	\$ -	\$ -	\$ -	\$ 109,200
43060	Utilities	-	-	-	53,235
43070	Lease payments	-	-	-	44,460
43090	Equipment usage	-	-	-	897
43110	Contractual services	-	-	-	230,100
44350	Vehicle maintenance	-	-	-	390
44400	Janitorial services	-	-	-	19,120
44450	Postage	-	-	-	390
44600	Laundry & towel service	-	-	-	22,230
44750	Liability Insurance	-	-	-	7,527
44760	Regulatory	-	-	-	1,262
44800	Membership & dues	-	-	-	585
45050	Periodicals & newspapers	-	-	-	390
45100	Books	-	-	-	390
45150	Furniture & equipment	-	-	-	1,950
45250	Office supplies	-	-	-	4,290
45300	Small tools	-	-	-	1,170
45350	General supplies	-	-	-	13,945
45450	Printing and graphics	-	-	-	780
46900	Business meetings	-	-	-	390
47000	Miscellaneous	-	-	-	31,980
47010	Discount earned & lost	-	-	-	156,000
Maintenance & Operation Total		\$ -	\$ -	\$ -	\$ 700,681
TOTAL		\$ -	\$ -	\$ -	\$ 1,114,155

Notes:

* Effective FY 2017-18 Electric Works Revenue Fund (552) is under new Fund number 582.

**CITY OF GLENDALE
 GLENDALE WATER & POWER DEPARTMENT
 ELECTRIC WORKS REVENUE FUND - GWP YARD ADMINISTRATION
 582-456**

		Actual 2015-16	Adopted 2016-17	Revised 2016-17	Adopted 2017-18
Salaries & Benefits					
41100	Salaries	\$ -	\$ -	\$ -	\$ 76,383
Various	Benefits	-	-	-	17,254
42700	PERS Retirement	-	-	-	20,110
42701	PERS cost sharing	-	-	-	(3,027)
Salaries & Benefits Total		\$ -	\$ -	\$ -	\$ 110,720
Maintenance & Operation					
44750	Liability Insurance	\$ -	\$ -	\$ -	\$ 2,070
Maintenance & Operation Total		\$ -	\$ -	\$ -	\$ 2,070
TOTAL		\$ -	\$ -	\$ -	\$ 112,790

Notes:

* Effective FY 2017-18 Electric Works Revenue Fund (552) is under new Fund number 582.

**CITY OF GLENDALE
 GLENDALE WATER & POWER DEPARTMENT
 ELECTRIC WORKS REVENUE FUND - GWP ELECTRIC - ENGINEERING
 582-460**

		Actual 2015-16	Adopted 2016-17	Revised 2016-17	Adopted 2017-18
Salaries & Benefits					
41100	Salaries	\$ -	\$ -	\$ -	\$ 2,195,743
41200	Overtime	-	-	-	50,000
41300	Hourly wages	-	-	-	143,808
Various	Benefits	-	-	-	471,359
42700	PERS Retirement	-	-	-	610,062
42701	PERS cost sharing	-	-	-	(90,288)
42799	Salary charges in (out)	-	-	-	(336,150)
Salaries & Benefits Total		\$ -	\$ -	\$ -	\$ 3,044,534
Maintenance & Operation					
43070	Lease payments	\$ -	\$ -	\$ -	\$ 6,000
43090	Equipment usage	-	-	-	165,544
43110	Contractual services	-	-	-	1,325,300
44100	Repairs to equipment	-	-	-	3,000
44120	Repairs to office equip	-	-	-	2,000
44300	Telephone	-	-	-	3,000
44450	Postage	-	-	-	2,500
44550	Travel	-	-	-	50,000
44650	Training	-	-	-	152,550
44700	Computer software	-	-	-	2,000
44750	Liability Insurance	-	-	-	64,759
44760	Regulatory	-	-	-	35,504
44800	Membership & dues	-	-	-	63,500
45100	Books	-	-	-	10,000
45150	Furniture & equipment	-	-	-	7,500
45170	Computer hardware	-	-	-	12,000
45250	Office supplies	-	-	-	21,000
45300	Small tools	-	-	-	4,000
45350	General supplies	-	-	-	96,900
45400	Reports & publications	-	-	-	5,000
46900	Business meetings	-	-	-	5,500
Maintenance & Operation Total		\$ -	\$ -	\$ -	\$ 2,037,557
TOTAL		\$ -	\$ -	\$ -	\$ 5,082,091

Notes:

* Effective FY 2017-18 Electric Works Revenue Fund (552) is under new Fund number 582.

**CITY OF GLENDALE
 GLENDALE WATER & POWER DEPARTMENT
 ELECTRIC WORKS REVENUE FUND - GWP ELECTRIC - CUSTOMER SUPPORT
 582-461**

		Actual 2015-16	Adopted 2016-17	Revised 2016-17	Adopted 2017-18
Salaries & Benefits					
41100	Salaries	\$ -	\$ -	\$ -	\$ 625,457
Various	Benefits	-	-	-	148,819
42700	PERS Retirement	-	-	-	164,762
42701	PERS cost sharing	-	-	-	(24,802)
42799	Salary charges in (out)	-	-	-	(90,586)
Salaries & Benefits Total		\$ -	\$ -	\$ -	\$ 823,650
Maintenance & Operation					
44750	Liability Insurance	\$ -	\$ -	\$ -	\$ 16,950
Maintenance & Operation Total		\$ -	\$ -	\$ -	\$ 16,950
TOTAL		\$ -	\$ -	\$ -	\$ 840,600

Notes:

* Effective FY 2017-18 Electric Works Revenue Fund (552) is under new Fund number 582.

**CITY OF GLENDALE
 GLENDALE WATER & POWER DEPARTMENT
 ELECTRIC WORKS REVENUE FUND - GWP ELECTRIC - STREET LIGHT
 582-462**

		Actual 2015-16	Adopted 2016-17	Revised 2016-17	Adopted 2017-18
Salaries & Benefits					
41100	Salaries	\$ -	\$ -	\$ -	\$ 242,231
41200	Overtime	-	-	-	50,000
Various	Benefits	-	-	-	79,927
42700	PERS Retirement	-	-	-	63,888
42701	PERS cost sharing	-	-	-	(7,213)
42799	Salary charges in (out)	-	-	-	(42,883)
Salaries & Benefits Total		\$ -	\$ -	\$ -	\$ 385,950
Maintenance & Operation					
43090	Equipment usage	\$ -	\$ -	\$ -	\$ 18,612
43110	Contractual services	-	-	-	10,000
43111	Construction services	-	-	-	20,000
44750	Liability Insurance	-	-	-	7,919
45100	Books	-	-	-	100
45300	Small tools	-	-	-	10,000
45350	General supplies	-	-	-	71,200
46900	Business meetings	-	-	-	100
Maintenance & Operation Total		\$ -	\$ -	\$ -	\$ 137,931
TOTAL		\$ -	\$ -	\$ -	\$ 523,881

Notes:

* Effective FY 2017-18 Electric Works Revenue Fund (552) is under new Fund number 582.

**CITY OF GLENDALE
 GLENDALE WATER & POWER DEPARTMENT
 ELECTRIC WORKS REVENUE FUND - GWP ELECTRIC - HOWARD SUBSTATION
 582-463**

		Actual 2015-16	Adopted 2016-17	Revised 2016-17	Adopted 2017-18
Salaries & Benefits					
41100	Salaries	\$ -	\$ -	\$ -	\$ 1,188,560
41200	Overtime	-	-	-	265,000
41300	Hourly wages	-	-	-	45,050
Various	Benefits	-	-	-	345,623
42700	PERS Retirement	-	-	-	326,360
42701	PERS cost sharing	-	-	-	(38,232)
Salaries & Benefits Total		\$ -	\$ -	\$ -	\$ 2,132,361
Maintenance & Operation					
43050	Repairs-bldgs & grounds	\$ -	\$ -	\$ -	\$ 25,000
43060	Utilities	-	-	-	164,850
43090	Equipment usage	-	-	-	230
44300	Telephone	-	-	-	17,000
44400	Janitorial services	-	-	-	5,000
44650	Training	-	-	-	17,000
44750	Liability Insurance	-	-	-	40,613
45170	Computer hardware	-	-	-	23,000
45250	Office supplies	-	-	-	2,000
45350	General supplies	-	-	-	40,000
Maintenance & Operation Total		\$ -	\$ -	\$ -	\$ 334,693
TOTAL		\$ -	\$ -	\$ -	\$ 2,467,054

Notes:

* Effective FY 2017-18 Electric Works Revenue Fund (552) is under new Fund number 582.

**CITY OF GLENDALE
 GLENDALE WATER & POWER DEPARTMENT
 ELECTRIC WORKS REVENUE FUND - GWP ELECTRIC - METER AND TEST SHOP
 582-464**

		Actual 2015-16	Adopted 2016-17	Revised 2016-17	Adopted 2017-18
Salaries & Benefits					
41100	Salaries	\$ -	\$ -	\$ -	\$ 1,175,425
41200	Overtime	-	-	-	55,000
Various	Benefits	-	-	-	274,063
42700	PERS Retirement	-	-	-	299,183
42701	PERS cost sharing	-	-	-	(34,968)
42799	Salary charges in (out)	-	-	-	(182,395)
Salaries & Benefits Total		\$ -	\$ -	\$ -	\$ 1,586,308
Maintenance & Operation					
43090	Equipment usage	\$ -	\$ -	\$ -	\$ 17,280
43110	Contractual services	-	-	-	18,000
44100	Repairs to equipment	-	-	-	4,000
44750	Liability Insurance	-	-	-	34,843
45350	General supplies	-	-	-	5,000
Maintenance & Operation Total		\$ -	\$ -	\$ -	\$ 79,123
TOTAL		\$ -	\$ -	\$ -	\$ 1,665,431

Notes:

* Effective FY 2017-18 Electric Works Revenue Fund (552) is under new Fund number 582.

**CITY OF GLENDALE
 GLENDALE WATER & POWER DEPARTMENT
 ELECTRIC WORKS REVENUE FUND - GWP ELECTRIC - STATION MAINTENANCE
 582-465**

		Actual 2015-16	Adopted 2016-17	Revised 2016-17	Adopted 2017-18
Salaries & Benefits					
41100	Salaries	\$ -	\$ -	\$ -	\$ 2,016,864
41200	Overtime	-	-	-	150,000
Various	Benefits	-	-	-	542,373
42700	PERS Retirement	-	-	-	520,663
42701	PERS cost sharing	-	-	-	(61,531)
42799	Salary charges in (out)	-	-	-	(323,686)
Salaries & Benefits Total		\$ -	\$ -	\$ -	\$ 2,844,683
Maintenance & Operation					
43090	Equipment usage	\$ -	\$ -	\$ -	\$ 157,210
43110	Contractual services	-	-	-	734,000
44100	Repairs to equipment	-	-	-	57,000
44400	Janitorial services	-	-	-	5,000
44450	Postage	-	-	-	500
44750	Liability Insurance	-	-	-	60,575
45350	General supplies	-	-	-	125,000
Maintenance & Operation Total		\$ -	\$ -	\$ -	\$ 1,139,285
TOTAL		\$ -	\$ -	\$ -	\$ 3,983,968

Notes:

* Effective FY 2017-18 Electric Works Revenue Fund (552) is under new Fund number 582.

**CITY OF GLENDALE
 GLENDALE WATER & POWER DEPARTMENT
 ELECTRIC WORKS REVENUE FUND - GWP ELECTRIC - OVERHEAD & UNDERGROUND
 582-466**

		Actual 2015-16	Adopted 2016-17	Revised 2016-17	Adopted 2017-18
Salaries & Benefits					
41100	Salaries	\$ -	\$ -	\$ -	\$ 3,713,267
41200	Overtime	-	-	-	550,000
41300	Hourly wages	-	-	-	176,272
Various	Benefits	-	-	-	997,267
42700	PERS Retirement	-	-	-	982,714
42701	PERS cost sharing	-	-	-	(119,852)
42799	Salary charges in (out)	-	-	-	(655,593)
Salaries & Benefits Total		\$ -	\$ -	\$ -	\$ 5,644,075
Maintenance & Operation					
43050	Repairs-bldgs & grounds	\$ -	\$ -	\$ -	\$ 20,000
43060	Utilities	-	-	-	18,900
43090	Equipment usage	-	-	-	491,124
43110	Contractual services	-	-	-	595,000
44100	Repairs to equipment	-	-	-	11,000
44120	Repairs to office equip	-	-	-	1,000
44450	Postage	-	-	-	1,000
44600	Laundry & towel service	-	-	-	1,000
44750	Liability Insurance	-	-	-	127,257
44760	Regulatory	-	-	-	8,000
44800	Membership & dues	-	-	-	13,000
45200	Maps & blue prints	-	-	-	100
45300	Small tools	-	-	-	61,000
45350	General supplies	-	-	-	401,400
47000	Miscellaneous	-	-	-	450
Maintenance & Operation Total		\$ -	\$ -	\$ -	\$ 1,750,231
TOTAL		\$ -	\$ -	\$ -	\$ 7,394,306

Notes:

* Effective FY 2017-18 Electric Works Revenue Fund (552) is under new Fund number 582.

**CITY OF GLENDALE
 GLENDALE WATER & POWER DEPARTMENT
 ELECTRIC WORKS REVENUE FUND - GWP ELECTRIC - SUBSTRUCTURE
 582-467**

		Actual 2015-16	Adopted 2016-17	Revised 2016-17	Adopted 2017-18
Salaries & Benefits					
41100	Salaries	\$ -	\$ -	\$ -	\$ 477,294
Various	Benefits	-	-	-	161,103
42700	PERS Retirement	-	-	-	126,188
42701	PERS cost sharing	-	-	-	(14,246)
42799	Salary charges in (out)	-	-	-	(75,034)
Salaries & Benefits Total		<u>\$ -</u>	<u>\$ -</u>	<u>\$ -</u>	<u>\$ 675,305</u>
Maintenance & Operation					
44750	Liability Insurance	\$ -	\$ -	\$ -	\$ 12,936
Maintenance & Operation Total		<u>\$ -</u>	<u>\$ -</u>	<u>\$ -</u>	<u>\$ 12,936</u>
TOTAL		<u><u>\$ -</u></u>	<u><u>\$ -</u></u>	<u><u>\$ -</u></u>	<u><u>\$ 688,241</u></u>

Notes:

* Effective FY 2017-18 Electric Works Revenue Fund (552) is under new Fund number 582.

**CITY OF GLENDALE
 GLENDALE WATER & POWER DEPARTMENT
 ELECTRIC WORKS REVENUE FUND - GWP POWER MANAGEMENT
 582-468**

		Actual 2015-16	Adopted 2016-17	Revised 2016-17	Adopted 2017-18
Salaries & Benefits					
41100	Salaries	\$ -	\$ -	\$ -	\$ 1,308,373
Various	Benefits	-	-	-	271,209
42700	PERS Retirement	-	-	-	346,320
42701	PERS cost sharing	-	-	-	(52,134)
42799	Salary charges in (out)	-	-	-	(35,005)
Salaries & Benefits Total		\$ -	\$ -	\$ -	\$ 1,838,763
Maintenance & Operation					
43110	Contractual services	\$ -	\$ -	\$ -	\$ 6,945,523
44250	Data communication	-	-	-	1,500
44300	Telephone	-	-	-	500
44450	Postage	-	-	-	1,400
44550	Travel	-	-	-	39,500
44650	Training	-	-	-	22,350
44700	Computer software	-	-	-	93,000
44750	Liability Insurance	-	-	-	35,457
44760	Regulatory	-	-	-	3,348,650
44800	Membership & dues	-	-	-	10,200
45050	Periodicals & newspapers	-	-	-	9,000
45100	Books	-	-	-	200
45150	Furniture & equipment	-	-	-	300
45250	Office supplies	-	-	-	400
45350	General supplies	-	-	-	700
45501	Fuel-landfill gas	-	-	-	2,472,865
45502	Fuel-natural gas	-	-	-	17,596,560
45510	Purchased power	-	-	-	106,996,854
45511	Hedging costs	-	-	-	800,000
46900	Business meetings	-	-	-	1,000
47000	Miscellaneous	-	-	-	500
Maintenance & Operation Total		\$ -	\$ -	\$ -	\$ 138,376,459
TOTAL		\$ -	\$ -	\$ -	\$ 140,215,222

Notes:

* Effective FY 2017-18 Electric Works Revenue Fund (552) is under new Fund number 582.

**CITY OF GLENDALE
 GLENDALE WATER & POWER DEPARTMENT
 ELECTRIC WORKS REVENUE FUND - GWP POWER PLANT
 582-469**

		Actual 2015-16	Adopted 2016-17	Revised 2016-17	Adopted 2017-18
Salaries & Benefits					
41100	Salaries	\$ -	\$ -	\$ -	\$ 4,658,413
41200	Overtime	-	-	-	700,000
Various	Benefits	-	-	-	1,317,699
42700	PERS Retirement	-	-	-	1,230,432
42701	PERS cost sharing	-	-	-	(152,405)
Salaries & Benefits Total		\$ -	\$ -	\$ -	\$ 7,754,139
Maintenance & Operation					
43050	Repairs-bldgs & grounds	\$ -	\$ -	\$ -	\$ 130,000
43060	Utilities	-	-	-	1,959,300
43070	Lease payments	-	-	-	2,500
43090	Equipment usage	-	-	-	38,400
43110	Contractual services	-	-	-	1,550,000
44100	Repairs to equipment	-	-	-	408,000
44120	Repairs to office equip	-	-	-	1,000
44400	Janitorial services	-	-	-	30,000
44450	Postage	-	-	-	1,000
44550	Travel	-	-	-	10,000
44600	Laundry & towel service	-	-	-	20,000
44650	Training	-	-	-	26,000
44700	Computer software	-	-	-	5,000
44750	Liability Insurance	-	-	-	145,213
44760	Regulatory	-	-	-	377,500
45100	Books	-	-	-	500
45150	Furniture & equipment	-	-	-	5,000
45170	Computer hardware	-	-	-	5,000
45250	Office supplies	-	-	-	11,000
45300	Small tools	-	-	-	15,000
45350	General supplies	-	-	-	1,029,000
46900	Business meetings	-	-	-	500
47000	Miscellaneous	-	-	-	3,000
Maintenance & Operation Total		\$ -	\$ -	\$ -	\$ 5,772,913
TOTAL		\$ -	\$ -	\$ -	\$ 13,527,052

Notes:

* Effective FY 2017-18 Electric Works Revenue Fund (552) is under new Fund number 582.

**CITY OF GLENDALE
 GLENDALE WATER & POWER DEPARTMENT
 ELECTRIC DEPRECIATION FUND - GWP ADMINISTRATION
 553-911**

	Actual 2015-16	Adopted 2016-17	Revised 2016-17	Adopted 2017-18
Maintenance & Operation				
45623 General plant allocation	\$ 99,360	\$ 1,458,815	\$ 1,458,815	\$ -
Maintenance & Operation Total	\$ 99,360	\$ 1,458,815	\$ 1,458,815	\$ -
Capital Improvement				
59999 Asset capitalization	\$ (27,403,747)	\$ -	\$ -	\$ -
Capital Improvement Total	\$ (27,403,747)	\$ -	\$ -	\$ -
TOTAL	\$ (27,304,387)	\$ 1,458,815	\$ 1,458,815	\$ -

Notes:

* Effective FY 2017-18 Electric Depreciation Fund (553) is under new Fund number 583.

**CITY OF GLENDALE
GLENDALE WATER & POWER DEPARTMENT
ELECTRIC DEPRECIATION FUND - POWER MANAGEMENT
553-921**

		Actual 2015-16	Adopted 2016-17	Revised 2016-17	Adopted 2017-18
Salaries & Benefits					
41100	Salaries	\$ 114,361	\$ -	\$ -	\$ -
41200	Overtime	12,187	-	-	-
Various	Benefits	8,113	-	-	-
Salaries & Benefits Total		\$ 134,660	\$ -	\$ -	\$ -
Maintenance & Operation					
43110	Contractual services	\$ 3,234,416	\$ -	\$ 4,059,792	\$ -
43111	Construction services	7,435,570	1,431,295	1,431,295	-
44750	Liability Insurance	4,252	-	-	-
45600	A & G overhead	101,781	54,600	54,600	-
45621	Employee benefit overhead	62,898	-	-	-
46900	Business meetings	127	-	-	-
47050	Interest on bonds	-	750,000	750,000	-
47059	Capitalized interest-water	382,803	-	-	-
Maintenance & Operation Total		\$ 11,221,848	\$ 2,235,895	\$ 6,295,687	\$ -
Capital Improvement					
51250	Equipment	\$ 147,253	\$ -	\$ -	\$ -
Capital Improvement Total		\$ 147,253	\$ -	\$ -	\$ -
Capital Outlay					
51000	Capital outlay	\$ 145,574	\$ 463,000	\$ 463,000	\$ -
Capital Outlay Total		\$ 145,574	\$ 463,000	\$ 463,000	\$ -
TOTAL		\$ 11,649,335	\$ 2,698,895	\$ 6,758,687	\$ -

Notes:

* Effective FY 2017-18 Electric Depreciation Fund (553) is under new Fund number 583.

**CITY OF GLENDALE
GLENDALE WATER & POWER DEPARTMENT
ELECTRIC DEPRECIATION FUND - ELECTRIC SERVICES
553-931**

		Actual 2015-16	Adopted 2016-17	Revised 2016-17	Adopted 2017-18
Salaries & Benefits					
41100	Salaries	\$ 1,078,743	\$ -	\$ -	\$ -
41200	Overtime	242,761	-	-	-
41300	Hourly wages	(325)	-	-	-
Various	Benefits	134,273	-	-	-
Salaries & Benefits Total		\$ 1,455,451	\$ -	\$ -	\$ -
Maintenance & Operation					
43060	Utilities	\$ 1,726	\$ -	\$ -	\$ -
43090	Equipment usage	304,261	-	-	-
43110	Contractual services	9,174,232	1,686,481	1,686,481	-
43111	Construction services	174,264	6,175,095	6,172,519	-
44450	Postage	47	-	-	-
44750	Liability Insurance	44,391	-	-	-
44760	Regulatory	106,676	-	-	-
45170	Computer hardware	8,245	-	-	-
45300	Small tools	5,631	-	-	-
45350	General supplies	2,218,763	-	-	-
45450	Printing and graphics	316	-	-	-
45512	Public benefit programs	3,800	-	-	-
45600	A & G overhead	937,967	1,065,700	1,065,700	-
45621	Employee benefit overhead	579,953	14,196	14,196	-
47010	Discount earned & lost	(2)	-	-	-
47050	Interest on bonds	-	2,136,000	2,136,000	-
47059	Capitalized interest-water	624,320	-	-	-
Maintenance & Operation Total		\$ 14,184,589	\$ 11,077,472	\$ 11,074,896	\$ -
Capital Improvement					
51200	Other improvements	\$ 548	\$ -	\$ -	\$ -
51250	Equipment	14,464	-	-	-
Capital Improvement Total		\$ 15,012	\$ -	\$ -	\$ -
Capital Outlay					
51000	Capital outlay	\$ -	\$ 533,000	\$ 533,000	\$ -
Capital Outlay Total		\$ -	\$ 533,000	\$ 533,000	\$ -
TOTAL		\$ 15,655,053	\$ 11,610,472	\$ 11,607,896	\$ -

Notes:

* Effective FY 2017-18 Electric Depreciation Fund (553) is under new Fund number 583.

**CITY OF GLENDALE
 GLENDALE WATER & POWER DEPARTMENT
 ELECTRIC DEPRECIATION FUND - PROJECTS
 583-490**

	Actual 2015-16	Adopted 2016-17	Revised 2016-17	Adopted 2017-18
Maintenance & Operation				
47055 Capitalized interest - elec	\$ -	\$ -	\$ -	\$ 2,886,000
Maintenance & Operation Total	\$ -	\$ -	\$ -	\$ 2,886,000
Capital Improvement				
51200 Other improvements	\$ -	\$ -	\$ -	\$ 1,499,000
51800 Mobile equipment	-	-	-	1,087,200
Capital Improvement Total	\$ -	\$ -	\$ -	\$ 2,586,200
Capital Outlay				
51000 Capital outlay	\$ -	\$ -	\$ -	\$ 1,013,120
Capital Outlay Total	\$ -	\$ -	\$ -	\$ 1,013,120
TOTAL	\$ -	\$ -	\$ -	\$ 6,485,320

Notes:

* Effective FY 2017-18 Electric Depreciation Fund (553) is under new Fund number 583.

**CITY OF GLENDALE
 GLENDALE WATER & POWER DEPARTMENT
 ELECTRIC CUSTOMER PAID CAPITAL FUND - ELECTRIC SERVICES
 555-931**

		Actual 2015-16	Adopted 2016-17	Revised 2016-17	Adopted 2017-18
Salaries & Benefits					
41100	Salaries	\$ 433,437	\$ -	\$ -	\$ -
41200	Overtime	72,256	-	-	-
Various	Benefits	53,077	-	-	-
Salaries & Benefits Total		\$ 558,770	\$ -	\$ -	\$ -
Maintenance & Operation					
43090	Equipment usage	\$ 75,678	\$ -	\$ -	\$ -
43110	Contractual services	1,975	102,750	102,750	-
43111	Construction services	-	1,254,768	1,254,768	-
44750	Liability Insurance	16,991	-	-	-
44760	Regulatory	1,007	-	-	-
45300	Small tools	24	-	-	-
45350	General supplies	209,358	-	-	-
45600	A & G overhead	385,162	537,233	537,233	-
Maintenance & Operation Total		\$ 690,196	\$ 1,894,751	\$ 1,894,751	\$ -
Capital Improvement					
59999	Asset capitalization	\$ (1,248,966)	\$ -	\$ -	\$ -
Capital Improvement Total		\$ (1,248,966)	\$ -	\$ -	\$ -
TOTAL		\$ -	\$ 1,894,751	\$ 1,894,751	\$ -

Notes:

* Effective FY 2017-18 Electric Customer Paid Capital Fund (555) is under new Fund number 585.

**CITY OF GLENDALE
 GLENDALE WATER & POWER DEPARTMENT
 ELECTRIC CUSTOMER CAPITAL FUND - GWP PROJECT ORG
 585-490**

		Actual 2015-16		Adopted 2016-17		Revised 2016-17		Adopted 2017-18
Capital Improvement								
51200	Other improvements	\$ -		\$ -		\$ -		\$ 1,819,781
Capital Improvement Total		\$ -		\$ -		\$ -		\$ 1,819,781
TOTAL		\$ -		\$ -		\$ -		\$ 1,819,781

Notes:

* Effective FY 2017-18 Electric Customer Paid Capital Fund (555) is under new Fund number 585.

**CITY OF GLENDALE
 GLENDALE WATER & POWER DEPARTMENT
 ENERGY COST ADJUSTMENT CHARGE FUND - POWER MANAGEMENT
 556-921**

	Actual 2015-16	Adopted 2016-17	Revised 2016-17	Adopted 2017-18
Maintenance & Operation				
45509 ECAC variance	\$ 5,757,769	\$ -	\$ -	\$ -
Maintenance & Operation Total	\$ 5,757,769	\$ -	\$ -	\$ -
TOTAL	\$ 5,757,769	\$ -	\$ -	\$ -

Notes:

* Effective FY 2017-18 Energy Cost Adjustment Charge Fund (556) is under new Fund number 586.

**CITY OF GLENDALE
 GLENDALE WATER & POWER DEPARTMENT
 REGULATORY ADJUSTMENT CHARGE FUND - POWER MANAGEMENT
 557-921**

	Actual 2015-16	Adopted 2016-17	Revised 2016-17	Adopted 2017-18
Maintenance & Operation				
44761 RAC variance	\$ 8,160,710	\$ -	\$ -	\$ -
Maintenance & Operation Total	\$ 8,160,710	\$ -	\$ -	\$ -
TOTAL	\$ 8,160,710	\$ -	\$ -	\$ -

Notes:

* Effective FY 2017-18 Regulatory Adjustment Charge Fund (557) is under new Fund number 587.

**CITY OF GLENDALE
 GLENDALE WATER & POWER DEPARTMENT
 WATER WORKS REVENUE FUND - GWP ADMINISTRATION
 572-911**

		Actual 2015-16	Adopted 2016-17	Revised 2016-17	Adopted 2017-18
Maintenance & Operation					
43110	Contractual services	\$ 9,597	\$ 50,000	\$ 50,000	\$ -
46000	Depreciation	5,843,855	6,220,000	6,220,000	-
47050	Interest on bonds	2,689,326	3,388,000	3,388,000	-
Maintenance & Operation Total		\$ 8,542,778	\$ 9,658,000	\$ 9,658,000	\$ -
TOTAL		\$ 8,542,778	\$ 9,658,000	\$ 9,658,000	\$ -

Notes:

* Effective FY 2017-18 Water Works Revenue Fund (572) is under new Fund number 592.

**CITY OF GLENDALE
GLENDALE WATER & POWER DEPARTMENT
WATER WORKS REVENUE FUND - WATER SERVICES
572-951**

		Actual 2015-16	Adopted 2016-17	Revised 2016-17	Adopted 2017-18
Salaries & Benefits					
41100	Salaries	\$ 4,219,702	\$ 5,091,536	\$ 5,091,536	\$ -
41200	Overtime	250,145	359,845	359,845	-
41300	Hourly wages	53,804	49,075	49,075	-
Various	Benefits	1,443,795	1,627,025	1,670,431	-
42601	PARS supplemental retirement	108,577	108,577	108,577	-
42700	PERS Retirement	259,698 **	1,150,125	1,150,125	-
42701	PERS cost sharing	(92,374)	(175,525)	(175,525)	-
42799	Salary charges in (out)	-	(836,305)	(836,305)	-
Salaries & Benefits Total		\$ 6,243,346	\$ 7,374,353	\$ 7,417,759	\$ -
Maintenance & Operation					
43050	Repairs-bldgs & grounds	\$ 65,604	\$ 87,446	\$ 87,446	\$ -
43060	Utilities	2,735,092	3,518,556	3,518,556	-
43090	Equipment usage	294,162	446,003	446,003	-
43110	Contractual services	1,487,749	1,838,707	1,838,707	-
43111	Construction services	-	183,000	183,000	-
44100	Repairs to equipment	80,023	113,200	113,200	-
44120	Repairs to office equip	-	2,000	2,000	-
44250	Data communication	-	4,300	4,300	-
44350	Vehicle maintenance	773	-	-	-
44400	Janitorial services	675	-	-	-
44450	Postage	4,598	10,230	10,230	-
44550	Travel	2,542	16,885	16,885	-
44600	Laundry & towel service	5,148	17,000	17,000	-
44650	Training	28,576	44,580	44,580	-
44700	Computer software	18,300	42,500	42,500	-
44750	Liability Insurance	151,992	148,438	148,438	-
44760	Regulatory	191,302	233,150	233,150	-
44800	Membership & dues	28,128	73,900	73,900	-
45050	Periodicals & newspapers	40	-	-	-
45100	Books	306	800	800	-
45150	Furniture & equipment	-	500	500	-
45170	Computer hardware	-	5,000	5,000	-
45250	Office supplies	9,270	4,200	4,200	-
45300	Small tools	16,198	26,500	26,500	-
45350	General supplies	331,026	659,850	659,850	-
45400	Reports & publications	-	700	700	-
45450	Printing and graphics	24,242	25,200	25,200	-
45520	Purchased water	14,612,457	18,756,145	18,756,145	-
45600	A & G overhead	6,262,669	6,768,495	6,768,495	-
45621	Employee benefit overhead	(104,938)	-	-	-
46900	Business meetings	270	3,000	3,000	-
47000	Miscellaneous	4,502	16,100	16,100	-
47010	Discount earned & lost	(3)	-	-	-
Maintenance & Operation Total		\$ 26,250,703	\$ 33,046,385	\$ 33,046,385	\$ -
TOTAL		\$ 32,494,048	\$ 40,420,738	\$ 40,464,144	\$ -

Notes:

* Effective FY 2017-18 Water Works Revenue Fund (572) is under new Fund number 592.

** PERS Retirement costs include PERS funding reversal due to GASB 68 under accounts 42703 and 42704.

**CITY OF GLENDALE
 GLENDALE WATER & POWER DEPARTMENT
 WATER WORKS REVENUE FUND - CUSTOMER SERVICES
 572-971**

	Actual 2015-16	Adopted 2016-17	Revised 2016-17	Adopted 2017-18
Maintenance & Operation				
45610 Section overhead	\$ 14,387	\$ -	\$ -	\$ -
45622 Customer services allocation	1,752,012	1,898,942	1,898,942	-
Maintenance & Operation Total	\$ 1,766,399	\$ 1,898,942	\$ 1,898,942	\$ -
TOTAL	\$ 1,766,399	\$ 1,898,942	\$ 1,898,942	\$ -

Notes:

* Effective FY 2017-18 Water Works Revenue Fund (572) is under new Fund number 592.

**CITY OF GLENDALE
 GLENDALE WATER & POWER DEPARTMENT
 WATER WORKS REVENUE FUND - GWP ADMINISTRATION
 592-450**

		Actual 2015-16	Adopted 2016-17	Revised 2016-17	Adopted 2017-18
Salaries & Benefits					
41100	Salaries	\$ -	\$ -	\$ -	\$ 196,479
41200	Overtime	-	-	-	440
41300	Hourly wages	-	-	-	13,061
Various	Benefits	-	-	-	50,116
42700	PERS Retirement	-	-	-	55,299
42701	PERS cost sharing	-	-	-	(8,325)
Salaries & Benefits Total		\$ -	\$ -	\$ -	\$ 307,070
Maintenance & Operation					
43060	Utilities	\$ -	\$ -	\$ -	\$ 16,170
43110	Contractual services	-	-	-	159,500
43150	Cost allocation charge	-	-	-	3,612,593
44120	Repairs to office equip	-	-	-	440
44351	Fleet / equip rental charge	-	-	-	471,601
44352	ISD service charge	-	-	-	803,191
44353	Building Maint. Serv. Charge	-	-	-	497,089
44450	Postage	-	-	-	220
44550	Travel	-	-	-	4,400
44650	Training	-	-	-	1,100
44750	Liability Insurance	-	-	-	5,690
44751	Insurance/surety bond premium	-	-	-	115,500
44760	Regulatory	-	-	-	4,400
44800	Membership & dues	-	-	-	352
45050	Periodicals & newspapers	-	-	-	440
45250	Office supplies	-	-	-	11,110
45350	General supplies	-	-	-	22,000
45450	Printing and graphics	-	-	-	5,500
46000	Depreciation	-	-	-	6,560,000
46900	Business meetings	-	-	-	1,540
47000	Miscellaneous	-	-	-	6,820
47050	Interest on bonds	-	-	-	2,372,040
Maintenance & Operation Total		\$ -	\$ -	\$ -	\$ 14,671,696
TOTAL		\$ -	\$ -	\$ -	\$ 14,978,766

Notes:

* Effective FY 2017-18 Water Works Revenue Fund (572) is under new Fund number 592.

**CITY OF GLENDALE
 GLENDALE WATER & POWER DEPARTMENT
 WATER WORKS REVENUE FUND - GWP ADMINISTRATION - CUSTOMER SERVICES
 592-451**

		Actual 2015-16	Adopted 2016-17	Revised 2016-17	Adopted 2017-18
Salaries & Benefits					
41100	Salaries	\$ -	\$ -	\$ -	\$ 824,151
41200	Overtime	-	-	-	9,720
41300	Hourly wages	-	-	-	5,241
Various	Benefits	-	-	-	203,603
42700	PERS Retirement	-	-	-	218,144
42701	PERS cost sharing	-	-	-	(32,840)
Salaries & Benefits Total		\$ -	\$ -	\$ -	\$ 1,228,019
Maintenance & Operation					
43090	Equipment usage	\$ -	\$ -	\$ -	\$ 29,280
43110	Contractual services	-	-	-	505,836
43150	Cost allocation charge	-	-	-	150,503
44351	Fleet / equip rental charge	-	-	-	15,645
44352	ISD service charge	-	-	-	174,150
44353	Building Maint. Serv. Charge	-	-	-	107,756
44450	Postage	-	-	-	3,840
44550	Travel	-	-	-	3,180
44650	Training	-	-	-	1,440
44750	Liability Insurance	-	-	-	22,743
44800	Membership & dues	-	-	-	180
45150	Furniture & equipment	-	-	-	2,400
45250	Office supplies	-	-	-	4,800
45300	Small tools	-	-	-	720
45350	General supplies	-	-	-	960
46500	Uncollectible accounts	-	-	-	69,600
46900	Business meetings	-	-	-	360
47000	Miscellaneous	-	-	-	312
Maintenance & Operation Total		\$ -	\$ -	\$ -	\$ 1,093,705
TOTAL		\$ -	\$ -	\$ -	\$ 2,321,724

Notes:

* Effective FY 2017-18 Water Works Revenue Fund (572) is under new Fund number 592.

**CITY OF GLENDALE
 GLENDALE WATER & POWER DEPARTMENT
 WATER WORKS REVENUE FUND - GWP ADMINISTRATION - CONSERVATION & UTILITY MODERNIZATION
 592-452**

		Actual 2015-16	Adopted 2016-17	Revised 2016-17	Adopted 2017-18
Salaries & Benefits					
41100	Salaries	\$ -	\$ -	\$ -	\$ 126,346
41200	Overtime	-	-	-	11,280
41300	Hourly wages	-	-	-	8,565
Various	Benefits	-	-	-	33,635
42700	PERS Retirement	-	-	-	35,711
42701	PERS cost sharing	-	-	-	(5,378)
Salaries & Benefits Total		\$ -	\$ -	\$ -	\$ 210,159
Maintenance & Operation					
43090	Equipment usage	\$ -	\$ -	\$ -	\$ 3,300
43110	Contractual services	-	-	-	731,282
44100	Repairs to equipment	-	-	-	5,258
44200	Advertising	-	-	-	4,400
44450	Postage	-	-	-	33,000
44550	Travel	-	-	-	5,789
44650	Training	-	-	-	8,239
44700	Computer software	-	-	-	1,980
44750	Liability Insurance	-	-	-	3,964
44800	Membership & dues	-	-	-	660
45050	Periodicals & newspapers	-	-	-	550
45150	Furniture & equipment	-	-	-	31,218
45170	Computer hardware	-	-	-	5,720
45250	Office supplies	-	-	-	1,210
45350	General supplies	-	-	-	5,500
45450	Printing and graphics	-	-	-	4,400
46900	Business meetings	-	-	-	110
47000	Miscellaneous	-	-	-	5,192
Maintenance & Operation Total		\$ -	\$ -	\$ -	\$ 851,772
TOTAL		\$ -	\$ -	\$ -	\$ 1,061,931

Notes:

* Effective FY 2017-18 Water Works Revenue Fund (572) is under new Fund number 592.

**CITY OF GLENDALE
 GLENDALE WATER & POWER DEPARTMENT
 WATER WORKS REVENUE FUND - GWP ADM - UTILITY FINANCE
 592-453**

		Actual 2015-16	Adopted 2016-17	Revised 2016-17	Adopted 2017-18
Salaries & Benefits					
41100	Salaries	\$ -	\$ -	\$ -	\$ 79,469
Various	Benefits	-	-	-	22,390
42700	PERS Retirement	-	-	-	21,011
42701	PERS cost sharing	-	-	-	(3,164)
Salaries & Benefits Total		<u>\$ -</u>	<u>\$ -</u>	<u>\$ -</u>	<u>\$ 119,706</u>
Maintenance & Operation					
44750	Liability Insurance	\$ -	\$ -	\$ -	\$ 2,155
Maintenance & Operation Total		<u>\$ -</u>	<u>\$ -</u>	<u>\$ -</u>	<u>\$ 2,155</u>
TOTAL		<u><u>\$ -</u></u>	<u><u>\$ -</u></u>	<u><u>\$ -</u></u>	<u><u>\$ 121,861</u></u>

Notes:

* Effective FY 2017-18 Water Works Revenue Fund (572) is under new Fund number 592.

**CITY OF GLENDALE
 GLENDALE WATER & POWER DEPARTMENT
 WATER WORKS REVENUE FUND - GWP ADMINISTRATION- ENVIRONMENTAL & SAFETY
 592-454**

		Actual 2015-16	Adopted 2016-17	Revised 2016-17	Adopted 2017-18
Salaries & Benefits					
41100	Salaries	\$ -	\$ -	\$ -	\$ 97,011
41200	Overtime	-	-	-	1,200
Various	Benefits	-	-	-	18,589
42700	PERS Retirement	-	-	-	25,550
42701	PERS cost sharing	-	-	-	(3,846)
Salaries & Benefits Total		\$ -	\$ -	\$ -	\$ 138,504
Maintenance & Operation					
43110	Contractual services	\$ -	\$ -	\$ -	\$ 57,200
44550	Travel	-	-	-	2,200
44650	Training	-	-	-	15,400
44750	Liability Insurance	-	-	-	2,662
44800	Membership & dues	-	-	-	264
45050	Periodicals & newspapers	-	-	-	110
45100	Books	-	-	-	110
45350	General supplies	-	-	-	22,000
45400	Reports & publications	-	-	-	308
45450	Printing and graphics	-	-	-	880
46900	Business meetings	-	-	-	220
47000	Miscellaneous	-	-	-	15,400
Maintenance & Operation Total		\$ -	\$ -	\$ -	\$ 116,754
TOTAL		\$ -	\$ -	\$ -	\$ 255,258

Notes:

* Effective FY 2017-18 Water Works Revenue Fund (572) is under new Fund number 592.

**CITY OF GLENDALE
 GLENDALE WATER & POWER DEPARTMENT
 WATER WORKS REVENUE FUND - GWP ADM - UTILITY OPERATION CENTER & WAREHOUSE
 592-455**

		Actual 2015-16	Adopted 2016-17	Revised 2016-17	Adopted 2017-18
Salaries & Benefits					
41100	Salaries	\$ -	\$ -	\$ -	\$ 73,780
41300	Hourly wages	-	-	-	4,561
Various	Benefits	-	-	-	20,710
42700	PERS Retirement	-	-	-	20,659
42701	PERS cost sharing	-	-	-	(3,109)
Salaries & Benefits Total		\$ -	\$ -	\$ -	\$ 116,601
Maintenance & Operation					
43050	Repairs-bldgs & grounds	\$ -	\$ -	\$ -	\$ 30,800
43060	Utilities	-	-	-	15,015
43070	Lease payments	-	-	-	12,540
43090	Equipment usage	-	-	-	253
43110	Contractual services	-	-	-	64,900
44350	Vehicle maintenance	-	-	-	110
44400	Janitorial services	-	-	-	5,394
44450	Postage	-	-	-	110
44600	Laundry & towel service	-	-	-	6,270
44750	Liability Insurance	-	-	-	2,123
44760	Regulatory	-	-	-	356
44800	Membership & dues	-	-	-	165
45050	Periodicals & newspapers	-	-	-	110
45100	Books	-	-	-	110
45150	Furniture & equipment	-	-	-	550
45250	Office supplies	-	-	-	1,210
45300	Small tools	-	-	-	330
45350	General supplies	-	-	-	3,932
45450	Printing and graphics	-	-	-	220
46900	Business meetings	-	-	-	110
47000	Miscellaneous	-	-	-	9,020
47010	Discount earned & lost	-	-	-	44,000
Maintenance & Operation Total		\$ -	\$ -	\$ -	\$ 197,628
TOTAL		\$ -	\$ -	\$ -	\$ 314,229

Notes:

* Effective FY 2017-18 Water Works Revenue Fund (572) is under new Fund number 592.

**CITY OF GLENDALE
 GLENDALE WATER & POWER DEPARTMENT
 WATER WORKS REVENUE FUND - GWP YARD ADMINISTRATION
 592-456**

		Actual 2015-16	Adopted 2016-17	Revised 2016-17	Adopted 2017-18
Salaries & Benefits					
41100	Salaries	\$ -	\$ -	\$ -	\$ 21,543
Various	Benefits	-	-	-	4,864
42700	PERS Retirement	-	-	-	5,672
42701	PERS cost sharing	-	-	-	(854)
Salaries & Benefits Total		<u>\$ -</u>	<u>\$ -</u>	<u>\$ -</u>	<u>\$ 31,225</u>
Maintenance & Operation					
44750	Liability Insurance	\$ -	\$ -	\$ -	\$ 584
Maintenance & Operation Total		<u>\$ -</u>	<u>\$ -</u>	<u>\$ -</u>	<u>\$ 584</u>
TOTAL		<u><u>\$ -</u></u>	<u><u>\$ -</u></u>	<u><u>\$ -</u></u>	<u><u>\$ 31,809</u></u>

Notes:

* Effective FY 2017-18 Water Works Revenue Fund (572) is under new Fund number 592.

**CITY OF GLENDALE
 GLENDALE WATER & POWER DEPARTMENT
 WATER WORKS REVENUE FUND - GWP WATER - ENGINEERING
 592-470**

		Actual 2015-16	Adopted 2016-17	Revised 2016-17	Adopted 2017-18
Salaries & Benefits					
41100	Salaries	\$ -	\$ -	\$ -	\$ 1,422,573
41200	Overtime	-	-	-	15,750
41300	Hourly wages	-	-	-	101,973
Various	Benefits	-	-	-	312,686
42700	PERS Retirement	-	-	-	388,005
42701	PERS cost sharing	-	-	-	(58,408)
42799	Salary charges in (out)	-	-	-	(218,258)
Salaries & Benefits Total		\$ -	\$ -	\$ -	\$ 1,964,321
Maintenance & Operation					
43060	Utilities	\$ -	\$ -	\$ -	\$ 3,567,119
43090	Equipment usage	-	-	-	500
43110	Contractual services	-	-	-	955,485
44550	Travel	-	-	-	3,990
44650	Training	-	-	-	3,910
44700	Computer software	-	-	-	4,500
44750	Liability Insurance	-	-	-	41,741
44760	Regulatory	-	-	-	500
44800	Membership & dues	-	-	-	900
45100	Books	-	-	-	300
45170	Computer hardware	-	-	-	3,000
45250	Office supplies	-	-	-	1,150
45350	General supplies	-	-	-	150
46900	Business meetings	-	-	-	500
47000	Miscellaneous	-	-	-	100
Maintenance & Operation Total		\$ -	\$ -	\$ -	\$ 4,583,845
TOTAL		\$ -	\$ -	\$ -	\$ 6,548,166

Notes:

* Effective FY 2017-18 Water Works Revenue Fund (572) is under new Fund number 592.

**CITY OF GLENDALE
 GLENDALE WATER & POWER DEPARTMENT
 WATER WORKS REVENUE FUND - GWP WATER DISTRIBUTION
 592-471**

		Actual 2015-16	Adopted 2016-17	Revised 2016-17	Adopted 2017-18
Salaries & Benefits					
41100	Salaries	\$ -	\$ -	\$ -	\$ 1,900,914
41200	Overtime	-	-	-	61,555
Various	Benefits	-	-	-	693,036
42700	PERS Retirement	-	-	-	495,226
42701	PERS cost sharing	-	-	-	(62,609)
42799	Salary charges in (out)	-	-	-	(308,292)
Salaries & Benefits Total		\$ -	\$ -	\$ -	\$ 2,779,830
Maintenance & Operation					
43050	Repairs-bldgs & grounds	\$ -	\$ -	\$ -	\$ 2,500
43060	Utilities	-	-	-	111,300
43090	Equipment usage	-	-	-	111,500
43111	Construction services	-	-	-	180,000
44100	Repairs to equipment	-	-	-	11,500
44250	Data communication	-	-	-	4,300
44450	Postage	-	-	-	200
44750	Liability Insurance	-	-	-	53,184
44760	Regulatory	-	-	-	40,650
45250	Office supplies	-	-	-	50
45300	Small tools	-	-	-	22,000
45350	General supplies	-	-	-	255,000
47000	Miscellaneous	-	-	-	1,000
Maintenance & Operation Total		\$ -	\$ -	\$ -	\$ 793,184
TOTAL		\$ -	\$ -	\$ -	\$ 3,573,014

Notes:

* Effective FY 2017-18 Water Works Revenue Fund (572) is under new Fund number 592.

**CITY OF GLENDALE
GLENDALE WATER & POWER DEPARTMENT
WATER WORKS REVENUE FUND - GWP WATER OPERATION
592-472**

		Actual 2015-16	Adopted 2016-17	Revised 2016-17	Adopted 2017-18
Salaries & Benefits					
41100	Salaries	\$ -	\$ -	\$ -	\$ 1,015,251
41200	Overtime	-	-	-	232,695
41300	Hourly wages	-	-	-	24,939
Various	Benefits	-	-	-	316,107
42700	PERS Retirement	-	-	-	266,115
42701	PERS cost sharing	-	-	-	(34,933)
Salaries & Benefits Total		\$ -	\$ -	\$ -	\$ 1,820,174
Maintenance & Operation					
43050	Repairs-bldgs & grounds	\$ -	\$ -	\$ -	\$ 76,554
43060	Utilities	-	-	-	16,065
43090	Equipment usage	-	-	-	268,800
43110	Contractual services	-	-	-	705,000
44100	Repairs to equipment	-	-	-	95,500
44120	Repairs to office equip	-	-	-	2,000
44450	Postage	-	-	-	30
44550	Travel	-	-	-	7,660
44600	Laundry & towel service	-	-	-	10,000
44650	Training	-	-	-	32,800
44700	Computer software	-	-	-	62,500
44750	Liability Insurance	-	-	-	34,495
44760	Regulatory	-	-	-	150,200
44800	Membership & dues	-	-	-	72,500
45100	Books	-	-	-	500
45150	Furniture & equipment	-	-	-	500
45170	Computer hardware	-	-	-	2,000
45250	Office supplies	-	-	-	3,000
45300	Small tools	-	-	-	500
45350	General supplies	-	-	-	181,500
45400	Reports & publications	-	-	-	700
45450	Printing and graphics	-	-	-	30,200
45520	Purchased water	-	-	-	18,756,145
46900	Business meetings	-	-	-	1,500
47000	Miscellaneous	-	-	-	3,900
Maintenance & Operation Total		\$ -	\$ -	\$ -	\$ 20,514,549
TOTAL		\$ -	\$ -	\$ -	\$ 22,334,723

Notes:

* Effective FY 2017-18 Water Works Revenue Fund (572) is under new Fund number 592.

**CITY OF GLENDALE
 GLENDALE WATER & POWER DEPARTMENT
 WATER WORKS REVENUE FUND - GWP WATER QUALITY
 592-473**

		Actual 2015-16	Adopted 2016-17	Revised 2016-17	Adopted 2017-18
Salaries & Benefits					
41100	Salaries	\$ -	\$ -	\$ -	\$ 655,677
41200	Overtime	-	-	-	20,000
Various	Benefits	-	-	-	227,482
42700	PERS Retirement	-	-	-	173,430
42701	PERS cost sharing	-	-	-	(21,602)
Salaries & Benefits Total		\$ -	\$ -	\$ -	\$ 1,054,987
Maintenance & Operation					
43050	Repairs-bldgs & grounds	\$ -	\$ -	\$ -	\$ 946
43090	Equipment usage	-	-	-	16,735
43110	Contractual services	-	-	-	340,000
44100	Repairs to equipment	-	-	-	3,000
44450	Postage	-	-	-	10,000
44750	Liability Insurance	-	-	-	18,311
44760	Regulatory	-	-	-	40,000
44800	Membership & dues	-	-	-	500
45350	General supplies	-	-	-	220,000
45450	Printing and graphics	-	-	-	30,000
Maintenance & Operation Total		\$ -	\$ -	\$ -	\$ 679,492
TOTAL		\$ -	\$ -	\$ -	\$ 1,734,479

Notes:

* Effective FY 2017-18 Water Works Revenue Fund (572) is under new Fund number 592.

**CITY OF GLENDALE
 GLENDALE WATER & POWER DEPARTMENT
 WATER DEPRECIATION FUND - GWP ADMINISTRATION
 573-911**

	Actual 2015-16	Adopted 2016-17	Revised 2016-17	Adopted 2017-18
Maintenance & Operation				
45623 General plant allocation	\$ 51,185	\$ 785,515	\$ 785,515	\$ -
Maintenance & Operation Total	\$ 51,185	\$ 785,515	\$ 785,515	\$ -
Capital Improvement				
59999 Asset capitalization	\$ (5,620,507)	\$ -	\$ -	\$ -
Capital Improvement Total	\$ (5,620,507)	\$ -	\$ -	\$ -
TOTAL	\$ (5,569,322)	\$ 785,515	\$ 785,515	\$ -

Notes:

* Effective FY 2017-18 Water Depreciation Fund (573) is under new Fund number 593.

**CITY OF GLENDALE
 GLENDALE WATER & POWER DEPARTMENT
 WATER DEPRECIATION FUND - WATER SERVICES
 573-951**

		Actual 2015-16	Adopted 2016-17	Revised 2016-17	Adopted 2017-18
Salaries & Benefits					
41100	Salaries	\$ 193,997	\$ -	\$ -	\$ -
41200	Overtime	13,804	-	-	-
41300	Hourly wages	24,394	-	-	-
Various	Benefits	22,216	-	-	-
Salaries & Benefits Total		\$ 254,412	\$ -	\$ -	\$ -
Maintenance & Operation					
43090	Equipment usage	\$ 27,449	\$ -	\$ -	\$ -
43110	Contractual services	706,365	-	-	-
43111	Construction services	3,264,539	2,348,266	2,489,572	-
44100	Repairs to equipment	1,881	-	-	-
44450	Postage	548	-	-	-
44750	Liability Insurance	7,802	-	-	-
44760	Regulatory	14,777	-	-	-
45350	General supplies	86,352	-	-	-
45600	A & G overhead	329,241	339,337	339,337	-
45621	Employee benefit overhead	104,938	-	-	-
47050	Interest on bonds	-	609,500	609,500	-
47059	Capitalized interest-water	634,513	-	-	-
Maintenance & Operation Total		\$ 5,178,405	\$ 3,297,103	\$ 3,438,409	\$ -
Capital Improvement					
51800	Mobile equipment	\$ 136,505	\$ -	\$ -	\$ -
Capital Improvement Total		\$ 136,505	\$ -	\$ -	\$ -
Capital Outlay					
51000	Capital outlay	\$ -	\$ 140,000	\$ 140,000	\$ -
Capital Outlay Total		\$ -	\$ 140,000	\$ 140,000	\$ -
TOTAL		\$ 5,569,322	\$ 3,437,103	\$ 3,578,409	\$ -

Notes:

* Effective FY 2017-18 Water Depreciation Fund (573) is under new Fund number 593.

**CITY OF GLENDALE
 GLENDALE WATER & POWER DEPARTMENT
 WATER DEPRECIATION FUND - PROJECTS
 593-490**

		Actual 2015-16	Adopted 2016-17	Revised 2016-17	Adopted 2017-18
Maintenance & Operation					
47059	Capitalized interest-water	\$ -	\$ -	\$ -	\$ 635,000
Maintenance & Operation Total		<u>\$ -</u>	<u>\$ -</u>	<u>\$ -</u>	<u>\$ 635,000</u>
Capital Improvement					
51200	Other improvements	\$ -	\$ -	\$ -	\$ 2,057,000
51800	Mobile equipment	-	-	-	253,800
Capital Improvement Total		<u>\$ -</u>	<u>\$ -</u>	<u>\$ -</u>	<u>\$ 2,310,800</u>
Capital Outlay					
51000	Capital outlay	\$ -	\$ -	\$ -	\$ 37,880
Capital Outlay Total		<u>\$ -</u>	<u>\$ -</u>	<u>\$ -</u>	<u>\$ 37,880</u>
TOTAL		<u><u>\$ -</u></u>	<u><u>\$ -</u></u>	<u><u>\$ -</u></u>	<u><u>\$ 2,983,680</u></u>

Notes:

* Effective FY 2017-18 Water Depreciation Fund (573) is under new Fund number 593.

**CITY OF GLENDALE
 GLENDALE WATER & POWER DEPARTMENT
 WATER CUSTOMER PAID CAPITAL FUND - WATER SERVICES
 575-951**

		Actual 2015-16	Adopted 2016-17	Revised 2016-17	Adopted 2017-18
Salaries & Benefits					
41100	Salaries	\$ 149,986	\$ -	\$ -	\$ -
41200	Overtime	30,949	-	-	-
41300	Hourly wages	220	-	-	-
Various	Benefits	24,391	-	-	-
Salaries & Benefits Total		\$ 205,545	\$ -	\$ -	\$ -
Maintenance & Operation					
43090	Equipment usage	\$ 54,966	\$ -	\$ -	\$ -
43110	Contractual services	91,378	-	-	-
43111	Construction services	-	1,028,055	1,028,055	-
44750	Liability Insurance	6,087	-	-	-
44760	Regulatory	36,311	-	-	-
45350	General supplies	221,689	-	-	-
45600	A & G overhead	229,689	441,585	441,585	-
Maintenance & Operation Total		\$ 640,121	\$ 1,469,640	\$ 1,469,640	\$ -
Capital Improvement					
59999	Asset capitalization	\$ (845,666)	\$ -	\$ -	\$ -
Capital Improvement Total		\$ (845,666)	\$ -	\$ -	\$ -
TOTAL		\$ -	\$ 1,469,640	\$ 1,469,640	\$ -

Notes:

* Effective FY 2017-18 Water Customer Capital Fund (575) is under new Fund number 595.

**CITY OF GLENDALE
 GLENDALE WATER & POWER DEPARTMENT
 WATER CUSTOMER CAPITAL FUND - PROJECTS
 595-490**

		Actual 2015-16	Adopted 2016-17	Revised 2016-17	Adopted 2017-18
Capital Improvement					
51200	Other improvements	\$ -	\$ -	\$ -	\$ 1,471,000
Capital Improvement Total		\$ -	\$ -	\$ -	\$ 1,471,000
TOTAL		\$ -	\$ -	\$ -	\$ 1,471,000

Notes:

* Effective FY 2017-18 Water Customer Capital Fund (575) is under new Fund number 595.

**CITY OF GLENDALE
GLENDALE WATER & POWER DEPARTMENT
PERSONNEL CLASSIFICATION DETAIL**

Classification	Actual 2015-16	Adopted 2016-17	Revised 2016-17	Adopted 2017-18
<u>Salaried Positions</u>				
Administrative Assistant	1.00	1.00	1.00	1.00
Assistant Engineering Technician	1.00	1.00	1.00	1.00
Assistant Environmental Technician	0.50	1.00	1.00	1.00
Assistant General Manager	1.00	2.00	2.00	2.00
Assistant IT Applications Specialist	3.00	3.00	3.00	3.00
Business Account Representative	1.00	1.00	1.00	1.00
Business Transformer & Marketing Administrator	1.00	1.00	1.00	1.00
Chief Assistant General Manager	1.00	1.00	1.00	1.00
Chief Assistant General Manager/Elec&Pwr	-	-	1.00	1.00
Civil Engineer I	-	1.00	-	-
Civil Engineer II	2.00	2.00	2.00	2.00
Civil Engineering Assistant	3.00	2.00	3.00	3.00
Civil Engineering Associate	1.00	1.00	1.00	1.00
Community Outreach Assistant	2.00	2.00	2.00	2.00
Community Outreach Associate	1.00	-	-	-
Customer Service Administrator	1.00	1.00	1.00	1.00
Customer Service Field Supervisor	1.00	1.00	1.00	1.00
Customer Service Field Technician	7.00	7.00	7.00	7.00
Customer Service Operation Manager	2.00	2.00	2.00	2.00
Customer Service Representative	1.00	1.00	1.00	1.00
Customer Service Utility Representative	29.00	29.00	29.00	29.00
Deputy Chief Information Officer	-	-	-	1.00
Deputy General Manager / GWP	1.00	-	-	-
Electrical Engineer I	3.00	3.00	3.00	3.00
Electrical Engineer II	2.00	2.00	2.00	3.00
Electrical Engineering Assistant	3.00	2.00	2.00	2.00
Electrical Engineering Associate	2.00	3.00	3.00	3.00
Electrical Helper	3.00	3.00	3.00	3.00
Electrical Line Mechanic	9.00	9.00	8.00	8.00
Electrical Line Mechanic Apprentice	10.00	10.00	9.00	9.00
Electrical Line Mechanic Supervisor I	9.00	9.00	9.00	9.00
Electrical Line Mechanic Supervisor II	4.00	4.00	4.00	4.00
Electrical Mechanic Assistant	3.00	2.00	3.00	3.00
Electrical Services Administrator	-	-	1.00	1.00
Electrical Service Planner	4.00	4.00	3.00	3.00
Electrical Superintendent-Const, Trans&Di	1.00	1.00	1.00	1.00
Electrical Superintendent-SubMeter&Comm	1.00	1.00	1.00	1.00
Electrical System Dispatcher	3.00	3.00	3.00	3.00
Electrical System Dispatcher Supervisor	1.00	1.00	1.00	1.00
Electrical Test Supervisor	1.00	1.00	1.00	1.00
Electrical Test Technician II	8.00	8.00	8.00	8.00
Energy Marketer/Trader	3.00	3.00	3.00	2.00
Energy Trading Manager	1.00	1.00	1.00	1.00
Engineering Aide	1.00	1.00	1.00	1.00
Engineering Technician	6.00	6.00	6.00	6.00
Environmental Program Administrator	0.50	1.00	1.00	1.00
Environmental Program Specialist	1.00	1.00	1.00	1.00
Facilities Services Coordinator	1.00	1.00	1.00	1.00
Finance Administrator	1.00	1.00	-	-
General Manager-GWP	1.00	1.00	1.00	1.00
Human Resources Analyst	-	0.50	-	-
Human Resources Assistant	-	-	0.50	0.50

**CITY OF GLENDALE
GLENDALE WATER & POWER DEPARTMENT
PERSONNEL CLASSIFICATION DETAIL**

Classification	Actual 2015-16	Adopted 2016-17	Revised 2016-17	Adopted 2017-18
Information Services Administrator	1.00	1.00	1.00	-
Integrated Resources Plan Administrator	1.00	1.00	-	-
IT Applications Specialist	1.00	1.00	1.00	1.00
Line Clearance Forestry Supervisor I	1.00	2.00	2.00	2.00
Mechanical Engineer I	1.00	1.00	1.00	1.00
Office Services Specialist II	1.00	1.00	1.00	1.00
Office Services Supervisor	1.00	1.00	1.00	1.00
Power Contracts Manager	1.00	1.00	1.00	1.00
Power Line Truck Operator	2.00	2.00	2.00	2.00
Power Planning Manager	1.00	1.00	1.00	1.00
Power Plant Control Operator	18.00	18.00	15.00	15.00
Power Plant Control Operator Apprentice	-	-	4.00	4.00
Power Plant Inst & Cntrl Supervisor	1.00	1.00	1.00	1.00
Power Plant Maintenance Supervisor	-	-	1.00	1.00
Power Plant Mechanic	4.00	4.00	4.00	4.00
Power Plant Mechanic Apprentice	5.00	5.00	5.00	5.00
Power Plant Mechanic Assistant	1.00	1.00	1.00	1.00
Power Plant Mechanic Supervisor	1.00	1.00	-	-
Power Plant Operation Supervisor	1.00	1.00	1.00	1.00
Power Plant Operator	5.00	5.00	4.00	4.00
Power Plant Shift Supervisor	5.00	5.00	5.00	5.00
Power Plant Superintendent	1.00	1.00	1.00	1.00
Power Plant Technician	1.00	1.00	1.00	1.00
Power Systems Analyst	1.00	1.00	1.00	1.00
Power Systems Associate	1.00	1.00	1.00	1.00
Principal Electrical Engineer	1.00	1.00	2.00	2.00
Principal Engineering Technician	1.00	1.00	1.00	1.00
Principal Water Quality Specialist	1.00	1.00	-	-
Program Supervisor	1.00	1.00	1.00	1.00
Public Benefits Charge Coordinator	2.00	2.00	-	-
Public Benefits Charge Marketing Manager	-	-	2.00	2.00
Revenue Protection Coordinator	1.00	1.00	1.00	1.00
Safety Services Specialist	1.00	1.00	1.00	1.00
Sr. Administrative Analyst	-	1.00	1.00	1.00
Sr. Civil Engineer	2.00	2.00	2.00	2.00
Sr. Customer Service Utility Representative	6.00	6.00	6.00	6.00
Sr. Electrical Service Planner	2.00	2.00	3.00	3.00
Sr. Electrical System Dispatcher	6.00	6.00	6.00	6.00
Sr. Electrical Test Technician	2.00	2.00	2.00	2.00
Sr. Engineering Technician	1.00	1.00	1.00	1.00
Sr. Environmental Program Specialist	1.00	1.00	1.00	1.00
Sr. IT Application Specialist	2.00	2.00	2.00	2.00
Sr. Mechanical Engineer	1.00	1.00	2.00	2.00
Sr. Office Services Specialist	5.00	5.00	5.00	5.00
Sr. Office Specialist	1.00	1.00	1.00	1.00
Sr. Power Plant Mechanic	2.00	2.00	2.00	2.00
Sr. Power Plant Technician	2.00	2.00	2.00	2.00
Sr. Utility Financial Analyst	3.00	3.00	3.00	3.00
Sr. Utility Locator	-	-	1.00	2.00
Sr. Water Facilities Operator	1.00	1.00	1.00	1.00
Sr. Water Quality Specialist	1.00	1.00	1.00	1.00
Sr. Water Quality Technician	1.00	1.00	1.00	1.00
Sr. Water System Mechanic	3.00	3.00	3.00	3.00

**CITY OF GLENDALE
GLENDALE WATER & POWER DEPARTMENT
PERSONNEL CLASSIFICATION DETAIL**

Classification	Actual 2015-16	Adopted 2016-17	Revised 2016-17	Adopted 2017-18				
Station Electrician	1.00	2.00	1.00	1.00				
Station Electrician/Operator	9.00	9.00	9.00	9.00				
Station Electrician/Operator Apprentice	2.00	2.00	2.00	2.00				
Station Electrician/Operator Supervisor I	4.00	4.00	4.00	4.00				
Station Electrician/Operator Supervisor II	1.00	1.00	1.00	1.00				
Station Electrician Supervisor I	1.00	-	1.00	1.00				
Storekeeper	3.00	3.00	3.00	3.00				
Stores Supervisor	1.00	1.00	1.00	1.00				
Systems Analyst	1.00	1.00	1.00	1.00				
Transformer Shop Technician	-	-	1.00	1.00				
Underground Distribution Construction Mechanic I	4.00	4.00	4.00	4.00				
Underground Distribution Construction Mechanic II	1.00	1.00	1.00	1.00				
Utility Building Repairer	1.00	1.00	1.00	1.00				
Utility Business System Supp Manager	1.00	1.00	1.00	1.00				
Utility Construction Inspector	2.00	2.00	2.00	2.00				
Utility Equipment Operator II	1.00	1.00	1.00	-				
Utility Finance Manager	1.00	1.00	1.00	1.00				
Utility Financial Analyst	-	-	-	-				
Utility Locator	2.00	2.00	1.00	1.00				
Utility Maintenance Worker	1.00	1.00	1.00	-				
Utility Risk Manager	1.00	1.00	-	-				
Utility Welder	1.00	1.00	1.00	1.00				
Water Engineering Manager	1.00	1.00	2.00	-				
Water Facilities Operator	2.00	2.00	-	2.00				
Water Facilities Supervisor	-	-	-	1.00				
Water Meter Repairer	2.00	2.00	2.00	2.00				
Water Quality Manager	1.00	1.00	1.00	1.00				
Water Quality Specialist	1.00	1.00	1.00	1.00				
Water Quality Supervisor	-	-	1.00	1.00				
Water Quality Technician	4.00	4.00	4.00	4.00				
Water Services Administrator	-	-	1.00	1.00				
Water Superintendent	2.00	2.00	2.00	2.00				
Water System Apprentice	2.00	2.00	2.00	2.00				
Water System Equipment Operator	3.00	3.00	3.00	4.00				
Water System Helper	4.00	4.00	4.00	4.00				
Water System Mechanic	8.00	8.00	8.00	8.00				
Water System Operations Supervisor	2.00	2.00	2.00	2.00				
Water System Supervisor I	1.00	1.00	1.00	-				
Water System Supervisor II	5.00	5.00	5.00	5.00				
Total Salaried Positions	326.00	327.50	328.50	328.50				
<u>Hourly Positions</u>								
Administrative Intern	0.94	(2)	1.20	(2)	1.20	(2)	-	*
Assistant IT Application Specialist	-		-		-		-	
City Resource Specialist	0.08	(2)	-		-		0.98	(3)
Customer Service Utility Representative	-		-		-		1.20	(2)
Electrical Helper	-		1.80	(3)	1.80	(3)	4.21	(7)
Electrical Line Mechanic	0.46	(1)	-		-		-	
Hourly City Worker	1.80	(3)	3.33	(6)	3.33	(6)	7.61	(13)
Line Clearance Forestry Supervisor I	1.06	(2)	0.46	(1)	0.46	(1)	0.46	(1)
Power Plant Control Operator	0.46	(1)	0.46	(1)	0.46	(1)	-	
Sr. Power Plant Technician	0.38	(1)	0.39	(1)	0.39	(1)	-	
Stores Clerk	-		-		-		1.20	(2)

**CITY OF GLENDALE
 GLENDALE WATER & POWER DEPARTMENT
 PERSONNEL CLASSIFICATION DETAIL**

Classification	Actual 2015-16	Adopted 2016-17	Revised 2016-17	Adopted 2017-18	
Water System Helper	-	-	-	0.60	(1)
Water System Supervisor II	0.46	-	-	-	
Total Hourly FTE Positions	<u>5.64</u>	<u>7.64</u>	<u>7.64</u>	<u>16.26</u>	
Glendale Water & Power Total	<u><u>331.64</u></u>	<u><u>335.14</u></u>	<u><u>336.14</u></u>	<u><u>344.76</u></u>	

Notes:

* Indicates number of employees corresponding to the stated Full-Time Equivalence (FTE).