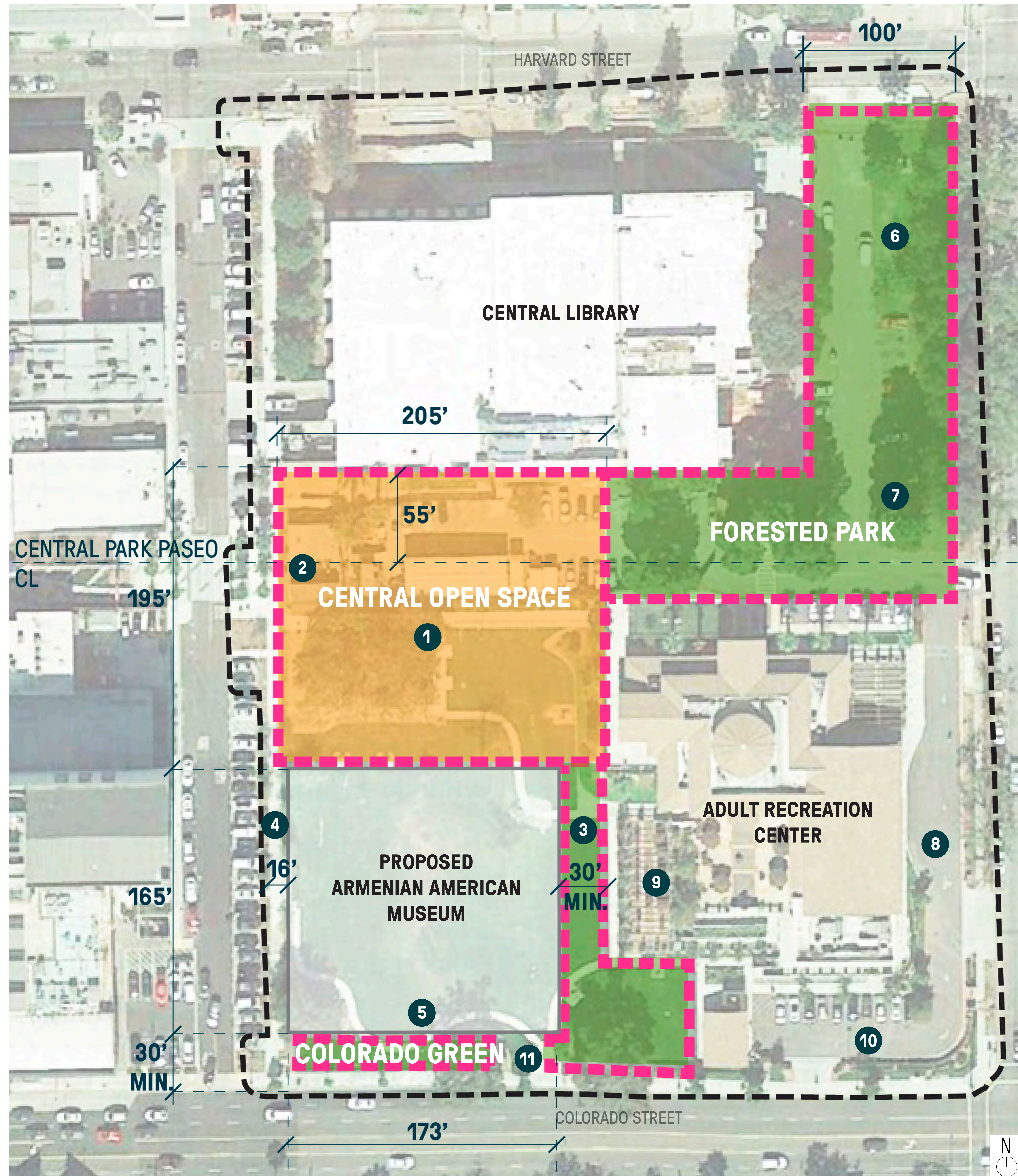


GET TO KNOW YOUR PROJECT:

Open Space Design Framework



GLENDALE CENTRAL PARK BLOCK
Community Workshops | January 2018

1. CREATE CENTRAL OPEN SPACE
Provide a ~200' x 200' square Central Open Space as the focal heart of the block that ties together the various paseos and links the surrounding public programs. Size for the variety of diverse events and programming.

2. EXPAND CENTRAL PASEO
Continue the existing Paseo originating at Brand Boulevard, through the entire block.

3. ESTABLISH SECONDARY PASEO
Maintain a 30' minimum offset from ARC terrace & sidewalk for a Paseo between buildings connecting Colorado Street to Central Park.

4. KEEP SYCAMORE PROMENADE
Maintain a row of Sycamores along sidewalk.

5. SITE BUILDING NEAR STREET
Maintain a 30' offset from curb to bring the building closer to Colorado Street, focusing open space in the central area of the block.

6. CREATE FOREST PARK & PLAYGROUND
Create large forested park, including children's playground, west of the library at most protected corner of the block.

7. PRESERVE EXISTING PINE TREES
Preserve large existing Pine trees located at east end of Paseo to frame Forest Park.

8. LOCATE PASEO DROP-OFF
Create new designed drop-off area to south of the Paseo for access to surrounding buildings and Central Park.

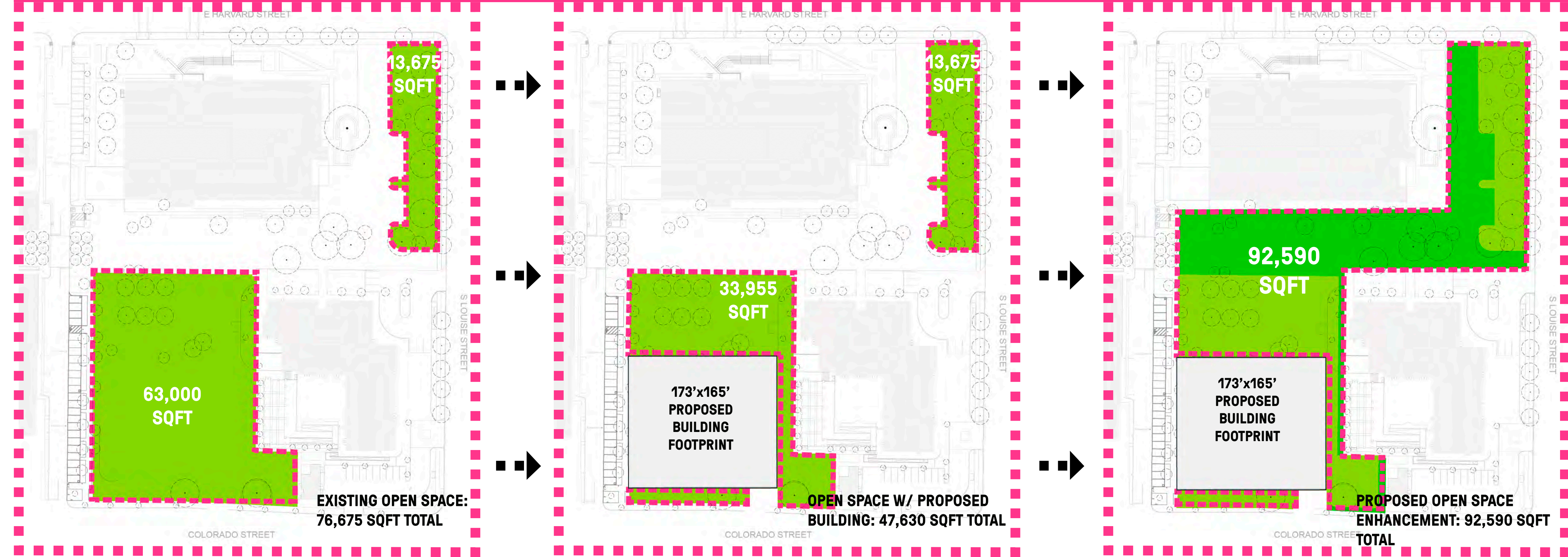
9. INTEGRATE TERRACE W/ PASEO DESIGN
Reprogram under-utilized space to unify with the new design program and expand the paseo.

10. PROGRAM 4TH CORNER
Remove existing shed and extend park to southeast corner of the block. Possible area for additional program.

11. ENTER GARAGE FROM COLORADO
Locate parking garage to take advantage of grading.

NOT TO SCALE

OPEN SPACE COMPARISON: EXISTING VS. PROPOSED



DESIGN CONCEPT & SITE PROGRAM

