

GUESTROOM CALCULATIONS	
LEVEL	ROOM
LEVEL 01	12
LEVEL 02	25
LEVEL 03	27
TOTAL	64

LANDSCAPE CALCULATIONS		
LEVEL	AREA	PERCENTAGE
LEVEL 01	3,159	14.6%
LEVEL 02	577	2.6%
TOTAL	3,736	17.2%

PROPOSED PROJECT	
PROPOSED USE :	NEW HOTEL
BUILDING HEIGHT TOTAL:	35 FEET
TOP OF ELEVATOR HOUSING:	38 FEET - 8 INCHES (PER GLENDALE MUN. CODE SEC. 30.12.030)
NO. OF STORIES :	3 STORY (ABOVE GRADE) 2 SUBTERRANEAN LEVELS
NO. OF GUESTROOMS :	64 GUESTROOMS
PARKING PROVIDED :	65 SPACES (INCLUDES 3 ACCESSIBLE PARKING)
TOTAL EXCAVATION:	333,400 CUBIC FEET (APPROXIMATE) 12,348 CUBIC YARDS (APPROXIMATE)
TOTAL BUILDING AREA :	37,858 SQUARE FEET
TOTAL PARKING AREA :	31,298 SQUARE FEET *
* NOTE - PARKING AREAS INCLUDES DRIVEWAY AND RAMPS	

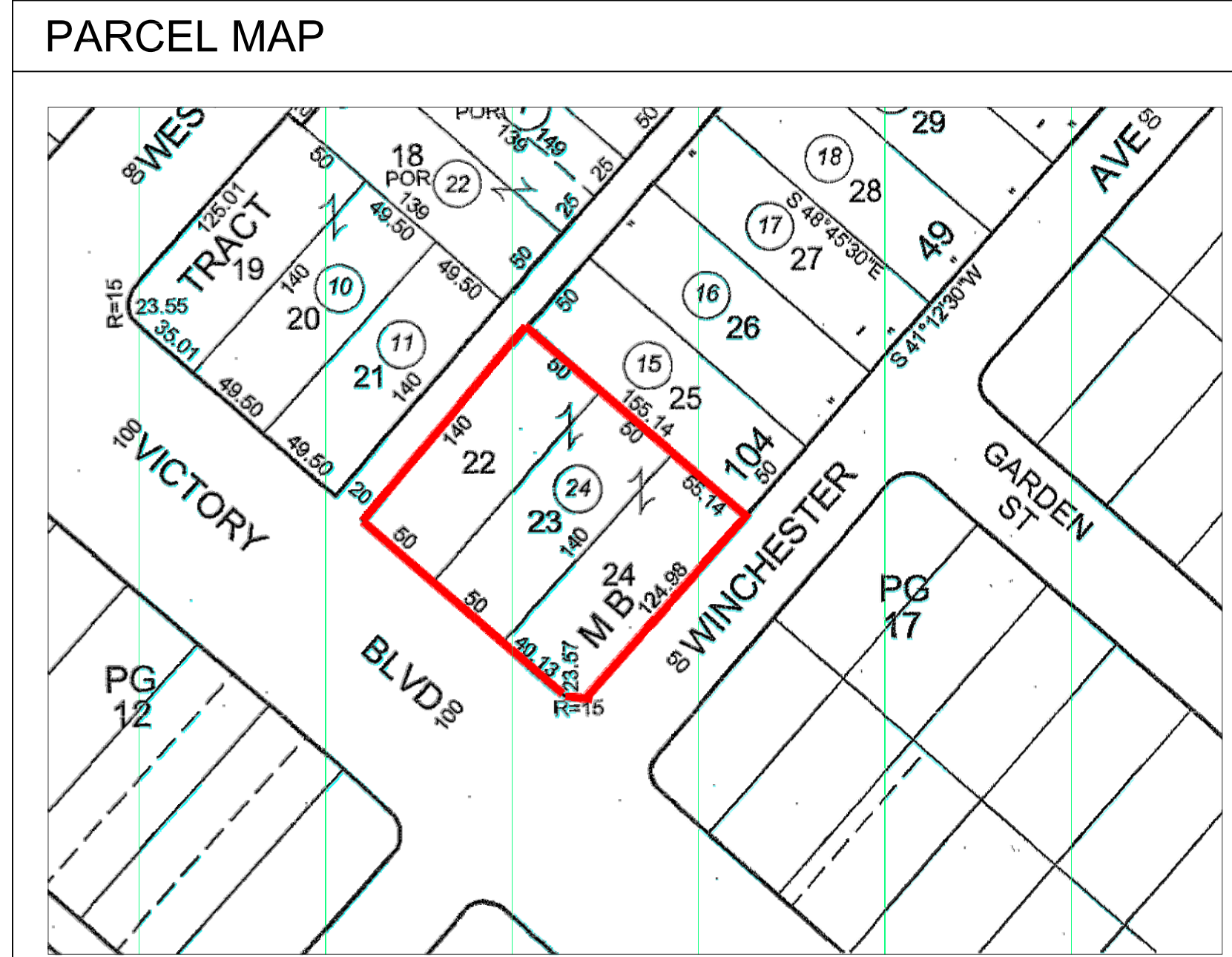
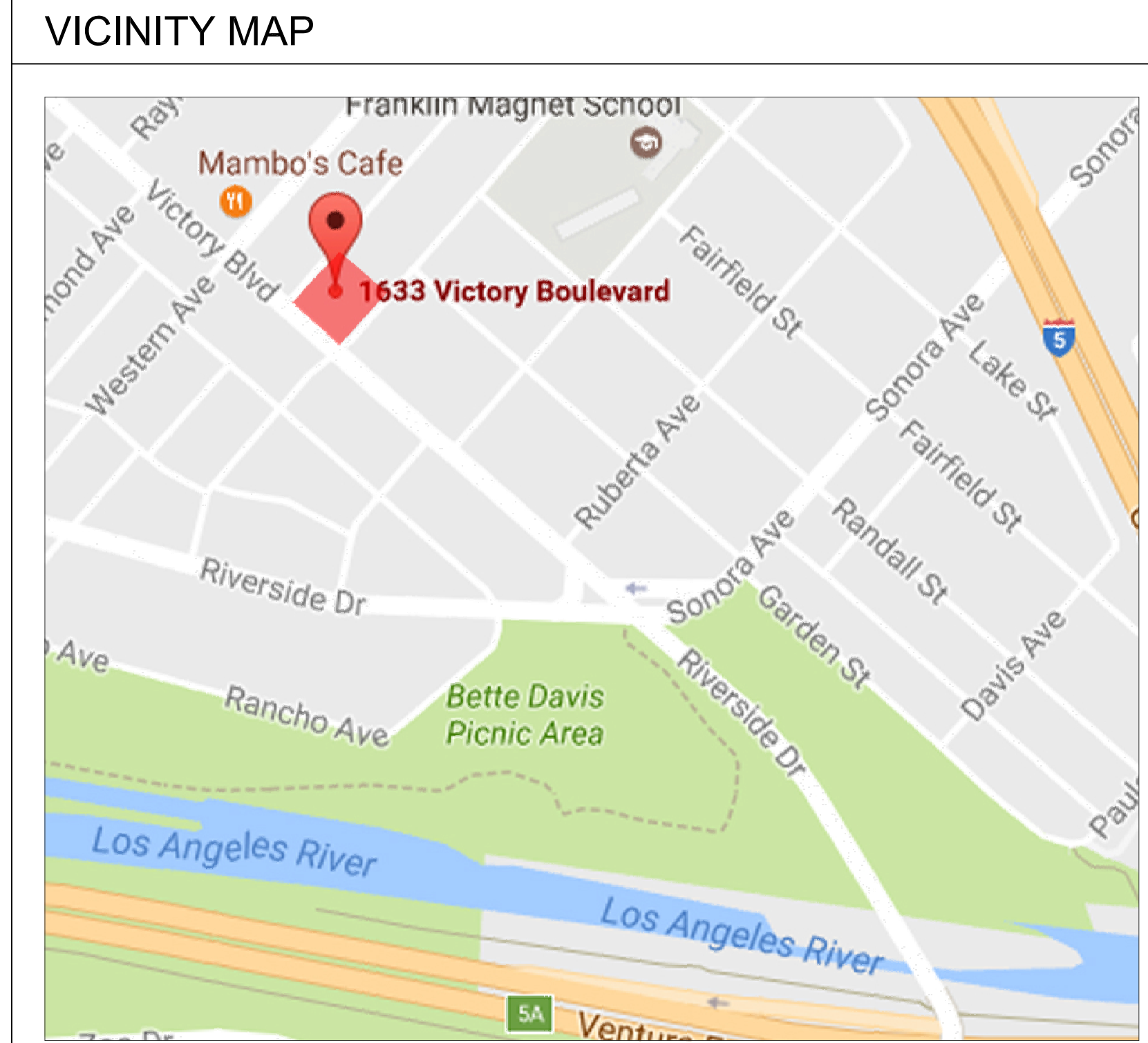
FLOOR AREA CALCULATIONS	
BASEMENT 02 :	2,357 SQUARE FEET
BASEMENT 01 :	870 SQUARE FEET
LEVEL 01 :	10,067 SQUARE FEET
LEVEL 02 :	12,338 SQUARE FEET
LEVEL 03 :	12,226 SQUARE FEET
TOTAL :	37,858 SQUARE FEET
OUTDOOR TERRACE :	4,281 SQUARE FEET

PARKING CALCULATIONS		
	STANDARD 9' x 18'	ACCESSIBLE 9' x 18'
LEVEL 01	0	3
BASEMENT LEVEL 01	40	0
BASEMENT LEVEL 02	22	0
TOTAL	62	3

SHEET INDEX	
SHEET	DRAWING TITLE
A0	PROJECT INFORMATION, VICINITY MAP
A1	PROPOSED SITE PLAN
A2	PROPOSED CONCEPTUAL BASEMENT L2 PLAN
A3	PROPOSED CONCEPTUAL BASEMENT L1 PLAN
A4	PROPOSED CONCEPTUAL LEVEL 01 PLAN
A5	PROPOSED CONCEPTUAL LEVEL 02 PLAN
A6	PROPOSED CONCEPTUAL LEVEL 03 PLAN
A7	PROPOSED CONCEPTUAL ROOF PLAN
A8	PROPOSED CONCEPTUAL ELEVATIONS
A9	PROPOSED CONCEPTUAL ELEVATIONS
A10	PROPOSED CONCEPTUAL SECTIONS
A11	PROPOSED CONCEPTUAL DOOR SCHEDULE
A12	PROPOSED CONCEPTUAL WINDOW SCHEDULE
A13	RENDERING ALONG VICTORY BLVD. (MAIN ENTRANCE)
A14	RENDERING ALONG VICTORY BLVD AND ALLEY
A15	RENDERING VIEW OF MID-BLOCK
A16	RENDERING VIEW OF MID-BLOCK WITHOUT PLANTS
SV-1	SURVEY
LT-1.0	TITLE SHEET
LI-1.1	IRRIGATION PLAN- LEVEL 1
LI-1.2	IRRIGATION PLAN- LEVEL 2
LI-2.0	IRRIGATION LEGEND, NOTES & DETAILS
LI-3.0	DRIP IRRIGATION DETAILS
LP-1.1	PLANTING PLAN LEVEL 1
LP-1.2	PLANTING PLAN LEVEL 2
LP-2.0	PLANTING LEGEND, NOTES & DETAILS
LS-1.0	SPECIFICATIONS
LS-2.0	SPECIFICATIONS
LS-3.0	SPECIFICATIONS

PROJECT INFORMATION	
PROJECT ADDRESS :	1633 VICTORY BOULEVARD, GLENDALE, CA 91201
ASSESSOR PARCEL NUMBER :	5626 - 013 - 024
GROSS PARCEL AREA :	0.50 ACRES (21,647 SQ) GROSS
LEGAL DESCRIPTION :	LOTS 22-24 IN TRACT NO. 8589, IN THE CITY OF GLENDALE, COUNTY OF LOS ANGELES, STATE OF CALIFORNIA, AS PER MAP RECORDED IN BOOK 104, PAGES 49-50, OF MAPS, IN THE OFFICE OF THE COUNTY RECORDER OF SAID COUNTY.
GENERAL PLAN LAND USE :	C3-1

PROJECT DIRECTORY	
OWNER / APPLICANT 1633 VICTORY BLVD, LLC OWNER REPRESENTATIVE JAYESH KUMAR 2010 North Highland Avenue, Los Angeles, CA 90068 T 323.216.1818	ARCHITECT NKLOSURES, INC. CONTACT: NIKHIL KAMAT 15560-C Rockfield Blvd., Suite 200 Irvine, CA 92618 T 323.309.7334
SITE SURVEY JC SURVEY P.O. BOX 86 ACTON, CA 93510 T 661.269.2711	LANDSCAPE ARCHITECT CHARLES TROWBRIDGE & ASSOCIATES 17901 ROMELLE AVENUE SANTA ANA, CA 92705 T 714.532.3663



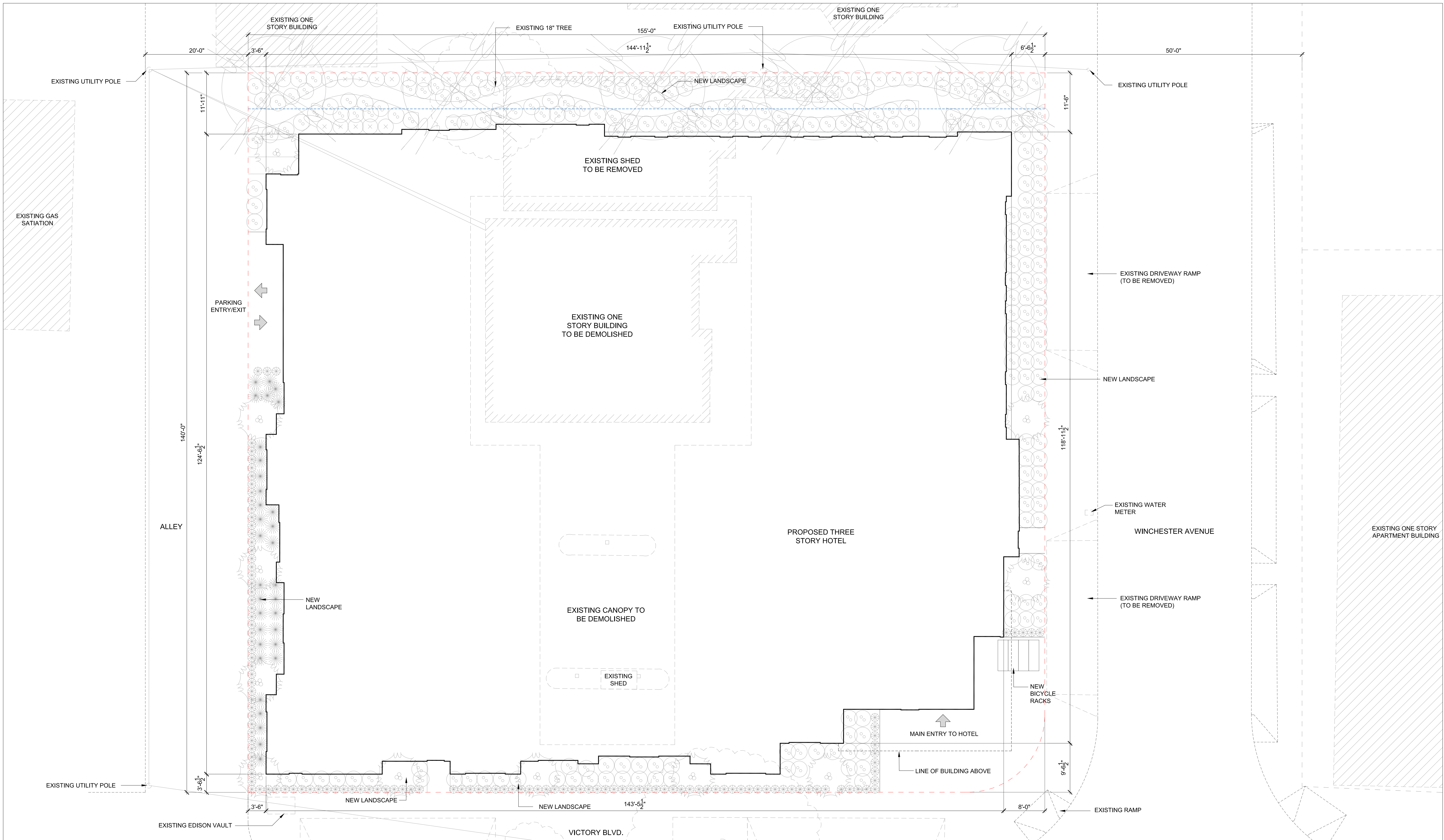
ARCHITECT:
nKLOSURES, Inc.
Tel: 323.309.7334
Email: info@nKLOSURES.com

1633 VICTORY, LLC
2010 N. HIGHLAND AVENUE,
LOS ANGELES, CA 90068

1633 VICTORY HOTEL
1633 VICTORY BLVD., GLENDALE
SEPTEMBER 14, 2017

**PROJECT INFORMATION,
VICINITY MAP**

EXHIBIT
A0



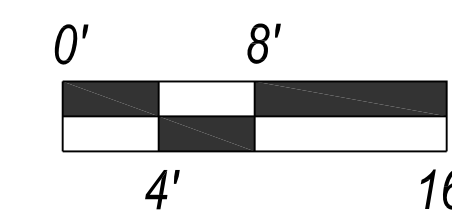
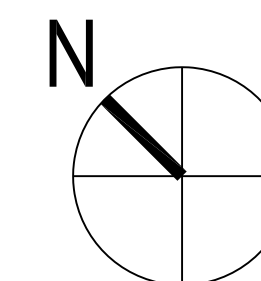
ARCHITECT:
nKLOSURES, Inc.
 Tel: 323.309.7334
 Email: info@nKLOSURES.com

1633 VICTORY, LLC

2010 N. HIGHLAND AVENUE,
 LOS ANGELES, CA 90068

1633 VICTORY HOTEL

1633 VICTORY BLVD., GLENDALE
 SEPTEMBER 14, 2017

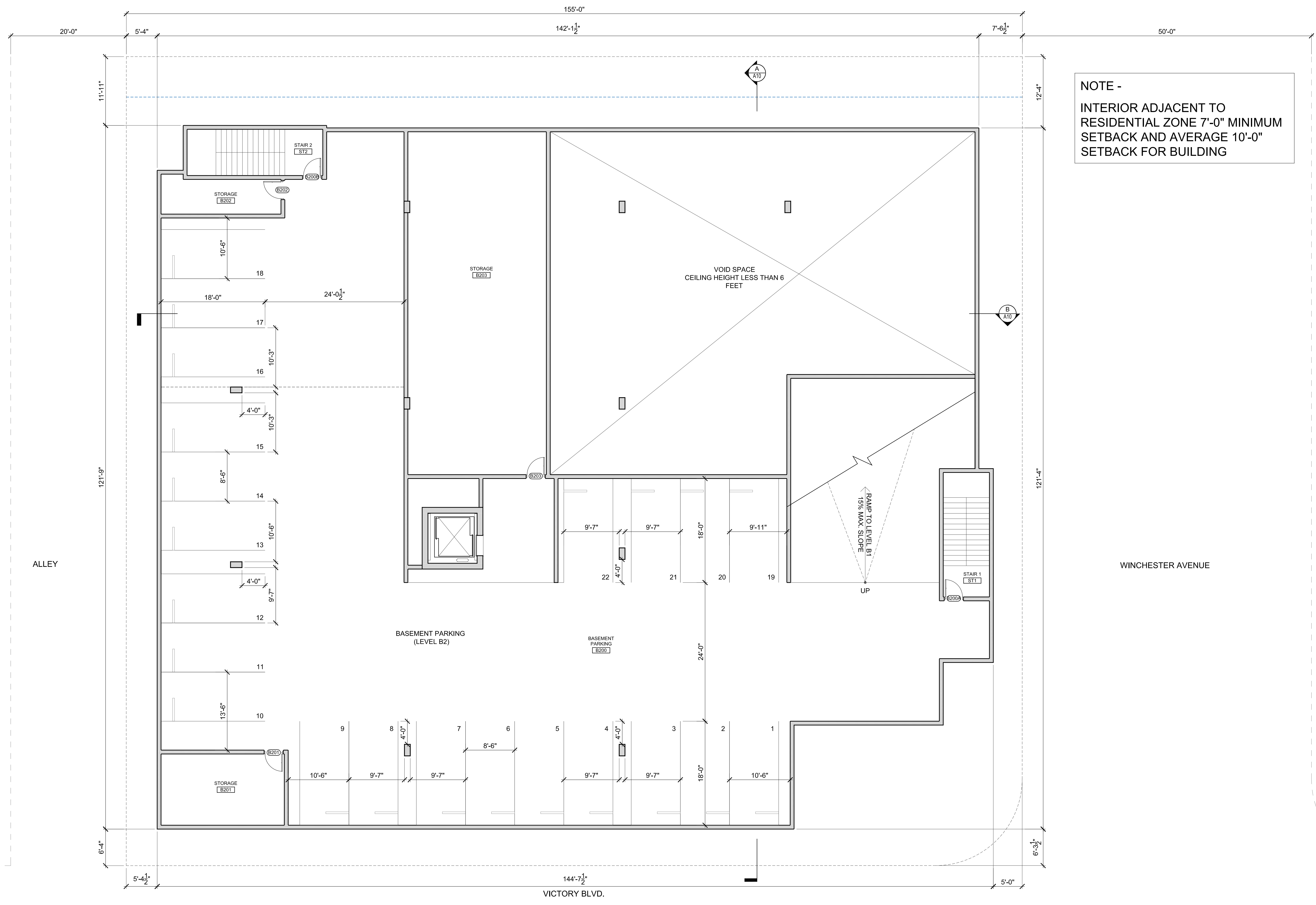


SCALE: 1/8" = 1'-0"

**PROPOSED
 SITE PLAN**

EXHIBIT

A1



NOTE -
 INTERIOR ADJACENT TO
 RESIDENTIAL ZONE 7'-0" MINIMUM
 SETBACK AND AVERAGE 10'-0"
 SETBACK FOR BUILDING

ARCHITECT:
nKLOSURES, Inc.
 Tel: 323.309.7334
 Email: info@nKLOSURES.com

1633 VICTORY, LLC
 2010 N. HIGHLAND AVENUE,
 LOS ANGELES, CA 90068

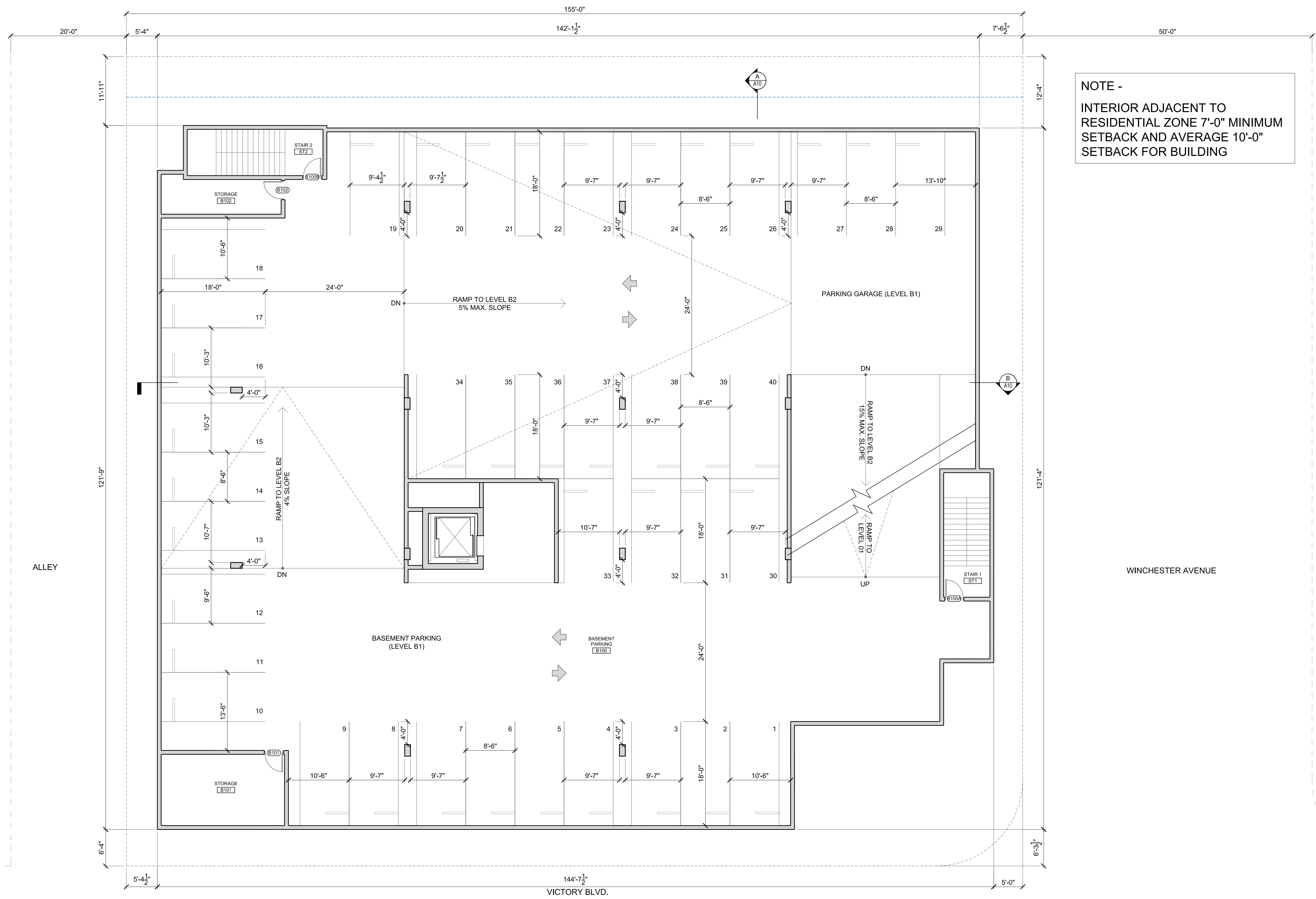
1633 VICTORY HOTEL
 1633 VICTORY BLVD., GLENDALE
 SEPTEMBER 14, 2017

N

 0' 8'
 4' 16'
 SCALE: 1/8" = 1'-0"

**PROPOSED BASEMENT
 LEVEL 02 PLAN**

**EXHIBIT
 A2**



NOTE -
 INTERIOR ADJACENT TO
 RESIDENTIAL ZONE 7'-0" MINIMUM
 SETBACK AND AVERAGE 10'-0"
 SETBACK FOR BUILDING

nkKLOSURES
 ARCHITECT:
nkKLOSURES, Inc.
 Tel: 323.309.7334
 Email: info@nkKLOSURES.com

1633 VICTORY, LLC
 2010 N. HIGHLAND AVENUE,
 LOS ANGELES, CA 90068

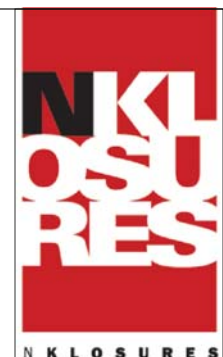
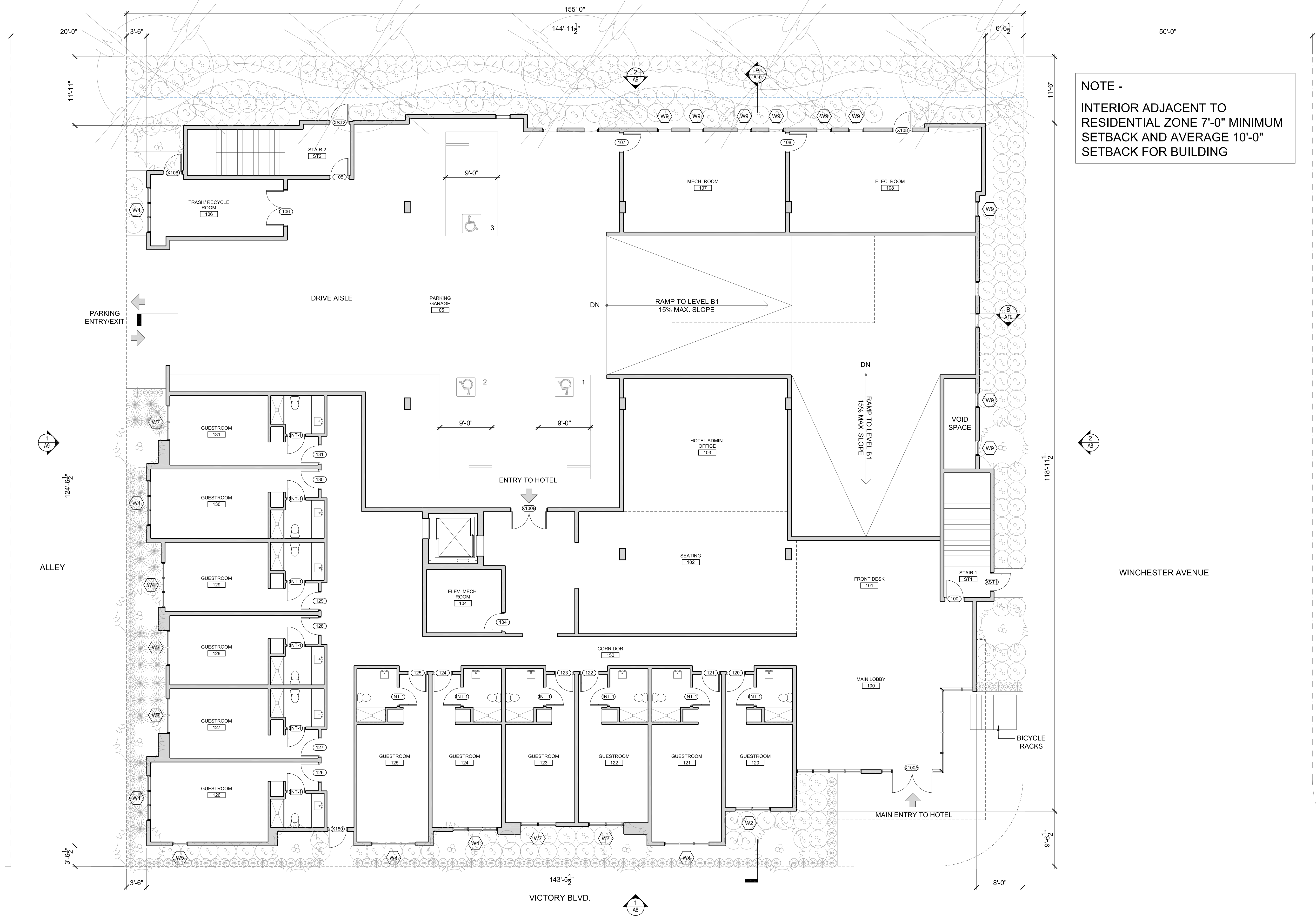
1633 VICTORY HOTEL
 1633 VICTORY BLVD., GLENDALE
 SEPTEMBER 14, 2017

N

 SCALE: 1/8" = 1'-0"

**PROPOSED BASEMENT
 LEVEL 01 PLAN**

**EXHIBIT
 A3**



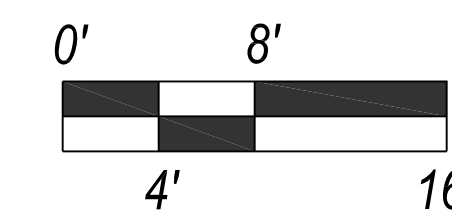
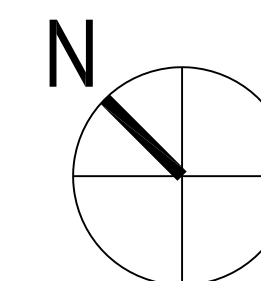
ARCHITECT:
nKLOSURES, Inc.
 Tel: 323.309.7334
 Email: info@nKLOSURES.com

1633 VICTORY, LLC

2010 N. HIGHLAND AVENUE,
 LOS ANGELES, CA 90068

1633 VICTORY HOTEL

1633 VICTORY BLVD., GLENDALE
 SEPTEMBER 14, 2017

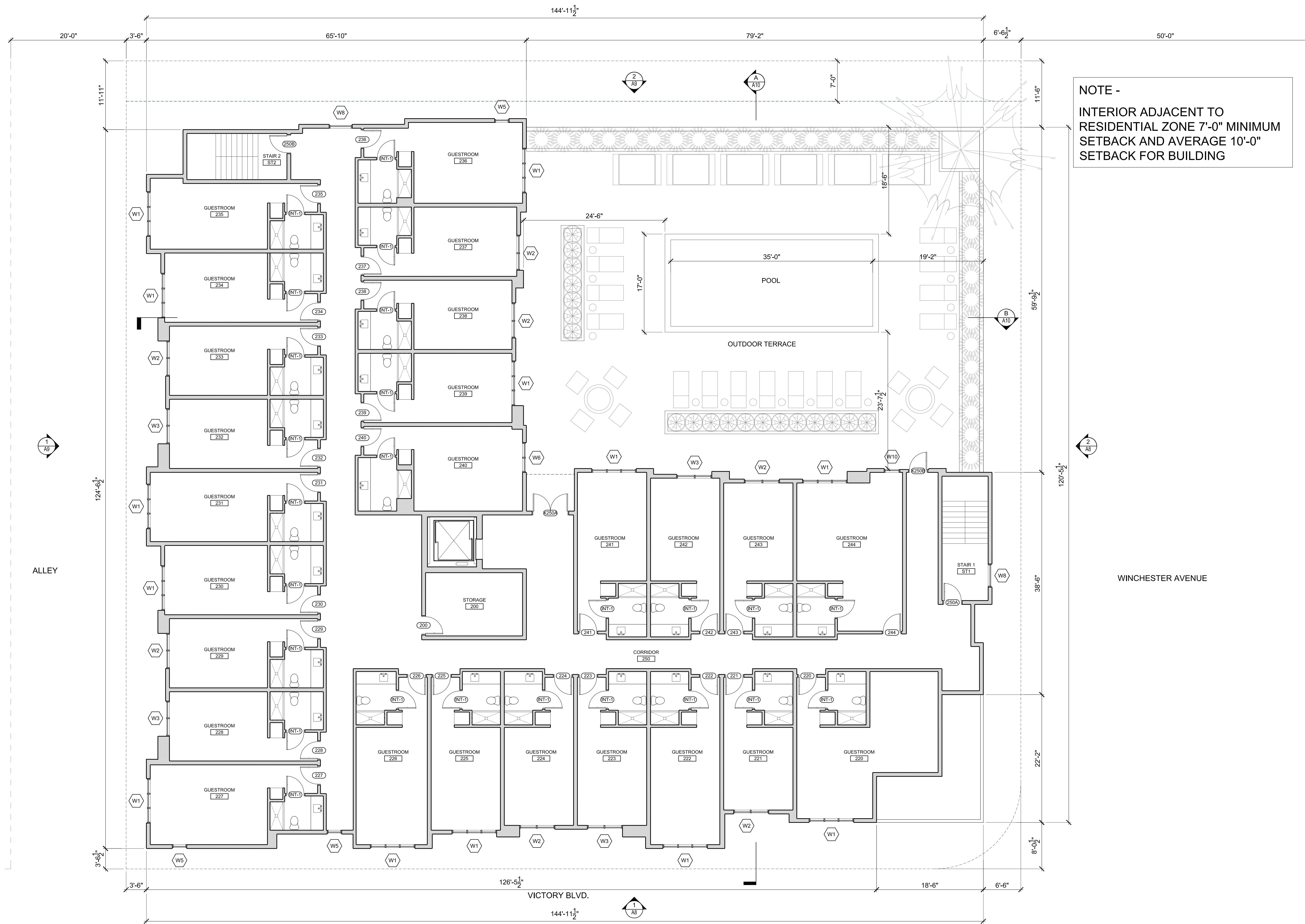


SCALE: 1/8" = 1'-0"

PROPOSED LEVEL 01 PLAN

EXHIBIT

A4



NOTE -
 INTERIOR ADJACENT TO
 RESIDENTIAL ZONE 7'-0" MINIMUM
 SETBACK AND AVERAGE 10'-0"
 SETBACK FOR BUILDING

nKLOSURES
 ARCHITECT:
nKLOSURES, Inc.
 Tel: 323.309.7334
 Email: info@nKLOSURES.com

1633 VICTORY, LLC
 2010 N. HIGHLAND AVENUE,
 LOS ANGELES, CA 90068

1633 VICTORY HOTEL
 1633 VICTORY BLVD., GLENDALE
 SEPTEMBER 14, 2017

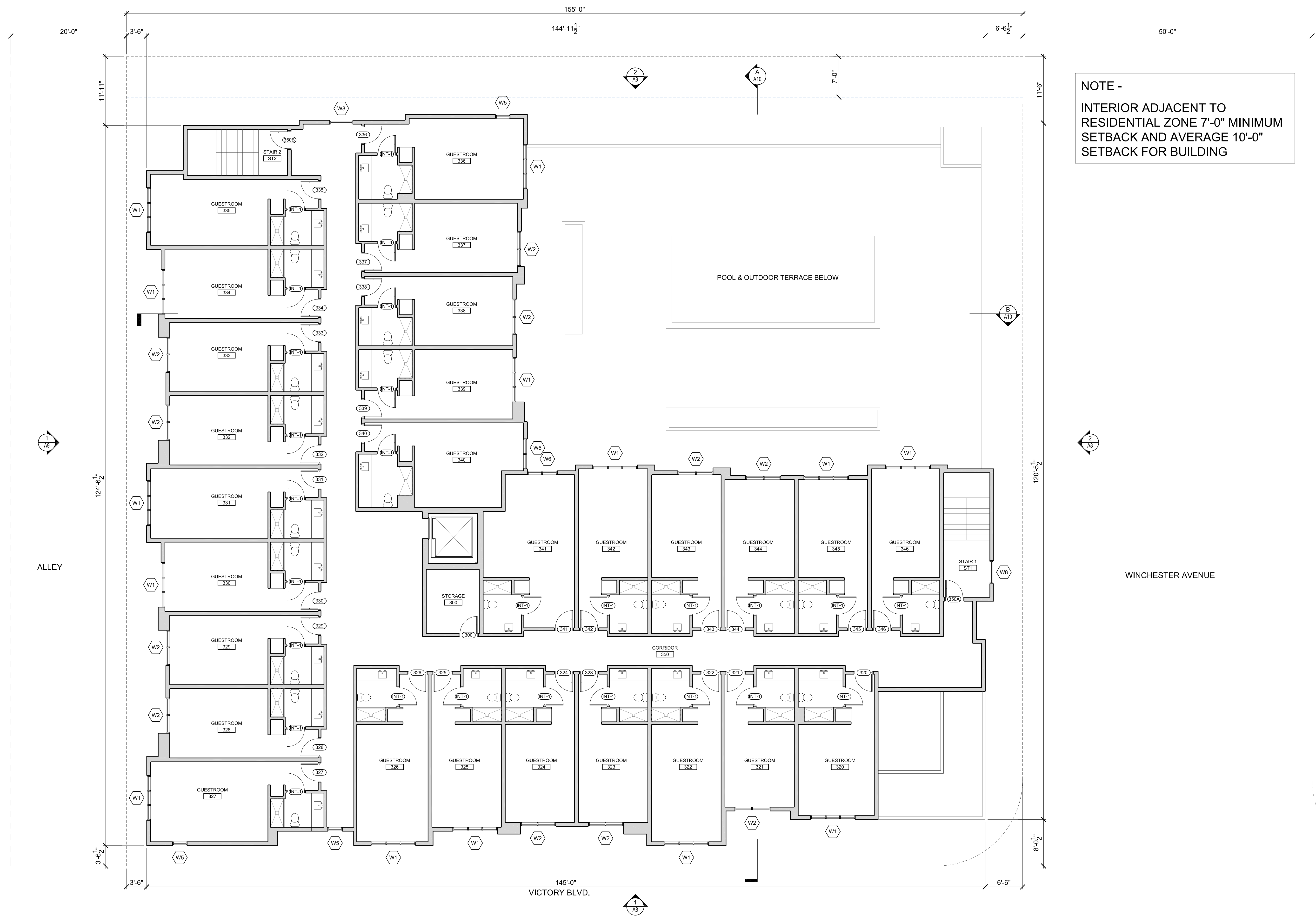
N

 0' 8' 16'

 SCALE: 1/8" = 1'-0"

PROPOSED LEVEL 02 PLAN

EXHIBIT
A5



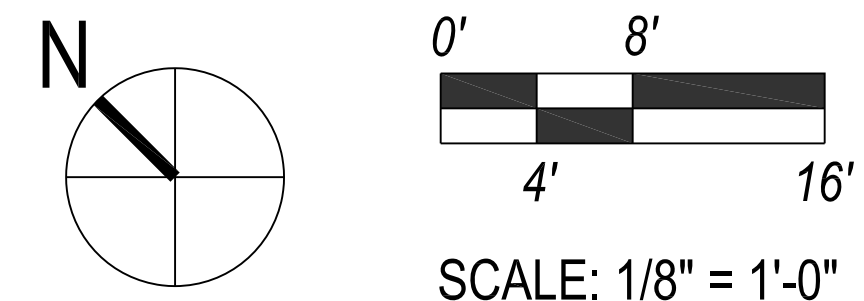
NOTE -
 INTERIOR ADJACENT TO
 RESIDENTIAL ZONE 7'-0" MINIMUM
 SETBACK AND AVERAGE 10'-0"
 SETBACK FOR BUILDING



ARCHITECT:
nKLOSURES, Inc.
 Tel: 323.309.7334
 Email: info@nKLOSURES.com

1633 VICTORY, LLC
 2010 N. HIGHLAND AVENUE,
 LOS ANGELES, CA 90068

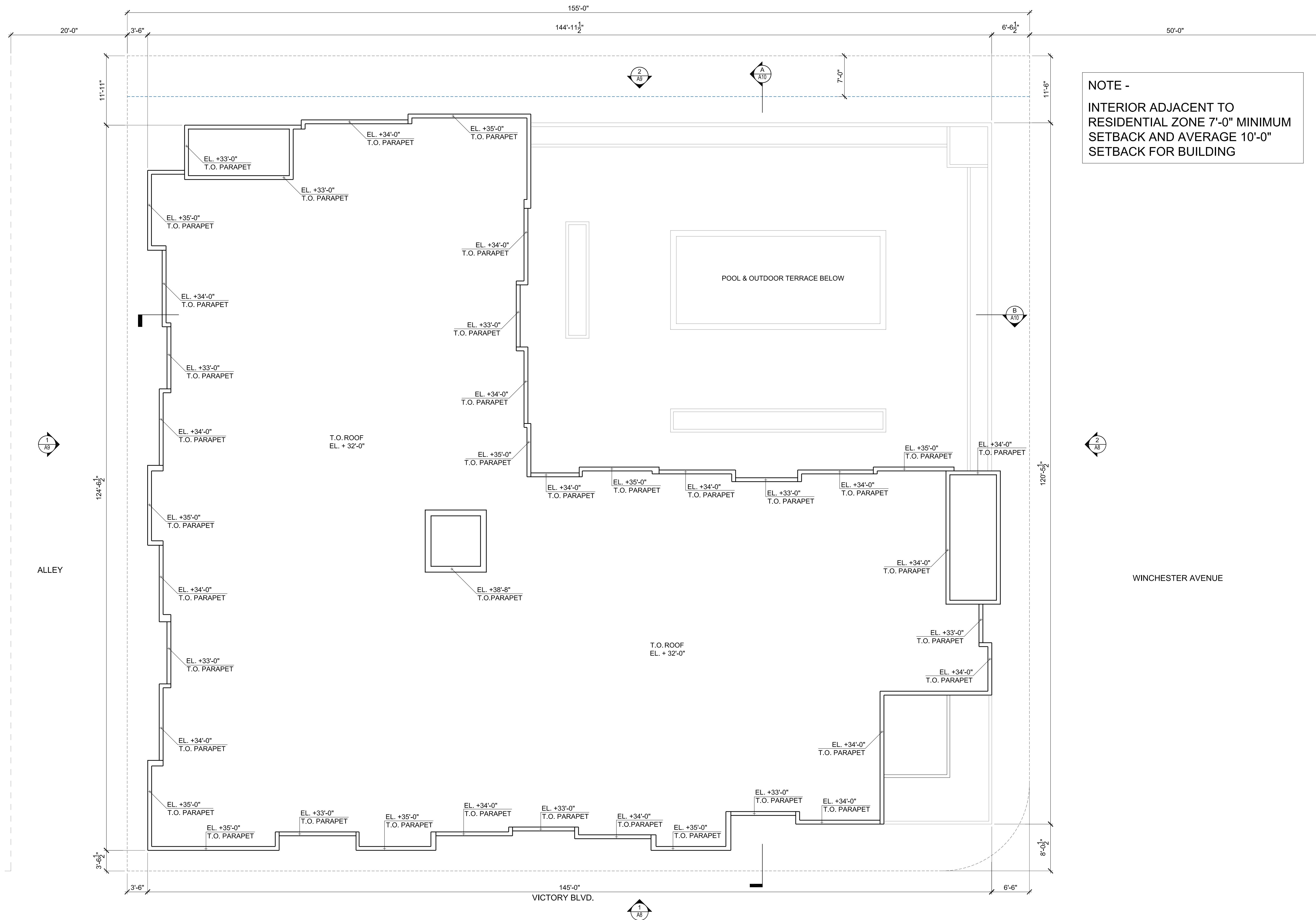
1633 VICTORY HOTEL
 1633 VICTORY BLVD., GLENDALE
 SEPTEMBER 14, 2017



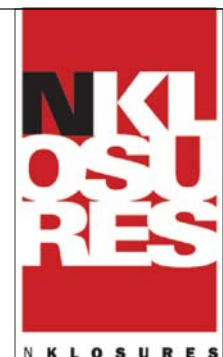
0' 8'
 4' 16'
 SCALE: 1/8" = 1'-0"

PROPOSED LEVEL 03 PLAN

EXHIBIT
A6



NOTE -
 INTERIOR ADJACENT TO
 RESIDENTIAL ZONE 7'-0" MINIMUM
 SETBACK AND AVERAGE 10'-0"
 SETBACK FOR BUILDING



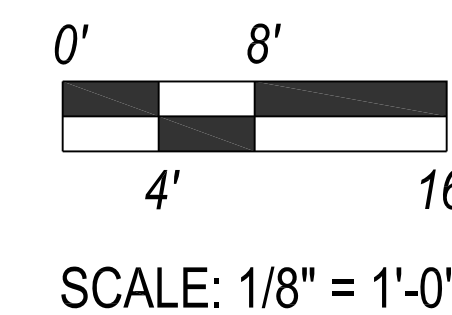
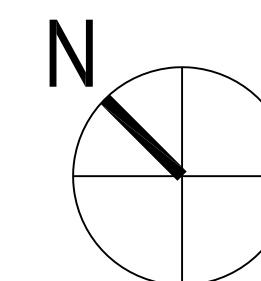
ARCHITECT:
nKLOSURES, Inc.
 Tel: 323.309.7334
 Email: info@nKLOSURES.com

1633 VICTORY, LLC

2010 N. HIGHLAND AVENUE,
 LOS ANGELES, CA 90068

1633 VICTORY HOTEL

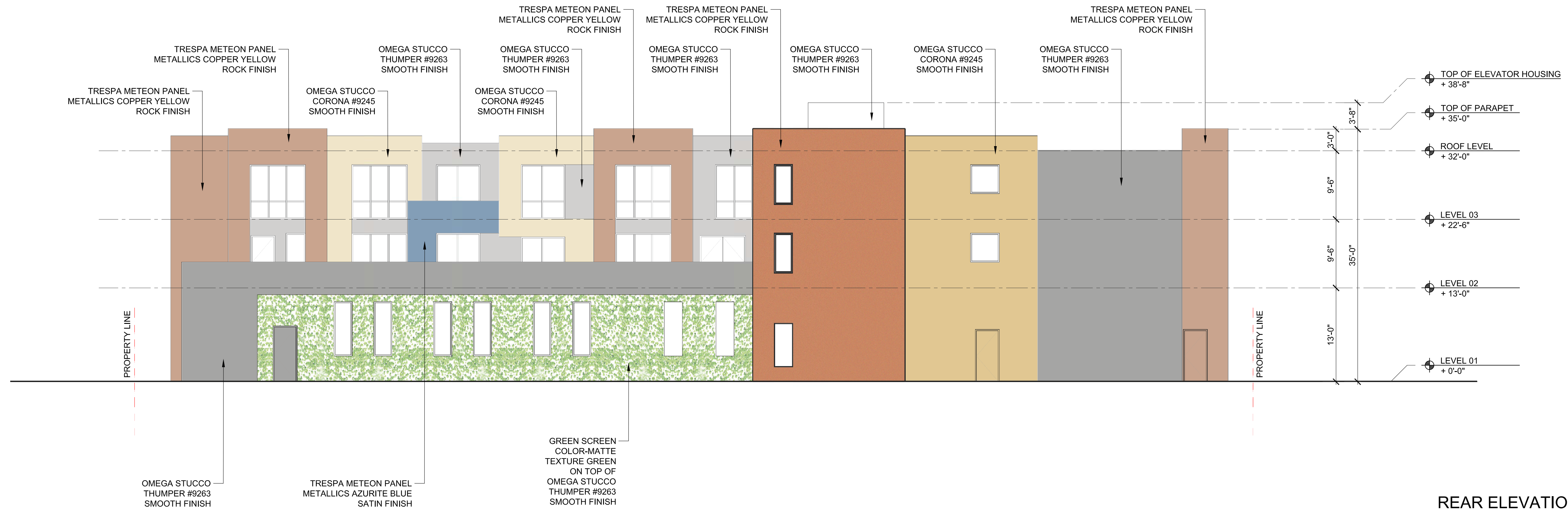
1633 VICTORY BLVD., GLENDALE
 SEPTEMBER 14, 2017



PROPOSED ROOF PLAN

EXHIBIT

A7



REAR ELEVATION (MID-BLOCK) 2
1/8" = 1'-0"



SIDE ELEVATION (ALLEY) 1
1/8" = 1'-0"



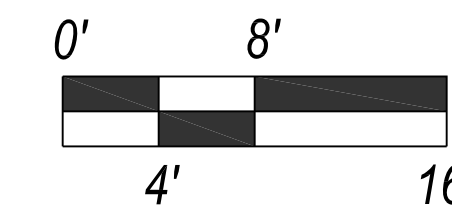
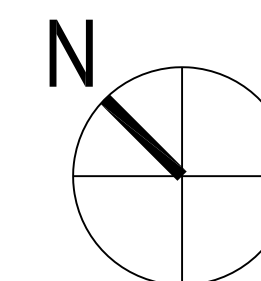
ARCHITECT:
nKLOSURES, Inc.
Tel: 323.309.7334
Email: info@nKLOSURES.com

1633 VICTORY, LLC

2010 N. HIGHLAND AVENUE,
LOS ANGELES, CA 90068

1633 VICTORY HOTEL

1633 VICTORY BLVD., GLENDALE
SEPTEMBER 14, 2017

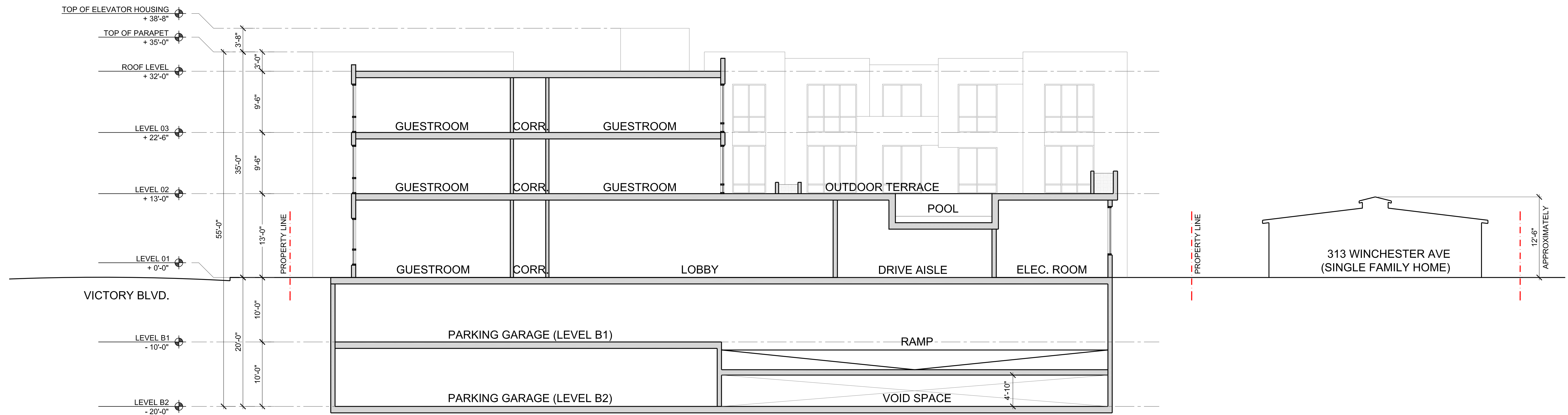


SCALE: 1/8" = 1'-0"

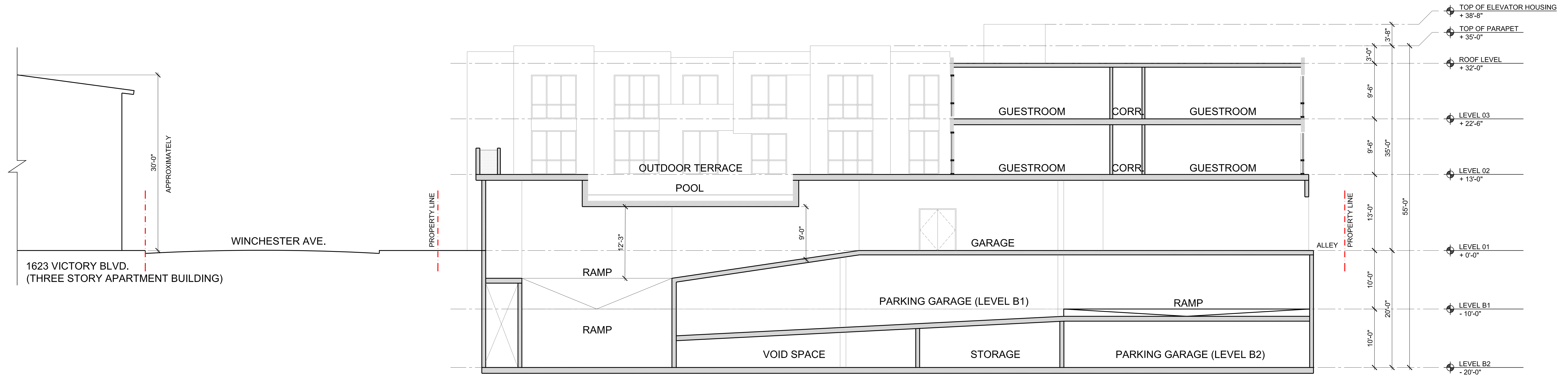
PROPOSED EXTERIOR
ELEVATIONS

EXHIBIT

A9



SECTION A 2
1/8" = 1'-0"



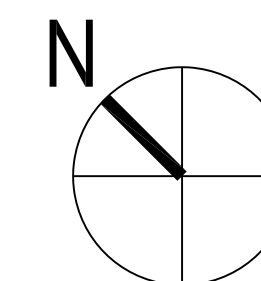
SECTION B 1
1/8" = 1'-0"



ARCHITECT:
nKLOSURES, Inc.
Tel: 323.309.7334
Email: info@nKLOSURES.com

1633 VICTORY, LLC
2010 N. HIGHLAND AVENUE,
LOS ANGELES, CA 90068

1633 VICTORY HOTEL
1633 VICTORY BLVD., GLENDALE
SEPTEMBER 14, 2017



0' 8' 16'
4' 16'
SCALE: 1/8" = 1'-0"

PROPOSED SECTIONS

EXHIBIT
A10

DOOR SCHEDULE

REV	DOOR NO.	ROOM NAME	WIDTH	HEIGHT	THK.	TYPE	FIRE RATING	DOOR		FRAME		DETAIL			HARDWARE	REMARKS
								MATERIAL	FINISH	MATERIAL	FINISH	HEAD	JAMB	THRESHOLD		
LEVEL 02 (CONT.) (REFER TO DRAWING A5)																
	234	GUESTROOM	3'-0"	7'-0"	1-3/4"		20 MIN.	GL/MTL	GL	MTL	FF				H1, H3, H4, H5	
	235	GUESTROOM	3'-0"	7'-0"	1-3/4"		20 MIN.	SC/WD	PTD.	MTL	PTD.				H1, H3, H4, H5	
	236	GUESTROOM	3'-0"	7'-0"	1-3/4"		20 MIN.	SC/WD	PTD.	MTL	PTD.				H1, H3, H4, H5	
	237	GUESTROOM	3'-0"	7'-0"	1-3/4"		20 MIN.	SC/WD	PTD.	MTL	PTD.				H1, H3, H4, H5	
	238	GUESTROOM	4'-0"	7'-0"	1-3/4"		20 MIN.	SC/WD	PTD.	MTL	PTD.				H1, H3, H4, H5	
	239	GUESTROOM	3'-0"	7'-0"	1-3/4"		20 MIN.	SC/WD	PTD.	MTL	PTD.				H1, H3, H4, H5	
	240	GUESTROOM	3'-0"	7'-0"	1-3/4"		90 MIN.	SC/WD	PTD.	MTL	PTD.				H1, H3, H4, H5	
	241	GUESTROOM	4'-0"	7'-0"	1-3/4"		20 MIN.	SC/WD	PTD.	MTL	PTD.				H1, H3, H4, H5	
	242	GUESTROOM	3'-0"	7'-0"	1-3/4"		20 MIN.	SC/WD	PTD.	MTL	PTD.				H1, H3, H4, H5	
	243	GUESTROOM	3'-0"	7'-0"	1-3/4"		20 MIN.	SC/WD	PTD.	MTL	PTD.				H1, H3, H4, H5	
	244	GUESTROOM	3'-0"	7'-0"	1-3/4"		20 MIN.	SC/WD	PTD.	MTL	PTD.				H1, H3, H4, H5	
	INT-1	GUESTROOM BATH RM	3'-0"	7'-0"	1-3/4"		—	SC/WD	PTD.	MTL	PTD.				H1, H3	
	250A	STAIR 1	3'-0"	7'-0"	1-3/4"		90 MIN.	SC/WD	PTD.	MTL	PTD.				H1, H3, H4, H5, H6	
	250B	STAIR 2	3'-0"	7'-0"	1-3/4"		90 MIN.	SC/WD	PTD.	MTL	PTD.				H1, H3, H4, H5, H6	
	X250A	OUTDOOR TERRACE	6'-0"		1-3/4"		20 MIN.	SC/WD	PTD.	MTL	PTD.				H1, H3, H4, H5	
	X250B	OUTDOOR TERRACE	3'-0"		1-3/4"		20 MIN.	SC/WD	PTD.	MTL	PTD.				H1, H3, H4, H5	
LEVEL 03 (REFER TO DRAWING A6)																
	300	STORAGE	3'-0"	7'-0"	1-3/4"		20 MIN.	GL/MTL	GL	MTL	FF				H1, H3	
	320	GUESTROOM	3'-0"	7'-0"	1-3/4"		20 MIN.	SC/WD	PTD.	MTL	PTD.				H1, H3, H4, H5	
	321	GUESTROOM	3'-0"	7'-0"	1-3/4"		20 MIN.	SC/WD	PTD.	MTL	PTD.				H1, H3, H4, H5	
	322	GUESTROOM	3'-0"	7'-0"	1-3/4"		20 MIN.	SC/WD	PTD.	MTL	PTD.				H1, H3, H4, H5	
	323	GUESTROOM	3'-0"	7'-0"	1-3/4"		20 MIN.	SC/WD	PTD.	MTL	PTD.				H1, H3, H4, H5	
	324	GUESTROOM	3'-0"	7'-0"	1-3/4"		20 MIN.	SC/WD	PTD.	MTL	PTD.				H1, H3, H4, H5	
	325	GUESTROOM	3'-0"	7'-0"	1-3/4"		20 MIN.	SC/WD	PTD.	MTL	PTD.				H1, H3, H4, H5	
	326	GUESTROOM	3'-0"	7'-0"	1-3/4"		20 MIN.	SC/WD	PTD.	MTL	PTD.				H1, H3, H4, H5	
	327	GUESTROOM	3'-0"	7'-0"	1-3/4"		20 MIN.	SC/WD	PTD.	MTL	PTD.				H1, H3, H4, H5	
	328	GUESTROOM	3'-0"	7'-0"	1-3/4"		20 MIN.	SC/WD	PTD.	MTL	PTD.				H1, H3, H4, H5	
	329	GUESTROOM	3'-0"	7'-0"	1-3/4"		20 MIN.	SC/WD	PTD.	MTL	PTD.				H1, H3, H4, H5	
	330	GUESTROOM	3'-0"	7'-0"	1-3/4"		20 MIN.	SC/WD	PTD.	MTL	PTD.				H1, H3, H4, H5	
	331	GUESTROOM	3'-0"	7'-0"	1-3/4"		20 MIN.	SC/WD	PTD.	MTL	PTD.				H1, H3, H4, H5	
	332	GUESTROOM	3'-0"	7'-0"	1-3/4"		20 MIN.	SC/WD	PTD.	MTL	PTD.				H1, H3, H4, H5	
	333	GUESTROOM	3'-0"	7'-0"	1-3/4"		20 MIN.	SC/WD	PTD.	MTL	PTD.				H1, H3, H4, H5	
	334	GUESTROOM	3'-0"	7'-0"	1-3/4"		20 MIN.	SC/WD	PTD.	MTL	PTD.				H1, H3, H4, H5	
	335	GUESTROOM	3'-0"	7'-0"	1-3/4"		20 MIN.	SC/WD	PTD.	MTL	PTD.				H1, H3, H4, H5	
	336	GUESTROOM	3'-0"	7'-0"	1-3/4"		20 MIN.	SC/WD	PTD.	MTL	PTD.				H1, H3, H4, H5	
	337	GUESTROOM	3'-0"	7'-0"	1-3/4"		20 MIN.	SC/WD	PTD.	MTL	PTD.				H1, H3, H4, H5	
	338	GUESTROOM	3'-0"	7'-0"	1-3/4"		20 MIN.	SC/WD	PTD.	MTL	PTD.				H1, H3, H4, H5	
	339	GUESTROOM	3'-0"	7'-0"	1-3/4"		20 MIN.	SC/WD	PTD.	MTL	PTD.				H1, H3, H4, H5	
	340	GUESTROOM	3'-0"	7'-0"	1-3/4"		20 MIN.	SC/WD	PTD.	MTL	PTD.				H1, H3, H4, H5	
	341	GUESTROOM	3'-0"	7'-0"	1-3/4"		20 MIN.	SC/WD	PTD.	MTL	PTD.				H1, H3, H4, H5	
	342	GUESTROOM	3'-0"	7'-0"	1-3/4"		20 MIN.	SC/WD	PTD.	MTL	PTD.				H1, H3, H4, H5	
	343	GUESTROOM	3'-0"	7'-0"	1-3/4"		20 MIN.	SC/WD	PTD.	MTL	PTD.				H1, H3, H4, H5	
	344	GUESTROOM	3'-0"	7'-0"	1-3/4"		20 MIN.	SC/WD	PTD.	MTL	PTD.				H1, H3, H4, H5	
	345	GUESTROOM	3'-0"	7'-0"	1-3/4"		20 MIN.	SC/WD	PTD.	MTL	PTD.				H1, H3, H4, H5	
	346	GUESTROOM	3'-0"	7'-0"	1-3/4"		20 MIN.	SC/WD	PTD.	MTL	PTD.				H1, H3, H4, H5	
	INT-1	GUESTROOM BATH RM	3'-0"	7'-0"	1-3/4"		—	SC/WD	PTD.	MTL	PTD.				H1, H3	
	350A	STAIR 1	3'-0"	7'-0"	1-3/4"		90 MIN.	SC/WD	PTD.	MTL	PTD.				H1, H3, H4, H5, H6	
	350B	STAIR 2	3'-0"	7'-0"	1-3/4"		90 MIN.	SC/WD	PTD.	MTL	PTD.				H1, H3, H4, H5, H6	

DOOR SCHEDULE

REV	DOOR NO.	ROOM NAME	WIDTH	HEIGHT	THK.	TYPE	FIRE RATING	DOOR		FRAME		DETAIL			HARDWARE	REMARKS
								MATERIAL	FINISH	MATERIAL	FINISH	HEAD	JAMB	THRESHOLD		
BASEMENT LEVEL 02 (REFER TO DRAWING A2)																
	B200A	STAIR 1	3'-0"	7'-0"	1-3/4"		90 MIN.	SC/WD	PTD.	MTL	PTD.				H1, H3, H4, H5, H6	
	B200B	STAIR 2	3'-0"	7'-0"	1-3/4"		90 MIN.	SC/WD	PTD.	MTL	PTD.				H1, H3, H4, H5, H6	
	B201	STORAGE	3'-0"	7'-0"	1-3/4"		20 MIN.	SC/WD	PTD.	MTL	PTD.				H1, H3, H4, H5	
	B202	STORAGE	3'-0"	7'-0"	1-3/4"		20 MIN.	SC/WD	PTD.	MTL	PTD.				H1, H3, H4, H5	
	B203	STORAGE	3'-0"	7'-0"	1-3/4"		20 MIN.	SC/WD	PTD.	MTL	PTD.				H1, H3, H4, H5	
BASEMENT LEVEL 01 (REFER TO DRAWING A3)																
	B100A	STAIR 1	3'-0"	7'-0"	1-3/4"		90 MIN.	SC/WD	PTD.	MTL	PTD.				H1, H3, H4, H5, H6	
	B100B	STAIR 2	3'-0"	7'-0"	1-3/4"		90 MIN.	SC/WD	PTD.	MTL	PTD.				H1, H3, H4, H5, H6	
	B101	STORAGE	3'-0"	7'-0"	1-3/4"		20 MIN.	SC/WD	PTD.	MTL	PTD.				H1, H3, H4, H5	
	B102	STORAGE	3'-0"	7'-0"	1-3/4"		20 MIN.	SC/WD	PTD.	MTL	PTD.				H1, H3, H4, H5	
LEVEL 01 (REFER TO DRAWING A4)																
	X100A	MAIN LOBBY	6'-10"		1-3/4"		20 MIN.	GL/MTL	GL	MTL	FF					
	X100B	LOBBY SEATING	6'-0"	7'-0"	1-3/4"		20 MIN.	SC/WD	PTD.	MTL	PTD.					
	100	STAIR 1	3'-0"	7'-0"	1-3/4"		90 MIN.	SC/WD	PTD.	MTL	PTD.				H1, H3, H4, H5, H6	
	XST1	STAIR 1	3'-0"	7'-0"	1-3/4"		90 MIN.	SC/WD	PTD.	MTL	PTD.				H1, H3, H4, H5, H6	
	104	ELEV. MACH. RM	3'-0"	7'-0"	1-3/4"		20 MIN.	SC/WD	PTD.	MTL	PTD.				H1, H3, H4, H5, H6	
	105	STAIR 2	3'-0"	7'-0"	1-3/4"		90 MIN.	SC/WD	PTD.	MTL	PTD.				H1, H3, H4, H5, H6	
	106	TRASH/ RECYCLE RM	6'-0"	7'-0"	1-3/4"		20 MIN.	SC/WD	PTD.	MTL	PTD.				H1, H3	
	X106	TRASH/ RECYCLE RM	3'-0"	7'-0"	1-3/4"		20 MIN.	SC/WD	PTD.	MTL	PTD.				H1, H3	
	107	MECH. RM	3'-0"	7'-0"	1-3/4"		20 MIN.	SC/WD	PTD.	MTL	PTD.				H1, H3, H4	
	108	ELEC. RM	3'-0"	7'-0"	1-3/4"		20 MIN.	SC/WD	PTD.	MTL	PTD.				H1, H3, H4, H5, H6	
	X108	ELEC. RM	3'-0"	7'-0"	1-3/4"		20 MIN.	SC/WD	PTD.	MTL	PTD.				H1, H3, H4, H5, H6	
	XST2	STAIR 2	3'-0"	7'-0"	1-3/4"		90 MIN.	SC/WD	PTD.	MTL	PTD.				H1, H3, H4, H5, H6	
	120	GUESTROOM	3'-0"	7'-0"	1-3/4"		20 MIN.	SC/WD	PTD.	MTL	PTD.				H1, H3, H4, H5	
	121	GUESTROOM	3'-0"	7'-0"	1-3/4"		20 MIN.	SC/WD	PTD.	MTL	PTD.				H1, H3, H4, H5	
	122	GUESTROOM	3'-0"	7'-0"	1-3/4"		20 MIN.	SC/WD	PTD.	MTL	PTD.				H1, H3, H4, H5	
	123	GUESTROOM	3'-0"	7'-0"	1-3/4"		20 MIN.	SC/WD	PTD.	MTL	PTD.				H1, H3, H4, H5	
	124	GUESTROOM	3'-0"	7'-0"	1-3/4"		20 MIN.	SC/WD	PTD.	MTL	PTD.				H1, H3, H4, H5	
	125	GUESTROOM	3'-0"	7'-0"	1-3/4"		20 MIN.	SC/WD	PTD.	MTL	PTD.				H1, H3, H4, H5	
	126	GUESTROOM	3'-0"	7'-0"	1-3/4"		20 MIN.	SC/WD	PTD.	MTL	PTD.				H1, H3, H4, H5	
	127	GUESTROOM	3'-0"	7'-0"	1-3/4"		20 MIN.	SC/WD	PTD.	MTL	PTD.				H1, H3, H4, H5	
	128	GUESTROOM	3'-0"	7'-0"	1-3/4"		20 MIN.	SC/WD	PTD.	MTL	PTD.				H1, H3, H4, H5	
	129	GUESTROOM	3'-0"	7'-0"	1-3/4"		20 MIN.	SC/WD	PTD.	MTL	PTD.				H1, H3, H4, H5	
	130	GUESTROOM	3'-0"	7'-0"	1-3/4"		20 MIN.	SC/WD	PTD.	MTL	PTD.				H1, H3, H4, H5	
	131	GUESTROOM	3'-0"	7'-0"	1-3/4"		20 MIN.	SC/WD	PTD.	MTL	PTD.				H1, H3, H4, H5	
	INT-1	GUESTROOM BATH RM	3'-0"	7'-0"	1-3/4"		—	SC/WD	PTD.	MTL	PTD.				H1, H3	
	X150	CORRIDOR	3'-0"	7'-0"	1-3/4"		20 MIN.	SC/WD	PTD.	MTL	PTD.					

WINDOW TYPES (ELEVATION)

WINDOW SCHEDULE

WINDOW TYPE	SIZE		FRAME		GLAZING	HARDWARE GROUP	REMARKS
	WIDTH	HEIGHT	MATERIAL	FINISH			
W1	7'-8 3/4"	7'-6"	MTL	PTD			CASEMENT/ FIXED
W2	6'-1"	7'-6"	MTL	PTD			CASEMENT/ FIXED
W3	6'-1"	7'-0"	MTL	PTD			CASEMENT/ FIXED
W4	7'-8 3/4"	5'-2"	MTL	PTD			CASEMENT/ FIXED
W5	2'-6"	5'-6"	MTL	PTD			FIXED
W6	5'-2"	7'-6"	MTL	PTD			CASEMENT/ FIXED
W7	6'-1"	5'-2"	MTL	PTD			CASEMENT/ FIXED
W8	4'-0"	4'-0"	MTL	PTD			FIXED
W9	2'-6"	7'-6"	MTL	PTD			FIXED
W10	7'-8 1/2"	7'-6"	MTL	PTD			FIXED

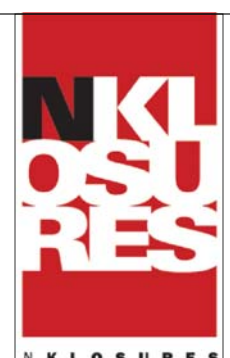
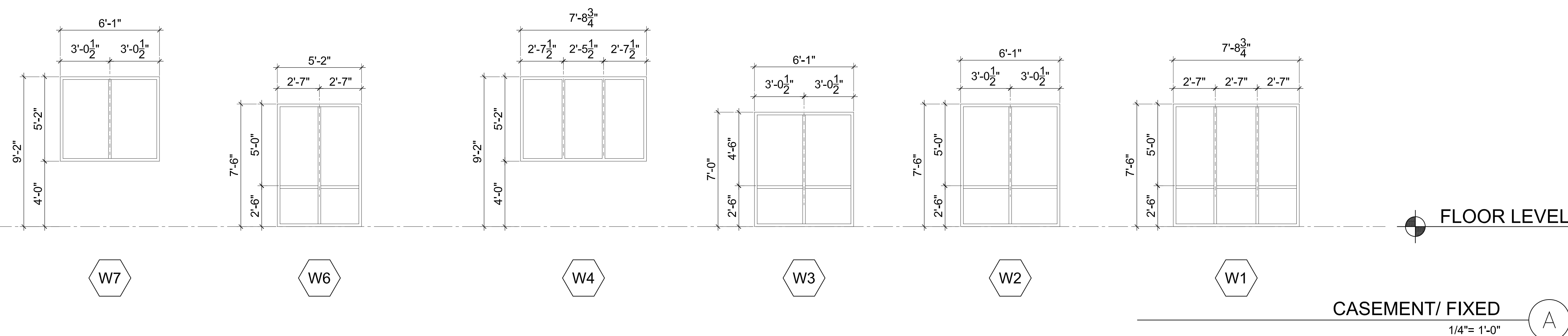
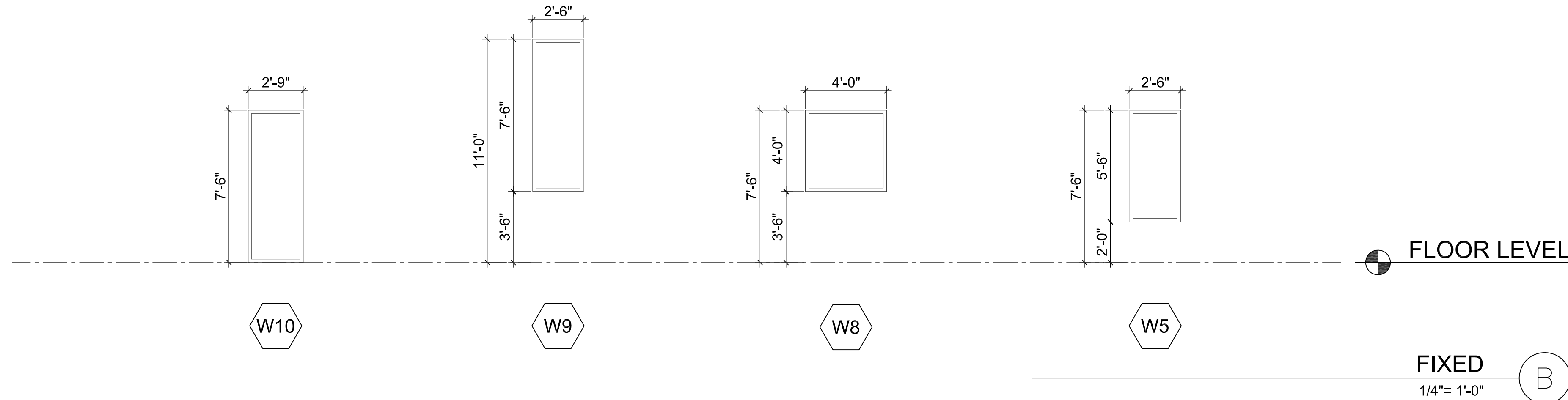
ABBREVIATIONS

AL	-	ALUMINUM
MTL	-	METAL
FF	-	FACTORY PRE-FINISHED
CONC	-	CONCRETE
CMU	-	CONCRETE MASONRY UNIT
CG	-	CLEAR GLASS
SG	-	SOLAR GLASS
TM	-	TEMPERED GLASS
PTD	-	PAINTED
GB	-	GYPSUM BOARD
TBD	-	TO BE DETERMINED

GENERAL NOTES

GENERAL NOTES:

1. PROVIDE COMPLETE WEATHER STRIPPING TO ALL EXTERIOR WINDOWS.
2. ALL THE EXTERIOR WINDOWS SHALL BE DOUBLE GLAZED.
3. THE THICKNESS OF ALL GLAZING IN THE STOREFRONT, WINDOW WALL, OR CURTAIN WALL SYSTEMS SHALL BE 1/4" MINIMUM.
4. FIRE RATED WINDOWS SHALL BEAR A LABEL TO IDENTIFY THE REQUIRED RATING.
5. TEMPERED GLASS AFFIXED WITH PERMANENT LABEL, THAT SPECIFIES THE LABELER AND STATES THAT SAFETY GLAZING MATERIAL HAS BEEN UTILIZED IN SUCH INSTALLATIONS.
6. WINDOW OPENINGS IN EXTERIOR WALLS MUST BE PROTECTED WITH (3/4- HOUR) OR (1-1/2 HOUR) FIRE ASSEMBLIES AS REQUIRED PER CODE.



ARCHITECT:
nKLOSURES, Inc.
Tel: 323.309.7334
Email: info@nKLOSURES.com

1633 VICTORY, LLC

2010 N. HIGHLAND AVENUE,
LOS ANGELES, CA 90068

1633 VICTORY HOTEL

1633 VICTORY BLVD., GLENDALE
SEPTEMBER 14, 2017

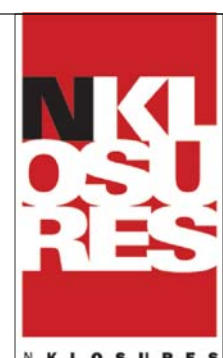
WINDOW SCHEDULE

EXHIBIT

A12



VIEW OF MAIN ENTRANCE (ALONG VICTORY BLVD.)



ARCHITECT:
nKLOSURES, Inc.
Tel: 323.309.7334
Email: info@nKLOSURES.com

1633 VICTORY, LLC

2010 N. HIGHLAND AVENUE,
LOS ANGELES, CA 90068

1633 VICTORY HOTEL

1633 VICTORY BLVD., GLENDALE
SEPTEMBER 14, 2017

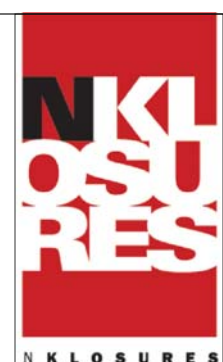
EXTERIOR RENDERING

EXHIBIT

A13



AERIAL VIEW ALONG VICTORY BLVD. AND ALLEY



ARCHITECT:
nKLOSURES, Inc.
 Tel: 323.309.7334
 Email: info@nKLOSURES.com

1633 VICTORY, LLC

2010 N. HIGHLAND AVENUE,
 LOS ANGELES, CA 90068

1633 VICTORY HOTEL

1633 VICTORY BLVD., GLENDALE
 SEPTEMBER 14, 2017

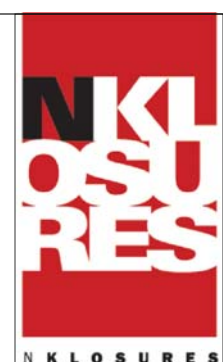
EXTERIOR RENDERING

EXHIBIT

A14



AERIAL VIEW OF MID-BLOCK



ARCHITECT:
nKLOSURES, Inc.
Tel: 323.309.7334
Email: info@nKLOSURES.com

1633 VICTORY, LLC

2010 N. HIGHLAND AVENUE,
LOS ANGELES, CA 90068

1633 VICTORY HOTEL

1633 VICTORY BLVD., GLENDALE
SEPTEMBER 14, 2017

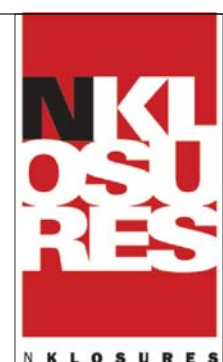
EXTERIOR RENDERING

EXHIBIT

A15



AERIAL VIEW OF MID-BLOCK (WITHOUT PLANTS ON POOL DECK)



ARCHITECT:
nKLOSURES, Inc.
 Tel: 323.309.7334
 Email: info@nKLOSURES.com

1633 VICTORY, LLC

2010 N. HIGHLAND AVENUE,
 LOS ANGELES, CA 90068

1633 VICTORY HOTEL

1633 VICTORY BLVD., GLENDALE
 SEPTEMBER 14, 2017

EXTERIOR RENDERING

EXHIBIT

A16