



IMPLEMENTATION PLAN

A. INTRODUCTION

The purpose of this chapter is to provide strategies for the implementation of the goals and objectives of this element. Implementation strategies are essentially a refinement of the general policies identified in Chapter III and reflects the findings of the Open Space and Conservation Plan. These measures provide a basis or means for City Council, Planning Commission and staff to achieve the objectives of the element. While implementation of each of the strategies contained in this chapter would be desirable, it is recognized that there are competing demands for preservation, development and conservation of resources and that the city's economic resources are limited. Therefore, it may be necessary to prioritize or utilize alternative means to effectively accomplish many of the desired objectives. The implementation section of this document has been organized into the following sections:

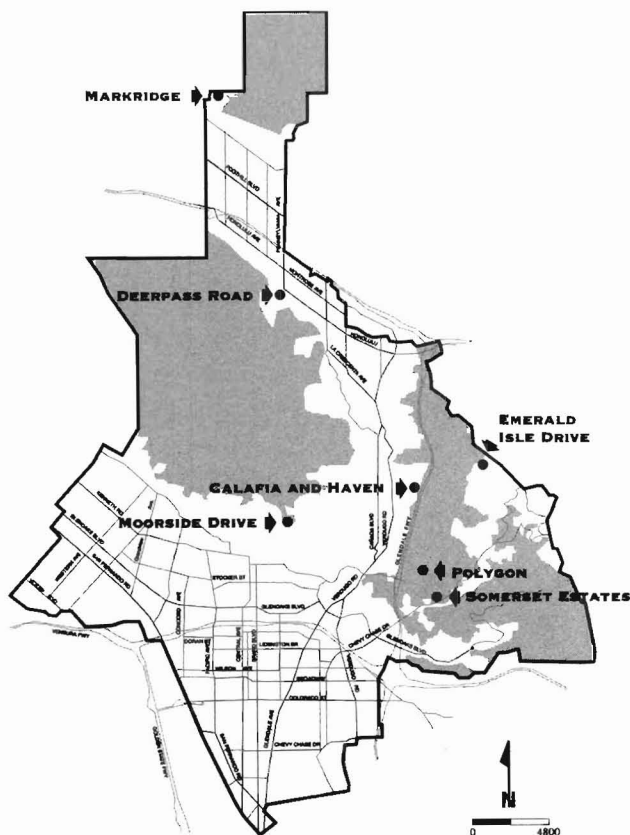
- Acquisition of Natural Resources
- Preservation of Natural Resources
- Conservation of Resources
- Management and Utilization of Natural Resources
- Public Participation

B. ACQUISITION OF NATURAL RESOURCES

Acquisition of undeveloped land provides an effective means to protect open space resources within the community. It offers the greatest degree of assurance that these resources will be protected in the future. The City of Glendale has been successful in utilizing this approach for the use of open space and recreational opportunities. Section C of Chapter IV provides an overview of the

city's acquisition efforts in mountainous areas. The total amount of public open space in the city is more than 5,860 acres. Only 1,540 acres remain in private ownership. Glendale's strategies for acquisition have included the direct purchase of private property, tax delinquent property and surplus state freeway properties as well as acceptance of land as gifts. Glendale also has been successful in obtaining public ownership of open space land through the dedication of property during the subdivision process (see Map 5-1). Glendale has been aided in

MAP 5-1 OPEN SPACE PRESERVED THROUGH SUBDIVISION DESIGN CONDITIONS



its efforts by a variety of state and federal programs including State Land and Water Conservation Grants, Santa Monica Mountains Conservancy funds, and other public programs. Acquisition of open space land should be prioritized according to its environmental sensitivity, ecological, historic or cultural value, impact on surrounding areas, development potential, traffic impacts and its uniqueness or relationship to other open space areas. Map 5-2 has been developed to summarize the location of primary resources analyzed in this element. While this figure identifies where composite resources

occur, it must not necessarily be assumed that a single resource area is less valuable than multiple resource areas. The findings contained in each individual section can serve as a guide to aid in the assessment of the importance of each parcel. However it should be recognized that acquisitions are highly dependent upon available funding, willingness of owners to sell and other factors. Specific actions and programs for the acquisition of natural resources can be summarized as follows:

- Pursue acquisition of property as available on the basis of environmental sensitivity, ecological, historic or cultural value and potential environmental impacts if developed.
- Continue to pursue all available public and private funding programs involving grants, loans, donations, and other forms of financial support from Land and Water Conservation funds, Santa Monica Mountains Conservancy programs, the Trust for Public funds as well as other sources.
- Adopt a development fee ordinance in order to provide a source of funding for open space acquisition and the development of recreational facilities.
- Continue to review tax delinquent property lists and pursue their acquisition as appropriate.
- Encourage the use of conservation easements and promote their tax benefits.
- Encourage user fees where appropriate.
- Consider supporting a bond program for voter consideration.

C. PRESERVATION OF NATURAL RESOURCES

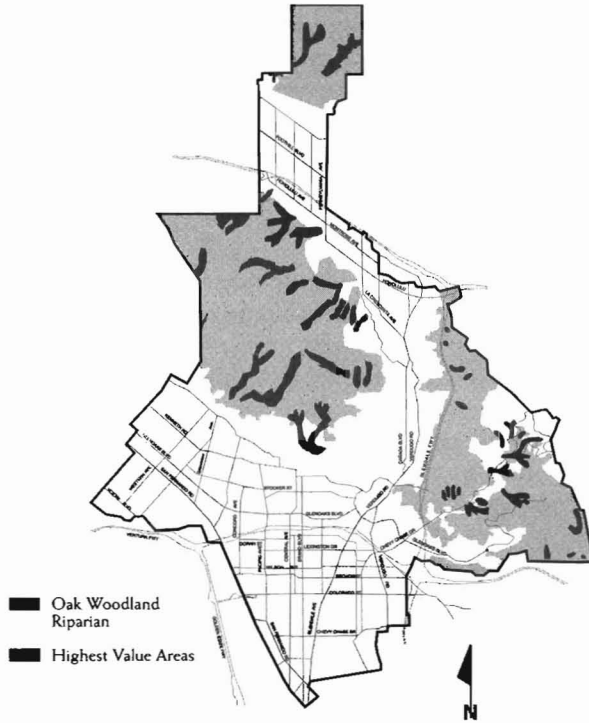
In order to provide for the preservation of Glendale's natural resources the following implementation programs are offered:

- Develop an ordinance that protects primary and secondary ridgelines and blue-line streams from development. Such an ordinance may, by exception, permit limited development within the identified ridgelines and blue-line streams when specific findings are made.
- Revise Glendale's grading ordinance in order to minimize the adverse physical effect of development in environmentally sensitive areas.

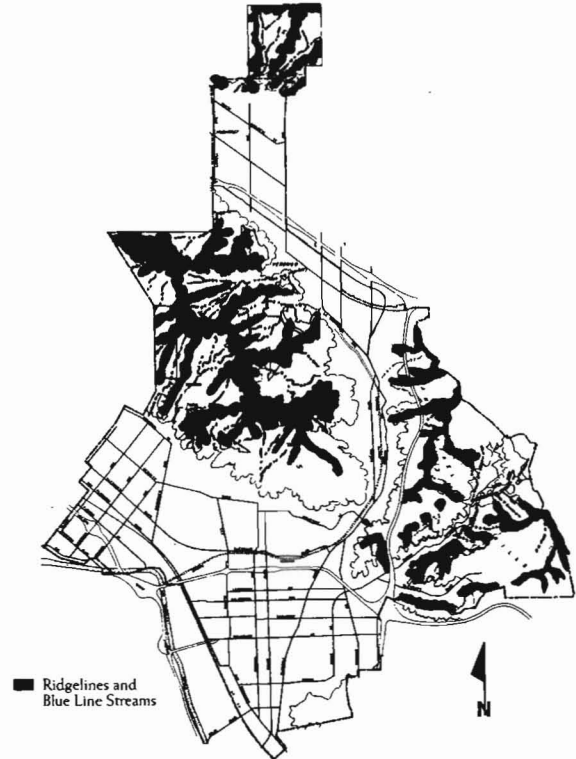


MAP 5-2 COMPOSITE RESOURCES MAP

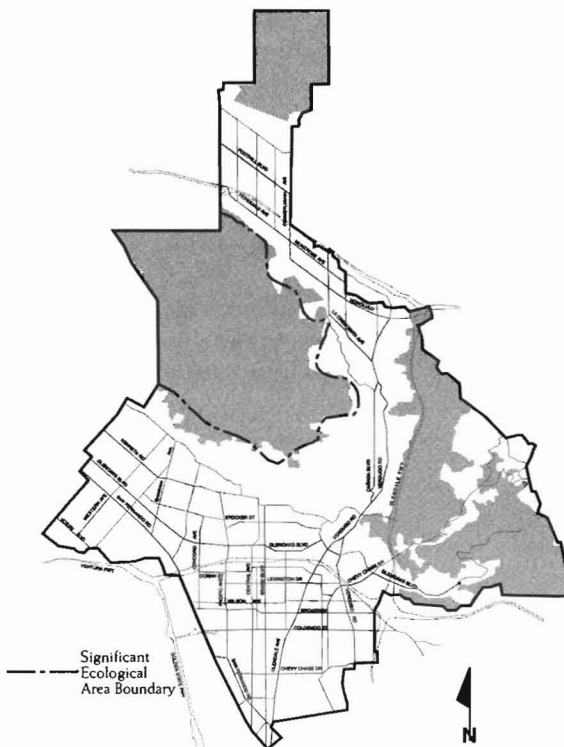
BIOLOGICAL RESOURCES



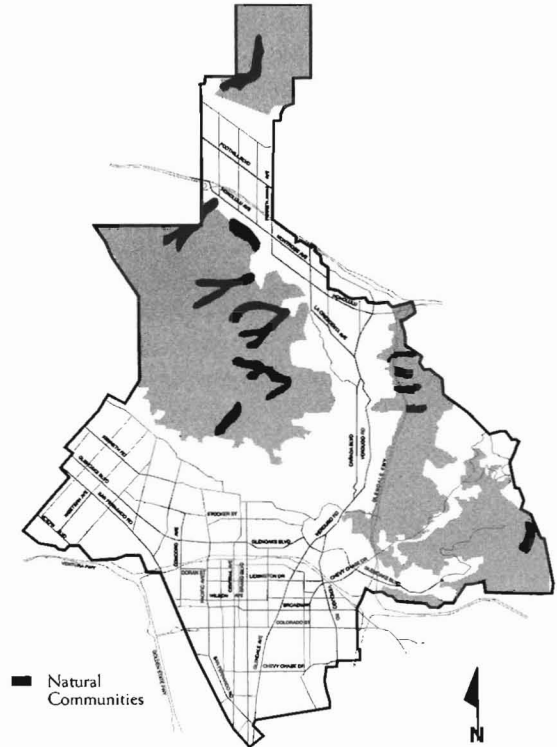
RIDGELINES



SIGNIFICANT ECOLOGICAL AREAS



NATURAL COMMUNITIES



- Prepare design guidelines for subdivision and in-fill properties in order to promote sensitive hillside design.
- Prepare landscape guidelines in order to more effectively treat manufactured slopes and provide compatible transitions to natural terrain.
- Amend Glendale's subdivision ordinance to establish standards that minimize the impact of development in hillside areas.
- Amend Glendale's zoning ordinance to address density, architecture, urban design and related standards for hillside development.
- Continue the architectural review of structures through the design review process.
- Continue plan review in the SR zone to ensure compatible development in mountainous areas.
- Utilize the environmental review process to ensure that development in hillside areas is consistent with the goals and objectives expressed in this element and provides mitigation measures and monitoring for identified impacts.
- Where acquisition of open space land is impractical, ensure that subsequent development incorporates desirable configurations of open space through careful environmental analysis, site planning and other strategies.

D. CONSERVATION OF RESOURCES

- Restrict public access through appropriate signage, barriers and other means to protect sensitive land and habitats from unauthorized use and entry.
- Prohibit off-road motor vehicle usage through continued use of police surveillance.
- Prohibit littering or dumping of trash, debris or disposal of hazardous waste material through the continuation of the hazardous material program and the provision of waste bins to minimize illegal dumping.
- Prohibit incompatible recreational activities, over-utilization or conflicting recreational pursuits, which may damage sensitive open space areas or may diminish the enjoyment of the open space resources, through effective open space/park management.

- Assess the habitat quality of Glendale's open space areas, particularly those identified in the California Department of Fish and Game Natural Diversity Data Base, and those sensitive habitats containing rare and endangered species as identified in this element's biological assessment report, through consultation with a qualified biologist at regular intervals.
- Establish a revegetation program to naturalize disturbed areas and to prevent the invasion of non-native plant material.
- Preserve natural stream channel systems and water courses important to groundwater recharge, particularly those identified by the California Department of Fish and Game, as permitted by law.
- Continue to prohibit the commercial extraction of mineral resources in designated open space areas.
- Continue the City's Urban Forestry and Streetscape programs to visually enhance Glendale's neighborhoods and to provide linkages to open space areas.
- Identify important bikeways, trails, parks, vista points, recreational facilities, historic and cultural sites and scenic roadways through appropriate signage and information programs.
- Revise and update the Historic Preservation Element of the Comprehensive General Plan of the City of Glendale and conduct inventories of buildings and sites to determine their historic, cultural, archaeological, architectural and aesthetic value.
- Continue to implement regulations designed to minimize fire risks through standards pertaining to roof materials, sprinkler systems, eave overhang construction, building materials and structure design.
- Review development plans to ensure the safety of residents through adequate emergency vehicle access, the spacing of hydrants and the availability of water pressure.
- Continue Glendale's enforcement efforts through brush clearance, fuel modification zones and education of residents adjacent to wildland areas.
- Continue to support the efforts of the Los Angeles County Department of Public Works in maintaining and improving Glendale's flood control systems and to continue improvements to Glendale's flood control systems by allocating funds through the Capital Improvement Program.



- Review development proposals to ensure protection against mud slide damage.
- Identify noise sources and mitigate, where necessary, to ensure compliance with Glendale's Noise Element through project development review and the environmental review process.
- Adopt an Air Quality Element as part of the Comprehensive General Plan following the requirements of the South Coast Air Quality Management District (SCAQMD).
- Continue the use and encourage the expansion of the City's alternative fuel vehicles.
- Continue Glendale's water reclamation program and consider its expansion.
- Continue to require sewer connections for all development within the corporate limits and encourage sewer connections in other areas that are part of Glendale's ground water basins.
- Continue Glendale's water conservation program through public awareness efforts.
- Consider water needs in the review of landscaping plans and encourage the use of drought tolerant landscaping materials.
- Comply with the National Pollutant Discharge Elimination System (NPDES) permit requirements to ensure surface water quality and to minimize the introduction of pollutants into drainage courses.
- Continue Glendale's hazardous materials collection program to minimize the potential introduction of toxics into groundwater basins and landfills.
- Identify existing trails and develop new trails that respect the integrity of open space lands and provide linkages between important resources.
- Evaluate and monitor the impacts of public access on habitat through scheduled surveys and investigations.
- Integrate a trail system with the scenic roadway and bikeway plans as specified in the Circulation and Scenic Highways Element of the Comprehensive General Plan.
- Develop a multi-functional path and trail system in open space or wilderness areas recognizing natural resource conservation constraints.
- Expand the existing hiking trail system, providing for trailheads, trail improvements, rest stops, picnic areas, view areas and path demarcation, paying particular attention to scenic resources, recreational opportunities and the impact of accessways on sensitive habitats through property acquisition and the attainment of easements through use of grants and subsidies.
- Encourage maintenance of trails by recreational, educational or other organizations.
- Coordinate, with adjacent jurisdictions including the Santa Monica Mountains Conservancy, the connection of Glendale's hiking and equestrian trails with other local or regional systems.
- Provide access to trailheads and other recreational opportunities through the coordination of transportation systems identified in the Circulation and Scenic Highways Element of the Comprehensive General Plan.
- Continue the City's Park Ranger Program to provide assistance to the open space user.

E. MANAGEMENT AND UTILIZATION OF NATURAL RESOURCES

- Provide access for recreational and educational opportunities for all segments of the population through coordination with non-profit organizations for the development of docent, park and public school programs in an effort to provide outdoor educational experiences for the public and consider use of existing facilities, development of new facilities, and subsidies to ensure wide scale use of such programs.

F. PUBLIC PARTICIPATION

- Involve concerned community groups in the identification, acquisition and management of natural resource areas, recreational facilities, historic and cultural sites, aesthetics and beautification programs.
- Facilitate a continuing program of environmental resource presentations, surveys and workshops to educate and inform the public and to ensure maximum public participation and input for all aspects of environmental resource planning and implementation.

