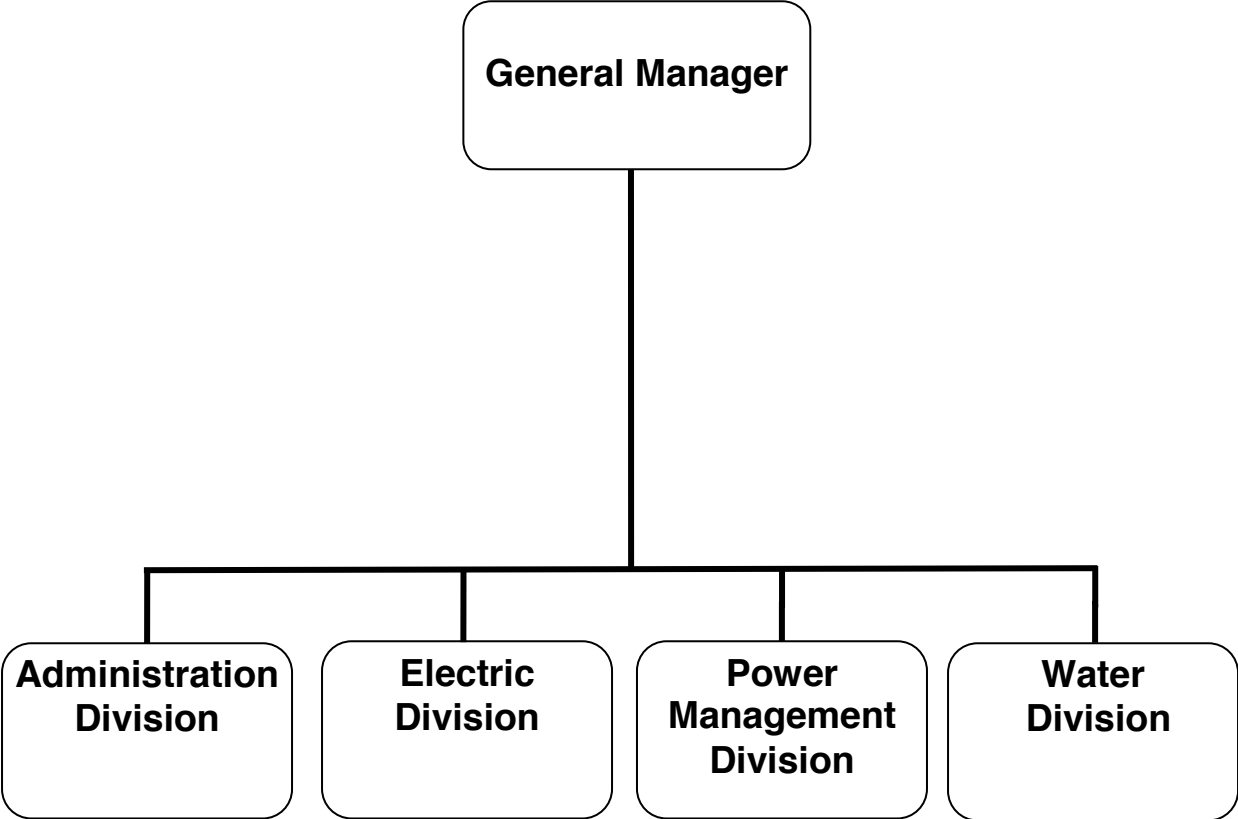


FISCAL YEAR
2018-19

ADOPTED BUDGET

GLENDALE WATER
& POWER

GLENDALE WATER & POWER



CITY OF GLENDALE

GLENDALE WATER & POWER

MISSION STATEMENT

Glendale Water & Power's mission is to cost effectively provide its customers with safe, efficient, reliable and sustainable water and power services at reasonable costs. This mission is accomplished through the prudent use of resources, technology, innovation, teamwork and planning to ensure sufficient supply for today and into the future.

DEPARTMENT DESCRIPTION

GWP consists of four divisions:

- Administration Division
- Electric Division
- Power Management Division
- Water Division

The focus of these divisions is to ensure that the City is served well today, and is poised to meet future challenges. The key components in Glendale Water & Power's operation include:

Electric Services – Provide safe, reliable and efficient electric service by maintaining and making continuous improvements in the power delivery system.

Power Management Services – Ensure reliable power supply under severe legislative regulatory controls and restrictions through a portfolio of resources.

Water Services - Provide safe and reliable water services that meet or exceed regulatory water quality requirements while optimizing the local production of water resources including water recycling, while efficiently pumping and storing water to minimize energy use.

Customer Service - Achieve high customer satisfaction levels by increasing the value of the programs and services GWP offers and working to continuously provide information to customers on how they can make informed decisions on water and energy use.

Rates - Achieve water and electric rates that will support the infrastructure needs and are appropriate for the level of service provided.

Infrastructure - Assure high service reliability by continuously improving and maintaining the GWP physical plant, electric and water facilities.

Work Force – Through succession planning, develop, retain and promote a safe, highly skilled, dedicated, and customer-focused work force.

Utility Modernization – Continuously develop and improve programs, systems and technologies to reduce GWP's costs while enhancing customer communications and increasing operational effectiveness.

Legislation & Regulation – Monitor, participate, and influence local, state, and federal legislation and regulations to provide the most benefit to Glendale Water & Power's customers.

Safety – Provide a safe environment for our staff and the community.

CITY OF GLENDALE

GLENDALE WATER & POWER

RELATIONSHIP TO CITY COUNCIL PRIORITIES

Exceptional Customer Service

Glendale Water & Power is committed to providing its residents with extraordinary customer service centered on the principles of integrity, quality, and customer satisfaction through the reliable and efficient delivery of energy and water services to every customer served. This includes ensuring minimal service disruptions to the extent possible, providing reasonable and reliable utility rates, and responding to customer inquiries in a prompt and professional manner.

Environmental Sustainability

Glendale Water and Power is always looking for ways to minimize environmental impacts and promote sustainable water and power resources. GWP's Water Division is committed to using more local sources of water and reducing the amount of imported water in its portfolio. The Water Division has been a pioneer in the use of recycled water since 1978 -one of the first in California. GWP's Electric Division recently completed an Integrated Resource Plan that includes increasing the amount of renewable energy sources in the future. Also, GWP has been utilizing the City's landfill gas as a renewable energy source for over 20 years, which has resulted in the added benefit of creating fewer greenhouse gas emissions from the landfill.

Economic Vibrancy

Glendale Water & Power is committed to provide its customers with reliable and sustainable water and power services that are cost effective and innovative. The new Electric and Water rates were approved by Glendale City Council setting forth a new rate structure for the next 5 years. This includes the establishment of an internally funded capital improvement program ("Pay-Go") to address core infrastructure needs, and to maintain City Council approved reserve fund levels.

Informed & Engaged Community

Glendale Water & Power pro-actively shares information and engages the community regarding important issues via multiple communication platforms. Recent illustrative examples include the significant outreach related to the possibility of power outages due to the gas storage issues: GWP performed extensive public outreach involving community presentations, distribution of flyers and notices, and the use of social media. GWP also held Customer Service in your neighborhood Events at four various locations throughout the City, giving residents the opportunity to learn more about GWP's billing and payment options, how to make electronic payments, enroll in various GWP programs, and meet staff who can answer their questions about the Utility.

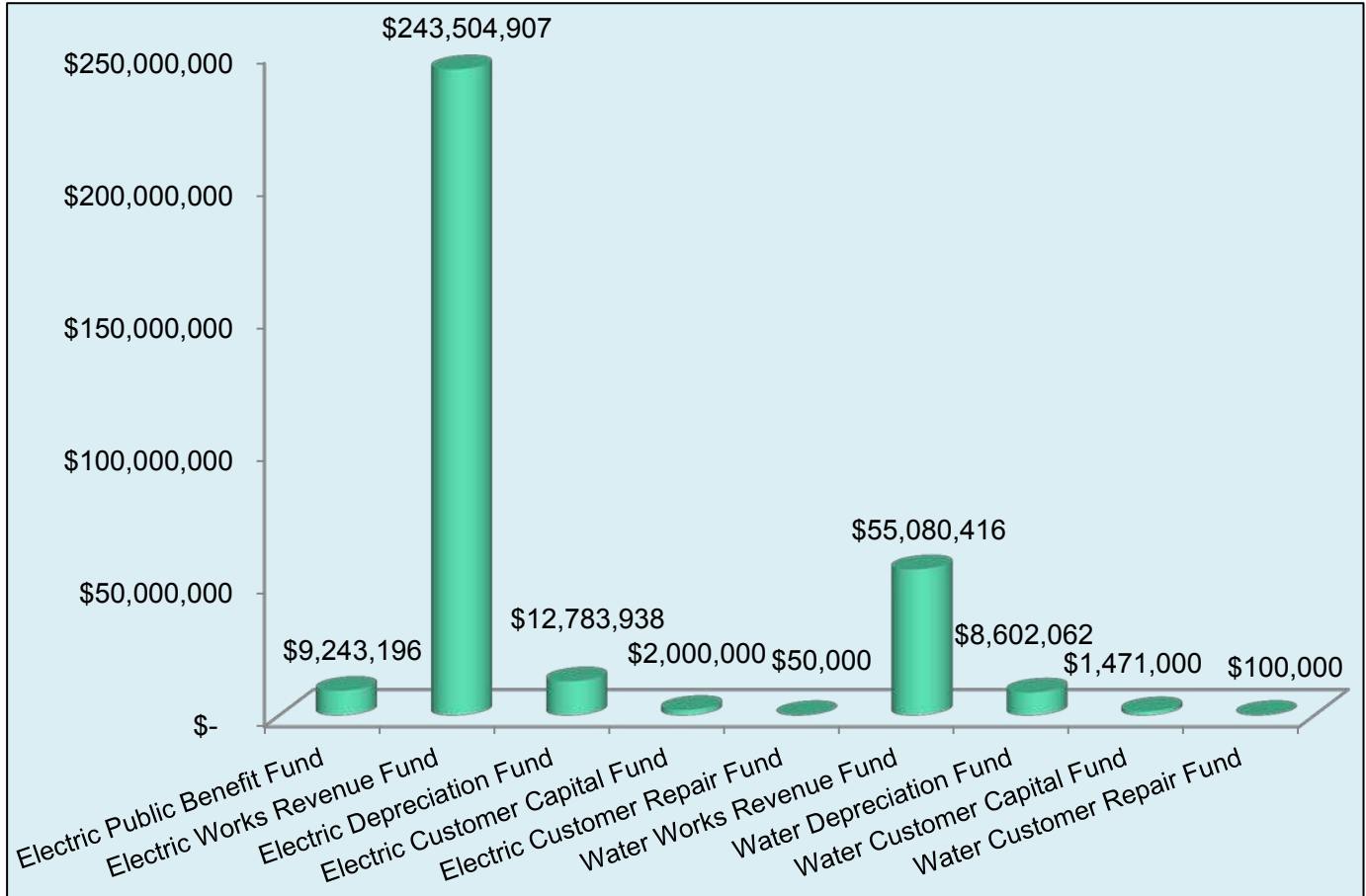
Infrastructure & Mobility

GWP strives to continue providing reliable services as measured by:

- Reduce the total number of preventable power outages below 25 per year.
- Implementation of the 10 Year Water Capital Improvement Program in a manner consistent with long term Water Master Plan to upgrade aging infrastructure while reflecting the ongoing financial, environmental and organizational challenges that utilities continue to face.
- Deliver and serve water that meets all federal, state and local drinking water standards.

**CITY OF GLENDALE
 GLENDALE WATER AND POWER DEPARTMENT
 FY 2018-19 ADOPTED BUDGET BY FUND**

The total Glendale Water and Power Department Adopted FY 2018-19 Budget is \$332,835,519. The appropriation by fund is as follows:



**CITY OF GLENDALE
SUMMARY OF APPROPRIATIONS
GLENDALE WATER & POWER DEPARTMENT
FOR THE YEARS ENDING JUNE 30**

	Actual 2016-17	Adopted* 2017-18	Revised 2017-18	Adopted 2018-19
Electric Public Benefits Fund				
Electric Public Benefit Fund (290-901)	\$ 6,720,326	\$ -	\$ -	\$ -
Electric Public Benefit Fund (291-480)	-	8,284,181	8,293,555	9,243,196
Total Electric Public Benefits Fund	\$ 6,720,326	\$ 8,284,181	\$ 8,293,555	\$ 9,243,196
<u>Electric Utility</u>				
Electric Surplus Fund-Administration (550-911)	\$ 19,911,805	\$ -	\$ -	\$ -
Electric Works Revenue Fund				
GWP Administration (552-911)	\$ 30,935,623	\$ -	\$ -	\$ -
Power Management (552-921)	101,612,608	-	-	-
Electric Services (552-931)	29,904,306	-	-	-
Customer Services (552-971)	3,177,518	-	-	-
Administration (582-450)	-	68,525,662	68,546,451	69,073,982
Customer Services (582-451)	-	7,367,494	7,443,469	7,487,301
Conservation and Utility Modernization (582-452)	-	3,779,593	3,793,522	4,083,422
Utility Finance (582-453)	-	432,066	440,325	328,916
Environmental and Safety (582-454)	-	904,524	914,567	861,499
Utility Operation Center and Warehouse (582-455)	-	1,114,155	1,122,015	1,065,896
Yard Administration (582-456)	-	112,790	115,020	223,952
Engineering (582-460)	-	5,082,091	5,144,035	4,834,177
Customer Support (582-461)	-	840,600	858,867	1,016,162
Street Light (582-462)	-	523,881	523,881	553,642
Howard Substation (582-463)	-	2,467,054	2,470,480	2,818,742
Meter and Test Shop (582-464)	-	1,665,431	1,668,931	1,563,713
Station Maintenance (582-465)	-	3,983,968	3,991,809	3,702,081
Overhead and Underground (582-466)	-	7,394,306	7,417,013	7,233,073
Substructure (582-467)	-	688,241	688,241	828,661
Power Management (582-468)	-	140,215,222	140,253,619	124,732,260
Power Plant (582-469)	-	13,527,052	13,563,865	13,097,428
Total Electric Works Revenue Fund	\$ 165,630,055	\$ 258,624,130	\$ 258,956,110	\$ 243,504,907
Electric Depreciation Fund				
GWP Administration (553-911)	\$ (15,276,856)	\$ -	\$ -	\$ -
Power Management (553-921)	9,733,063	-	-	-
Electric Services (553-931)	5,543,794	-	-	-
Electric Depreciation Fund Projects (583-490)	-	6,485,320	7,224,832	12,783,938
Total Electric Depreciation Fund	\$ -	\$ 6,485,320	\$ 7,224,832	\$ 12,783,938
Electric Customer Paid Capital Fund				
Electric Services (555-931)	\$ -	\$ -	\$ -	\$ -
Electric Customer Capital -GWP Projects (585-490)	-	1,819,781	1,819,781	2,000,000
Total Electric Customer Paid Capital Fund	\$ -	\$ 1,819,781	\$ 1,819,781	\$ 2,000,000
Energy Cost Adjustment Charge Fund (556-921)	\$ 9,567,665	\$ -	\$ -	\$ -
Regulatory Adjustment Charge Fund (557-921)	\$ 11,186,300	\$ -	\$ -	\$ -
SCAQMD State Sales (584-450)	\$ -	\$ -	\$ 479,012	\$ -
Electric Customer Repair Fund (588-490)	\$ -	\$ -	\$ -	\$ 50,000
Total Electric Utility	\$ 206,295,824	\$ 266,929,231	\$ 268,479,735	\$ 258,338,845
<u>Water Utility</u>				
Water Works Revenue Fund				
GWP Administration (572-911)	\$ 9,211,926	\$ -	\$ -	\$ -
Water Services (572-951)	32,643,273	-	-	-

**CITY OF GLENDALE
SUMMARY OF APPROPRIATIONS
GLENDALE WATER & POWER DEPARTMENT
FOR THE YEARS ENDING JUNE 30**

	Actual 2016-17	Adopted* 2017-18	Revised 2017-18	Adopted 2018-19
Customer Services (572-971)	1,457,649	-	-	-
Administration (592-450)	-	14,978,766	14,982,114	16,275,417
Customer Services (592-451)	-	2,321,724	2,334,928	2,333,935
Conservation and Utility Modernization (592-452)	-	1,061,931	1,064,095	1,273,894
Utility Finance (592-453)	-	121,861	123,145	92,776
Environmental and Safety (592-454)	-	255,258	256,819	252,256
Utility Operation Center and Warehouse (592-455)	-	314,229	315,481	338,121
Yard Administration (592-456)	-	31,809	32,156	63,212
Water Engineering (592-470)	-	6,548,166	21,761,227	22,138,414
Water Distribution (592-471)	-	3,573,014	3,583,115	3,835,010
Water Operation (592-472)	-	22,334,723	7,153,031	6,569,112
Water Quality (592-473)	-	1,734,479	1,737,590	1,908,269
Total Water Works Revenue Fund	\$ 43,312,847	\$ 53,275,960	\$ 53,343,701	\$ 55,080,416
Water Depreciation Fund				
GWP Administration (573-911)	\$ (3,681,422)	\$ -	\$ -	\$ -
Water Services (573-951)	3,681,422	-	-	-
Water Depreciation Fund Projects (593-490)	-	2,983,680	2,983,680	8,602,062
Total Water Depreciation Fund	\$ -	\$ 2,983,680	\$ 2,983,680	\$ 8,602,062
Water Customer Paid Capital Fund				
Water Services (575-951)	\$ -	\$ -	\$ -	\$ -
Water Customer Paid Capital - GWP Projects (595-490)	-	1,471,000	1,471,000	1,471,000
Total Water Customer Paid Capital Fund	\$ -	\$ 1,471,000	\$ 1,471,000	\$ 1,471,000
Water Customer Repair Fund (598-490)	\$ -	\$ -	\$ -	\$ 100,000
Total Water Utility	\$ 43,312,847	\$ 57,730,640	\$ 57,798,381	\$ 65,253,478
Department Grand Total	\$ 256,328,997	\$ 332,944,052	\$ 334,571,671	\$ 332,835,519

Notes:

* Effective FY 2017-18 new fund numbers were created for all GWP funds.

**CITY OF GLENDALE
 GLENDALE WATER & POWER DEPARTMENT
 ELECTRIC PUBLIC BENEFIT FUND - PUBLIC BENEFITS*
 290-901**

		Actual 2016-17	Adopted 2017-18	Revised 2017-18	Adopted 2018-19
Salaries & Benefits					
41100	Salaries	\$ 299,644	\$ -	\$ -	\$ -
41200	Overtime	4,795	-	-	-
Various	Benefits	108,853	-	-	-
42700	PERS Retirement	70,696	-	-	-
42701	PERS cost sharing	(10,370)	-	-	-
Salaries & Benefits Total		\$ 473,618	\$ -	\$ -	\$ -
Maintenance & Operation					
43110	Contractual services	\$ 1,561,479	\$ -	\$ -	\$ -
43150	Cost allocation charge	74,342	-	-	-
44352	ISD service charge	29,904	-	-	-
44450	Postage	2,096	-	-	-
44750	Liability Insurance	8,258	-	-	-
45512	Public benefit programs	4,556,806	-	-	-
46500	Uncollectible accounts	13,785	-	-	-
47000	Miscellaneous	37	-	-	-
Maintenance & Operation Total		\$ 6,246,708	\$ -	\$ -	\$ -
TOTAL		\$ 6,720,326	\$ -	\$ -	\$ -

Notes:

* Effective FY 2017-18 Electric Public Benefit Fund number (290) is under Fund number 291.

**CITY OF GLENDALE
 GLENDALE WATER & POWER DEPARTMENT
 ELECTRIC PUBLIC BENEFIT FUND - PUBLIC BENEFITS*
 291-480**

		Actual 2016-17	Adopted 2017-18	Revised 2017-18	Adopted 2018-19
Salaries & Benefits					
41100	Salaries	\$ -	\$ 385,425	\$ 393,717	\$ 429,311
41200	Overtime	-	5,000	5,000	10,150
41300	Hourly wages	-	72,100	73,182	74,420
Various	Benefits	-	118,579	118,579	120,964
42700	PERS Retirement	-	120,969	120,969	148,801
42701	PERS cost sharing	-	(18,211)	(18,211)	(20,034)
Salaries & Benefits Total		\$ -	\$ 683,862	\$ 693,236	\$ 763,612
Maintenance & Operation					
43110	Contractual services	\$ -	\$ 3,107,200	\$ 3,107,200	\$ 3,824,000
43150	Cost allocation charge	-	97,604	97,604	95,181
44352	ISD service charge	-	32,291	32,291	35,929
44353	Building Maint. Serv. Charge	-	37,790	37,790	37,359
44356	GWP municipal billing	-	227,378	227,378	227,378
44450	Postage	-	5,000	5,000	5,000
44550	Travel	-	3,300	3,300	3,300
44650	Training	-	1,500	1,500	1,500
44750	Liability Insurance	-	12,537	12,537	17,937
45250	Office supplies	-	2,000	2,000	2,000
45512	Public benefit programs	-	4,027,729	4,027,729	4,214,000
46500	Uncollectible accounts	-	25,000	25,000	-
46900	Business meetings	-	1,000	1,000	1,000
47000	Miscellaneous	-	19,990	19,990	15,000
Maintenance & Operation Total		\$ -	\$ 7,600,319	\$ 7,600,319	\$ 8,479,584
TOTAL		\$ -	\$ 8,284,181	\$ 8,293,555	\$ 9,243,196

Notes:

* Effective FY 2017-18 Electric Public Benefit Fund number (290) is under Fund number 291.

**CITY OF GLENDALE
 GLENDALE WATER & POWER DEPARTMENT
 ELECTRIC SURPLUS FUND - GWP ADMINISTRATION
 550-911**

		Actual 2016-17	Adopted 2017-18	Revised 2017-18	Adopted 2018-19
Transfers					
48010	Transfer-General Fund	\$ 19,911,805	\$ -	\$ -	\$ -
Transfers Total		\$ 19,911,805	\$ -	\$ -	\$ -
TOTAL		\$ 19,911,805	\$ -	\$ -	\$ -

Notes:

* Effective FY 2017-18 Electric Surplus Fund number (550) is under Fund number 581.

**CITY OF GLENDALE
 GLENDALE WATER & POWER DEPARTMENT
 ELECTRIC WORKS REVENUE FUND - GWP ADMINISTRATION *
 552-911**

		Actual 2016-17	Adopted 2017-18	Revised 2017-18	Adopted 2018-19
Maintenance & Operation					
43110	Contractual services	\$ 39,717	\$ -	\$ -	\$ -
46000	Depreciation	25,468,612	-	-	-
47050	Interest on bonds	5,427,294	-	-	-
Maintenance & Operation Total		\$ 30,935,623	\$ -	\$ -	\$ -
TOTAL		\$ 30,935,623	\$ -	\$ -	\$ -

Notes:

* Effective FY 2017-18 Electric Works Revenue Fund (552) is under Fund number 582.

**CITY OF GLENDALE
 GLENDALE WATER & POWER DEPARTMENT
 ELECTRIC WORKS REVENUE FUND - POWER MANAGEMENT*
 552-921**

		Actual 2016-17	Adopted 2017-18	Revised 2017-18	Adopted 2018-19
Salaries & Benefits					
41100	Salaries	\$ 4,814,483	\$ -	\$ -	\$ -
41200	Overtime	819,995	-	-	-
41300	Hourly wages	1,845	-	-	-
Various	Benefits	1,296,489	-	-	-
42700	PERS Retirement	1,122,695	-	-	-
42701	PERS cost sharing	(162,507)	-	-	-
Salaries & Benefits Total		\$ 7,893,000	\$ -	\$ -	\$ -
Maintenance & Operation					
43050	Repairs-bldgs & grounds	\$ 6,299	\$ -	\$ -	\$ -
43060	Utilities	2,226,406	-	-	-
43070	Lease payments	1,632	-	-	-
43090	Equipment usage	6,349	-	-	-
43110	Contractual services	3,986,527	-	-	-
44100	Repairs to equipment	138,314	-	-	-
44450	Postage	703	-	-	-
44550	Travel	28,970	-	-	-
44600	Laundry & towel service	9,637	-	-	-
44650	Training	38,200	-	-	-
44750	Liability Insurance	152,799	-	-	-
44760	Regulatory	351,174	-	-	-
44761	RAC variance	(11,186,300)	-	-	-
44800	Membership & dues	400	-	-	-
45050	Periodicals & newspapers	3,600	-	-	-
45170	Computer hardware	1,423	-	-	-
45250	Office supplies	3,977	-	-	-
45300	Small tools	3,192	-	-	-
45350	General supplies	703,607	-	-	-
45501	Fuel-landfill gas	2,472,865	-	-	-
45502	Fuel-natural gas	9,594,679	-	-	-
45506	Carbon allowances	225,597	-	-	-
45507	Renewable energy credits	(952,169)	-	-	-
45509	ECAC variance	(9,567,665)	-	-	-
45510	Purchased power	90,993,629	-	-	-
45511	Hedging costs	(220,000)	-	-	-
45600	A & G overhead	3,814,308	-	-	-
45621	Employee benefit overhead	(56,122)	-	-	-
46001	Gas depletion	934,982	-	-	-
46900	Business meetings	1,984	-	-	-
47000	Miscellaneous	611	-	-	-
Maintenance & Operation Total		\$ 93,719,608	\$ -	\$ -	\$ -
TOTAL		\$ 101,612,608	\$ -	\$ -	\$ -

Notes:

* Effective FY 2017-18 Electric Works Revenue Fund (552) is under Fund number 582.

**CITY OF GLENDALE
 GLENDALE WATER & POWER DEPARTMENT
 ELECTRIC WORKS REVENUE FUND - ELECTRIC SERVICES*
 552-931**

		Actual 2016-17	Adopted 2017-18	Revised 2017-18	Adopted 2018-19
Salaries & Benefits					
41100	Salaries	\$ 8,714,064	\$ -	\$ -	\$ -
41200	Overtime	1,374,114	-	-	-
41300	Hourly wages	109,454	-	-	-
Various	Benefits	2,304,980	-	-	-
42601	PARS supplemental retirement	714,024	-	-	-
42700	PERS Retirement	1,362,454	-	-	-
42701	PERS cost sharing	(277,417)	-	-	-
Salaries & Benefits Total		\$ 14,301,672	\$ -	\$ -	\$ -
Maintenance & Operation					
43050	Repairs-bldgs & grounds	\$ 6,350	\$ -	\$ -	\$ -
43060	Utilities	176,526	-	-	-
43070	Lease payments	2,177	-	-	-
43090	Equipment usage	1,043,547	-	-	-
43110	Contractual services	1,323,632	-	-	-
43111	Construction services	64,724	-	-	-
43150	Cost allocation charge	3,684,683	-	-	-
44100	Repairs to equipment	15,500	-	-	-
44300	Telephone	13,900	-	-	-
44350	Vehicle maintenance	8	-	-	-
44450	Postage	743	-	-	-
44550	Travel	2,169	-	-	-
44600	Laundry & towel service	109	-	-	-
44650	Training	49,881	-	-	-
44700	Computer software	200	-	-	-
44750	Liability Insurance	276,337	-	-	-
44760	Regulatory	23,471	-	-	-
44800	Membership & dues	154,996	-	-	-
45100	Books	526	-	-	-
45170	Computer hardware	3,072	-	-	-
45200	Maps & blue prints	313	-	-	-
45250	Office supplies	18,394	-	-	-
45300	Small tools	46,165	-	-	-
45350	General supplies	1,216,327	-	-	-
45512	Public benefit programs	(44)	-	-	-
45600	A & G overhead	7,159,239	-	-	-
45621	Employee benefit overhead	(236,283)	-	-	-
45622	Customer services allocation	425,235	-	-	-
45623	General plant allocation	28,792	-	-	-
46900	Business meetings	1,395	-	-	-
47000	Miscellaneous	100,550	-	-	-
Maintenance & Operation Total		\$ 15,602,634	\$ -	\$ -	\$ -
TOTAL		\$ 29,904,306	\$ -	\$ -	\$ -

Notes:

* Effective FY 2017-18 Electric Works Revenue Fund (552) is under Fund number 582.

CITY OF GLENDALE
GLENDALE WATER & POWER DEPARTMENT
ELECTRIC WORKS REVENUE FUND - CUSTOMER SERVICES*
552-971

	Actual 2016-17	Adopted 2017-18	Revised 2017-18	Adopted 2018-19
Maintenance & Operation				
45610 Section overhead	\$ 123,877	\$ -	\$ -	\$ -
45622 Customer services allocation	3,053,642	-	-	-
Maintenance & Operation Total	\$ 3,177,518	\$ -	\$ -	\$ -
TOTAL	\$ 3,177,518	\$ -	\$ -	\$ -

Notes:

* Effective FY 2017-18 Electric Works Revenue Fund (552) is under Fund number 582.

**CITY OF GLENDALE
 GLENDALE WATER & POWER DEPARTMENT
 ELECTRIC WORKS REVENUE FUND - GWP ADMINISTRATION *
 582-450**

		Actual 2016-17	Adopted 2017-18	Revised 2017-18	Adopted 2018-19
Salaries & Benefits					
41100	Salaries	\$ -	\$ 690,383	\$ 710,478	\$ 824,573
41200	Overtime	-	1,560	1,560	7,917
41300	Hourly wages	-	46,308	47,002	36,228
Various	Benefits	-	175,973	175,973	179,661
42700	PERS Retirement	-	194,420	194,420	245,473
42701	PERS cost sharing	-	(29,268)	(29,268)	(33,046)
Salaries & Benefits Total		\$ -	\$ 1,079,376	\$ 1,100,165	\$ 1,260,806
Maintenance & Operation					
43060	Utilities	\$ -	\$ 57,330	\$ 57,330	\$ 57,330
43110	Contractual services	-	565,500	565,500	565,500
43150	Cost allocation charge	-	5,493,166	5,493,166	5,444,511
44120	Repairs to office equip	-	1,560	1,560	1,500
44351	Fleet / equip rental charge	-	1,063,959	1,063,959	1,063,959
44352	ISD service charge	-	2,847,679	2,847,679	2,895,890
44353	Building Maint. Serv. Charge	-	1,762,408	1,762,408	1,827,770
44450	Postage	-	780	780	700
44550	Travel	-	15,600	15,600	15,600
44650	Training	-	3,900	3,900	3,900
44750	Liability Insurance	-	20,006	20,006	29,266
44751	Insurance/surety bond premium	-	409,500	409,500	417,690
44760	Regulatory	-	15,600	15,600	15,600
44800	Membership & dues	-	1,248	1,248	1,200
45050	Periodicals & newspapers	-	1,560	1,560	1,500
45250	Office supplies	-	39,390	39,390	25,000
45350	General supplies	-	78,000	78,000	50,000
45450	Printing and graphics	-	19,500	19,500	10,000
46000	Depreciation	-	26,450,000	26,450,000	25,920,000
46900	Business meetings	-	5,460	5,460	5,000
47000	Miscellaneous	-	24,180	24,180	15,000
47050	Interest on bonds	-	8,409,960	8,409,960	8,409,960
Maintenance & Operation Total		\$ -	\$ 47,286,286	\$ 47,286,286	\$ 46,776,876
Transfers					
48010	Transfer-General Fund	\$ -	\$ 20,160,000	\$ 20,160,000	\$ 21,036,300
Transfers Total		\$ -	\$ 20,160,000	\$ 20,160,000	\$ 21,036,300
TOTAL		\$ -	\$ 68,525,662	\$ 68,546,451	\$ 69,073,982

Notes:

* Effective FY 2017-18 Electric Works Revenue Fund (552) is under Fund number 582.

**CITY OF GLENDALE
 GLENDALE WATER & POWER DEPARTMENT
 ELECTRIC WORKS REVENUE FUND - GWP ADMINISTRATION - CUSTOMER SERVICES *
 582-451**

		Actual 2016-17	Adopted 2017-18	Revised 2017-18	Adopted 2018-19
Salaries & Benefits					
41100	Salaries	\$ -	\$ 2,620,017	\$ 2,695,743	\$ 2,713,463
41200	Overtime	-	30,780	30,780	31,465
41300	Hourly wages	-	16,595	16,844	19,285
Various	Benefits	-	647,342	647,342	621,060
42700	PERS Retirement	-	693,491	693,491	810,659
42701	PERS cost sharing	-	(104,399)	(104,399)	(109,140)
Salaries & Benefits Total		\$ -	\$ 3,903,826	\$ 3,979,801	\$ 4,086,792
Maintenance & Operation					
43090	Equipment usage	\$ -	\$ 92,720	\$ 92,720	\$ -
43110	Contractual services	-	1,601,814	1,601,814	1,528,000
43150	Cost allocation charge	-	476,594	476,594	478,539
44351	Fleet / equip rental charge	-	49,544	49,544	49,544
44352	ISD service charge	-	551,473	551,473	537,454
44353	Building Maint. Serv. Charge	-	341,227	341,227	339,219
44450	Postage	-	12,160	12,160	12,000
44550	Travel	-	10,070	10,070	10,000
44650	Training	-	4,560	4,560	11,600
44750	Liability Insurance	-	72,288	72,288	96,753
44800	Membership & dues	-	570	570	500
45150	Furniture & equipment	-	7,600	7,600	17,900
45250	Office supplies	-	15,200	15,200	12,000
45300	Small tools	-	2,280	2,280	2,000
45350	General supplies	-	3,040	3,040	3,000
46500	Uncollectible accounts	-	220,400	220,400	300,000
46900	Business meetings	-	1,140	1,140	1,000
47000	Miscellaneous	-	988	988	1,000
Maintenance & Operation Total		\$ -	\$ 3,463,668	\$ 3,463,668	\$ 3,400,509
TOTAL		\$ -	\$ 7,367,494	\$ 7,443,469	\$ 7,487,301

Notes:

* Effective FY 2017-18 Electric Works Revenue Fund (552) is under Fund number 582.

**CITY OF GLENDALE
 GLENDALE WATER & POWER DEPARTMENT
 ELECTRIC WORKS REVENUE FUND - GWP ADMINISTRATION - CONSERVATION & UTILITY MODERNIZATION *
 582-452**

		Actual 2016-17	Adopted 2017-18	Revised 2017-18	Adopted 2018-19
Salaries & Benefits					
41100	Salaries	\$ -	\$ 460,650	\$ 474,123	\$ 496,702
41200	Overtime	-	35,720	35,720	36,540
41300	Hourly wages	-	30,369	30,825	53,287
Various	Benefits	-	122,311	122,311	118,923
42700	PERS Retirement	-	129,960	129,960	146,687
42701	PERS cost sharing	-	(19,562)	(19,562)	(19,749)
Salaries & Benefits Total		\$ -	\$ 759,448	\$ 773,377	\$ 832,390
Maintenance & Operation					
43090	Equipment usage	\$ -	\$ 11,700	\$ 11,700	\$ -
43110	Contractual services	-	2,592,731	2,592,731	2,839,840
44100	Repairs to equipment	-	18,642	18,642	12,000
44200	Advertising	-	15,600	15,600	10,000
44450	Postage	-	117,000	117,000	100,000
44550	Travel	-	20,526	20,526	15,000
44650	Training	-	29,211	29,211	20,000
44700	Computer software	-	7,020	7,020	55,700
44750	Liability Insurance	-	14,275	14,275	20,492
44800	Membership & dues	-	2,340	2,340	2,000
45050	Periodicals & newspapers	-	1,950	1,950	-
45150	Furniture & equipment	-	110,682	110,682	100,000
45170	Computer hardware	-	20,280	20,280	20,000
45250	Office supplies	-	4,290	4,290	5,000
45350	General supplies	-	19,500	19,500	15,000
45450	Printing and graphics	-	15,600	15,600	15,000
46900	Business meetings	-	390	390	1,000
47000	Miscellaneous	-	18,408	18,408	20,000
Maintenance & Operation Total		\$ -	\$ 3,020,145	\$ 3,020,145	\$ 3,251,032
TOTAL		\$ -	\$ 3,779,593	\$ 3,793,522	\$ 4,083,422

Notes:

* Effective FY 2017-18 Electric Works Revenue Fund (552) is under Fund number 582.

**CITY OF GLENDALE
 GLENDALE WATER & POWER DEPARTMENT
 ELECTRIC WORKS REVENUE FUND - GWP ADM - UTILITY FINANCE *
 582-453**

		Actual 2016-17	Adopted 2017-18	Revised 2017-18	Adopted 2018-19
Salaries & Benefits					
41100	Salaries	\$ -	\$ 281,753	\$ 290,012	\$ 210,787
Various	Benefits	-	79,396	79,396	56,860
42700	PERS Retirement	-	74,495	74,495	62,276
42701	PERS cost sharing	-	(11,214)	(11,214)	(8,385)
Salaries & Benefits Total		\$ -	\$ 424,430	\$ 432,689	\$ 321,538
Maintenance & Operation					
44750	Liability Insurance	\$ -	\$ 7,636	\$ 7,636	\$ 7,378
Maintenance & Operation Total		\$ -	\$ 7,636	\$ 7,636	\$ 7,378
TOTAL		\$ -	\$ 432,066	\$ 440,325	\$ 328,916

Notes:

* Effective FY 2017-18 Electric Works Revenue Fund (552) is under Fund number 582.

**CITY OF GLENDALE
 GLENDALE WATER & POWER DEPARTMENT
 ELECTRIC WORKS REVENUE FUND - GWP ADM - ENVIRONMENTAL & SAFETY *
 582-454**

		Actual 2016-17	Adopted 2017-18	Revised 2017-18	Adopted 2018-19
Salaries & Benefits					
41100	Salaries	\$ -	\$ 343,948	\$ 353,991	\$ 374,101
41200	Overtime	-	3,800	3,800	4,060
Various	Benefits	-	65,896	65,896	62,018
42700	PERS Retirement	-	90,585	90,585	105,964
42701	PERS cost sharing	-	(13,637)	(13,637)	(14,268)
Salaries & Benefits Total		\$ -	\$ 490,592	\$ 500,635	\$ 531,875
Maintenance & Operation					
43110	Contractual services	\$ -	\$ 202,800	\$ 202,800	\$ 156,000
44550	Travel	-	7,800	7,800	7,000
44650	Training	-	54,600	54,600	50,000
44750	Liability Insurance	-	9,424	9,424	12,624
44800	Membership & dues	-	936	936	2,000
45050	Periodicals & newspapers	-	390	390	-
45100	Books	-	390	390	1,000
45350	General supplies	-	78,000	78,000	50,000
45400	Reports & publications	-	1,092	1,092	-
45450	Printing and graphics	-	3,120	3,120	-
46900	Business meetings	-	780	780	1,000
47000	Miscellaneous	-	54,600	54,600	50,000
Maintenance & Operation Total		\$ -	\$ 413,932	\$ 413,932	\$ 329,624
TOTAL		\$ -	\$ 904,524	\$ 914,567	\$ 861,499

Notes:

* Effective FY 2017-18 Electric Works Revenue Fund (552) is under Fund number 582.

**CITY OF GLENDALE
 GLENDALE WATER & POWER DEPARTMENT
 ELECTRIC WORKS REVENUE FUND - GWP ADM - UOC & WAREHOUSE *
 582-455**

		Actual 2016-17	Adopted 2017-18	Revised 2017-18	Adopted 2018-19
Salaries & Benefits					
41100	Salaries	\$ -	\$ 261,584	\$ 269,201	\$ 195,921
41200	Overtime	-	-	-	7,917
41300	Hourly wages	-	16,169	16,412	19,792
Various	Benefits	-	73,502	73,502	83,044
42700	PERS Retirement	-	73,245	73,245	63,740
42701	PERS cost sharing	-	(11,026)	(11,026)	(8,581)
Salaries & Benefits Total		\$ -	\$ 413,474	\$ 421,334	\$ 361,833
Maintenance & Operation					
43050	Repairs-bldgs & grounds	\$ -	\$ 109,200	\$ 109,200	\$ 100,000
43060	Utilities	-	53,235	53,235	53,235
43070	Lease payments	-	44,460	44,460	45,000
43090	Equipment usage	-	897	897	-
43110	Contractual services	-	230,100	230,100	286,000
44350	Vehicle maintenance	-	390	390	-
44400	Janitorial services	-	19,120	19,120	-
44450	Postage	-	390	390	-
44600	Laundry & towel service	-	22,230	22,230	20,000
44750	Liability Insurance	-	7,527	7,527	7,828
44760	Regulatory	-	1,262	1,262	-
44800	Membership & dues	-	585	585	-
45050	Periodicals & newspapers	-	390	390	-
45100	Books	-	390	390	-
45150	Furniture & equipment	-	1,950	1,950	2,000
45250	Office supplies	-	4,290	4,290	4,000
45300	Small tools	-	1,170	1,170	1,000
45350	General supplies	-	13,945	13,945	10,000
45450	Printing and graphics	-	780	780	-
46900	Business meetings	-	390	390	-
47000	Miscellaneous	-	31,980	31,980	25,000
47010	Discount earned & lost	-	156,000	156,000	150,000
Maintenance & Operation Total		\$ -	\$ 700,681	\$ 700,681	\$ 704,063
TOTAL		\$ -	\$ 1,114,155	\$ 1,122,015	\$ 1,065,896

Notes:

* Effective FY 2017-18 Electric Works Revenue Fund (552) is under Fund number 582.

**CITY OF GLENDALE
 GLENDALE WATER & POWER DEPARTMENT
 ELECTRIC WORKS REVENUE FUND - GWP YARD ADMINISTRATION *
 582-456**

		Actual 2016-17	Adopted 2017-18	Revised 2017-18	Adopted 2018-19
Salaries & Benefits					
41100	Salaries	\$ -	\$ 76,383	\$ 78,613	\$ 112,770
41300	Hourly wages	-	-	-	32,935
Various	Benefits	-	17,254	17,254	35,686
42700	PERS Retirement	-	20,110	20,110	43,289
42701	PERS cost sharing	-	(3,027)	(3,027)	(5,827)
Salaries & Benefits Total		\$ -	\$ 110,720	\$ 112,950	\$ 218,853
Maintenance & Operation					
44750	Liability Insurance	\$ -	\$ 2,070	\$ 2,070	\$ 5,099
Maintenance & Operation Total		\$ -	\$ 2,070	\$ 2,070	\$ 5,099
TOTAL		\$ -	\$ 112,790	\$ 115,020	\$ 223,952

Notes:

* Effective FY 2017-18 Electric Works Revenue Fund (552) is under Fund number 582.

**CITY OF GLENDALE
 GLENDALE WATER & POWER DEPARTMENT
 ELECTRIC WORKS REVENUE FUND - GWP ELECTRIC - ENGINEERING *
 582-460**

		Actual 2016-17	Adopted 2017-18	Revised 2017-18	Adopted 2018-19
Salaries & Benefits					
41100	Salaries	\$ -	\$ 2,195,743	\$ 2,255,530	\$ 2,179,195
41200	Overtime	-	50,000	50,000	140,000
41300	Hourly wages	-	143,808	145,965	130,973
Various	Benefits	-	471,359	471,359	444,266
42700	PERS Retirement	-	610,062	610,062	685,904
42701	PERS cost sharing	-	(90,288)	(90,288)	(90,719)
42799	Salary charges in (out)	-	(336,150)	(336,150)	(340,000)
Salaries & Benefits Total		\$ -	\$ 3,044,534	\$ 3,106,478	\$ 3,149,619
Maintenance & Operation					
43070	Lease payments	\$ -	\$ 6,000	\$ 6,000	\$ -
43090	Equipment usage	-	165,544	165,544	-
43110	Contractual services	-	1,325,300	1,325,300	1,375,300
44100	Repairs to equipment	-	3,000	3,000	-
44120	Repairs to office equip	-	2,000	2,000	-
44300	Telephone	-	3,000	3,000	-
44450	Postage	-	2,500	2,500	1,000
44550	Travel	-	50,000	50,000	-
44650	Training	-	152,550	152,550	-
44700	Computer software	-	2,000	2,000	-
44750	Liability Insurance	-	64,759	64,759	85,758
44760	Regulatory	-	35,504	35,504	-
44800	Membership & dues	-	63,500	63,500	130,000
45100	Books	-	10,000	10,000	-
45150	Furniture & equipment	-	7,500	7,500	7,500
45170	Computer hardware	-	12,000	12,000	-
45250	Office supplies	-	21,000	21,000	25,000
45300	Small tools	-	4,000	4,000	-
45350	General supplies	-	96,900	96,900	50,000
45400	Reports & publications	-	5,000	5,000	-
46900	Business meetings	-	5,500	5,500	5,000
47000	Miscellaneous	-	-	-	5,000
Maintenance & Operation Total		\$ -	\$ 2,037,557	\$ 2,037,557	\$ 1,684,558
TOTAL		\$ -	\$ 5,082,091	\$ 5,144,035	\$ 4,834,177

Notes:

* Effective FY 2017-18 Electric Works Revenue Fund (552) is under Fund number 582.

**CITY OF GLENDALE
 GLENDALE WATER & POWER DEPARTMENT
 ELECTRIC WORKS REVENUE FUND - GWP ELECTRIC - CUSTOMER SUPPORT *
 582-461**

		Actual 2016-17	Adopted 2017-18	Revised 2017-18	Adopted 2018-19
Salaries & Benefits					
41100	Salaries	\$ -	\$ 625,457	\$ 643,724	\$ 697,332
41200	Overtime	-	-	-	55,000
Various	Benefits	-	148,819	148,819	148,210
42700	PERS Retirement	-	164,762	164,762	207,179
42701	PERS cost sharing	-	(24,802)	(24,802)	(27,892)
42799	Salary charges in (out)	-	(90,586)	(90,586)	(95,000)
Salaries & Benefits Total		\$ -	\$ 823,650	\$ 841,917	\$ 984,829
Maintenance & Operation					
44750	Liability Insurance	\$ -	\$ 16,950	\$ 16,950	\$ 26,333
45350	General supplies	-	-	-	5,000
Maintenance & Operation Total		\$ -	\$ 16,950	\$ 16,950	\$ 31,333
TOTAL		\$ -	\$ 840,600	\$ 858,867	\$ 1,016,162

Notes:

* Effective FY 2017-18 Electric Works Revenue Fund (552) is under Fund number 582.

**CITY OF GLENDALE
 GLENDALE WATER & POWER DEPARTMENT
 ELECTRIC WORKS REVENUE FUND - GWP ELECTRIC - STREET LIGHT *
 582-462**

		Actual 2016-17	Adopted 2017-18	Revised 2017-18	Adopted 2018-19
Salaries & Benefits					
41100	Salaries	\$ -	\$ 242,231	\$ 242,231	\$ 251,153
41200	Overtime	-	50,000	50,000	75,000
Various	Benefits	-	79,927	79,927	70,991
42700	PERS Retirement	-	63,888	63,888	74,618
42701	PERS cost sharing	-	(7,213)	(7,213)	(7,535)
42799	Salary charges in (out)	-	(42,883)	(42,883)	(75,000)
Salaries & Benefits Total		\$ -	\$ 385,950	\$ 385,950	\$ 389,227
Maintenance & Operation					
43090	Equipment usage	\$ -	\$ 18,612	\$ 18,612	\$ -
43110	Contractual services	-	10,000	10,000	20,000
43111	Construction services	-	20,000	20,000	20,000
44750	Liability Insurance	-	7,919	7,919	11,415
45100	Books	-	100	100	-
45300	Small tools	-	10,000	10,000	10,000
45350	General supplies	-	71,200	71,200	102,000
46900	Business meetings	-	100	100	1,000
Maintenance & Operation Total		\$ -	\$ 137,931	\$ 137,931	\$ 164,415
TOTAL		\$ -	\$ 523,881	\$ 523,881	\$ 553,642

Notes:

* Effective FY 2017-18 Electric Works Revenue Fund (552) is under Fund number 582.

**CITY OF GLENDALE
 GLENDALE WATER & POWER DEPARTMENT
 ELECTRIC WORKS REVENUE FUND - GWP ELECTRIC - HOWARD SUBSTATION *
 582-463**

		Actual 2016-17	Adopted 2017-18	Revised 2017-18	Adopted 2018-19
Salaries & Benefits					
41100	Salaries	\$ -	\$ 1,188,560	\$ 1,191,310	\$ 1,292,577
41200	Overtime	-	265,000	265,000	460,000
41300	Hourly wages	-	45,050	45,726	44,394
Various	Benefits	-	345,623	345,623	327,465
42700	PERS Retirement	-	326,360	326,360	396,683
42701	PERS cost sharing	-	(38,232)	(38,232)	(42,620)
Salaries & Benefits Total		\$ -	\$ 2,132,361	\$ 2,135,787	\$ 2,478,499
Maintenance & Operation					
43050	Repairs-bldgs & grounds	\$ -	\$ 25,000	\$ 25,000	\$ 20,000
43060	Utilities	-	164,850	164,850	164,850
43090	Equipment usage	-	230	230	-
44300	Telephone	-	17,000	17,000	15,000
44400	Janitorial services	-	5,000	5,000	-
44550	Travel	-	-	-	5,000
44650	Training	-	17,000	17,000	15,000
44750	Liability Insurance	-	40,613	40,613	62,893
45150	Furniture & equipment	-	-	-	10,000
45170	Computer hardware	-	23,000	23,000	20,000
45250	Office supplies	-	2,000	2,000	2,000
45350	General supplies	-	40,000	40,000	25,000
46900	Business meetings	-	-	-	500
Maintenance & Operation Total		\$ -	\$ 334,693	\$ 334,693	\$ 340,243
TOTAL		\$ -	\$ 2,467,054	\$ 2,470,480	\$ 2,818,742

Notes:

* Effective FY 2017-18 Electric Works Revenue Fund (552) is under Fund number 582.

**CITY OF GLENDALE
 GLENDALE WATER & POWER DEPARTMENT
 ELECTRIC WORKS REVENUE FUND - GWP ELECTRIC - METER AND TEST SHOP *
 582-464**

		Actual 2016-17	Adopted 2017-18	Revised 2017-18	Adopted 2018-19
Salaries & Benefits					
41100	Salaries	\$ -	\$ 1,175,425	\$ 1,178,925	\$ 1,073,997
41200	Overtime	-	55,000	55,000	95,000
Various	Benefits	-	274,063	274,063	197,893
42700	PERS Retirement	-	299,183	299,183	319,088
42701	PERS cost sharing	-	(34,968)	(34,968)	(33,481)
42799	Salary charges in (out)	-	(182,395)	(182,395)	(198,000)
Salaries & Benefits Total		\$ -	\$ 1,586,308	\$ 1,589,808	\$ 1,454,497
Maintenance & Operation					
43090	Equipment usage	\$ -	\$ 17,280	\$ 17,280	\$ -
43110	Contractual services	-	18,000	18,000	18,000
44100	Repairs to equipment	-	4,000	4,000	4,000
44550	Travel	-	-	-	31,300
44750	Liability Insurance	-	34,843	34,843	40,916
45350	General supplies	-	5,000	5,000	15,000
Maintenance & Operation Total		\$ -	\$ 79,123	\$ 79,123	\$ 109,216
TOTAL		\$ -	\$ 1,665,431	\$ 1,668,931	\$ 1,563,713

Notes:

* Effective FY 2017-18 Electric Works Revenue Fund (552) is under Fund number 582.

**CITY OF GLENDALE
 GLENDALE WATER & POWER DEPARTMENT
 ELECTRIC WORKS REVENUE FUND - GWP ELECTRIC - STATION MAINTENANCE *
 582-465**

		Actual 2016-17	Adopted 2017-18	Revised 2017-18	Adopted 2018-19
Salaries & Benefits					
41100	Salaries	\$ -	\$ 2,016,864	\$ 2,024,705	\$ 2,023,665
41200	Overtime	-	150,000	150,000	170,000
Various	Benefits	-	542,373	542,373	446,932
42700	PERS Retirement	-	520,663	520,663	601,222
42701	PERS cost sharing	-	(61,531)	(61,531)	(63,613)
42799	Salary charges in (out)	-	(323,686)	(323,686)	(500,000)
Salaries & Benefits Total		\$ -	\$ 2,844,683	\$ 2,852,524	\$ 2,678,206
Maintenance & Operation					
43090	Equipment usage	\$ -	\$ 157,210	\$ 157,210	\$ -
43110	Contractual services	-	734,000	734,000	734,000
44100	Repairs to equipment	-	57,000	57,000	50,000
44400	Janitorial services	-	5,000	5,000	-
44450	Postage	-	500	500	-
44550	Travel	-	-	-	22,700
44650	Training	-	-	-	14,400
44750	Liability Insurance	-	60,575	60,575	76,775
45250	Office supplies	-	-	-	1,000
45350	General supplies	-	125,000	125,000	125,000
Maintenance & Operation Total		\$ -	\$ 1,139,285	\$ 1,139,285	\$ 1,023,875
TOTAL		\$ -	\$ 3,983,968	\$ 3,991,809	\$ 3,702,081

Notes:

* Effective FY 2017-18 Electric Works Revenue Fund (552) is under Fund number 582.

**CITY OF GLENDALE
 GLENDALE WATER & POWER DEPARTMENT
 ELECTRIC WORKS REVENUE FUND - GWP ELECTRIC - OVERHEAD & UNDERGROUND *
 582-466**

		Actual 2016-17	Adopted 2017-18	Revised 2017-18	Adopted 2018-19
Salaries & Benefits					
41100	Salaries	\$ -	\$ 3,713,267	\$ 3,733,330	\$ 3,593,082
41200	Overtime	-	550,000	550,000	865,000
41300	Hourly wages	-	176,272	178,916	224,589
Various	Benefits	-	997,267	997,267	726,698
42700	PERS Retirement	-	982,714	982,714	1,112,204
42701	PERS cost sharing	-	(119,852)	(119,852)	(121,244)
42799	Salary charges in (out)	-	(655,593)	(655,593)	(656,000)
Salaries & Benefits Total		\$ -	\$ 5,644,075	\$ 5,666,782	\$ 5,744,329
Maintenance & Operation					
43050	Repairs-bldgs & grounds	\$ -	\$ 20,000	\$ 20,000	\$ 20,000
43060	Utilities	-	18,900	18,900	18,900
43090	Equipment usage	-	491,124	491,124	-
43110	Contractual services	-	595,000	595,000	695,000
44100	Repairs to equipment	-	11,000	11,000	10,000
44120	Repairs to office equip	-	1,000	1,000	1,000
44450	Postage	-	1,000	1,000	1,000
44600	Laundry & towel service	-	1,000	1,000	1,000
44650	Training	-	-	-	10,000
44750	Liability Insurance	-	127,257	127,257	161,344
44760	Regulatory	-	8,000	8,000	-
44800	Membership & dues	-	13,000	13,000	10,000
45200	Maps & blue prints	-	100	100	-
45300	Small tools	-	61,000	61,000	60,000
45350	General supplies	-	401,400	401,400	500,000
47000	Miscellaneous	-	450	450	500
Maintenance & Operation Total		\$ -	\$ 1,750,231	\$ 1,750,231	\$ 1,488,744
TOTAL		\$ -	\$ 7,394,306	\$ 7,417,013	\$ 7,233,073

Notes:

* Effective FY 2017-18 Electric Works Revenue Fund (552) is under Fund number 582.

**CITY OF GLENDALE
 GLENDALE WATER & POWER DEPARTMENT
 ELECTRIC WORKS REVENUE FUND - GWP ELECTRIC - SUBSTRUCTURE *
 582-467**

		Actual 2016-17	Adopted 2017-18	Revised 2017-18	Adopted 2018-19
Salaries & Benefits					
41100	Salaries	\$ -	\$ 477,294	\$ 477,294	\$ 447,321
41200	Overtime	-	-	-	120,000
41300	Hourly wages	-	-	-	72,796
Various	Benefits	-	161,103	161,103	124,207
42700	PERS Retirement	-	126,188	126,188	132,901
42701	PERS cost sharing	-	(14,246)	(14,246)	(13,420)
42799	Salary charges in (out)	-	(75,034)	(75,034)	(85,000)
Salaries & Benefits Total		\$ -	\$ 675,305	\$ 675,305	\$ 798,805
Maintenance & Operation					
44750	Liability Insurance	\$ -	\$ 12,936	\$ 12,936	\$ 19,856
45300	Small tools	-	-	-	5,000
45350	General supplies	-	-	-	5,000
Maintenance & Operation Total		\$ -	\$ 12,936	\$ 12,936	\$ 29,856
TOTAL		\$ -	\$ 688,241	\$ 688,241	\$ 828,661

Notes:

* Effective FY 2017-18 Electric Works Revenue Fund (552) is under Fund number 582.

**CITY OF GLENDALE
 GLENDALE WATER & POWER DEPARTMENT
 ELECTRIC WORKS REVENUE FUND - GWP POWER MANAGEMENT *
 582-468**

		Actual 2016-17	Adopted 2017-18	Revised 2017-18	Adopted 2018-19
Salaries & Benefits					
41100	Salaries	\$ -	\$ 1,308,373	\$ 1,346,770	\$ 1,496,539
41300	Hourly wages	-	-	-	90,824
Various	Benefits	-	271,209	271,209	302,044
42700	PERS Retirement	-	346,320	346,320	471,608
42701	PERS cost sharing	-	(52,134)	(52,134)	(63,495)
42799	Salary charges in (out)	-	(35,005)	(35,005)	-
Salaries & Benefits Total		\$ -	\$ 1,838,763	\$ 1,877,160	\$ 2,297,520
Maintenance & Operation					
43110	Contractual services	\$ -	\$ 6,945,523	\$ 6,945,523	\$ 5,919,181
44250	Data communication	-	1,500	1,500	1,500
44300	Telephone	-	500	500	500
44450	Postage	-	1,400	1,400	1,000
44550	Travel	-	39,500	39,500	35,000
44650	Training	-	22,350	22,350	22,000
44700	Computer software	-	93,000	93,000	90,000
44750	Liability Insurance	-	35,457	35,457	55,559
44760	Regulatory	-	3,348,650	3,348,650	500,000
44800	Membership & dues	-	10,200	10,200	20,000
45050	Periodicals & newspapers	-	9,000	9,000	10,000
45100	Books	-	200	200	-
45150	Furniture & equipment	-	300	300	-
45250	Office supplies	-	400	400	-
45350	General supplies	-	700	700	500
45501	Fuel-landfill gas	-	2,472,865	2,472,865	2,473,000
45502	Fuel-natural gas	-	17,596,560	17,596,560	12,505,000
45510	Purchased power	-	106,996,854	106,996,854	100,000,000
45511	Hedging costs	-	800,000	800,000	800,000
46900	Business meetings	-	1,000	1,000	1,000
47000	Miscellaneous	-	500	500	500
Maintenance & Operation Total		\$ -	\$ 138,376,459	\$ 138,376,459	\$ 122,434,740
TOTAL		\$ -	\$ 140,215,222	\$ 140,253,619	\$ 124,732,260

Notes:

* Effective FY 2017-18 Electric Works Revenue Fund (552) is under Fund number 582.

CITY OF GLENDALE
GLENDALE WATER & POWER DEPARTMENT
ELECTRIC WORKS REVENUE FUND - GWP POWER PLANT *
582-469

		Actual 2016-17	Adopted 2017-18	Revised 2017-18	Adopted 2018-19
Salaries & Benefits					
41100	Salaries	\$ -	\$ 4,658,413	\$ 4,695,226	\$ 4,531,107
41200	Overtime	-	700,000	700,000	875,000
41300	Hourly wages	-	-	-	102,921
Various	Benefits	-	1,317,699	1,317,699	1,084,613
42700	PERS Retirement	-	1,230,432	1,230,432	1,376,769
42701	PERS cost sharing	-	(152,405)	(152,405)	(153,097)
Salaries & Benefits Total		\$ -	\$ 7,754,139	\$ 7,790,952	\$ 7,817,313
Maintenance & Operation					
43050	Repairs-bldgs & grounds	\$ -	\$ 130,000	\$ 130,000	\$ 75,000
43060	Utilities	-	1,959,300	1,959,300	1,959,300
43070	Lease payments	-	2,500	2,500	-
43090	Equipment usage	-	38,400	38,400	-
43110	Contractual services	-	1,550,000	1,550,000	1,550,000
44100	Repairs to equipment	-	408,000	408,000	300,000
44120	Repairs to office equip	-	1,000	1,000	-
44400	Janitorial services	-	30,000	30,000	-
44450	Postage	-	1,000	1,000	1,000
44550	Travel	-	10,000	10,000	10,000
44600	Laundry & towel service	-	20,000	20,000	20,000
44650	Training	-	26,000	26,000	26,000
44700	Computer software	-	5,000	5,000	5,000
44750	Liability Insurance	-	145,213	145,213	192,815
44760	Regulatory	-	377,500	377,500	300,000
45100	Books	-	500	500	-
45150	Furniture & equipment	-	5,000	5,000	5,000
45170	Computer hardware	-	5,000	5,000	5,000
45250	Office supplies	-	11,000	11,000	10,000
45300	Small tools	-	15,000	15,000	15,000
45350	General supplies	-	1,029,000	1,029,000	800,000
46900	Business meetings	-	500	500	2,000
47000	Miscellaneous	-	3,000	3,000	4,000
Maintenance & Operation Total		\$ -	\$ 5,772,913	\$ 5,772,913	\$ 5,280,115
TOTAL		\$ -	\$ 13,527,052	\$ 13,563,865	\$ 13,097,428

Notes:

* Effective FY 2017-18 Electric Works Revenue Fund (552) is under Fund number 582.

**CITY OF GLENDALE
 GLENDALE WATER & POWER DEPARTMENT
 ELECTRIC DEPRECIATION FUND - GWP ADMINISTRATION *
 553-911**

	Actual 2016-17	Adopted 2017-18	Revised 2017-18	Adopted 2018-19
Maintenance & Operation				
45623 General plant allocation	\$ 121,798	\$ -	\$ -	\$ -
Maintenance & Operation Total	\$ 121,798	\$ -	\$ -	\$ -
Capital Improvement				
59999 Asset capitalization	\$ (15,398,655)	\$ -	\$ -	\$ -
Capital Improvement Total	\$ (15,398,655)	\$ -	\$ -	\$ -
TOTAL	\$ (15,276,856)	\$ -	\$ -	\$ -

Notes:

* Effective FY 2017-18 Electric Depreciation Fund (553) is under Fund number 583.

**CITY OF GLENDALE
 GLENDALE WATER & POWER DEPARTMENT
 ELECTRIC DEPRECIATION FUND - POWER MANAGEMENT *
 553-921**

		Actual 2016-17	Adopted 2017-18	Revised 2017-18	Adopted 2018-19
Salaries & Benefits					
41100	Salaries	\$ 117,959	\$ -	\$ -	\$ -
41200	Overtime	25,771	-	-	-
Various	Benefits	14,585	-	-	-
42700	PERS Retirement	10,404	-	-	-
42701	PERS cost sharing	(1,787)	-	-	-
Salaries & Benefits Total		\$ 166,932	\$ -	\$ -	\$ -
Maintenance & Operation					
43110	Contractual services	\$ 6,015,649	\$ -	\$ -	\$ -
43111	Construction services	1,969,500	-	-	-
44100	Repairs to equipment	92,700	-	-	-
44750	Liability Insurance	3,890	-	-	-
44760	Regulatory	178,033	-	-	-
45503	Fuel - gasoline	15	-	-	-
45600	A & G overhead	89,136	-	-	-
45621	Employee benefit overhead	56,122	-	-	-
47000	Miscellaneous	20	-	-	-
47059	Capitalized interest-water	889,988	-	-	-
Maintenance & Operation Total		\$ 9,295,052	\$ -	\$ -	\$ -
Capital Improvement					
51250	Equipment	\$ 91,952	\$ -	\$ -	\$ -
Capital Improvement Total		\$ 91,952	\$ -	\$ -	\$ -
Capital Outlay					
51000	Capital outlay	\$ 179,126	\$ -	\$ -	\$ -
Capital Outlay Total		\$ 179,126	\$ -	\$ -	\$ -
TOTAL		\$ 9,733,063	\$ -	\$ -	\$ -

Notes:

* Effective FY 2017-18 Electric Depreciation Fund (553) is under Fund number 583.

**CITY OF GLENDALE
 GLENDALE WATER & POWER DEPARTMENT
 ELECTRIC DEPRECIATION FUND - ELECTRIC SERVICES*
 553-931**

		Actual 2016-17	Adopted 2017-18	Revised 2017-18	Adopted 2018-19
Salaries & Benefits					
41100	Salaries	\$ 498,241	\$ -	\$ -	\$ -
41200	Overtime	194,019	-	-	-
41300	Hourly wages	3,977	-	-	-
Various	Benefits	71,676	-	-	-
42700	PERS Retirement	33,613	-	-	-
42701	PERS cost sharing	(4,600)	-	-	-
Salaries & Benefits Total		\$ 796,927	\$ -	\$ -	\$ -
Maintenance & Operation					
43060	Utilities	\$ 2,126	\$ -	\$ -	\$ -
43090	Equipment usage	66,493	-	-	-
43110	Contractual services	1,397,662	-	-	-
43111	Construction services	116,563	-	-	-
44100	Repairs to equipment	7,087	-	-	-
44750	Liability Insurance	18,859	-	-	-
44760	Regulatory	8,300	-	-	-
45350	General supplies	1,326,239	-	-	-
45512	Public benefit programs	1,400	-	-	-
45600	A & G overhead	377,763	-	-	-
45621	Employee benefit overhead	236,283	-	-	-
47000	Miscellaneous	357	-	-	-
47059	Capitalized interest-water	936,757	-	-	-
Maintenance & Operation Total		\$ 4,495,889	\$ -	\$ -	\$ -
Capital Improvement					
51250	Equipment	\$ 8,146	\$ -	\$ -	\$ -
Capital Improvement Total		\$ 8,146	\$ -	\$ -	\$ -
Capital Outlay					
51000	Capital outlay	\$ 242,832	\$ -	\$ -	\$ -
Capital Outlay Total		\$ 242,832	\$ -	\$ -	\$ -
TOTAL		\$ 5,543,794	\$ -	\$ -	\$ -

Notes:

* Effective FY 2017-18 Electric Depreciation Fund (553) is under Fund number 583.

**CITY OF GLENDALE
 GLENDALE WATER & POWER DEPARTMENT
 ELECTRIC DEPRECIATION FUND - GWP PROJECTS *
 583-490**

		Actual 2016-17	Adopted 2017-18	Revised 2017-18	Adopted 2018-19
Maintenance & Operation					
43110	Contractual services	\$ -	\$ -	\$ 260,500	\$ 500,000
45350	General supplies	-	-	-	1,500,000
47055	Capitalized interest - elec	-	2,886,000	2,886,000	-
Maintenance & Operation Total		\$ -	\$ 2,886,000	\$ 3,146,500	\$ 2,000,000
Capital Improvement					
51200	Other improvements	\$ -	\$ 1,499,000	\$ 1,499,000	\$ 6,942,000
51250	Equipment	-	-	479,012	-
51800	Mobile equipment	-	1,087,200	1,087,200	-
Capital Improvement Total		\$ -	\$ 2,586,200	\$ 3,065,212	\$ 6,942,000
Capital Outlay					
51000	Capital outlay	\$ -	\$ 1,013,120	\$ 1,013,120	\$ 3,841,938
Capital Outlay Total		\$ -	\$ 1,013,120	\$ 1,013,120	\$ 3,841,938
TOTAL		\$ -	\$ 6,485,320	\$ 7,224,832	\$ 12,783,938

Notes:

* Effective FY 2017-18 Electric Depreciation Fund (553) is under Fund number 583.

**CITY OF GLENDALE
 GLENDALE WATER & POWER DEPARTMENT
 ELECTRIC CUSTOMER PAID CAPITAL FUND - ELECTRIC SERVICES
 555-931**

		Actual 2016-17	Adopted 2017-18	Revised 2017-18	Adopted 2018-19
Salaries & Benefits					
41100	Salaries	\$ 425,393	\$ -	\$ -	\$ -
41200	Overtime	184,175	-	-	-
41300	Hourly wages	1,411	-	-	-
Various	Benefits	50,588	-	-	-
42700	PERS Retirement	8,884	-	-	-
42701	PERS cost sharing	(1,310)	-	-	-
Salaries & Benefits Total		\$ 669,141	\$ -	\$ -	\$ -
Maintenance & Operation					
43090	Equipment usage	\$ 93,686	\$ -	\$ -	\$ -
43110	Contractual services	18,602	-	-	-
43111	Construction services	5,456	-	-	-
44750	Liability Insurance	16,554	-	-	-
44760	Regulatory	1,800	-	-	-
45300	Small tools	411	-	-	-
45350	General supplies	383,533	-	-	-
45600	A & G overhead	340,116	-	-	-
45621	Employee benefit overhead	(0)	-	-	-
Maintenance & Operation Total		\$ 860,157	\$ -	\$ -	\$ -
Capital Improvement					
59999	Asset capitalization	\$ (1,529,298)	\$ -	\$ -	\$ -
Capital Improvement Total		\$ (1,529,298)	\$ -	\$ -	\$ -
TOTAL		\$ -	\$ -	\$ -	\$ -

Notes:

* Effective FY 2017-18 Electric Customer Paid Capital Fund (555) is under Fund number 585.

**CITY OF GLENDALE
 GLENDALE WATER & POWER DEPARTMENT
 ELECTRIC CUSTOMER CAPITAL FUND - GWP PROJECTS
 585-490**

		Actual 2016-17	Adopted 2017-18	Revised 2017-18	Adopted 2018-19
Salaries & Benefits					
41100	Salaries	\$ -	\$ -	\$ 350,000	\$ -
Salaries & Benefits Total		\$ -	\$ -	\$ 350,000	\$ -
Maintenance & Operation					
45350	General supplies	\$ -	\$ -	\$ 350,000	\$ -
Maintenance & Operation Total		\$ -	\$ -	\$ 350,000	\$ -
Capital Improvement					
51200	Other improvements	\$ -	\$ 1,819,781	\$ 1,119,781	\$ 2,000,000
Capital Improvement Total		\$ -	\$ 1,819,781	\$ 1,119,781	\$ 2,000,000
TOTAL		\$ -	\$ 1,819,781	\$ 1,819,781	\$ 2,000,000

Notes:

* Effective FY 2017-18 Electric Customer Paid Capital Fund (555) is under Fund number 585.

**CITY OF GLENDALE
 GLENDALE WATER & POWER DEPARTMENT
 ENERGY COST ADJUSTMENT CHARGE FUND - POWER MANAGEMENT *
 556-921**

	Actual 2016-17	Adopted 2017-18	Revised 2017-18	Adopted 2018-19
Maintenance & Operation				
45509 ECAC variance	\$ 9,567,665	\$ -	\$ -	\$ -
Maintenance & Operation Total	\$ 9,567,665	\$ -	\$ -	\$ -
TOTAL	\$ 9,567,665	\$ -	\$ -	\$ -

Notes:

* Effective FY 2017-18 Energy Cost Adjustment Charge Fund (556) is under Fund number 586.

**CITY OF GLENDALE
 GLENDALE WATER & POWER DEPARTMENT
 REGULATORY ADJUSTMENT CHARGE FUND - POWER MANAGEMENT*
 557-921**

	Actual 2016-17	Adopted 2017-18	Revised 2017-18	Adopted 2018-19
Maintenance & Operation				
44761 RAC variance	\$ 11,186,300	\$ -	\$ -	\$ -
Maintenance & Operation Total	\$ 11,186,300	\$ -	\$ -	\$ -
TOTAL	\$ 11,186,300	\$ -	\$ -	\$ -

Notes:

* Effective FY 2017-18 Regulatory Adjustment Charge Fund (557) is under Fund number 587.

CITY OF GLENDALE
GLENDALE WATER & POWER DEPARTMENT
ELECTRIC-SCAQMD STATE SALES - GWP ADMINISTRATION
584-450

		Actual 2016-17	Adopted 2017-18	Revised 2017-18	Adopted 2018-19
Transfers					
48060	Transfer-Misc Enterprise	\$ -	\$ -	\$ 479,012	\$ -
Transfers Total		\$ -	\$ -	\$ 479,012	\$ -
TOTAL		\$ -	\$ -	\$ 479,012	\$ -

Notes:

* Effective FY 2017-18 Electric SCAQMD State Sales Fund (554) is under Fund number 584.

CITY OF GLENDALE
GLENDALE WATER & POWER DEPARTMENT
ELECTRIC CUSTOMER REPAIR FUND - GWP PROJECTS
588-490

	Actual 2016-17	Adopted 2017-18	Revised 2017-18	Adopted 2018-19
Maintenance & Operation				
45350 General supplies	\$ -	\$ -	\$ -	\$ 50,000
Maintenance & Operation Total	\$ -	\$ -	\$ -	\$ 50,000
TOTAL	\$ -	\$ -	\$ -	\$ 50,000

**CITY OF GLENDALE
 GLENDALE WATER & POWER DEPARTMENT
 WATER WORKS REVENUE FUND - GWP ADMINISTRATION *
 572-911**

		Actual 2016-17	Adopted 2017-18	Revised 2017-18	Adopted 2018-19
Maintenance & Operation					
43110	Contractual services	\$ 9,597	\$ -	\$ -	\$ -
46000	Depreciation	6,410,558	-	-	-
47050	Interest on bonds	2,791,771	-	-	-
Maintenance & Operation Total		\$ 9,211,926	\$ -	\$ -	\$ -
TOTAL		\$ 9,211,926	\$ -	\$ -	\$ -

Notes:

* Effective FY 2017-18 Water Works Revenue Fund (572) is under Fund number 592.

**CITY OF GLENDALE
 GLENDALE WATER & POWER DEPARTMENT
 WATER WORKS REVENUE FUND - WATER SERVICES *
 572-951**

		Actual 2016-17	Adopted 2017-18	Revised 2017-18	Adopted 2018-19
Salaries & Benefits					
41100	Salaries	\$ 4,097,770	\$ -	\$ -	\$ -
41200	Overtime	280,647	-	-	-
41300	Hourly wages	95,114	-	-	-
Various	Benefits	1,379,127	-	-	-
42601	PARS supplemental retirement	108,577	-	-	-
42700	PERS Retirement	692,483	-	-	-
42701	PERS cost sharing	(137,607)	-	-	-
Salaries & Benefits Total		\$ 6,516,111	\$ -	\$ -	\$ -
Maintenance & Operation					
43050	Repairs-bldgs & grounds	\$ 74,742	\$ -	\$ -	\$ -
43060	Utilities	3,076,438	-	-	-
43090	Equipment usage	385,872	-	-	-
43110	Contractual services	896,813	-	-	-
43111	Construction services	110,171	-	-	-
44100	Repairs to equipment	33,302	-	-	-
44200	Advertising	400	-	-	-
44450	Postage	356	-	-	-
44550	Travel	3,305	-	-	-
44600	Laundry & towel service	7,463	-	-	-
44650	Training	26,216	-	-	-
44700	Computer software	80,397	-	-	-
44750	Liability Insurance	121,167	-	-	-
44760	Regulatory	198,781	-	-	-
44800	Membership & dues	53,832	-	-	-
45100	Books	2,082	-	-	-
45170	Computer hardware	309	-	-	-
45250	Office supplies	10,147	-	-	-
45300	Small tools	15,214	-	-	-
45350	General supplies	377,828	-	-	-
45520	Purchased water	14,759,806	-	-	-
45600	A & G overhead	6,038,072	-	-	-
45621	Employee benefit overhead	(146,657)	-	-	-
46900	Business meetings	292	-	-	-
47000	Miscellaneous	814	-	-	-
Maintenance & Operation Total		\$ 26,127,161	\$ -	\$ -	\$ -
TOTAL		\$ 32,643,273	\$ -	\$ -	\$ -

Notes:

* Effective FY 2017-18 Water Works Revenue Fund (572) is under Fund number 592.

CITY OF GLENDALE
GLENDALE WATER & POWER DEPARTMENT
WATER WORKS REVENUE FUND - CUSTOMER SERVICES *
572-971

	Actual 2016-17	Adopted 2017-18	Revised 2017-18	Adopted 2018-19
Maintenance & Operation				
45610 Section overhead	\$ 41,292	\$ -	\$ -	\$ -
45622 Customer services allocation	1,416,357	-	-	-
Maintenance & Operation Total	\$ 1,457,649	\$ -	\$ -	\$ -
TOTAL	\$ 1,457,649	\$ -	\$ -	\$ -

Notes:

* Effective FY 2017-18 Water Works Revenue Fund (572) is under Fund number 592.

**CITY OF GLENDALE
 GLENDALE WATER & POWER DEPARTMENT
 WATER WORKS REVENUE FUND - GWP ADMINISTRATION - CONSERVATION & MODERNIZATION *
 592-450**

		Actual 2016-17	Adopted 2017-18	Revised 2017-18	Adopted 2018-19
Salaries & Benefits					
41100	Salaries	\$ -	\$ 196,479	\$ 199,631	\$ 234,515
41200	Overtime	-	440	440	2,233
41300	Hourly wages	-	13,061	13,257	10,218
Various	Benefits	-	50,116	50,116	51,145
42700	PERS Retirement	-	55,299	55,299	69,811
42701	PERS cost sharing	-	(8,325)	(8,325)	(9,399)
Salaries & Benefits Total		\$ -	\$ 307,070	\$ 310,418	\$ 358,523
Maintenance & Operation					
43060	Utilities	\$ -	\$ 16,170	\$ 16,170	\$ 16,170
43110	Contractual services	-	159,500	159,500	159,500
43150	Cost allocation charge	-	3,612,593	3,612,593	4,516,935
44120	Repairs to office equip	-	440	440	400
44351	Fleet / equip rental charge	-	471,601	471,601	471,601
44352	ISD service charge	-	803,191	803,191	816,789
44353	Building Maint. Serv. Charge	-	497,089	497,089	515,525
44450	Postage	-	220	220	200
44550	Travel	-	4,400	4,400	4,400
44650	Training	-	1,100	1,100	1,100
44750	Liability Insurance	-	5,690	5,690	8,324
44751	Insurance/surety bond premium	-	115,500	115,500	117,810
44760	Regulatory	-	4,400	4,400	4,400
44800	Membership & dues	-	352	352	500
45050	Periodicals & newspapers	-	440	440	440
45250	Office supplies	-	11,110	11,110	11,000
45350	General supplies	-	22,000	22,000	15,000
45450	Printing and graphics	-	5,500	5,500	5,500
46000	Depreciation	-	6,560,000	6,560,000	6,870,000
46900	Business meetings	-	1,540	1,540	1,500
47000	Miscellaneous	-	6,820	6,820	6,800
47050	Interest on bonds	-	2,372,040	2,372,040	2,373,000
Maintenance & Operation Total		\$ -	\$ 14,671,696	\$ 14,671,696	\$ 15,916,894
TOTAL		\$ -	\$ 14,978,766	\$ 14,982,114	\$ 16,275,417

Notes:

* Effective FY 2017-18 Water Works Revenue Fund (572) is under Fund number 592.

**CITY OF GLENDALE
 GLENDALE WATER & POWER DEPARTMENT
 WATER WORKS REVENUE FUND - GWP ADMINISTRATION - CUSTOMER SERVICES *
 592-451**

		Actual 2016-17	Adopted 2017-18	Revised 2017-18	Adopted 2018-19
Salaries & Benefits					
41100	Salaries	\$ -	\$ 824,151	\$ 837,276	\$ 853,597
41200	Overtime	-	9,720	9,720	10,150
41300	Hourly wages	-	5,241	5,320	6,090
Various	Benefits	-	203,603	203,603	195,444
42700	PERS Retirement	-	218,144	218,144	255,031
42701	PERS cost sharing	-	(32,840)	(32,840)	(34,336)
Salaries & Benefits Total		\$ -	\$ 1,228,019	\$ 1,241,223	\$ 1,285,976
Maintenance & Operation					
43090	Equipment usage	\$ -	\$ 29,280	\$ 29,280	\$ -
43110	Contractual services	-	505,836	505,836	482,000
43150	Cost allocation charge	-	150,503	150,503	151,118
44351	Fleet / equip rental charge	-	15,645	15,645	15,645
44352	ISD service charge	-	174,150	174,150	169,722
44353	Building Maint. Serv. Charge	-	107,756	107,756	107,122
44450	Postage	-	3,840	3,840	4,000
44550	Travel	-	3,180	3,180	3,200
44650	Training	-	1,440	1,440	1,500
44750	Liability Insurance	-	22,743	22,743	30,452
44800	Membership & dues	-	180	180	200
45150	Furniture & equipment	-	2,400	2,400	5,700
45250	Office supplies	-	4,800	4,800	4,800
45300	Small tools	-	720	720	700
45350	General supplies	-	960	960	1,000
46500	Uncollectible accounts	-	69,600	69,600	70,000
46900	Business meetings	-	360	360	500
47000	Miscellaneous	-	312	312	300
Maintenance & Operation Total		\$ -	\$ 1,093,705	\$ 1,093,705	\$ 1,047,959
TOTAL		\$ -	\$ 2,321,724	\$ 2,334,928	\$ 2,333,935

Notes:

* Effective FY 2017-18 Water Works Revenue Fund (572) is under Fund number 592.

**CITY OF GLENDALE
 GLENDALE WATER & POWER DEPARTMENT
 WATER WORKS REVENUE FUND - GWP ADMINISTRATION - CONSERVATION & MODERNIZATION *
 592-452**

		Actual 2016-17	Adopted 2017-18	Revised 2017-18	Adopted 2018-19
Salaries & Benefits					
41100	Salaries	\$ -	\$ 126,346	\$ 128,382	\$ 136,617
41200	Overtime	-	11,280	11,280	11,165
41300	Hourly wages	-	8,565	8,693	-
Various	Benefits	-	33,635	33,635	31,778
42700	PERS Retirement	-	35,711	35,711	40,345
42701	PERS cost sharing	-	(5,378)	(5,378)	(5,433)
Salaries & Benefits Total		\$ -	\$ 210,159	\$ 212,323	\$ 214,472
Maintenance & Operation					
43090	Equipment usage	\$ -	\$ 3,300	\$ 3,300	\$ -
43110	Contractual services	-	731,282	731,282	927,160
44100	Repairs to equipment	-	5,258	5,258	5,300
44200	Advertising	-	4,400	4,400	4,400
44450	Postage	-	33,000	33,000	33,000
44550	Travel	-	5,789	5,789	5,800
44650	Training	-	8,239	8,239	8,200
44700	Computer software	-	1,980	1,980	15,700
44750	Liability Insurance	-	3,964	3,964	5,162
44800	Membership & dues	-	660	660	700
45050	Periodicals & newspapers	-	550	550	600
45150	Furniture & equipment	-	31,218	31,218	31,200
45170	Computer hardware	-	5,720	5,720	5,700
45250	Office supplies	-	1,210	1,210	1,200
45350	General supplies	-	5,500	5,500	5,500
45450	Printing and graphics	-	4,400	4,400	4,400
46900	Business meetings	-	110	110	200
47000	Miscellaneous	-	5,192	5,192	5,200
Maintenance & Operation Total		\$ -	\$ 851,772	\$ 851,772	\$ 1,059,422
TOTAL		\$ -	\$ 1,061,931	\$ 1,064,095	\$ 1,273,894

Notes:

* Effective FY 2017-18 Water Works Revenue Fund (572) is under Fund number 592.

**CITY OF GLENDALE
 GLENDALE WATER & POWER DEPARTMENT
 WATER WORKS REVENUE FUND - GWP ADM - UTILITY FINANCE *
 592-453**

		Actual 2016-17	Adopted 2017-18	Revised 2017-18	Adopted 2018-19
Salaries & Benefits					
41100	Salaries	\$ -	\$ 79,469	\$ 80,753	\$ 59,453
Various	Benefits	-	22,390	22,390	16,039
42700	PERS Retirement	-	21,011	21,011	17,567
42701	PERS cost sharing	-	(3,164)	(3,164)	(2,365)
Salaries & Benefits Total		\$ -	\$ 119,706	\$ 120,990	\$ 90,694
Maintenance & Operation					
44750	Liability Insurance	\$ -	\$ 2,155	\$ 2,155	\$ 2,082
Maintenance & Operation Total		\$ -	\$ 2,155	\$ 2,155	\$ 2,082
TOTAL		\$ -	\$ 121,861	\$ 123,145	\$ 92,776

Notes:

* Effective FY 2017-18 Water Works Revenue Fund (572) is under Fund number 592.

**CITY OF GLENDALE
 GLENDALE WATER & POWER DEPARTMENT
 WATER WORKS REVENUE FUND - GWP ADM - ENVIRONMENTAL & SAFETY *
 592-454**

		Actual 2016-17	Adopted 2017-18	Revised 2017-18	Adopted 2018-19
Salaries & Benefits					
41100	Salaries	\$ -	\$ 97,011	\$ 98,572	\$ 105,515
41200	Overtime	-	1,200	1,200	1,218
Various	Benefits	-	18,589	18,589	17,495
42700	PERS Retirement	-	25,550	25,550	29,888
42701	PERS cost sharing	-	(3,846)	(3,846)	(4,024)
Salaries & Benefits Total		\$ -	\$ 138,504	\$ 140,065	\$ 150,092
Maintenance & Operation					
43110	Contractual services	\$ -	\$ 57,200	\$ 57,200	\$ 44,000
44550	Travel	-	2,200	2,200	2,200
44650	Training	-	15,400	15,400	15,000
44750	Liability Insurance	-	2,662	2,662	3,564
44800	Membership & dues	-	264	264	300
45050	Periodicals & newspapers	-	110	110	100
45100	Books	-	110	110	100
45150	Furniture & equipment	-	-	-	500
45350	General supplies	-	22,000	22,000	20,000
45400	Reports & publications	-	308	308	300
45450	Printing and graphics	-	880	880	500
46900	Business meetings	-	220	220	200
47000	Miscellaneous	-	15,400	15,400	15,400
Maintenance & Operation Total		\$ -	\$ 116,754	\$ 116,754	\$ 102,164
TOTAL		\$ -	\$ 255,258	\$ 256,819	\$ 252,256

Notes:

* Effective FY 2017-18 Water Works Revenue Fund (572) is under Fund number 592.

**CITY OF GLENDALE
 GLENDALE WATER & POWER DEPARTMENT
 WATER WORKS REVENUE FUND - GWP ADM - UOC & WAREHOUSE *
 592-455**

		Actual 2016-17	Adopted 2017-18	Revised 2017-18	Adopted 2018-19
Salaries & Benefits					
41100	Salaries	\$ -	\$ 73,780	\$ 74,964	\$ 55,261
41200	Overtime	-	-	-	2,233
41300	Hourly wages	-	4,561	4,629	5,582
Various	Benefits	-	20,710	20,710	23,468
42700	PERS Retirement	-	20,659	20,659	17,976
42701	PERS cost sharing	-	(3,109)	(3,109)	(2,421)
Salaries & Benefits Total		\$ -	\$ 116,601	\$ 117,853	\$ 102,099
Maintenance & Operation					
43050	Repairs-bldgs & grounds	\$ -	\$ 30,800	\$ 30,800	\$ 30,000
43060	Utilities	-	15,015	15,015	15,015
43070	Lease payments	-	12,540	12,540	12,500
43090	Equipment usage	-	253	253	-
43110	Contractual services	-	64,900	64,900	110,000
44350	Vehicle maintenance	-	110	110	-
44400	Janitorial services	-	5,394	5,394	-
44450	Postage	-	110	110	-
44600	Laundry & towel service	-	6,270	6,270	6,300
44750	Liability Insurance	-	2,123	2,123	2,207
44760	Regulatory	-	356	356	-
44800	Membership & dues	-	165	165	-
45050	Periodicals & newspapers	-	110	110	-
45100	Books	-	110	110	-
45150	Furniture & equipment	-	550	550	1,000
45250	Office supplies	-	1,210	1,210	1,200
45300	Small tools	-	330	330	300
45350	General supplies	-	3,932	3,932	4,000
45450	Printing and graphics	-	220	220	-
46900	Business meetings	-	110	110	500
47000	Miscellaneous	-	9,020	9,020	9,000
47010	Discount earned & lost	-	44,000	44,000	44,000
Maintenance & Operation Total		\$ -	\$ 197,628	\$ 197,628	\$ 236,022
TOTAL		\$ -	\$ 314,229	\$ 315,481	\$ 338,121

Notes:

* Effective FY 2017-18 Water Works Revenue Fund (572) is under Fund number 592.

**CITY OF GLENDALE
 GLENDALE WATER & POWER DEPARTMENT
 WATER WORKS REVENUE FUND - GWP YARD ADMINISTRATION *
 592-456**

		Actual 2016-17	Adopted 2017-18	Revised 2017-18	Adopted 2018-19
Salaries & Benefits					
41100	Salaries	\$ -	\$ 21,543	\$ 21,890	\$ 31,807
41300	Hourly wages	-	-	-	9,289
Various	Benefits	-	4,864	4,864	10,111
42700	PERS Retirement	-	5,672	5,672	12,210
42701	PERS cost sharing	-	(854)	(854)	(1,644)
Salaries & Benefits Total		\$ -	\$ 31,225	\$ 31,572	\$ 61,773
Maintenance & Operation					
44750	Liability Insurance	\$ -	\$ 584	\$ 584	\$ 1,439
Maintenance & Operation Total		\$ -	\$ 584	\$ 584	\$ 1,439
TOTAL		\$ -	\$ 31,809	\$ 32,156	\$ 63,212

Notes:

* Effective FY 2017-18 Water Works Revenue Fund (572) is under Fund number 592.

**CITY OF GLENDALE
GLENDALE WATER & POWER DEPARTMENT
WATER WORKS REVENUE FUND - GWP WATER - ENGINEERING *
592-470**

		Actual 2016-17	Adopted 2017-18	Revised 2017-18	Adopted 2018-19
Salaries & Benefits					
41100	Salaries	\$ -	\$ 1,422,573	\$ 1,445,078	\$ 1,564,625
41200	Overtime	-	15,750	15,750	15,000
41300	Hourly wages	-	101,973	103,503	89,525
Various	Benefits	-	312,686	312,686	341,459
42700	PERS Retirement	-	388,005	388,005	491,451
42701	PERS cost sharing	-	(58,408)	(58,408)	(66,168)
42799	Salary charges in (out)	-	(218,258)	(218,258)	(220,000)
Salaries & Benefits Total		\$ -	\$ 1,964,321	\$ 1,988,356	\$ 2,215,892
Maintenance & Operation					
43060	Utilities	\$ -	\$ 3,567,119	\$ -	\$ -
43090	Equipment usage	-	500	500	-
43110	Contractual services	-	955,485	955,485	864,000
44550	Travel	-	3,990	3,990	4,000
44650	Training	-	3,910	3,910	4,000
44700	Computer software	-	4,500	4,500	34,500
44750	Liability Insurance	-	41,741	41,741	58,422
44760	Regulatory	-	500	500	125,700
44800	Membership & dues	-	900	900	70,400
45100	Books	-	300	300	300
45170	Computer hardware	-	3,000	3,000	3,000
45250	Office supplies	-	1,150	1,150	1,200
45350	General supplies	-	150	150	200
45520	Purchased water	-	-	18,756,145	18,756,200
46900	Business meetings	-	500	500	500
47000	Miscellaneous	-	100	100	100
Maintenance & Operation Total		\$ -	\$ 4,583,845	\$ 19,772,871	\$ 19,922,522
TOTAL		\$ -	\$ 6,548,166	\$ 21,761,227	\$ 22,138,414

Notes:

* Effective FY 2017-18 Water Works Revenue Fund (572) is under Fund number 592.

**CITY OF GLENDALE
 GLENDALE WATER & POWER DEPARTMENT
 WATER WORKS REVENUE FUND - GWP WATER DISTRIBUTION *
 592-471**

		Actual 2016-17	Adopted 2017-18	Revised 2017-18	Adopted 2018-19
Salaries & Benefits					
41100	Salaries	\$ -	\$ 1,900,914	\$ 1,911,015	\$ 1,990,088
41200	Overtime	-	61,555	61,555	70,000
41300	Hourly wages	-	-	-	59,187
Various	Benefits	-	693,036	693,036	734,554
42700	PERS Retirement	-	495,226	495,226	608,261
42701	PERS cost sharing	-	(62,609)	(62,609)	(69,253)
42799	Salary charges in (out)	-	(308,292)	(308,292)	(310,000)
Salaries & Benefits Total		\$ -	\$ 2,779,830	\$ 2,789,931	\$ 3,082,837
Maintenance & Operation					
43050	Repairs-bldgs & grounds	\$ -	\$ 2,500	\$ 2,500	\$ 2,500
43060	Utilities	-	111,300	111,300	111,300
43090	Equipment usage	-	111,500	111,500	-
43111	Construction services	-	180,000	180,000	180,000
44100	Repairs to equipment	-	11,500	11,500	12,000
44250	Data communication	-	4,300	4,300	-
44450	Postage	-	200	200	-
44600	Laundry & towel service	-	-	-	6,000
44750	Liability Insurance	-	53,184	53,184	74,173
44760	Regulatory	-	40,650	40,650	40,000
45250	Office supplies	-	50	50	200
45300	Small tools	-	22,000	22,000	20,000
45350	General supplies	-	255,000	255,000	305,000
47000	Miscellaneous	-	1,000	1,000	1,000
Maintenance & Operation Total		\$ -	\$ 793,184	\$ 793,184	\$ 752,173
TOTAL		\$ -	\$ 3,573,014	\$ 3,583,115	\$ 3,835,010

Notes:

* Effective FY 2017-18 Water Works Revenue Fund (572) is under Fund number 592.

**CITY OF GLENDALE
 GLENDALE WATER & POWER DEPARTMENT
 WATER WORKS REVENUE FUND - GWP WATER OPERATION *
 592-472**

		Actual 2016-17	Adopted 2017-18	Revised 2017-18	Adopted 2018-19
Salaries & Benefits					
41100	Salaries	\$ -	\$ 1,015,251	\$ 1,022,211	\$ 1,046,094
41200	Overtime	-	232,695	232,695	200,000
41300	Hourly wages	-	24,939	25,313	28,483
Various	Benefits	-	316,107	316,107	352,913
42700	PERS Retirement	-	266,115	266,115	318,809
42701	PERS cost sharing	-	(34,933)	(34,933)	(37,680)
Salaries & Benefits Total		\$ -	\$ 1,820,174	\$ 1,827,508	\$ 1,908,619
Maintenance & Operation					
43050	Repairs-bldgs & grounds	\$ -	\$ 76,554	\$ 76,554	\$ 76,000
43060	Utilities	-	16,065	3,583,184	3,583,184
43090	Equipment usage	-	268,800	268,800	-
43110	Contractual services	-	705,000	705,000	557,000
44100	Repairs to equipment	-	95,500	95,500	95,000
44120	Repairs to office equip	-	2,000	2,000	2,000
44450	Postage	-	30	30	-
44550	Travel	-	7,660	7,660	7,700
44600	Laundry & towel service	-	10,000	10,000	10,000
44650	Training	-	32,800	32,800	32,800
44700	Computer software	-	62,500	62,500	-
44750	Liability Insurance	-	34,495	34,495	44,609
44760	Regulatory	-	150,200	150,200	25,000
44800	Membership & dues	-	72,500	72,500	3,000
45100	Books	-	500	500	-
45150	Furniture & equipment	-	500	500	1,000
45170	Computer hardware	-	2,000	2,000	2,000
45250	Office supplies	-	3,000	3,000	5,000
45300	Small tools	-	500	500	500
45350	General supplies	-	181,500	181,500	180,000
45400	Reports & publications	-	700	700	-
45450	Printing and graphics	-	30,200	30,200	30,200
45520	Purchased water	-	18,756,145	-	-
46900	Business meetings	-	1,500	1,500	1,500
47000	Miscellaneous	-	3,900	3,900	4,000
Maintenance & Operation Total		\$ -	\$ 20,514,549	\$ 5,325,523	\$ 4,660,493
TOTAL		\$ -	\$ 22,334,723	\$ 7,153,031	\$ 6,569,112

Notes:

* Effective FY 2017-18 Water Works Revenue Fund (572) is under Fund number 592.

**CITY OF GLENDALE
 GLENDALE WATER & POWER DEPARTMENT
 WATER WORKS REVENUE FUND - GWP WATER QUALITY *
 592-473**

		Actual 2016-17	Adopted 2017-18	Revised 2017-18	Adopted 2018-19
Salaries & Benefits					
41100	Salaries	\$ -	\$ 655,677	\$ 658,788	\$ 754,716
41200	Overtime	-	20,000	20,000	20,000
Various	Benefits	-	227,482	227,482	262,924
42700	PERS Retirement	-	173,430	173,430	224,226
42701	PERS cost sharing	-	(21,602)	(21,602)	(25,211)
Salaries & Benefits Total		\$ -	\$ 1,054,987	\$ 1,058,098	\$ 1,236,655
Maintenance & Operation					
43050	Repairs-bldgs & grounds	\$ -	\$ 946	\$ 946	\$ 1,000
43090	Equipment usage	-	16,735	16,735	-
43110	Contractual services	-	340,000	340,000	340,000
44100	Repairs to equipment	-	3,000	3,000	3,000
44450	Postage	-	10,000	10,000	10,000
44750	Liability Insurance	-	18,311	18,311	27,114
44760	Regulatory	-	40,000	40,000	40,000
44800	Membership & dues	-	500	500	500
45350	General supplies	-	220,000	220,000	220,000
45450	Printing and graphics	-	30,000	30,000	30,000
Maintenance & Operation Total		\$ -	\$ 679,492	\$ 679,492	\$ 671,614
TOTAL		\$ -	\$ 1,734,479	\$ 1,737,590	\$ 1,908,269

Notes:

* Effective FY 2017-18 Water Works Revenue Fund (572) is under Fund number 592.

**CITY OF GLENDALE
 GLENDALE WATER & POWER DEPARTMENT
 WATER DEPRECIATION FUND - GWP ADMINISTRATION *
 573-911**

	Actual 2016-17	Adopted 2017-18	Revised 2017-18	Adopted 2018-19
Maintenance & Operation				
45623 General plant allocation	\$ 36,792	\$ -	\$ -	\$ -
Maintenance & Operation Total	\$ 36,792	\$ -	\$ -	\$ -
Capital Improvement				
59999 Asset capitalization	\$ (3,718,214)	\$ -	\$ -	\$ -
Capital Improvement Total	\$ (3,718,214)	\$ -	\$ -	\$ -
TOTAL	\$ (3,681,422)	\$ -	\$ -	\$ -

Notes:

* Effective FY 2017-18 Water Depreciation Fund (573) is under Fund number 593.

**CITY OF GLENDALE
 GLENDALE WATER & POWER DEPARTMENT
 WATER DEPRECIATION FUND - WATER SERVICES*
 573-951**

		Actual 2016-17	Adopted 2017-18	Revised 2017-18	Adopted 2018-19
Salaries & Benefits					
41100	Salaries	\$ 307,619	\$ -	\$ -	\$ -
41200	Overtime	45,349	-	-	-
41300	Hourly wages	13,090	-	-	-
Various	Benefits	63,665	-	-	-
42700	PERS Retirement	35,464	-	-	-
42701	PERS cost sharing	(5,478)	-	-	-
Salaries & Benefits Total		\$ 459,708	\$ -	\$ -	\$ -
Maintenance & Operation					
43090	Equipment usage	\$ 14,227	\$ -	\$ -	\$ -
43110	Contractual services	1,174,747	-	-	-
43111	Construction services	687,263	-	-	-
44750	Liability Insurance	9,883	-	-	-
44760	Regulatory	22,945	-	-	-
45350	General supplies	116,150	-	-	-
45600	A & G overhead	440,540	-	-	-
45621	Employee benefit overhead	146,657	-	-	-
47059	Capitalized interest-water	486,748	-	-	-
Maintenance & Operation Total		\$ 3,099,160	\$ -	\$ -	\$ -
Capital Improvement					
51800	Mobile equipment	\$ 27,485	\$ -	\$ -	\$ -
Capital Improvement Total		\$ 27,485	\$ -	\$ -	\$ -
Capital Outlay					
51000	Capital outlay	\$ 95,069	\$ -	\$ -	\$ -
Capital Outlay Total		\$ 95,069	\$ -	\$ -	\$ -
TOTAL		\$ 3,681,422	\$ -	\$ -	\$ -

Notes:

* Effective FY 2017-18 Water Depreciation Fund (573) is under Fund number 593.

**CITY OF GLENDALE
 GLENDALE WATER & POWER DEPARTMENT
 WATER DEPRECIATION FUND - GWP PROJECTS *
 593-490**

		Actual 2016-17	Adopted 2017-18	Revised 2017-18	Adopted 2018-19
Maintenance & Operation					
43111	Construction services	\$ -	\$ -	\$ -	\$ 4,700,000
47059	Capitalized interest-water	-	635,000	635,000	-
Maintenance & Operation Total		\$ -	\$ 635,000	\$ 635,000	\$ 4,700,000
Capital Improvement					
51200	Other improvements	\$ -	\$ 2,057,000	\$ 2,057,000	\$ 3,058,000
51800	Mobile equipment	-	253,800	253,800	-
Capital Improvement Total		\$ -	\$ 2,310,800	\$ 2,310,800	\$ 3,058,000
Capital Outlay					
51000	Capital outlay	\$ -	\$ 37,880	\$ 37,880	\$ 844,062
Capital Outlay Total		\$ -	\$ 37,880	\$ 37,880	\$ 844,062
TOTAL		\$ -	\$ 2,983,680	\$ 2,983,680	\$ 8,602,062

Notes:

* Effective FY 2017-18 Water Depreciation Fund (573) is under Fund number 593.

**CITY OF GLENDALE
 GLENDALE WATER & POWER DEPARTMENT
 WATER CUSTOMER CAPITAL FUND - WATER SERVICES
 575-951**

		Actual 2016-17	Adopted 2017-18	Revised 2017-18	Adopted 2018-19
Salaries & Benefits					
41100	Salaries	\$ 146,319	\$ -	\$ -	\$ -
41200	Overtime	27,685	-	-	-
41300	Hourly wages	12,168	-	-	-
Various	Benefits	24,398	-	-	-
42700	PERS Retirement	5,765	-	-	-
42701	PERS cost sharing	(901)	-	-	-
Salaries & Benefits Total		\$ 215,434	\$ -	\$ -	\$ -
Maintenance & Operation					
43090	Equipment usage	\$ 33,007	\$ -	\$ -	\$ -
43110	Contractual services	13,250	-	-	-
43111	Construction services	55,550	-	-	-
44750	Liability Insurance	5,038	-	-	-
44760	Regulatory	38,883	-	-	-
45350	General supplies	243,546	-	-	-
45600	A & G overhead	228,837	-	-	-
Maintenance & Operation Total		\$ 618,110	\$ -	\$ -	\$ -
Capital Improvement					
59999	Asset capitalization	\$ (833,544)	\$ -	\$ -	\$ -
Capital Improvement Total		\$ (833,544)	\$ -	\$ -	\$ -
TOTAL		\$ -	\$ -	\$ -	\$ -

Notes:

* Effective FY 2017-18 Water Customer Capital Fund (575) is under Fund number 595.

**CITY OF GLENDALE
 GLENDALE WATER & POWER DEPARTMENT
 WATER CUSTOMER CAPITAL FUND - GWP PROJECTS *
 595-490**

		Actual 2016-17	Adopted 2017-18	Revised 2017-18	Adopted 2018-19
Salaries & Benefits					
41100	Salaries	\$ -	\$ -	\$ 350,000	\$ -
Salaries & Benefits Total		\$ -	\$ -	\$ 350,000	\$ -
Maintenance & Operation					
43111	Construction services	\$ -	\$ -	\$ 350,000	\$ -
Maintenance & Operation Total		\$ -	\$ -	\$ 350,000	\$ -
Capital Improvement					
51200	Other improvements	\$ -	\$ 1,471,000	\$ 771,000	\$ 1,471,000
Capital Improvement Total		\$ -	\$ 1,471,000	\$ 771,000	\$ 1,471,000
TOTAL		\$ -	\$ 1,471,000	\$ 1,471,000	\$ 1,471,000

Notes:

* Effective FY 2017-18 Water Customer Capital Fund (575) is under Fund number 595.

**CITY OF GLENDALE
 GLENDALE WATER & POWER DEPARTMENT
 WATER CUSTOMER REPAIR FUND - GWP PROJECTS
 598-490**

	Actual 2016-17	Adopted 2017-18	Revised 2017-18	Adopted 2018-19
Maintenance & Operation				
45350 General supplies	\$ -	\$ -	\$ -	\$ 100,000
Maintenance & Operation Total	\$ -	\$ -	\$ -	\$ 100,000
TOTAL	\$ -	\$ -	\$ -	\$ 100,000

**CITY OF GLENDALE
GLENDALE WATER & POWER DEPARTMENT
PERSONNEL CLASSIFICATION DETAIL**

Classification	Actual 2016-17	Adopted 2017-18	Revised 2017-18	Adopted 2018-19
<u>Salaried Positions</u>				
Administrative Assistant	1.00	1.00	1.00	-
Assistant Engineering Technician	1.00	1.00	2.00	1.00
Assistant Environmental Technician	1.00	1.00	1.00	1.00
Assistant General Manager	2.00	2.00	1.00	1.00
Assistant IT Applications Specialist	3.00	3.00	3.00	3.00
Business Account Representative	1.00	1.00	1.00	-
Business Transformer & Marketing Administrator	1.00	1.00	1.00	1.00
Chief Assistant General Manager	1.00	1.00	2.00	-
Chief Assistant General Manager/Elec&Pwr	1.00	1.00	-	2.00
Civil Engineer II	2.00	2.00	2.00	2.00
Civil Engineering Assistant	3.00	3.00	3.00	3.00
Civil Engineering Associate	1.00	1.00	1.00	1.00
Community Outreach Assistant	2.00	2.00	2.00	-
Community Outreach Associate	-	-	-	2.00
Customer Service Administrator	1.00	1.00	1.00	1.00
Customer Service Field Supervisor	1.00	1.00	1.00	1.00
Customer Service Field Technician	7.00	7.00	7.00	7.00
Customer Service Operation Manager	2.00	2.00	2.00	2.00
Customer Service Representative	1.00	1.00	1.00	1.00
Customer Service Utility Representative	29.00	29.00	29.00	29.00
Deputy Chief Information Officer	-	1.00	1.00	1.00
Electrical Engineer I	3.00	3.00	3.00	4.00
Electrical Engineer II	2.00	3.00	2.00	2.00
Electrical Engineering Assistant	2.00	2.00	-	-
Electrical Engineering Associate	3.00	3.00	5.00	4.00
Electrical Helper	3.00	3.00	3.00	1.00
Electrical Line Mechanic	8.00	8.00	7.00	7.00
Electrical Line Mechanic Apprentice	9.00	9.00	11.00	11.00
Electrical Line Mechanic Supervisor I	9.00	9.00	8.00	8.00
Electrical Line Mechanic Supervisor II	4.00	4.00	3.00	3.00
Electrical Mechanic Assistant	3.00	3.00	3.00	3.00
Electrical Services Administrator	1.00	1.00	1.00	1.00
Electrical Service Planner	3.00	3.00	3.00	3.00
Electrical Superintendent-Const, Trans&Di	1.00	1.00	1.00	1.00
Electrical Superintendent-SubMeter&Comm	1.00	1.00	1.00	1.00
Electrical Superintendent	-	-	1.00	1.00
Electrical System Dispatcher	3.00	3.00	5.00	5.00
Electrical System Dispatcher Supervisor	1.00	1.00	1.00	1.00
Electrical Test Supervisor	1.00	1.00	1.00	1.00
Electrical Test Technician II	8.00	8.00	8.00	8.00
Energy Marketer/Trader	3.00	2.00	2.00	2.00
Energy Trading Manager	1.00	1.00	1.00	1.00
Engineering Aide	1.00	1.00	2.00	1.00
Engineering Technician	6.00	6.00	4.00	5.00
Environmental Program Administrator	1.00	1.00	1.00	1.00
Environmental Program Specialist	1.00	1.00	1.00	1.00
Facilities Services Coordinator	1.00	1.00	-	-
General Manager-GWP	1.00	1.00	1.00	1.00
Human Resources Assistant	0.50	0.50	0.50	0.50
Information Services Administrator	1.00	-	-	-
Information Services Project Manager	-	-	-	1.00
Integrated Resources Plan Administrator	-	-	1.00	1.00

**CITY OF GLENDALE
GLENDALE WATER & POWER DEPARTMENT
PERSONNEL CLASSIFICATION DETAIL**

Classification	Actual 2016-17	Adopted 2017-18	Revised 2017-18	Adopted 2018-19
IT Applications Analyst	-	-	-	1.00
IT Applications Specialist	1.00	1.00	1.00	1.00
Line Clearance Forestry Supervisor I	2.00	2.00	2.00	2.00
Mechanical Engineer I	1.00	1.00	1.00	1.00
Office Services Specialist II	1.00	1.00	1.00	1.00
Office Services Supervisor	1.00	1.00	2.00	2.00
Power Contracts Manager	1.00	1.00	1.00	1.00
Power Line Truck Operator	2.00	2.00	2.00	2.00
Power Planning Manager	1.00	1.00	1.00	1.00
Power Plant Control Operator	15.00	15.00	15.00	15.00
Power Plant Control Operator Apprentice	4.00	4.00	4.00	4.00
Power Plant Inst & Cntrl Supervisor	1.00	1.00	1.00	1.00
Power Plant Maintenance Supervisor	1.00	1.00	1.00	1.00
Power Plant Mechanic	4.00	4.00	4.00	4.00
Power Plant Mechanic Apprentice	5.00	5.00	3.00	4.00
Power Plant Mechanic Assistant	1.00	1.00	1.00	1.00
Power Plant Operation Supervisor	1.00	1.00	1.00	1.00
Power Plant Operator	4.00	4.00	4.00	4.00
Power Plant Shift Supervisor	5.00	5.00	5.00	5.00
Power Plant Superintendent	1.00	1.00	1.00	1.00
Power Plant Technician	1.00	1.00	1.00	1.00
Power Systems Analyst	1.00	1.00	1.00	1.00
Power Systems Associate	1.00	1.00	1.00	1.00
Principal Electrical Engineer	2.00	2.00	1.00	1.00
Principal Engineering Technician	1.00	1.00	1.00	1.00
Principal Utility Financial Analyst	-	-	1.00	1.00
Program Supervisor	1.00	1.00	1.00	1.00
Public Benefis Charge Coordinator	-	-	-	1.00
Public Benefits Charge Marketing Manager	2.00	2.00	2.00	2.00
Revenue Protection Coordinator	1.00	1.00	1.00	-
Safety Services Specialist	1.00	1.00	1.00	1.00
Sr. Administrative Analyst	1.00	1.00	1.00	1.00
Sr. Civil Engineer	2.00	2.00	2.00	2.00
Sr. Customer Service Utility Representative	6.00	6.00	6.00	6.00
Sr. Electrical Engineer	-	-	1.00	1.00
Sr. Electrical Service Planner	3.00	3.00	3.00	3.00
Sr. Electrical System Dispatcher	6.00	6.00	4.00	4.00
Sr. Electrical Test Technician	2.00	2.00	2.00	2.00
Sr. Engineering Technician	1.00	1.00	3.00	2.00
Sr. Environmental Program Specialist	1.00	1.00	1.00	1.00
Sr. IT Application Specialist	2.00	2.00	2.00	1.00
Sr. Mechanical Engineer	2.00	2.00	2.00	2.00
Sr. Office Services Specialist	5.00	5.00	3.00	4.00
Sr. Office Specialist	1.00	1.00	1.00	1.00
Sr. Power Plant Mechanic	2.00	2.00	2.00	2.00
Sr. Power Plant Technician	2.00	2.00	2.00	2.00
Sr. Utility Financial Analyst	3.00	3.00	1.00	1.00
Sr. Utility Locator	1.00	2.00	2.00	2.00
Sr. Water Facilities Operator	1.00	1.00	1.00	1.00
Sr. Water Quality Specialist	1.00	1.00	1.00	1.00
Sr. Water Quality Technician	1.00	1.00	1.00	1.00
Sr. Water System Mechanic	3.00	3.00	5.00	5.00
Station Electrician	1.00	1.00	1.00	1.00
Station Electrician/Operator	9.00	9.00	9.00	9.00
Station Electrician/Operator Apprentice	2.00	2.00	2.00	2.00

**CITY OF GLENDALE
GLENDALE WATER & POWER DEPARTMENT
PERSONNEL CLASSIFICATION DETAIL**

Classification	Actual 2016-17	Adopted 2017-18	Revised 2017-18	Adopted 2018-19				
Station Electrician/Operator Supervisor I	4.00	4.00	4.00	4.00				
Station Electrician/Operator Supervisor II	1.00	1.00	1.00	1.00				
Station Electrician Supervisor I	1.00	1.00	1.00	1.00				
Storekeeper	3.00	3.00	3.00	3.00				
Stores Supervisor	1.00	1.00	2.00	1.00				
Systems Analyst	1.00	1.00	1.00	-				
Transformer Shop Technician	1.00	1.00	1.00	1.00				
Underground Distribution Construction Mechanic I	4.00	4.00	4.00	4.00				
Underground Distribution Construction Mechanic II	1.00	1.00	1.00	1.00				
Utility Building Repairer	1.00	1.00	1.00	1.00				
Utility Business System Supp Manager	1.00	1.00	1.00	1.00				
Utility Construction Inspector	2.00	2.00	2.00	2.00				
Utility Equipment Operator II	1.00	-	-	-				
Utility Finance Manager	1.00	1.00	-	-				
Utility Financial Analyst	-	-	1.00	1.00				
Utility Locator	1.00	1.00	-	-				
Utility Maintenance Worker	1.00	-	-	-				
Utility Manager	-	-	2.00	2.00				
Utility Risk Manager	-	-	1.00	-				
Utility Welder	1.00	1.00	2.00	2.00				
Water Engineering Manager	2.00	-	-	-				
Water Facilities Operator	-	2.00	3.00	2.00				
Water Facilities Supervisor	-	1.00	1.00	1.00				
Water Meter Repairer	2.00	2.00	1.00	1.00				
Water Quality Manager	1.00	1.00	1.00	1.00				
Water Quality Specialist	1.00	1.00	1.00	1.00				
Water Quality Supervisor	1.00	1.00	1.00	1.00				
Water Quality Technician	4.00	4.00	3.00	4.00				
Water Services Administrator	1.00	1.00	1.00	1.00				
Water Superintendent	2.00	2.00	2.00	2.00				
Water System Apprentice	2.00	2.00	1.00	1.00				
Water System Equipment Operator	3.00	4.00	4.00	4.00				
Water System Helper	4.00	4.00	5.00	5.00				
Water System Mechanic	8.00	8.00	6.00	6.00				
Water System Operations Supervisor	2.00	2.00	2.00	2.00				
Water System Supervisor I	1.00	-	-	-				
Water System Supervisor II	5.00	5.00	5.00	5.00				
Total Salaried Positions	<u>328.50</u>	<u>328.50</u>	<u>327.50</u>	<u>321.50</u>				
Hourly Positions								
Administrative Intern	1.20	(2)	-	-	-	-		
Assistant IT Application Specialist	-	-	-	-	-	-		
City Resource Specialist	-	0.98	(3)	0.98	(3)	0.34	(1)	
Customer Service Utility Representative	-	1.20	(2)	1.20	(2)	1.20	(2)	
Electrical Helper	1.80	(3)	4.21	(7)	4.21	(7)	3.61	(6)
Hourly City Worker	3.33	(6)	7.61	(13)	7.61	(13)	15.60	(20)
Line Clearance Forestry Supervisor I	0.46	(1)	0.46	(1)	0.46	(1)	-	-
Mechanical Engineering Assistant	-	-	-	-	-	-	0.75	(1)
Office Service Specialist	-	-	-	-	-	-	0.75	(1)
Power Plant Control Operator	0.46	(1)	-	-	-	-	-	-
Sr. Power Plant Technician	0.39	(1)	-	-	-	-	-	-
Stores Clerk	-	-	1.20	(2)	1.20	(2)	1.20	(2)

**CITY OF GLENDALE
 GLENDALE WATER & POWER DEPARTMENT
 PERSONNEL CLASSIFICATION DETAIL**

Classification	Actual 2016-17	Adopted 2017-18	Revised 2017-18	Adopted 2018-19
Water System Helper	-	0.60	(1) 0.60	(1) 0.60
Water System Supervisor II	-	-	-	-
Total Hourly FTE Positions	<u>7.64</u>	<u>16.26</u>	<u>16.26</u>	<u>24.05</u>
Glendale Water & Power Total	<u><u>336.14</u></u>	<u><u>344.76</u></u>	<u><u>343.76</u></u>	<u><u>345.55</u></u>

Notes:

* Indicates number of employees corresponding to the stated Full-Time Equivalence (FTE).