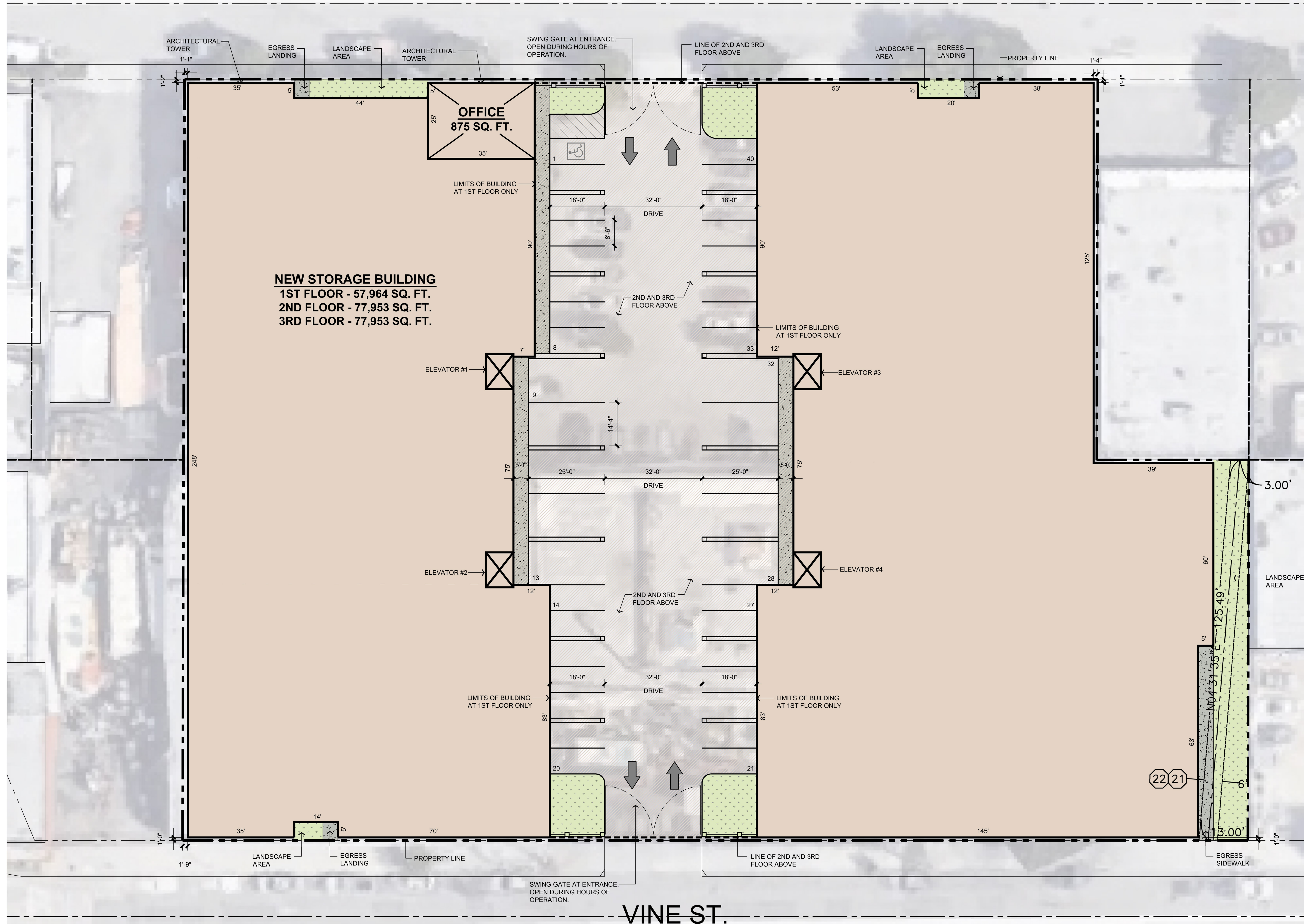


W ELK AVE.



**LOT AREA:** ± 81,875 SQ. FT.  
1.88 ACRES

**STORAGE BUILDING:**  
1ST FLOOR: 57,964 SQ. FT.  
2ND FLOOR: 77,953 SQ. FT.  
3RD FLOOR: 77,953 SQ. FT.  
GROSS STORAGE AREA: 213,870 SQ. FT.

EST. NET STORAGE AREA: ±160,400 SQ. FT.

OFFICE: 875 SQ. FT.  
TOTAL BUILDING AREA: 214,745 SQ. FT.

**PARKING:**  
EXISTING PARKING: ±46 SPACES  
REQUIRED PARKING: (1 SPACE PER 1,000 S.F.) \*214 SPACES  
PROVIDED STANDARD: 30 SPACES  
PROVIDED LOADING: 10 SPACES  
TOTAL PARKING PROVIDED: 40 SPACES  
\* PARKING REDUCTION PERMIT TO BE FILED

**LANDSCAPE:**  
EXISTING: ±725 SQ. FT.  
PROPOSED: ±3,005 SQ. FT.  
REQUIRED: N/A

**USES:**  
SELF-STORAGE: 213,870 SQ. FT.  
OFFICE: 875 SQ. FT.

BUILDING CONSTRUCTION TYPE: IIB  
OCCUPANCY CLASSIFICATIONS:  
SELF STORAGE: S-1  
OFFICE: B  
ALL BUILDINGS ARE EQUIPPED WITH AUTOMATIC FIRE SPRINKLER SYSTEMS IN ACCORDANCE WITH NFPA 13.

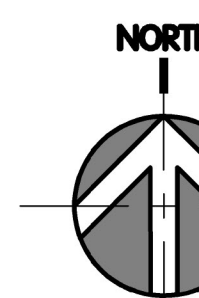
**VICINITY MAP:**



**TROJAN STORAGE**  
1732 AVIATION BLVD., STE. 217  
REDONDO BEACH, CA 90278

BRETT HENRY  
**TROJAN STORAGE GLENDALE**  
GLENDALE, CA

**PRELIMINARY PLOT PLAN**



THIS DRAWING AND ITS CONTENTS ARE INSTRUMENTS OF SERVICE AND ARE THE COPYRIGHTED PROPERTY OF JORDAN ARCHITECTS, INC. THE USE IS EXPRESSLY INTENDED FOR THE PROJECT NOTED ABOVE AND MAY NOT BE REUSED OR REPRODUCED IN WHOLE OR IN PART WITHOUT THE WRITTEN PERMISSION OF JORDAN ARCHITECTS, INC. COPYRIGHT YEAR OF FIRST PUBLICATION 2018 JORDAN ARCHITECTS, INC.

JOB NUMBER: 18-413  
SCALE: 1/16"=1'-0"  
DATE: 06/12/2018

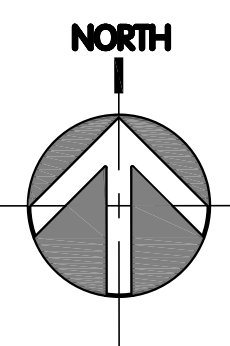
**jordan**  
ARCHITECTS, INC.  
131 CALLE IGLESIA, SUITE 100  
SAN CLEMENTE,  
CA 92672-7541  
Telephone 949-388-8090  
Facsimile 949-388-8290



# PRELIMINARY 1ST FLOOR UNIT MIX PLAN

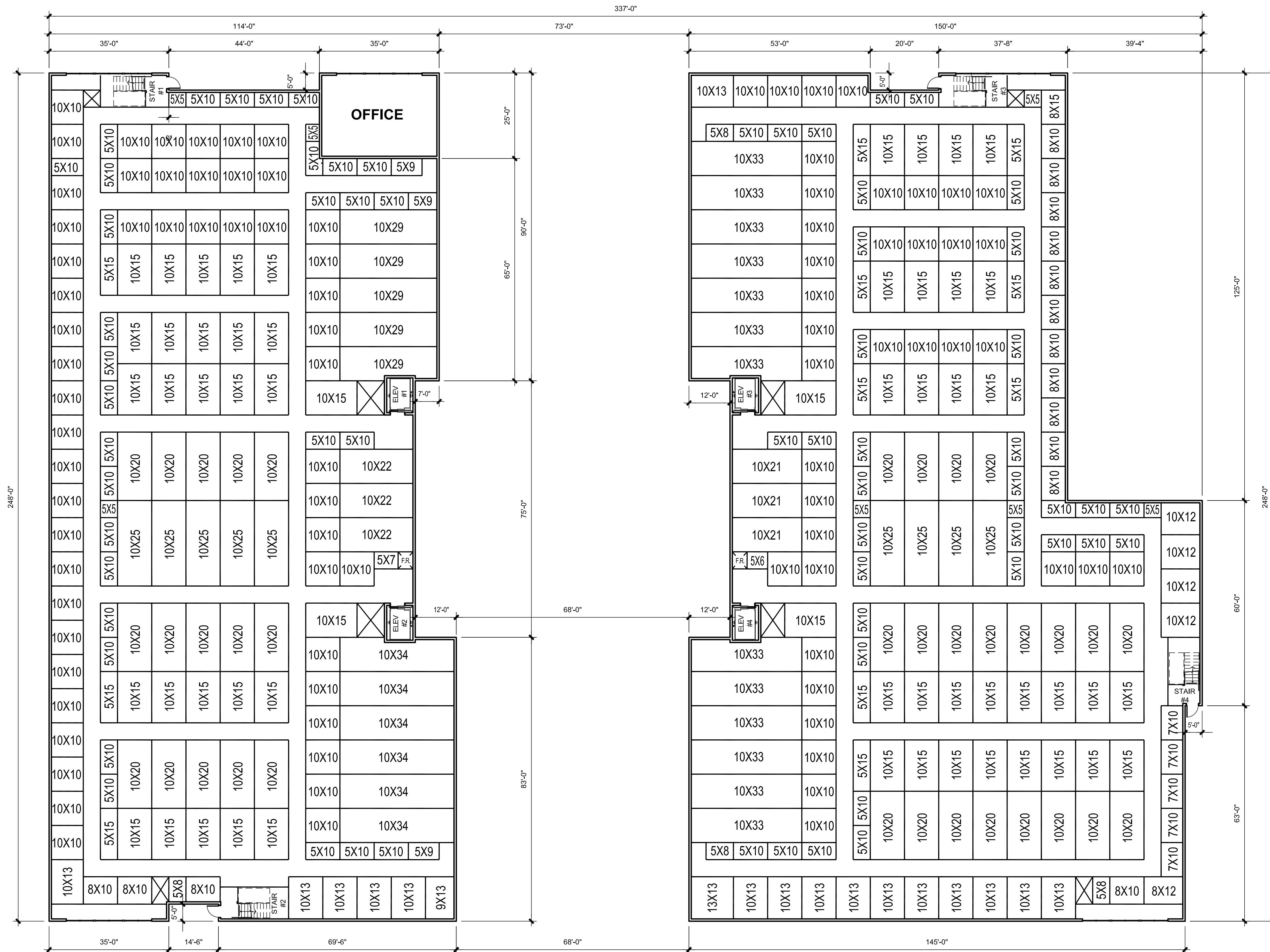
THIS DRAWING AND ITS CONTENTS ARE INSTRUMENTS OF SERVICE AND ARE THE COPYRIGHTED PROPERTY OF JORDAN ARCHITECTS, INC. THE USE IS EXPRESSLY INTENDED FOR THE PROJECT NOTED ABOVE AND MAY NOT BE REPRODUCED OR REPRODUCED IN WHOLE OR IN PART WITHOUT THE WRITTEN PERMISSION OF JORDAN ARCHITECTS, INC. "COPYRIGHT" YEAR OF FIRST PUBLICATION 2018 JORDAN ARCHITECTS, INC.

JOB NUMBER: 18-413  
SCALE: 1/16"=1'-0"  
DATE: 06/12/2018



**TROJAN STORAGE**  
1732 AVIATION BLVD., STE. 217  
REDONDO BEACH, CA 90278

**jordan**  
ARCHITECTS, INC.  
131 CALLE IGLESIA, SUITE 100  
SAN CLEMENTE,  
CA 92672-7541  
Telephone: 949.388-8090  
Facsimile: 949.388-8290



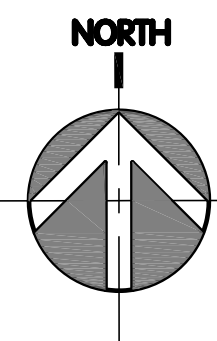


BRETT HENRY  
**TROJAN STORAGE GLENDALE**  
 GLENDALE, CA

# PRELIMINARY 2ND FLOOR UNIT MIX PLAN

THIS DRAWING AND ITS CONTENTS ARE INSTRUMENTS OF SERVICE AND ARE THE COPYRIGHTED PROPERTY OF JORDAN ARCHITECTS, INC. THE USE IS EXPRESSLY INTENDED FOR THE PROJECT NOTED ABOVE AND MAY NOT BE REUSED OR REPRODUCED IN WHOLE OR IN PART WITHOUT THE WRITTEN PERMISSION OF JORDAN ARCHITECTS, INC. "COPYRIGHT" YEAR OF FIRST PUBLICATION 2018 JORDAN ARCHITECTS, INC.

JOB NUMBER: 18-413  
 SCALE: 1/16"=1'-0"  
 DATE: 06/12/2018



**TROJAN STORAGE**  
 1732 AVIATION BLVD., STE. 217  
 REDONDO BEACH, CA 90278

**jordan**  
 ARCHITECTS, INC.  
 131 CALLE IGLESIA, SUITE 100  
 SAN CLEMENTE,  
 CA 92672-7541  
 Telephone 949 388-8090  
 Facsimile 949 388-8290

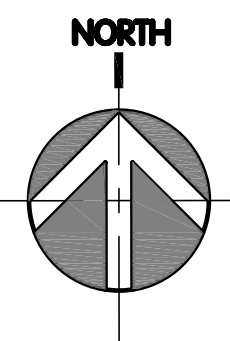


BRETT HENRY  
**TROJAN STORAGE GLENDALE**  
 GLENDALE, CA

**PRELIMINARY 3RD FLOOR UNIT MIX PLAN**

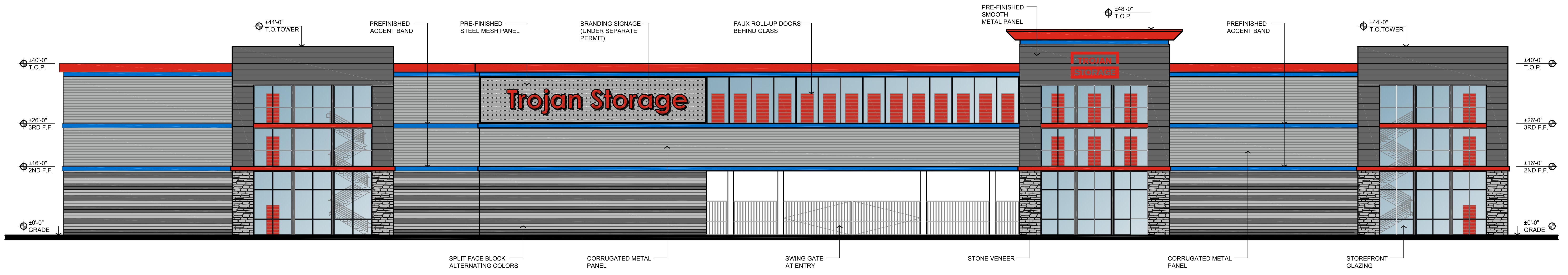
THIS DRAWING AND ITS CONTENTS ARE INSTRUMENTS OF SERVICE AND ARE THE COPYRIGHTED PROPERTY OF JORDAN ARCHITECTS, INC. THE USE IS EXPRESSLY INTENDED FOR THE PROJECT NOTED ABOVE AND MAY NOT BE REUSED OR REPRODUCED IN WHOLE OR IN PART WITHOUT THE WRITTEN PERMISSION OF JORDAN ARCHITECTS, INC. "COPYRIGHT" YEAR OF FIRST PUBLICATION 2018 JORDAN ARCHITECTS, INC.

JOB NUMBER: 18-413  
 SCALE: 1/16"=1'-0"  
 DATE: 06/12/2018



**TROJAN STORAGE**  
 1732 AVIATION BLVD., STE. 217  
 REDONDO BEACH, CA 90278

**jordan**  
 ARCHITECTS, INC.  
 131 CALLE IGLESIA, SUITE 100  
 SAN CLEMENTE,  
 CA 92672-7541  
 Telephone 949.388.8090  
 Facsimile 949.388.8290



**NORTH ELEVATION**  
 3/32"-1'-0" 1

BRETT HENRY  
**TROJAN STORAGE GLENDALE**  
 GLENDALE, CA

**PRELIMINARY ELEVATIONS**

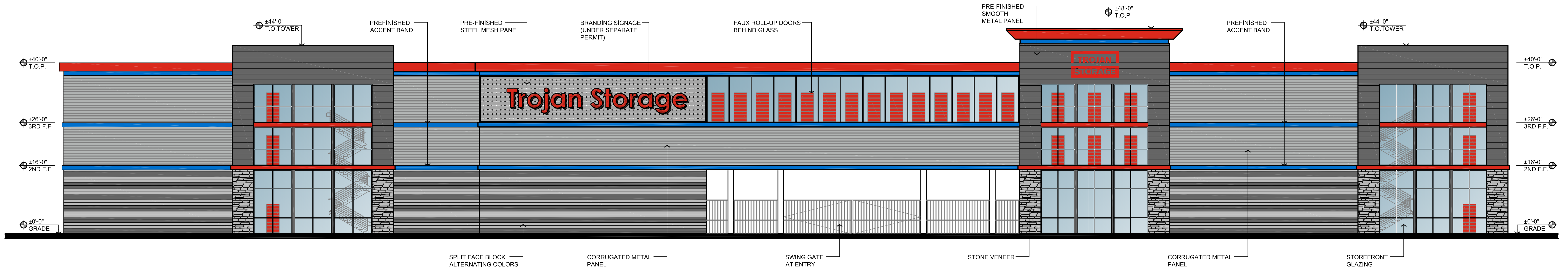
THIS DRAWING AND ITS CONTENTS ARE INSTRUMENTS OF SERVICE AND ARE THE COPYRIGHTED PROPERTY OF JORDAN ARCHITECTS, INC. THE USE IS EXPRESSLY INTENDED FOR THE PROJECT NOTED ABOVE AND MAY NOT BE REUSED OR REPRODUCED IN WHOLE OR IN PART WITHOUT THE WRITTEN PERMISSION OF JORDAN ARCHITECTS, INC. "COPYRIGHT" YEAR OF FIRST PUBLICATION 2018 JORDAN ARCHITECTS, INC.

**JOB NUMBER:** 18-413  
**SCALE:** 3/32"=1'-0"  
**DATE:** 06/12/2018

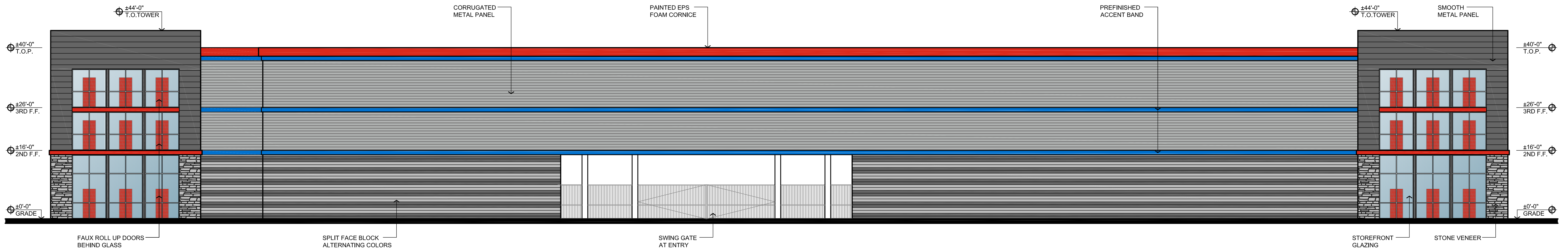
**TROJAN STORAGE**  
 1732 AVIATION BLVD., STE. 217  
 REDONDO BEACH, CA 90278

**jordan**  
 ARCHITECTS, INC.  
 131 CALLE IGLESIA, SUITE 100  
 SAN CLEMENTE,  
 CA 92672-7541  
 Telephone 949.388-8090  
 Facsimile 949.388-8290





**NORTH ELEVATION** ①  
3/32"=1'-0"



**SOUTH ELEVATION** ②  
3/32"=1'-0"

BRETT HENRY  
**TROJAN STORAGE GLENDALE**  
 GLENDALE, CA

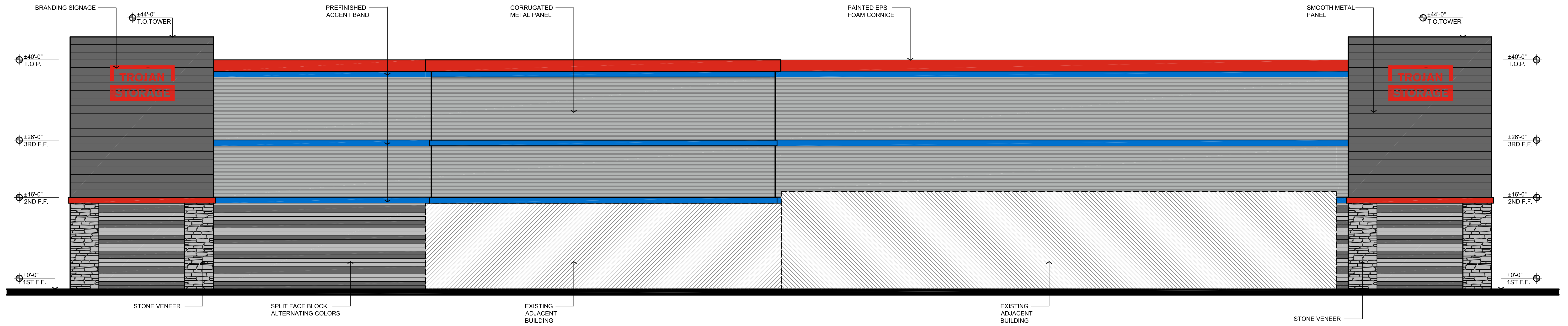
**PRELIMINARY ELEVATIONS**

THIS DRAWING AND ITS CONTENTS ARE INSTRUMENTS OF SERVICE AND ARE THE COPYRIGHTED PROPERTY OF JORDAN ARCHITECTS, INC. THE USE IS EXPRESSLY INTENDED FOR THE PROJECT NOTED ABOVE AND MAY NOT BE REUSED OR REPRODUCED IN WHOLE OR IN PART WITHOUT THE WRITTEN PERMISSION OF JORDAN ARCHITECTS, INC. "COPYRIGHT" YEAR OF FIRST PUBLICATION 2018 JORDAN ARCHITECTS, INC.

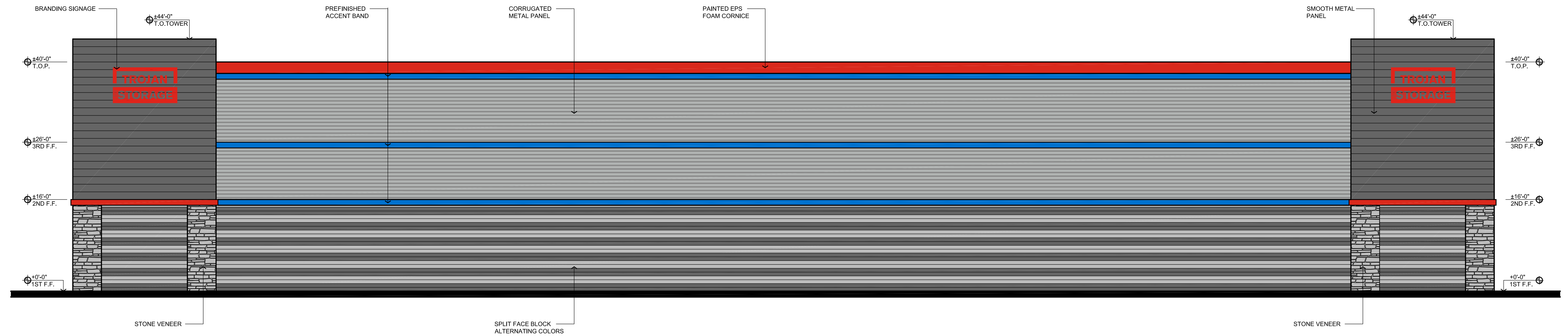
**JOB NUMBER:** 18-413  
**SCALE:** 3/32"=1'-0"  
**DATE:** 06/12/2018

**TROJAN STORAGE**  
 1732 AVIATION BLVD., STE. 217  
 REDONDO BEACH, CA 90278

**jordan**  
 ARCHITECTS, INC.  
 131 CALLE IGLESIA, SUITE 100  
 SAN CLEMENTE,  
 CA 92672-7541  
 Telephone: 949.388-8090  
 Facsimile: 949.388-8290



**EAST ELEVATION**  
1/8"=1'-0" ①



**WEST ELEVATION**  
1/8"=1'-0" ②

BRETT HENRY  
**TROJAN STORAGE GLENDALE**  
 GLENDALE, CA

**PRELIMINARY ELEVATIONS**

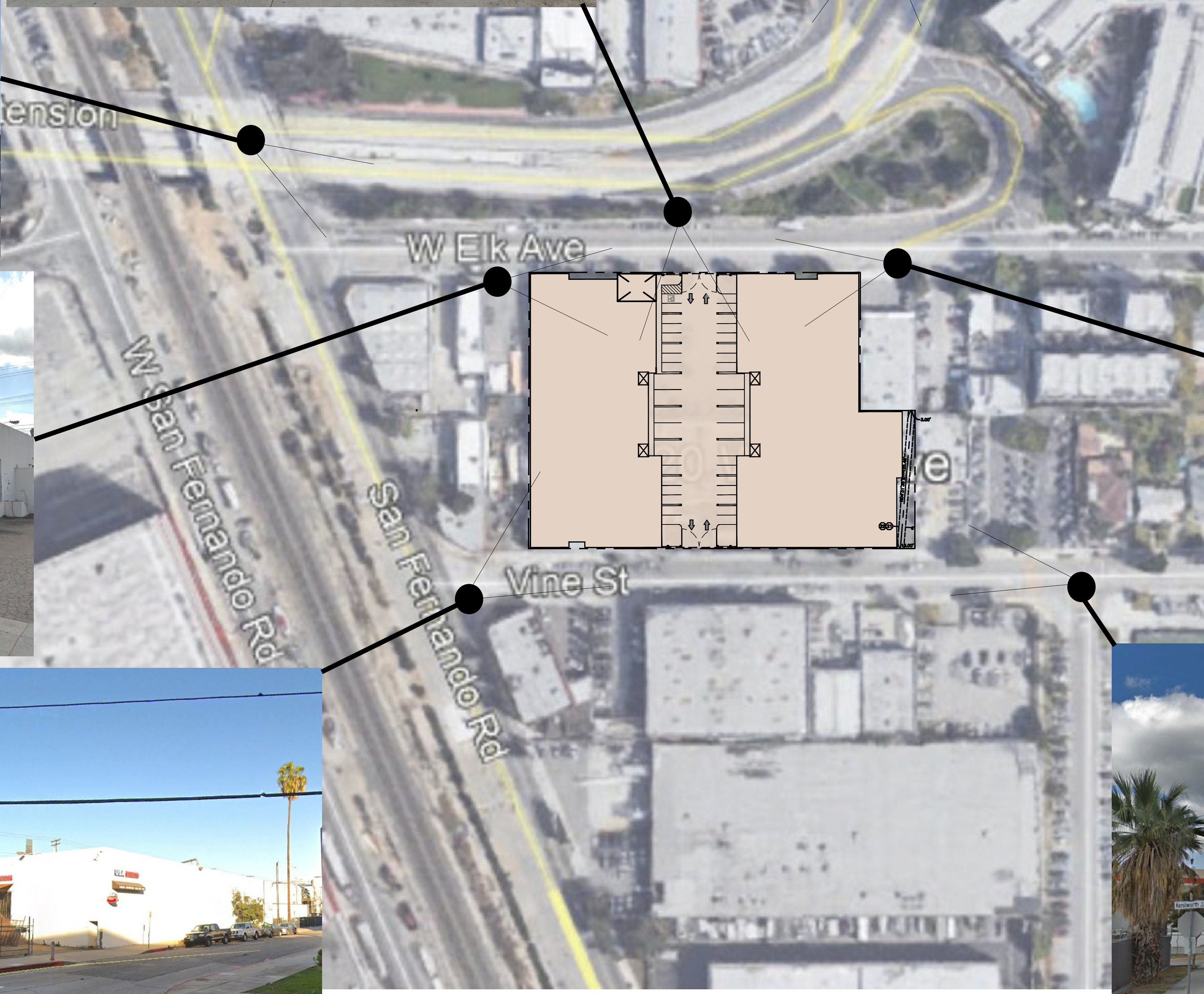
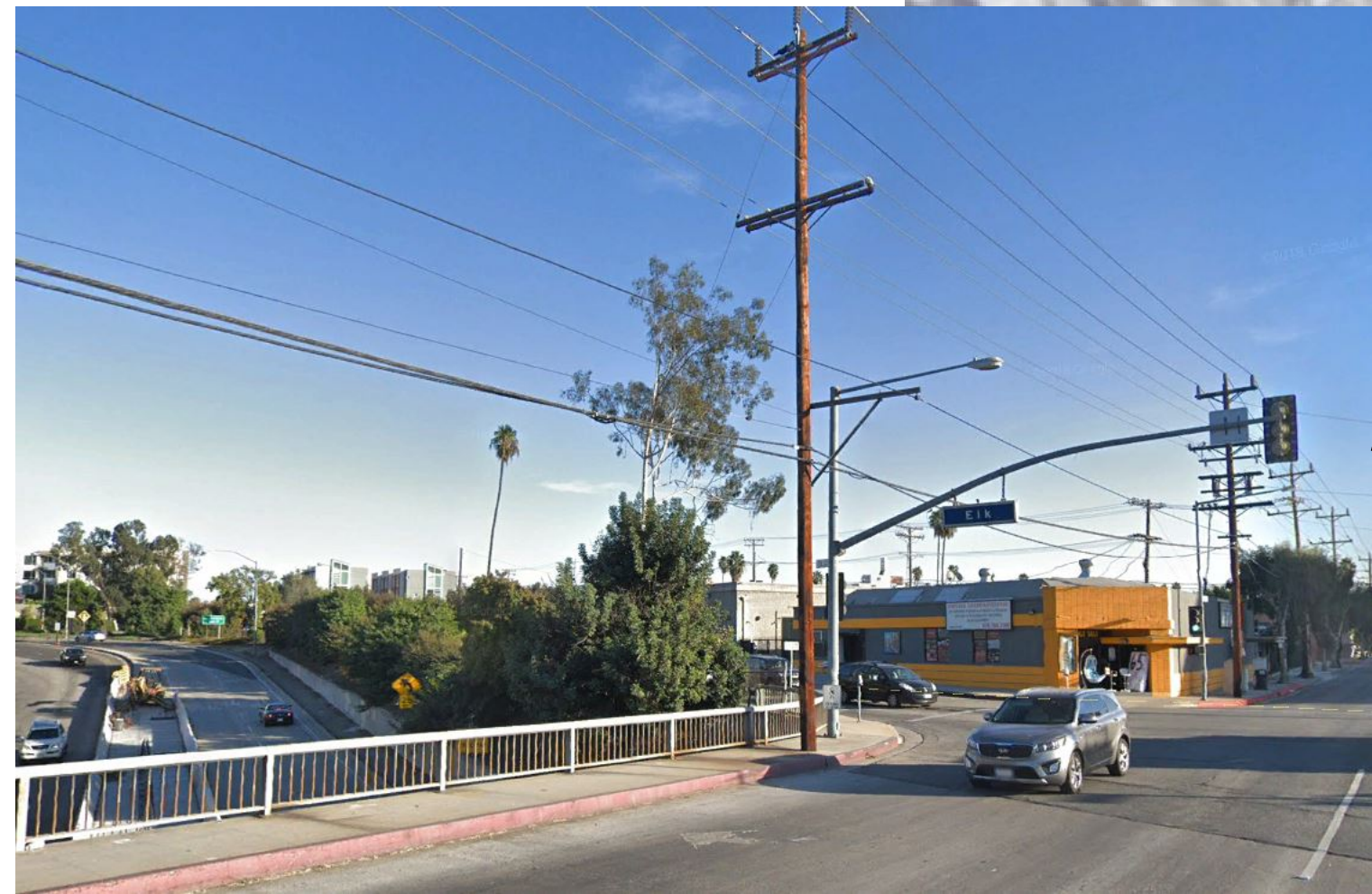
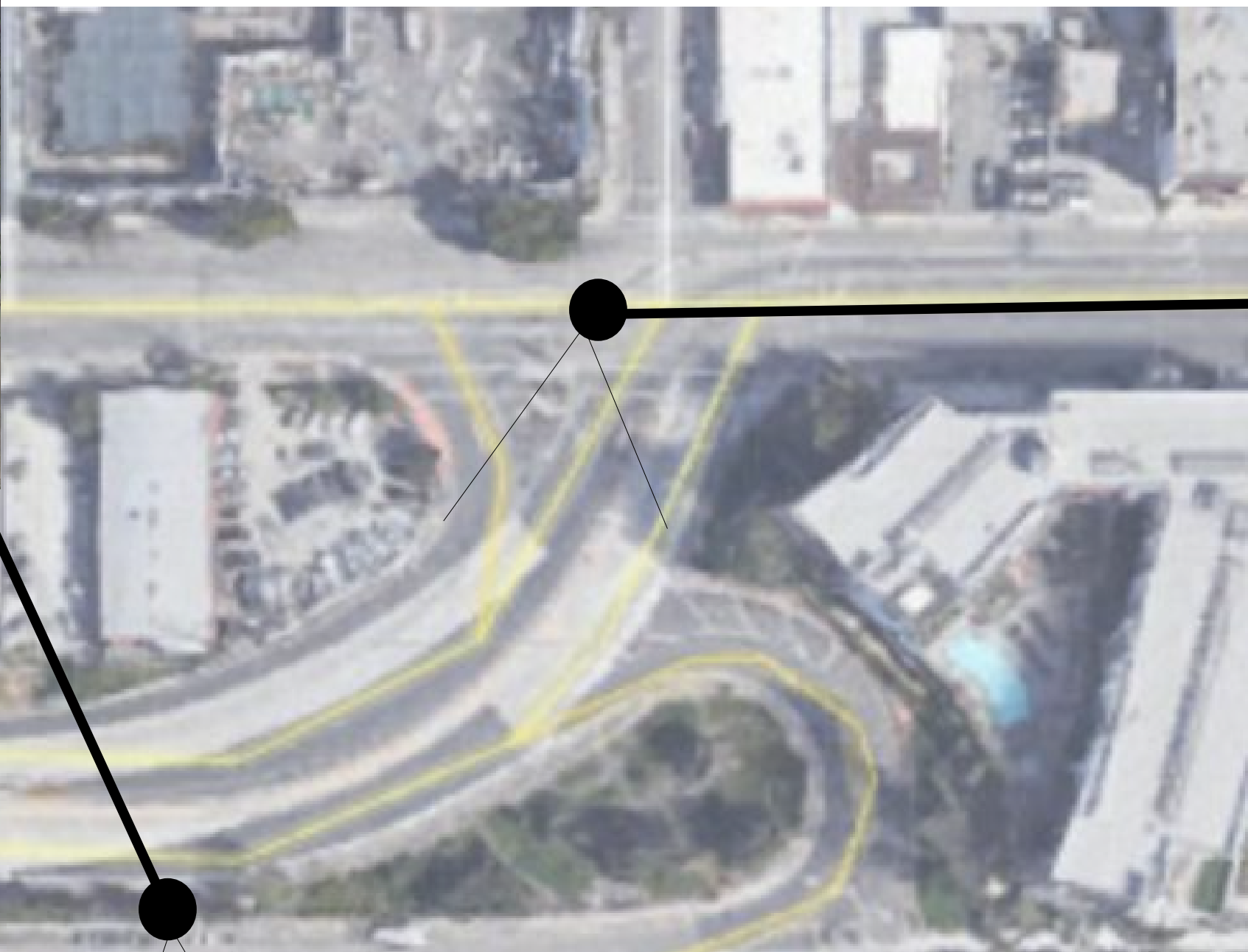
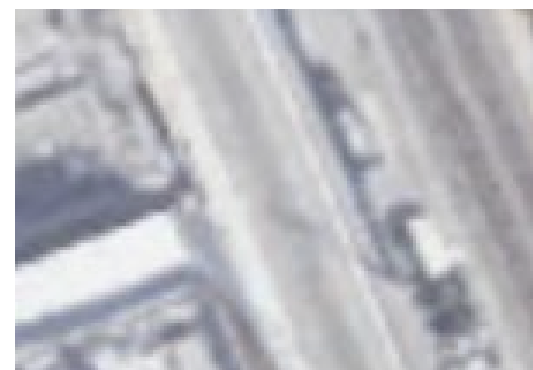
THIS DRAWING AND ITS CONTENTS ARE INSTRUMENTS OF SERVICE AND ARE THE COPYRIGHTED PROPERTY OF JORDAN ARCHITECTS, INC. THE USE IS EXPRESSLY INTENDED FOR THE PROJECT NOTED ABOVE AND MAY NOT BE REUSED OR REPRODUCED IN WHOLE OR IN PART WITHOUT THE WRITTEN PERMISSION OF JORDAN ARCHITECTS, INC. "COPYRIGHT" YEAR OF FIRST PUBLICATION 2018 JORDAN ARCHITECTS, INC.

**JOB NUMBER:** 18-413  
**SCALE:** 1/8"=1'-0"  
**DATE:** 06/12/2018

**TROJAN STORAGE**  
 1732 AVIATION BLVD., STE. 217  
 REDONDO BEACH, CA 90278

**jordan**  
 ARCHITECTS, INC.  
 131 CALLE IGLESIA, SUITE 100  
 SAN CLEMENTE,  
 CA 92672-7541  
 Telephone 949.388-8090  
 Facsimile 949.388-8290



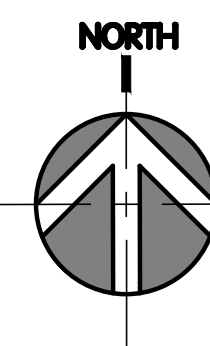


# BRETT HENRY TROJAN STORAGE GLENDALE GLENDALE, CA

## SITE PHOTOS

THIS DRAWING AND ITS CONTENTS ARE INSTRUMENTS OF SERVICE AND ARE THE COPYRIGHTED PROPERTY OF JORDAN ARCHITECTS, INC. THE USE IS EXPRESSLY INTENDED FOR THE PROJECT NOTED ABOVE AND MAY NOT BE REUSED OR REPRODUCED IN WHOLE OR IN PART WITHOUT THE WRITTEN PERMISSION OF JORDAN ARCHITECTS, INC. "COPYRIGHT" YEAR OF FIRST PUBLICATION 2018 JORDAN ARCHITECTS, INC.

JOB NUMBER: 18-413  
SCALE:  
DATE: 06/04/2018



**TROJAN STORAGE**  
1732 AVIATION BLVD., STE. 217  
REDONDO BEACH, CA 90278

**jordan**  
ARCHITECTS, INC.  
131 CALLE IGLESIA, SUITE 100  
SAN CLEMENTE,  
CA 92672-7541  
Telephone 949.388-8090  
Facsimile 949.388-8290