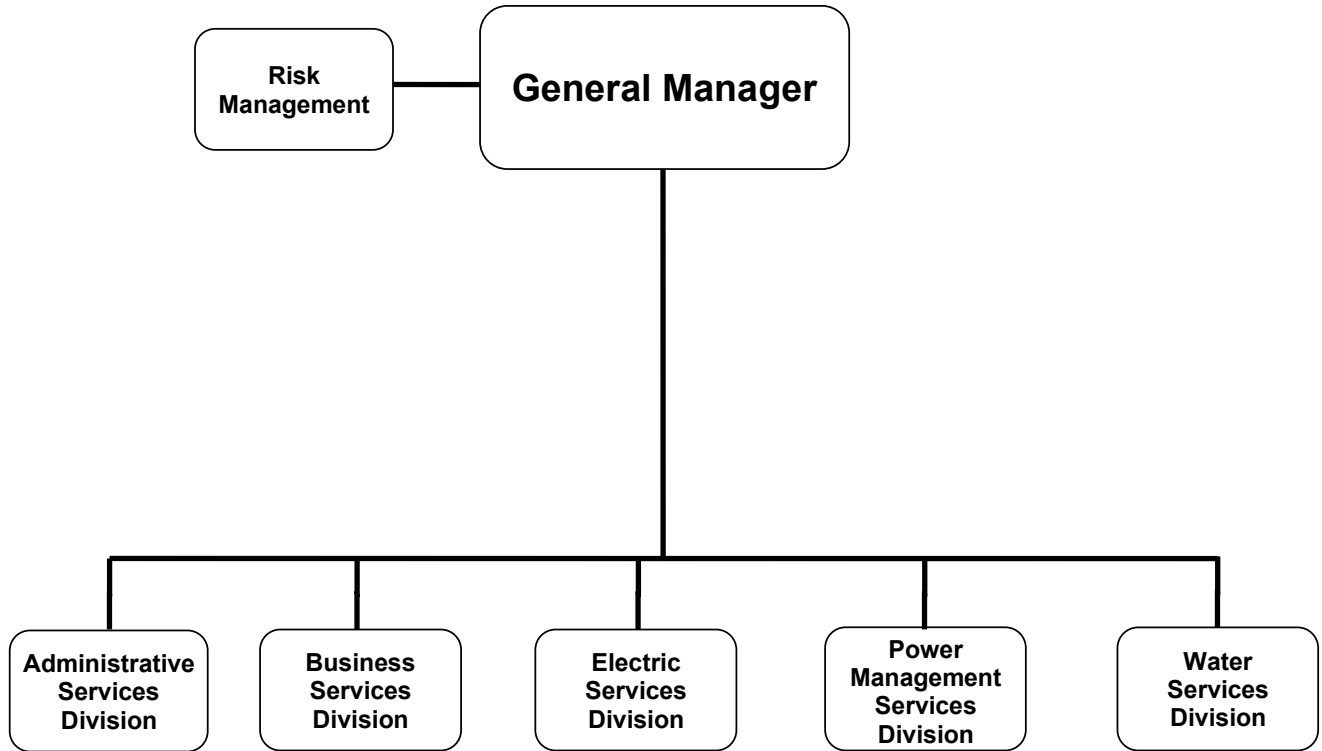


Adopted Budget

FY 2022 - 2023

GLENDALE WATER
& POWER

GLENDALE WATER & POWER



CITY OF GLENDALE

GLENDALE WATER & POWER

MISSION STATEMENT

Glendale Water & Power's (GWP) mission is to cost effectively provide its customers with safe, efficient, reliable and sustainable water and power services. This mission is accomplished through the prudent use of resources, technology, innovation, teamwork and planning to ensure sufficient supply for today and into the future.

DEPARTMENT DESCRIPTION

GWP consists of five divisions:

- Administrative Services Division
- Business Services Division
- Electric Services Division
- Power Management Services Division
- Water Services Division

The focus of these divisions is to ensure that the City is served well today, and is poised to meet future challenges. The key components in Glendale Water & Power's operation include:

Electric Services – Provide safe, reliable and efficient electric service by maintaining and making continuous improvements in the power delivery system.

Power Management Services – Ensure reliable power supply under severe legislative regulatory controls and restrictions through a portfolio of resources.

Water Services – Provide safe and reliable water services that meet or exceed regulatory water quality requirements while optimizing the local production of water resources including water recycling, while efficiently pumping and storing water to minimize energy use.

Customer Service – Achieve high customer satisfaction levels by increasing the value of the programs and services GWP offers and work to continuously provide information to customers on how they can make informed decisions on water and energy use.

Rates – Achieve water and electric rates that will support the infrastructure needs and are appropriate for the level of service provided.

Infrastructure – Assure high service reliability by continuously improving and maintaining the GWP physical plant, electric and water facilities.

Work Force – Through succession planning, develop, retain and promote a safe, highly skilled, dedicated, diverse, and customer-focused work force.

Utility Modernization – Continuously develop and improve programs, systems and technologies to reduce GWP's costs while enhancing customer communications and increasing operational effectiveness.

Legislation & Regulation – Monitor, participate, and influence local, state, and federal legislation and regulations to provide the most benefit to Glendale Water & Power's customers.

Safety – Provide a safe environment for our staff and the community.

CITY OF GLENDALE

GLENDALE WATER & POWER

RELATIONSHIP TO CITY COUNCIL PRIORITIES

Environmental Stewardship

Glendale Water & Power is constantly looking for ways to minimize environmental impacts and promote sustainable water and power resources. GWP's Water Division is a leader in the use of local water sources to reduce the City's dependence on imported water. The Water Division's pioneering efforts in the use of recycled water have been in place since it connected its first customer in 1978. Local, drought resilient, recycled water accounts nearly 7% of the City's total water supply. GWP has also been a leader in groundwater clean-up and restoration. Glendale Water Treatment Plant has been in operation since 2000, providing 25% of the City's water supply from local groundwater, while cleaning up the groundwater basin for future generations.

GWP also implemented two new Clean Energy Programs which include Demand Response for residential and commercial, an energy and water efficient Marketplace for residential customers and an Energy Efficiency program for commercial customers.

Mobility/Connectivity/Safety

Glendale Water & Power launched its new Outage Management System (OMS) and Integrated Voice Recognition (IVR) System to provide a convenient, integrated system to effectively communicate both water and power outage information to customers and internal operations. From the crews to the customers, communication is critical in being efficient and providing faster outage restoration. The OMS and IVR systems will assist GWP in quickly detecting outages, providing efficient operation response, and communicating more efficiently with customers, improving overall outage management and customer satisfaction.

The OMS system provides a live outage map on GWP's website where Glendale residents can see the affected areas at a glance. The OMS is used in the detection and the communication of status and restoration of outages. The OMS also provides two-way text messaging to alert customers of an outage in their area, or for customers to alert GWP of an outage. The IVR system is an automated telephone system that can interact with customers in collaboration with the OMS to enhance reporting and communications during outages.

Infrastructure

The Water Division's ongoing Capital Improvement Program has economically and consistently replaced and rehabilitated thousands of feet of aging water mains, hundreds of old water service lines, and several important water pump stations, tanks and reservoirs. The Water CIP will continue to ensure that the City's water system is robust and reliable today and tomorrow.

Additionally, GWP is developing an Electric System Master Plan by conducting system-wide inspections of all transmission and distribution assets, and providing guidelines for planning Capital Improvement Projects for future system upgrades and modifications.

GWP is also continuing its utility modernization efforts through the improvement of its electric distribution system throughout Glendale. The 4kV/12kV Conversion Program consists of the reconstruction and upgrade of the current overhead electrical system to a higher voltage in order to provide a more reliable delivery of power to the customers. This higher voltage and new equipment, including the replacement of aging power poles and transformers will increase capacity and efficiency by allowing more power to flow

CITY OF GLENDALE
GLENDALE WATER & POWER

through the system, thereby increasing GWP's ability to meet demand and to decrease the amount of energy loss experienced with the older less efficient system.

As part of our electrification efforts and expanding Glendale's Electric Vehicle Infrastructure, GWP has installed 16 Level II (EV) chargers, one DC fast charger throughout Glendale and is in the process of installing 26 more Level II and one more DC faster charger. Public throughout Glendale and plans to expand Glendale's EV infrastructure in the near future with even more public chargers and programs.

Lastly, GWP is at the beginning of the construction of the fiber backbone or the "middle mile" for the new fiber optic network it is planning for. This will provide high speed broadband services to business institutions and other City facilities.

City of Glendale
Summary of Appropriations
Glendale Water & Power Department
For the Years Ending June 30

	Actual 2020-21	Adopted 2021-22	Revised 2021-22	Adopted 2022-23
Electric Public Benefit Fund				
Electric Public Benefit Fund (2910-4800)	\$ 7,121,053	\$ 8,767,161	\$ 8,773,839	\$ 7,534,999
Total Electric Public Benefit Fund	\$ 7,121,053	\$ 8,767,161	\$ 8,773,839	\$ 7,534,999
Fiber Optic Fund				
Fiber Optic Fund (5400-4810)	\$ 213,667	\$ 169,497	\$ 171,387	\$ 253,168
Total Fiber Optic Fund	\$ 213,667	\$ 169,497	\$ 171,387	\$ 253,168
Electric Utility				
Electric Surplus Fund (5810-4505)	\$ 17,502,800	\$ -	\$ -	\$ -
Electric Works Revenue Fund				
Projects (5820-0020)	\$ 24,182	\$ -	\$ 5,200,272	\$ -
Administration (5820-4505)	43,344,510	64,530,653	64,530,653	60,580,670
Admin Customer Service (5820-4509)	7,622,946	8,295,034	8,419,854	10,434,046
Admin Consv & Utility Mod (5820-4520)	2,308,752	6,204,645	6,204,645	5,812,533
Business System Support (5820-4521)	2,188,956	3,112,283	3,112,283	3,149,709
Admin Utility Finance (5820-4530)	490,785	634,996	634,996	684,503
Admin Environmental & Safety (5820-4540)	531,726	865,893	865,893	653,015
Admin UOC & Warehouse (5820-4550)	880,744	1,052,998	1,052,998	1,080,599
Admin Yard (5820-4560)	151,391	168,597	168,597	179,135
Electric Engineering (5820-4600)	2,988,287	4,288,484	4,288,484	5,611,864
Electric Customer Support (5820-4610)	1,400,684	993,207	993,207	1,094,802
Electric Street Light (5820-4620)	665,616	585,666	585,666	543,465
Electric Howard Substation (5820-4630)	2,509,085	2,749,062	2,749,062	2,918,879
Electric Meter & Test Shop (5820-4640)	2,101,479	2,051,681	2,051,681	2,778,030
Electric Station Maintenance (5820-4650)	4,273,215	4,539,608	4,539,608	5,466,469
Electric OH & UG (5820-4660)	10,248,553	11,755,634	11,755,634	13,587,263
Electric Substructure (5820-4670)	837,405	803,348	803,348	2,249,206
Power Management (5820-4680)	105,587,193	149,168,908	149,168,908	173,068,678
Power Plant (5820-4690)	11,212,876	12,655,247	12,711,027	13,004,364
Total Electric Works Revenue Fund	\$ 199,368,384	\$ 274,455,944	\$ 279,836,816	\$ 302,897,230
Electric Depreciation Fund				
Projects (5830-0020)	\$ 9,390	\$ 11,924,680	\$ 14,024,680	\$ 48,415,000
GWP Administration (5830-4505)	-	-	-	340,560
Electric Engineering (5830-4600)	-	-	-	2,869,000
Power Plant (5830-4690)	-	-	-	250,000
Total Electric Depreciation Fund	\$ 9,390	\$ 11,924,680	\$ 14,024,680	\$ 51,874,560
Electric Customer Paid Capital Fund (5850-0020)	\$ -	\$ 2,000,000	\$ 2,000,000	\$ 2,000,000
Energy Cost Adjustment Charge Fund (5860-4680)	18,782,851	-	-	-
Regulatory Adjustment Trust Fund (5870-4680)	134,530	-	-	-
Electric Customer Repair Fund (5880-0020)	-	50,000	50,000	50,000
Total Electric Utility	\$ 235,797,956	\$ 288,430,624	\$ 295,911,496	\$ 356,821,790

City of Glendale
Summary of Appropriations
Glendale Water & Power Department
For the Years Ending June 30

	Actual 2020-21	Adopted 2021-22	Revised 2021-22	Adopted 2022-23
Water Utility				
Water Works Revenue Fund				
Projects (5920-0020)	\$ 5,639	\$ -	\$ 950,269	\$ -
Administration (5920-4505)	15,746,213	15,857,424	15,857,424	15,499,665
Admin Customer Service (5920-4509)	2,203,718	2,538,557	2,587,499	2,743,532
Admin Consvr & Utility Mod (5920-4520)	358,827	462,622	462,622	493,257
Business System Suport (5920-4521)	491,538	773,971	773,971	831,191
Admin Utility Finance (5920-4530)	136,734	176,978	176,978	190,864
Admin Environmental & Safety (5920-4540)	145,321	225,584	225,584	184,461
Admin UOC & Warehouse (5920-4550)	246,424	310,733	310,733	307,570
Admin Yard (5920-4560)	42,644	91,452	91,452	96,872
Water Engineering (5920-4700)	23,190,133	26,844,529	26,924,608	28,419,699
Water Distribution (5920-4710)	2,957,129	3,691,244	3,691,244	3,893,719
Water Operation (5920-4720)	5,557,418	3,257,271	3,257,271	3,440,711
Water Quality (5920-4730)	1,591,777	1,797,057	1,797,057	1,952,786
Total Water Works Revenue Fund	\$ 52,673,514	\$ 56,027,422	\$ 57,106,712	\$ 58,054,327
Water Depreciation Fund				
Projects (5930-0020)	\$ -	\$ 11,588,120	\$ 15,681,620	\$ 11,382,500
Administration (5930-4505)	-	-	-	55,440
Water Engineering (5930-4700)	-	-	-	965,000
Total Water Depreciation Fund	\$ -	\$ 11,588,120	\$ 15,681,620	\$ 12,402,940
Water Customer Paid Capital Fund (5950-0020)	\$ -	\$ 1,275,000	\$ 1,275,000	\$ 1,275,000
Water Customer Repair Fund (5980-0020)	28,298	50,000	50,000	50,000
Total Water Utility	\$ 52,701,811	\$ 68,940,542	\$ 74,113,332	\$ 71,782,267
Department Grand Total	\$ 295,834,488	\$ 366,307,824	\$ 378,970,054	\$ 436,392,224

City of Glendale
Glendale Water & Power Department
Electric Public Benefit Fund - GWP Public Benefits
(2910-4800)

	Actual 2020-21	Adopted 2021-22	Revised 2021-22	Adopted 2022-23
Salaries & Benefits				
41100 Salaries	\$ 364,303	\$ 365,190	\$ 368,423	\$ 384,279
41200 Overtime	8,471	-	-	-
41300 Hourly wages	39,766	36,216	36,216	-
Various Benefits	91,274	94,661	96,176	111,735
42700 PERS retirement	145,241	139,560	139,560	151,918
42701 PERS cost sharing	(16,006)	(14,427)	(12,497)	(11,389)
Salaries & Benefits Total	\$ 633,049	\$ 621,200	\$ 627,878	\$ 636,543
Maintenance & Operation				
43110 Contractual services	\$ 1,083,537	\$ 2,200,000	\$ 2,200,000	\$ 2,975,750
44450 Postage	1,434	5,000	5,000	5,000
44550 Travel	-	5,000	5,000	5,000
44650 Training	-	1,000	1,000	1,000
45250 Office supplies	-	2,000	2,000	2,000
45512 Public benefit programs	4,830,094	5,500,000	5,500,000	3,458,000
45513 Public benefit programs-Tax	106,816	-	-	-
45680 Uncollectible accounts	11,300	-	-	-
45681 Business meetings	-	1,000	1,000	1,000
45682 Miscellaneous	26	15,000	15,000	15,000
46007 Cost allocation charge	108,533	98,406	98,406	102,873
46008 Fleet equipment rental charge	40,000	-	-	-
46009 ITD service charge	40,601	44,036	44,036	53,893
46010 Building maint service charge	24,753	27,201	27,201	30,434
46011 Liability Insurance	14,533	19,940	19,940	21,128
46013 GWP Municipal Billing	227,378	227,378	227,378	227,378
46014 Contractual cost reduction	(1,000)	-	-	-
Maintenance & Operation Total	\$ 6,488,004	\$ 8,145,961	\$ 8,145,961	\$ 6,898,456
Total	\$ 7,121,053	\$ 8,767,161	\$ 8,773,839	\$ 7,534,999

**City of Glendale
Glendale Water & Power Department
Fiber Optic Fund - Fiber Optic
(5400-4810)**

	Actual 2020-21	Adopted 2021-22	Revised 2021-22	Adopted 2022-23
Salaries & Benefits				
41100 Salaries	\$ 168,767	\$ 174,721	\$ 175,700	\$ 179,813
Various Benefits	25,016	26,201	26,390	27,570
42700 PERS retirement	20,435	66,869	66,869	71,169
42701 PERS cost sharing	(6,677)	(6,913)	(6,191)	(5,338)
42799 Salary charges in (out)	-	(192,500)	(192,500)	(190,000)
Salaries & Benefits Total	\$ 207,542	\$ 68,378	\$ 70,268	\$ 83,214
Maintenance & Operation				
43110 Contractual services	\$ -	\$ 77,800	\$ 77,800	\$ 152,800
44760 Regulatory	115	-	-	-
45350 General supplies	-	10,000	10,000	-
45682 Miscellaneous	9	-	-	-
46007 Cost allocation charge	-	4,634	4,634	7,264
46011 Liability Insurance	6,002	8,685	8,685	9,890
Maintenance & Operation Total	\$ 6,126	\$ 101,119	\$ 101,119	\$ 169,954
Total	\$ 213,667	\$ 169,497	\$ 171,387	\$ 253,168

**City of Glendale
 Glendale Water & Power Department
 Electric Surplus Fund - Administration
 (5810-4505)**

	Actual 2020-21	Adopted 2021-22	Revised 2021-22	Adopted 2022-23
Transfers				
48010 Transfer to general fund	\$ 17,502,800	\$ -	\$ -	\$ -
Transfers Total	\$ 17,502,800	\$ -	\$ -	\$ -
Total	\$ 17,502,800	\$ -	\$ -	\$ -

**City of Glendale
 Glendale Water & Power Department
 Electric Works Revenue Fund - Projects
 (5820-0020)**

	Actual 2020-21	Adopted 2021-22	Revised 2021-22	Adopted 2022-23
Maintenance & Operation				
43113 Direct Assist - Domestic	\$ -	\$ -	\$ 4,681,778	\$ -
43114 Direct Assist - Commercial	-	-	518,494	-
45350 General supplies	24,182	-	-	-
Maintenance & Operation Total	\$ 24,182	\$ -	\$ 5,200,272	\$ -
Total	\$ 24,182	\$ -	\$ 5,200,272	\$ -

City of Glendale
Glendale Water & Power Department
Electric Works Revenue Fund - Administration
(5820-4505)

	Actual 2020-21	Adopted 2021-22	Revised 2021-22	Adopted 2022-23
Salaries & Benefits				
41100 Salaries	\$ 528,399	\$ 636,393	\$ 636,393	\$ 629,335
41200 Overtime	1,021	-	-	-
41300 Hourly wages	3,036	-	-	-
Various Benefits	146,088	126,877	126,877	154,628
42700 PERS retirement	1,588,814	243,766	243,766	248,129
42701 PERS cost sharing	(20,952)	(25,200)	(25,200)	(18,611)
Salaries & Benefits Total	\$ 2,246,406	\$ 981,836	\$ 981,836	\$ 1,013,481
Maintenance & Operation				
43110 Contractual services	\$ 322,836	\$ 311,685	\$ 311,685	\$ 428,404
44450 Postage	-	1,000	1,000	1,000
44550 Travel	-	-	-	12,000
44650 Training	631	-	-	12,000
44700 Computer software	1,582	-	-	-
44760 Regulatory	-	20,000	20,000	15,000
44800 Membership and dues	2,780	90,000	90,000	23,000
45050 Periodicals and newspapers	75	-	-	-
45150 Furniture and equipment	-	-	-	100,000
45170 Computer hardware	-	500	500	500
45250 Office supplies	1,819	15,000	15,000	15,000
45350 General supplies	5,459	5,000	5,000	5,000
45680 Uncollectible accounts	-	-	-	5,000
45681 Business meetings	634	5,000	5,000	5,000
45682 Miscellaneous	1,410	15,000	15,000	50,100
46000 Depreciation	23,797,311	25,083,485	25,083,485	21,144,684
46002 Amortization expense	86,131	84,202	84,202	37,028
46005 Utilities	41,785	55,475	55,475	79,844
46007 Cost allocation charge	5,325,996	5,461,298	5,461,298	5,380,626
46008 Fleet equipment rental charge	977,876	977,876	977,876	977,868
46009 ITD service charge	2,991,866	3,283,447	3,283,447	3,345,354
46010 Building maint service charge	1,543,182	1,762,946	1,762,946	1,716,152
46011 Liability Insurance	18,715	31,622	31,622	34,609
46012 Excess insurance and surety	265,055	456,300	456,300	456,300
46014 Contractual cost reduction	(2,538)	-	-	-
47050 Interest on bonds	5,715,499	6,339,000	6,339,000	6,172,000
Maintenance & Operation Total	\$ 41,098,104	\$ 43,998,836	\$ 43,998,836	\$ 40,016,469
Transfers				
48010 Transfer to general fund	\$ -	\$ 19,549,981	\$ 19,549,981	\$ 19,550,720
Transfers Total	\$ -	\$ 19,549,981	\$ 19,549,981	\$ 19,550,720
Total	\$ 43,344,510	\$ 64,530,653	\$ 64,530,653	\$ 60,580,670

City of Glendale
Glendale Water & Power Department
Electric Works Revenue Fund - Admin Customer Service
(5820-4509)

	Actual 2020-21	Adopted 2021-22	Revised 2021-22	Adopted 2022-23
Salaries & Benefits				
41100 Salaries	\$ 2,450,365	\$ 2,764,184	\$ 2,820,183	\$ 2,745,791
41200 Overtime	36,518	45,052	45,052	43,533
41300 Hourly wages	20,273	29,200	29,200	69,204
Various Benefits	538,073	616,987	663,982	726,472
42700 PERS retirement	977,079	1,063,270	1,063,270	1,110,759
42701 PERS cost sharing	(97,450)	(109,906)	(88,080)	(83,303)
Salaries & Benefits Total	\$ 3,924,859	\$ 4,408,787	\$ 4,533,607	\$ 4,612,456
Maintenance & Operation				
43110 Contractual services	\$ 1,233,066	\$ 1,601,548	\$ 1,601,548	\$ 1,661,664
44450 Postage	5,628	12,000	12,000	12,000
44550 Travel	-	10,200	10,200	7,752
44650 Training	3,412	10,032	10,032	10,032
44760 Regulatory	6,424	-	-	-
44800 Membership and dues	-	550	550	550
45150 Furniture and equipment	512	9,500	9,500	9,500
45170 Computer hardware	(1,125)	-	-	-
45250 Office supplies	1,813	15,000	15,000	15,000
45350 General supplies	-	2,000	2,000	2,000
45652 Claims	81	-	-	-
45680 Uncollectible accounts	719,209	300,000	300,000	1,903,311
45681 Business meetings	-	1,000	1,000	1,000
45682 Miscellaneous	1,599	1,500	1,500	1,500
46007 Cost allocation charge	590,657	616,283	616,283	874,830
46008 Fleet equipment rental charge	32,510	32,510	32,510	33,364
46009 ITD service charge	579,396	635,863	635,863	647,851
46010 Building maint service charge	436,839	497,241	497,241	484,043
46011 Liability Insurance	88,107	141,020	141,020	157,193
46014 Contractual cost reduction	(41)	-	-	-
Maintenance & Operation Total	\$ 3,698,087	\$ 3,886,247	\$ 3,886,247	\$ 5,821,590
Total	\$ 7,622,946	\$ 8,295,034	\$ 8,419,854	\$ 10,434,046

City of Glendale
Glendale Water & Power Department
Electric Works Revenue Fund - Admin Consvr & Utility Mod
(5820-4520)

	Actual 2020-21	Adopted 2021-22	Revised 2021-22	Adopted 2022-23
Salaries & Benefits				
41100 Salaries	\$ 336,878	\$ 348,756	\$ 348,756	\$ 365,966
41200 Overtime	1,969	-	-	-
41300 Hourly wages	-	141,440	141,440	113,940
Various Benefits	57,700	62,107	62,107	75,164
42700 PERS retirement	121,036	133,099	133,099	190,065
42701 PERS cost sharing	(13,352)	(13,761)	(13,761)	(14,260)
Salaries & Benefits Total	\$ 504,230	\$ 671,641	\$ 671,641	\$ 730,875
Maintenance & Operation				
43110 Contractual services	\$ 835,930	\$ 3,701,643	\$ 3,701,643	\$ 3,071,263
44200 Advertising	78	11,500	11,500	19,700
44450 Postage	269	75,000	75,000	75,000
44550 Travel	-	2,000	2,000	5,850
44650 Training	1,794	2,500	2,500	5,850
44800 Membership and dues	411	2,000	2,000	10,000
45150 Furniture and equipment	-	1,500	1,500	3,500
45250 Office supplies	866	4,000	4,000	4,000
45350 General supplies	1,291	10,000	10,000	10,000
45450 Printing and graphics	-	50,000	50,000	50,000
45514 Low carbon fuel std programs	942,119	1,620,000	1,620,000	1,767,600
45681 Business meetings	-	1,000	1,000	5,000
45682 Miscellaneous	9,890	27,500	27,500	27,500
46011 Liability Insurance	11,906	24,361	24,361	26,395
46014 Contractual cost reduction	(32)	-	-	-
Maintenance & Operation Total	\$ 1,804,522	\$ 5,533,004	\$ 5,533,004	\$ 5,081,658
Total	\$ 2,308,752	\$ 6,204,645	\$ 6,204,645	\$ 5,812,533

City of Glendale
Glendale Water & Power Department
Electric Works Revenue Fund - Business System Support
(5820-4521)

	Actual 2020-21	Adopted 2021-22	Revised 2021-22	Adopted 2022-23
Salaries & Benefits				
41100 Salaries	\$ 159,053	\$ 181,127	\$ 181,127	\$ 187,912
41200 Overtime	2,905	21,840	21,840	21,840
41300 Hourly wages	535	-	-	-
Various Benefits	34,366	36,638	36,638	44,540
42700 PERS retirement	57,550	69,265	69,265	74,326
42701 PERS cost sharing	(6,354)	(7,165)	(7,165)	(5,579)
Salaries & Benefits Total	\$ 248,055	\$ 301,705	\$ 301,705	\$ 323,039
Maintenance & Operation				
43110 Contractual services	\$ 1,868,535	\$ 2,666,688	\$ 2,666,688	\$ 2,666,076
44120 Repairs to office equipment	14,586	12,000	12,000	12,000
44450 Postage	78	750	750	750
44550 Travel	-	14,196	14,196	14,000
44650 Training	410	17,550	17,550	18,000
44800 Membership and dues	24	1,500	1,500	1,500
45150 Furniture and equipment	32,162	40,000	40,000	40,000
45170 Computer hardware	431	20,000	20,000	30,000
45250 Office supplies	637	3,000	3,000	3,000
45350 General supplies	18,346	14,000	14,000	14,000
45681 Business meetings	-	800	800	800
45682 Miscellaneous	-	10,000	10,000	15,000
46011 Liability Insurance	5,714	10,094	10,094	11,544
46014 Contractual cost reduction	(21)	-	-	-
Maintenance & Operation Total	\$ 1,940,901	\$ 2,810,578	\$ 2,810,578	\$ 2,826,670
Total	\$ 2,188,956	\$ 3,112,283	\$ 3,112,283	\$ 3,149,709

**City of Glendale
 Glendale Water & Power Department
 Electric Works Revenue Fund - Admin Utility Finance
 (5820-4530)**

	Actual 2020-21	Adopted 2021-22	Revised 2021-22	Adopted 2022-23
Salaries & Benefits				
41100 Salaries	\$ 289,429	\$ 388,406	\$ 388,406	\$ 405,493
Various Benefits	73,478	93,626	93,626	106,841
42700 PERS retirement	127,449	149,074	149,074	160,397
42701 PERS cost sharing	(11,418)	(15,414)	(15,414)	(12,031)
Salaries & Benefits Total	\$ 478,938	\$ 615,692	\$ 615,692	\$ 660,700
Maintenance & Operation				
44650 Training	\$ 1,670	\$ -	\$ -	\$ -
45150 Furniture and equipment	-	-	-	1,000
45350 General supplies	-	-	-	500
46011 Liability Insurance	10,177	19,304	19,304	22,303
Maintenance & Operation Total	\$ 11,847	\$ 19,304	\$ 19,304	\$ 23,803
Total	\$ 490,785	\$ 634,996	\$ 634,996	\$ 684,503

City of Glendale
Glendale Water & Power Department
Electric Works Revenue Fund - Admin Environmental & Safety
(5820-4540)

	Actual 2020-21	Adopted 2021-22	Revised 2021-22	Adopted 2022-23
Salaries & Benefits				
41100 Salaries	\$ 323,766	\$ 381,274	\$ 381,274	\$ 279,106
41300 Hourly wages	142	-	-	-
Various Benefits	51,719	63,314	63,314	37,984
42700 PERS retirement	136,202	145,609	145,609	109,864
42701 PERS cost sharing	(12,732)	(15,053)	(15,053)	(8,239)
Salaries & Benefits Total	\$ 499,097	\$ 575,144	\$ 575,144	\$ 418,715
Maintenance & Operation				
43110 Contractual services	\$ 1,944	\$ 199,800	\$ 199,800	\$ 134,800
44450 Postage	142	-	-	150
44650 Training	5,047	-	-	12,000
44760 Regulatory	8,781	25,000	25,000	25,000
44800 Membership and dues	768	1,500	1,500	1,500
45250 Office supplies	5	-	-	-
45350 General supplies	888	10,000	10,000	10,000
45681 Business meetings	224	500	500	500
45682 Miscellaneous	3,407	35,000	35,000	35,000
46011 Liability Insurance	11,425	18,949	18,949	15,350
Maintenance & Operation Total	\$ 32,629	\$ 290,749	\$ 290,749	\$ 234,300
Total	\$ 531,726	\$ 865,893	\$ 865,893	\$ 653,015

City of Glendale
Glendale Water & Power Department
Electric Works Revenue Fund - Admin UOC & Warehouse
(5820-4550)

	Actual 2020-21	Adopted 2021-22	Revised 2021-22	Adopted 2022-23
Salaries & Benefits				
41100 Salaries	\$ 191,358	\$ 203,974	\$ 203,974	\$ 212,604
41200 Overtime	13,582	7,800	7,800	7,800
41300 Hourly wages	8,588	30,316	30,316	32,440
Various Benefits	61,099	65,485	65,485	68,394
42700 PERS retirement	74,110	89,199	89,199	96,515
42701 PERS cost sharing	(7,911)	(9,222)	(9,222)	(7,238)
Salaries & Benefits Total	\$ 340,826	\$ 387,552	\$ 387,552	\$ 410,515
Maintenance & Operation				
43050 Repairs buildings and grounds	\$ 8,156	\$ 25,000	\$ 25,000	\$ -
43070 Lease payments	40,157	45,000	45,000	-
43110 Contractual services	168,815	194,317	194,317	270,875
44450 Postage	46	-	-	-
44600 Laundry and towel service	1,171	5,000	5,000	5,000
45150 Furniture and equipment	-	2,000	2,000	2,000
45250 Office supplies	2,181	4,000	4,000	4,000
45300 Small tools	1,007	1,000	1,000	-
45350 General supplies	(14,333)	30,000	30,000	30,000
45681 Business meetings	-	400	400	400
45682 Miscellaneous	-	5,000	5,000	5,000
46005 Utilities	325,291	341,700	341,700	338,904
46011 Liability Insurance	7,494	12,029	12,029	13,905
46014 Contractual cost reduction	(68)	-	-	-
Maintenance & Operation Total	\$ 539,918	\$ 665,446	\$ 665,446	\$ 670,084
Total	\$ 880,744	\$ 1,052,998	\$ 1,052,998	\$ 1,080,599

**City of Glendale
Glendale Water & Power Department
Electric Works Revenue Fund - GWP Admin Yard
(5820-4560)**

	Actual 2020-21	Adopted 2021-22	Revised 2021-22	Adopted 2022-23
Salaries & Benefits				
41100 Salaries	\$ 57,624	\$ 88,739	\$ 88,739	\$ 90,971
41200 Overtime	378	-	-	-
41300 Hourly wages	26,289	-	-	-
Various Benefits	21,269	33,153	33,153	38,022
42700 PERS retirement	40,053	33,788	33,788	35,826
42701 PERS cost sharing	(3,300)	(3,493)	(3,493)	(2,687)
Salaries & Benefits Total	\$ 142,313	\$ 152,187	\$ 152,187	\$ 162,132
Maintenance & Operation				
45250 Office supplies	\$ 6,150	\$ 12,000	\$ 12,000	\$ 12,000
45350 General supplies	62	-	-	-
45682 Miscellaneous	65	-	-	-
46011 Liability Insurance	2,959	4,410	4,410	5,003
46014 Contractual cost reduction	(158)	-	-	-
Maintenance & Operation Total	\$ 9,079	\$ 16,410	\$ 16,410	\$ 17,003
Total	\$ 151,391	\$ 168,597	\$ 168,597	\$ 179,135

City of Glendale
Glendale Water & Power Department
Electric Works Revenue Fund - Electric Engineering
(5820-4600)

	Actual 2020-21	Adopted 2021-22	Revised 2021-22	Adopted 2022-23
Salaries & Benefits				
41100 Salaries	\$ 1,717,964	\$ 2,395,454	\$ 2,395,454	\$ 2,444,140
41200 Overtime	26,049	140,000	140,000	140,000
41300 Hourly wages	85,461	88,356	88,356	372,155
Various Benefits	261,977	345,715	345,715	410,976
42700 PERS retirement	720,280	944,150	944,150	1,121,975
42701 PERS cost sharing	(69,062)	(97,621)	(97,621)	(84,155)
42799 Salary charges in (out)	-	(900,539)	(900,539)	(500,000)
Salaries & Benefits Total	\$ 2,742,669	\$ 2,915,515	\$ 2,915,515	\$ 3,905,091
Maintenance & Operation				
43110 Contractual services	\$ 53,012	\$ 1,099,000	\$ 1,099,000	\$ 1,234,000
44650 Training	2,703	9,844	9,844	9,844
44760 Regulatory	559	-	-	-
44800 Membership and dues	115	-	-	-
45100 Books	361	-	-	-
45150 Furniture and equipment	419	2,500	2,500	2,500
45250 Office supplies	5,142	20,000	20,000	20,000
45350 General supplies	18,639	10,000	10,000	10,000
45681 Business meetings	-	2,500	2,500	2,500
45682 Miscellaneous	90,878	95,000	95,000	95,000
46005 Utilities	9,490	3,708	3,708	80,394
46009 ITD service charge	-	-	-	89,925
46011 Liability Insurance	64,336	130,417	130,417	162,610
46014 Contractual cost reduction	(39)	-	-	-
Maintenance & Operation Total	\$ 245,617	\$ 1,372,969	\$ 1,372,969	\$ 1,706,773
Total	\$ 2,988,287	\$ 4,288,484	\$ 4,288,484	\$ 5,611,864

**City of Glendale
 Glendale Water & Power Department
 Electric Works Revenue Fund - Electric Customer Support
 (5820-4610)**

	Actual 2020-21	Adopted 2021-22	Revised 2021-22	Adopted 2022-23
Salaries & Benefits				
41100 Salaries	\$ 663,969	\$ 706,796	\$ 706,796	\$ 736,127
41200 Overtime	358,868	-	-	-
Various Benefits	131,160	116,024	116,024	149,702
42700 PERS retirement	236,936	269,399	269,399	290,254
42701 PERS cost sharing	(26,138)	(27,856)	(27,856)	(21,771)
42799 Salary charges in (out)	-	(111,288)	(111,288)	(100,000)
Salaries & Benefits Total	\$ 1,364,795	\$ 953,075	\$ 953,075	\$ 1,054,312
Maintenance & Operation				
45350 General supplies	\$ -	\$ 5,000	\$ 5,000	\$ -
46011 Liability Insurance	35,889	35,132	35,132	40,490
Maintenance & Operation Total	\$ 35,889	\$ 40,132	\$ 40,132	\$ 40,490
Total	\$ 1,400,684	\$ 993,207	\$ 993,207	\$ 1,094,802

City of Glendale
Glendale Water & Power Department
Electric Works Revenue Fund - Electric Street Light
(5820-4620)

	Actual 2020-21	Adopted 2021-22	Revised 2021-22	Adopted 2022-23
Salaries & Benefits				
41100 Salaries	\$ 231,155	\$ 273,286	\$ 273,286	\$ 245,189
41200 Overtime	35,704	100,000	100,000	100,000
Various Benefits	66,583	80,057	80,057	76,491
42700 PERS retirement	81,835	104,690	104,690	96,997
42701 PERS cost sharing	(6,773)	(8,118)	(8,118)	(7,276)
42799 Salary charges in (out)	-	(150,943)	(150,943)	(150,000)
Salaries & Benefits Total	\$ 408,505	\$ 398,972	\$ 398,972	\$ 361,401
Maintenance & Operation				
43050 Repairs buildings and grounds	\$ -	\$ 5,000	\$ 5,000	\$ 5,000
45300 Small tools	513	2,000	2,000	2,000
45350 General supplies	238,944	150,000	150,000	150,000
45681 Business meetings	-	1,000	1,000	1,000
46005 Utilities	8,295	10,140	10,140	5,078
46011 Liability Insurance	9,358	18,554	18,554	18,986
Maintenance & Operation Total	\$ 257,111	\$ 186,694	\$ 186,694	\$ 182,064
Total	\$ 665,616	\$ 585,666	\$ 585,666	\$ 543,465

City of Glendale
Glendale Water & Power Department
Electric Works Revenue Fund - Electric Howard Substation
(5820-4630)

	Actual 2020-21	Adopted 2021-22	Revised 2021-22	Adopted 2022-23
Salaries & Benefits				
41100 Salaries	\$ 1,116,173	\$ 1,228,396	\$ 1,228,396	\$ 1,264,629
41200 Overtime	497,708	499,223	499,223	575,003
Various Benefits	226,710	241,805	241,805	266,257
42700 PERS retirement	451,759	498,229	498,229	528,785
42701 PERS cost sharing	(37,962)	(40,203)	(40,203)	(39,664)
Salaries & Benefits Total	\$ 2,254,388	\$ 2,427,450	\$ 2,427,450	\$ 2,595,010
Maintenance & Operation				
44300 Telephone	\$ 15,888	\$ 25,000	\$ 25,000	\$ 25,000
44550 Travel	-	5,000	5,000	2,000
44650 Training	-	15,000	15,000	15,000
45150 Furniture and equipment	841	-	-	5,000
45170 Computer hardware	-	2,000	2,000	2,000
45250 Office supplies	1,686	2,000	2,000	6,000
45350 General supplies	1,522	5,000	5,000	10,000
45681 Business meetings	-	500	500	500
46005 Utilities	177,921	181,245	181,245	157,186
46011 Liability Insurance	56,843	85,867	85,867	101,183
46014 Contractual cost reduction	(4)	-	-	-
Maintenance & Operation Total	\$ 254,696	\$ 321,612	\$ 321,612	\$ 323,869
Total	\$ 2,509,085	\$ 2,749,062	\$ 2,749,062	\$ 2,918,879

City of Glendale
Glendale Water & Power Department
Electric Works Revenue Fund - Electric Meter & Test Shop
(5820-4640)

	Actual 2020-21	Adopted 2021-22	Revised 2021-22	Adopted 2022-23
Salaries & Benefits				
41100 Salaries	\$ 1,278,982	\$ 1,348,423	\$ 1,348,423	\$ 1,344,622
41200 Overtime	86,512	105,000	105,000	105,000
41300 Hourly wages	-	-	-	355,265
Various Benefits	217,932	221,926	221,926	273,376
42700 PERS retirement	442,654	478,058	478,058	633,725
42701 PERS cost sharing	(36,840)	(38,338)	(38,338)	(47,534)
42799 Salary charges in (out)	-	(227,981)	(227,981)	(100,000)
Salaries & Benefits Total	\$ 1,989,239	\$ 1,887,088	\$ 1,887,088	\$ 2,564,454
Maintenance & Operation				
43110 Contractual services	\$ 6,095	\$ 39,500	\$ 39,500	\$ 46,500
44120 Repairs to office equipment	-	2,000	2,000	2,000
44650 Training	1,088	5,877	5,877	5,800
45300 Small tools	7,194	-	-	-
45350 General supplies	49,993	50,000	50,000	60,000
46011 Liability Insurance	47,948	67,216	67,216	99,276
46014 Contractual cost reduction	(78)	-	-	-
Maintenance & Operation Total	\$ 112,240	\$ 164,593	\$ 164,593	\$ 213,576
Total	\$ 2,101,479	\$ 2,051,681	\$ 2,051,681	\$ 2,778,030

**City of Glendale
Glendale Water & Power Department
Electric Works Revenue Fund - Electric Station Maintenance
(5820-4650)**

	Actual 2020-21	Adopted 2021-22	Revised 2021-22	Adopted 2022-23
Salaries & Benefits				
41100 Salaries	\$ 1,911,970	\$ 2,232,508	\$ 2,232,508	\$ 2,201,979
41200 Overtime	337,062	200,000	200,000	300,000
Various Benefits	341,199	379,726	379,726	443,262
42700 PERS retirement	710,932	783,096	783,096	802,941
42701 PERS cost sharing	(54,813)	(63,669)	(63,669)	(60,227)
42799 Salary charges in (out)	-	(667,430)	(667,430)	(100,000)
Salaries & Benefits Total	\$ 3,246,350	\$ 2,864,231	\$ 2,864,231	\$ 3,587,955
Maintenance & Operation				
43050 Repairs buildings and grounds	\$ 990	\$ -	\$ -	\$ -
43110 Contractual services	828,386	1,403,000	1,403,000	1,580,000
44100 Repairs to equipment	5,516	10,000	10,000	10,000
44450 Postage	130	-	-	-
44600 Laundry and towel service	67	-	-	-
44650 Training	1,588	2,895	2,895	2,895
44760 Regulatory	-	8,000	8,000	8,000
45100 Books	132	-	-	-
45250 Office supplies	1,173	-	-	-
45300 Small tools	15,895	-	-	-
45350 General supplies	94,081	140,000	140,000	140,000
46011 Liability Insurance	78,994	111,482	111,482	137,619
46014 Contractual cost reduction	(87)	-	-	-
Maintenance & Operation Total	\$ 1,026,866	\$ 1,675,377	\$ 1,675,377	\$ 1,878,514
Total	\$ 4,273,215	\$ 4,539,608	\$ 4,539,608	\$ 5,466,469

City of Glendale
Glendale Water & Power Department
Electric Works Revenue Fund - Electric OH & UG
(5820-4660)

	Actual 2020-21	Adopted 2021-22	Revised 2021-22	Adopted 2022-23
Salaries & Benefits				
41100 Salaries	\$ 3,578,877	\$ 4,649,861	\$ 4,649,861	\$ 5,288,701
41200 Overtime	1,209,733	900,000	900,000	150,000
41300 Hourly wages	27,407	860,455	860,455	860,458
Various Benefits	606,611	766,972	766,972	962,907
42700 PERS retirement	1,344,460	1,652,318	1,652,318	2,309,345
42701 PERS cost sharing	(108,032)	(137,442)	(137,442)	(173,225)
42799 Salary charges in (out)	-	(1,821,372)	(1,821,372)	(1,000,000)
Salaries & Benefits Total	\$ 6,659,056	\$ 6,870,792	\$ 6,870,792	\$ 8,398,186
Maintenance & Operation				
43050 Repairs buildings and grounds	\$ 3,553	\$ 2,000	\$ 2,000	\$ 2,000
43110 Contractual services	2,146,794	3,709,800	3,709,800	3,759,800
44100 Repairs to equipment	652	-	-	-
44120 Repairs to office equipment	-	7,500	7,500	7,500
44450 Postage	41	1,000	1,000	1,000
44600 Laundry and towel service	102	-	-	-
44650 Training	11,096	2,895	2,895	2,895
44760 Regulatory	6,157	-	-	-
44800 Membership and dues	18,914	10,000	10,000	10,000
45150 Furniture and equipment	533	-	-	-
45250 Office supplies	1,036	-	-	-
45300 Small tools	44,683	50,000	50,000	50,000
45350 General supplies	1,186,261	800,000	800,000	850,000
45681 Business meetings	409	-	-	-
46009 ITD service charge	-	-	-	159,411
46011 Liability Insurance	169,267	301,647	301,647	346,471
Maintenance & Operation Total	\$ 3,589,496	\$ 4,884,842	\$ 4,884,842	\$ 5,189,077
Total	\$ 10,248,553	\$ 11,755,634	\$ 11,755,634	\$ 13,587,263

City of Glendale
Glendale Water & Power Department
Electric Works Revenue Fund - Electric Substructure
(5820-4670)

	Actual 2020-21	Adopted 2021-22	Revised 2021-22	Adopted 2022-23
Salaries & Benefits				
41100 Salaries	\$ 328,769	\$ 487,188	\$ 487,188	\$ 510,425
41200 Overtime	34,817	150,000	150,000	1,200,000
Various Benefits	79,551	122,943	122,943	202,844
42700 PERS retirement	132,672	186,408	186,408	202,013
42701 PERS cost sharing	(10,240)	(14,998)	(14,998)	(15,153)
42799 Salary charges in (out)	-	(264,865)	(264,865)	(100,000)
Salaries & Benefits Total	\$ 565,569	\$ 666,676	\$ 666,676	\$ 2,000,129
Maintenance & Operation				
43110 Contractual services	\$ 94,193	\$ 50,000	\$ 50,000	\$ 100,000
44650 Training	176	-	-	-
45300 Small tools	5,201	5,000	5,000	5,000
45350 General supplies	159,507	50,000	50,000	50,000
46011 Liability Insurance	12,759	31,672	31,672	94,077
Maintenance & Operation Total	\$ 271,836	\$ 136,672	\$ 136,672	\$ 249,077
Total	\$ 837,405	\$ 803,348	\$ 803,348	\$ 2,249,206

City of Glendale
Glendale Water & Power Department
Electric Works Revenue Fund - Power Management
(5820-4680)

	Actual 2020-21	Adopted 2021-22	Revised 2021-22	Adopted 2022-23
Salaries & Benefits				
41100 Salaries	\$ 1,255,651	\$ 1,435,800	\$ 1,435,800	\$ 1,592,087
41200 Overtime	1,500	-	-	-
41300 Hourly wages	11,060	-	-	-
Various Benefits	190,370	206,474	206,474	237,209
42700 PERS retirement	518,863	551,456	551,456	633,360
42701 PERS cost sharing	(50,423)	(57,015)	(57,015)	(47,507)
Salaries & Benefits Total	\$ 1,927,020	\$ 2,136,715	\$ 2,136,715	\$ 2,415,149
Maintenance & Operation				
43110 Contractual services	\$ 3,984,132	\$ 3,087,220	\$ 3,087,220	\$ 3,290,820
44450 Postage	137	1,000	1,000	1,000
44550 Travel	-	35,000	35,000	12,000
44650 Training	1,719	22,000	22,000	12,000
44760 Regulatory	115,707	130,000	130,000	130,000
44761 RAC variance	(134,530)	-	-	-
44800 Membership and dues	70,731	70,000	70,000	75,000
45050 Periodicals and newspapers	-	2,500	2,500	1,000
45150 Furniture and equipment	-	-	-	500
45250 Office supplies	-	3,000	3,000	1,500
45350 General supplies	114	-	-	1,000
45502 Fuel natural gas	15,615,512	16,500,000	16,500,000	33,633,400
45506 Carbon allowances	(120)	3,800,000	3,800,000	6,046,961
45507 Renewable energy credits	3,560,118	30,000	30,000	700,000
45509 ECAC variance	(18,782,851)	-	-	-
45510 Purchased power	98,539,085	121,476,000	121,476,000	125,656,768
45511 Hedging costs	(126,381)	800,000	800,000	-
45681 Business meetings	-	1,500	1,500	1,500
45682 Miscellaneous	258	500	500	500
46001 Gas depletion	792,102	1,000,000	1,000,000	1,000,000
46005 Utilities	2,044	2,108	2,108	2,011
46011 Liability Insurance	44,628	71,365	71,365	87,569
46014 Contractual cost reduction	(22,230)	-	-	-
Maintenance & Operation Total	\$ 103,660,173	\$ 147,032,193	\$ 147,032,193	\$ 170,653,529
Total	\$ 105,587,193	\$ 149,168,908	\$ 149,168,908	\$ 173,068,678

**City of Glendale
Glendale Water & Power Department
Electric Works Revenue Fund - Power Plant
(5820-4690)**

	Actual 2020-21	Adopted 2021-22	Revised 2021-22	Adopted 2022-23
Salaries & Benefits				
41100 Salaries	\$ 3,063,147	\$ 4,235,643	\$ 4,266,506	\$ 4,046,458
41200 Overtime	1,649,032	1,079,823	1,079,823	1,379,486
41300 Hourly wages	2,398	22,620	22,620	30,000
Various Benefits	719,233	934,328	934,328	1,011,189
42700 PERS retirement	1,460,937	1,659,740	1,659,740	1,638,248
42701 PERS cost sharing	(110,583)	(142,342)	(117,425)	(122,884)
Salaries & Benefits Total	\$ 6,784,164	\$ 7,789,812	\$ 7,845,592	\$ 7,982,497
Maintenance & Operation				
43050 Repairs buildings and grounds	\$ 5,157	\$ -	\$ -	\$ -
43070 Lease payments	1,700	-	-	-
43110 Contractual services	1,340,886	1,771,500	1,771,500	1,844,000
44100 Repairs to equipment	33,349	50,000	50,000	50,000
44450 Postage	242	-	-	-
44550 Travel	-	5,000	5,000	5,000
44600 Laundry and towel service	7,581	7,000	7,000	7,000
44650 Training	875	10,000	10,000	10,000
44700 Computer software	22,124	-	-	-
44760 Regulatory	99,386	100,000	100,000	100,000
45250 Office supplies	4,731	5,000	5,000	5,000
45350 General supplies	675,486	620,000	620,000	620,000
45682 Miscellaneous	28	-	-	-
46005 Utilities	2,077,274	2,031,619	2,031,619	2,080,774
46011 Liability Insurance	165,733	265,316	265,316	300,093
46014 Contractual cost reduction	(5,839)	-	-	-
Maintenance & Operation Total	\$ 4,428,712	\$ 4,865,435	\$ 4,865,435	\$ 5,021,867
Total	\$ 11,212,876	\$ 12,655,247	\$ 12,711,027	\$ 13,004,364

**City of Glendale
Glendale Water & Power Department
Electric Depreciation Fund - Projects
(5830-0020)**

	Actual 2020-21	Adopted 2021-22	Revised 2021-22	Adopted 2022-23
Salaries & Benefits				
41100 Salaries	\$ 726,374	\$ -	\$ -	\$ -
41200 Overtime	461,624	-	-	-
41300 Hourly wages	5,635	-	-	-
Various Benefits	113,675	-	-	-
42700 PERS retirement	265,680	-	-	-
42701 PERS cost sharing	(25,129)	-	-	-
Salaries & Benefits Total	\$ 1,547,859	\$ -	\$ -	\$ -
Maintenance & Operation				
43110 Contractual services	\$ 1,986,808	\$ 2,269,700	\$ 6,419,700	\$ 33,800,000
45350 General supplies	443,426	-	-	-
46011 Liability Insurance	41,799	-	-	-
46014 Contractual cost reduction	(12,156)	-	-	-
Maintenance & Operation Total	\$ 2,459,876	\$ 2,269,700	\$ 6,419,700	\$ 33,800,000
Capital Outlay				
51000 Capital outlay	\$ 532,284	\$ 1,045,580	\$ 3,145,580	\$ -
Capital Outlay Total	\$ 532,284	\$ 1,045,580	\$ 3,145,580	\$ -
Capital Improvement				
51200 Other improvements	\$ 1,863,318	\$ 894,900	\$ 894,900	\$ 150,000
51250 Equipment	41,884	719,500	469,500	1,350,000
52100 Construction	16,898	-	-	-
53300 Other expenditures	1,495,002	6,995,000	3,095,000	13,115,000
59999 Asset capitalization	(7,947,730)	-	-	-
Capital Improvement Total	\$ (4,530,629)	\$ 8,609,400	\$ 4,459,400	\$ 14,615,000
Total	\$ 9,390	\$ 11,924,680	\$ 14,024,680	\$ 48,415,000

**City of Glendale
 Glendale Water & Power Department
 Electric Depreciation Fund - Administration
 (5830-4505)**

	Actual 2020-21	Adopted 2021-22	Revised 2021-22	Adopted 2022-23
Capital Outlay				
51000 Capital outlay	\$ -	\$ -	\$ -	\$ 340,560
Capital Outlay Total	\$ -	\$ -	\$ -	\$ 340,560
Total	\$ -	\$ -	\$ -	\$ 340,560

City of Glendale
Glendale Water & Power Department
Electric Depreciation Fund - Electric Engineering
(5830-4600)

	Actual 2020-21	Adopted 2021-22	Revised 2021-22	Adopted 2022-23
Capital Outlay				
51000 Capital outlay	\$ -	\$ -	\$ -	\$ 2,869,000
Capital Outlay Total	\$ -	\$ -	\$ -	\$ 2,869,000
Total	\$ -	\$ -	\$ -	\$ 2,869,000

**City of Glendale
 Glendale Water & Power Department
 Electric Depreciation Fund - Power Plant
 (5830-4690)**

	Actual 2020-21	Adopted 2021-22	Revised 2021-22	Adopted 2022-23
Capital Outlay				
51000 Capital outlay	\$ -	\$ -	\$ -	\$ 250,000
Capital Outlay Total	\$ -	\$ -	\$ -	\$ 250,000
Total	\$ -	\$ -	\$ -	\$ 250,000

**City of Glendale
Glendale Water & Power Department
Electric Customer Paid Capital Fund - Projects
(5850-0020)**

	Actual 2020-21	Adopted 2021-22	Revised 2021-22	Adopted 2022-23
Salaries & Benefits				
41100 Salaries	\$ 200,336	\$ -	\$ -	-
41200 Overtime	119,186	-	-	-
41300 Hourly wages	1,830	-	-	-
Various Benefits	37,036	-	-	-
42700 PERS retirement	73,709	-	-	-
42701 PERS cost sharing	(6,636)	-	-	-
Salaries & Benefits Total	\$ 425,463	\$ -	\$ -	-
Maintenance & Operation				
45350 General supplies	\$ 54,202	\$ -	\$ -	-
46011 Liability Insurance	11,267	-	-	-
Maintenance & Operation Total	\$ 65,469	\$ -	\$ -	-
Capital Improvement				
51200 Other improvements	\$ -	\$ 2,000,000	\$ 2,000,000	\$ 2,000,000
53300 Other expenditures	169,216	-	-	-
59999 Asset capitalization	(660,148)	-	-	-
Capital Improvement Total	\$ (490,932)	\$ 2,000,000	\$ 2,000,000	\$ 2,000,000
Total	\$ -	\$ 2,000,000	\$ 2,000,000	\$ 2,000,000

**City of Glendale
 Glendale Water & Power Department
 Energy Cost Adjustment Charge Fund - Power Management
 (5860-4680)**

	Actual 2020-21	Adopted 2021-22	Revised 2021-22	Adopted 2022-23
Maintenance & Operation				
45509 ECAC variance	\$ 18,782,851	\$ -	\$ -	\$ -
Maintenance & Operation Total	\$ 18,782,851	\$ -	\$ -	\$ -
Total	\$ 18,782,851	\$ -	\$ -	\$ -

**City of Glendale
 Glendale Water & Power Department
 Regulatory Adjustment Trust Fund - Power Management
 (5870-4680)**

	Actual 2020-21	Adopted 2021-22	Revised 2021-22	Adopted 2022-23
Maintenance & Operation				
44761 RAC variance	\$ 134,530	\$ -	\$ -	\$ -
Maintenance & Operation Total	\$ 134,530	\$ -	\$ -	\$ -
Total	\$ 134,530	\$ -	\$ -	\$ -

**City of Glendale
 Glendale Water & Power Department
 Electric Customer Repair Fund - Projects
 (5880-0020)**

	Actual 2020-21	Adopted 2021-22	Revised 2021-22	Adopted 2022-23
Maintenance & Operation				
45350 General supplies	\$ -	\$ 50,000	\$ 50,000	\$ 50,000
Maintenance & Operation Total	\$ -	\$ 50,000	\$ 50,000	\$ 50,000
Total	\$ -	\$ 50,000	\$ 50,000	\$ 50,000

**City of Glendale
 Glendale Water & Power Department
 Water Works Revenue Fund - Projects
 (5920-0020)**

	Actual 2020-21	Adopted 2021-22	Revised 2021-22	Adopted 2022-23
Maintenance & Operation				
43113 Direct Assist - Domestic	\$ -	\$ -	\$ 760,260	\$ -
43114 Direct Assist - Commercial	-	-	190,009	-
45350 General supplies	5,639	-	-	-
Maintenance & Operation Total	\$ 5,639	\$ -	\$ 950,269	\$ -
Total	\$ 5,639	\$ -	\$ 950,269	\$ -

City of Glendale
Glendale Water & Power Department
Water Works Revenue Fund - Administration
(5920-4505)

	Actual 2020-21	Adopted 2021-22	Revised 2021-22	Adopted 2022-23
Salaries & Benefits				
41100 Salaries	\$ 149,199	\$ 179,948	\$ 179,948	\$ 177,819
41200 Overtime	288	-	-	-
41300 Hourly wages	840	-	-	-
Various Benefits	42,006	35,866	35,866	43,754
42700 PERS retirement	517,572	68,939	68,939	70,120
42701 PERS cost sharing	(5,916)	(7,132)	(7,132)	(5,262)
Salaries & Benefits Total	\$ 703,989	\$ 277,621	\$ 277,621	\$ 286,431
Maintenance & Operation				
43110 Contractual services	\$ 288,413	\$ 179,500	\$ 179,500	\$ 86,781
44450 Postage	-	250	250	250
44550 Travel	-	-	-	500
44650 Training	447	-	-	500
44700 Computer software	446	-	-	-
44760 Regulatory	-	-	-	2,000
44800 Membership and dues	79	4,500	4,500	6,000
45050 Periodicals and newspapers	21	-	-	-
45150 Furniture and equipment	-	16,000	16,000	16,000
45170 Computer hardware	-	400	400	400
45250 Office supplies	509	3,500	3,500	3,500
45350 General supplies	1,540	2,500	2,500	2,500
45680 Uncollectible accounts	-	3,000	3,000	3,000
45681 Business meetings	179	1,500	1,500	1,500
45682 Miscellaneous	460	5,000	5,000	14,900
46000 Depreciation	6,727,501	7,382,361	7,382,361	7,468,212
46002 Amortization expense	20,933	18,723	18,723	10,444
46005 Utilities	11,785	15,647	15,647	22,520
46007 Cost allocation charge	3,875,918	3,910,955	3,910,955	3,614,032
46008 Fleet equipment rental charge	530,807	530,807	530,807	530,801
46009 ITD service charge	843,860	926,100	926,100	943,561
46010 Building maint service charge	299,140	341,407	341,407	332,345
46011 Liability Insurance	5,284	8,953	8,953	9,788
46012 Excess insurance and surety	74,759	128,700	128,700	128,700
46014 Contractual cost reduction	(32)	-	-	-
47050 Interest on bonds	1,929,312	2,100,000	2,100,000	2,015,000
47060 Costs of issuance of debt	430,864	-	-	-
Maintenance & Operation Total	\$ 15,042,224	\$ 15,579,803	\$ 15,579,803	\$ 15,213,234
Total	\$ 15,746,213	\$ 15,857,424	\$ 15,857,424	\$ 15,499,665

City of Glendale
Glendale Water & Power Department
Water Works Revenue Fund - Admin Customer Service
(5920-4509)

	Actual 2020-21	Adopted 2021-22	Revised 2021-22	Adopted 2022-23
Salaries & Benefits				
41100 Salaries	\$ 770,849	\$ 869,562	\$ 899,995	\$ 863,867
41200 Overtime	11,491	14,228	14,228	13,748
41300 Hourly wages	6,403	9,200	9,200	21,900
Various Benefits	169,383	193,670	206,309	229,165
42700 PERS retirement	307,240	334,519	334,519	349,572
42701 PERS cost sharing	(30,656)	(34,620)	(28,750)	(26,241)
Salaries & Benefits Total	\$ 1,234,710	\$ 1,386,559	\$ 1,435,501	\$ 1,452,011
Maintenance & Operation				
43110 Contractual services	\$ 389,389	\$ 505,752	\$ 505,752	\$ 524,736
44450 Postage	1,602	4,000	4,000	4,000
44550 Travel	-	2,448	2,448	2,448
44650 Training	1,078	3,168	3,168	3,168
44760 Regulatory	1,812	-	-	-
44800 Membership and dues	-	200	200	200
45150 Furniture and equipment	162	2,500	2,500	2,500
45170 Computer hardware	(355)	-	-	-
45250 Office supplies	570	4,000	4,000	4,000
45300 Small tools	290	-	-	-
45350 General supplies	-	1,000	1,000	1,000
45652 Claims	25	-	-	-
45680 Uncollectible accounts	70,516	70,000	70,000	190,334
45681 Business meetings	-	500	500	500
45682 Miscellaneous	505	500	500	500
46007 Cost allocation charge	187,510	194,616	194,616	189,682
46008 Fleet equipment rental charge	10,267	10,267	10,267	9,410
46009 ITD service charge	182,967	200,798	200,798	204,584
46010 Building maint service charge	94,965	107,813	107,813	104,951
46011 Liability Insurance	27,717	44,436	44,436	49,508
46014 Contractual cost reduction	(10)	-	-	-
Maintenance & Operation Total	\$ 969,008	\$ 1,151,998	\$ 1,151,998	\$ 1,291,521
Total	\$ 2,203,718	\$ 2,538,557	\$ 2,587,499	\$ 2,743,532

City of Glendale
Glendale Water & Power Department
Water Works Revenue Fund - Admin Consv & Utility Mod
(5920-4520)

	Actual 2020-21	Adopted 2021-22	Revised 2021-22	Adopted 2022-23
Salaries & Benefits				
41100 Salaries	\$ 131,741	\$ 97,301	\$ 97,301	\$ 102,128
41200 Overtime	555	-	-	-
Various Benefits	22,718	15,865	15,865	18,908
42700 PERS retirement	47,472	37,135	37,135	40,325
42701 PERS cost sharing	(5,222)	(3,841)	(3,841)	(3,026)
Salaries & Benefits Total	\$ 197,264	\$ 146,460	\$ 146,460	\$ 158,335
Maintenance & Operation				
43110 Contractual services	\$ 148,986	\$ 266,920	\$ 266,920	\$ 271,000
44200 Advertising	1,247	3,200	3,200	17,000
44450 Postage	8	10,000	10,000	10,000
44550 Travel	-	500	500	1,650
44650 Training	506	1,000	1,000	1,650
44800 Membership and dues	2,462	3,000	3,000	4,500
45150 Furniture and equipment	-	1,000	1,000	1,000
45250 Office supplies	238	1,000	1,000	1,000
45350 General supplies	676	5,000	5,000	1,000
45450 Printing and graphics	-	12,000	12,000	12,000
45681 Business meetings	-	200	200	1,000
45682 Miscellaneous	2,790	7,500	7,500	7,500
46011 Liability Insurance	4,654	4,842	4,842	5,622
46014 Contractual cost reduction	(2)	-	-	-
Maintenance & Operation Total	\$ 161,563	\$ 316,162	\$ 316,162	\$ 334,922
Total	\$ 358,827	\$ 462,622	\$ 462,622	\$ 493,257

City of Glendale
Glendale Water & Power Department
Water Works Revenue Fund - Business System Support
(5920-4521)

	Actual 2020-21	Adopted 2021-22	Revised 2021-22	Adopted 2022-23
Salaries & Benefits				
41100 Salaries	\$ 39,763	\$ 45,292	\$ 45,292	\$ 46,985
41200 Overtime	726	6,160	6,160	6,160
41300 Hourly wages	105	-	-	-
Various Benefits	8,679	9,252	9,252	11,232
42700 PERS retirement	14,388	17,327	17,327	18,589
42701 PERS cost sharing	(1,588)	(1,797)	(1,797)	(1,399)
Salaries & Benefits Total	\$ 62,073	\$ 76,234	\$ 76,234	\$ 81,567
Maintenance & Operation				
43110 Contractual services	\$ 409,898	\$ 661,716	\$ 661,716	\$ 702,194
44120 Repairs to office equipment	4,114	3,500	3,500	3,500
44450 Postage	181	250	250	250
44550 Travel	-	4,004	4,004	4,000
44650 Training	116	4,950	4,950	5,000
44800 Membership and dues	7	500	500	500
45150 Furniture and equipment	9,071	10,000	10,000	12,000
45170 Computer hardware	122	5,000	5,000	10,000
45250 Office supplies	174	1,000	1,000	1,000
45350 General supplies	4,356	2,000	2,000	3,000
45681 Business meetings	-	250	250	250
45682 Miscellaneous	-	2,000	2,000	5,000
46011 Liability Insurance	1,427	2,567	2,567	2,930
Maintenance & Operation Total	\$ 429,465	\$ 697,737	\$ 697,737	\$ 749,624
Total	\$ 491,538	\$ 773,971	\$ 773,971	\$ 831,191

City of Glendale
Glendale Water & Power Department
Water Works Revenue Fund - Admin Utility Finance
(5920-4530)

	Actual 2020-21	Adopted 2021-22	Revised 2021-22	Adopted 2022-23
Salaries & Benefits				
41100 Salaries	\$ 80,830	\$ 108,148	\$ 108,148	\$ 112,914
Various Benefits	20,591	26,234	26,234	29,927
42700 PERS retirement	35,659	41,511	41,511	44,664
42701 PERS cost sharing	(3,189)	(4,294)	(4,294)	(3,354)
Salaries & Benefits Total	\$ 133,892	\$ 171,599	\$ 171,599	\$ 184,151
Maintenance & Operation				
45150 Furniture and equipment	\$ -	\$ -	\$ -	\$ 250
45350 General supplies	-	-	-	250
46011 Liability Insurance	2,842	5,379	5,379	6,213
Maintenance & Operation Total	\$ 2,842	\$ 5,379	\$ 5,379	\$ 6,713
Total	\$ 136,734	\$ 176,978	\$ 176,978	\$ 190,864

City of Glendale
Glendale Water & Power Department
Water Works Revenue Fund - Admin Environmental & Safety
(5920-4540)

	Actual 2020-21	Adopted 2021-22	Revised 2021-22	Adopted 2022-23
Salaries & Benefits				
41100 Salaries	\$ 91,319	\$ 107,544	\$ 107,544	\$ 78,725
Various Benefits	14,581	17,916	17,916	10,741
42700 PERS retirement	38,402	41,076	41,076	30,989
42701 PERS cost sharing	(3,590)	(4,249)	(4,249)	(2,326)
Salaries & Benefits Total	\$ 140,712	\$ 162,287	\$ 162,287	\$ 118,129
Maintenance & Operation				
43110 Contractual services	\$ -	\$ 35,200	\$ 35,200	\$ 35,200
44450 Postage	39	-	-	50
44650 Training	213	-	-	4,000
44760 Regulatory	577	10,000	10,000	10,000
44800 Membership and dues	310	500	500	500
45350 General supplies	250	7,000	7,000	7,000
45681 Business meetings	-	250	250	250
45682 Miscellaneous	-	5,000	5,000	5,000
46011 Liability Insurance	3,221	5,347	5,347	4,332
Maintenance & Operation Total	\$ 4,609	\$ 63,297	\$ 63,297	\$ 66,332
Total	\$ 145,321	\$ 225,584	\$ 225,584	\$ 184,461

City of Glendale
Glendale Water & Power Department
Water Works Revenue Fund - Admin UOC & Warehouse
(5920-4550)

	Actual 2020-21	Adopted 2021-22	Revised 2021-22	Adopted 2022-23
Salaries & Benefits				
41100 Salaries	\$ 53,973	\$ 57,535	\$ 57,535	\$ 59,970
41200 Overtime	3,831	2,200	2,200	2,200
41300 Hourly wages	2,510	8,561	8,561	9,160
Various Benefits	17,301	18,563	18,563	19,335
42700 PERS retirement	20,935	25,167	25,167	27,233
42701 PERS cost sharing	(2,235)	(2,604)	(2,604)	(2,045)
Salaries & Benefits Total	\$ 96,314	\$ 109,422	\$ 109,422	\$ 115,853
Maintenance & Operation				
43050 Repairs buildings and grounds	\$ 2,322	\$ 5,000	\$ 5,000	\$ -
43070 Lease payments	11,326	12,000	12,000	-
43110 Contractual services	48,172	68,484	68,484	76,401
44450 Postage	6	-	-	-
44600 Laundry and towel service	330	2,000	2,000	2,000
45150 Furniture and equipment	-	650	650	650
45250 Office supplies	525	1,000	1,000	1,000
45300 Small tools	284	250	250	-
45350 General supplies	(6,714)	10,000	10,000	10,000
45681 Business meetings	-	150	150	150
45682 Miscellaneous	-	2,000	2,000	2,000
46005 Utilities	91,749	96,377	96,377	95,589
46011 Liability Insurance	2,117	3,400	3,400	3,927
46014 Contractual cost reduction	(7)	-	-	-
Maintenance & Operation Total	\$ 150,110	\$ 201,311	\$ 201,311	\$ 191,717
Total	\$ 246,424	\$ 310,733	\$ 310,733	\$ 307,570

**City of Glendale
Glendale Water & Power Department
Water Works Revenue Fund - Admin Yard
(5920-4560)**

	Actual 2020-21	Adopted 2021-22	Revised 2021-22	Adopted 2022-23
Salaries & Benefits				
41100 Salaries	\$ 16,253	\$ 25,031	\$ 25,031	\$ 25,659
41200 Overtime	107	-	-	-
41300 Hourly wages	7,414	31,446	31,446	32,677
Various Benefits	5,979	9,209	9,209	10,386
42700 PERS retirement	11,297	21,703	21,703	23,179
42701 PERS cost sharing	(931)	(2,245)	(2,245)	(1,741)
Salaries & Benefits Total	\$ 40,119	\$ 85,144	\$ 85,144	\$ 90,160
Maintenance & Operation				
45250 Office supplies	\$ 1,714	\$ 3,500	\$ 3,500	\$ 3,500
46011 Liability Insurance	834	2,808	2,808	3,212
46014 Contractual cost reduction	(24)	-	-	-
Maintenance & Operation Total	\$ 2,525	\$ 6,308	\$ 6,308	\$ 6,712
Total	\$ 42,644	\$ 91,452	\$ 91,452	\$ 96,872

City of Glendale
Glendale Water & Power Department
Water Works Revenue Fund - Water Engineering
(5920-4700)

	Actual 2020-21	Adopted 2021-22	Revised 2021-22	Adopted 2022-23
Salaries & Benefits				
41100 Salaries	\$ 1,185,001	\$ 1,626,098	\$ 1,694,561	\$ 1,685,720
41200 Overtime	26,972	30,000	30,000	30,000
41300 Hourly wages	15,219	86,562	86,562	61,301
Various Benefits	223,246	275,681	275,681	301,989
42700 PERS retirement	401,659	641,243	641,243	694,132
42701 PERS cost sharing	(42,473)	(66,302)	(54,686)	(52,066)
42799 Salary charges in (out)	-	(390,773)	(390,773)	(389,670)
Salaries & Benefits Total	\$ 1,809,623	\$ 2,202,509	\$ 2,282,588	\$ 2,331,406
Maintenance & Operation				
43110 Contractual services	\$ 598,491	\$ 837,500	\$ 837,500	\$ 881,200
44550 Travel	-	9,500	9,500	8,480
44650 Training	25	4,000	4,000	3,275
44700 Computer software	65,570	-	-	-
44760 Regulatory	5,469	135,000	135,000	150,000
44800 Membership and dues	105	80,000	80,000	80,000
45100 Books	-	300	300	300
45101 Digital resources	-	2,000	2,000	2,000
45150 Furniture and equipment	854	-	-	-
45250 Office supplies	2,212	4,000	4,000	4,000
45350 General supplies	7,431	1,200	1,200	1,200
45520 Purchased water	20,234,004	20,182,651	20,182,651	21,120,441
45681 Business meetings	-	500	500	500
45682 Miscellaneous	2,800	2,500	2,500	2,500
46005 Utilities	420,234	3,296,251	3,296,251	3,736,654
46011 Liability Insurance	43,351	86,618	86,618	97,743
46014 Contractual cost reduction	(37)	-	-	-
Maintenance & Operation Total	\$ 21,380,510	\$ 24,642,020	\$ 24,642,020	\$ 26,088,293
Total	\$ 23,190,133	\$ 26,844,529	\$ 26,924,608	\$ 28,419,699

City of Glendale
Glendale Water & Power Department
Water Works Revenue Fund - Water Distribution
(5920-4710)

	Actual 2020-21	Adopted 2021-22	Revised 2021-22	Adopted 2022-23
Salaries & Benefits				
41100 Salaries	\$ 1,314,224	\$ 1,982,904	\$ 1,982,904	\$ 1,971,089
41200 Overtime	104,873	100,000	100,000	100,000
41300 Hourly wages	43,567	120,060	120,060	127,740
Various Benefits	403,867	487,647	487,647	598,288
42700 PERS retirement	580,679	765,439	765,439	810,434
42701 PERS cost sharing	(45,015)	(66,025)	(66,025)	(60,796)
42799 Salary charges in (out)	-	(551,667)	(551,667)	(521,165)
Salaries & Benefits Total	\$ 2,402,196	\$ 2,838,358	\$ 2,838,358	\$ 3,025,590
Maintenance & Operation				
43050 Repairs buildings and grounds	\$ 21,777	\$ 30,000	\$ 30,000	\$ 30,000
43110 Contractual services	138,057	376,500	376,500	376,500
44100 Repairs to equipment	5,689	-	-	10,000
44120 Repairs to office equipment	-	10,000	10,000	-
44450 Postage	23	-	-	-
44550 Travel	-	1,330	1,330	1,585
44600 Laundry and towel service	7,089	8,000	8,000	10,000
44650 Training	-	3,600	3,600	3,600
45150 Furniture and equipment	536	-	-	-
45300 Small tools	944	15,000	15,000	15,000
45350 General supplies	325,190	300,000	300,000	300,000
45681 Business meetings	524	-	-	-
45682 Miscellaneous	-	500	500	500
46005 Utilities	3,705	-	-	-
46011 Liability Insurance	51,399	107,956	107,956	120,944
Maintenance & Operation Total	\$ 554,932	\$ 852,886	\$ 852,886	\$ 868,129
Total	\$ 2,957,129	\$ 3,691,244	\$ 3,691,244	\$ 3,893,719

**City of Glendale
Glendale Water & Power Department
Water Works Revenue Fund - Water Operation
(5920-4720)**

	Actual 2020-21	Adopted 2021-22	Revised 2021-22	Adopted 2022-23
Salaries & Benefits				
41100 Salaries	\$ 1,128,158	\$ 1,220,854	\$ 1,220,854	\$ 1,211,443
41200 Overtime	108,893	100,000	100,000	115,000
41300 Hourly wages	31,895	34,200	34,200	37,800
Various Benefits	310,502	290,653	290,653	333,978
42700 PERS retirement	415,162	448,206	448,206	475,456
42701 PERS cost sharing	(38,721)	(40,043)	(40,043)	(35,666)
42799 Salary charges in (out)	-	(21,330)	(21,330)	(32,573)
Salaries & Benefits Total	\$ 1,955,890	\$ 2,032,540	\$ 2,032,540	\$ 2,105,438
Maintenance & Operation				
43050 Repairs buildings and grounds	\$ 48,972	\$ 70,000	\$ 70,000	\$ 70,000
43110 Contractual services	153,434	767,000	767,000	767,000
44100 Repairs to equipment	21,408	95,000	95,000	-
44120 Repairs to office equipment	-	-	-	200,000
44450 Postage	6	-	-	-
44550 Travel	-	1,330	1,330	1,585
44650 Training	5,550	25,050	25,050	22,650
44700 Computer software	10,390	-	-	-
44760 Regulatory	145,212	5,000	5,000	5,000
44800 Membership and dues	68,140	3,000	3,000	3,000
45150 Furniture and equipment	536	-	-	-
45300 Small tools	319	500	500	500
45350 General supplies	75,240	185,000	185,000	185,000
45680 Uncollectible accounts	9	-	-	-
45681 Business meetings	-	1,500	1,500	1,500
45682 Miscellaneous	-	4,000	4,000	4,000
46005 Utilities	3,027,676	-	-	-
46011 Liability Insurance	44,636	67,351	67,351	75,038
Maintenance & Operation Total	\$ 3,601,528	\$ 1,224,731	\$ 1,224,731	\$ 1,335,273
Total	\$ 5,557,418	\$ 3,257,271	\$ 3,257,271	\$ 3,440,711

**City of Glendale
Glendale Water & Power Department
Water Works Revenue Fund - Water Quality
(5920-4730)**

	Actual 2020-21	Adopted 2021-22	Revised 2021-22	Adopted 2022-23
Salaries & Benefits				
41100 Salaries	\$ 769,628	\$ 779,476	\$ 779,476	\$ 804,548
41200 Overtime	7,329	25,000	25,000	25,000
Various Benefits	251,706	193,752	193,752	236,927
42700 PERS retirement	275,716	298,097	298,097	318,210
42701 PERS cost sharing	(25,496)	(25,803)	(25,803)	(23,869)
Salaries & Benefits Total	\$ 1,278,884	\$ 1,270,522	\$ 1,270,522	\$ 1,360,816
Maintenance & Operation				
43050 Repairs buildings and grounds	\$ 476	\$ -	\$ -	\$ -
43110 Contractual services	103,689	150,000	150,000	150,000
44450 Postage	993	2,500	2,500	2,500
44550 Travel	-	6,550	6,550	7,300
44650 Training	-	3,000	3,000	3,000
44800 Membership and dues	80	500	500	500
45100 Books	473	-	-	-
45150 Furniture and equipment	175	-	-	-
45170 Computer hardware	67	-	-	-
45350 General supplies	181,035	294,000	294,000	334,000
45450 Printing and graphics	34	30,000	30,000	15,000
46009 ITD service charge	-	-	-	34,042
46011 Liability Insurance	27,295	39,985	39,985	45,628
46014 Contractual cost reduction	(1,424)	-	-	-
Maintenance & Operation Total	\$ 312,893	\$ 526,535	\$ 526,535	\$ 591,970
Total	\$ 1,591,777	\$ 1,797,057	\$ 1,797,057	\$ 1,952,786

**City of Glendale
Glendale Water & Power Department
Water Depreciation Fund - Projects
(5930-0020)**

	Actual 2020-21	Adopted 2021-22	Revised 2021-22	Adopted 2022-23
Salaries & Benefits				
41100 Salaries	\$ 373,200	\$ -	\$ -	\$ -
41200 Overtime	69,100	-	-	-
41300 Hourly wages	17,574	-	-	-
Various Benefits	84,027	-	-	-
42700 PERS retirement	142,054	-	-	-
42701 PERS cost sharing	(14,795)	-	-	-
Salaries & Benefits Total	\$ 671,161	\$ -	\$ -	\$ -
Maintenance & Operation				
43110 Contractual services	\$ 926,240	\$ 4,000,500	\$ 4,000,500	\$ -
46011 Liability Insurance	16,099	-	-	-
46014 Contractual cost reduction	(587)	-	-	-
Maintenance & Operation Total	\$ 941,752	\$ 4,000,500	\$ 4,000,500	\$ -
Capital Outlay				
51000 Capital outlay	\$ 507,547	\$ 797,020	\$ 913,020	\$ -
Capital Outlay Total	\$ 507,547	\$ 797,020	\$ 913,020	\$ -
Capital Improvement				
51200 Other improvements	\$ -	\$ 210,100	\$ 210,100	\$ -
51250 Equipment	62,194	305,500	305,500	-
52100 Construction	5,514,503	6,275,000	10,252,500	11,382,500
53300 Other expenditures	258,965	-	-	-
59999 Asset capitalization	(7,956,122)	-	-	-
Capital Improvement Total	\$ (2,120,461)	\$ 6,790,600	\$ 10,768,100	\$ 11,382,500
Total	\$ -	\$ 11,588,120	\$ 15,681,620	\$ 11,382,500

**City of Glendale
 Glendale Water & Power Department
 Water Depreciation Fund - Administration
 (5930-4505)**

	Actual 2020-21	Adopted 2021-22	Revised 2021-22	Adopted 2022-23
Capital Outlay				
51000 Capital outlay	\$ -	\$ -	\$ -	\$ 55,440
Capital Outlay Total	\$ -	\$ -	\$ -	\$ 55,440
Total	\$ -	\$ -	\$ -	\$ 55,440

**City of Glendale
 Glendale Water & Power Department
 Water Depreciation Fund - Water Engineering
 (5930-4700)**

	Actual 2020-21	Adopted 2021-22	Revised 2021-22	Adopted 2022-23
Capital Outlay				
51000 Capital outlay	\$ -	\$ -	\$ -	\$ 965,000
Capital Outlay Total	\$ -	\$ -	\$ -	\$ 965,000
Total	\$ -	\$ -	\$ -	\$ 965,000

**City of Glendale
Glendale Water & Power Department
Water Customer Paid Capital Fund - Projects
(5950-0020)**

	Actual 2020-21	Adopted 2021-22	Revised 2021-22	Adopted 2022-23
Salaries & Benefits				
41100 Salaries	\$ 102,604	\$ -	\$ -	-
41200 Overtime	19,605	-	-	-
41300 Hourly wages	26,034	-	-	-
Various Benefits	37,748	-	-	-
42700 PERS retirement	46,597	-	-	-
42701 PERS cost sharing	(4,125)	-	-	-
Salaries & Benefits Total	\$ 228,463	\$ -	\$ -	-
Maintenance & Operation				
43110 Contractual services	\$ 137,598	\$ 1,275,000	\$ 1,275,000	\$ 1,275,000
46011 Liability Insurance	5,201	-	-	-
Maintenance & Operation Total	\$ 142,799	\$ 1,275,000	\$ 1,275,000	\$ 1,275,000
Capital Improvement				
52100 Construction	\$ 42,682	\$ -	\$ -	-
53300 Other expenditures	135,705	-	-	-
59999 Asset capitalization	(549,649)	-	-	-
Capital Improvement Total	\$ (371,262)	\$ -	\$ -	-
Total	\$ -	\$ 1,275,000	\$ 1,275,000	\$ 1,275,000

**City of Glendale
Glendale Water & Power Department
Water Customer Repair Fund - Projects
(5980-0020)**

	Actual 2020-21	Adopted 2021-22	Revised 2021-22	Adopted 2022-23
Salaries & Benefits				
41100 Salaries	\$ 1,777	\$ -	\$ -	\$ -
41200 Overtime	3,515	-	-	-
41300 Hourly wages	212	-	-	-
Various Benefits	1,175	-	-	-
42700 PERS retirement	716	-	-	-
42701 PERS cost sharing	(64)	-	-	-
Salaries & Benefits Total	\$ 7,332	\$ -	\$ -	\$ -
Maintenance & Operation				
43050 Repairs buildings and grounds	\$ 13,119	\$ -	\$ -	\$ -
43110 Contractual services	7,653	-	-	-
45350 General supplies	-	50,000	50,000	50,000
46011 Liability Insurance	194	-	-	-
Maintenance & Operation Total	\$ 20,966	\$ 50,000	\$ 50,000	\$ 50,000
Total	\$ 28,298	\$ 50,000	\$ 50,000	\$ 50,000

**CITY OF GLENDALE
GLENDALE WATER & POWER DEPARTMENT
PERSONNEL CLASSIFICATION DETAIL**

Classification	Actual 2020-21	Adopted 2021-22	Revised 2021-22	Adopted 2022-23
<u>Salaried Positions</u>				
Administrative Analyst	2.00	2.00	2.00	2.00
Administrative Assistant	3.00	3.00	1.00	2.00
Assistant Engineering Technician	3.00	3.00	-	2.00
Assistant Environmental Technician	1.00	1.00	1.00	1.00
Assistant General Manager	3.00	2.00	2.00	2.00
Assistant IT Applications Specialist	4.00	4.00	4.00	4.00
Business Transformer & Marketing Administrator	1.00	-	-	-
Business Transformer Manager	-	-	1.00	1.00
Chief Assistant General Manager/Electric	1.00	1.00	1.00	1.00
Chief Assistant General Manager/Water	1.00	1.00	1.00	1.00
Civil Engineer II	1.00	1.00	1.00	1.00
Civil Engineering Assistant	2.00	2.00	3.00	2.00
Civil Engineering Associate	2.00	2.00	2.00	2.00
Community Outreach Associate	2.00	2.00	3.00	2.00
Customer Service Administrator	1.00	1.00	1.00	1.00
Customer Service Assistant	-	-	1.00	-
Customer Service Field Supervisor	1.00	1.00	1.00	1.00
Customer Service Field Technician	6.00	6.00	6.00	6.00
Customer Service Operation Manager	2.00	2.00	2.00	2.00
Customer Service Representative	3.00	3.00	3.00	3.00
Customer Service Utility Representative	25.00	25.00	25.00	25.00
Customer Service Utility Supervisor	2.00	2.00	2.00	2.00
Deputy General Manager GWP	-	-	1.00	-
Electrical Engineer I	2.00	1.00	2.00	2.00
Electrical Engineer II	1.00	1.00	1.00	1.00
Electrical Engineering Assistant	3.00	3.00	3.00	3.00
Electrical Engineering Associate	3.00	4.00	3.00	3.00
Electrical Helper	1.00	1.00	1.00	1.00
Electrical Line Mechanic	7.00	7.00	9.00	7.00
Electrical Line Mechanic Apprentice	11.00	11.00	9.00	11.00
Electrical Line Mechanic Supervisor I	8.00	8.00	8.00	8.00
Electrical Line Mechanic Supervisor II	3.00	3.00	3.00	3.00
Electrical Mechanic Assistant	5.00	5.00	5.00	5.00
Electrical Services Administrator	1.00	1.00	1.00	1.00
Electrical Service Planner	3.00	3.00	3.00	3.00
Electrical Superintendent-Const, Trans&Di	1.00	1.00	1.00	1.00
Electrical Superintendent-SubMeter&Comm	1.00	1.00	1.00	1.00
Electrical Superintendent	1.00	1.00	1.00	1.00
Electrical Test Assistant	1.00	1.00	-	1.00
Electrical Test Supervisor	1.00	1.00	1.00	1.00
Electrical Test Technician I	2.00	2.00	4.00	3.00
Electrical Test Technician II	7.00	7.00	6.00	6.00
Energy Marketer/Trader	1.00	1.00	1.00	1.00
Energy Trading Manager	1.00	1.00	1.00	1.00
Engineering Aide	1.00	1.00	1.00	1.00
Engineering Technician	2.00	2.00	3.00	2.00
Environmental Program Administrator	1.00	1.00	-	-
Environmental Program Specialist	1.00	1.00	1.00	1.00
General Manager GWP	1.00	1.00	1.00	1.00
Integrated Resources Plan Administrator	-	-	1.00	1.00
IT Applications Analyst	1.00	1.00	1.00	1.00
Line Clearance Forestry Supervisor I	2.00	2.00	2.00	2.00
Mechanical Engineer II	1.00	1.00	1.00	1.00
Office Services Supervisor	2.00	2.00	2.00	2.00

**CITY OF GLENDALE
GLENDALE WATER & POWER DEPARTMENT
PERSONNEL CLASSIFICATION DETAIL**

Classification	Actual 2020-21	Adopted 2021-22	Revised 2021-22	Adopted 2022-23
Power Contracts Manager	1.00	1.00	1.00	1.00
Power Planning Manager	1.00	1.00	1.00	1.00
Power Plant Auxiliary Operator	4.00	-	4.00	4.00
Power Plant Control Operator	11.00	13.00	11.00	11.00
Power Plant Control Operator Apprentice	6.00	6.00	6.00	6.00
Power Plant Inst & Cntrl Supervisor	1.00	1.00	1.00	1.00
Power Plant Maintenance Supervisor	1.00	1.00	1.00	1.00
Power Plant Mechanic	5.00	5.00	2.00	2.00
Power Plant Mechanic Apprentice	1.00	1.00	1.00	1.00
Power Plant Mechanic Assistant	1.00	1.00	1.00	1.00
Power Plant Mechanic Helper	-	-	2.00	2.00
Power Plant Operations Supervisor	1.00	1.00	1.00	1.00
Power Plant Operator	-	2.00	-	-
Power Plant Shift Supervisor	5.00	5.00	5.00	5.00
Power Plant Superintendent	1.00	1.00	1.00	1.00
Power Plant Technician	1.00	1.00	1.00	1.00
Power System Operator I	4.00	4.00	4.00	4.00
Power System Operator II	4.00	4.00	4.00	4.00
Power System Trainee	1.00	1.00	1.00	1.00
Power Systems Analyst	1.00	1.00	1.00	1.00
Power Systems Associate	1.00	1.00	2.00	2.00
Principal Electrical Engineer	1.00	1.00	1.00	1.00
Principal Engineering Technician	1.00	1.00	2.00	2.00
Principal Mechanical Engineer	1.00	1.00	1.00	1.00
Principal Power System Operator	1.00	1.00	1.00	1.00
Principal Utility Financial Analyst	1.00	1.00	1.00	1.00
Public Benefits Charge Coordinator	-	1.00	-	-
Public Benefits Charge Marketing Manager	2.00	2.00	2.00	2.00
Sr. Civil Engineer	3.00	3.00	3.00	3.00
Sr. Customer Service Field Technician	1.00	1.00	-	1.00
Sr. Customer Service Utility Representative	6.00	6.00	6.00	6.00
Sr. Electrical Engineer	2.00	2.00	2.00	2.00
Sr. Electrical Service Planner	3.00	3.00	2.00	2.00
Sr. Electrical Test Technician	2.00	2.00	2.00	2.00
Sr. Engineering Technician	3.00	3.00	4.00	4.00
Sr. Environmental Program Specialist	1.00	1.00	1.00	1.00
Sr. IT Application Specialist	3.00	3.00	3.00	3.00
Sr. Mechanical Engineer	1.00	1.00	1.00	1.00
Sr. Office Services Specialist	2.00	2.00	4.00	2.00
Sr. Office Specialist	2.00	2.00	-	2.00
Sr. Power Plant Mechanic	2.00	2.00	2.00	2.00
Sr. Power Plant Technician	2.00	2.00	2.00	2.00
Sr. Storekeeper	1.00	1.00	1.00	1.00
Sr. Utility Financial Analyst	2.00	2.00	2.00	2.00
Sr. Utility Locator	1.00	1.00	1.00	1.00
Sr. Water Facilities Operator	2.00	2.00	2.00	2.00
Sr. Water Meter Repairer	1.00	1.00	-	1.00
Sr. Water Quality Specialist	1.00	1.00	1.00	1.00
Sr. Water Quality Technician	1.00	1.00	1.00	1.00
Sr. Water System Mechanic	5.00	5.00	4.00	4.00
Station Electrician	1.00	1.00	1.00	1.00
Station Electrician/Operator	6.00	7.00	6.00	6.00
Station Electrician/Operator Apprentice	3.00	2.00	3.00	3.00
Station Electrician/Operator Supervisor I	4.00	4.00	4.00	4.00
Station Electrician/Operator Supervisor II	1.00	1.00	1.00	1.00

**CITY OF GLENDALE
GLENDALE WATER & POWER DEPARTMENT
PERSONNEL CLASSIFICATION DETAIL**

Classification	Actual 2020-21	Adopted 2021-22	Revised 2021-22	Adopted 2022-23				
Station Electrician Supervisor I	1.00	1.00	1.00	1.00				
Storekeeper	2.00	2.00	2.00	2.00				
Stores Supervisor	1.00	1.00	1.00	1.00				
Supervising Electrical Engineering Associate	1.00	1.00	1.00	1.00				
Sustainability Officer	0.60	0.60	0.60	0.60				
Systems Analyst	1.00	1.00	1.00	1.00				
Transformer Shop Technician	1.00	1.00	1.00	1.00				
Underground Distribution Construction Mechanic I	3.00	3.00	8.00	8.00				
Underground Distribution Construction Mechanic II	1.00	1.00	2.00	2.00				
Underground Distribution Construction Supervisor I	1.00	1.00	2.00	2.00				
Underground Distribution Construction Supervisor II	-	-	1.00	1.00				
Utility Building Repairer	1.00	1.00	1.00	1.00				
Utility Business System Supp Administrator	1.00	1.00	1.00	1.00				
Utility Construction Inspector	2.00	2.00	2.00	2.00				
Utility Equipment Operator II	2.00	2.00	2.00	2.00				
Utility Locator	1.00	1.00	1.00	1.00				
Utility Finance Manager	-	-	1.00	1.00				
Utility Manager	2.00	2.00	-	1.00				
Utility Safety Officer	1.00	1.00	1.00	1.00				
Utility Welder	2.00	2.00	2.00	2.00				
Water Facilities Operator	2.00	2.00	2.00	2.00				
Water Facilities Supervisor	1.00	1.00	1.00	1.00				
Water Meter Repairer	-	-	1.00	-				
Water Quality Manager	1.00	1.00	1.00	1.00				
Water Quality Specialist	1.00	1.00	1.00	1.00				
Water Quality Supervisor	1.00	1.00	1.00	1.00				
Water Quality Technician	3.00	3.00	3.00	3.00				
Water Services Administrator	1.00	1.00	1.00	1.00				
Water Superintendent	2.00	2.00	2.00	2.00				
Water System Apprentice	2.00	2.00	2.00	2.00				
Water System Equipment Operator	2.00	2.00	2.00	2.00				
Water System Helper	6.00	6.00	6.00	6.00				
Water System Mechanic	3.00	3.00	4.00	4.00				
Water System Operations Supervisor	2.00	2.00	2.00	2.00				
Water System Supervisor I	1.00	1.00	1.00	1.00				
Water System Supervisor II	4.00	4.00	4.00	4.00				
Total Salaried Positions	<u>318.60</u>	<u>317.60</u>	<u>324.60</u>	<u>324.60</u>				
<u>Hourly Positions</u>		*	*	*				
Customer Service Utility Representative	0.92	(1)	0.92	(1)	0.92	(1)	-	*
Electrical Helper	1.73	(3)	10.00	(10)	10.00	(10)	15.00	(15)
Hourly City Worker	7.09	(10)	9.89	(13)	9.89	(13)	14.52	(19)
Power Line Truck Operator	-		2.00	(2)	2.00	(2)	2.00	(2)
Stores Clerk	1.00	(1)	1.00	(2)	1.00	(2)	1.00	(2)
Water System Helper	1.08	(2)	1.92	(2)	1.92	(2)	2.88	(3)
Total Hourly FTE Positions	<u>11.82</u>		<u>25.73</u>		<u>25.73</u>		<u>35.40</u>	
Glendale Water & Power Total	<u>330.42</u>		<u>343.33</u>		<u>350.33</u>		<u>360.00</u>	

Notes:

* Indicates number of employees corresponding to the stated Full-Time Equivalence (FTE).