



# Best Practices to PROTECT OUR WATERWAYS

- ✔ Prevent discharges to the storm drains and do not expose waste to rainwater  
Pollution that enters the storm drains will end up in our waterways

## Pet Care

Pick up pet waste and dispose of it properly. Do not dump pet waste in the street or storm drain.



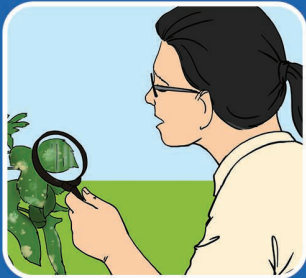
## Landscaping

Dispose of green waste in the compost bin and minimize irrigation. Do not dump green waste and do not overwater into the street or storm drain.



## Pesticide Use

Identify the correct pest and don't over-apply pesticides.



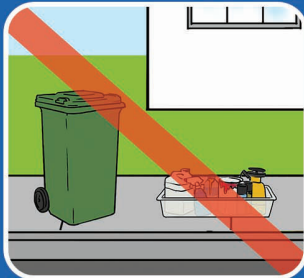
## Home Improvements

Properly dispose of paint and construction wastewater. Do not dump them into the street or storm drain.



## Household Hazardous Waste (HHW)

Dispose of HHW at HHW collection centers. Do not dispose of HHW in the trash or into the street or storm drain.



## Vehicle Maintenance

Place a drip pan under leaks. Do not wash leaks or spills into the street or storm drain.

