

**Photo Report**  
**Babe Herman Little League Field**  
**Programs, Services, and Activities**

**Finding:** The Babe Herman Little League Field, located at 1726 Canada Boulevard in Glendale California, was inspected by Disability Access Consultants, Inc., on June 12, 2007.



**Alternative \***  
**Rec:**  
**(Where Available)**

**Full Rec:** Any renovation or new construction that occurred after January 26, 1992, is subject to meet full code specifications for the California Building Code and ADAAG requirements. All recommendations in this report are based on ADAAG and CBC title 24 requirements. Consult with your design professional to determine which elements are affected by these requirements. It is recommended that Disability Access Consultants, Inc. is consulted for inspection of any new construction or renovation at the facility.

Citations: ADAAG 4.1.2; ADAAG 4.1.3; ADAAG 4.1.5; ADAAG 4.1.6

Minimum Quantity	1
Maximum Quantity	1
<b>Minimum Estimated Cost:</b>	\$0.00
<b>Maximum Estimated Cost:</b>	\$0.00
Record Number::	2
Priority:	

**Parking**

**Finding:** Paved parking is provided next to the Dad's Club. There are no accessible parking spaces designated out of six total parking spaces provided in the parking lot.



**Alternative \***  
**Rec:**  
**(Where Available)**

**Full Rec:** One out of the six total number of marked parking spaces is required to be designated exclusively for accessible parking, as required by CBC 1129B and ADAAG. Create one van-accessible parking space measuring at least 108 inches wide and 216 inches long with an access aisle measuring at least 96 inches wide (8 feet) located on the passenger side (right side) of the parking space (see CBC 1129B). Add the words NO PARKING in 12 inch high white letters at the entrance to the accessible parking access aisle.

Citations: CBC 1129B; ADAAG 4.3.2(1); ADAAG 4.6.2; ADAAG 4.1.2(5)

Minimum Quantity	1
Maximum Quantity	1
<b>Minimum Estimated Cost:</b>	\$270.00
<b>Maximum Estimated Cost:</b>	\$270.00
Record Number::	3
Priority:	

# Babe Herman Little League Field

## Parking

**Finding:** Each designated accessible parking space required in the parking lot shall provide a post-mounted sign showing the International Symbol of Accessibility.

**Alternative \***  
**Rec:**  
**(Where Available)**



**Full Rec:** Install a permanently posted reflectorized sign measuring 70 square inches that includes an ISA symbol adjacent to and visible from each accessible parking space (see CBC 1129B.5). The bottom edge of each sign must be mounted 80 inches from the ground surface so that it cannot be obscured by a parked vehicle (see CBC 1129B.5). The "van-accessible" parking space shall provide an additional sign marked "van-accessible" mounted below the sign (see CBC 1129B.5 and ADAAG 4.6.4).

Citations: CBC 1129B.5; ADAAG 4.6.4

Minimum Quantity	1
Maximum Quantity	1
<b>Minimum Estimated Cost:</b>	\$150.00
<b>Maximum Estimated Cost:</b>	\$150.00
Record Number::	4
Priority:	

## Parking

**Finding:** There is no warning signage posted at the entrance to the parking lot regarding unauthorized use of accessible parking spaces in the parking lot.

**Alternative \***  
**Rec:**  
**(Where Available)**



**Full Rec:** Post a sign in a conspicuous place to the entrance of the parking lot, or immediately adjacent to and visible from each accessible parking space. The warning sign shall measure at least 17 inches by 22 inches in size and consist of lettering at least 1 inch in height that clearly and conspicuously states the following; "Unauthorized vehicles parked in designated accessible spaces not displaying distinguishing placards or license plates issued for persons with disabilities may be towed away at owner's expense. Towed vehicles may be reclaimed at \_\_\_\_ or by telephoning \_\_\_\_ ." Fill in the blank spaces with appropriate information as a permanent part of the sign and maintain the currency of the information (see CBC 1129B.5). Be sure to add the CVC 22511.8(a)(d) to the sign.

Citations: CBC 1129B.5; ADAAG 4.6.4 CVC 22511.8(a)(d)

Minimum Quantity	1
Maximum Quantity	1
<b>Minimum Estimated Cost:</b>	\$150.00
<b>Maximum Estimated Cost:</b>	\$150.00
Record Number::	5
Priority:	

## Babe Herman Little League Field

### Curbs, Curb Ramps, and Crosswalks

**Finding:** The slope of each side of the concrete sidewalk curb ramp is greater than 8.33%. The curb ramp does not provide a grooved border along the top and sides of the ramp at the level of the sidewalk. The concrete curb ramp does not provide a detectable warning surface which includes truncated domes.



**Curb Ramp Next to the Restrooms**

Citations: CBC 1127B.5.3; ADAAG 4.7.2 & 4.29

Minimum Quantity	1
Maximum Quantity	1
<b>Minimum Estimated Cost:</b>	<b>\$1,033.00</b>
<b>Maximum Estimated Cost:</b>	<b>\$1,033.00</b>
Record Number::	28
Priority:	

**Alternative \***  
**Rec:**  
**(Where Available)**

**Full Rec:** Replace the curb ramp with a compliant curb ramp at least 48 inches in width that provides a slope no greater than 8.33%. Install a detectable warning surface which extends the full length and width of the concrete curb ramp and its side flares with truncated domes that contrast visually by either light on dark or dark on light which is an integral part of the concrete curb ramp. The truncated domes may be cast in place or stamped or of a prefabricated surface treatment (see CBC 1127B.5.8).

### Path of Travel

**Finding:** There is no accessible route from the public right of way to the accessible entrance of the facility. The accessible route crosses vehicular traffic.



**Accessible Route from the Public Right of Way**

Citations: CBC 1114B.1.2; CBC 1117B.5.7; CBC 1127B.3; ADAAG 4.1.2(7); ADAAG 4.3.2; ADAAG 4.14.1

Minimum Quantity	1
Maximum Quantity	1
<b>Minimum Estimated Cost:</b>	<b>\$107.00</b>
<b>Maximum Estimated Cost:</b>	<b>\$0.00</b>
Record Number::	7
Priority:	

**Alternative** Post directional signage.  
**Rec:**  
**(Where Available)**

**Full Rec:** Provide at least one accessible route from the public right of way to the accessible entrance of the facility. Make certain to post signage indicating the direction to accessible building entrances at every major junction along the accessible route. Signs shall include the International Symbol of Accessibility.

# Babe Herman Little League Field

## Path of Travel

**Finding:** There is no crosswalk provided on the path of travel from the public right of way to the facility. The required accessible route crosses a vehicular way.

### Alternative \*

**Rec:**  
(Where Available)



**Accessible Route from the Public Right of Way**

Citations: ADAAG 4.7.9 ADAAG 4.2.9

**Full Rec:** Stripe a crosswalk not less than 48 inches wide on the path of travel to the accessible entrance of the facility. Provide a level surface that does not exceed a slope greater than 5%. Cross slopes shall not exceed 2%. Detectable warnings should be placed at the entrance and exit of the crosswalk.

Minimum Quantity	1
Maximum Quantity	1
<b>Minimum Estimated Cost:</b>	\$100.00
<b>Maximum Estimated Cost:</b>	\$100.00

Record Number:: 8

Priority:

## Path of Travel

**Finding:** There are cross slopes greater than 2% on the primary path of travel next to the press box.

### Alternative \*

**Rec:**  
(Where Available)



**Path of Travel at the Little League Field**

Citations: CBC 1133B.7.1.3; CBC 1133B.7.3; ADAAG 4.3.7

**Full Rec:** Resurface the path of travel to provide a level surface that does not exceed a slope greater than 5%. Cross slopes shall not exceed 2%.

Minimum Quantity	1
Maximum Quantity	1
<b>Minimum Estimated Cost:</b>	\$1,440.00
<b>Maximum Estimated Cost:</b>	\$1,440.00

Record Number:: 14

Priority:

# Babe Herman Little League Field

## Path of Travel

**Finding:** There is a step on the primary path of travel to the Dad's Club, preventing access to individuals with mobility impairments.



***Path of Travel to the Dad's Club***

Citations: CBC 1114B.1.2; CBC 1133B.7.4; ADAAG 4.3.8

Minimum Quantity	1
Maximum Quantity	1
<b>Minimum Estimated Cost:</b>	\$9,515.00
<b>Maximum Estimated Cost:</b>	\$9,515.00

Record Number:: 38

Priority:

### Alternative \*

**Rec:**  
**(Where Available)**

**Full Rec:** Since programs, services and activities to staff and the public are provided in this location, those programs, services and activities are required to be made accessible. It is recommended that a ramp be installed or other means of vertical access.

## Path of Travel

**Finding:** At the time of inspection, vegetation encroached into the primary path of travel, obstructing passage by reducing the clear width along the accessible route.



***Path of Travel to the Dad's Club***

Citations: CBC 1127B.1; CBC 1133B.7.4; ADAAG 4.3.6; ADAAG 4.5; ADAAG 4.4

Minimum Quantity	1
Maximum Quantity	1
<b>Minimum Estimated Cost:</b>	\$0.00
<b>Maximum Estimated Cost:</b>	\$0.00

Record Number:: 41

Priority:

### Alternative \*

**Rec:**  
**(Where Available)**

**Full Rec:** Maintain grass or landscaping adjacent to primary path of travel walkways to eliminate any encroachment into the accessible route.



## Babe Herman Little League Field

### Path of Travel

**Finding:** There is no crosswalk provided on the path of travel from the Dad's Club to the Little League field. The required accessible route crosses a vehicular way.

**Alternative \***

**Rec:**  
(Where Available)

**Full Rec:** Stripe a crosswalk not less than 48 inches wide on the path of travel to the accessible entrance of the facility. Provide a level surface that does not exceed a slope greater than 5%. Cross slopes shall not exceed 2%. Detectable warnings should be placed at the entrance and exit of the crosswalk.



**Path of Travel to the Little League Field**

Citations: ADAAG 4.7.9 ADAAG 4.2.9

Minimum Quantity	1
Maximum Quantity	1
<b>Minimum Estimated Cost:</b>	<b>\$100.00</b>
<b>Maximum Estimated Cost:</b>	<b>\$100.00</b>
Record Number::	6
Priority:	

### Path of Travel

**Finding:** There are only stairs to the primary functions provided on the stage in the Dad's Club, preventing access to individuals with mobility impairments.

**Alternative \***

**Rec:**  
(Where Available)

**Full Rec:** Install a vertical platform lift to provide a direct path between the stage and level seating area in the Dad's Club, allowing individuals with mobility impairments to participate in programs, services and activities provided by the facility on the stage. The ADA mandates accessibility to programs, services and activities which serve the public.



**Path of Travel to the Stage in the Dad's Club**

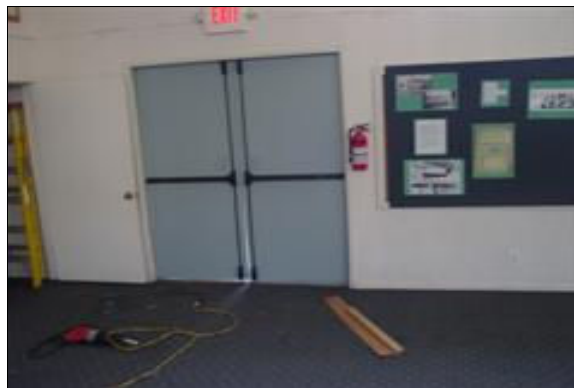
Citations: CBC 1114B.1.2; ADAAG 4.3.2

Minimum Quantity	1
Maximum Quantity	1
<b>Minimum Estimated Cost:</b>	<b>\$0.00</b>
<b>Maximum Estimated Cost:</b>	<b>\$8,210.00</b>
Record Number::	33
Priority:	

## Babe Herman Little League Field

### Path of Travel

**Finding:** The leading edge of the fire extinguisher in the Dad's Club is more than 4 inches from the wall and greater than 27 inches from the floor and protrudes into the primary path of travel.



#### **Protruding Object**

Citations: CBC 1121B.1; ADAAG 4.2.4.1; ADAAG 4.4

Minimum Quantity	1
Maximum Quantity	1
<b>Minimum Estimated Cost:</b>	\$0.00
<b>Maximum Estimated Cost:</b>	\$0.00
Record Number::	37
Priority:	

**Full Rec:** Consult with the local fire marshal to determine the feasibility of moving the fire extinguishers to new locations (such as in a corner) to eliminate the protrusion into the primary path of travel. Otherwise, install side extensions or wing walls on each fire extinguisher throughout the facility so that the leading edges are less than 27 inches from the floor (see CBC 1121B.1 and ADAAG 4.4).

### Path of Travel

**Finding:** The sink in the Kitchen is in an enclosed cabinet, thereby preventing an accessible forward approach. The height of the counter surface of the sink is greater than 34 inches above the finished floor.



#### **Sink in the Dad's Club**

Citations: ADAAG 4.19.3

Minimum Quantity	1
Maximum Quantity	1
<b>Minimum Estimated Cost:</b>	\$420.00
<b>Maximum Estimated Cost:</b>	\$420.00
Record Number::	31
Priority:	

**Full Rec:** Sinks in rooms must provide clear floor space in front of the sink for an accessible forward approach and shall provide at least 27 inches clear knee space and a minimum of nine inches clear toe space (see ADAAG 4.19.2). If neither clear floor space and knee and toe clearance can be provided, remove the sink cabinet and replace with an accessible wall-mounted sink unit.

**Alternative \***  
**Rec:**  
**(Where Available)**

# Babe Herman Little League Field

## Path of Travel

**Finding:** The pipes under the sink in the Kitchen do not provide protection against contact.

### Alternative \*

**Rec:**  
(Where Available)

**Full Rec:** Insulate or otherwise configure pipes under the sink designated to be accessible in the room to protect against contact (see ADAAG 4.19.4). Make certain there are no sharp or abrasive surfaces under the sink.



**Sink in the Dad's Club**

Citations: ADAAG 4.19.4

Minimum Quantity 1

Maximum Quantity 1

**Minimum Estimated Cost:** \$39.00

**Maximum Estimated Cost:** \$39.00

Record Number:: 32

Priority:

## Ramps

**Finding:** The slope of the concrete ramp is greater than 8.33%.

### Alternative \*

**Rec:**  
(Where Available)

**Full Rec:** Modify the run of the concrete ramp to provide a slope no greater than 8.33% with a cross slope not exceeding 2% (see CBC 1133B.5.3 and ADAAG 4.8.2).



**Exterior Ramp to the Little League Field**

Citations: CBC 1133B.5.3; ADAAG 4.8

Minimum Quantity 1

Maximum Quantity 1

**Minimum Estimated Cost:** \$4,920.00

**Maximum Estimated Cost:** \$4,920.00

Record Number:: 9

Priority:



# Babe Herman Little League Field

## Ramps

**Finding:** There is only one handrail provided on the ramp. The handrail is mounted at a height less than 34 inches. There are no 12-inch extensions beyond the top and bottom of the ramp. The ends of the handrail end abruptly. The gripping surface of the handrail is interrupted by mounting brackets.

### Alternative \*

**Rec:**  
(Where Available)



**Exterior Ramp to the Little League Field**

Citations: CBC 1133B.5.5; ADAAG 4.8.5

**Full Rec:** Install a handrail on each side of the ramp that provide a continuous and smooth gripping surface diameter between 1 1/4 inches to 1 7/8 inches, mounted at a height between 34 inches and 38 inches and shall be at a distance no less than 1 1/2 inches from the adjacent wall. The ends of the handrail shall extend 12 inches in a parallel height from the top and bottom of the ramp and return smoothly to the post or wall.

Minimum Quantity	1
Maximum Quantity	1
<b>Minimum Estimated Cost:</b>	\$1,200.00
<b>Maximum Estimated Cost:</b>	\$1,200.00
Record Number::	10
Priority:	

## Stairs

**Finding:** There is no detectable striping on the top and bottom treads of the interior stairway.



**Interior Stairs to the Press Box**

Citations: CBC 1006.16.1; CBC 11133B.4.4; ADAAG 4.9.5

### Alternative \*

**Rec:**  
(Where Available)

**Full Rec:** Affix detectable contrasting striping to the top and bottom treads of the stairway that clearly contrasts in color from the tread and is at least 2 inches in width placed no more than 1 inch from the tread nose or landing.

Minimum Quantity	1
Maximum Quantity	1
<b>Minimum Estimated Cost:</b>	\$144.00
<b>Maximum Estimated Cost:</b>	\$144.00
Record Number::	20
Priority:	

## Babe Herman Little League Field

### Stairs

**Finding:** There are no handrails provided on the stairway.

**Alternative \***

**Rec:**  
(Where Available)

**Full Rec:** Install pipe rail handrails on each side of stairway that provide a gripping surface between 1 1/4 to 1 7/8 inches with 12-inch top and bottom handrail extensions that extend beyond the top and bottom treads of the stairway which are parallel to the floor surface. Handrails shall be mounted at a height between 34 and 38 inches at a distance no less than 1 1/2 inches from the adjacent wall.



**Interior Stairs to the Press Box**

Citations: CBC 1006; ADAAG 4.9

Minimum Quantity	1
Maximum Quantity	1
<b>Minimum Estimated Cost:</b>	\$528.00
<b>Maximum Estimated Cost:</b>	\$528.00
Record Number::	21
Priority:	

### Stairs

**Finding:** There is no detectable striping on the top and bottom treads of the interior stairway.

**Alternative \***

**Rec:**  
(Where Available)

**Full Rec:** Affix detectable contrasting striping to the top and bottom treads of the stairway that clearly contrasts in color from the tread and is at least 2 inches in width placed no more than 1 inch from the tread nose or landing.



**Interior Stairs to the Stage in the Dad's Club**

Citations: CBC 1006.16.1; CBC 11133B.4.4; ADAAG 4.9.5

Minimum Quantity	1
Maximum Quantity	2
<b>Minimum Estimated Cost:</b>	\$144.00
<b>Maximum Estimated Cost:</b>	\$288.00
Record Number::	34
Priority:	

## Babe Herman Little League Field

### Stairs

**Finding:** The width of the interior stairway is less than 36 inches.

**Alternative \***

**Rec:**  
(Where Available)

**Full Rec:** Install an interior stairway with a minimum width of 36 inches (see CBC 1006.2).



**Interior Stairs to the Stage in the Dad's Club**

Citations: CBC 1006.2

Minimum Quantity	1
Maximum Quantity	2
<b>Minimum Estimated Cost:</b>	\$2,816.00
<b>Maximum Estimated Cost:</b>	\$5,632.00

Record Number:: 35

Priority:

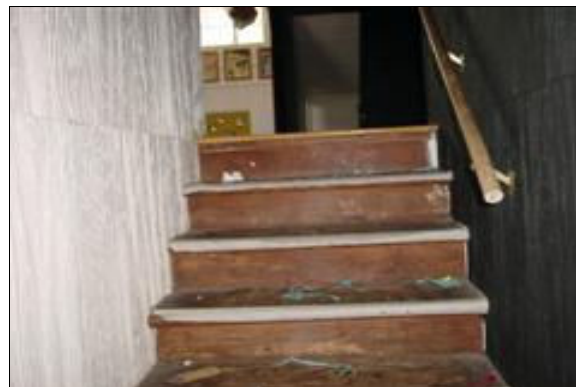
### Stairs

**Finding:** There is only one handrail on the stairway. The handrail does not provide 12-inch extensions beyond the top and bottom treads and the ends of the handrail end abruptly. The handrail is mounted at a height less than 34 inches.

**Alternative \***

**Rec:**  
(Where Available)

**Full Rec:** Install handrails on each side of stairway that provide a gripping surface between 1 1/4 to 1 7/8 inches with 12-inch top and bottom handrail extensions that extend beyond the top and bottom treads of the stairway which are parallel to the ground surface and return smoothly to the post or wall. Handrails shall be mounted at a height between 34 and 38 inches at a distance no less than 1 1/2 inches from the adjacent wall.



**Interior Stairs to the Stage in the Dad's Club**

Citations: CBC 1133B.4.2; ADAAG 4.9.4

Minimum Quantity	1
Maximum Quantity	2
<b>Minimum Estimated Cost:</b>	\$528.00
<b>Maximum Estimated Cost:</b>	\$1,056.00

Record Number:: 36

Priority:

# Babe Herman Little League Field

## Doors

**Finding:** The exterior passage door has a round doorknob, which requires twisting of the wrist to operate.



**Exterior Door to the Kitchen at the Dad's Club**

Citations: ADAAG 4.13.9

Minimum Quantity	1
Maximum Quantity	1
<b>Minimum Estimated Cost:</b>	\$834.00
<b>Maximum Estimated Cost:</b>	\$834.00

Record Number:: 29

Priority:

### Alternative \*

**Rec:**  
(Where Available)

**Full Rec:** Replace the existing door hardware with accessible hardware (see ADAAG 4.13.9).

## Doors

**Finding:** The clear opening width of the door is less than 32 inches.



**Exterior Door to the Kitchen at the Dad's Club**

Citations: CBC 1133B.2.3.1; ADAAG 4.13.5

Minimum Quantity	1
Maximum Quantity	1
<b>Minimum Estimated Cost:</b>	\$750.00
<b>Maximum Estimated Cost:</b>	\$750.00

Record Number:: 30

Priority:

### Alternative \*

**Rec:**  
(Where Available)

**Full Rec:** Widen the door opening and install a door that provides at least 32 inches of clear width with the door open 90 degrees (see CBC 1133B.2.3.1 and ADAAG 4.13.5).

# Babe Herman Little League Field

## Doors

**Finding:** The clear opening width of the door is less than 32 inches.



**Exterior Door to the Press Box**

Citations: CBC 1133B.2.3.1; ADAAG 4.13.5

Minimum Quantity	1
Maximum Quantity	1
<b>Minimum Estimated Cost:</b>	\$750.00
<b>Maximum Estimated Cost:</b>	\$750.00

Record Number:: 18

Priority:

### Alternative \*

**Rec:**  
**(Where Available)**

**Full Rec:** Widen the door opening and install a door that provides at least 32 inches of clear width with the door open 90 degrees (see CBC 1133B.2.3.1 and ADAAG 4.13.5).

## Doors

**Finding:** The exterior door does not provide accessible hardware.



**Exterior Door to the Press Box**

Citations: ADAAG 4.13.9

Minimum Quantity	1
Maximum Quantity	1
<b>Minimum Estimated Cost:</b>	\$834.00
<b>Maximum Estimated Cost:</b>	\$834.00

Record Number:: 19

Priority:

### Alternative \*

**Rec:**  
**(Where Available)**

**Full Rec:** Replace the existing door hardware with accessible hardware (see ADAAG 4.13.9).



# Babe Herman Little League Field

## Doors

**Finding:** The vertical clearance height of the entrance gate to the dugouts, at the left, provides less than 80 inches.



**Exterior Gate to the Dugouts**

Citations: CBC 1133B.2.3.1; ADAAG 4.4.2; ADAAG 4.13

Minimum Quantity	1
Maximum Quantity	1
<b>Minimum Estimated Cost:</b>	<b>\$0.00</b>
<b>Maximum Estimated Cost:</b>	<b>\$0.00</b>

Record Number:: 27

Priority:

**Alternative \***

**Rec:**  
**(Where Available)**

**Full Rec:** Consult a design professional to determine the feasibility of extending the height of the doorway to provide at least 80 inches clearance height (see CBC 1133B.2.3.1 and ADAAG 4.4.2).

## Visual and Audible Communications

**Finding:** There is no signage with the International Symbol of Accessibility on the entrance door to the facility designating it as accessible.



**Dad's Club**

Citations: CBC 1117B.5.1

Minimum Quantity	1
Maximum Quantity	1
<b>Minimum Estimated Cost:</b>	<b>\$58.00</b>
<b>Maximum Estimated Cost:</b>	<b>\$58.00</b>

Record Number:: 39

Priority:

**Alternative \***

**Rec:**  
**(Where Available)**

**Full Rec:** The International Symbol of Accessibility shall be the standard used to identify facilities that are accessible to and usable by physically disabled persons (see CBC 1117B.5.1). All building entrances that are accessible to and usable by persons with disabilities shall be identified with an ISA symbol (see CBC 1117B.5.7).

**Babe Herman Little League Field**  
**Visual and Audible Communications**

**Finding:** The main entrance does not have accessible signage mounted on the wall adjacent to the latch side of the door.



**Dad's Club**

Citations: CBC 1117B.5; ADAAG 4.30

Minimum Quantity	1
Maximum Quantity	1
<b>Minimum Estimated Cost:</b>	<b>\$58.00</b>
<b>Maximum Estimated Cost:</b>	<b>\$58.00</b>
Record Number::	40
Priority:	

**Full Rec:** Install signage centered at 60 inches above the finished floor on the wall adjacent to the latch side of the entry doorway stating ENTRANCE from the outside and EXIT from the inside, with raised UPPERCASE letters between 5/8 inch and 2 inches in height and Grade 2 Braille characters. The sign shall comply with the finish and contrast requirements set forth in CBC 1117B.5 and ADAAG 4.30.5. Signage should be located where a person may approach within three inches of the sign without encountering protruding objects or standing within the swing of the door.

**Visual and Audible Communications**

**Finding:** The facility does not provide information at the main office about accessible services, such as TDD/TTY machines, assistive listening systems (ALS), and alternative formats of facility materials.



**Dad's Club**

Citations: CBC 1117B.2.9.3; CBC 1104B.2.4; ADAAG 4.30

Minimum Quantity	1
Maximum Quantity	1
<b>Minimum Estimated Cost:</b>	<b>\$58.00</b>
<b>Maximum Estimated Cost:</b>	<b>\$58.00</b>
Record Number::	42
Priority:	

**Full Rec:** Provide information at the office concerning accessible services such as TDD/TTY machines (see CBC 1117B.2.9.3), assistive listening systems (ALS) (see CBC 1104B.2.4), and alternative formats of facility materials. Request forms for auxiliary aids (such as large print materials, signers at public events, etc.), should also be kept at the office. A large-print sign with wording similar to the following should be displayed at the office counter; "Access to individuals with disabilities is provided to facility programs, services and activities. Please inquire if assistance is needed."

**Alternative \***  
**Rec:**  
**(Where Available)**

**Babe Herman Little League Field**  
**Visual and Audible Communications**

**Finding:** Hearing aid compatibility and handset amplification decibel range for telephones available for use by the public (for example, in the main office) could not be determined by visual inspection.

**Alternative \***  
**Rec:**  
**(Where Available)**

**Full Rec:** Determine whether telephones available for use by the public are hearing aid compatible or are equipped with handset amplification. If they are not, modify or replace them with appropriate peripheral devices.



***Dad's Club***

Citations: CBC 1117B.2.8

Minimum Quantity	1
Maximum Quantity	1
<b>Minimum Estimated Cost:</b>	\$0.00
<b>Maximum Estimated Cost:</b>	\$0.00

Record Number:: 43

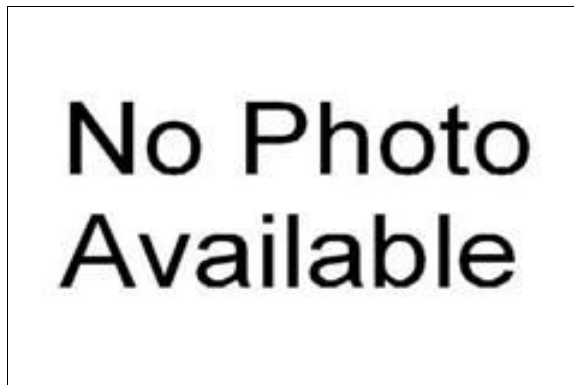
Priority:

**Visual and Audible Communications**

**Finding:** There is no directional signage to the accessible entrance from the public right of way or other common use areas.

**Alternative \***  
**Rec:**  
**(Where Available)**

**Full Rec:** Install directional signage to each common area complying with CBC 1117B.5 and ADAAG 4.30.



***Directional Signage***

Citations: CBC 1117B.5; ADAAG 4.30

Minimum Quantity	1
Maximum Quantity	1
<b>Minimum Estimated Cost:</b>	\$58.00
<b>Maximum Estimated Cost:</b>	\$58.00

Record Number:: 45

Priority:

**Babe Herman Little League Field**  
**Visual and Audible Communications**

**Finding:** Rooms at the Dad's Club do not have accessible signage mounted on the wall adjacent to the latch side of the doors.



**Alternative \***  
**Rec:**  
**(Where Available)**

**Full Rec:** Install accessible signage identifying each room on the wall adjacent to the latch side of the doorway centered at 60 inches above the finished floor. Signage should be located where a person may approach within three inches of the sign without encountering protruding objects or standing within the swing of the door. Signs shall include raised UPPERCASE letters/numbers between 5/8 inch and 2 inches in height and Grade 2 Braille characters. Color and finish shall comply with CBC 1117B.5 and ADAAG 4.30.

**Room Signage**

Citations: CBC 1117B.5; ADAAG 4.30

Minimum Quantity	1
Maximum Quantity	1
<b>Minimum Estimated Cost:</b>	<b>\$58.00</b>
<b>Maximum Estimated Cost:</b>	<b>\$58.00</b>
Record Number::	44
Priority:	

**Restrooms**

**Finding:** There is no signage indicating accessibility on the latch side of the entry door of the restroom. There is no Title 24 gender use signage on the entrance door.



**Alternative \***  
**Rec:**  
**(Where Available)**

**Full Rec:** The restroom is designated accessible and should be made accessible for the facility. Post signage centered 60 inches above the ground surface on the latch side of the entrance door identifying the restroom as accessible upon completion of the following items (see CBC 1115B., ADAAG 4.1.2(7) and ADAAG 4.1.6(3)(e)). Signage shall include Braille and raised lettering, the gender or unisex use symbol and the ISA symbol. Post Title 24 gender use signage on the door @ 60" o.c. a.f.f.

**Men's Restroom Across from the Little League Field**

Citations: CBC 1115B.5; ADAAG 4.1.6; ADAAG 4.1.2(7)); ADAAG 4.1.6(3)(e); ADAAG 4.30

Minimum Quantity	1
Maximum Quantity	1
<b>Minimum Estimated Cost:</b>	<b>\$58.00</b>
<b>Maximum Estimated Cost:</b>	<b>\$58.00</b>
Record Number::	72
Priority:	

## Babe Herman Little League Field

### Restrooms

**Finding:** The urinal in the restroom does not provide a tapered, elongated rim. The height of the urinal rim is greater than 17 inches above the finished floor. The flush control valve on the urinal is greater than 44 inches above the finished floor.

**Alternative \***  
**Rec:**  
 (Where Available)



**Men's Restroom Across from the Little League Field**

**Full Rec:** Replace the urinal designated to be accessible in the restroom with a wall-mounted or stall-type tapered, elongated rim unit complying with ADAAG 4.18.2. The height of the rim surface of the urinal designated to be accessible shall not exceed 17 inches above the finished floor and the flush control valve shall not exceed a height of 44 inches above the finished floor.

Citations: ADAAG 4.18.2

Minimum Quantity	1
Maximum Quantity	1
<b>Minimum Estimated Cost:</b>	<b>\$951.00</b>
<b>Maximum Estimated Cost:</b>	<b>\$951.00</b>

Record Number:: 73

Priority:

### Restrooms

**Finding:** There is insufficient clear floor space in the stall designated to be accessible in the restroom. The door to the stall designated to be accessible in the restroom does not close automatically or have accessible hardware.

**Alternative \***  
**Rec:**  
 (Where Available)



**Men's Restroom Across from the Little League Field**

**Full Rec:** Modify or replace the stall designated to be accessible in the restroom so that it complies with ADAAG 4.17.3, CBC 1115B and CBC Figures 11B-1A and 1B. Standard accessible stalls require 60 inches in width with 56 inches depth for wall-mounted toilets or 59 inches depth for floor-mounted toilets to accommodate individuals in wheelchairs. The minimum width of a front-approach doorway shall provide at least 32 inches and a side-approach doorway shall provide at least 34 inches. The door shall swing outward, close automatically and provide accessible hardware.

Citations: CBC 1115B; ADAAG 4.17.3; ADAAG A4.17.3

Minimum Quantity	1
Maximum Quantity	1
<b>Minimum Estimated Cost:</b>	<b>\$4,000.00</b>
<b>Maximum Estimated Cost:</b>	<b>\$4,000.00</b>

Record Number:: 74

Priority:



## Babe Herman Little League Field

### Restrooms

**Finding:** There is no back grab bar in the stall designated to be accessible in the restroom.

**Alternative \***

**Rec:**  
(Where Available)



**Men's Restroom Across from the Little League Field**

Citations: CBC 1115B.8.1; ADAAG 4.26

**Full Rec:** Install a 36-inch back grab bar at a height of 33 inches above the finished floor in the stall designated to be accessible of the restroom. Grab bars must be able to support a point load of at least 250 pounds and shall be less than the allowable shear stress of the grab bar material.

Minimum Quantity	1
Maximum Quantity	1
<b>Minimum Estimated Cost:</b>	<b>\$531.00</b>
<b>Maximum Estimated Cost:</b>	<b>\$531.00</b>

Record Number:: 75

Priority:

### Restrooms

**Finding:** The height of the side grab bar in the stall designated to be accessible of the restroom is greater than 33 inches above the finished floor.

**Alternative \***

**Rec:**  
(Where Available)



**Men's Restroom Across from the Little League Field**

Citations: CBC 1115B.8.1; ADAAG 4.26

**Full Rec:** Remount the side grab bar in the stall designated to be accessible in the restroom so that the height of the gripping surface is centered at 33 inches above finished floor. Grab bars must be able to support a point load of at least 250 pounds and shall be less than the allowable shear stress of the grab bar material.

Minimum Quantity	1
Maximum Quantity	1
<b>Minimum Estimated Cost:</b>	<b>\$448.00</b>
<b>Maximum Estimated Cost:</b>	<b>\$448.00</b>

Record Number:: 76

Priority:

## Babe Herman Little League Field

### Restrooms

**Finding:** The length of the side grab bar in the stall designated to be accessible in the restroom is less than 42 inches. The side grab bar in the stall designated to be accessible in the restroom does not extend 54 inches from the back wall.



**Men's Restroom Across from the Little League Field**

Citations: CBC 1115B.8.1; ADAAG 4.26

Minimum Quantity	1
Maximum Quantity	1
<b>Minimum Estimated Cost:</b>	\$531.00
<b>Maximum Estimated Cost:</b>	\$531.00
Record Number::	77
Priority:	

**Alternative \***  
**Rec:**  
**(Where Available)**

**Full Rec:** Replace the side grab bar in the stall designated to be accessible in the restroom with a 42-inch/ 48 -inch side grab bar complying with ADAAG 4.26 and CBC 1115B.8. The front end of the grab bar shall extend at least 54 inches from the back wall and the back end of the grab bar shall be mounted within 12 inches from the back wall. Grab bars must be able to support a point load of at least 250 pounds and shall be less than the allowable shear stress of the grab bar material.

### Restrooms

**Finding:** The distance from the end of the side grab bar to the back wall in the stall designated to be accessible in the restroom is greater than 12 inches.



**Men's Restroom Across from the Little League Field**

Citations: CBC 1115B.8.1; ADAAG 4.26

Minimum Quantity	1
Maximum Quantity	1
<b>Minimum Estimated Cost:</b>	\$448.00
<b>Maximum Estimated Cost:</b>	\$448.00
Record Number::	78
Priority:	

**Alternative \***  
**Rec:**  
**(Where Available)**

**Full Rec:** Remount the side grab bar in the stall designated to be accessible in the restroom so that it is not more than 12 inches from the back wall (see ADAAG Figure 29 and CBC 1115B.8). Grab bars must be able to support a point load of at least 250 pounds and shall be less than the allowable shear stress of the grab bar material.

## Babe Herman Little League Field

### Restrooms

**Finding:** The flush control on the toilet in the stall designated to be accessible in the restroom is not on the wide (approach) side of the toilet.



**Men's Restroom Across from the Little League Field**

Citations: ADAAG 4.16.5; ADAAG 4.27.4

Minimum Quantity	1
Maximum Quantity	1
<b>Minimum Estimated Cost:</b>	<b>\$127.00</b>
<b>Maximum Estimated Cost:</b>	<b>\$127.00</b>

Record Number:: 79

Priority:

**Alternative \***

**Rec:**  
**(Where Available)**

**Full Rec:** Relocate the flush control on the toilet in the stall designated to be accessible in the restroom so that it is on the wide (approach) side of the toilet area (see ADAAG 4.16.5). Flush controls shall be hand-operated or automatic mechanisms.

### Restrooms

**Finding:** The distance from the center of the toilet to the nearest side wall in the stall designated to be accessible in the restroom is less than 18 inches.



**Men's Restroom Across from the Little League Field**

Citations: CBC 1115B.7.1.3 ADAAG 4.17.3

Minimum Quantity	1
Maximum Quantity	1
<b>Minimum Estimated Cost:</b>	<b>\$1,143.00</b>
<b>Maximum Estimated Cost:</b>	<b>\$1,143.00</b>

Record Number:: 80

Priority:

**Alternative \***

**Rec:**  
**(Where Available)**

**Full Rec:** Relocate the toilet or stall side wall so that the distance from the centerline of the toilet to the nearest side wall in the stall designated to be accessible in the restroom is exactly 18 inches (see ADAAG Figure 28).

## Babe Herman Little League Field

### Restrooms

**Finding:** The knee clearance space under the lavatory designated to be accessible in the restroom is less than 29 inches. The knee depth space under the lavatory designated to be accessible in the restroom is less than 27 inches at 8 inches under the lavatory apron.

**Alternative \***  
**Rec:**  
**(Where Available)**



**Men's Restroom Across from the Little League Field**

**Full Rec:** Replace the lavatory designated to be accessible in the restroom to provide at least 29 inches of clear knee space between the finished floor and bottom of the lavatory apron. Make sure to provide at least 27 inches at 8 inches under the apron (see ADAAG 4.19.2).

Citations: ADAAG 4.19.2

Minimum Quantity	1
Maximum Quantity	1
<b>Minimum Estimated Cost:</b>	<b>\$1,286.00</b>
<b>Maximum Estimated Cost:</b>	<b>\$1,286.00</b>

Record Number:: 81

Priority:

### Restrooms

**Finding:** The pipes under the lavatory in the restroom do not provide protection against contact.

**Alternative \***  
**Rec:**  
**(Where Available)**



**Men's Restroom Across from the Little League Field**

**Full Rec:** Insulate or otherwise configure pipes under the lavatory designated to be accessible in the restroom to protect against contact (see ADAAG 4.19.4). Make certain there are no sharp or abrasive surfaces under the lavatory.

Citations: ADAAG 4.19.4

Minimum Quantity	1
Maximum Quantity	1
<b>Minimum Estimated Cost:</b>	<b>\$39.00</b>
<b>Maximum Estimated Cost:</b>	<b>\$39.00</b>

Record Number:: 82

Priority:

## Babe Herman Little League Field

### Restrooms

**Finding:** There is no signage indicating accessibility on the latch side of the entry door of the restroom. There is no Title 24 gender use signage on the entrance door.



**Alternative \***

**Rec:**  
(Where Available)

**Men's Restroom at the Dad's Club**

Citations: CBC 1115B.5; ADAAG 4.1.6; ADAAG 4.1.2(7); ADAAG 4.1.6(3)(e); ADAAG 4.30

**Full Rec:** The restroom is designated accessible and should be made accessible for the facility. Post signage centered 60 inches above the ground surface on the latch side of the entrance door identifying the restroom as accessible upon completion of the following items (see CBC 1115B., ADAAG 4.1.2(7) and ADAAG 4.1.6(3)(e). Signage shall include Braille and raised lettering, the gender or unisex use symbol and the ISA symbol. Post Title 24 gender use signage on the door @ 60" o.c. a.f.f.

Minimum Quantity	1
Maximum Quantity	1
<b>Minimum Estimated Cost:</b>	<b>\$58.00</b>
<b>Maximum Estimated Cost:</b>	<b>\$58.00</b>
Record Number::	58
Priority:	

### Restrooms

**Finding:** The door opening force for the interior door is greater than 5 pounds of force.



**Alternative \***

**Rec:**  
(Where Available)

**Men's Restroom at the Dad's Club**

Citations: CBC 1133B.2.5.; ADAAG 4.13.11

**Full Rec:** Adjust the closers on all interior doors to a maximum door opening force of 5 pounds of force (see ADAAG 4.13.11 & CBC 1133B.2.5).

Minimum Quantity	1
Maximum Quantity	1
<b>Minimum Estimated Cost:</b>	<b>\$5.00</b>
<b>Maximum Estimated Cost:</b>	<b>\$5.00</b>
Record Number::	59
Priority:	



## Babe Herman Little League Field

### Restrooms

**Finding:** There is less than 18 inches of latch side clearance from the pull side of the interior entrance door.



**Alternative \***

**Rec:**  
(Where Available)

**Men's Restroom at the Dad's Club**

Citations: ADAAG 4.13.6; CBC 1133B.2.4.2

**Full Rec:** Consult a design professional to determine if it is technically feasible to provide at least 18 inches of latch side clearance at the entrance door from the pull side (see ADAAG 4.13.6 and Figure 25).

Minimum Quantity	1
Maximum Quantity	1
<b>Minimum Estimated Cost:</b>	<b>\$0.00</b>
<b>Maximum Estimated Cost:</b>	<b>\$0.00</b>
Record Number::	60
Priority:	

### Restrooms

**Finding:** There is insufficient clear floor space in the stall designated to be accessible in the restroom. The door to the stall designated to be accessible in the restroom does not close automatically or have accessible hardware.



**Men's Restroom at the Dad's Club**

Citations: CBC 1115B; ADAAG 4.17.3; ADAAG A4.17.3

**Alternative \***

**Rec:**  
(Where Available)

**Full Rec:** Modify or replace the stall designated to be accessible in the restroom so that it complies with ADAAG 4.17.3, CBC 1115B and CBC Figures 11B-1A and 1B. Standard accessible stalls require 60 inches in width with 56 inches depth for wall-mounted toilets or 59 inches depth for floor-mounted toilets to accommodate individuals in wheelchairs. The minimum width of a front-approach doorway shall provide at least 32 inches and a side-approach doorway shall provide at least 34 inches. The door shall swing outward, close automatically and provide accessible hardware.

Minimum Quantity	1
Maximum Quantity	1
<b>Minimum Estimated Cost:</b>	<b>\$4,000.00</b>
<b>Maximum Estimated Cost:</b>	<b>\$4,000.00</b>
Record Number::	61
Priority:	

## Babe Herman Little League Field

### Restrooms

**Finding:** The height of the coat hook on the stall door designated to be accessible in the restroom is greater than 48 inches above the floor surface.

**Alternative \***

**Rec:**  
(Where Available)

**Full Rec:** Remount the coat hook on the stall door designated to be accessible in the restroom to a maximum height of 48 inches above the floor surface.



**Men's Restroom at the Dad's Club**

Citations: CBC 1115B.9.2; ADAAG A4.27

Minimum Quantity	1
Maximum Quantity	1
<b>Minimum Estimated Cost:</b>	\$277.00
<b>Maximum Estimated Cost:</b>	\$277.00
Record Number::	62
Priority:	

### Restrooms

**Finding:** There is no back grab bar in the stall designated to be accessible in the restroom.

**Alternative \***

**Rec:**  
(Where Available)

**Full Rec:** Install a 36-inch back grab bar at a height of 33 inches above the finished floor in the stall designated to be accessible of the restroom. Grab bars must be able to support a point load of at least 250 pounds and shall be less than the allowable shear stress of the grab bar material.



**Men's Restroom at the Dad's Club**

Citations: CBC 1115B.8.1; ADAAG 4.26

Minimum Quantity	1
Maximum Quantity	1
<b>Minimum Estimated Cost:</b>	\$531.00
<b>Maximum Estimated Cost:</b>	\$531.00
Record Number::	63
Priority:	

## Babe Herman Little League Field

### Restrooms

**Finding:** The height of the side grab bar in the stall designated to be accessible of the restroom is greater than 33 inches above the finished floor.



**Men's Restroom at the Dad's Club**

Citations: CBC 1115B.8.1; ADAAG 4.26

Minimum Quantity	1
Maximum Quantity	1
<b>Minimum Estimated Cost:</b>	\$448.00
<b>Maximum Estimated Cost:</b>	\$448.00

Record Number:: 64

Priority:

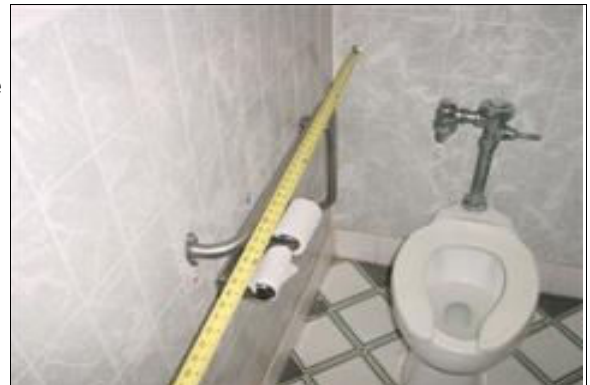
#### Alternative \*

**Rec:**  
(Where Available)

**Full Rec:** Remount the side grab bar in the stall designated to be accessible in the restroom so that the height of the gripping surface is centered at 33 inches above finished floor. Grab bars must be able to support a point load of at least 250 pounds and shall be less than the allowable shear stress of the grab bar material.

### Restrooms

**Finding:** The length of the side grab bar in the stall designated to be accessible in the restroom is less than 42 inches. The side grab bar in the stall designated to be accessible in the restroom does not extend 54 inches from the back wall.



**Men's Restroom at the Dad's Club**

Citations: CBC 1115B.8.1; ADAAG 4.26

Minimum Quantity	1
Maximum Quantity	1
<b>Minimum Estimated Cost:</b>	\$531.00
<b>Maximum Estimated Cost:</b>	\$531.00

Record Number:: 65

Priority:

#### Alternative \*

**Rec:**  
(Where Available)

**Full Rec:** Replace the side grab bar in the stall designated to be accessible in the restroom with a 42-inch/ 48 -inch side grab bar complying with ADAAG 4.26 and CBC 1115B.8. The front end of the grab bar shall extend at least 54 inches from the back wall and the back end of the grab bar shall be mounted within 12 inches from the back wall. Grab bars must be able to support a point load of at least 250 pounds and shall be less than the allowable shear stress of the grab bar material.

## Babe Herman Little League Field

### Restrooms

**Finding:** The seat cover dispenser in the stall designated to be accessible in the restroom is mounted at a height greater than 40 inches.



**Men's Restroom at the Dad's Club**

Citations: CBC 1115B.9.2

Minimum Quantity	1
Maximum Quantity	1
<b>Minimum Estimated Cost:</b>	<b>\$277.00</b>
<b>Maximum Estimated Cost:</b>	<b>\$277.00</b>

Record Number:: 66

Priority:

**Alternative \***

**Rec:  
(Where Available)**

**Full Rec:** Relocate the seat cover dispenser in the stall designated to be accessible in the restroom so that the height is no greater than 40 inches above the finished floor (see CBC 1115B.9.2). Make certain that the location of the seat cover dispenser does not interfere with the use of a grab bar and provides sufficient clear floor space.

### Restrooms

**Finding:** The faucet controls on the lavatory in the restroom require tight grasping, pinching, or twisting of the wrist and are not accessible.



**Men's Restroom at the Dad's Club**

Citations: ADAAG 4.19.5

Minimum Quantity	1
Maximum Quantity	1
<b>Minimum Estimated Cost:</b>	<b>\$392.00</b>
<b>Maximum Estimated Cost:</b>	<b>\$392.00</b>

Record Number:: 67

Priority:

**Alternative \***

**Rec:  
(Where Available)**

**Full Rec:** Install faucet controls complying with ADAAG 4.19.5 on the lavatory designated to be accessible in the restroom. Lever-operated, push-type, touch-type or electronically controlled mechanisms are acceptable elements (see ADAAG 4.19.5). If self-closing valves are used the faucet shall remain open for at least 10 seconds.

# Babe Herman Little League Field

## Restrooms

**Finding:** The lavatory in the restroom is in an enclosed cabinet, thereby preventing an accessible forward approach.



**Men's Restroom at the Dad's Club**

Citations: ADAAG 4.19.2

**Alternative \***  
**Rec:**  
**(Where Available)**

**Full Rec:** Lavatories in restrooms must provide clear floor space in front of the lavatory for an accessible forward approach and shall provide at least 29 inches clear knee space and a minimum of nine inches clear toe space (see ADAAG 4.19.2). If neither clear floor space and knee and toe clearance can be provided, remove the lavatory cabinet and replace with an accessible wall-mounted lavatory unit.

Minimum Quantity	1
Maximum Quantity	1
<b>Minimum Estimated Cost:</b>	\$420.00
<b>Maximum Estimated Cost:</b>	\$420.00
Record Number::	68
Priority:	

## Restrooms

**Finding:** The pipes under the lavatory in the restroom do not provide protection against contact.



**Men's Restroom at the Dad's Club**

Citations: ADAAG 4.19.4

**Alternative \***  
**Rec:**  
**(Where Available)**

**Full Rec:** Insulate or otherwise configure pipes under the lavatory designated to be accessible in the restroom to protect against contact (see ADAAG 4.19.4). Make certain there are no sharp or abrasive surfaces under the lavatory.

Minimum Quantity	1
Maximum Quantity	1
<b>Minimum Estimated Cost:</b>	\$39.00
<b>Maximum Estimated Cost:</b>	\$39.00
Record Number::	69
Priority:	



## Babe Herman Little League Field

### Restrooms

**Finding:** The height of the controls and operating mechanisms for the soap dispenser in the restroom is greater than 40 inches.



**Men's Restroom at the Dad's Club**

Citations: CBC 1115B.9.2; ADAAG A4.27

Minimum Quantity	1
Maximum Quantity	1
<b>Minimum Estimated Cost:</b>	\$277.00
<b>Maximum Estimated Cost:</b>	\$277.00
Record Number::	70
Priority:	

#### Alternative \*

**Rec:**  
(Where Available)

**Full Rec:** Relocate the soap dispenser in the restroom to a maximum height of 40 inches for all the controls and operating mechanisms (see CBC 1115B.9.2).

### Restrooms

**Finding:** The height of the controls and operating mechanisms for the paper towel dispenser in the restroom is greater than 40 inches.



**Men's Restroom at the Dad's Club**

Citations: CBC 1115B.9.2; ADAAG A4.27

Minimum Quantity	1
Maximum Quantity	1
<b>Minimum Estimated Cost:</b>	\$277.00
<b>Maximum Estimated Cost:</b>	\$277.00
Record Number::	71
Priority:	

#### Alternative \*

**Rec:**  
(Where Available)

**Full Rec:** Relocate the paper towel dispenser in the restroom to a maximum height of 40 inches for all the controls and operating mechanisms (see CBC 1115B.9.2).

## Babe Herman Little League Field

### Restrooms

**Finding:** There is no signage indicating accessibility on the latch side of the entry door of the restroom. There is no Title 24 gender use signage on the entrance door.

**Alternative \***

**Rec:**  
(Where Available)

**Full Rec:** The restroom is designated accessible and should be made accessible for the facility. Post signage centered 60 inches above the ground surface on the latch side of the entrance door identifying the restroom as accessible upon completion of the following items (see CBC 1115B., ADAAG 4.1.2(7) and ADAAG 4.1.6(3)(e). Signage shall include Braille and raised lettering, the gender or unisex use symbol and the ISA symbol. Post Title 24 gender use signage on the door @ 60" o.c. a.f.f.



**Women's Restroom Across from the Little League Field**

Citations: CBC 1115B.5; ADAAG 4.1.6; ADAAG 4.1.2(7); ADAAG 4.1.6(3)(e); ADAAG 4.30

Minimum Quantity	1
Maximum Quantity	1
<b>Minimum Estimated Cost:</b>	<b>\$58.00</b>
<b>Maximum Estimated Cost:</b>	<b>\$58.00</b>
Record Number::	83
Priority:	

### Restrooms

**Finding:** The height of the threshold at the entrance door is greater than 1/2 inch.

**Alternative \***

**Rec:**  
(Where Available)

**Full Rec:** Modify or replace the threshold to provide a smooth transition. The threshold should not exceed a beveled 1/2 inch. Provide a 60 inch level landing in the direction of the door swing.



**Women's Restroom Across from the Little League Field**

Citations: CBC 1133B.2.4.1; ADAAG 4.1.6(3)(d)(ii); ADAAG 4.5.2

Minimum Quantity	1
Maximum Quantity	1
<b>Minimum Estimated Cost:</b>	<b>\$2,500.00</b>
<b>Maximum Estimated Cost:</b>	<b>\$2,500.00</b>
Record Number::	84
Priority:	

# Babe Herman Little League Field

## Restrooms

**Finding:** There is insufficient clear floor space in the stall designated to be accessible in the restroom. The stall door to the stall designated to be accessible in the restroom swings inward limiting the clear floor space in the stall designated to be accessible. The door to the stall designated to be accessible in the restroom does not close automatically or have accessible hardware.

**Alternative \***  
**Rec:**  
 (Where Available)



**Women's Restroom Across from the Little League Field**

Citations: CBC 1115B; ADAAG 4.17.3; ADAAG A4.17.3

Minimum Quantity	1
Maximum Quantity	1
<b>Minimum Estimated Cost:</b>	<b>\$4,000.00</b>
<b>Maximum Estimated Cost:</b>	<b>\$4,000.00</b>
Record Number::	85
Priority:	

**Full Rec:** Modify or replace the stall designated to be accessible in the restroom so that it complies with ADAAG 4.17.3, CBC 1115B and CBC Figures 11B-1A and 1B. Standard accessible stalls require 60 inches in width with 56 inches depth for wall-mounted toilets or 59 inches depth for floor-mounted toilets to accommodate individuals in wheelchairs. The minimum width of a front-approach doorway shall provide at least 32 inches and a side-approach doorway shall provide at least 34 inches. The door shall swing outward, close automatically and provide accessible hardware.

## Restrooms

**Finding:** There is no back grab bar in the stall designated to be accessible in the restroom.



**Women's Restroom Across from the Little League Field**

Citations: CBC 1115B.8.1; ADAAG 4.26

Minimum Quantity	1
Maximum Quantity	1
<b>Minimum Estimated Cost:</b>	<b>\$531.00</b>
<b>Maximum Estimated Cost:</b>	<b>\$531.00</b>
Record Number::	86
Priority:	

**Alternative \***  
**Rec:**  
 (Where Available)

**Full Rec:** Install a 36-inch back grab bar at a height of 33 inches above the finished floor in the stall designated to be accessible of the restroom. Grab bars must be able to support a point load of at least 250 pounds and shall be less than the allowable shear stress of the grab bar material.

## Babe Herman Little League Field

### Restrooms

**Finding:** The height of the side grab bar in the stall designated to be accessible of the restroom is less than 33 inches above the finished floor.



**Women's Restroom Across from the Little League Field**

Citations: CBC 1115B.8.1; ADAAG 4.26

Minimum Quantity	1
Maximum Quantity	1
<b>Minimum Estimated Cost:</b>	<b>\$448.00</b>
<b>Maximum Estimated Cost:</b>	<b>\$448.00</b>

Record Number:: 87

Priority:

#### Alternative \*

**Rec:**  
(Where Available)

**Full Rec:** Remount the side grab bar in the stall designated to be accessible in the restroom so that the height of the gripping surface is centered at 33 inches above finished floor. Grab bars must be able to support a point load of at least 250 pounds and shall be less than the allowable shear stress of the grab bar material.

### Restrooms

**Finding:** The length of the side grab bar in the stall designated to be accessible in the restroom is less than 42 inches. The side grab bar in the stall designated to be accessible in the restroom does not extend 54 inches from the back wall.



**Women's Restroom Across from the Little League Field**

Citations: CBC 1115B.8.1; ADAAG 4.26

Minimum Quantity	1
Maximum Quantity	1
<b>Minimum Estimated Cost:</b>	<b>\$531.00</b>
<b>Maximum Estimated Cost:</b>	<b>\$531.00</b>

Record Number:: 88

Priority:

#### Alternative \*

**Rec:**  
(Where Available)

**Full Rec:** Replace the side grab bar in the stall designated to be accessible in the restroom with a 42-inch/ 48 -inch side grab bar complying with ADAAG 4.26 and CBC 1115B.8. The front end of the grab bar shall extend at least 54 inches from the back wall and the back end of the grab bar shall be mounted within 12 inches from the back wall. Grab bars must be able to support a point load of at least 250 pounds and shall be less than the allowable shear stress of the grab bar material.

## Babe Herman Little League Field

### Restrooms

**Finding:** The distance from the end of the side grab bar to the back wall in the stall designated to be accessible in the restroom is greater than 12 inches.



**Women's Restroom Across from the Little League Field**

Citations: CBC 1115B.8.1; ADAAG 4.26

Minimum Quantity	1
Maximum Quantity	1
<b>Minimum Estimated Cost:</b>	<b>\$448.00</b>
<b>Maximum Estimated Cost:</b>	<b>\$448.00</b>

Record Number:: 89

Priority:

**Alternative \***

**Rec:**  
**(Where Available)**

**Full Rec:** Remount the side grab bar in the stall designated to be accessible in the restroom so that it is not more than 12 inches from the back wall (see ADAAG Figure 29 and CBC 1115B.8). Grab bars must be able to support a point load of at least 250 pounds and shall be less than the allowable shear stress of the grab bar material.

### Restrooms

**Finding:** The distance from the center of the toilet to the nearest side wall in the stall designated to be accessible in the restroom is less than 18 inches.



**Women's Restroom Across from the Little League Field**

Citations: CBC 1115B.7.1.3 ADAAG 4.17.3

Minimum Quantity	1
Maximum Quantity	1
<b>Minimum Estimated Cost:</b>	<b>\$1,143.00</b>
<b>Maximum Estimated Cost:</b>	<b>\$1,143.00</b>

Record Number:: 90

Priority:

**Alternative \***

**Rec:**  
**(Where Available)**

**Full Rec:** Relocate the toilet or stall side wall so that the distance from the centerline of the toilet to the nearest side wall in the stall designated to be accessible in the restroom is exactly 18 inches (see ADAAG Figure 28).



## Babe Herman Little League Field

### Restrooms

**Finding:** The knee clearance space under the lavatory designated to be accessible in the restroom is less than 29 inches. The knee depth space under the lavatory designated to be accessible in the restroom is less than 27 inches at 8 inches under the lavatory apron.

**Alternative \***

**Rec:**  
(Where Available)



**Women's Restroom Across from the Little League Field**

**Full Rec:** Replace the lavatory designated to be accessible in the restroom to provide at least 29 inches of clear knee space between the finished floor and bottom of the lavatory apron. Make sure to provide at least 27 inches at 8 inches under the apron (see ADAAG 4.19.2).

Citations: ADAAG 4.19.2

Minimum Quantity	1
Maximum Quantity	1
<b>Minimum Estimated Cost:</b>	<b>\$1,286.00</b>
<b>Maximum Estimated Cost:</b>	<b>\$1,286.00</b>

Record Number:: 91

Priority:

### Restrooms

**Finding:** The pipes under the lavatory in the restroom do not provide protection against contact.

**Alternative \***

**Rec:**  
(Where Available)



**Women's Restroom Across from the Little League Field**

**Full Rec:** Insulate or otherwise configure pipes under the lavatory designated to be accessible in the restroom to protect against contact (see ADAAG 4.19.4). Make certain there are no sharp or abrasive surfaces under the lavatory.

Citations: ADAAG 4.19.4

Minimum Quantity	1
Maximum Quantity	1
<b>Minimum Estimated Cost:</b>	<b>\$39.00</b>
<b>Maximum Estimated Cost:</b>	<b>\$39.00</b>

Record Number:: 92

Priority:

## Babe Herman Little League Field

### Restrooms

**Finding:** There is no signage indicating accessibility on the latch side of the entry door of the restroom. There is no Title 24 gender use signage on the entrance door.



#### **Women's Restroom at the Dad's Club**

Citations: CBC 1115B.5; ADAAG 4.1.6; ADAAG 4.1.2(7); ADAAG 4.1.6(3)(e); ADAAG 4.30

Minimum Quantity	1
Maximum Quantity	1
<b>Minimum Estimated Cost:</b>	\$58.00
<b>Maximum Estimated Cost:</b>	\$58.00
Record Number::	46
Priority:	

#### Alternative \*

**Rec:**  
(Where Available)

**Full Rec:** The restroom is designated accessible and should be made accessible for the facility. Post signage centered 60 inches above the ground surface on the latch side of the entrance door identifying the restroom as accessible upon completion of the following items (see CBC 1115B., ADAAG 4.1.2(7) and ADAAG 4.1.6(3)(e). Signage shall include Braille and raised lettering, the gender or unisex use symbol and the ISA symbol. Post Title 24 gender use signage on the door @ 60" o.c. a.f.f.

### Restrooms

**Finding:** The door opening force for the interior door is greater than 5 pounds of force.



#### **Women's Restroom at the Dad's Club**

Citations: CBC 1133B.2.5.; ADAAG 4.13.11

Minimum Quantity	1
Maximum Quantity	1
<b>Minimum Estimated Cost:</b>	\$5.00
<b>Maximum Estimated Cost:</b>	\$5.00
Record Number::	47
Priority:	

#### Alternative \*

**Rec:**  
(Where Available)

**Full Rec:** Adjust the closers on all interior doors to a maximum door opening force of 5 pounds of force (see ADAAG 4.13.11 & CBC 1133B.2.5).

## Babe Herman Little League Field

### Restrooms

**Finding:** There is less than 18 inches of latch side clearance from the pull side of the interior entrance door.



**Women's Restroom at the Dad's Club**

Citations: ADAAG 4.13.6; CBC 1133B.2.4.2

Minimum Quantity	1
Maximum Quantity	1
<b>Minimum Estimated Cost:</b>	\$0.00
<b>Maximum Estimated Cost:</b>	\$0.00

Record Number:: 48

Priority:

#### Alternative \*

**Rec:**  
(Where Available)

**Full Rec:** Consult a design professional to determine if it is technically feasible to provide at least 18 inches of latch side clearance at the entrance door from the pull side (see ADAAG 4.13.6 and Figure 25).

### Restrooms

**Finding:** There is insufficient clear floor space in the stall designated to be accessible in the restroom. The door to the stall designated to be accessible in the restroom does not close automatically.



**Women's Restroom at the Dad's Club**

Citations: CBC 1115B; ADAAG 4.17.3; ADAAG A4.17.3

Minimum Quantity	1
Maximum Quantity	1
<b>Minimum Estimated Cost:</b>	\$4,000.00
<b>Maximum Estimated Cost:</b>	\$4,000.00

Record Number:: 49

Priority:

#### Alternative \*

**Rec:**  
(Where Available)

**Full Rec:** Modify or replace the stall designated to be accessible in the restroom so that it complies with ADAAG 4.17.3, CBC 1115B and CBC Figures 11B-1A and 1B. Standard accessible stalls require 60 inches in width with 56 inches depth for wall-mounted toilets or 59 inches depth for floor-mounted toilets to accommodate individuals in wheelchairs. The minimum width of a front-approach doorway shall provide at least 32 inches and a side-approach doorway shall provide at least 34 inches. The door shall swing outward, close automatically and provide accessible hardware.

## Babe Herman Little League Field

### Restrooms

**Finding:** The height of the coat hook on the stall door designated to be accessible in the restroom is greater than 48 inches above the floor surface.

**Alternative \***

**Rec:**  
(Where Available)

**Full Rec:** Remount the coat hook on the stall door designated to be accessible in the restroom to a maximum height of 48 inches above the floor surface.



**Women's Restroom at the Dad's Club**

Citations: CBC 1115B.9.2; ADAAG A4.27

Minimum Quantity	1
Maximum Quantity	1
<b>Minimum Estimated Cost:</b>	<b>\$277.00</b>
<b>Maximum Estimated Cost:</b>	<b>\$277.00</b>
Record Number::	50
Priority:	

### Restrooms

**Finding:** There is no back grab bar in the stall designated to be accessible in the restroom.

**Alternative \***

**Rec:**  
(Where Available)

**Full Rec:** Install a 36-inch back grab bar at a height of 33 inches above the finished floor in the stall designated to be accessible of the restroom. Grab bars must be able to support a point load of at least 250 pounds and shall be less than the allowable shear stress of the grab bar material.



**Women's Restroom at the Dad's Club**

Citations: CBC 1115B.8.1; ADAAG 4.26

Minimum Quantity	1
Maximum Quantity	1
<b>Minimum Estimated Cost:</b>	<b>\$531.00</b>
<b>Maximum Estimated Cost:</b>	<b>\$531.00</b>
Record Number::	51
Priority:	

## Babe Herman Little League Field

### Restrooms

**Finding:** The side grab bar in the stall designated to be accessible in the restroom does not extend 54 inches from the back wall.



**Women's Restroom at the Dad's Club**

Citations: CBC 1115B.8.1; ADAAG 4.26

**Alternative \***  
**Rec:**  
**(Where Available)**

**Full Rec:** The front end of the grab bar shall extend at least 54 inches from the back wall and the back end of the grab bar shall be mounted within 12 inches from the back wall. Grab bars must be able to support a point load of at least 250 pounds and shall be less than the allowable shear stress of the grab bar material.

Minimum Quantity	1
Maximum Quantity	1
<b>Minimum Estimated Cost:</b>	\$531.00
<b>Maximum Estimated Cost:</b>	\$531.00

Record Number:: 52

Priority:

### Restrooms

**Finding:** The seat cover dispenser in the stall designated to be accessible in the restroom is mounted at a height greater than 40 inches.



**Women's Restroom at the Dad's Club**

Citations: CBC 1115B.9.2

**Alternative \***  
**Rec:**  
**(Where Available)**

**Full Rec:** Relocate the seat cover dispenser in the stall designated to be accessible in the restroom so that the height is no greater than 40 inches above the finished floor (see CBC 1115B.9.2). Make certain that the location of the seat cover dispenser does not interfere with the use of a grab bar and provides sufficient clear floor space.

Minimum Quantity	1
Maximum Quantity	1
<b>Minimum Estimated Cost:</b>	\$277.00
<b>Maximum Estimated Cost:</b>	\$277.00

Record Number:: 53

Priority:

## Babe Herman Little League Field

### Restrooms

**Finding:** The pipes under the lavatory in the restroom do not provide protection against contact.

**Alternative \***

**Rec:**  
(Where Available)

**Full Rec:** Insulate or otherwise configure pipes under the lavatory designated to be accessible in the restroom to protect against contact (see ADAAG 4.19.4). Make certain there are no sharp or abrasive surfaces under the lavatory.



**Women's Restroom at the Dad's Club**

Citations: ADAAG 4.19.4

Minimum Quantity	1
Maximum Quantity	1
<b>Minimum Estimated Cost:</b>	<b>\$39.00</b>
<b>Maximum Estimated Cost:</b>	<b>\$39.00</b>

Record Number:: 54

Priority:

### Restrooms

**Finding:** The bottom edge of the reflecting surface of the mirror in the restroom is greater than 40 inches above the finished floor.

**Alternative \***

**Rec:**  
(Where Available)

**Full Rec:** Lower the mirror in the restroom so that the bottom edge of the reflecting surface is no higher than 40 inches above the finished floor and the topmost portion of the reflecting surface extends at least 74 inches above the finished floor (see ADAAG A4.19.6). A single, full-length mirror is recommended since it can accommodate all people. Make certain to provide a minimum clear floor space in front of the mirror of 30 inches in width and 48 inches in length.



**Women's Restroom at the Dad's Club**

Citations: ADAAG A4.19.6; CBC 1115B.9.1.2; ADAAG 4.19.6

Minimum Quantity	1
Maximum Quantity	1
<b>Minimum Estimated Cost:</b>	<b>\$291.00</b>
<b>Maximum Estimated Cost:</b>	<b>\$291.00</b>

Record Number:: 55

Priority:



## Babe Herman Little League Field

### Restrooms

**Finding:** The height of the controls and operating mechanisms for the soap dispenser in the restroom is greater than 40 inches.



**Women's Restroom at the Dad's Club**

Citations: CBC 1115B.9.2; ADAAG A4.27

Minimum Quantity	1
Maximum Quantity	1
<b>Minimum Estimated Cost:</b>	\$277.00
<b>Maximum Estimated Cost:</b>	\$277.00

Record Number:: 56

Priority:

#### Alternative \*

**Rec:**  
**(Where Available)**

**Full Rec:** Relocate the soap dispenser in the restroom to a maximum height of 40 inches for all the controls and operating mechanisms (see CBC 1115B.9.2).

### Restrooms

**Finding:** The height of the controls and operating mechanisms for the paper towel dispenser in the restroom is greater than 40 inches.



**Women's Restroom at the Dad's Club**

Citations: CBC 1115B.9.2; ADAAG A4.27

Minimum Quantity	1
Maximum Quantity	1
<b>Minimum Estimated Cost:</b>	\$277.00
<b>Maximum Estimated Cost:</b>	\$277.00

Record Number:: 57

Priority:

#### Alternative \*

**Rec:**  
**(Where Available)**

**Full Rec:** Relocate the paper towel dispenser in the restroom to a maximum height of 40 inches for all the controls and operating mechanisms (see CBC 1115B.9.2).

# Babe Herman Little League Field

## Drinking Fountains

**Finding:** There are two drinking fountains on primary paths of travel.



**Alternative \***

**Rec:**  
(Where Available)

**Full Rec:** Fifty percent of the drinking fountains on primary paths of travel shall be accessible (see CBC 1117B.1 and ADAAG 4.15). Install a "high-low" fountain design to comply with both state and federal requirement. Fountains not located in alcoves need side rails or wing walls on both sides.

Citations: CBC 1117B.1; ADAAG 4.15

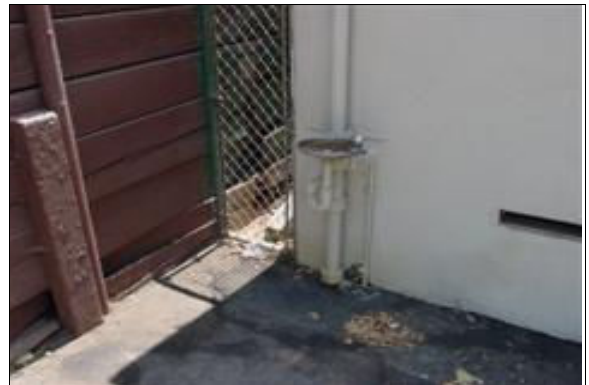
Minimum Quantity	1
Maximum Quantity	1
<b>Minimum Estimated Cost:</b>	<b>\$0.00</b>
<b>Maximum Estimated Cost:</b>	<b>\$0.00</b>

Record Number:: 22

Priority:

## Drinking Fountains

**Finding:** The drinking fountain is not a "high-low" design. The spout outlet height is greater than 36 inches. There is less than 27 inches knee clearance height. There is less than 18 inches fountain clearance depth. The height of the water stream is less than 4 inches.



**Drinking Fountain Outside of the Press Box (Left)**

**Alternative \***

**Rec:**  
(Where Available)

**Full Rec:** Fifty percent of the drinking fountains on primary paths of travel shall be accessible (see CBC 1117B.1 and ADAAG 4.15). Install a "high-low" fountain design to comply with both state and federal requirements and install a side rail or wing wall next to each side of the fountain. Provide at least 30 inches in width and 48 inches in depth in front of the drinking fountain. The height of the spout outlet shall not exceed 36 inches in height. Fountain controls shall be accessible. The spout shall direct the water flow at least 4 inches high and in a trajectory that is parallel or nearly parallel to the front of the drinking fountain. Wall-mounted drinking fountains shall provide a minimum knee clearance height of 27 inches, 30 inches in width and between 18 inches and 19 inches in fountain depth.

Citations: CBC 1117B.1; ADAAG 4.15

Minimum Quantity	1
Maximum Quantity	1
<b>Minimum Estimated Cost:</b>	<b>\$2,216.00</b>
<b>Maximum Estimated Cost:</b>	<b>\$2,216.00</b>

Record Number:: 26

Priority:

## Babe Herman Little League Field

### Drinking Fountains

**Finding:** The drinking fountain is not a "high-low" design. There is less than 27 inches knee clearance height.



**Drinking Fountain Outside of the Press Box (Right)**

Citations: CBC 1117B.1; ADAAG 4.15

Minimum Quantity	1
Maximum Quantity	1
<b>Minimum Estimated Cost:</b>	<b>\$2,216.00</b>
<b>Maximum Estimated Cost:</b>	<b>\$2,216.00</b>
Record Number::	23
Priority:	

**Full Rec:** Fifty percent of the drinking fountains on primary paths of travel shall be accessible (see CBC 1117B.1 and ADAAG 4.15). Install a "high-low" fountain design to comply with both state and federal requirements and install a side rail or wing wall next to each side of the fountain. Wall-mounted drinking fountains shall provide a minimum knee clearance height of 27 inches, 30 inches in width and between 18 inches and 19 inches in fountain depth.

### Playground and Outdoor Sports Areas

**Finding:** The grass and dirt surface of the baseball field at the facility prevents access to individuals with mobility impairments.



**Little League Field**

Citations: CBC 1104B.1.2; CBC 1124B.1; ADAAG 4.33

Minimum Quantity	1
Maximum Quantity	1
<b>Minimum Estimated Cost:</b>	<b>\$360.00</b>
<b>Maximum Estimated Cost:</b>	<b>\$360.00</b>
Record Number::	11
Priority:	

**Full Rec:** Provide an accessible route to the baseball field area where programs, services and activities are provided. The minimum width of the path of travel is 48 inches with 60 inch by 60 inch passing spaces provided every 200 feet. No protruding objects are permitted on the accessible path of travel. Accessible surfaces shall be firm, stable and slip resistant.

**Alternative \***  
**Rec:**  
**(Where Available)**

## Babe Herman Little League Field Playground and Outdoor Sports Areas

**Finding:** The surface under the bleachers is concrete. No wheelchair seating is provided next to the bleachers.



**Little League Field**

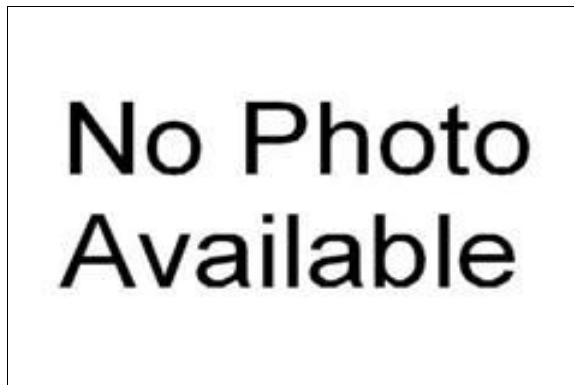
Citations: CBC 1104B.4; ADAAG 4.33

Minimum Quantity	1
Maximum Quantity	1
<b>Minimum Estimated Cost:</b>	\$237.00
<b>Maximum Estimated Cost:</b>	\$237.00
Record Number::	12
Priority:	

**Full Rec:** Provide accessible wheelchair seating areas adjacent to the bleachers with equivalent line of sight as provided to members of the general public, if technically feasible; otherwise provide accessible wheelchair seating areas adjacent to the bleachers where unobstructed sight lines can be provided (see CBC 1104B.4 and ADAAG 4.33.3). The wheelchair seating area should be outlined, and have the International Symbol of Accessibility to reserve it for wheelchair users.

## Playground and Outdoor Sports Areas

**Finding:** There is no signage at the ticket counter indicating the availability of accessible seating.



**Little League Field**

Citations: CBC 1104B.3.4.1; ADAAG 4.1.3(19)

Minimum Quantity	1
Maximum Quantity	1
<b>Minimum Estimated Cost:</b>	\$107.00
<b>Maximum Estimated Cost:</b>	\$107.00
Record Number::	13
Priority:	

**Full Rec:** Post signage at the ticket counter indicating the availability and location of accessible seating areas (see CBC 1104B.3.4.1).

**Alternative \***  
**Rec:**  
**(Where Available)**

## Babe Herman Little League Field Playground and Outdoor Sports Areas

**Finding:** The height of the concession counter at the Little League field is greater than 36 inches.



**Little League Field**

Citations: ADAAG 7.2

Minimum Quantity	1
Maximum Quantity	1
<b>Minimum Estimated Cost:</b>	\$129.00
<b>Maximum Estimated Cost:</b>	\$129.00

Record Number:: 15

Priority:

### Alternative \*

**Rec:**  
**(Where Available)**

**Full Rec:** Lower the concession counter to a height between 28 inches and 36 inches above the ground level (see ADAAG 7.2).

## Playground and Outdoor Sports Areas

**Finding:** There are cross slopes greater than 2% on the primary path of travel to the concession counter at the Little League field.



**Little League Field**

Citations: CBC 1133B.7.1.3; CBC 1133B.7.3; ADAAG 4.3.7

Minimum Quantity	1
Maximum Quantity	1
<b>Minimum Estimated Cost:</b>	\$1,440.00
<b>Maximum Estimated Cost:</b>	\$1,440.00

Record Number:: 16

Priority:

### Alternative \*

**Rec:**  
**(Where Available)**

**Full Rec:** Resurface the path of travel to provide a level surface that does not exceed a slope greater than 5%. Cross slopes shall not exceed 2%.



## Babe Herman Little League Field Playground and Outdoor Sports Areas

**Finding:** The press box is stair-access only and is not accessible to individuals with mobility impairments.



**Little League Field**

**Alternative Rec:** There are ways to provide access to the programs, services and activities at the press box without installing accessible vertical means to the press box area, to include electronic relay devices with electronic visual components (video camera or television) that offer the equivalent sight line provided from inside the press box. The electronic relays may be cabled to an accessible location where individuals with mobility impairments can access.

**Full Rec:** In most instances, press boxes are built and used by volunteers and the public, which mandates that access for individuals with disabilities be provided. This is difficult in most situations with the location of the press box usually located high above the assembly area. Vertical access may include installing an exterior enclosed platform lift or installing an equivalent press box at ground level with electronic relay devices and equipment that would provide the same line of sight viewing capability as that in the elevated press box.

Citations:

Minimum Quantity	1
Maximum Quantity	1
<b>Minimum Estimated Cost:</b>	\$0.00
<b>Maximum Estimated Cost:</b>	\$0.00

Record Number:: 17

Priority:

## Playground and Outdoor Sports Areas

**Finding:** There is a step on the primary path of travel to the dugouts, at the right, at the Little League field, preventing access to individuals with mobility impairments.



**Little League Field**

**Alternative \***

**Rec:**  
**(Where Available)**

**Full Rec:** Since programs, services and activities to staff and the public (volunteers, etc.) are provided in this location, those programs, services and activities are required to be made accessible. It is recommended that a ramp be installed or other means of vertical access.

Citations: CBC 1114B.1.2; CBC 1133B.7.4; ADAAG 4.3.8

Minimum Quantity	1
Maximum Quantity	1
<b>Minimum Estimated Cost:</b>	\$9,515.00
<b>Maximum Estimated Cost:</b>	\$9,515.00

Record Number:: 24

Priority:



## Babe Herman Little League Field Playground and Outdoor Sports Areas

**Finding:** The path of travel to the dugouts at the Little League field is dirt, preventing access to individuals with mobility impairments.



**Little League Field**

Citations: CBC 1114B.1.2; ADAAG 4.3.6

Minimum Quantity	1
Maximum Quantity	1
<b>Minimum Estimated Cost:</b>	\$1,440.00
<b>Maximum Estimated Cost:</b>	\$1,440.00
Record Number::	25
Priority:	

**Alternative \***  
**Rec:**  
**(Where Available)**

**Full Rec:** Install an accessible route to where programs, services and activities are provided (see CBC 1114B.1.2 and ADAAG 4.3.2). The minimum width of the path of travel shall be 48 inches with a firm, stable and slip-resistant surface. No protruding objects are permitted on the accessible path of travel and slopes shall not exceed 5% in the direction of travel.

## Emergency Warning Systems

**Finding:** The facility shall have a fire and life safety emergency plan approved by the local building official that specifically addresses the evacuation of individuals with disabilities.



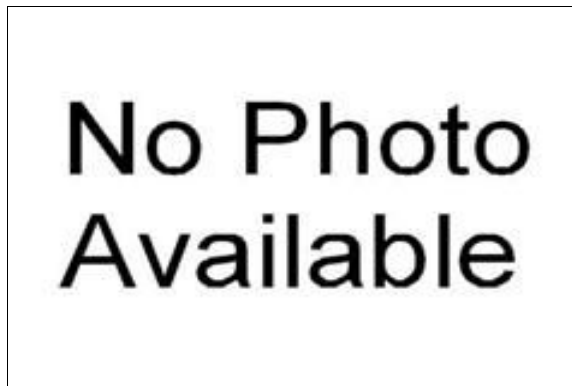
**Alternative \***  
**Rec:**  
**(Where Available)**

**Full Rec:** A fire and life safety emergency plan that specifically addresses the evacuation of individuals with disabilities must be approved by local building officials and the state fire official and comply with CFC Part 9 and CBC 1114B.2 for areas of rescue assistance.

Citations: CFC Part 9 & CBC 1114B.2	
Minimum Quantity	1
Maximum Quantity	1
<b>Minimum Estimated Cost:</b>	\$0.00
<b>Maximum Estimated Cost:</b>	\$0.00
Record Number::	93
Priority:	

## Babe Herman Little League Field Emergency Warning Systems

**Finding:** There are no visual warning devices in common areas of the facility.



**Alternative Rec:** Altering a facility's programs, or addressing higher priority barriers can reduce or eliminate the need for an area of rescue assistance, such as making certain that an individual with a disability participates in programs located near an already accessible exit. Otherwise creating an accessible exit can provide an acceptable alternative to providing an area of rescue assistance.

**Full Rec:** Install visual warning devices integrated with the facility's alarm system complying with CBC 1114B.2.5, ADAAG 4.1.3(14) and ADAAG 4.28 in all common areas such as hallways, general use rooms, and in accessible restrooms and other accessible rooms.

Citations: CBC 1114B.2.4; ADAAG 4.1.3(14); ADAAG 4.28

Minimum Quantity	1
Maximum Quantity	1
<b>Minimum Estimated Cost:</b>	\$0.00
<b>Maximum Estimated Cost:</b>	\$288.00
Record Number::	94
Priority:	