

A. PURPOSE

The intent of this standard plan is to provide public safety and protect the investment in existing residential buildings by ensuring that existing buildings are maintained in accordance with the minimum prescriptive standards which do not represent a reduction in the level of safety. The minimum standards are intended to improve the seismic performance of these existing buildings and prevent their collapse in an event of a major earthquake. This standard plan is intended to be used in conjunction with the provisions of Chapter 32 of the California Building Code.

B. SCOPE

These provisions apply to one, two and three story residential buildings with reinforced concrete frame and/or masonry walls. Buildings with reinforced concrete frame and/or masonry walls are not included in the scope of this standard plan. Buildings with reinforced concrete frame and/or masonry walls are not included in the scope of this standard plan. Buildings with reinforced concrete frame and/or masonry walls are not included in the scope of this standard plan.

C. GENERAL REQUIREMENTS

REPAIR REQUIREMENTS: All work shown on these plans requires a building permit.  
INSPECTION REQUIREMENTS: None  
CONSTRUCTION REQUIREMENTS: All existing foundations and placement of reinforcing steel and anchor bolts in formwork shall be inspected and approved by the building official prior to placement of concrete. All existing foundations and placement of reinforcing steel and anchor bolts in formwork shall be inspected and approved by the building official prior to placement of concrete.

D. DEFINITIONS

ANCHOR BOLT: A threaded rod, bar or pipe used to connect a concrete wall to a foundation or to another concrete wall. The anchor bolt shall be installed in accordance with the provisions of this standard plan. The anchor bolt shall be installed in accordance with the provisions of this standard plan. The anchor bolt shall be installed in accordance with the provisions of this standard plan.

E. MATERIALS

ANCHOR BOLT: A threaded rod, bar or pipe used to connect a concrete wall to a foundation or to another concrete wall. The anchor bolt shall be installed in accordance with the provisions of this standard plan. The anchor bolt shall be installed in accordance with the provisions of this standard plan. The anchor bolt shall be installed in accordance with the provisions of this standard plan.

F. CONSTRUCTION

ANCHOR BOLT: A threaded rod, bar or pipe used to connect a concrete wall to a foundation or to another concrete wall. The anchor bolt shall be installed in accordance with the provisions of this standard plan. The anchor bolt shall be installed in accordance with the provisions of this standard plan. The anchor bolt shall be installed in accordance with the provisions of this standard plan.

G. ANCHOR BOLT INSTALLATION

1. GENERAL REQUIREMENTS: All concrete and steel shall be installed in accordance with the provisions of this standard plan. The anchor bolt shall be installed in accordance with the provisions of this standard plan. The anchor bolt shall be installed in accordance with the provisions of this standard plan.

H. ANCHOR BOLT INSTALLATION

1. GENERAL REQUIREMENTS: All concrete and steel shall be installed in accordance with the provisions of this standard plan. The anchor bolt shall be installed in accordance with the provisions of this standard plan. The anchor bolt shall be installed in accordance with the provisions of this standard plan.

I. ANCHOR BOLT INSTALLATION

1. GENERAL REQUIREMENTS: All concrete and steel shall be installed in accordance with the provisions of this standard plan. The anchor bolt shall be installed in accordance with the provisions of this standard plan. The anchor bolt shall be installed in accordance with the provisions of this standard plan.

J. ANCHOR BOLT INSTALLATION

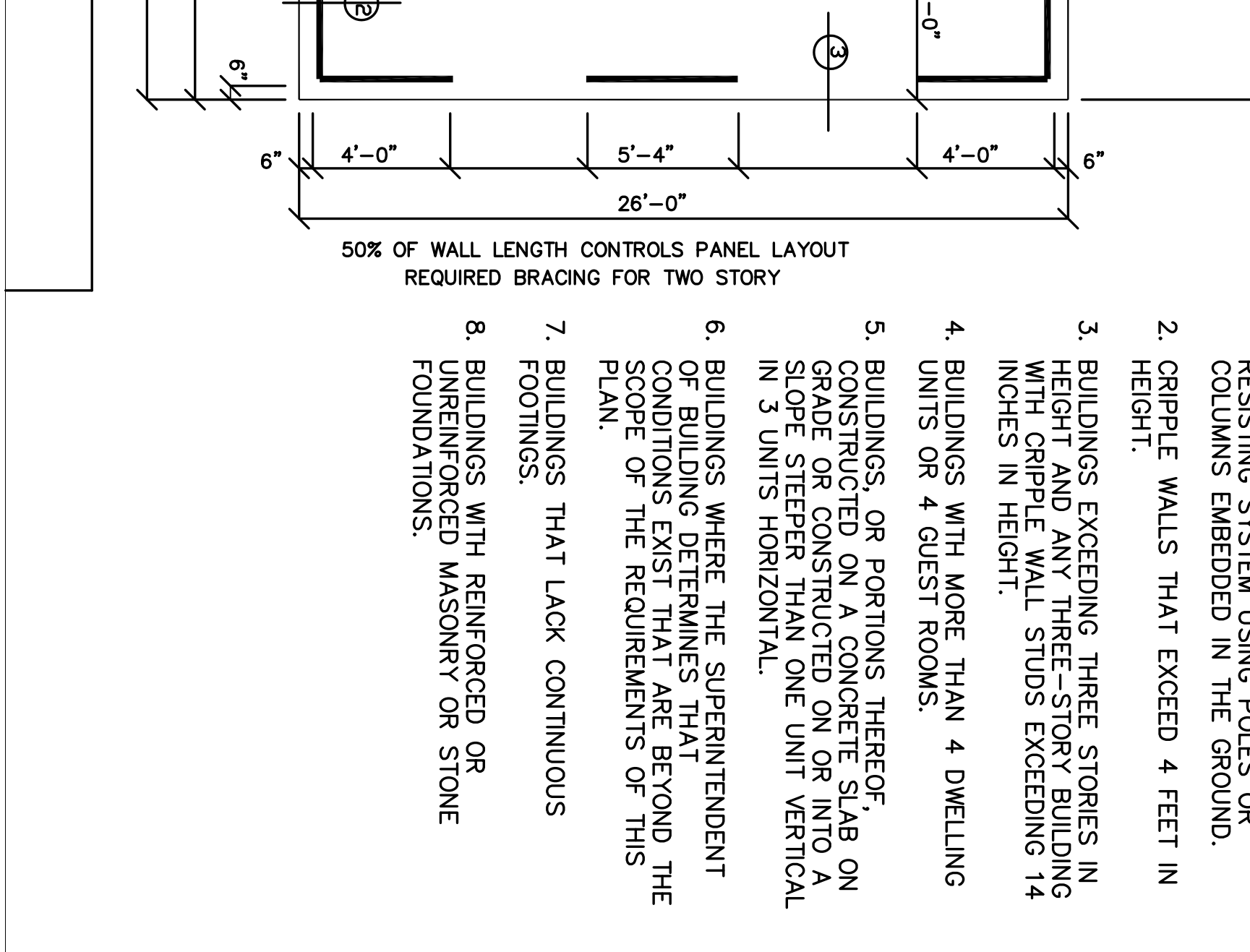
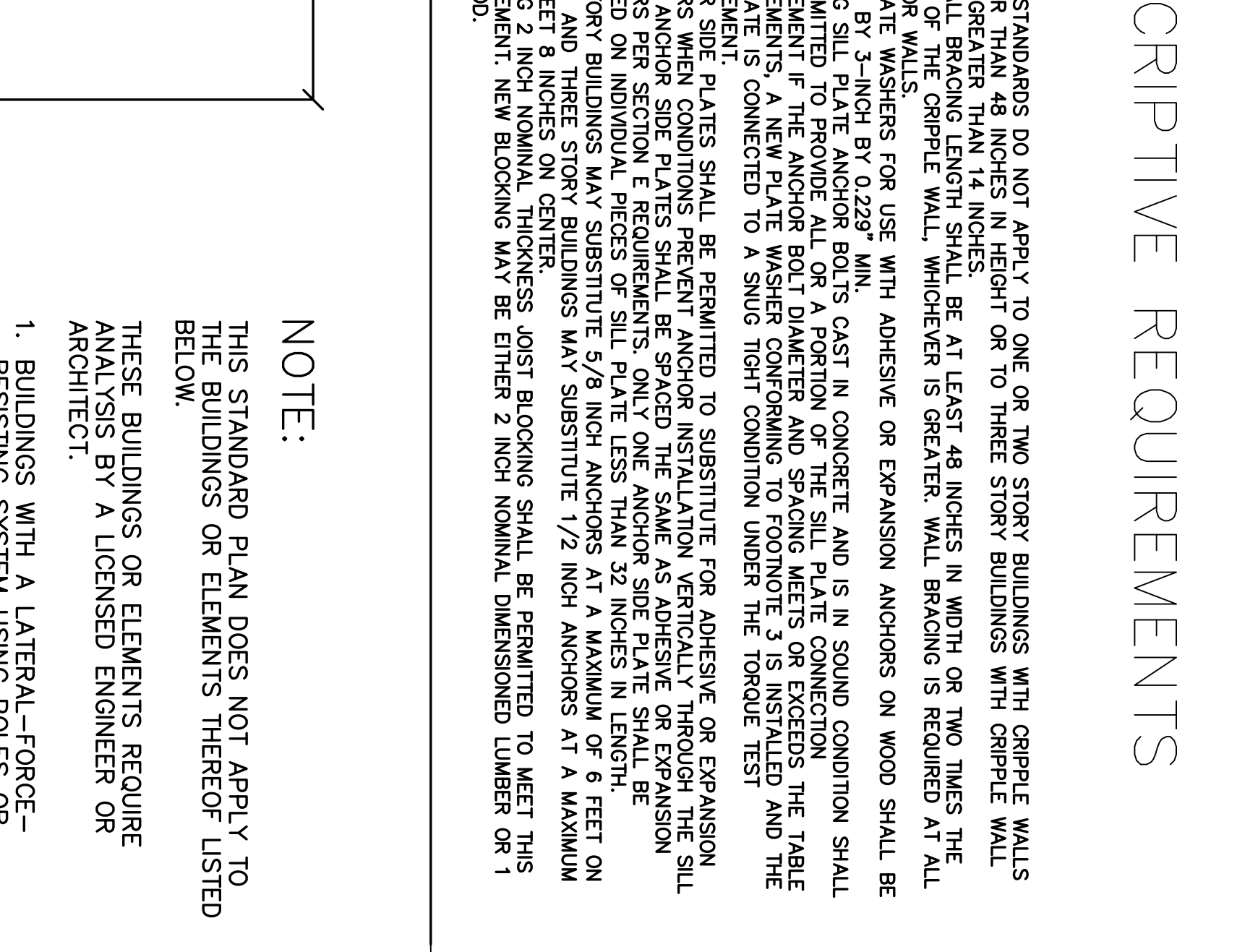
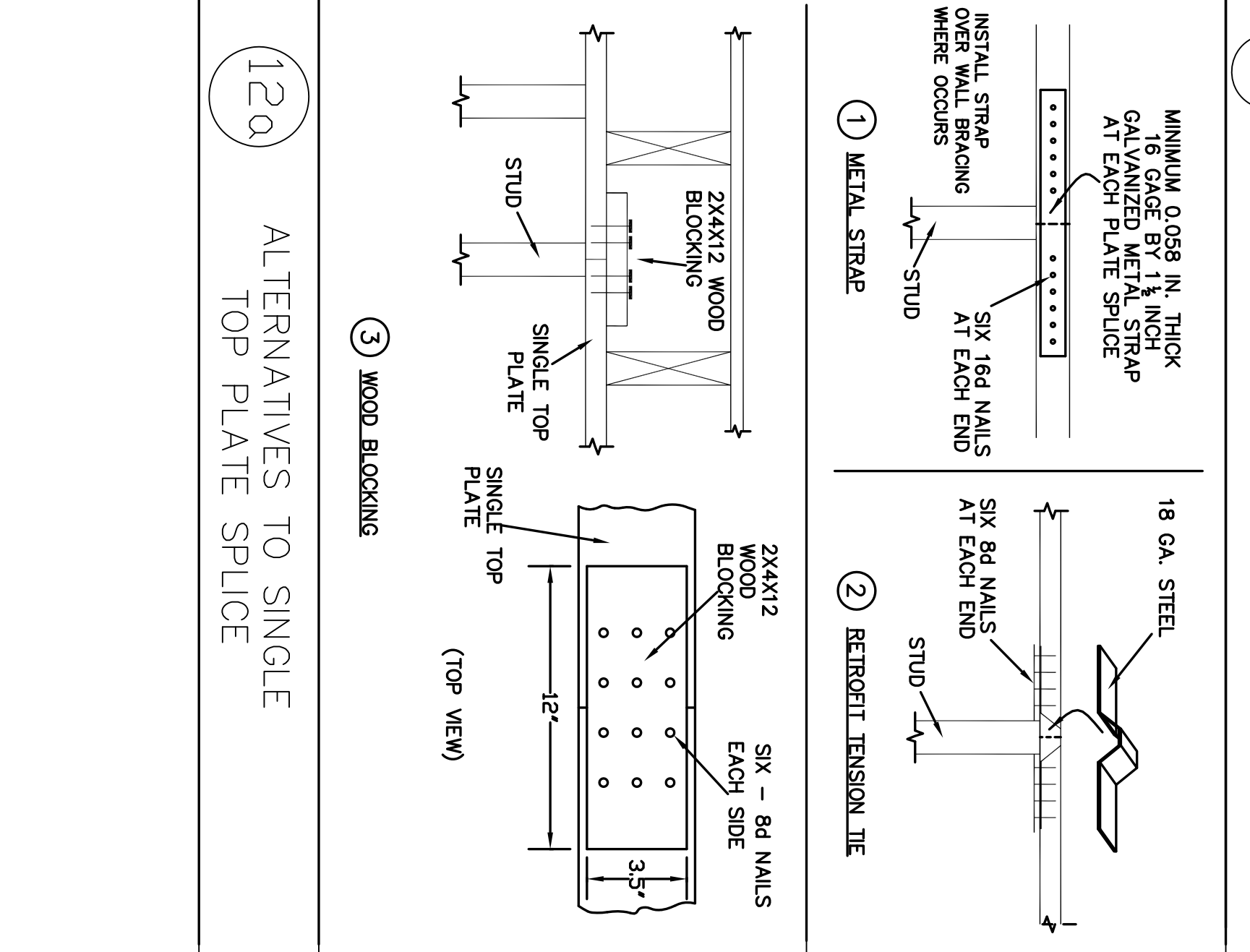
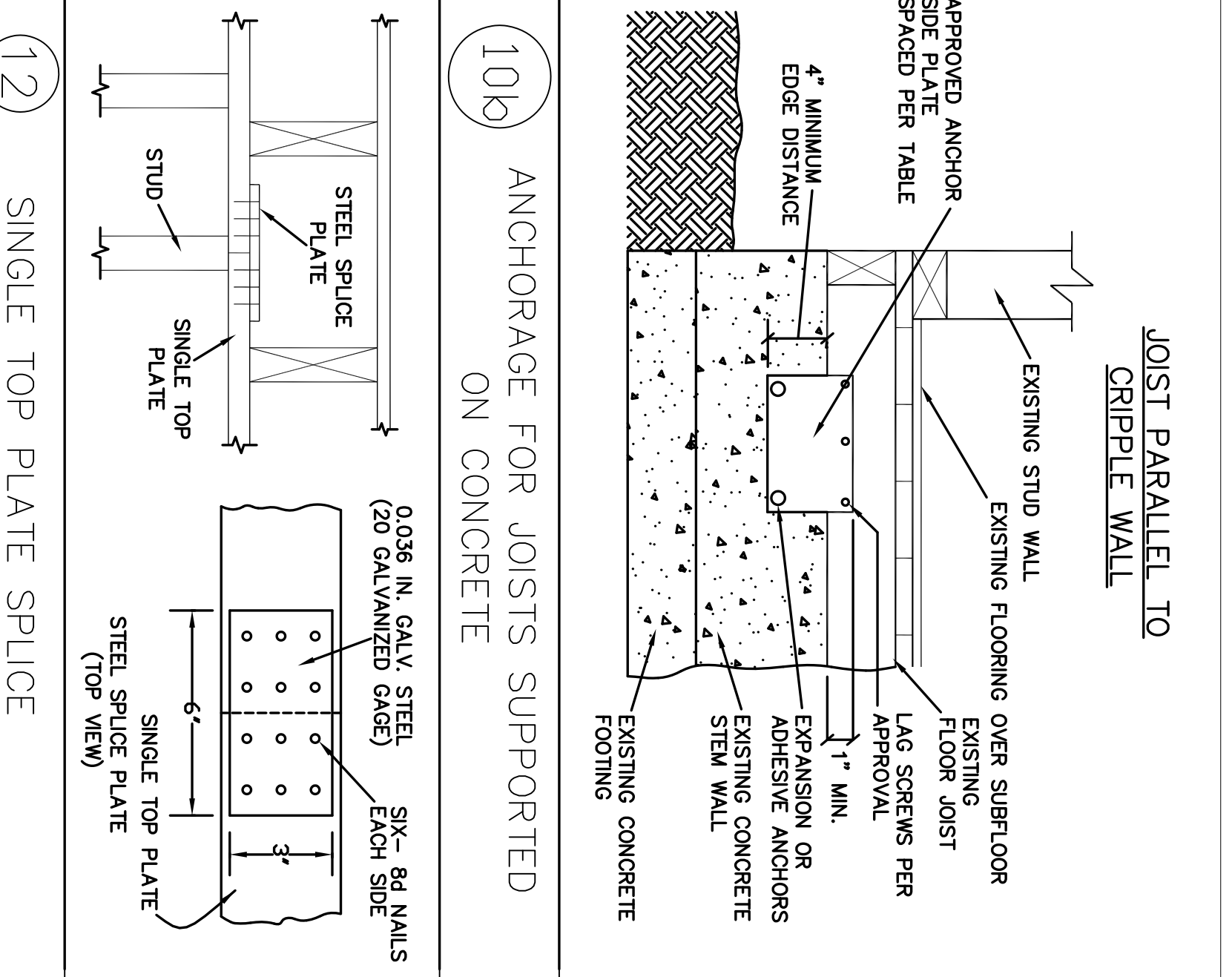
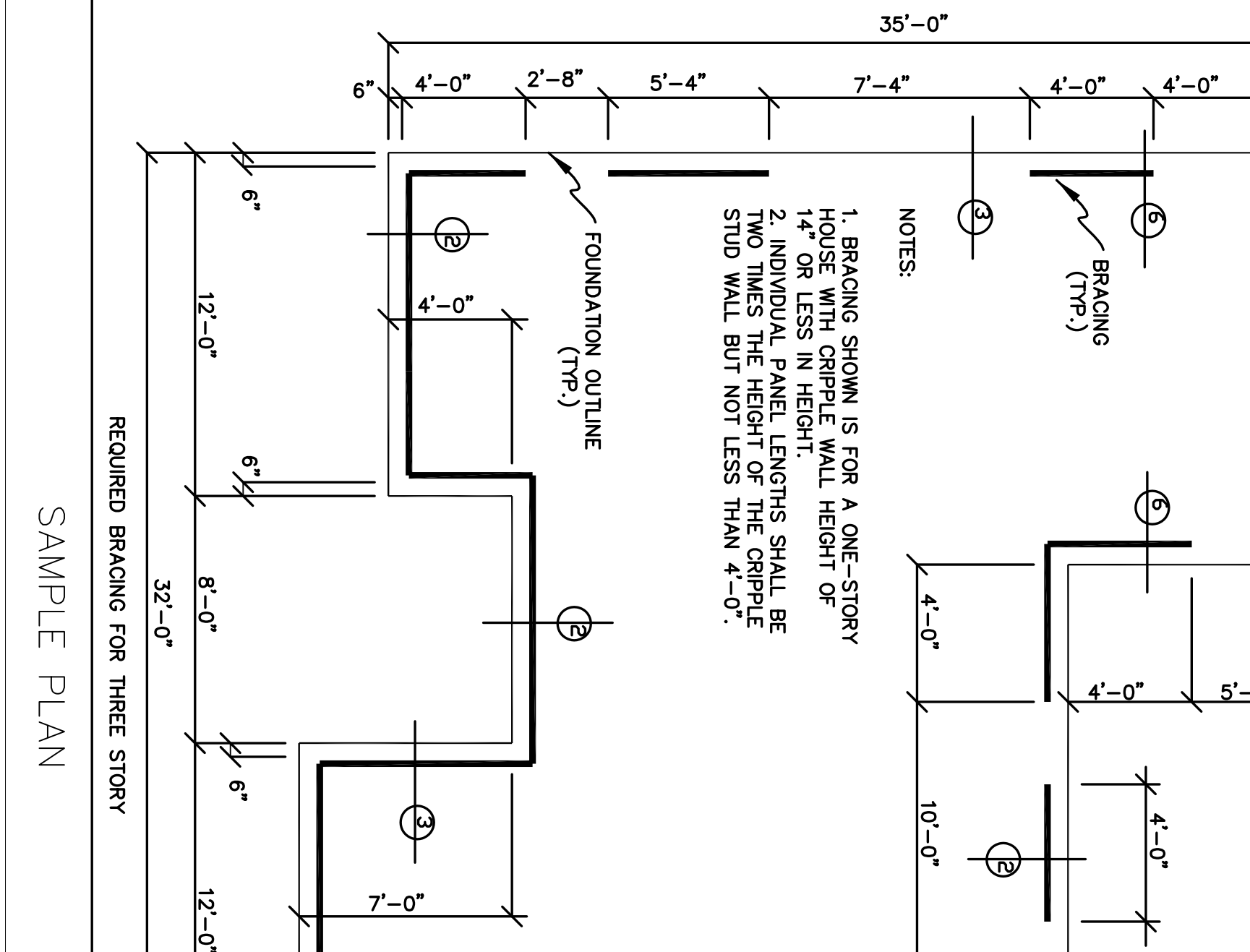
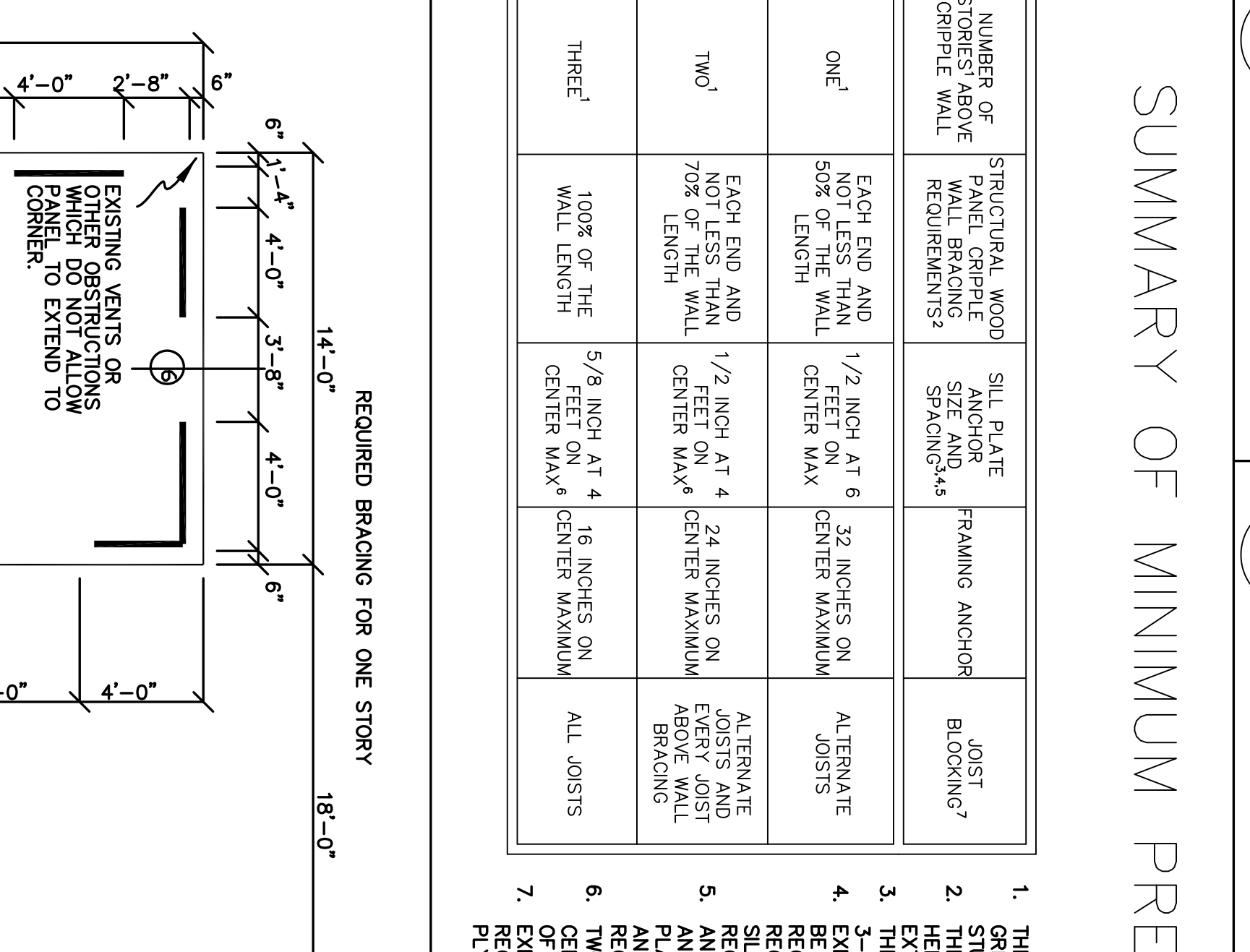
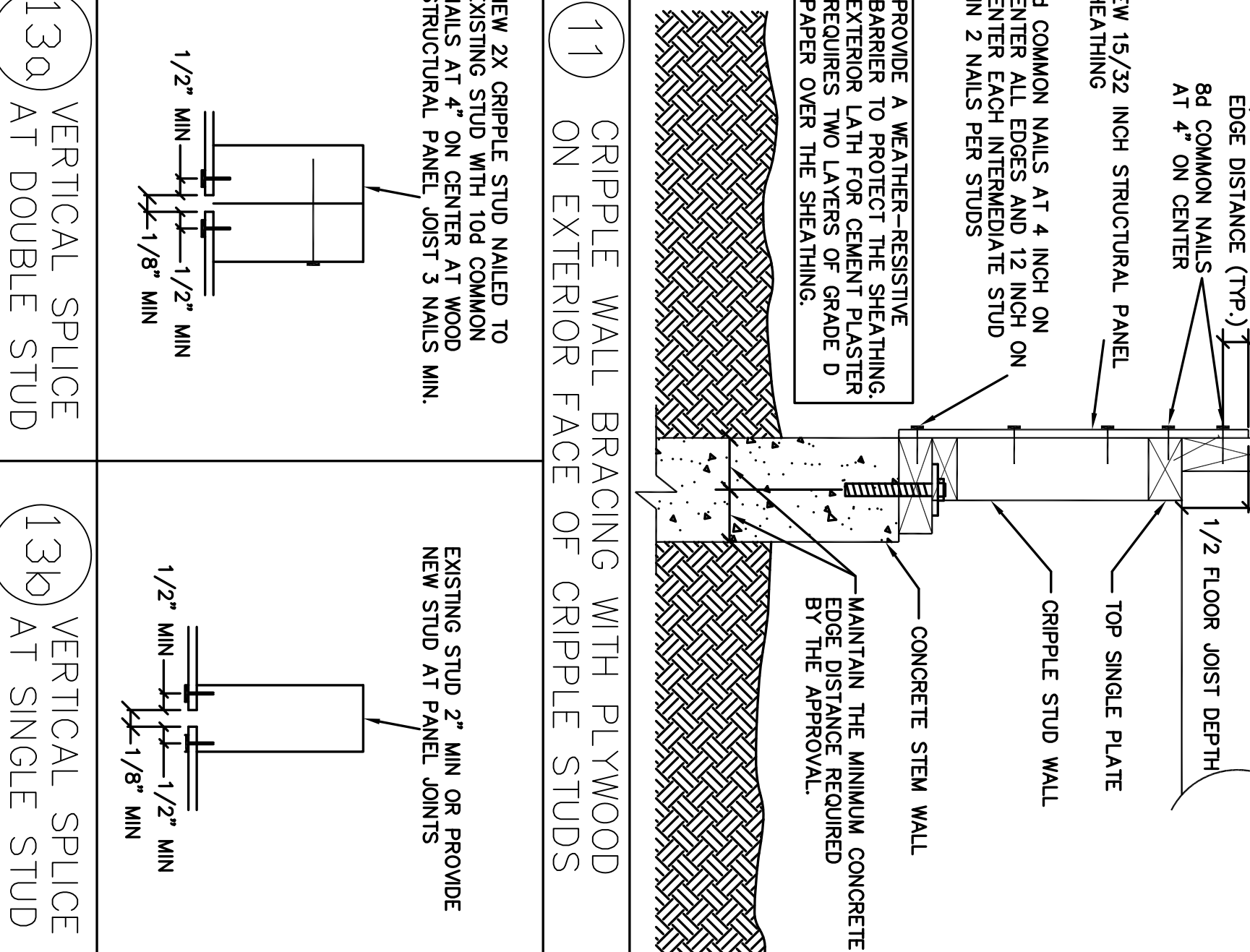
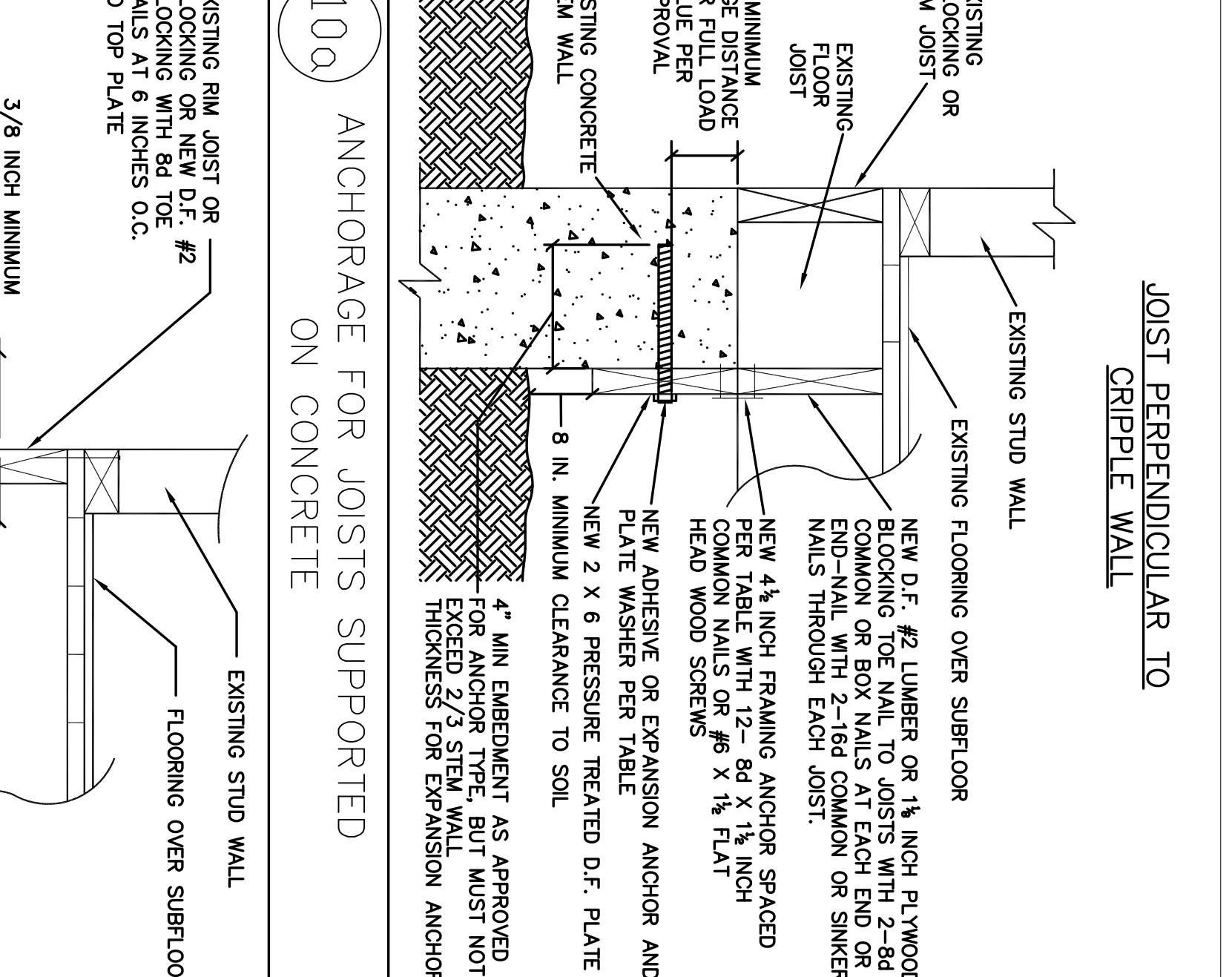
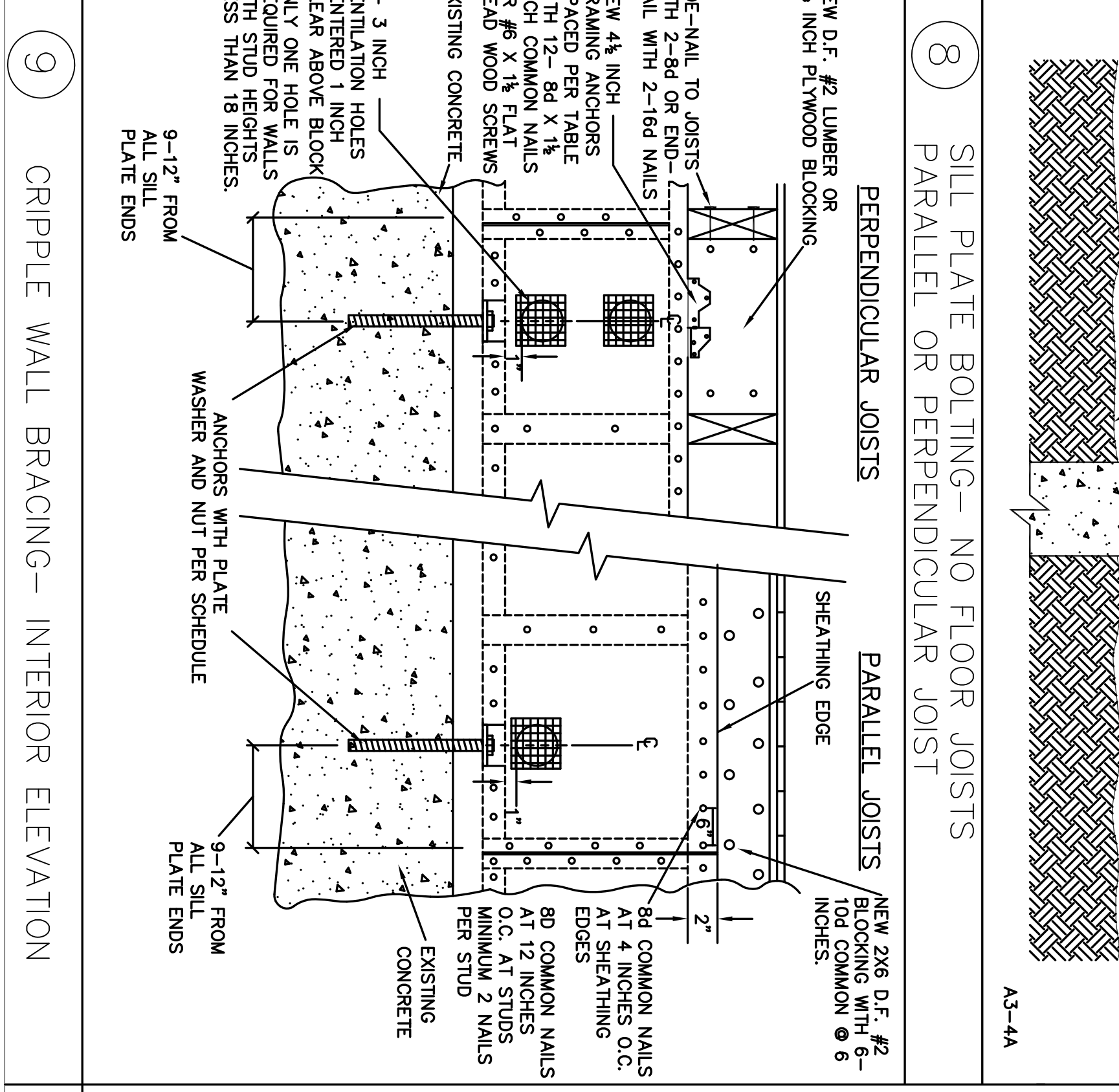
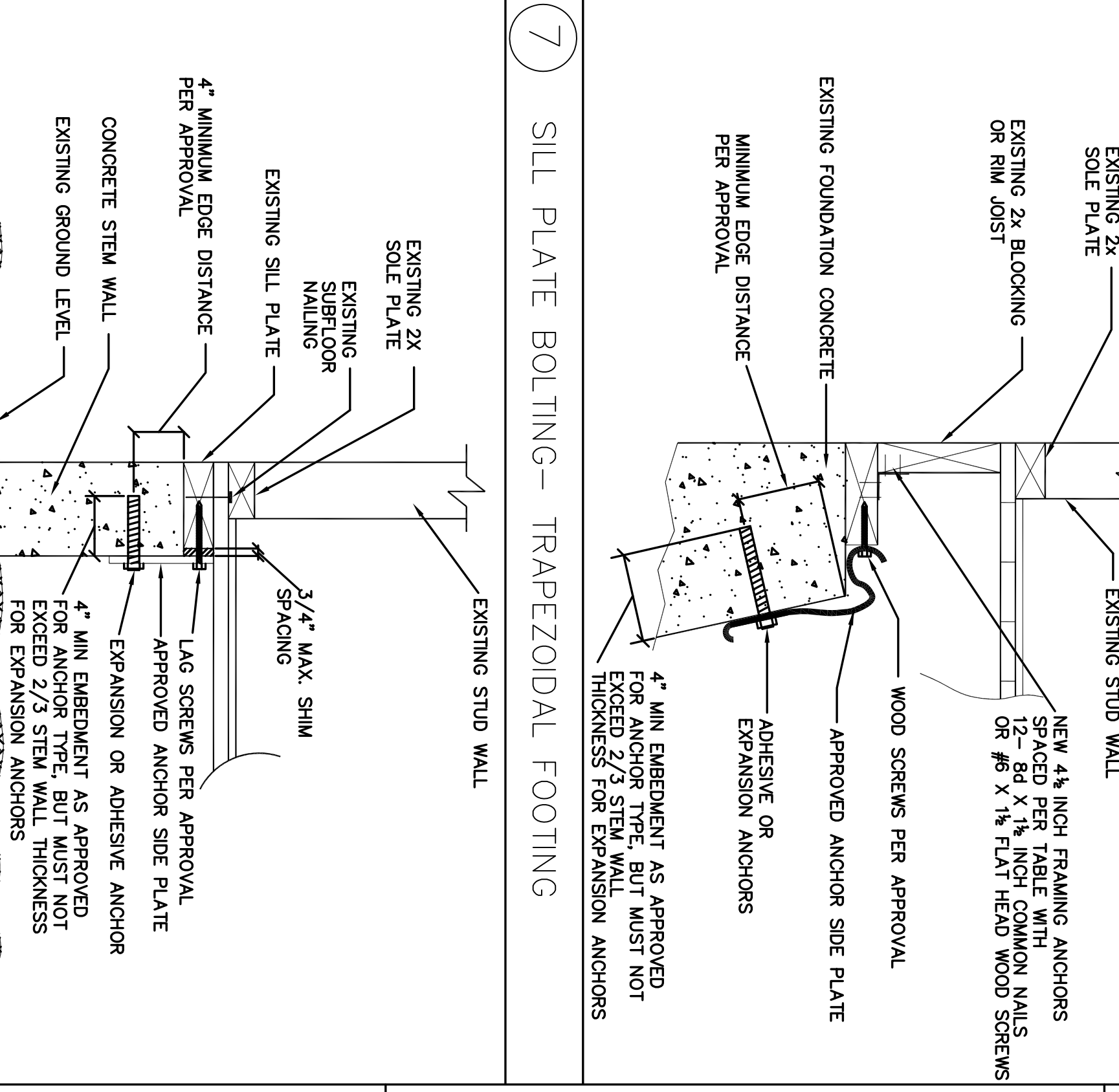
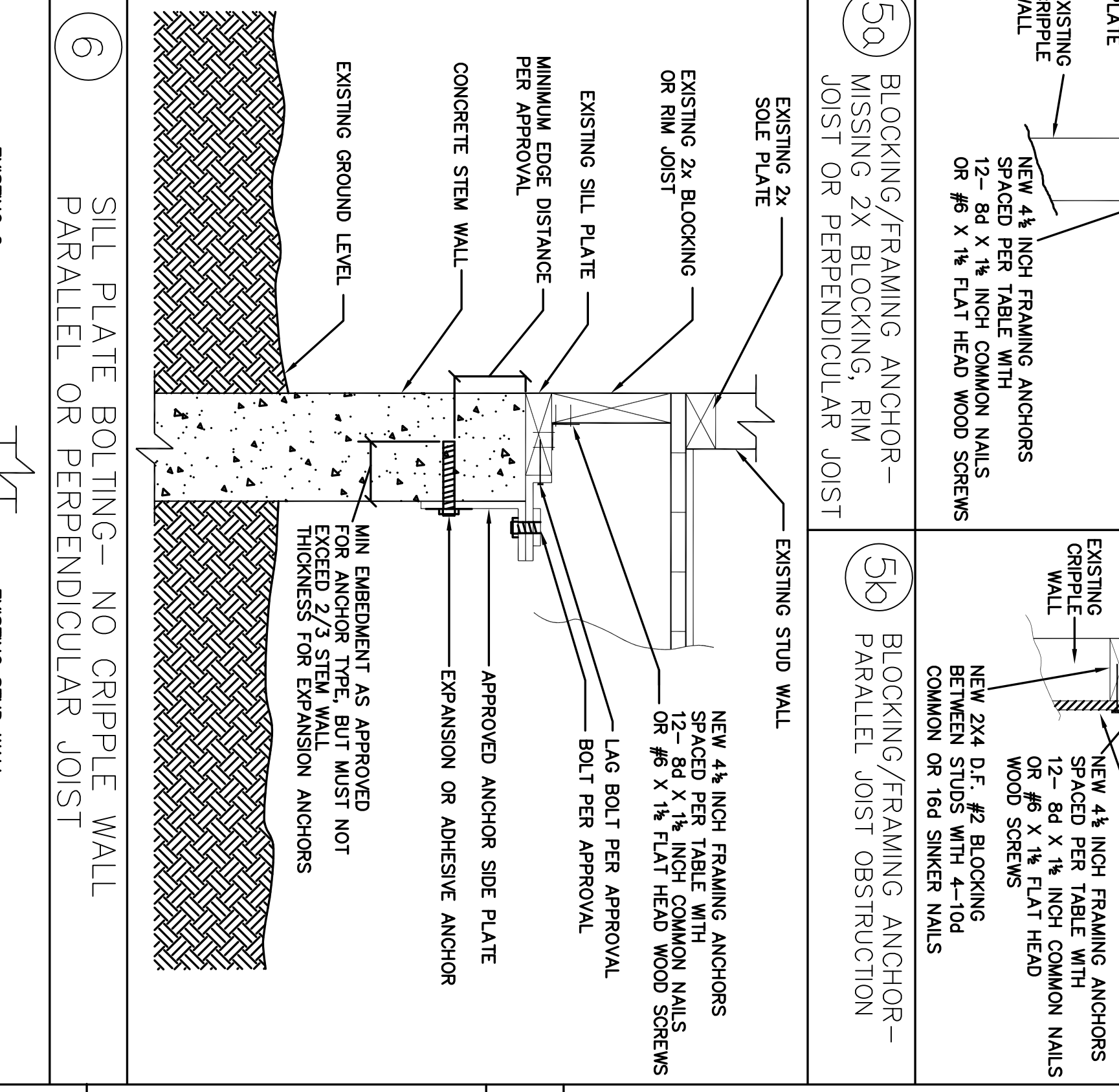
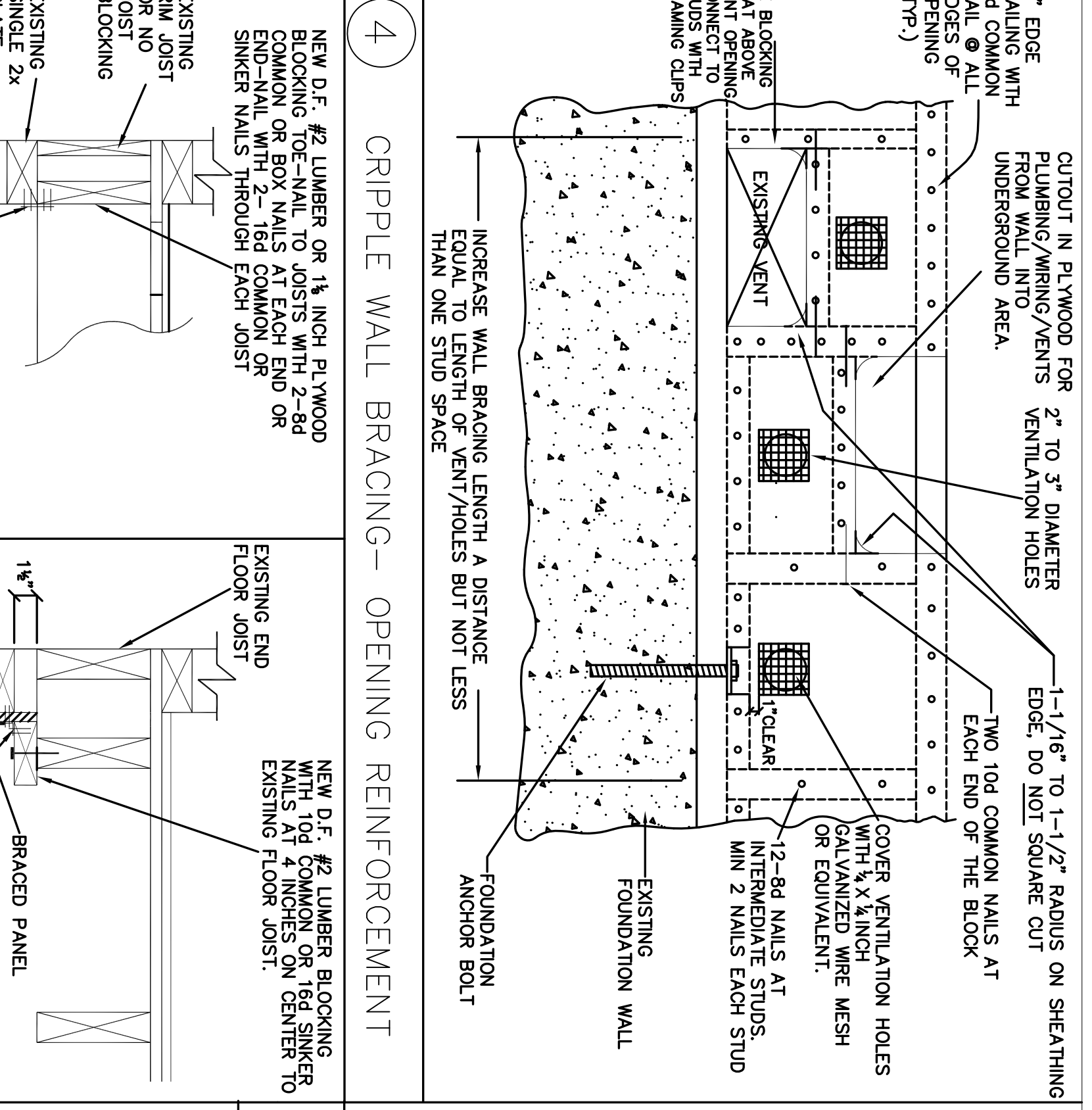
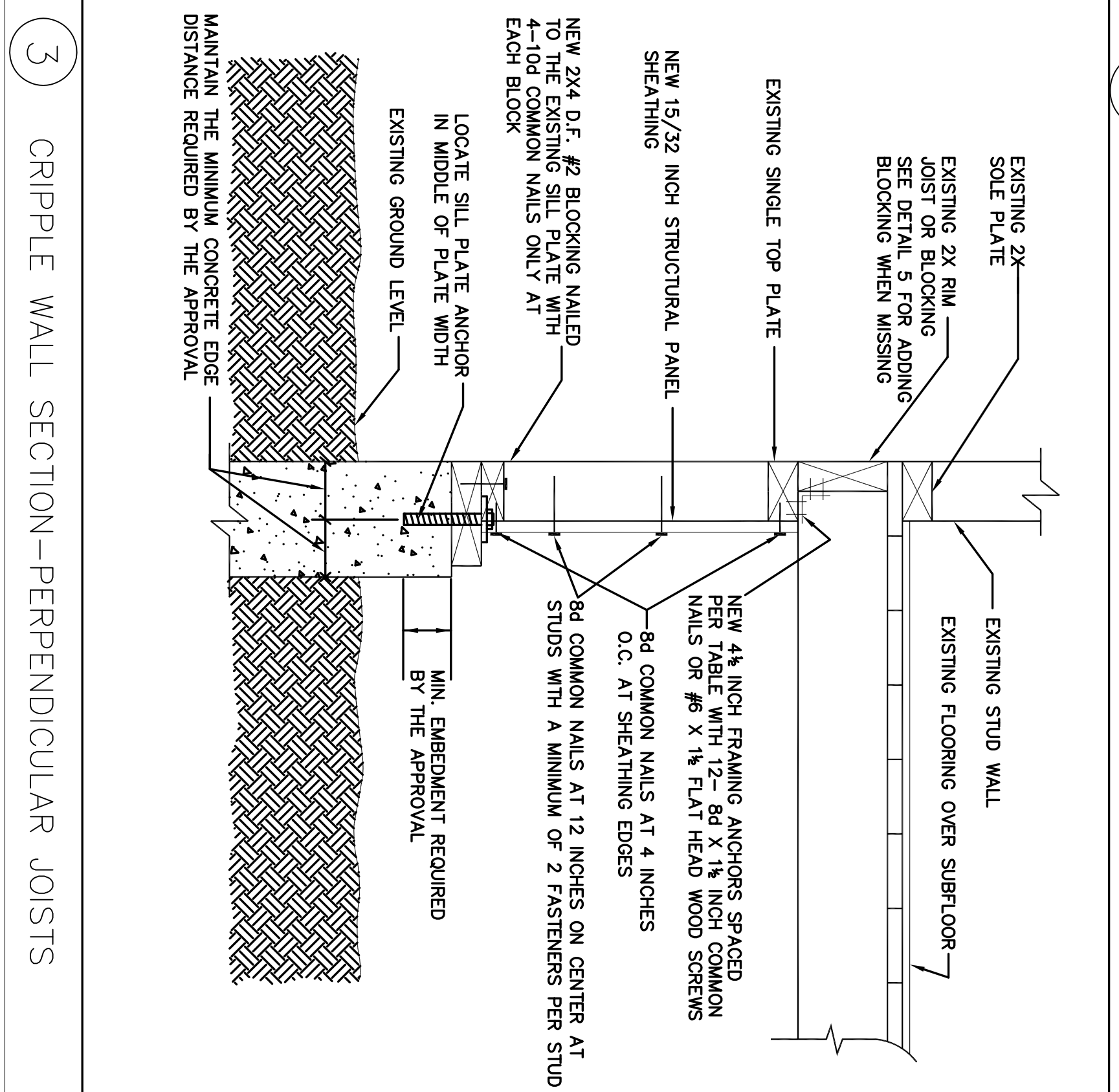
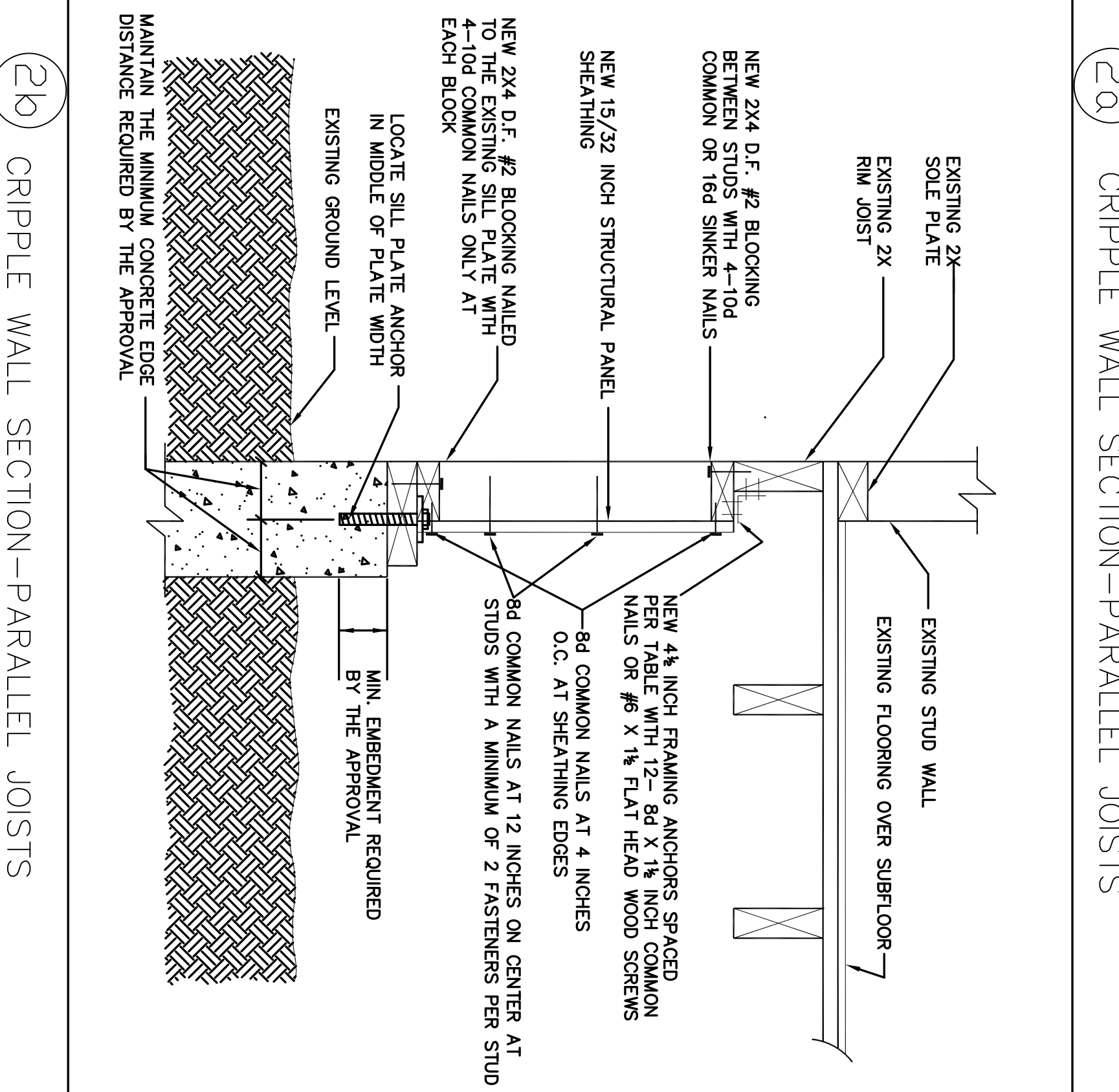
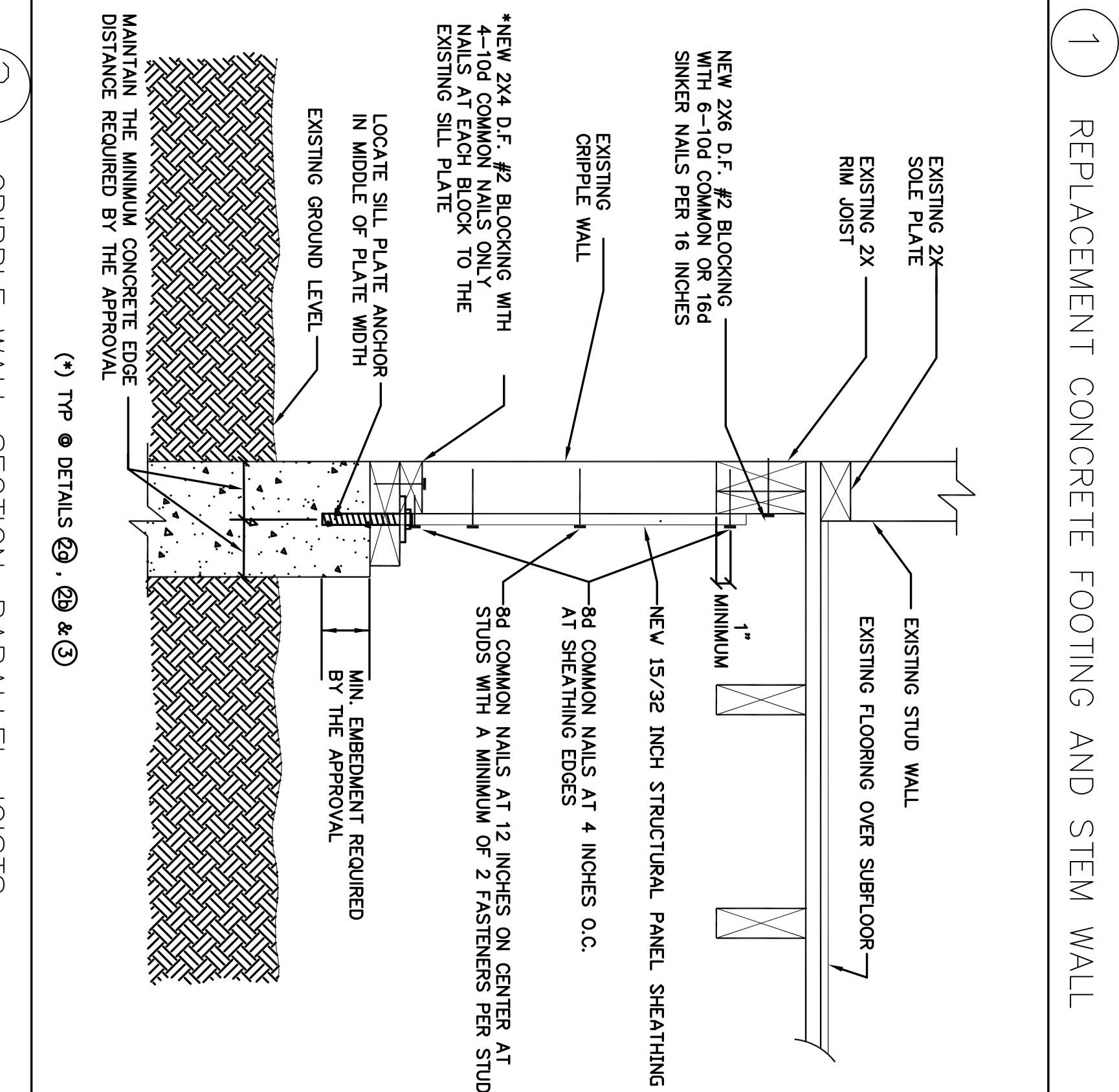
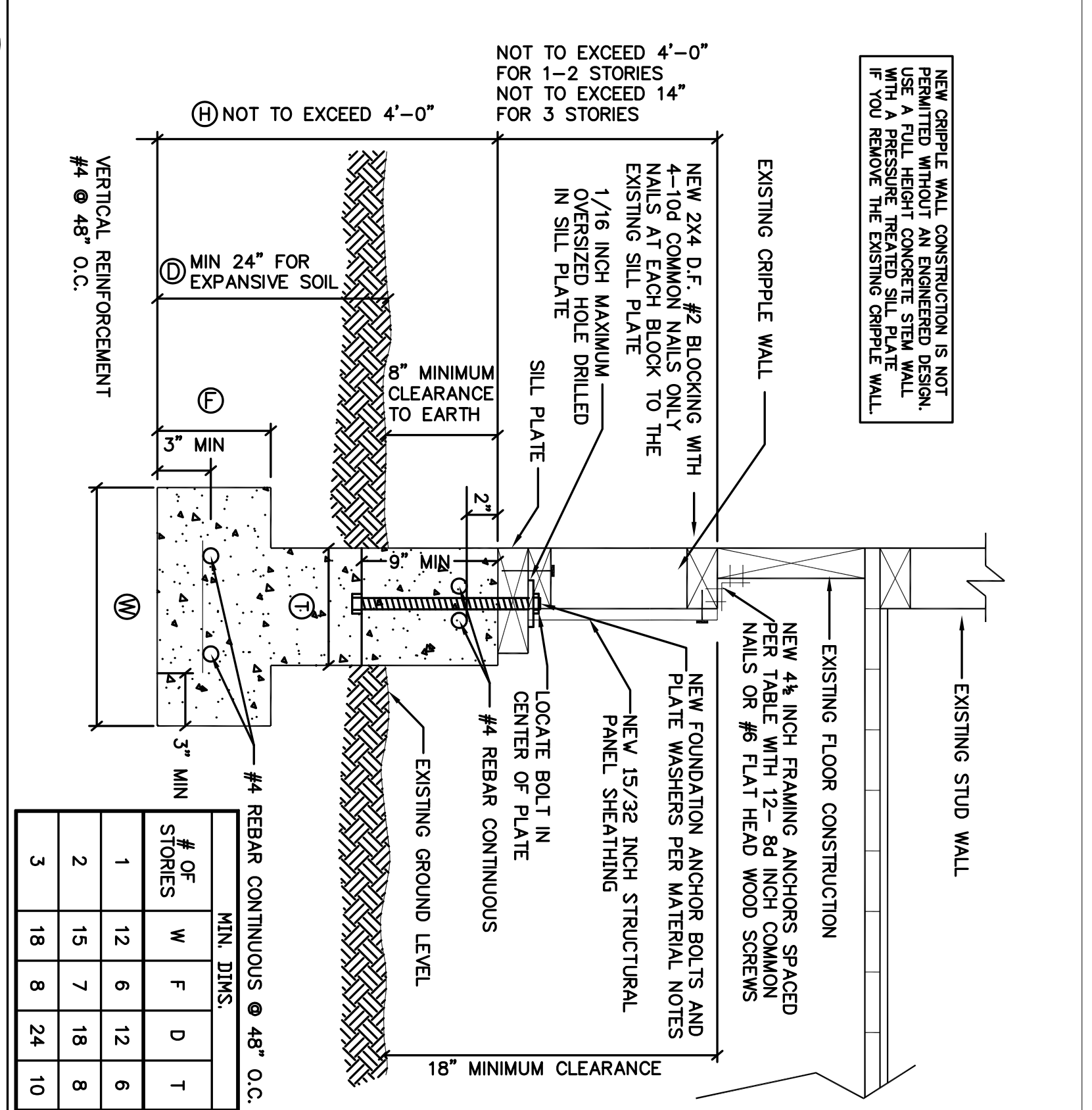
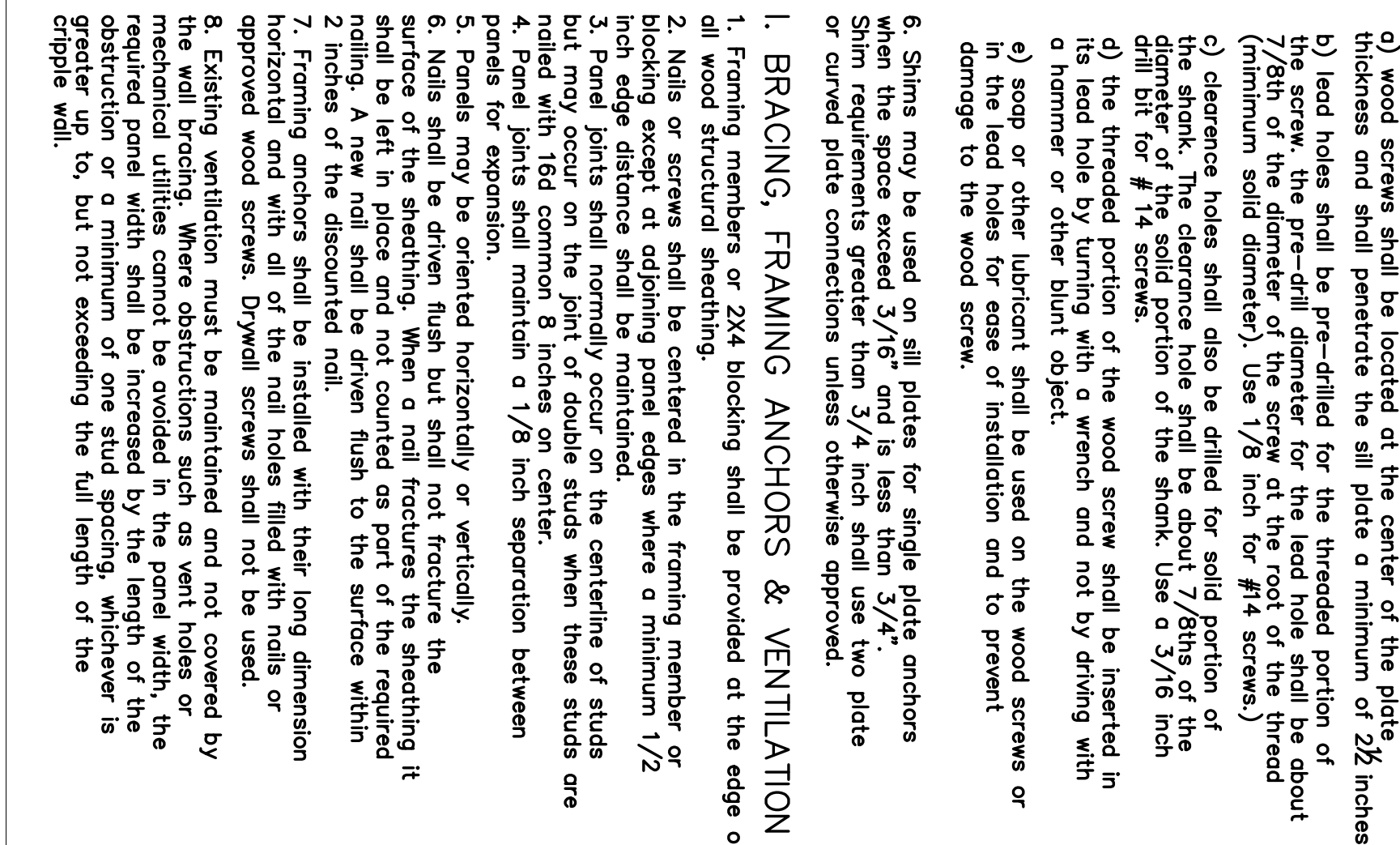
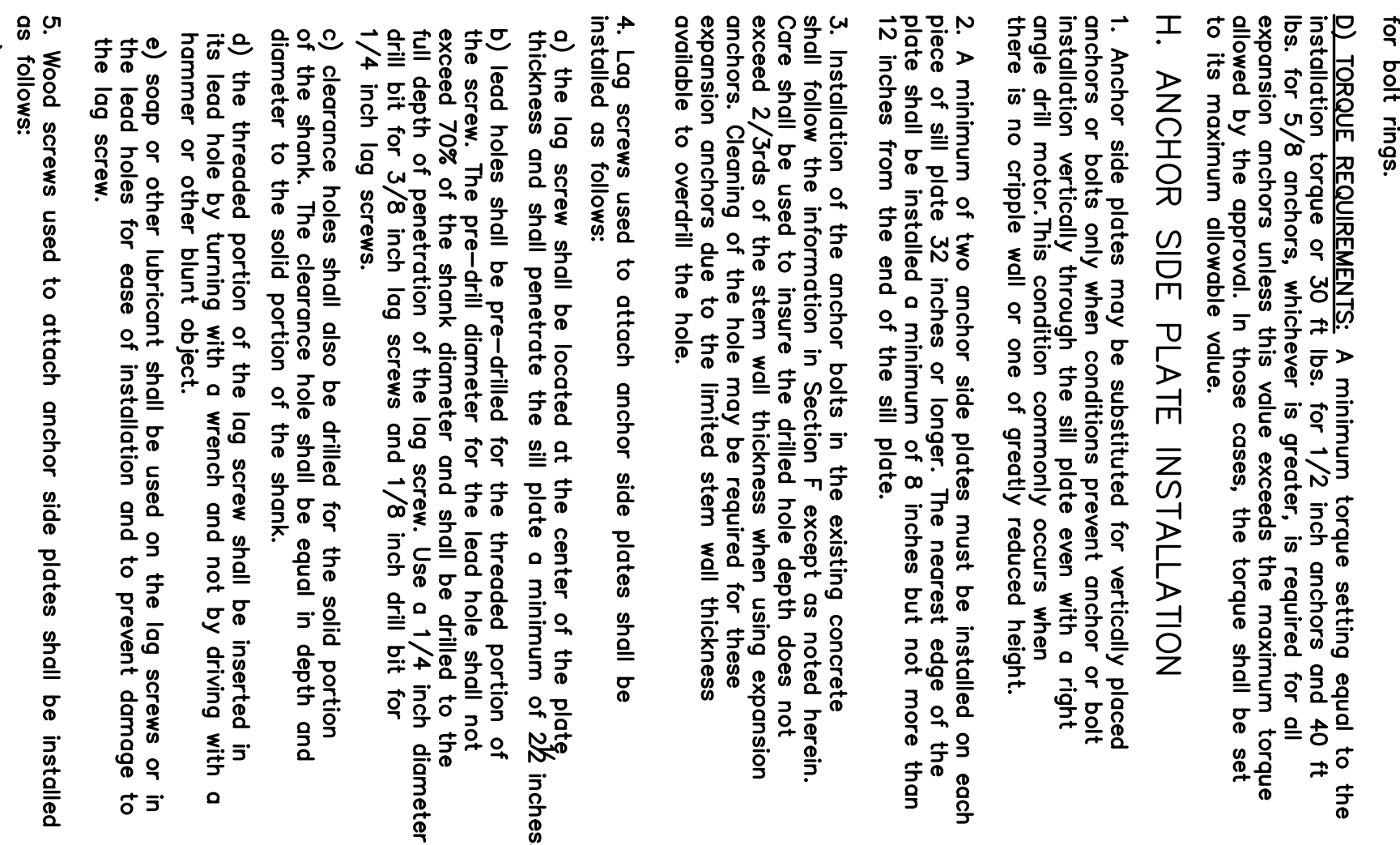
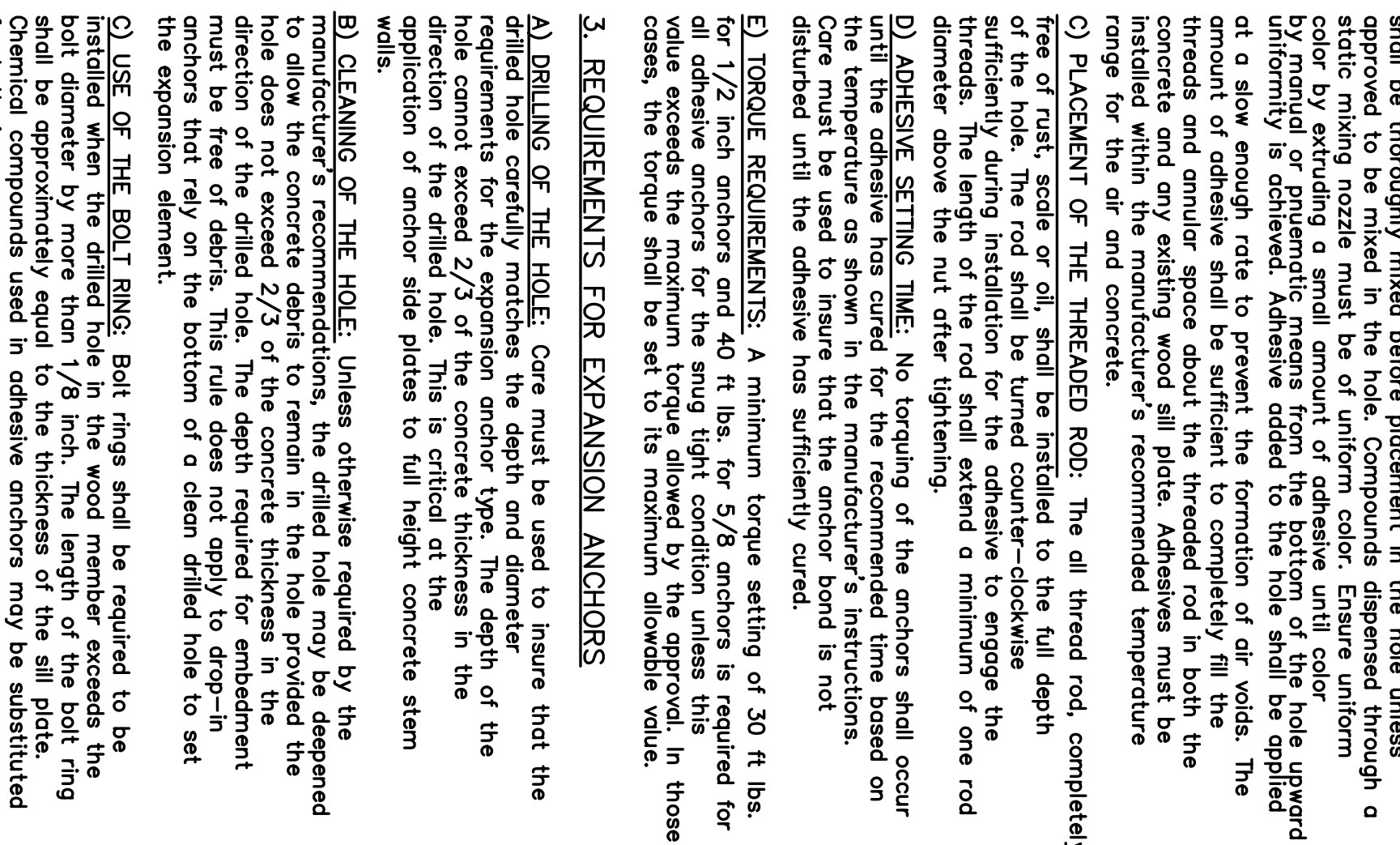
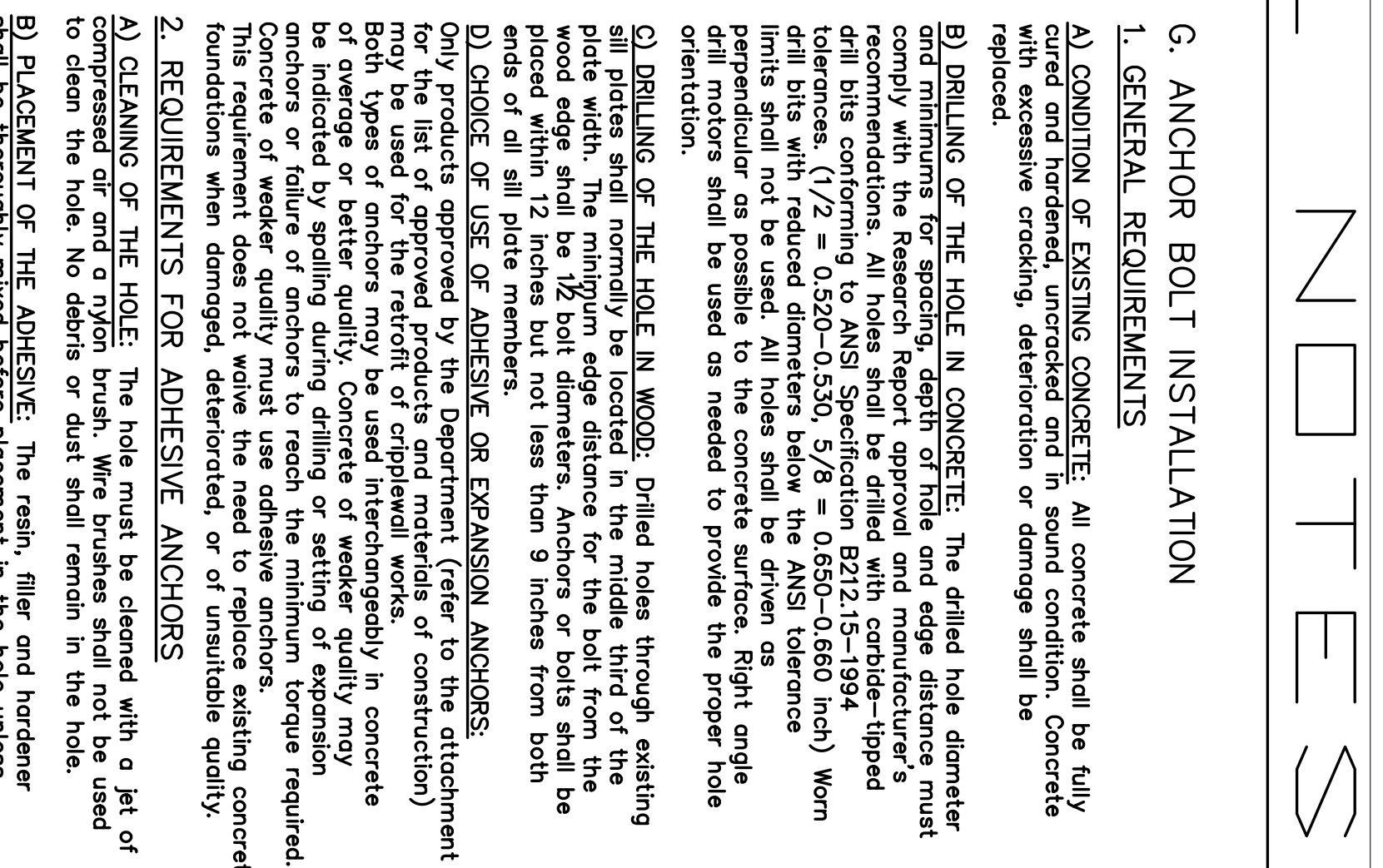
1. GENERAL REQUIREMENTS: All concrete and steel shall be installed in accordance with the provisions of this standard plan. The anchor bolt shall be installed in accordance with the provisions of this standard plan. The anchor bolt shall be installed in accordance with the provisions of this standard plan.

K. ANCHOR BOLT INSTALLATION

1. GENERAL REQUIREMENTS: All concrete and steel shall be installed in accordance with the provisions of this standard plan. The anchor bolt shall be installed in accordance with the provisions of this standard plan. The anchor bolt shall be installed in accordance with the provisions of this standard plan.

L. ANCHOR BOLT INSTALLATION

1. GENERAL REQUIREMENTS: All concrete and steel shall be installed in accordance with the provisions of this standard plan. The anchor bolt shall be installed in accordance with the provisions of this standard plan. The anchor bolt shall be installed in accordance with the provisions of this standard plan.



REVISIONS:  
05/03/2016

EARTHQUAKE HAZARD REDUCTION IN EXISTING WOOD FRAME RESIDENTIAL BUILDINGS WITH WEAK CRIPPLE WALLS AND UNBOLTED SILL PLATES

APPROVED BY:  
IFA KASHEFI, CHIEF OF THE ENGINEERING BUREAU  
KEN GILL, ASSISTANT CHIEF OF THE ENGINEERING BUREAU