

1904 1906 1920s 1930s 1946 1970s 1980s 1987 1989 1994 2001 2023

Tracks are laid through a strip of land owned by Leslie C. Brand, connecting Los Angeles to Glendale.

The City of Glendale is incorporated.

Land developer F.P. Newport purchases the remaining parcel of the Rancho owned by the Verdugo family and builds the homes in the surrounding area, preserving the Adobe due to its historical significance.

Brand Blvd. grows into a vital commercial and entertainment street.

Dr. Ernest Bashor purchases Catalina Verdugo Adobe from F.P. Newport to use as a summer retreat for his family. He names the property "El Roble de La Paz" or "Oak of Peace."

A surge of development and building takes place. The Glendale Galleria is built.

The 134 Freeway is constructed across the center of Glendale, creating the "Golden Triangle," echoing the geographic triangle of the Rancho San Rafael.

The Oak of Peace dies of root rot, with remnants visible at its original site.

The Bashor family sells the Adobe to the City of Glendale after 43 years of family ownership.

The Adobe becomes the City of Glendale Community Services & Parks Ranger Office.

The Days of Verdugo Heritage Association revitalizes the interior of the Adobe.

Don Jose Verdugo Chapter, Daughters of the American Revolution partners with the City of Glendale to plant a new oak to replace the original Oak of Peace.



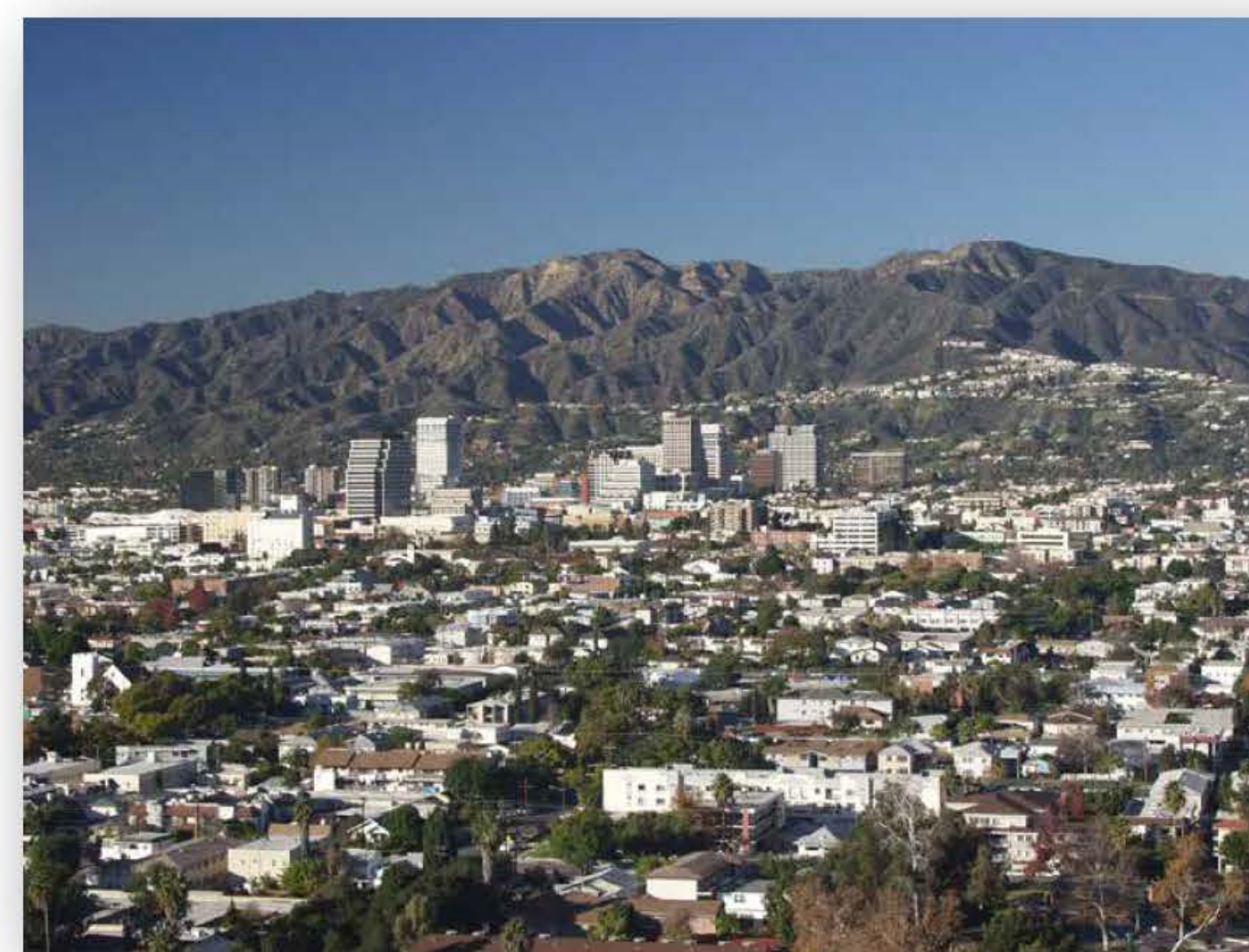
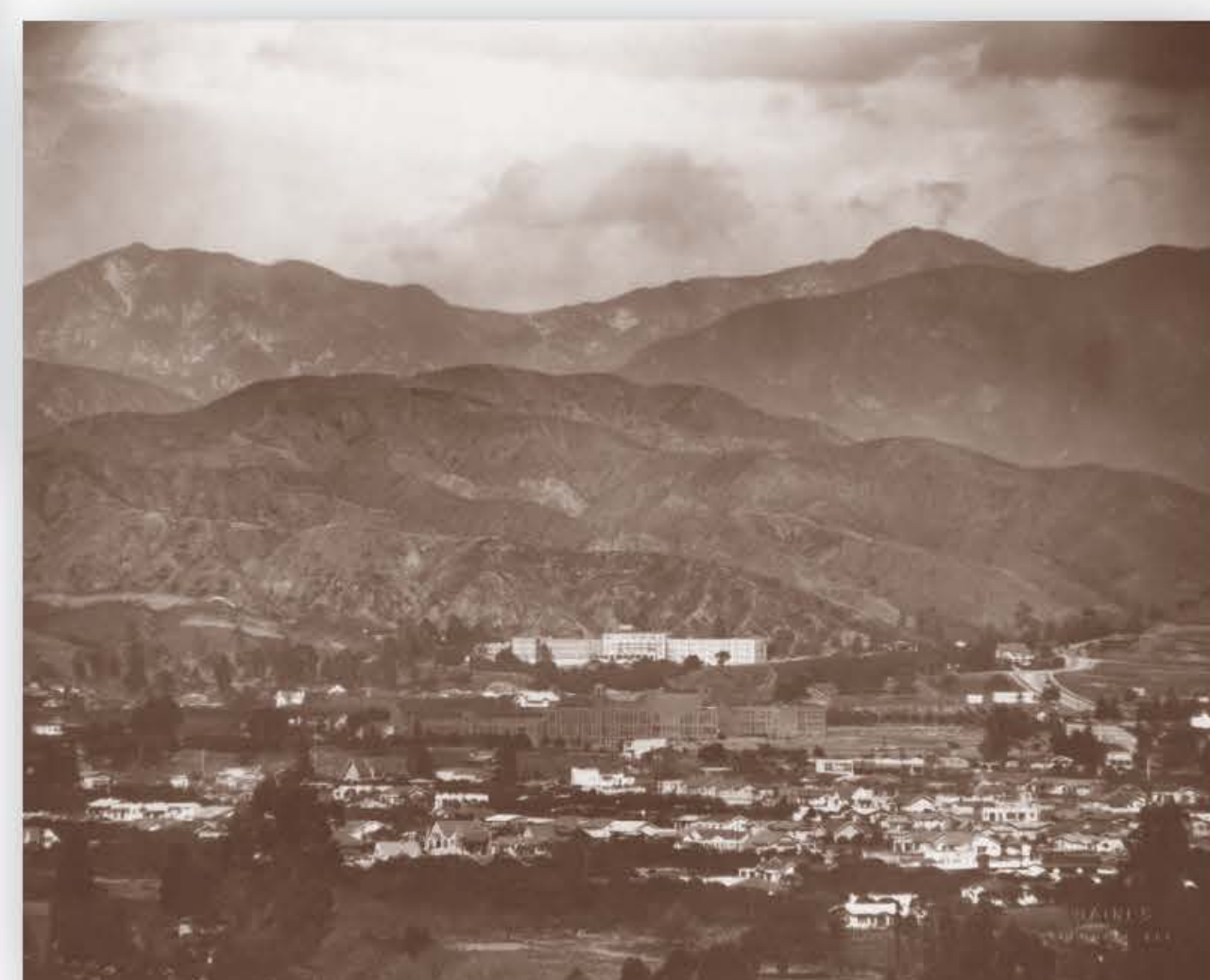
Above and to the right: Historic photos of the City of Glendale



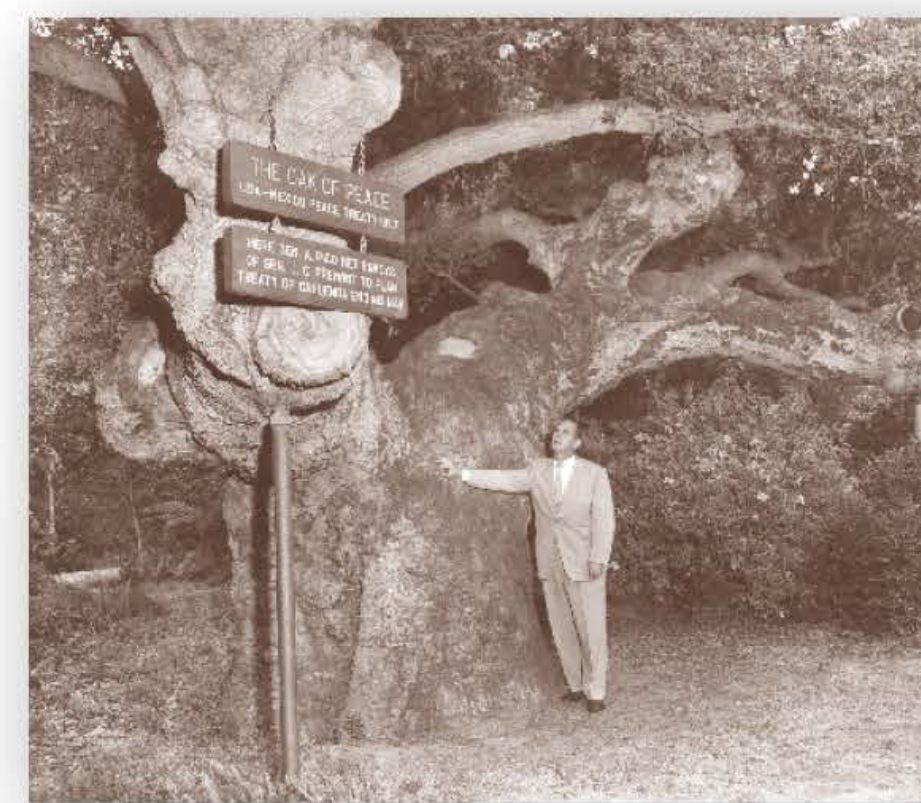
Brand Boulevard



134 Freeway



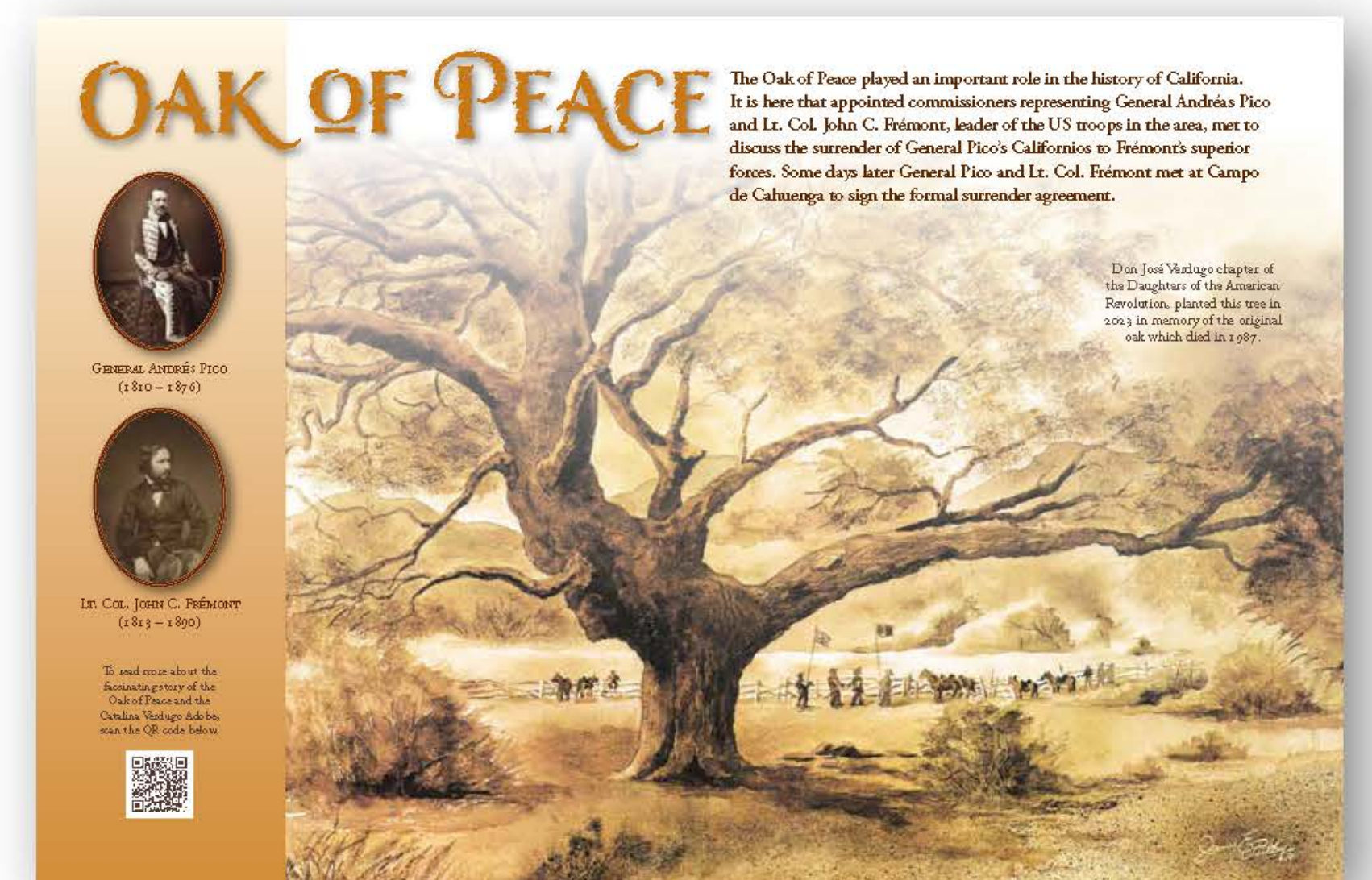
City of Glendale today



Original Oak of Peace



Catalina Verdugo Adobe today



Signage for the newly planted Oak of Peace