

SUSTAINABLE SEASONS

IN THIS EDITION:

- **Clothing Swap and Repair Cafe**
- **Climate Action and Adaptation Plan**
- **Bicycle Transportation Plan**
- **Plastic Reduction Regulation**
- **City Events**



Clothing Swap

Retextile: Clothing Swaps

Say hello to Clothing Swaps - the sustainable and stylish solution to textile waste. A meeting where people get together to swap clothing! It's simple, you bring the clothes you're ready to part with, and in return, you score some stylish new additions to your wardrobe. It's like a fashion exchange party, and the best part? Your once-loved clothes get a second chance to shine, even if you've moved on from them. These events rescue perfectly wearable pieces and give them a second life instead of a gloomy fate in the landfill.

Fighting Textile Waste

The process of making new clothes consumes vital resources, like water, and introduces harmful chemicals into the environment. In the United States alone, an estimated 11.3 million tons of textile waste, equivalent to 85% of all textiles, find their way into landfills annually. Choosing clothing swaps over traditional shopping is a proactive step in extending the lifespan of clothing items and reducing textile waste.





This sustainable practice not only reduces the burden on our planet but also has a significant impact on our personal carbon, water, and waste footprints. Extending the useful life of your clothing by just nine months can result in a remarkable 20% reduction in these environmental impacts. In essence, clothing swaps offer a responsible and eco-friendly way to declutter your wardrobe, acquire new outfits, and contribute to a healthier planet.

Last August, the Office of Sustainability in collaboration with Glendale Library Arts and Culture held a clothing swap at the Central Library. 71 people participated in the swap, and over 290 lbs of clothing were diverted from landfills. Before the event was over, we were asked when the next one would be held, which is why we are immensely happy to announce that our next swap will be held on December 2nd at Library Connections located in Adams Hill from 10:00AM-12:00PM. We hope to see you there! You can also volunteer for the event [here](#).





Repair Cafe


**Torn jeans? Broken lamps?
Cracked screens?
Don't throw them away. Fix it!**

This is where Repair Cafes come in. Repair Cafés are all about dusting off those fixable treasures instead of tossing them aside. It's like a mini-revolution against our throwaway culture! Community members volunteer their skills and roll up their sleeves, armed with tools, know-how, and ready to mend everything from wonky zippers to wobbly chairs. It's a fun, laid-back atmosphere where you can sip coffee, share stories, and maybe even learn a trick or two.

This repair revolution has taken a huge leap in California. In October 2023, the Right to Repair Act, fondly known as SB 244, was signed into law. Coming into effect on July 1, 2024, this game-changing law ensures that manufacturers give access to documentation, parts, and tools needed to diagnose, maintain, or repair our electronic and appliance products. It's a win-win for everyone, with Apple and HP lending their support to slow down electronic waste and boost independent repair shops. From cell phones to laptops and home appliances, this law covers it all.



Holiday 2023 | Growing Green Glendale | City of Glendale



The City of Glendale is also partaking in this repair revolution. At the Central Library, we have the MakerSpace filled with sewing machines, 3D printers, paints, tools, and so on. All of which can be freely used to repair a dress or shirt, print out a replacement part, or upcycle a beloved item. Last May, we held our first repair event with the Pasadena Repair Cafe. They volunteered their members who helped repair over 133 items! - from jewelry, shears, pants, chairs, and more.

We're expanding our community repair work. The Library team is looking to roll out MakerSpaces to more branches, and we've partnered with the Library team to bring you repair cafes quarterly. The next one is December 9th at the Library Connection @ Adams Square from 10:00 AM - 1:00 PM. You can bring a broken item for repair, or join our volunteer team of tinkers, stitchers, and fixers to help give new life to others' treasured trove.

If you would like to volunteer, you can [sign up here!](#)



★ GLENDALE CLOTHING SWAP ★

Saturday, December 2, 2023

10:00AM- 12:00PM

Library Connection @ Adams Square

1100 E. Chevy Chase Dr, Glendale, CA 91205

Swap to find your next holiday party outfit and present!

Bring up to 10 lightly used and clean clothing items.

No shoes and accessories, but children's clothing is okay.

Items can be dropped off at the Library Connection on Thursday, November 30th or at the event.



For more information, visit GlendaleCA.gov/ClothingSwap

REPAIR CAFÉ

TORN JEANS? BROKEN TOASTER? DULL KNIFE?
FAULTY LAMP? WE CAN HELP WITH THAT!

Saturday, December 9, 2023 • 10:00AM-1:00PM

Library Connection @ Adams Square

1100 E. Chevy Chase Dr, Glendale, CA 91205

Join us for a community repair event with skilled tinkers and stitchers to help you give your loved items another life.

Items must be in clean condition in order to be repaired.

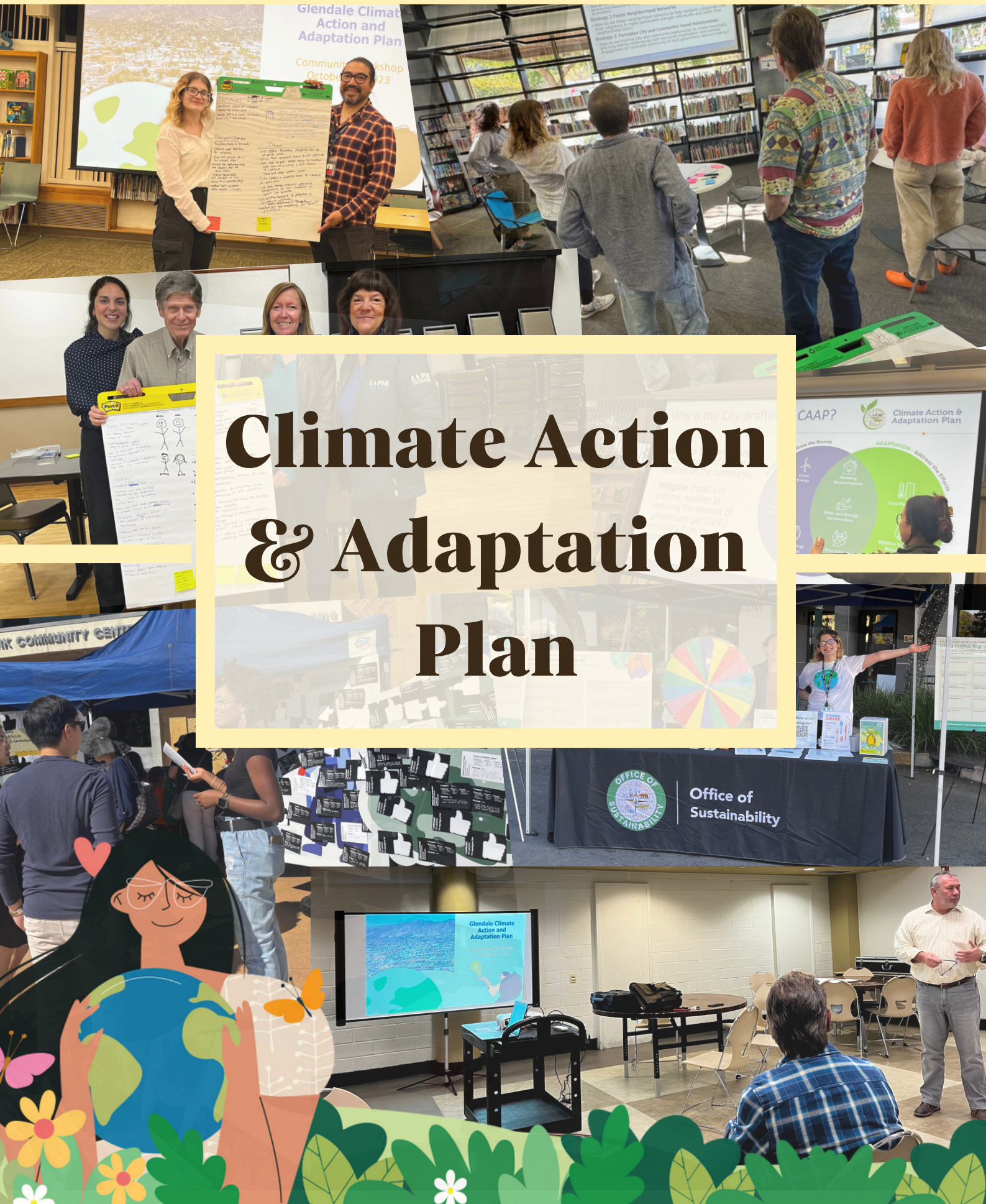
We do not guarantee repair of all items and do not provide replacement parts.

Learn more at GlendaleCA.gov/RepairCafe



Learn more at :





Climate Action & Adaptation Plan



The City of Glendale is stepping up to the plate with an ambitious plan – the Climate Action and Adaptation Plan (CAAP). This plan will serve as a roadmap for the community; it's central to a better, more sustainable, and resilient Glendale. Its mission is to reduce greenhouse gas emissions and increase our ability to deal with extreme weather, like heat waves which are becoming more severe.

To do so, strategies may include providing better transportation options such as public transit, carpooling, cycling, and electric vehicles as well as replacing natural gas appliances with more efficient electric versions.

But people's involvement in the CAAP process is crucial; therefore, please provide us with feedback by sharing, taking the survey, emailing us, and participating in the word cloud. And be on the lookout for more workshops in Spring 2024!

Get Involved!

Thank You to Everyone Who Participated and Shared Feedback!



So Far We Have....

Participated in 11 community events!



Conducted 18 public workshops.

Collected 247 comment cards!



Received 437 Greener Glendale Wishes

Spoken with 551 individuals about the CAAP.

Thank You For All of Your Help!





Bicycle Transportation Plan



Creating a Safer, More Connected Glendale for All

Help us pedal to a greener Glendale! Vehicles Mile Travel (VMT) is the largest producer of greenhouse gas emissions, and the City of Glendale is updating its 2012 Bicycle Transportation Plan (BTP) to make it safer and easier to get around by bike.

Please take a few minutes to review the preliminary bike safety improvements on the city's interactive, online map. Add your comments by December 6 to help shape the draft recommendations before they're shared with City Council.

[Add Here!](#)



The preliminary bike network was developed by combining an analysis of safety and connectivity with input received from the public. We heard from community members that 75% feel unsafe or very unsafe riding their bikes in Glendale and that people want a bike network that serves people of all ages so that they can bike for school, work, errands, and recreation. We look forward to hearing from you and creating a greener Glendale! For more information visit the website [here!](#)



Plastics Reduction Regulation



Help us provide a clean and livable space for all! Although practical, plastics present environmental issues, mainly in the form of pollution and impacts on human health. Here are a few reasons why:

- 1 Plastic is the primary** source of land litter in California. It comprises 7 of the top 10 litter products found on beaches, with food service ware ranking fourth highest.
- 2 Plastic litter infiltrates** City drainage systems and accrues in landfills with a lifespan likely lasting centuries.
- 3 Traditional petroleum-based** plastics rely on nonrenewable energy sources for production and recovery, contributing to an increasing global carbon footprint throughout their lifecycle.

4 Polystyrene products are notoriously difficult to recycle, and a significant amount eventually ends up in landfills.

To help keep our community clean and healthy, City Council adopted an ordinance prohibiting the use, distribution, and selling of certain polystyrene products. Polystyrene products are defined by the letters PS/EPS or the resin code 6 and include rigid and foam-style products.

The City has included certain exceptions from the ordinance, to learn more, and to provide input please:

[Click Here!](#)



LIBRARY AT MAPLE PARK

Join us at the Maple Park playground area for
StoryWalks® and crafts!

Wednesdays 11/22, 11/29, 12/6, 12/13
10 AM - 12 PM

Maple Park
820 E. Maple St.
Glendale, CA 91205

Come check
out our
Library on
Wheels!



Holiday 2023 | Growing Green Glendale | City of Glendale



The City of Glendale and Community Services & Parks Department cordially invite you to the



Holiday Tree Lighting Ceremony

Thursday, November 30, 2023 | 6:00PM

City Hall Perkins Plaza

613 E. Broadway, Glendale, CA 91206

Featuring: Lighting of the City Hall tree, special performances and a visit from Santa. Don't forget to bring your unwrapped toy for the Cram-A-Classic Toy Drive!

Cram-A-Classic Toy Drive

Friday, November 24, 2023 | 5:30PM-7:30PM

Montrose Shopping Center

Corner of Honolulu and Ocean View Blvd.

Thursday, November 30, 2023 | 6:00PM-8:00PM

Holiday Tree Lighting Event

141 N. Glendale Ave., Glendale, CA 91206

(Next To The Tree Lighting Ceremony)

Glendale Fire Department and ABC7, in conjunction with Community Services & Parks, invite you to bring a new, unwrapped toy to one of the Toy Drive events. Help us cram our classic fire truck with toys! Glendale Firefighters will collect and distribute toys to underserved children in our community. The children depend on the generosity of our community.



Community Services & Parks

Free parking at City Hall located at the Civic Center Visitors Parking Structure at 620 E. Wilson Ave., Glendale, CA 91206

In case of rain, the events may be cancelled. For more information, please call (818) 937-7429 or email: GMirzakhaniyan@GlendaleCA.gov



@MyGlendaleParks





Join us for our
**Riverwalk Fall Tree
Planting!**

Join the Glendale Parks & Open Space Foundation for an exciting end-of-fall volunteer opportunity to plant 15 new trees at Glendale Narrows Riverwalk!

**Saturday, December 2, 2023,
9am to 1pm
at
Glendale Narrows Riverwalk**

Please bring gloves, and your own reusable water bottle.

Please wear closed-toe shoes!

Parking is limited, please consider carpooling!



Scan here for
directions to parking





Community Services
& Parks



YOUTH & FAMILY SERVICES PRESENTS:

TEEN NIGHT OUT

5:00 P.M. – 9:00 P.M.

For ages 13 -18

FREE SNACKS, REFRESHMENTS & PRIZES

**HANG OUT WITH YOUTH & FAMILY SERVICES
AND ENJOY PING PONG, PS 4, POOL, AND KARAOKE.**



LOCATION AND DATES

**PACIFIC COMMUNITY CENTER
501 S. PACIFIC AVE.
GLENDALE, CA 91204**

DECEMBER 1, 8, 15, 2023

JANUARY 12, 19, 26, 2024

FEBRUARY 2, 9, 16, 23, 2024

To register or for more information, call or email Community Services Supervisor,
John Maghaguian, at (818) 937-7247 or JMaghaguian@GlendaleCA.gov





**Community Services
& Parks**

**GLENDALE PARKS &
OPEN SPACE
FOUNDATION**

Trails & Open Space Program

BIRDWALK ON THE RIVERWALK

Saturday, December 9, 2023

8:00 AM - 10:00 AM

Glendale Narrows Riverwalk

300 Paula Avenue, Glendale, CA 91201

Join us for our annual bird watching trek along the Los Angeles River in the City of Glendale. This is a rare opportunity to spend time watching the birds that are on the river during the fall and winter months. Our leader for the morning is Alexander deBarros of the San Fernando Valley Audubon Society. Please bring your binoculars, camera, and water.

• **Please RSVP at [GlendaleCA.gov/Trails](https://www.GlendaleCA.gov/Trails)**



GO!

Glendale Outdoors

Community Program

FREE AND OPEN TO ALL FAMILIES!

Investigate the natural world through a nature craft, explore the Stone Barn Nature Center, and make wild discoveries alongside your family on the trail!

Deukmejian Wilderness Park & Stone Barn Nature Center
3429 Markridge Rd., Glendale, CA 91214

Saturdays: December 9, 2023, January 13, February 10, 2024
9:00 am - 12:00 pm

- Free bus provided, leaving from **Pacific Community Center**, 501 S. Pacific Ave., Glendale 91204 at 8:30 am and returning at 12:30 pm.

OR

- Participants may meet at **Deukmejian Wilderness Park** beginning at 8:45 am.

Adult supervision is required!

One adult for every three children 17 years and under is required.

Please wear sturdy shoes, protective clothing and bring a water bottle.

Visit GlendaleCA.gov/Trails to RSVP online.
For more information call (818) 937-7428.

Հայերեն տեղեկությունների համար զանգահարել (818) 548-2000
Para información en español, llame a (818) 548-2000



Community Services
& Parks



@MyGlendaleParks





Community Services
& Parks

GLENDAL PARKS &
OPEN SPACE
FOUNDATION

Trails & Open Space Program

Holiday at the Stone Barn

SATURDAY, DECEMBER 9, 2023

5:00 PM - 7:00 PM

Stone Barn Nature Center
Deukmejian Wilderness Park

3429 Markridge Road, Glendale, CA 91214

For more information call (818) 548-3795.

Para información en español, llame a
(818) 548-2000.

Հայերեն տեղեկությունների համար
զանգահարել (818) 548-2000.



Join us for a family-oriented evening of holiday entertainment in the Stone Barn Nature Center at Deukmejian Wilderness Park. Featured entertainment includes: The Magic of Mark Brifman, music by The Street Symphony and the Towne Singers. We will serve hot chocolate and cookies.

Seating is limited.

Please RSVP at GlendaleCA.gov/Trails.

This event is FREE!





**GLENDALE BEAUTIFUL
INVITES THE COMMUNITY TO**

Fiesta de Las Luminarias

Join us for this free event at the historic Casa Adobe surrounded in candlelight. Enjoy traditional refreshments and entertainment inside the adobe and throughout the park!



Entertainment By:
Incarnation Children's Choir
Tonantzin Dance Group

Glendale's Historic Casa Adobe De San Rafael Park
1330 Dorothy Drive, Glendale, CA 91202



**Glendale
Beautiful**



Saturday,
December 9TH



The Event
Starts at 6:00 PM



Community Services
& Parks





Parent's Night Out

Drop off the kids to have a night out as parents, while the kids enjoy pizza, fun, friends and a movie at Pacific Community Center. Participants are encouraged to bring pajamas, blanket, and a pillow.

December 22, 2023

Time: 6:00 p.m. - Midnight | Ages: 6 to 12 years old | Cost: \$15.00 per child

Pacific Community Center

501 S. Pacific Ave., Glendale, CA 91204

(818) 548-4098

Register online via MyGlendaleParks.com

Space is limited!



Community Services
& Parks

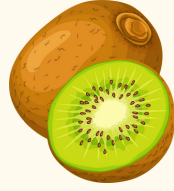
Parks
Make
Life
Better!



What's in Season this Winter?



Apples



Kiwis



Kumquats

Avocados

Broccoli



Lemons

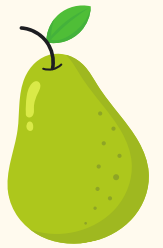


Brussels sprouts

Mustard greens

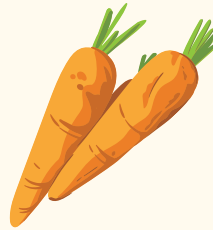
Cabbage

Oranges



Carrots

Pears



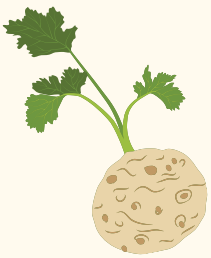
Cauliflower

Persimmons

Celery root



Radish



Clementine

Sweet potatoes

Fennel

Tangerines



Grapefruit



Turnip greens



Kale

Winter squash

Get in Contact:

City of Glendale: Office of Sustainability
Sustainability@GlendaleCA.gov
818 548 4844

Access our [Newsletter](#)
[Archive here](#)