



CITY OF GLENDALE, CALIFORNIA

Public Works
Engineering

633 E. Broadway, Suite 205

Glendale, CA 91206-4310

Tel. (818) 548-3945 Fax (818) 242-7087

glendaleca.gov

March 11, 2024

ADDENDUM NO. 1

La Crescenta Avenue Rehabilitation Project Specification No. 3829

To All Prospective Bidders:

Please note the following requirements as part of the bid proposal for the subject project:

1. **Bid Forms:** Replace Page F-10 of "Bid Forms" with attached Page F-10R:
 - Revision of Quantities of Bid Item No. G1 and G2.
2. **Payment Items:** Replace Pages PI-13 and PI-14 of "Payment Items" with attached Pages PI-13R and PI-14R, respectively:
 - Revision of Payment Item No. G1.
3. **Appendix G – Construction Plans:**
 - Revision of Bio-Retention Plan No. 18-114, to include cross section of bio-retention concrete wall, attached hereon.
 - Revision of Sewer Plan No. 3-1572, to include construction note showing removing and replacing existing guardrail on Sheet 12, attached hereon.

The bid deadline and opening date has not been changed. This addendum **MUST** be signed by the bidder and submitted along with the bid package. No bids will be accepted without the signed addendum.

Sincerely,

Sarkis Oganessian
Deputy Director of Public Works / City Engineer

Acknowledgement:

Bidder: _____ Date: _____

Title: _____

Copy: Suzie Abajian, Ph.D., City Clerk
Daniel Hernandez, Interim Director of Public Works
Armen Avazian, P.E., Principal Civil Engineer
Tahmasb Arasteh, Construction Services Manager
Viktoria Pakhanyan, P.E., Senior Civil Engineer
Rustom Tavitian, P.E., Civil Engineer II
Project File

BID FORMS

SCHEDULE OF BID PRICES

S9	REMOVE, SALVAGE, AND REINSTALL SECTION OF EXISTING GUARDRAIL SYSTEM *	1	LS		
S10	REMOVE, SALVAGE, AND REINSTALL SECTION OF EXISTING 54-INCH RCP STORM DRAIN MAIN LINE *	15	LF		
S11	RECONSTRUCT SEWER MANHOLE SHELF (8"-12" CHANNEL)	8	EA		
S12	RECONSTRUCT SEWER MANHOLE SHAFT, SHELF, AND CHANNEL (8"-CHANNEL)	3	EA		
S13	CCTV INSPECTION OF EXISTING STORM DRAIN AND/OR SANITARY SEWER LINE BEFORE AND AFTER SEWER CONSTRUCTION *	497	LF		
S14	SUPPORT EXISTING UTILITY	11	EA		
S15	SUPPORT EXISTING UTILITY (LARGER THAN 24-INCHES)	2	EA		
S16	INSTALL SANITARY SEWER ENCASEMENT *	128	LF		
S17	FURNISH AND INSTALL EPOXY LINER TO MANHOLE SHAFT, SHELF, AND CHANNELS	6	EA		
S18	SUPPORT EXISTING WATER LINE PER GWP PLAN NO. 1668-A *	1	EA		
S19	RECONSTRUCT 8-INCH VCP SANITARY SEWER MAIN LINE (POINT REPAIR)	61	LF		
S20	INSTALL FULL CIPP LINING FOR 8-INCH SANITARY SEWER MAIN LINE	198	LF		
S21	INSTALL PARTIAL CIPP LINING FOR 8-INCH SANITARY SEWER MAIN LINE	18	LF		
S22	REMODEL SEWER HOUSE CONNECTION *	30	EA		
La Crescenta Avenue Catch Basin Bicycle Friendly Surface Grate Installation Plan No. 4-650					
G1R	REMOVE AND RECYCLE EXISTING CATCH BASIN GRATES	99	EA		
G2R	FURNISH AND INSTALL BICYCLE PROOF CATCH BASIN GRATE	99	EA		

service lines per GWP Standard Drawing 1668-A Sheet 1 in Appendix F, as shown on the plans, including steel beam and supports.

- S19. Payment for “Reconstruct 8-Inch VCP Sanitary Sewer Main Line (Point Repair)”** will be made at the contract unit price for Item No. S9, per Linear Foot, which shall include all costs for furnishing all labor, materials, tools, and equipment, and for doing all the work involved in furnishing and laying 8-inch diameter vitrified clay pipe sanitary sewer, complete in place, as shown on the plans, including mainline wyes, where required, including marking of removal limits, saw-cutting, excavation, shoring of excavation, removal and disposal of existing main line sewer, including any concrete encasement, sewer bypass, bedding, backfilling, compaction of backfill, setting pipe, elevations, temporary trench resurfacing including the removal and proper disposal of the same prior to permanent trench resurfacing, trench plates (grinding pavement so plates are flush if required), permanent trench resurfacing, performing CCTV inspection of all pipeline point repairs and submitting the post-repair tapes to the Engineer for review prior to placing of permanent trench resurfacing, removal and replacement of conflicting asphalt and/or Portland cement concrete pavements, disposal of all construction debris, and all incidentals, as directed by the Engineer.
- S20. Payment for “Install Full CIPP Lining for 8-Inch Sanitary Sewer Main Line”** will be made at the contract unit price for Item No. S20, per Linear Foot, which shall include all costs for furnishing all labor, materials, tools, and equipment, and for doing all the work involved in furnishing and laying a cured-in-place, deformed/reformed, folded and reformed method of pipe lining for full length 8-inch vitrified clay pipe sanitary sewer line (manhole to manhole), complete in place, as shown on the plans, including field markings, opening all lateral connections, construction survey, traffic control, access walkways, sewer by-pass, crack sealing to eliminate infiltration prior to lining; cleaning, routing, flushing, and video taping of the line prior to and after lining; debris and tree root removal; disposal of construction debris, and all incidentals, as directed by the Engineer.
- S21. Payment for “Install Partial CIPP Lining for 8-Inch Sanitary Sewer Main Line”** will be made at the contract unit price for Item No. S21, per Linear Foot, which shall include all costs for furnishing all labor, materials, tools, and equipment, and for doing all the work involved in furnishing and laying a cured-in-place pipe lining for sections of 8-inch vitrified clay pipe sanitary sewer line, complete in place, as shown on the plans, including field markings, opening all lateral connections, construction survey, traffic control, access walkways, sewer by-pass, crack sealing to eliminate infiltration prior to lining; cleaning, routing, flushing, and video taping of the line prior to and after lining; debris and tree root removal; disposal of construction debris, and all incidentals, as directed by the Engineer.
- S22. Payment for “Remodel Sewer House Connection **”** will be made at the contract unit price for Item No S22, per Each, which consists of remodeling existing sewer house connection for 12-inch mainline sewer, including removal and disposal of existing house connection and remodeling to mainline wye with polyvinyl chloride pipe of size to match up to private property line, including capping of sewer laterals per SPPWC Plan No. 223-3, as shown on the plans, and all incidentals, as directed by the Engineer.

Catch Basin Improvements

Plan No. 4-650

- G1R. Payment for “Remove and Recycle Existing Catch Basin Grates”** will be made at the contract unit price for Item No. G1R, per Each, which shall include all costs for furnishing all labor, materials, tools, and

equipment, and for doing all the work involved in removal and recycling of existing catch basin grates, removing and salvaging existing welded steel angle if applicable, coordinating with LACDPW for inspection, complete in place, as shown on the plans, including traffic control, removal, haul away, and recycle of storm drain grates, and all incidentals as directed by the Engineer.

- G2. Payment for “Furnish and Install Bicycle Proof Catch Basin Grate”** will be made at the contract unit price for Item No. G2, per Each, which shall include all costs for furnishing all labor, materials, tools, and equipment, and for doing all the work involved in furnishing and installing bicycle friendly catch basin surface grates per Glendale Bike Grate plans, including hot dip galvanizing, verifying existing catch basin frame measurements, providing shop drawings for approval, providing traffic control, cleaning of existing frame from dirt and debris, coordinating with LACDPW for inspection, complete in place, as shown on the plans, and all incidentals, as directed by the Engineer.
- G3. Payment for “Los Angeles County Flood Control Permit Fee Allowance”** will be made at the contract unit price for Item No. G3, per Allowance, which shall include all costs for furnishing all administrative work including labor, coordination, and doing for all the work involved in obtaining a Los Angeles County Flood Control Permit to remove and replace catch basin grates with bicycle friendly catch basin grates per Glendale Bike Grate detail, complete in place, as shown on the plans, and all incidentals, as directed by the Engineer. No additional mark-ups or charges will apply in obtaining this permit.

Traffic Striping, Pavement Markings, and Signs **Plan No. 49-247**

Payment will be made at the contract unit prices for **Item Nos. T1 through T38** which shall include all costs for furnishing all labor, materials, tools and equipment for doing all the work involved in the installation of thermoplastic striping, paint striping, pavement markings, pavement markers, curb markings and signs complete in place and operational **per Plan Nos. 1-3071 and 49-247** and as specified in the Standard Specifications and the Special Provisions and all incidentals.

- T1.** Item No. T1, consists of installing Thermoplastic White Type IV (L) Pavement Marking Arrow per Caltrans Standard Plan No. A24A, per Each.
- T2.** Item No. T2, consists of installing Thermoplastic White Type IV (R) Pavement Marking Arrow per Caltrans Standard Plan No. A24A, per Each.
- T3.** Item No. T3, consists of installing Thermoplastic 8-Inch-Wide Solid Yellow Diagonals (Angled 30 to 45 Degrees) With 40' O.C. Spacing with Type D Two-Way Yellow R.P.M Per Caltrans Standard Plan No. A240D, per Each.
- T4.** Item No. T4, consists of installing Caltrans Approved Preformed Thermoplastic White “Sharrow” With Green Background Pavement Share Lane Symbol per City of Glendale Placement Standards, per Each.
- T5.** Item No. T5, consists of installing Thermoplastic 8-Foot High “Stop” Pavement Marking per Caltrans Standard Plan No. A24D, per Each.

Sanitary sewer layout plan showing two manholes (MH 060043 and MH 060040) with associated sewer lines, elevations, and flow data. The plan includes existing infrastructure like a water main, gas line, and a creek, as well as proposed 12-inch P.V.C. sewer lines. A scale bar indicates 1 inch equals 20 feet horizontally and 4 feet vertically.

Manhole 060043:
 STA 12+00.00 RIM ELEV=1174.14
 MH NO. 060043
 35 LF - 12" P.V.C. d/D=0.36, Q_u= 0.90 cf

Manhole 060040:
 STA 12+63.86 RIM ELEV=1174.65
 MH NO. 060040
 20 LF - 12" P.V.C. d/D=0.36, Q_u= 0.90 cfs

Existing Infrastructure:
 - 12" Water Main
 - 8" Water
 - 4" Gas
 - Existing ±6" A.C. Pavement Surface La. Crescenta Ave.
 - Existing Parkway
 - Existing Guardrail
 - EXIST. 8" SANITARY SEWER VCP TO BE REPLACED WITH 12" SANITARY SEWER POLYVINYL CHLORIDE PIPE
 - EXIST. 8" SANITARY SEWER VITRIFIED CLAY PIPE PROTECT IN PLACE
 - PICKENS CANYON CHANNEL (LACFCD) PROTECT IN PLACE

Proposed Infrastructure:
 - 12" Water Main
 - 8" Water
 - 4" Gas
 - EXIST. 8" SANITARY SEWER VCP TO BE REPLACED WITH 12" SANITARY SEWER POLYVINYL CHLORIDE PIPE
 - EXIST. 8" SANITARY SEWER VITRIFIED CLAY PIPE PROTECT IN PLACE
 - 12" P.V.C. d/D=0.36, Q_u= 0.90 cf

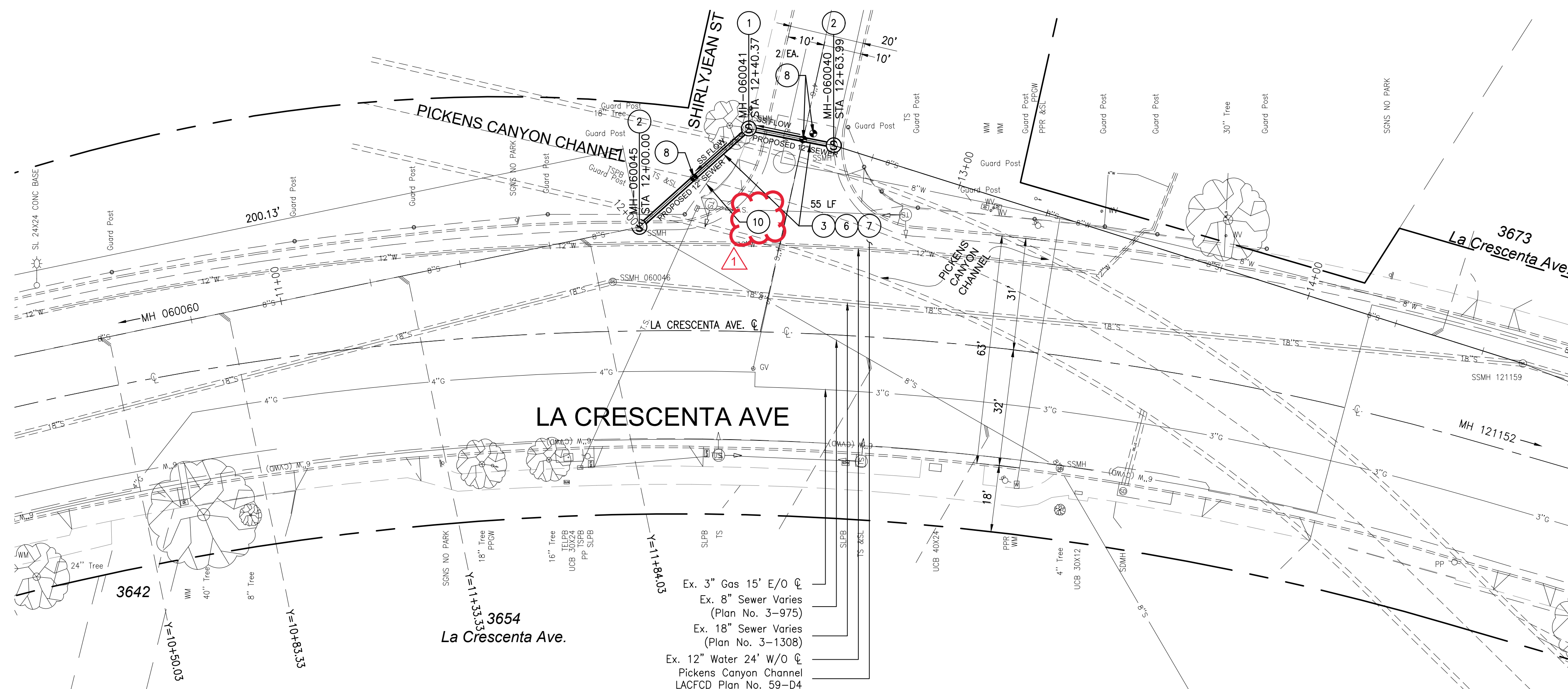
Elevations and Slopes:
 - 1174.14 (RIM ELEV)
 - 1174.65 (RIM ELEV)
 - 1170.60 INV-IN (1170.81 INV-IN)
 - 1165.89 INV-IN
 - 1170.74 INV-OUT (1170.82 INV-OUT)
 - 1170.76 INV-IN (1170.83 INV-IN)
 - 1170.83 INV-OUT (1170.83 INV-OUT)
 - 1170.84 INV-OUT
 - 1172.80 INV-IN
 - 1171.08 INV-IN
 - S=0.0321
 - S=0.0039
 - S=0.0180

Scale:
 HORIZ. 1"=20'
 VERT. 1"=4'

- 1 REMOVE EXISTING MANHOLE AND CONSTRUCT 4-FOOT DIAMETER PRECAST CONCRETE SEWER MANHOLE PER SPPWC STD. PLAN NO. 200-4 WITH 24" MAHOLE FRAME AND COVER SET PER SPPWC STD. PLAN NO. 210-4.
- 1a CONSTRUCT 4-FOOT DIAMETER PRECAST CONCRETE SEWER MANHOLE PER SPPWC STD. PLAN NO. 200-4 WITH 24" MAHOLE FRAME AND COVER SET PER SPPWC STD. PLAN NO. 210-4.
- 1b CONSTRUCT 4-FOOT DIAMETER DROP SEWER MANHOLE (PRECAST CONCRETE) PER SPPWC STD. PLAN NO. 202-2 WITH 24" MAHOLE FRAME AND COVER SET PER SPPWC STD. PLAN NO. 210-4.
- 2 REMOVE EXISTING MANHOLE AND CONSTRUCT 4-FOOT DIAMETER DROP SEWER MANHOLE (PRECAST CONCRETE) PER SPPWC STD. PLAN NO. 202-2, WITH 24" MANHOLE FRAME AND COVER SET PER SPPWC STD. PLAN NO. 210-4.
- 3 REMOVE EXISTING 8-INCH V.C.P. SEWER PIPE AND CONSTRUCT 12-INCH P.V.C.. SEWER PIPE.
- 4 CONSTRUCT 12-INCH P.V.C. SEWER PIPE.
- 5 RECONNECT EXISTING SEWER HOUSE CONNECTION TO PROPOSED 12" SANITARY SEWER LINE PER SPPWC STD. PLAN NO. 222-2 AND 223-2. EXTEND PIPE CONNECTION AS NECESSARY TO ATTAIN MIN. 2% SLOPE.
- 6 TRENCH BACKFILL SLURRY MIX (1-SACK SAND CEMENT PER CUBIC YARD) UP TO THE BOTTOM OF EXISTING PAVEMENT, SEE SHEET X FOR TRENCH DETAIL.
- 7 VIDEO TAPE PROPOSED SEWER LINE AFTER CONSTRUCTION.
- 8 PERFORM POTHOLE OR EXCAVATION TO DETERMINE LOCATION AND DEPTH OF EXISTING UNDERGROUND UTILITIES AND CLEAR DISTANCE TO NEAREST SEWER PIPE AND MANHOLE.
- 9 REMOVE PORTION OF EXISTING 8-INCH SANITARY SEWER LINE, FILL WITH 1-SACK SLURRY AND SEAL BOTH ENDS WITH BRICK AND MORTAR PER SPPWC STD. PLAN NO. 380-2.
- 10 REMOVE EXISTING GUARDRAIL SYSTEM PRIOR TO SEWER IMPROVEMENT WORK, AND REINSTALL IN KIND POST CONSTRUCTION. (MIDWEST GUARDRAIL SYSTEM PER CALTRANS STANDARD PLAN A7L2 (STEEL POST, 9' DEEP POST)).
- 11 RECONSTRUCT EXISTING SEWER MANHOLE BASE AND CHANNEL PER SPPWC STD. PLAN NO. 208-2.
- 12 PROTECT IN PLACE AND SUPPORT EXISTING IMPROVEMENTS, INCLUDING STREET AND TRAFFIC LIGHT POLES AND FOUNDATION.
- 13 VIDEO TAPE EXISTING STORM DRAIN OR SANITARY SEWER LINE BEFORE AND AFTER SEWER CONSTRUCTION.
- 14 POINT REPAIR - REMOVE A PORTION OF EXISTING 8" V.C.P. SEWER PIPE AND CONSTRUCT HIGH STRENGTH V.C.P. SEWER PIPE SIZE AS SHOWN ON THE PLANS, AND PER REPAIR SCHEDULE HEREIN (SEE "EXISTING UTILITIES" FOR APPROXIMATE UTILITY LOCATIONS IN VICINITY).
- 15 FULL LINING REPAIR - INSTALL C.I.P.P. LINING FOR 8" SANITARY CAST IRON PIPE PER REPAIR SCHEDULE HEREIN.
- 16 SECTIONAL LINING - INSTALL C.I.P.P. LINING FOR 8" V.C.P. SANITARY SEWER LINE PER REPAIR SCHEDULE HEREIN.
- 17 SUPPORT EXISTING UTILITY PER SPPWC STD. PLAN NO. 224-3.
- 18 INSTALL UTILITY ENCASEMENT PER LACDPW STD. PLAN NO. 2023-2, CASE II AND PER ENGINEER'S DIRECTION IN THE FIELD.
- 19 FURNISH AND INSTALL EPOXY LINER TO MANHOLE SHAFT, SHELF, AND CHANNEL.
- 20 REMOVE AND REPLACE EXISTING 54-INCH STORM DRAIN PIPE. (OPTIONAL)
- 21 SUPPORT EXISTING UTILITY (LARGER THAN 24-INCHES).
- 22 REMODEL EXISTING SEWER HOUSE CONNECTION.

POTHOLING FOR DETERMINING LOCATION OF THE EXISTING UNDERGROUND UTILITIES SHALL BE DONE PRIOR TO START OF PIPE INSTALLATION AND TRENCH EXCAVATION AND NOT DURING.

CONTRACTOR MUST SUPPORT STORM DRAIN LINE PARALLEL AND JUST OFFSET OF NEW SEWER LINE DURING EXCAVATION IN CASE OF SOIL FAILURE AND SLOUGHING.



LA CRESCENT AVENUE WASTEWATER CAPACITY IMPROVEMENT PROJECT				
REV. NO.	REVISION DESCRIPTION	REV. DATE	REV. BY	
1	ADDITION OF CONST. NOTE 10 ON PLANS	3/5/24	RT	
2	-	-	-	
3	-	-	-	

PUBLIC WORKS DEPARTMENT
ENGINEERING DIVISION
CITY OF GLENDALE
CALIFORNIA

PLAN NO.
3-1572
SHEET 12 OF 12 SHEETS

CONSTRUCTION NOTES

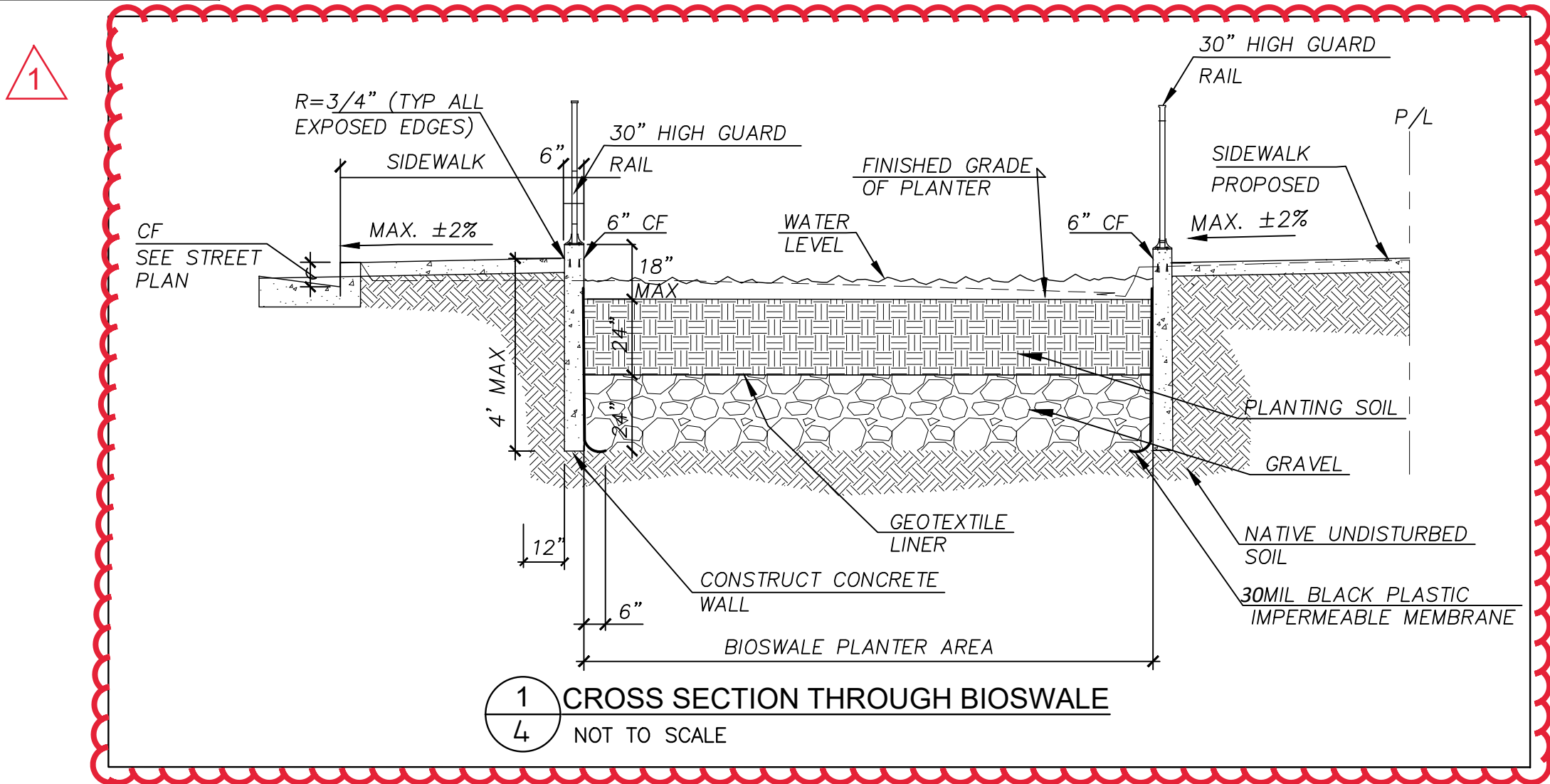
- 1— CONSTRUCT BIO-RETENTION SYSTEM.
2— FURNISH AND INSTALL METAL GUARD RAILING AND ACCESS GATE PER DETAIL NO.2 ON SHEET 2.
3— PROPOSED WATER METER AND BACKFLOW DEVICE LOCATION FOR BIO-RETENTION FACILITIES. GWP INSPECTOR TO APPROVE FINAL LOCATION ON FIELD.

UTILITIES:

POTHOLING FOR DETERMINING LOCATION OF THE EXISTING UNDERGROUND UTILITIES SHALL BE DONE PRIOR TO START OF PIPE INSTALLATION AND TRENCH EXCAVATION AND NOT DURING. CONTRACTOR MUST SUPPORT STORM DRAIN LINE PARALLEL AND JUST OFFSET OF NEW SEWER LINE DURING EXCAVATION IN CASE OF SOIL FAILURE AND SLOUGHING.

PLANT SCHEDULE

SHRUBS	BOTANICAL NAME/COMMON NAME	SIZE	SPACING	QTY
	Ceanothus griseus horizontalis 'Yankee Point'/California Lilac	1 gal	3'-4'	5
	Mimulus aurantiacus/Sticky Monkey Flower	1 gal	2'	13
	Myrica californica/Pacific Wax Myrtle	5 gal	8'-10'	1
GRASSES	BOTANICAL NAME/COMMON NAME	SIZE	SPACING	QTY
	Festuca glauca 'Elijah Blue'/Blue Fescue	1 gal	10"-12"	2
	Lomandra longifolia 'Breeze'/Dwarf Mat Rush	5 gal	2'	5
GROUND COVERS	BOTANICAL NAME/COMMON NAME	CONT	SPACING	QTY
	Carex tumulicola/Berkeley Sedgeplugs	9" o.c.	2'	5



BIO-RETENTION # 1

PLANT SCHEDULE

SHRUBS	BOTANICAL NAME/COMMON NAME	SIZE	SPACING	QTY
	Ceanothus griseus horizontalis 'Yankee Point'/California Lilac	1 gal	3'-4'	4
	Mimulus aurantiacus/Sticky Monkey Flower	1 gal	2'	9
	Myrica californica/Pacific Wax Myrtle	5 gal	8'-10'	1
GRASSES	BOTANICAL NAME/COMMON NAME	SIZE	SPACING	QTY
	Festuca glauca 'Elijah Blue'/Blue Fescue	1 gal	10"-12"	2
	Lomandra longifolia 'Breeze'/Dwarf Mat Rush	5 gal	2'	5
GROUND COVERS	BOTANICAL NAME/COMMON NAME	CONT	SPACING	QTY
	Carex tumulicola/Berkeley Sedgeplugs	9" o.c.	2'	5

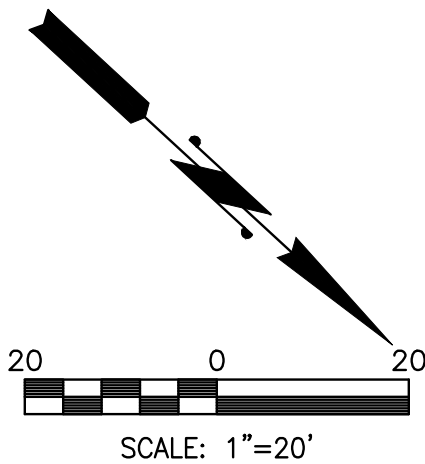
BIO-RETENTION # 2

PLANT SCHEDULE

SHRUBS	BOTANICAL NAME/COMMON NAME	SIZE	SPACING	QTY
	Ceanothus griseus horizontalis 'Yankee Point'/California Lilac	1 gal	3'-4'	2
	Mimulus aurantiacus/Sticky Monkey Flower	1 gal	2'	3
	Myrica californica/Pacific Wax Myrtle	5 gal	8'-10'	1
GRASSES	BOTANICAL NAME/COMMON NAME	SIZE	SPACING	QTY
	Festuca glauca 'Elijah Blue'/Blue Fescue	1 gal	10"-12"	2
	Lomandra longifolia 'Breeze'/Dwarf Mat Rush	5 gal	2'	3
GROUND COVERS	BOTANICAL NAME/COMMON NAME	CONT	SPACING	QTY
	Carex tumulicola/Berkeley Sedgeplugs	9" o.c.	2'	3

LEGEND

--- PROPERTY LINE RIGHT OF WAY
--- PROPERTY LINE



LA CRESCENTA AVENUE BIO-RETENTION, LANDSCAPING, AND IRRIGATION PLANS

REV. NO.	REVISION DESCRIPTION	REV. DATE	REV. BY
1	ADDITION OF BIORETENTION CROSS SECTION	3/5/24	RT
2	-	-	-
3	-	-	-

PUBLIC WORKS DEPARTMENT
ENGINEERING DIVISION
CITY OF GLENDALE
CALIFORNIA

PLAN NO.
18-114
SHEET 4R OF 4 SHEETS