

Photo Report
Palmer Park
Programs, Services, and Activities

Finding: Palmer Park, located at 610 East Palmer in Glendale California, was inspected by Disability Access Consultants, Inc., on June 12, 2007.



Alternative *
Rec:
(Where Available)

Full Rec: Any renovation or new construction that occurred after January 26, 1992, is subject to meet full code specifications for the California Building Code and ADAAG requirements. All recommendations in this report are based on ADAAG and CBC title 24 requirements. Consult with your design professional to determine which elements are affected by these requirements. It is recommended that Disability Access Consultants, Inc. is consulted for inspection of any new construction or renovation at the facility.

Citations: ADAAG 4.1.2; ADAAG 4.1.3; ADAAG 4.1.5; ADAAG 4.1.6

Minimum Quantity:	1
Maximum Quantity	1
Minimum Estimated Cost:	\$0.00
Maximum Estimated Cost:	\$0.00

Record Number: 1104

Priority:

Palmer Park

Parking

Finding: There are two accessible parking spaces out of 33 parking spaces which is sufficient in number as required for compliance. The designated "van-accessible" parking space provided in the parking lot measures 109 inches wide and 180 inches long. The van-accessible parking space provides an access aisle, located on the passenger side (right side) of the parking space measuring 98 inches wide. The standard accessible parking space measures 112 inches wide and 179 inches long. The standard accessible parking space provides an adjacent access aisle measuring 92 inches wide. The access aisles do not contain "NO PARKING" in 12" high white letters.



Alternative *

Rec:
(Where Available)

Full Rec: Two out of the 33 total number of marked parking spaces meets the number required to be designated exclusively for accessible parking according to ADAAG and CBC 1129B. Restripe the designated accessible parking spaces to create one van-accessible and one standard accessible parking space, each measuring at least 108 inches wide and 216 inches long with an access aisle measuring at least 96 inches wide (8 feet) shared between the two accessible parking spaces (see CBC 1129B). The accessible parking space with the access aisle to the right of the space shall be designated "van-accessible." Add the words NO PARKING in 12 inch high white letters at the entrance to each accessible parking access aisle.

Citations: CBC 1129B; ADAAG 4.6; ADAAG A4.6

Minimum Quantity:	1
Maximum Quantity	1
Minimum Estimated Cost:	\$270.00
Maximum Estimated Cost:	\$270.00

Record Number: 1105

Priority:

Palmer Park

Parking

Finding: There is no crosswalk provided on the path of travel from the accessible parking spaces to the facility. The required accessible route crosses a vehicular way.



Alternative *

Rec:
(Where Available)

Full Rec: Stripe a crosswalk not less than 48 inches wide on the path of travel to the accessible entrance. Provide a level surface that does not exceed a slope greater than 5%. Cross slopes shall not exceed 2%. Detectable warnings should be placed at the entrance and exit of the crosswalk.

Citations: ADAAG 4.7.9

Minimum Quantity:	1
Maximum Quantity	1
Minimum Estimated Cost:	\$100.00
Maximum Estimated Cost:	\$100.00

Record Number: 1106

Priority:

Parking

Finding: The bottom edge of the post-mounted signage designating the accessible parking spaces is less than 80 inches above the level of the parking space and cannot be viewed when a vehicle is parked in the space.



Alternative *

Rec:
(Where Available)

Full Rec: Modify the height or replace the post-mounted signage designating the accessible parking spaces to provide at least 80 inches from the parking space finished grade to the bottom edge of the sign. The sign shall be located so that it cannot be obscured by a vehicle parked in the space (see CBC 1129B.5).

Citations: CBC 1129B.5; ADAAG 4.6.4

Minimum Quantity:	1
Maximum Quantity	1
Minimum Estimated Cost:	\$150.00
Maximum Estimated Cost:	\$150.00

Record Number: 1107

Priority:

Palmer Park

Parking

Finding: There is no warning signage posted at the entrance to the parking lot regarding unauthorized use of accessible parking spaces in the parking lot.



Alternative *

Rec:
(Where Available)

Full Rec: Post a sign in a conspicuous place to the entrance of the parking lot, or immediately adjacent to and visible from each accessible parking space. The warning sign shall measure at least 17 inches by 22 inches in size and consist of lettering at least 1 inch in height that clearly and conspicuously states the following; "Unauthorized vehicles parked in designated accessible spaces not displaying distinguishing placards or license plates issued for persons with disabilities may be towed away at owner's expense. Towed vehicles may be reclaimed at ____ or by telephoning ____ ." Fill in the blank spaces with appropriate information as a permanent part of the sign and maintain the currency of the information (see CBC 1129B.5). Be sure to add the CVC 22511.8(a)(d) to the sign.

Citations: CBC 1129B.5; ADAAG 4.6.4 CVC 22511.8(a)(d)

Minimum Quantity:	1
Maximum Quantity	1
Minimum Estimated Cost:	\$150.00
Maximum Estimated Cost:	\$150.00

Record Number: 1108

Priority:

Path of Travel

Finding: There is an accessible route from the public right of way to the accessible entrance of the facility.



Accessible Route from the Public Right of Way

Alternative *

Rec:
(Where Available)

Full Rec: Post directional signage. Make certain to post signage indicating the direction to accessible building entrances at every major junction along the accessible route. Signs shall include the International Symbol of Accessibility.

Citations: CBC 1114B.1.2; CBC 1117B.5.7; CBC 1127B.3; ADAAG 4.1.2(7); ADAAG 4.3.2; ADAAG 4.14.1

Minimum Quantity:	1
Maximum Quantity	1
Minimum Estimated Cost:	\$107.00
Maximum Estimated Cost:	\$107.00

Record Number: 1109

Priority:

Palmer Park
Path of Travel

Finding: At the time of facility inspection, the facility was undergoing renovation/construction and was unavailable for a complete ADA compliance inspection.



Construction

Citations: CBC 1101B.1; ADAAG 4.1.2; ADAAG 4.1.3; ADAAG 4.1.6

Minimum Quantity:	1
Maximum Quantity	1
Minimum Estimated Cost:	\$0.00
Maximum Estimated Cost:	\$0.00

Record Number: 1114

Priority:

Alternative *
Rec:
(Where Available)

Full Rec: All new construction or renovation shall comply with CBC 1101B.1 and ADAAG 4.1.2, ADAAG 4.1.3 and ADAAG 4.1.6. Due to the unavailability of a specific element at the time of the facility inspection process, it is recommended that upon completion of the construction/renovation all elements should be inspected for ADA compliance.

Path of Travel

Finding: At the time of facility inspection, the facility was locked and was unavailable for a complete ADA compliance inspection.



Maintenance Building

Citations: CBC 1101B.1; ADAAG 4.1.2; ADAAG 4.1.3; ADAAG 4.1.6

Minimum Quantity:	1
Maximum Quantity	1
Minimum Estimated Cost:	\$0.00
Maximum Estimated Cost:	\$0.00

Record Number: 1113

Priority:

Alternative *
Rec:
(Where Available)

Full Rec: Due to the unavailability of a specific element at the time of the facility inspection process, it is recommended that upon availability all elements should be inspected for ADA compliance.

Palmer Park
Path of Travel

Finding: There are slopes greater than 5% on the primary path of travel from the play equipment to the outdoor dining area.



Path of Travel to the Outdoor Dining Area

Citations: CBC 1133B.7.1.3; CBC 1133B.7.3; ADAAG 4.3.7

Minimum Quantity:	1
Maximum Quantity	1
Minimum Estimated Cost:	\$1,440.00
Maximum Estimated Cost:	\$1,440.00

Record Number: 1117

Priority:

Alternative *
Rec:
(Where Available)

Full Rec: Resurface the path of travel to provide a level surface that does not exceed a slope greater than 5%. Cross slopes shall not exceed 2%.

Path of Travel

Finding: The sink at the outdoor dining area does not provide an accessible forward approach.



Sink at the Outdoor Dining Area

Citations: ADAAG 4.19.3

Minimum Quantity:	1
Maximum Quantity	1
Minimum Estimated Cost:	\$420.00
Maximum Estimated Cost:	\$420.00

Record Number: 1120

Priority:

Alternative *
Rec:
(Where Available)

Full Rec: Sinks must provide clear floor space in front of the sink for an accessible forward approach and shall provide at least 27 inches clear knee space and a minimum of nine inches clear toe space (see ADAAG 4.19.2). If neither clear floor space and knee and toe clearance can be provided, remove the sink and replace with an accessible wall-mounted sink unit.

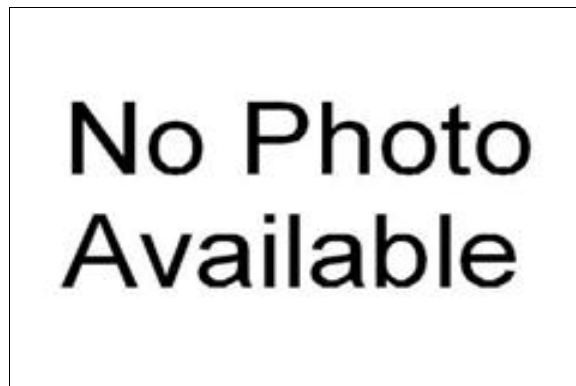
Palmer Park

Visual and Audible Communications

Finding: There is no directional signage to the accessible entrance from the public right of way or other common use areas.

Alternative *
Rec:
(Where Available)

Full Rec: Install directional signage to each common area complying with CBC 1117B.5 and ADAAG 4.30.



Directional Signage

Citations: CBC 1117B.5; ADAAG 4.30

Minimum Quantity:	1
Maximum Quantity	1
Minimum Estimated Cost:	\$58.00
Maximum Estimated Cost:	\$58.00

Record Number: 1122

Priority:

Visual and Audible Communications

Finding: The main entrance does not have accessible signage mounted on the wall adjacent to the latch side of the door.

Alternative *
Rec:
(Where Available)

Full Rec: Install signage centered at 60 inches above the finished floor on the wall adjacent to the latch side of the entry doorway stating ENTRANCE from the outside and EXIT from the inside, with raised UPPERCASE letters between 5/8 inch and 2 inches in height and Grade 2 Braille characters. The sign shall comply with the finish and contrast requirements set forth in CBC 1117B.5 and ADAAG 4.30.5. Signage should be located where a person may approach within three inches of the sign without encountering protruding objects or standing within the swing of the door.



Maintenance Building

Citations: CBC 1117B.5; ADAAG 4.30

Minimum Quantity:	1
Maximum Quantity	1
Minimum Estimated Cost:	\$58.00
Maximum Estimated Cost:	\$58.00

Record Number: 1112

Priority:

Palmer Park

Visual and Audible Communications

Finding: There is one pay telephone at the facility, located next to the restrooms.



Pay Telephone

Citations: CBC 1117B.2.1; ADAAG 4.31

Minimum Quantity:	1
Maximum Quantity	1
Minimum Estimated Cost:	\$0.00
Maximum Estimated Cost:	\$0.00

Record Number: 1110

Priority:

Alternative *

Rec:
(Where Available)

Full Rec: Contact the telephone company that owns the pay telephone regarding following items that do not comply with ADA requirements. The telephone company is responsible for ADA compliance, if the facility has no ownership in the pay telephone.

Visual and Audible Communications

Finding: The highest operable part of the pay telephone exceeds the side reach range of 54 inches. There is no electrical outlet within or adjacent to the telephone enclosure.



Pay Telephone Next to the Restrooms

Citations: CBC 1117B.2.6; CBC 1118B; ADAAG 4.31.3; ADAAG 4.2

Minimum Quantity:	1
Maximum Quantity	1
Minimum Estimated Cost:	\$0.00
Maximum Estimated Cost:	\$0.00

Record Number: 1111

Priority:

Alternative

Rec:
(Where Available)

Full Rec: Contact the telephone company that owns the pay telephone regarding the height of all the operating devices on the telephone. Electrical outlets within or adjacent to the telephone enclosure are required at pay telephones designed to accommodate a portable text telephone.

**Palmer Park
Restrooms**

Finding: There is no signage indicating accessibility on the latch side of the entry door of the restroom. There is no Title 24 gender use signage on the entrance door.

Alternative *
Rec:
(Where Available)

Full Rec: The restroom is designated accessible and should be made accessible for the facility. Post signage centered 60 inches above the ground surface on the latch side of the entrance door identifying the restroom as accessible upon completion of the following items (see CBC 1115B., ADAAG 4.1.2(7) and ADAAG 4.1.6(3)(e). Signage shall include Braille and raised lettering, the gender or unisex use symbol and the ISA symbol. Post Title 24 gender use signage on the door @ 60" o.c. a.f.f.



Men's Restroom

Citations: CBC 1115B.5; ADAAG 4.1.6; ADAAG 4.1.2(7); ADAAG 4.1.6(3)(e); ADAAG 4.30

Minimum Quantity:	1
Maximum Quantity	1
Minimum Estimated Cost:	\$58.00
Maximum Estimated Cost:	\$58.00

Record Number: 1123

Priority:

Restrooms

Finding: The door to the stall designated to be accessible in the restroom does not close automatically or have accessible hardware.

Alternative *
Rec:
(Where Available)

Full Rec: Provide an automatic door closer, spring hinge, pull bar or accessible handle mounted on the inside of the stall door to the stall designated to be accessible in the restroom (see ADAAG A4.17.5). Accessible hardware on the inside and outside of the stall designated to be accessible door shall be equipped with a loop or U-shaped handle mounted immediately below the latch. The latch shall be flip-over style, sliding or other hardware not requiring grasping or twisting. Make certain that the inside and outside door hardware is mounted no more than 48 inches above the finished floor (see CBC 115B.7.1.3 and ADAAG 4.13.9).



Men's Restroom

Citations: ADAAG A4.17.5

Minimum Quantity:	1
Maximum Quantity	1
Minimum Estimated Cost:	\$269.00
Maximum Estimated Cost:	\$269.00

Record Number: 1124

Priority:

**Palmer Park
Restrooms**

Finding: The height of the side grab bar in the stall designated to be accessible of the restroom is greater than 33 inches above the finished floor.



Men's Restroom

Citations: CBC 1115B.8.1; ADAAG 4.26

Minimum Quantity:	1
Maximum Quantity:	1
Minimum Estimated Cost:	\$448.00
Maximum Estimated Cost:	\$448.00

Record Number: 1125

Priority:

Alternative *
Rec:
(Where Available)

Full Rec: Remount the side grab bar in the stall designated to be accessible in the restroom so that the height of the gripping surface is centered at 33 inches above finished floor. Grab bars must be able to support a point load of at least 250 pounds and shall be less than the allowable shear stress of the grab bar material.

Restrooms

Finding: The flush control on the toilet in the stall designated to be accessible in the restroom is not on the wide (approach) side of the toilet.



Men's Restroom

Citations: ADAAG 4.16.5; ADAAG 4.27.4

Minimum Quantity:	1
Maximum Quantity:	1
Minimum Estimated Cost:	\$127.00
Maximum Estimated Cost:	\$127.00

Record Number: 1126

Priority:

Alternative *
Rec:
(Where Available)

Full Rec: Relocate the flush control on the toilet in the stall designated to be accessible in the restroom so that it is on the wide (approach) side of the toilet area (see ADAAG 4.16.5). Flush controls shall be hand-operated or automatic mechanisms.

**Palmer Park
Restrooms**

Finding: The faucet controls on the lavatory in the restroom require tight grasping, pinching, or twisting of the wrist and are not accessible.

Alternative *
Rec:
(Where Available)

Full Rec: Install faucet controls complying with ADAAG 4.19.5 on the lavatory designated to be accessible in the restroom. Lever-operated, push-type, touch-type or electronically controlled mechanisms are acceptable elements (see ADAAG 4.19.5). If self-closing valves are used the faucet shall remain open for at least 10 seconds.



Men's Restroom

Citations: ADAAG 4.19.5

Minimum Quantity:	1
Maximum Quantity	1
Minimum Estimated Cost:	\$392.00
Maximum Estimated Cost:	\$392.00

Record Number: 1127

Priority:

Restrooms

Finding: The height of the rim surface of the lavatory designated to be accessible in the restroom is greater than 34 inches above the finished floor.

Alternative *
Rec:
(Where Available)

Full Rec: Relocate or replace the lavatory designated to be accessible in the restroom to provide a maximum rim surface height of no greater than 34 inches above the finished floor (see ADAAG 4.19.2).



Men's Restroom

Citations: ADAAG 4.19.2

Minimum Quantity:	1
Maximum Quantity	1
Minimum Estimated Cost:	\$1,286.00
Maximum Estimated Cost:	\$1,286.00

Record Number: 1128

Priority:

Palmer Park Restrooms

Finding: The pipes under the lavatory in the restroom do not provide protection against contact.



Men's Restroom

Citations: ADAAG 4.19.4

Minimum Quantity:	1
Maximum Quantity:	1
Minimum Estimated Cost:	\$39.00
Maximum Estimated Cost:	\$39.00

Record Number: 1129

Priority:

Alternative *
Rec:
(Where Available)

Full Rec: Insulate or otherwise configure pipes under the lavatory designated to be accessible in the restroom to protect against contact (see ADAAG 4.19.4). Make certain there are no sharp or abrasive surfaces under the lavatory.

Restrooms

Finding: There is no signage indicating accessibility on the latch side of the entry door of the restroom. There is no Title 24 gender use signage on the entrance door.



Women's Restroom

Citations: CBC 1115B.5; ADAAG 4.1.6; ADAAG 4.1.2(7); ADAAG 4.1.6(3)(e); ADAAG 4.30

Minimum Quantity:	1
Maximum Quantity:	1
Minimum Estimated Cost:	\$58.00
Maximum Estimated Cost:	\$58.00

Record Number: 1130

Priority:

Alternative *
Rec:
(Where Available)

Full Rec: The restroom is designated accessible and should be made accessible for the facility. Post signage centered 60 inches above the ground surface on the latch side of the entrance door identifying the restroom as accessible upon completion of the following items (see CBC 1115B., ADAAG 4.1.2(7) and ADAAG 4.1.6(3)(e). Signage shall include Braille and raised lettering, the gender or unisex use symbol and the ISA symbol. Post Title 24 gender use signage on the door @ 60" o.c. a.f.f.

**Palmer Park
Restrooms**

Finding: The door to the stall designated to be accessible in the restroom does not close automatically or have accessible hardware.

Alternative *
Rec:
(Where Available)

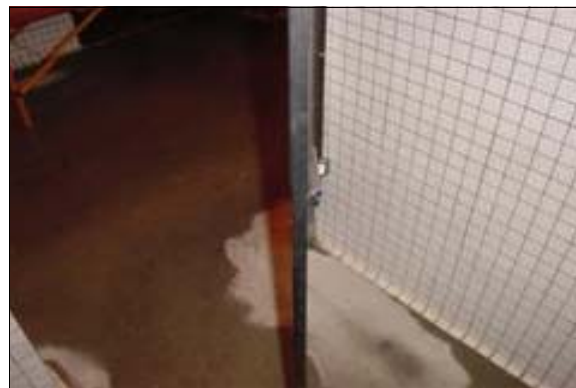
Full Rec: Provide an automatic door closer, spring hinge, pull bar or accessible handle mounted on the inside of the stall door to the stall designated to be accessible in the restroom (see ADAAG A4.17.5). Accessible hardware on the inside and outside of the stall designated to be accessible door shall be equipped with a loop or U-shaped handle mounted immediately below the latch. The latch shall be flip-over style, sliding or other hardware not requiring grasping or twisting. Make certain that the inside and outside door hardware is mounted no more than 48 inches above the finished floor (see CBC 115B.7.1.3 and ADAAG 4.13.9).

Restrooms

Finding: The flush control on the toilet in the stall designated to be accessible in the restroom is not on the wide (approach) side of the toilet.

Alternative *
Rec:
(Where Available)

Full Rec: Relocate the flush control on the toilet in the stall designated to be accessible in the restroom so that it is on the wide (approach) side of the toilet area (see ADAAG 4.16.5). Flush controls shall be hand-operated or automatic mechanisms.



Women's Restroom

Citations: ADAAG A4.17.5

Minimum Quantity:	1
Maximum Quantity	1
Minimum Estimated Cost:	\$269.00
Maximum Estimated Cost:	\$269.00

Record Number: 1131

Priority:



Women's Restroom

Citations: ADAAG 4.16.5; ADAAG 4.27.4

Minimum Quantity:	1
Maximum Quantity	1
Minimum Estimated Cost:	\$127.00
Maximum Estimated Cost:	\$127.00

Record Number: 1132

Priority:

**Palmer Park
Restrooms**

Finding: The faucet controls on the lavatory in the restroom require tight grasping, pinching, or twisting of the wrist and are not accessible.

Alternative *
Rec:
(Where Available)

Full Rec: Install faucet controls complying with ADAAG 4.19.5 on the lavatory designated to be accessible in the restroom. Lever-operated, push-type, touch-type or electronically controlled mechanisms are acceptable elements (see ADAAG 4.19.5). If self-closing valves are used the faucet shall remain open for at least 10 seconds.



Women's Restroom

Citations: ADAAG 4.19.5

Minimum Quantity:	1
Maximum Quantity	1
Minimum Estimated Cost:	\$392.00
Maximum Estimated Cost:	\$392.00

Record Number: 1133

Priority:

Restrooms

Finding: The pipes under the lavatory in the restroom do not provide protection against contact.

Alternative *
Rec:
(Where Available)

Full Rec: Insulate or otherwise configure pipes under the lavatory designated to be accessible in the restroom to protect against contact (see ADAAG 4.19.4). Make certain there are no sharp or abrasive surfaces under the lavatory.



Women's Restroom

Citations: ADAAG 4.19.4

Minimum Quantity:	1
Maximum Quantity	1
Minimum Estimated Cost:	\$39.00
Maximum Estimated Cost:	\$39.00

Record Number: 1134

Priority:

Palmer Park Drinking Fountains

Finding: There are three drinking fountains on primary paths of travel.



Citations: CBC 1117B.1; ADAAG 4.15

Minimum Quantity:	1
Maximum Quantity	1
Minimum Estimated Cost:	\$0.00
Maximum Estimated Cost:	\$0.00

Record Number: 1115

Priority:

Alternative *
Rec:
(Where Available)

Full Rec: Fifty percent of the drinking fountains on primary paths of travel shall be accessible (see CBC 1117B.1 and ADAAG 4.15). Install a "high-low" fountain design to comply with both state and federal requirement. Fountains not located in alcoves need side rails or wing walls on both sides.

Drinking Fountains

Finding: The drinking fountain is not a "high-low" design.



Drinking Fountain at the Construction Zone

Citations: CBC 1117B.1; ADAAG 4.15

Minimum Quantity:	1
Maximum Quantity	1
Minimum Estimated Cost:	\$2,216.00
Maximum Estimated Cost:	\$2,216.00

Record Number: 1118

Priority:

Alternative *
Rec:
(Where Available)

Full Rec: Fifty percent of the drinking fountains on primary paths of travel shall be accessible (see CBC 1117B.1 and ADAAG 4.15). Install a "high-low" fountain design to comply with both state and federal requirements and install a side rail or wing wall next to each side of the fountain.

**Palmer Park
Drinking Fountains**

Finding: The drinking fountain is not a "high-low" design.

Alternative *
Rec:
(Where Available)

Full Rec: Fifty percent of the drinking fountains on primary paths of travel shall be accessible (see CBC 1117B.1 and ADAAG 4.15). Install a "high-low" fountain design to comply with both state and federal requirements and install a side rail or wing wall next to each side of the fountain.



Drinking Fountain Next to the Basketball Courts

Citations: CBC 1117B.1; ADAAG 4.15

Minimum Quantity:	1
Maximum Quantity	1
Minimum Estimated Cost:	\$2,216.00
Maximum Estimated Cost:	\$2,216.00

Record Number: 1116

Priority:

Drinking Fountains

Finding: The drinking fountain is not a "high-low" design.

Alternative *
Rec:
(Where Available)

Full Rec: Fifty percent of the drinking fountains on primary paths of travel shall be accessible (see CBC 1117B.1 and ADAAG 4.15). Install a "high-low" fountain design to comply with both state and federal requirements and install a side rail or wing wall next to each side of the fountain.



Drinking Fountain Outside of the Restrooms

Citations: CBC 1117B.1; ADAAG 4.15

Minimum Quantity:	1
Maximum Quantity	1
Minimum Estimated Cost:	\$2,216.00
Maximum Estimated Cost:	\$2,216.00

Record Number: 1121

Priority:

**Palmer Park
Commons/Lunch Area**

Finding: The knee space at the tables in the outdoor dining area is less than 19 inches deep.



Outdoor Dining Area

Citations: CBC 1122B.3; ADAAG 4.32.2; ADAAG 4.32.5(2)

Minimum Quantity:	1
Maximum Quantity	1
Minimum Estimated Cost:	\$174.00
Maximum Estimated Cost:	\$174.00

Record Number: 1119

Priority:

Alternative *
Rec:
(Where Available)

Full Rec: Modify or replace one of the tables in the outdoor dining area to provide knee clearance of at least 27 inches in height, 30 inches in width and 19 inches in depth (see CBC 1122B.3, ADAAG 4.32.2 and ADAAG Figure 45). The table top height shall not exceed 34 inches above the finished floor.

Playground and Outdoor Sports Areas

Finding: The wading pool is not accessible by a hydraulic chair, ramp, transfer tier, or other means. During the period when the pool does not contain water they may become a tripping hazard.



Wading Pool

Citations:

Minimum Quantity:	1
Maximum Quantity	1
Minimum Estimated Cost:	\$3,620.00
Maximum Estimated Cost:	\$3,620.00

Record Number: 1136

Priority:

Alternative *
Rec:
(Where Available)

Full Rec: Install a hydraulic chair, ramp, transfer tier or other means of access to the pool (see the Final Report, July, 1997, Architectural and Transportation Barriers Compliance Board).

**Palmer Park
Emergency Warning Systems**

Finding: There are no visual warning devices in common areas of the facility.

Alternative Rec: Altering a facility's programs, or addressing higher priority barriers can reduce or eliminate the need for an area of rescue assistance, such as making certain that an individual with a disability participates in programs located near an already accessible exit. Otherwise creating an accessible exit can provide an acceptable alternative to providing an area of rescue assistance.

Full Rec: Install visual warning devices integrated with the facility's alarm system complying with CBC 1114B.2.5, ADAAG 4.1.3(14) and ADAAG 4.28 in all common areas such as hallways, general use rooms, and in accessible restrooms and other accessible rooms.



Citations: CBC 1114B.2.4; ADAAG 4.1.3(14); ADAAG 4.28

Minimum Quantity:	1
Maximum Quantity	1
Minimum Estimated Cost:	\$0.00
Maximum Estimated Cost:	\$288.00

Record Number: 1135

Priority: