

Accessibility Survey

Americans with Disabilities Act And Title 24 of the California Building Code



City of Glendale

Downtown Parking Lot #10

101 E Harvard Street

Inspected January 2008

Prepared By

Disability Access Consultants, Inc.
(800) 743-7067



Facility Name: Downtown Parking Lot #10

Programs, Services, and Activities

Finding: Parking Lot #10 is located at 101 East Harvard Street in Glendale, California. The parking lot was inspected by Disability Access Consultants, Inc., on January 15, 2008.



Alternative *
Rec:
(Where Available)

Full Rec: Any renovation or new construction that occurred after January 26, 1992, is subject to meet full code specifications for the California Building Code and ADAAG requirements. All recommendations in this report are based on ADAAG and CBC Title 24 requirements. Consult with your design professional to determine which elements are affected by these requirements. It is recommended that Disability Access Consultants, Inc. is consulted for inspection of any new construction or renovation at the facility.

Citations: ADAAG 4.1.2; ADAAG 4.1.3; ADAAG 4.1.5; ADAAG 4.1.6
Minimum Quantity: 1
Maximum Quantity: 1
Minimum Estimated Cost: \$0.00
Maximum Estimated Cost: \$0.00
Record Number:: 92
Priority:

Parking

Finding: There are 6 accessible parking spaces out of 69 parking spaces which exceeds by three spaces the minimum needed for compliance. The accessible parking spaces do not measure at least 108 inches wide and do not have compliant access aisles. There is no designated "van-accessible" parking space.



Accessible Parking

Alternative *
Rec:
(Where Available)

Full Rec: Restripe the existing accessible spaces so each measures at least 108 inches wide and 216 inches long. Designate one parking space as "van-accessible". The van-accessible space shall provide a 96 inch wide access aisle on the passenger side the space. Each accessible space shall provide an access aisle measuring at least 60 inches wide. Add the words NO PARKING in 12 inch high white letters at the entrance to each accessible parking access aisle.

Citations: CBC 1129B; ADAAG 4.6; ADAAG A4.6
Minimum Quantity: 1
Maximum Quantity: 6
Minimum Estimated Cost: \$270.00
Maximum Estimated Cost: \$1,620.00
Record Number:: 93
Priority:

Facility Name: Downtown Parking Lot #10

Parking

Finding: There is no accessible route between the accessible parking spaces and the public right of way.



Accessible Parking

Citations: CBC 1129B.4.3; ADAAG 4.7.1

Minimum Quantity:	1
Maximum Quantity	6
Minimum Estimated Cost:	\$1,033.00
Maximum Estimated Cost:	\$6,198.00
Record Number::	94
Priority:	

Alternative *
Rec:
(Where Available)

Full Rec: Install a compliant path of travel from the sidewalk (public right of way) to the accessible parking space.

Parking

Finding: There is no warning signage posted at the parking lot entrance regarding unauthorized use of accessible parking spaces in the parking lot.



Accessible Parking

Citations: CBC 1129B.5; ADAAG 4.6.4 CVC 22511.8(a)(d)

Minimum Quantity:	1
Maximum Quantity	2
Minimum Estimated Cost:	\$150.00
Maximum Estimated Cost:	\$300.00
Record Number::	96
Priority:	

Alternative *
Rec:
(Where Available)

Full Rec: Post a sign in a conspicuous place at the entrance of the parking lot, or immediately adjacent to and visible from each accessible space. The warning sign shall measure at least 17 inches by 22 inches in size and consist of lettering at least 1 inch in height that states the following; "Unauthorized vehicles parked in designated accessible spaces not displaying distinguishing placards or license plates issued for persons with disabilities may be towed away at owner's expense. Towed vehicles may be reclaimed at _____ or by telephoning ____ ." Fill in the blank spaces with appropriate information as a permanent part of the sign and be sure to add the CVC 22511.8(a)(d) to the sign.

Facility Name: Downtown Parking Lot #10

Parking

Finding: There is vertically-mounted signage at the accessible parking spaces, however, the signs use the word "Handicapped".



Accessible Parking

Citations: CBC 1129B.5; ADAAG 4.6.4

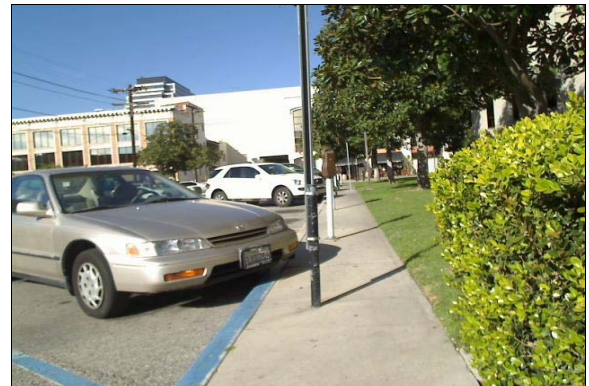
Alternative *
Rec:
(Where Available)

Full Rec: Install a permanently posted reflectorized sign measuring 70 square inches that includes an ISA symbol adjacent to and visible from the accessible parking space (see CBC 1129B.5). The bottom edge of the sign must be mounted 80 inches from the ground surface so that it cannot be obscured by a parked vehicle (see CBC 1129B.5). The "van-accessible" parking space shall provide an additional sign marked "van-accessible" mounted below the sign (see CBC 1129B.5 and ADAAG 4.6.4).

Minimum Quantity:	1
Maximum Quantity	6
Minimum Estimated Cost:	\$150.00
Maximum Estimated Cost:	\$900.00
Record Number::	98
Priority:	

Parking

Finding: There is no device at the head of the accessible parking space and other general parking spaces to prevent vehicles from encroaching into the minimum width of the sidewalk,



Accessible Parking

Citations: CBC 1129B.4.3; ADAAG 4.6.3

Alternative *
Rec:
(Where Available)

Full Rec: Install a wheelstop at the head of the accessible parking spaces and the general parking spaces that are next to sidewalks. Wheelstops shall be used to prevent vehicles from encroaching into accessible aisles or walkways, but shall not present addition encroachment into those areas (see CBC 1129B.4.3).

Minimum Quantity:	1
Maximum Quantity	1
Minimum Estimated Cost:	\$150.00
Maximum Estimated Cost:	\$150.00
Record Number::	100
Priority:	

Curbs, Curb Ramps, and Crosswalks

Finding: The slope of the concrete curb-cut ramp is greater than 8.33%. The cross slope is greater than 2%. The width of the curb-cut ramp is less than 48 inches. The slope at the top and bottom landing is greater than 2%.

Alternative *
Rec:
(Where Available)



Curb Ramp in front of the Adult Recreation Center

Full Rec: Replace the curb ramp with a compliant curb ramp that is at least 48 inches in width, slopes no greater than 8.33%, cross slopes no greater than 2%, and has a level top and bottom landing.

Citations: CBC 1127B.5.3; ADAAG 4.7.2

Minimum Quantity:	1
Maximum Quantity	1
Minimum Estimated Cost:	\$1,033.00
Maximum Estimated Cost:	\$1,033.00

Record Number:: 95

Priority:

Curbs, Curb Ramps, and Crosswalks

Finding: The curb ramp does not provide a grooved border along the top and a detectable warning surface of truncated domes.

Alternative *
Rec:
(Where Available)



Curb Ramp in front of the Adult Recreation Center

Full Rec: Provide a grooved border at least 12 inches wide along the top of the curb ramp and install a compliant detectable warning surface of truncated domes.

Citations: CBC 1127B.5.7 & IR 11B-3 & Adaag 4.29

Minimum Quantity:	1
Maximum Quantity	1
Minimum Estimated Cost:	\$25.00
Maximum Estimated Cost:	\$25.00

Record Number:: 99

Priority:

Facility Name: Downtown Parking Lot #10

Path of Travel

Finding: There is no accessible route from the public right of way to the parking lot or to the accessible parking spaces.



Accessible Route from the Public Right of Way

Alternative *
Rec:
(Where Available)

Full Rec: Provide at least one accessible route from the public right of way to the parking lot and to the accessible parking spaces. Make certain to post signage indicating the direction of the accessible route to the public right of way. Signs shall include the International Symbol of Accessibility.

Citations: CBC 1114B.1.2; CBC 1117B.5.7; CBC 1127B.3; ADAAG 4.1.2(7); ADAAG 4.3.2; ADAAG 4.14.1

Minimum Quantity:	1
Maximum Quantity	1
Minimum Estimated Cost:	\$107.00
Maximum Estimated Cost:	\$0.00

Record Number:: 97

Priority: