

Accessibility Survey

Americans with Disabilities Act And Title 24 of the California Building Code



City of Glendale

College Parking Lot #30

Verdugo S / O Mountain Street

Inspected January 2008

Prepared By

Disability Access Consultants, Inc.
(800) 743-7067



Facility Name: College Parking Lot #30

Programs, Services, and Activities

Finding: Parking Lot #30 is located at the intersection of Verdugo Road and Mountain Street in Glendale, California. The parking lot was inspected by Disability Access Consultants, Inc., on January 16, 2008.



Alternative *
Rec:
(Where Available)

Full Rec: Any renovation or new construction that occurred after January 26, 1992, is subject to meet full code specifications for the California Building Code and ADAAG requirements. All recommendations in this report are based on ADAAG and CBC Title 24 requirements. Consult with your design professional to determine which elements are affected by these requirements. It is recommended that Disability Access Consultants, Inc. is consulted for inspection of any new construction or renovation at the facility.

Citations: ADAAG 4.1.2; ADAAG 4.1.3; ADAAG 4.1.5; ADAAG 4.1.6
Minimum Quantity: 1
Maximum Quantity: 1
Minimum Estimated Cost: \$0.00
Maximum Estimated Cost: \$0.00
Record Number:: 22
Priority:

Parking

Finding: There are 4 accessible parking spaces out of 321 parking spaces which does not meet the minimum number for compliance. The accessible parking spaces measure less than the required 216 inches long by 108 inches wide and they do not have compliant access aisles. There is no designated "van-accessible" parking space.



Alternative *
Rec:
(Where Available)

Full Rec: Eight (8) out of 321 total parking spaces are required to be designated exclusively for accessible parking. Restripe the existing accessible space and create four additional accessible spaces, each measuring at least 108 inches wide and 216 inches long. Designate two parking space as "van-accessible". The van-accessible spaces shall provide an access aisle measuring at least 96 inches wide on the passenger side the space. The two additional parking spaces shall each provide an access aisle measuring at least 60 inches wide, that may be shared. Add the words NO PARKING in 12 inch high white letters at the entrance to each accessible parking access aisle.

Accessible Parking
Citations: CBC 1129B; ADAAG 4.6; ADAAG A4.6
Minimum Quantity: 1
Maximum Quantity: 3
Minimum Estimated Cost: \$270.00
Maximum Estimated Cost: \$810.00
Record Number:: 16
Priority:

Facility Name: College Parking Lot #30

Parking

Finding: There is no accessible route between the accessible parking spaces and the public right of way. Three of the spaces require travel behind vehicles other than the wheelchair users own vehicle.



Accessible Parking

Citations: CBC 1129B.4.3; ADAAG 4.7.1

Alternative *
Rec:
(Where Available)

Full Rec: Install a compliant path of travel from the sidewalk (public right of way) to the accessible parking space. Wheelchair users must not be forced to go behind parked cars other than their own.

Minimum Quantity:	1
Maximum Quantity	4
Minimum Estimated Cost:	\$1,033.00
Maximum Estimated Cost:	\$4,132.00
Record Number::	17
Priority:	

Parking

Finding: The surface of the accessible parking spaces slopes greater than 2%.



Accessible Parking

Citations: CBC 1129B; ADAAG 4.6.3

Alternative *
Rec:
(Where Available)

Full Rec: Pave the parking lot at the accessible spaces to provide a level surface. Parking surfaces and access aisles shall be located in areas not exceeding 2% slope in all directions (see CBC 1129B and ADAAG 4.6.3).

Minimum Quantity:	1
Maximum Quantity	4
Minimum Estimated Cost:	\$900.00
Maximum Estimated Cost:	\$3,600.00
Record Number::	18
Priority:	

Facility Name: College Parking Lot #30

Parking

Finding: At three of the spaces, the signage designating the accessible parking space is less than 80 inches above the level of the parking space and cannot be viewed when a vehicle is parked in the space.



Accessible Parking

Citations: CBC 1129B.5; ADAAG 4.6.4

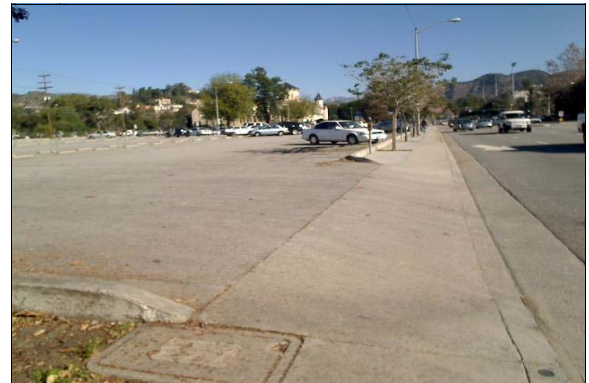
Minimum Quantity:	1
Maximum Quantity	3
Minimum Estimated Cost:	\$150.00
Maximum Estimated Cost:	\$450.00
Record Number::	19
Priority:	

Alternative *
Rec:
(Where Available)

Full Rec: Modify the height or replace the post-mounted signage designating the accessible parking space to provide at least 80 inches from the parking spaces finished grade to the bottom edge of the sign. The sign shall be located so that it cannot be obscured by a vehicle parked in the space (see CBC 1129B.5).

Parking

Finding: There is no warning signage posted at the entrance from North Verdugo Road regarding unauthorized use of accessible parking spaces in the parking lot.



Accessible Parking

Citations: CBC 1129B.5; ADAAG 4.6.4 CVC 22511.8(a)(d)

Minimum Quantity:	1
Maximum Quantity	2
Minimum Estimated Cost:	\$150.00
Maximum Estimated Cost:	\$300.00
Record Number::	20
Priority:	

Alternative *
Rec:
(Where Available)

Full Rec: Post a sign in a conspicuous place at the entrance of the parking lot, or immediately adjacent to and visible from each accessible space. The warning sign shall measure at least 17 inches by 22 inches in size and consist of lettering at least 1 inch in height that states the following; "Unauthorized vehicles parked in designated accessible spaces not displaying distinguishing placards or license plates issued for persons with disabilities may be towed away at owner's expense. Towed vehicles may be reclaimed at _____ or by telephoning ____ ." Fill in the blank spaces with appropriate information as a permanent part of the sign and be sure to add the CVC 22511.8(a)(d) to the sign.

Parking

Finding: There is vertically-mounted signage at the designated accessible parking spaces, however, the signs use the word "Handicapped".



Accessible Parking

Citations: CBC 1129B.5; ADAAG 4.6.4

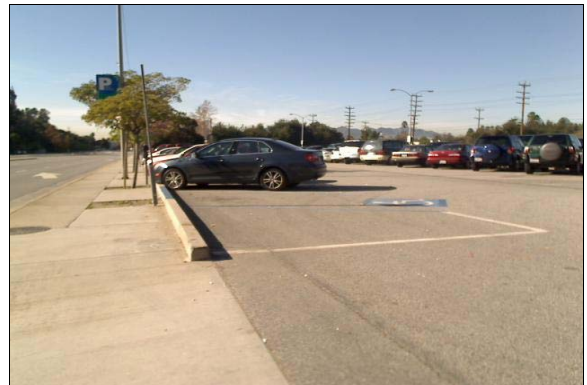
Alternative *
Rec:
(Where Available)

Full Rec: Install a permanently posted reflectorized sign measuring 70 square inches that includes an ISA symbol adjacent to and visible from the accessible parking space (see CBC 1129B.5). The bottom edge of the sign must be mounted 80 inches from the ground surface so that it cannot be obscured by a parked vehicle (see CBC 1129B.5). The "van-accessible" parking space shall provide an additional sign marked "van-accessible" mounted below the sign (see CBC 1129B.5 and ADAAG 4.6.4). Do not use signage with the word "Handicapped".

Minimum Quantity:	1
Maximum Quantity	4
Minimum Estimated Cost:	\$150.00
Maximum Estimated Cost:	\$600.00
Record Number::	23
Priority:	

Path of Travel

Finding: There is no accessible route from the public right of way to the parking lot or to the accessible parking spaces.



Accessible Route from the Public Right of Way

Alternative Post directional signage.
Rec:
(Where Available)

Full Rec: Provide at least one accessible route from the public right of way to the parking lot and to the accessible parking spaces. Make certain to post signage indicating the direction of the accessible route to the public right of way. Signs shall include the International Symbol of Accessibility.

Citations: CBC 1114B.1.2; CBC 1117B.5.7; CBC 1127B.3; ADAAG 4.1.2(7); ADAAG 4.3.2; ADAAG 4.14.1	
Minimum Quantity:	1
Maximum Quantity	1
Minimum Estimated Cost:	\$107.00
Maximum Estimated Cost:	\$0.00
Record Number::	21
Priority:	